



Midpeninsula Regional  
Open Space District

R-13-72  
Meeting 13-23  
September 25, 2013

## AGENDA ITEM 7

Authorization to Amend a Contract with Geocon Consultants, Inc., for Additional Geotechnical Services for the Mount Umunhum Staging Area at Bald Mountain as part of the Mount Umunhum Public Access Project

### GENERAL MANAGER'S RECOMMENDATION

Authorize the General Manager to amend an existing contract with Geocon Consultants, Inc., by \$20,000, for a total not-to-exceed amount of \$44,000, to provide additional geotechnical engineering services for the Mount Umunhum Staging Area at Bald Mountain.

### SUMMARY

The first phase of the Mount Umunhum Public Access Project includes construction of a parking lot and staging area at the Bald Mountain trailhead. Additional geotechnical investigations are required from Geocon Consultants, Inc., (Geocon) to inform the design of the parking lot's stormwater drainage system. Specifically, the contract amendment includes additional soil test pits to confirm infiltration rates within the proposed drainage basin, geotechnical analysis of a drainage outfall slope, and construction oversight. The additional services require a \$20,000 contract amendment, bringing the total contract to a total not-to-exceed amount of \$44,000. Funds for this contract amendment are available from budget savings of other Planning projects.

### DISCUSSION

In February 2012, the District entered into a \$24,000 contract with Geocon (which was within the General Manager's budget authority) to conduct a topographical survey and geotechnical investigation to inform the design of the Bald Mountain Staging Area Project (Project; see Attachment A). The consultants first developed a conceptual site plan to sketch the potential layout of the stormwater drainage system and location of drainage basins to determine where to conduct soil infiltration tests. The contract included excavation of several soil test pits to determine water infiltration rates for the basins. The testing results led to a redesign of the preliminary stormwater drainage plan for the parking area, including moving the drainage basins to a different location. This iterative approach is typical of a site design process. At this time, additional test pits and percolation tests to further characterize soil drainage are recommended for the new basin location. Although the stormwater drainage calculations for the parking lot are conservative and assume a relatively slow infiltration rate (as is required by Santa Clara County's stormwater treatment regulations), additional excavations to better inform the drainage design would minimize the potential for unanticipated changes during grading and construction.

In light of recent stormwater drainage issues at the El Corte de Madera Creek staging area, this conservative approach is desirable.

The new drainage design also includes use of an existing roadside drainage ditch and ditch relief culvert to carry stormwater overflows. The ditch and culvert are located outside of the original survey area. The contract amendment would include a survey of the culvert location and a reconnaissance-level investigation of slope stability at the culvert outfall. Staff anticipates the culvert will be replaced and additional slope protection installed at the outfall. The investigation may also confirm staff's initial assessment that additional flow within and downstream of the culvert will not cause erosion or otherwise impact downstream resources. A natural topographical swale at the culvert location eventually joins the main stem of Guadalupe Creek, which flows entirely through District land until it reaches the Guadalupe Reservoir approximately two miles downstream.

Lastly, the contract amendment also provides for adequate field time for Geocon engineers to provide oversight and inspection services during project construction.

### **FISCAL IMPACT**

The Planning FY2013-14 Budget currently includes sufficient funds to cover the original \$24,000 contract with Geocon. Savings from the Bay Trail Implementation Project would cover the additional \$20,000 that is being requested as part of the recommended contract amendment.

### **BOARD COMMITTEE REVIEW**

No committee review is required.

### **PUBLIC NOTICE**

Public notice of this Agenda Item was provided per the Brown Act. No additional notice is required.

### **CEQA COMPLIANCE**

Staff completed an Environmental Impact Report for the Project, which the Board adopted on September 19, 2012 (R-12-91). A Notice of Determination was filed with the San Mateo County Clerk Recorder on September 24, 2012.

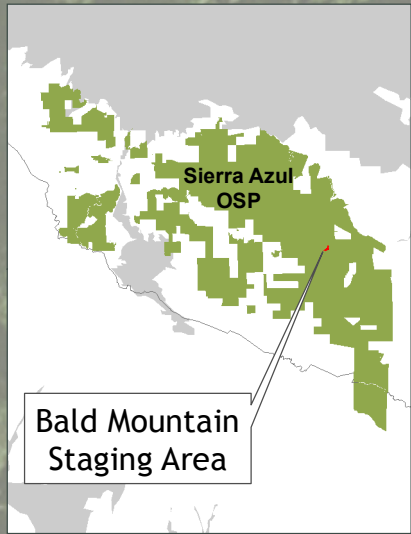
### **NEXT STEPS**

Upon approval by the Board, the General Manager would execute a \$20,000 amendment to the contract with Geocon for additional geotechnical services for the Mount Umunhum Staging Area Project at Bald Mountain.

Responsible Department Manager:  
Meredith Manning, Co-Acting Planning Manager

Prepared by:  
Lisa Bankosh, Planner III

Contact person: Same as above



SIERRA AZUL  
OPEN SPACE  
PRESERVE

Existing Culvert

Roadside  
Parking

TO BALD MOUNTAIN →

MT UMUNHUM ROAD

Permit  
Parking

←  
TO  
MOUNT  
UMUNHUM  
SUMMIT

John Northmore Roberts & Associates  
LANDSCAPE ARCHITECTS / LAND PLANNERS

Source: Esri, DigitalGlobe, GeoEye, i-cubed, USDA, USGS, AEX, Getmapping, Aerogrid, IGN, IGP, swisstopo, and the GIS User Community

## Attachment A - Bald Mountain Staging Area: Schematic Parking Lot Design

Midpeninsula Regional  
Open Space District

September 2013

0 0.03 Miles



Path: G:\Projects\Sierra\_Azul\Bald\_Mountain\BaldMtn\_CAD.mxd