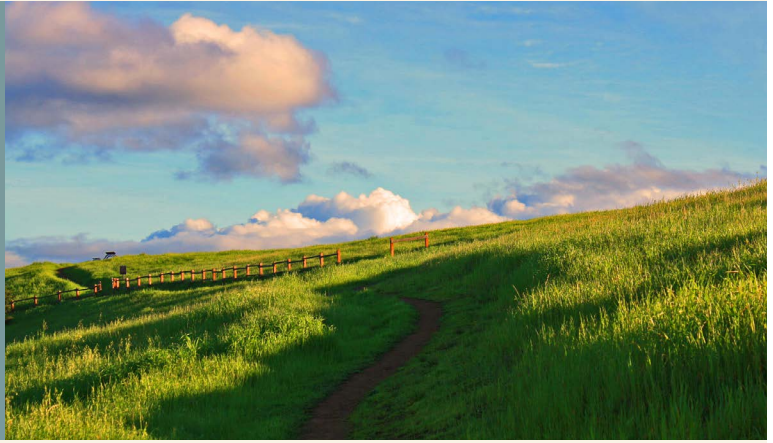


Portfolio 11

Rancho San Antonio Interpretive Improvements, Refurbishing and Transit Solutions



Rancho San Antonio Open Space Preserve (Brian Bucher)

DESCRIPTION

- Add welcome center.
- Refurbish and add interpretive exhibits to Deer Hollow Farm.
- Support of transit improvement options such as bike trails, bike share station, bus service or additional parking.

Portfolio Allocation: \$10,811,000

Portfolio Expenditures Through 6/30/2023: \$331,612

NOTABLE ACCOMPLISHMENTS

MAA11-001 New Trails to Connect Quarry Trail to Black Mountain Trail

Prior Years

Accepted two trail easements, two rights of first offer and rights of first refusal and a conditional grant deed conveyance, for properties adjacent to Monte Bello and Rancho San Antonio preserves.

MAA11-002 Rancho San Antonio, Deer Hollow Farm: White Barn Rehabilitation

Prior Years

Completed construction of stabilization and weatherproofing improvements of the White Barn as an important agricultural support building that provides for active environmental programming and interpretation on site, including hosting elementary school camps, offering weekend events and providing drop-in visitor exploration.

Completed project design and started the permitting process with County of Santa Clara; and issued Request for Bids for construction.

Selected consultant for the design and assessment of the Rancho San Antonio White Barn to improve building access, structural stability and public safety.

With MAA and other funding, completed historic and structural assessments for the Deer Hollow Farm White Barn; obtained Legislative, Funding and Public Affairs Committee confirmation of partnership agreements to fund project.

MAA11-003 Rancho San Antonio Multimodal Access—Implementation (MAA Eligible)

Fiscal Year 2023

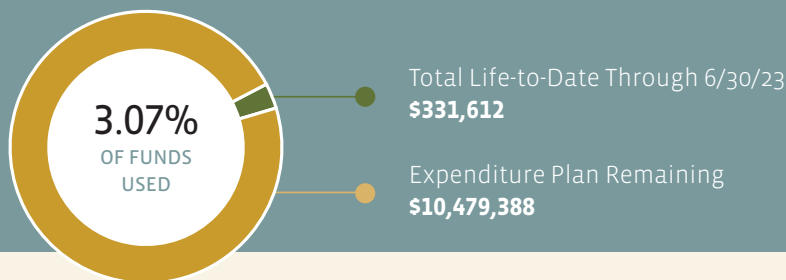
Published a parking status webpage, partnered with the City of Cupertino to enter into a cooperative agreement for future bicycle improvements on Cristo Rey Drive and initiated a carpool restricted lot pilot program.

Prior Years

Installed new bike racks and a bike repair station. Negotiated commitments with the City of Cupertino for road improvements with cost-sharing to be determined.

Portfolio 11: Rancho San Antonio—Interpretive Improvements, Refurbishing and Transit Solutions

Project	Expenditure Plan	Total Through Prior Period 6/30/22	Current Period 7/1/22 Through 6/30/23	Total Life-to-Date Through 6/30/23	Expenditure Plan Remaining	Percent Expended
Total Portfolio Allocation	\$10,811,000					
11-001—New Trails to Connect Quarry Trail to Black Mountain Trail		\$728	\$0	\$728		
11-002—Rancho San Antonio, Deer Hollow Farm: White Barn Rehabilitation		\$512,505	\$0	\$512,505		
11-003—Ranch San Antonio (RSA) Multimodal Access—Implementation		\$0	\$49,260	\$49,260		
Subtotal	\$10,811,000	\$513,233	\$49,260	\$562,493	\$10,248,507	5.20%
11-002 Rancho San Antonio, Deer Hollow Farm: White Barn Rehabilitation Grant Income		(\$230,881)	\$0	(\$230,881)		
Grand Total	\$10,811,000	\$282,352	\$49,260	\$331,612	\$10,479,388	3.07%



Ordered a dynamic sign/traffic sensors system that will provide real-time parking availability information at the preserve entrance and on Midpen’s website to assist with parking management.

In Support of MAA11

Prior Years

Completed multimodal access study and final report with transportation demand management strategies (TDM). Added signage on Foothill Expressway and St. Joseph’s Avenue in Los Altos to assist with wayfinding of the preserve.

Restored the White Barn milk room at Deer Hollow Farm, which facilitates ongoing environmental interpretation and animal husbandry at the popular farm site.

Conducted a one-week tabling campaign for mountain lion awareness at Rancho San Antonio Preserve. Conducted historic and structural assessments of the White Barn in cooperation with the City of Mountain View and Friends of Deer Hollow Farm.

PROJECT CHALLENGES

Implementation of some of the board-approved Tier 1 transportation demand management strategies are dependent on partnership coordination, agreements, resources and co-implementation with other agencies.

POTENTIAL NEXT STEPS

Continue implementation of Tier 1 TDM strategies. Evaluate carpool pilot program effectiveness and consider long-term implementation, if feasible. Develop a plan for a subsidized ride hail program and shuttle program and present implementation plan, cost and resource implications, grant sources and performance metrics to the board along with final recommendations for the Preserve.

Conduct public outreach to gain input on a planned ADA-accessible path to Deer Hollow Farm. Hold a Planning and Natural Resources Committee meeting to review the proposed trail improvements and initiate CEQA review.

Prepare construction documents to replace the public vault toilet restroom at Deer Hollow Farm. Complete CEQA review.