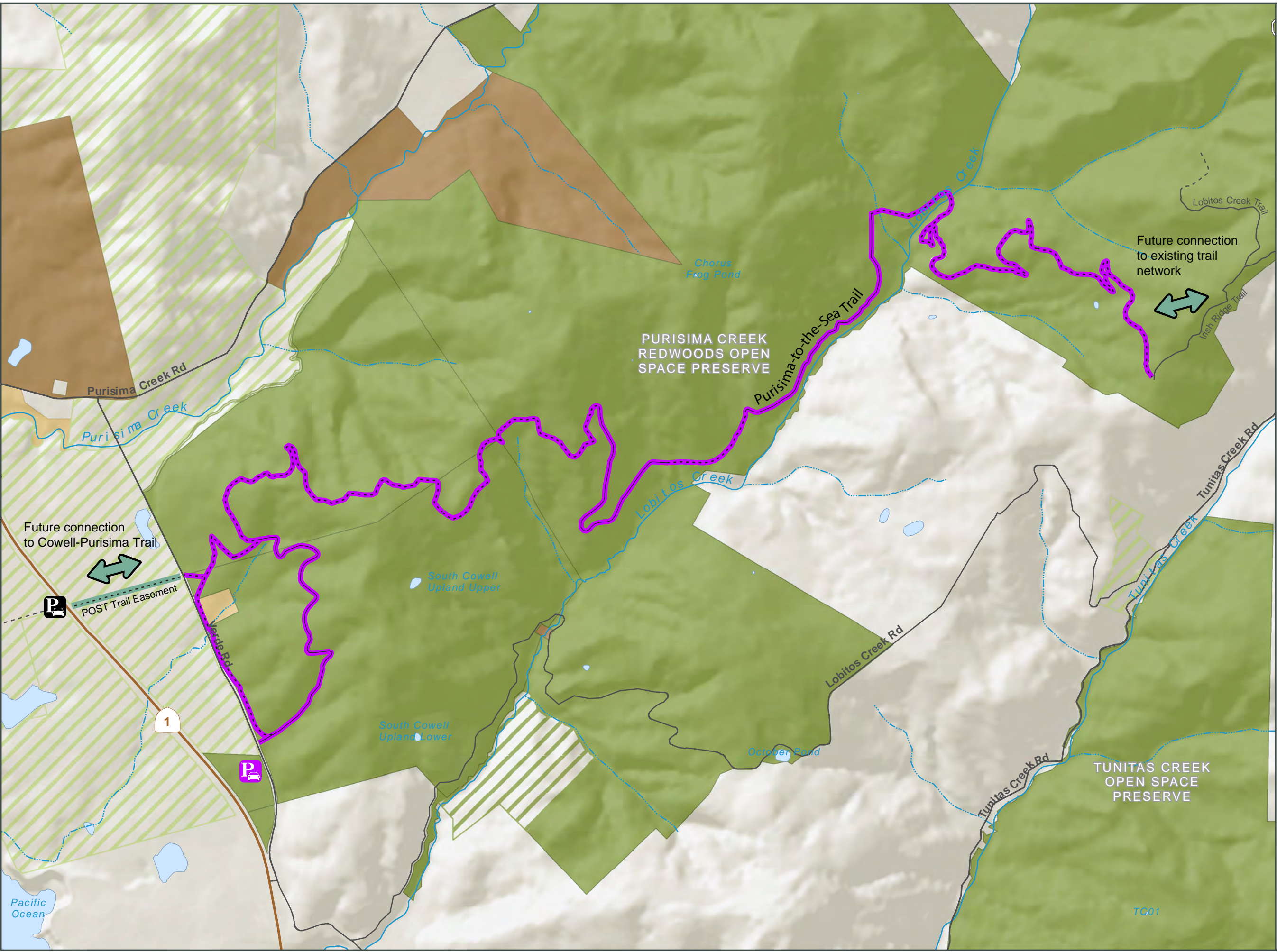
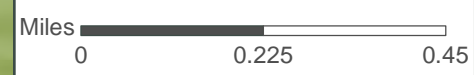









Path: G:\Projects\Purisima\_Creek\_Redwoods\Purisima\_to\_the\_Sea\Crew\_Scouting\PSO\_BoardTrailsMap\_20211201.mxd  
Created By: bappler



### Purisima-to-the-Sea Trail Alignment

-  Proposed Purisima-to-the-Sea Trail Alignment
-  POST Trail Easement
-  Improve Existing Road/Trail
-  New Trail Construction
-  Proposed Parking Area
-  Coastal Trail Parking Area
-  Connection to Existing Trail

While the District strives to use the best available digital data, these data do not represent a legal survey and are merely a graphic illustration of geographic features.