

Welcome to the Midpeninsula Regional Open Space District



Long Ridge Open Space Preserve

Matthew Findling

Created in 1972, Midpen is an independent special district that helps plants, animals and people thrive throughout the greater Santa Cruz Mountains region by preserving a connected greenbelt of more than 65,000 acres of public open space. These diverse and scenic landscapes, from bay wetlands to redwood forests and coastal grasslands, host an incredible diversity of life, making our region one of the world's biodiversity hotspots.

Midpen actively manages the land and waterways to restore their health and function, helping our local ecosystem become more resilient in a time of climate change. By caring for the land, the land in turn takes care of us, providing tangible and intangible benefits like clean air and water, flood protection and the opportunity for restorative experiences in nature.

Many areas of Midpen preserves are open daily to the public, free of charge, providing nearly 250 miles of trails for low-impact recreation. Our programming connects people to nature through enriched experiences including environmental interpretation, docent-led activities and volunteer opportunities. Learn more at openspace.org.

History

The late 1960s was a time of rapid growth in the Bay Area. Through a determined and heartfelt grassroots effort by local conservationists, the Midpeninsula Regional Open Space District was created in 1972, when the Measure R "Room to Breathe" initiative was passed by Santa Clara County voters. Local residents voted to expand Midpen's boundary into southern San Mateo County in 1976, and in 1992 to a small portion of Santa Cruz County. In the late 1990s, development pressure increased on the San Mateo County Coast, threatening sensitive habitat and the area's rural heritage. This led to the 2004 Coastside Protection Area, an extension of District boundaries to the Pacific Ocean in San Mateo County, and the addition of preserving rural character and encouraging viable agricultural use of land resources to our mission.



Jack Gescheidt

Governance

Midpen is governed by a seven-member publicly elected board of directors. Board members serve a four-year term and represent a geographic ward of approximately equal populations. The board holds its regular public meetings on the second and fourth Wednesdays of each month at 7 p.m., at the Midpen administrative office: 330 Distel Circle, Los Altos, CA.

Staffing

The staff currently includes over 180 employees in 11 departments: budget and analysis, engineering and construction, finance, human resources, information systems and technology, land and facilities services, natural resources, planning, public affairs, real property and visitor services.

Funding

Midpen's primary source of revenue is property taxes, which are levied on all taxable property within the District's boundaries covering portions of Santa Clara and San Mateo counties. Additionally, in June 2014, voters approved Measure AA, a \$300 million general obligation bond to protect natural open space lands; open preserves or areas of preserves that are currently closed; construct public access improvements such as new trails and staging areas; and restore and enhance open space land, which includes forests, streams, watersheds and coastal ranch areas.



Karl Gohl

Volunteer Opportunities

Each year, nearly 1,000 Midpen and partner volunteers contribute more than 20,000 hours preserving and protecting open space lands by educating and inspiring visitors, constructing and maintaining trails and removing invasive, nonnative vegetation.



Midpeninsula Regional Open Space District

330 Distel Circle

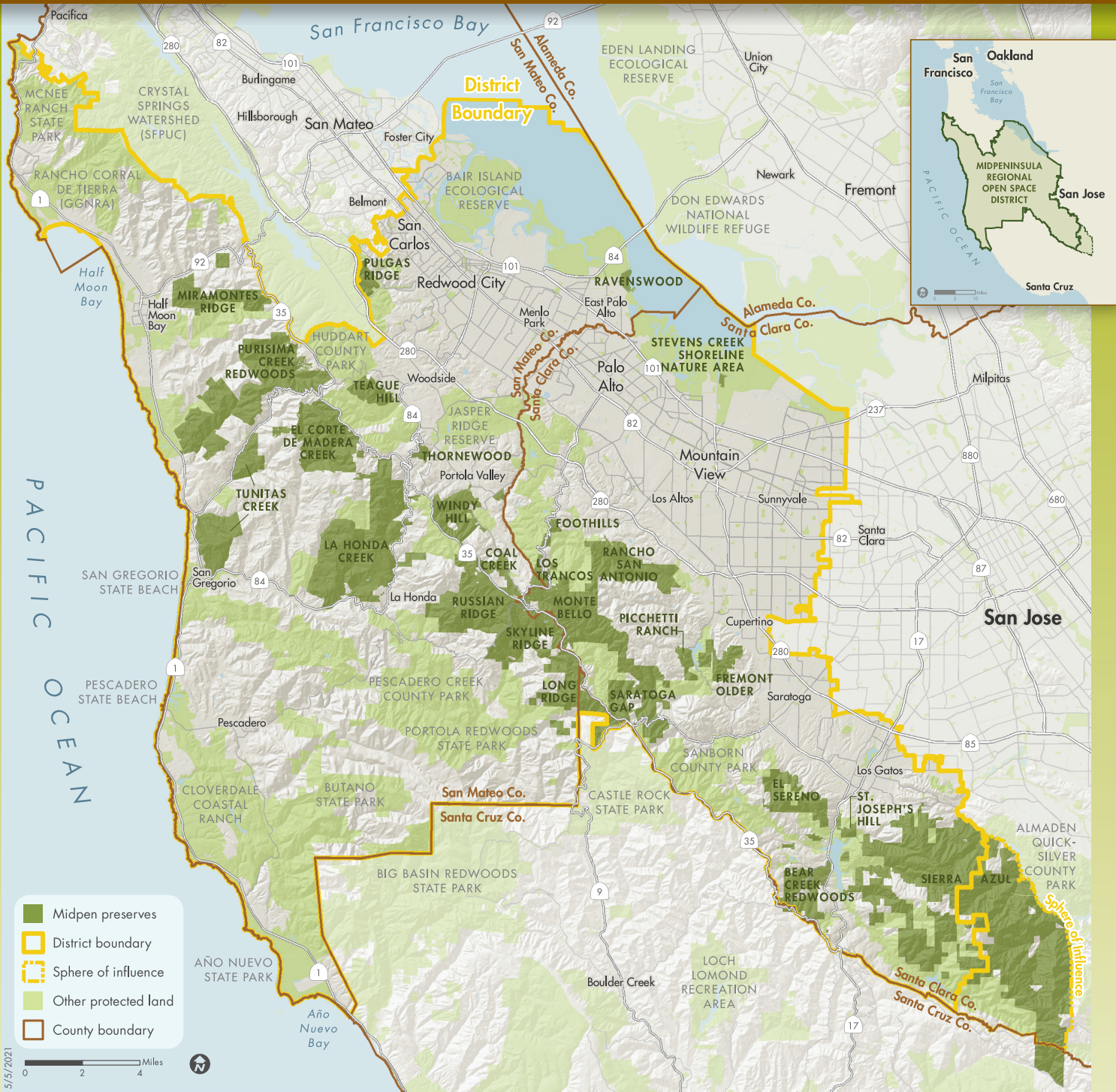
Los Altos, California 94022-1404

650-691-1200 • info@openspace.org

openspace.org



Midpeninsula Regional Open Space District



5/15/2021
0 2 4 Miles



openspace.org

Legend

- Hiking
- Equestrian
- Cycling
- Dog walking
- Easy-access trails
- All trails
- Designated trails only

Preserves	Acres					
Bear Creek Redwoods	1,437	●	●	●	●	●
Coal Creek	508	●	●	●	●	●
El Corte de Madera Creek	2,908	●	●	●	●	●
El Sereno	1,614	●	●	●	●	●
Foothills	212	●	●	●	●	●
Fremont Older	739	●	●	●	●	●
La Honda Creek	6,334	●	●	●	●	●
Long Ridge	2,226	●	●	●	●	●
Los Trancos	274	●	●	●	●	●
Miramontes Ridge	1,716	●	●	●	●	●
Monte Bello	3,535	●	●	●	●	●
Picchetti Ranch	308	●	●	●	●	●
Pulgas Ridge	366	●	●	●	●	●

Preserves	Acres					
Purisima Creek Redwoods	5,412	●	●	●	●	●
Rancho San Antonio	3,997	●	●	●	●	●
Ravenswood	374	●	●	●	●	●
Russian Ridge	3,491	●	●	●	●	●
Saratoga Gap	1,613	●	●	●	●	●
Sierra Azul	19,301	●	●	●	●	●
Skyline Ridge	2,144	●	●	●	●	●
St. Joseph's Hill	273	●	●	●	●	●
Stevens Creek Shoreline Nature Study Area	55	●	●	●	●	●
Teague Hill	626	●	●	●	●	●
Thornewood	167	●	●	●	●	●
Tunitas Creek	2,200	●	●	●	●	●
Windy Hill	1,414	●	●	●	●	●