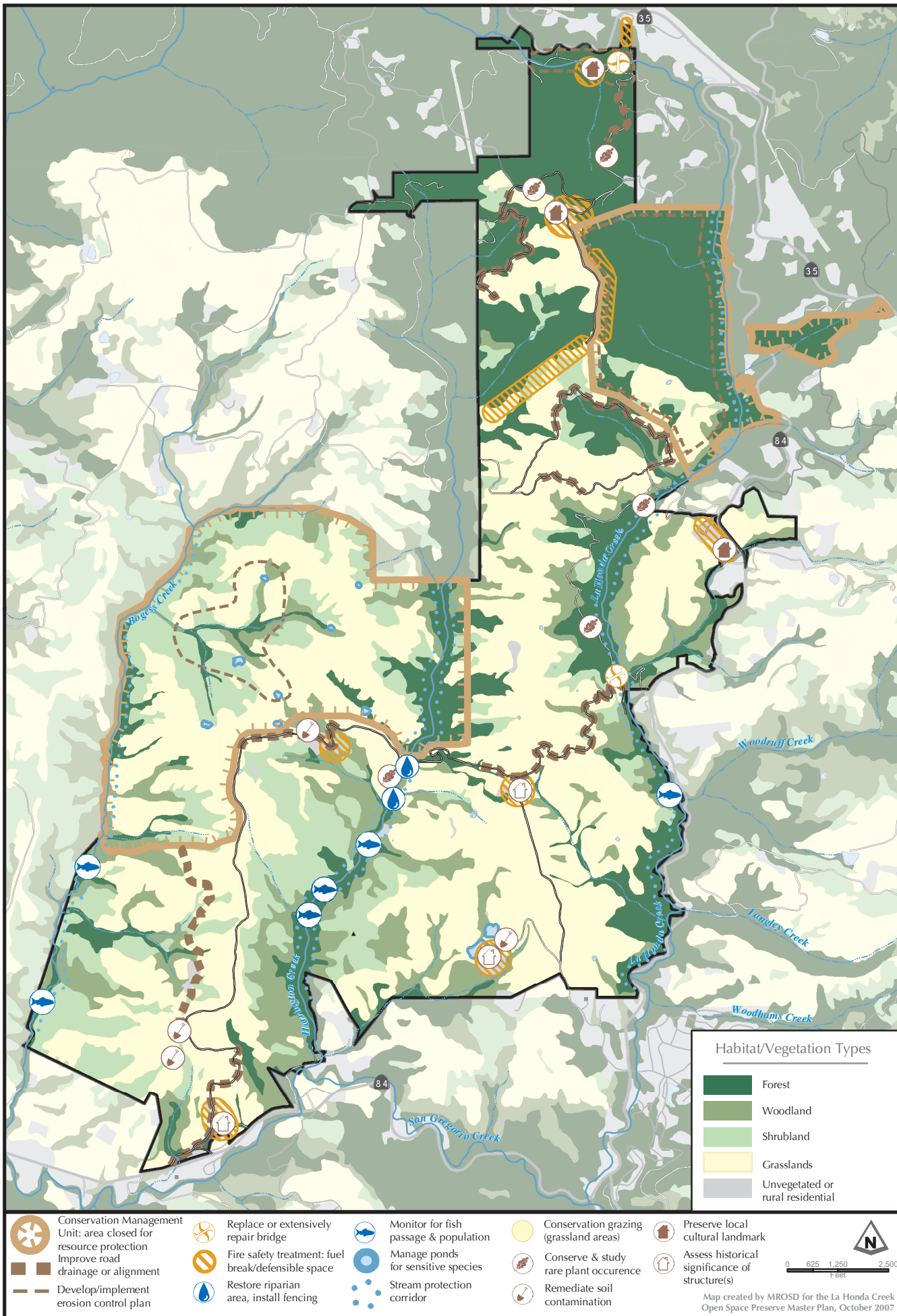
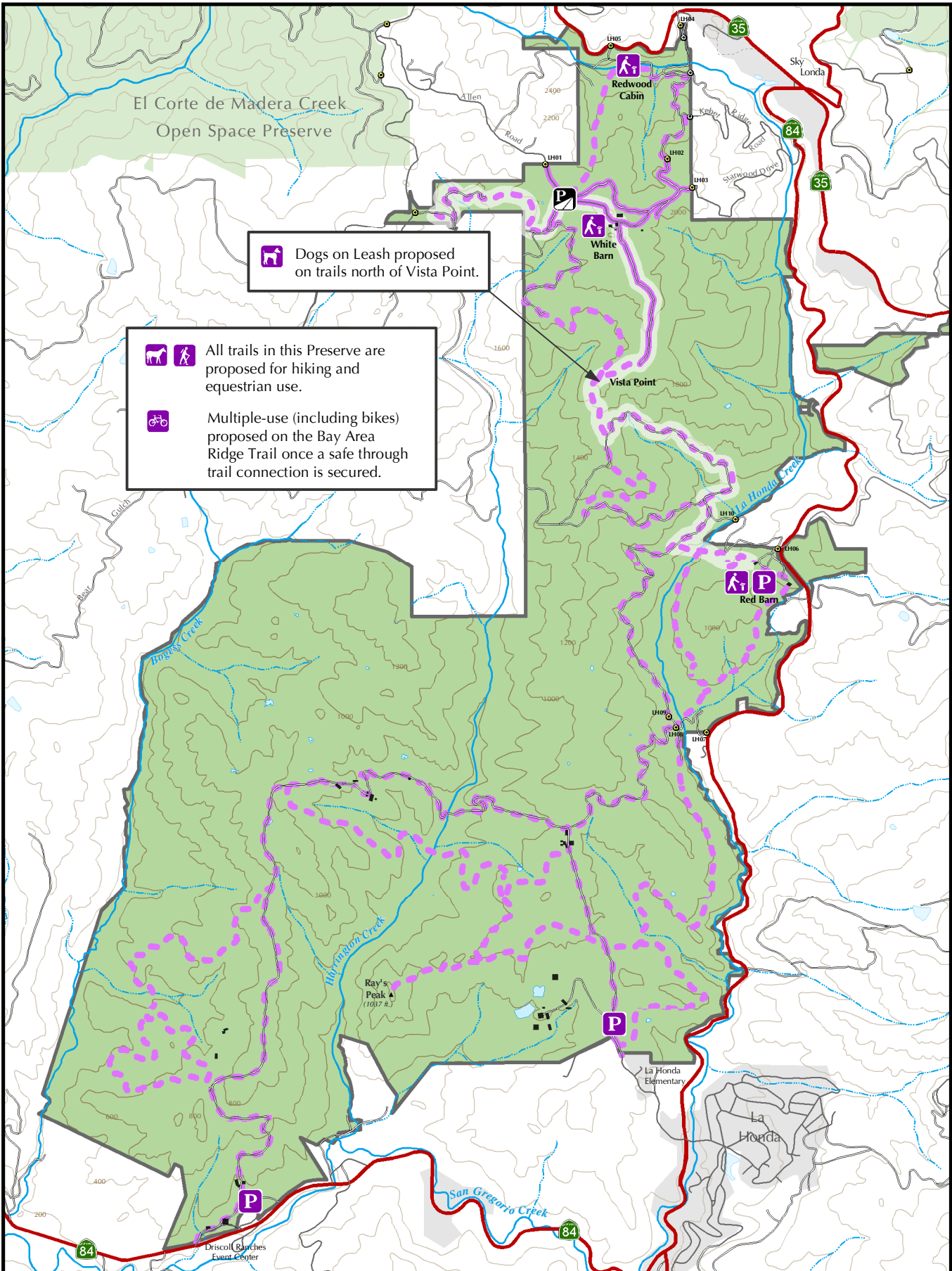



RESOURCE MANAGEMENT





NOTE: These maps are for planning purposes only. They are not intended as guides to public lands, trails or facilities. See Preserve maps and brochures for existing access information. Natural resource data is general in scope and scale; these maps are intended to help guide the development of the La Honda Creek Open Space Preserve Master Plan.











PUBLIC ACCESS



 Dogs on Leash proposed on trails north of Vista Point.

 All trails in this Preserve are proposed for hiking and equestrian use.

 Multiple-use (including bikes) proposed on the Bay Area Ridge Trail once a safe through trail connection is secured.

	Existing Public Trails		Potential Bay Area Ridge Trail Corridor		Existing Parking Area		Unpaved Ranch / Patrol Road
	Proposed Trail Additions		Proposed Interpretive Site		Proposed Parking Area		Existing Paved Road
							
							

Map created by MROSD for the La Honda Creek Open Space Preserve Master Plan, October 2007

NOTE: These maps are for planning purposes only. They are not intended as guides to public lands, trails or facilities. See Preserve maps and brochures for existing access information. Proposed public access facilities are general in scope and scale; these maps are intended to help guide the development of the La Honda Creek Open Space Preserve Master Plan.