

# La Honda Creek Open Space Preserve

MASTER PLAN

WINTER 2007

## OVERVIEW

Midpeninsula Regional Open Space District is developing a resource protection and visitor use plan for its 5,759-acre La Honda Creek Open Space Preserve, which includes the newly purchased Driscoll Ranch. The Preserve is known for its tall redwoods, expansive grasslands, and spectacular coastal view, extending nearly five miles downhill along La Honda Road, from Skyline Boulevard/Highway 35 almost halfway to the coast.

This newsletter is designed to provide an update on the La Honda Creek Open Space Preserve Master Plan project. Through the master planning process, the District aims to provide the public with greater opportunities for low-intensity recreational access, interpretation, and education, while actively grazing the land and protecting the natural, cultural, and historic resources of the Preserve.

## PLEASE JOIN US FOR AN OPEN HOUSE

**TUESDAY, DECEMBER 4, 2007, 4:00 P.M. TO 7:00 P.M.**  
**THE MOUNTAIN TERRACE (SEE REVERSE FOR DIRECTIONS)**

Midpeninsula Regional Open Space District is pleased to announce the release of the La Honda Creek Open Space Preserve Draft Master Plan! We invite members of the public to come learn about and study the Draft Plan recommendations in preparation for an upcoming Public Hearing. The recommendations are true to the District's mission and incorporate

many of the comments and ideas the District heard from neighbors, agencies, Preserve users, and local organizations. Please join us at this informal event where members of the Project Team will be present to answer your questions. This is an opportunity to preview the Draft Plan and provide early input.

## NEXT STEPS

DECEMBER 4, 2007

DRAFT PLAN OPEN HOUSE

DECEMBER 21, 2007

RELEASE OF THE FULL DRAFT PLAN DOCUMENT

JANUARY 2008

1ST PUBLIC HEARING ON DRAFT PLAN

MARCH 2008

FINAL PLAN & ENVIRONMENTAL REVIEW

SPRING 2008

2ND PUBLIC HEARING & FINAL PLAN ADOPTION

## CONTACT INFORMATION

If you have any questions or comments, please email [lahondamasterplan@openspace.org](mailto:lahondamasterplan@openspace.org), visit the Web site [www.openspace.org](http://www.openspace.org), or call Ana Ruiz, Project Planner, at (650) 691-1200. Information, including handouts, public feedback from previous workshops, and maps, can be found on the project Web site.

## Draft Master Plan Recommendations

The list below and the enclosed maps represent a few key recommendations of the Draft Plan.

### PONDS, STREAMS, WATER QUALITY

- Monitor, modify fish barriers
- Repair road related erosion
- Restore denuded riparian areas
- Exclude cattle with added fencing
- Prepare Pond Management Plan
- Conduct San Francisco garter snake surveys; reintroduce if absent

### CULTURAL RESOURCES

- Feature Red Barn, White Barn, & Redwood Cabin, prepare maintenance plan for each
- Develop interpretive materials
- Preserve rural character and historic structures
- Update District inventory as new information becomes known

### VEGETATION MANAGEMENT

- Continue/expand conservation grazing
- Implement rangeland monitoring
- Inventory & protect landmark trees
- Develop forest mgmt practices
- Focus weed control along roads & former building sites
- Monitor & protect rare plants
- Monitor Sudden Oak Death, follow best management practices

### PARKING AND STAGING AREAS

- Improve layout of Allen Road permit parking lot
- New parking areas near the Red Barn Area and Driscoll Events Center with ample room for equestrian parking
- New parking area off Sears Ranch Road

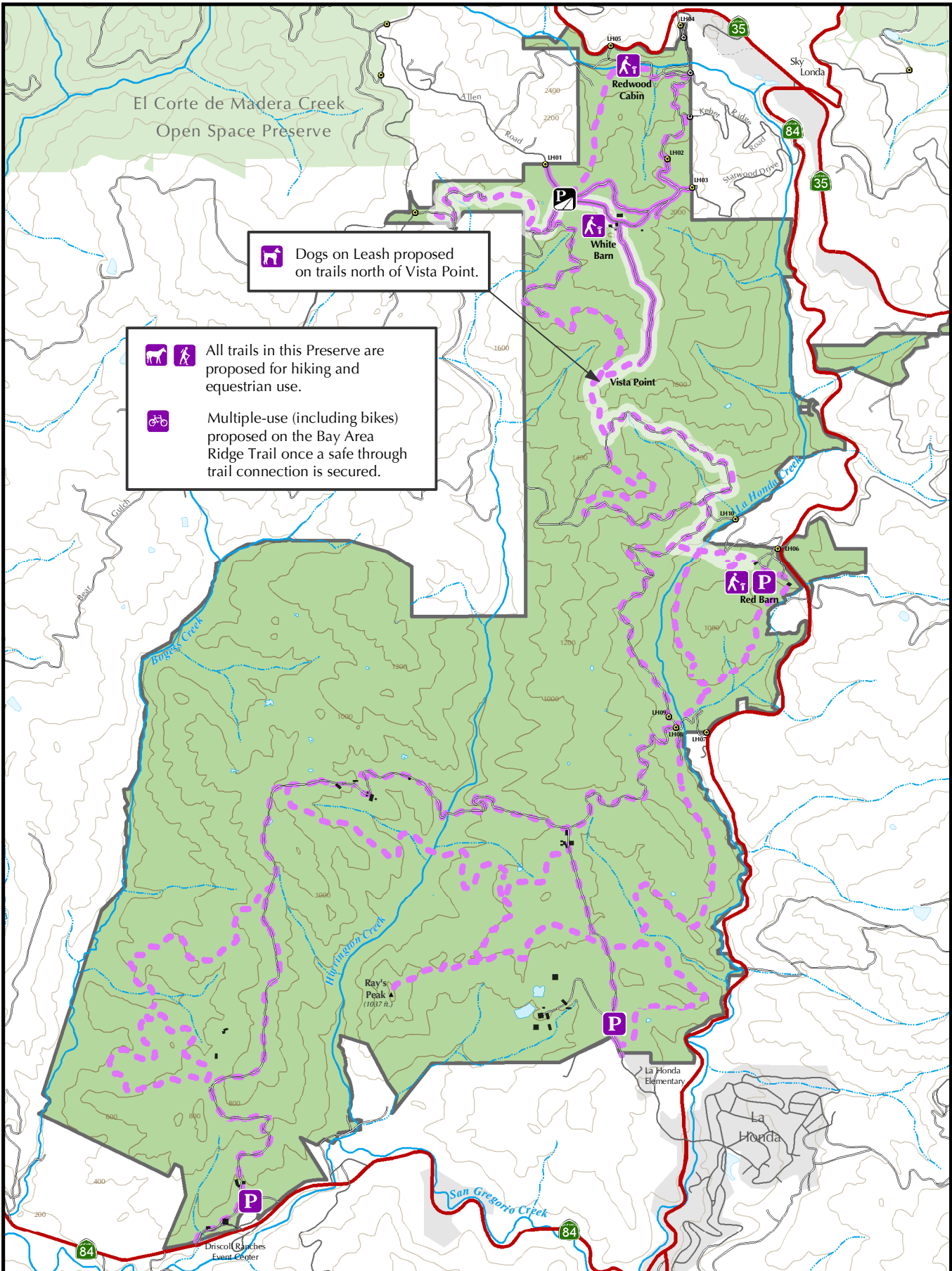
### INTERIOR AND REGIONAL TRAILS

- Open 30 miles of new trails and existing ranch roads
- Numerous loops off Allen Road, Red Barn area, & Sears Ranch Road
- Easy access trail off Allen Road
- Designate Ridge Trail corridor
- Trail connection between upper La Honda Creek OSP & Red Barn area
- Develop Road Maintenance Plan


### PUBLIC USE


- As staging areas & new trails are constructed & existing trails improved, open new areas of the Preserve to hiking & equestrian use
- Open Ridge Trail alignment to multiple-use (includes bikes) once a safe through trail connection is secured
- Open trails near the Allen Road entrance to dogs on leash












# PUBLIC ACCESS



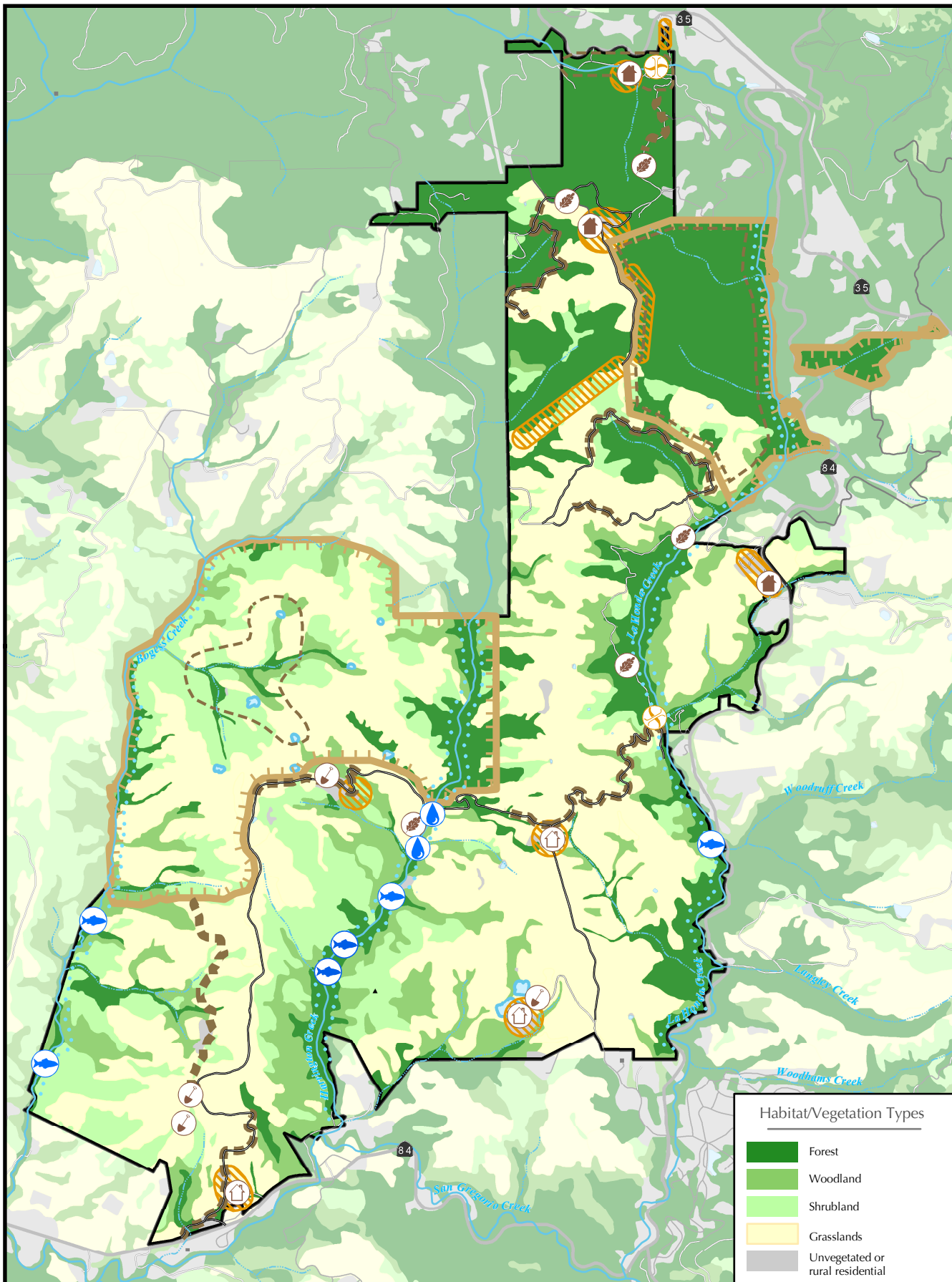
 Dogs on Leash proposed on trails north of Vista Point.

 All trails in this Preserve are proposed for hiking and equestrian use.

 Multiple-use (including bikes) proposed on the Bay Area Ridge Trail once a safe through trail connection is secured.

	Existing Public Trails		Potential Bay Area Ridge Trail Corridor		Existing Parking Area		Unpaved Ranch / Patrol Road	  0 625 1,250 2,500 Feet
	Proposed Trail Additions		Proposed Interpretive Site		Proposed Parking Area		Existing Paved Road	
							Highway	Map created by MROSD for the La Honda Creek Open Space Preserve Master Plan, October 2007

# RESOURCE MANAGEMENT



<ul style="list-style-type: none"> <li> Conservation Management Unit: area closed for resource protection</li> <li> Improve road drainage or alignment</li> <li> Develop/implement erosion control plan</li> </ul>	<ul style="list-style-type: none"> <li> Replace or extensively repair bridge</li> <li> Fire safety treatment: fuel break/defensible space</li> <li> Restore riparian area, install fencing</li> </ul>	<ul style="list-style-type: none"> <li> Monitor for fish passage &amp; population</li> <li> Manage ponds for sensitive species</li> <li> Stream protection corridor</li> </ul>	<ul style="list-style-type: none"> <li> Conservation grazing (grassland areas)</li> <li> Conserve &amp; study rare plant occurrence</li> <li> Remediate soil contamination</li> </ul>	<ul style="list-style-type: none"> <li> Preserve local cultural landmark</li> <li> Assess historical significance of structure(s)</li> </ul>
--	---	--	---	--

**Habitat/Vegetation Types**

- Forest
- Woodland
- Shrubland
- Grasslands
- Unvegetated or rural residential

0 625 1,250 2,500  
Feet

Map created by MROSD for the La Honda Creek Open Space Preserve Master Plan, October 2007

# Open House

## LA HONDA CREEK OPEN SPACE PRESERVE MASTER PLAN

### YOU ARE INVITED TO ATTEND THE UPCOMING OPEN HOUSE

**TUESDAY, DECEMBER 4, 2007**

**4:00 P.M. TO 7:00 P.M.**

The Mountain Terrace  
17285 Skyline Boulevard  
Woodside, California 94062

Located at the corner of Skyline Boulevard (Highway 35) and Woodside Road (Highway 84), across the street from Alice's Restaurant.

**Participation is key to a great plan! Please join us at this informal event to preview the Draft Plan.**

Please contact us if you would like to be removed from the Master Plan mailing list.

The mission of the MIDPENINSULA REGIONAL OPEN SPACE DISTRICT is to acquire and preserve a regional greenbelt of open space land in perpetuity; protect and restore the natural environment; and provide opportunities for ecologically sensitive public enjoyment and education.

