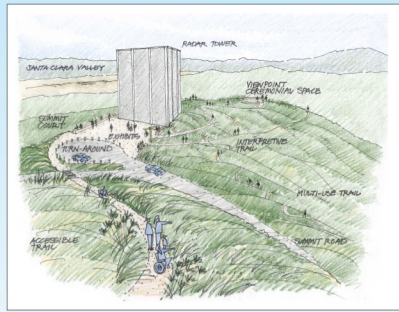




MOUNT UMUNHUM ENVIRONMENTAL RESTORATION AND PUBLIC ACCESS PLAN

Midpeninsula Regional Open Space District

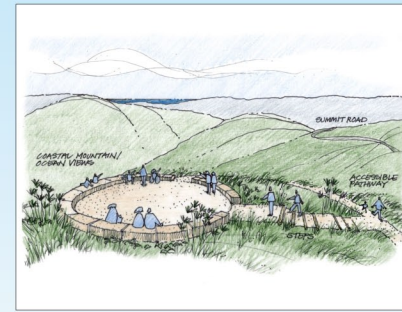
Site Overview



1A Summit Court / Radar Tower



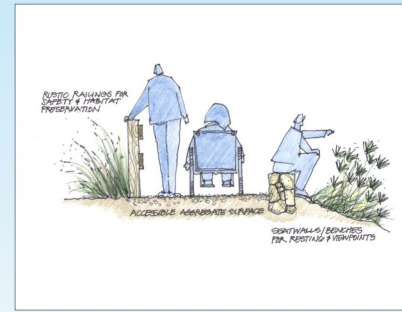
1B Summit Court / Tower Foundation



2 Viewpoint / Ceremonial Space



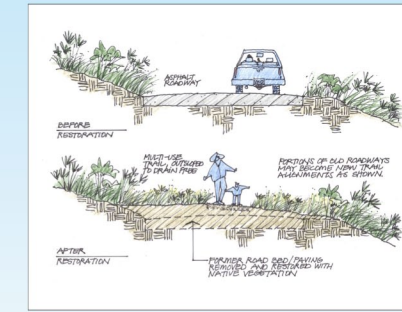
3 ADA-accessible Interpretive Trail



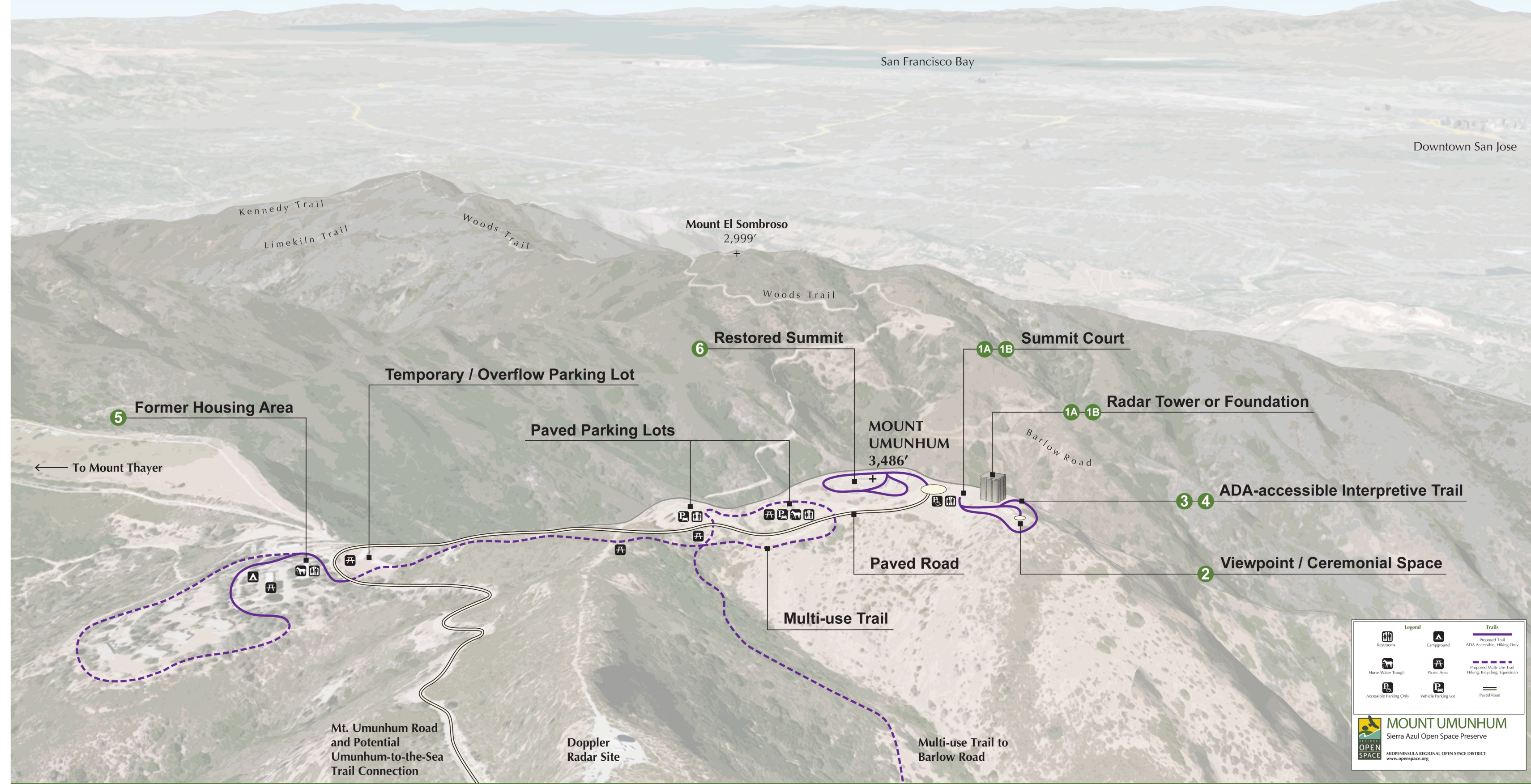
4 ADA-accessible Trail Features



5 Potential Backpack Camp



6 Restoration / Road Removal



Legend		Trails	
	Restrooms		Proposed Trail
	Campground		ADA Accessible, Hiking Only
	Home Water Trough		Proposed Multi-Use Trail
	Accessible Parking Only		Hiking, Bicycling, Equestrian
	Picnic Area		Paved Road
	Vehicle Parking Lot		