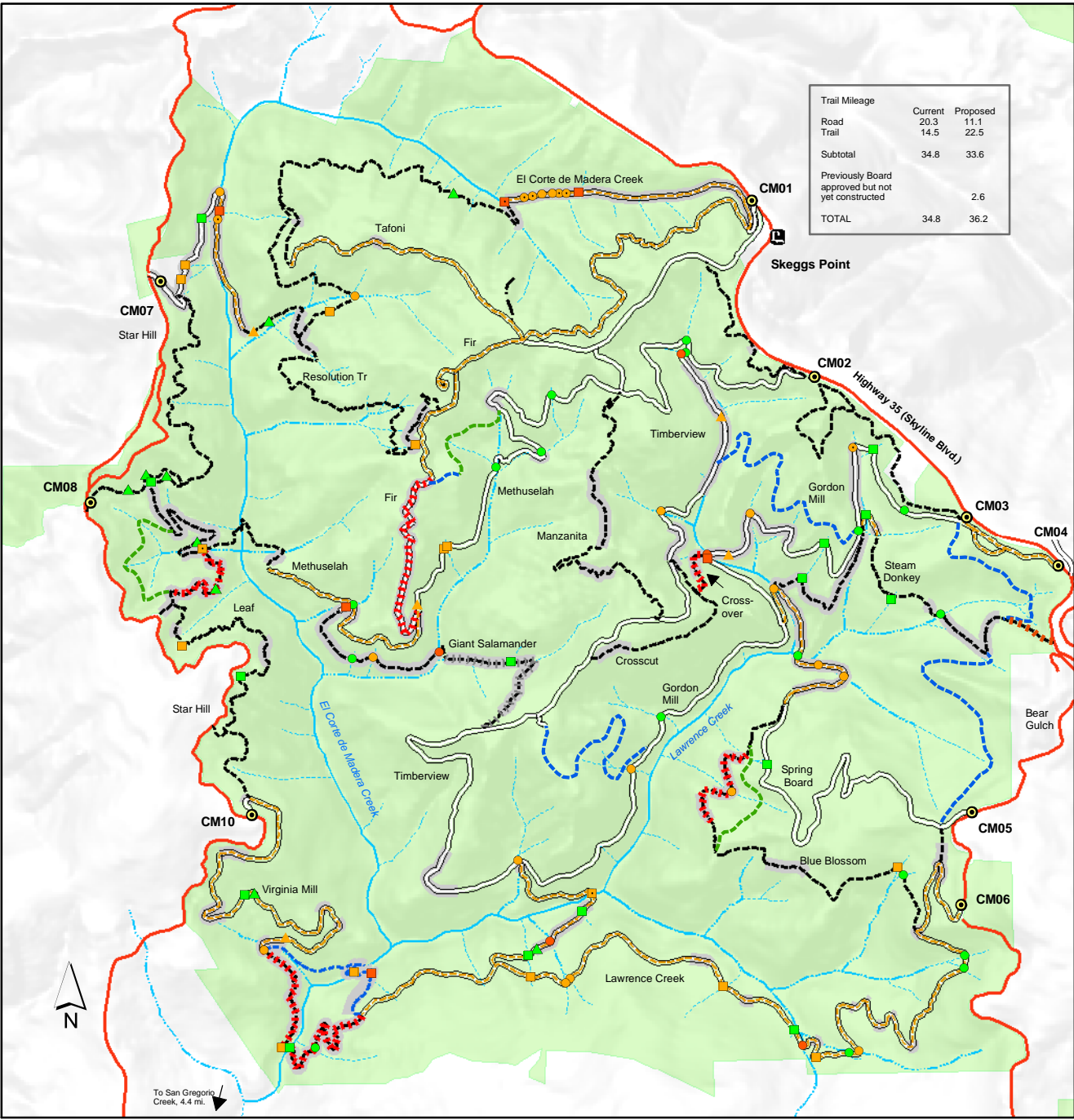


# El Corte de Madera Creek Open Space Preserve Watershed Protection Program: Erosion Control, Sediment Reduction, and Trail Restoration Project Locations



Trail Mileage		
	Current	Proposed
Road	20.3	11.1
Trail	14.5	22.5
Subtotal	34.8	33.6
Previously Board approved but not yet constructed		2.6
<b>TOTAL</b>	<b>34.8</b>	<b>36.2</b>

### Roads and Trails

- Paved Road
- Multiple Use Unpaved Patrol Road
- Multiple Use Trail
- - - Hiking-only Trail
- - - Proposed Trails / Realignments (Board-Adopted in 1996-98)

### Watershed Protection Recommendations

- Upgrade for Long-Term Erosion Control
- ▨ Close and Restore
- ▨ Reconstruct and Realign Trail (Further Study Required)
- ▨ Proposed Realignment
- ▨ Reduce from Road-width to Trail-width

### Other Watershed Protection Sites for Erosion Control

- ▲ Minor Landslide
- Bridge
- Rock Ford
- Culvert
- Ditch Relief Culvert

- Priority**
- High
  - Moderate
  - Low

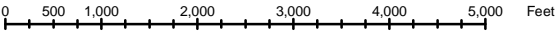


Figure 2. Project Location Map