

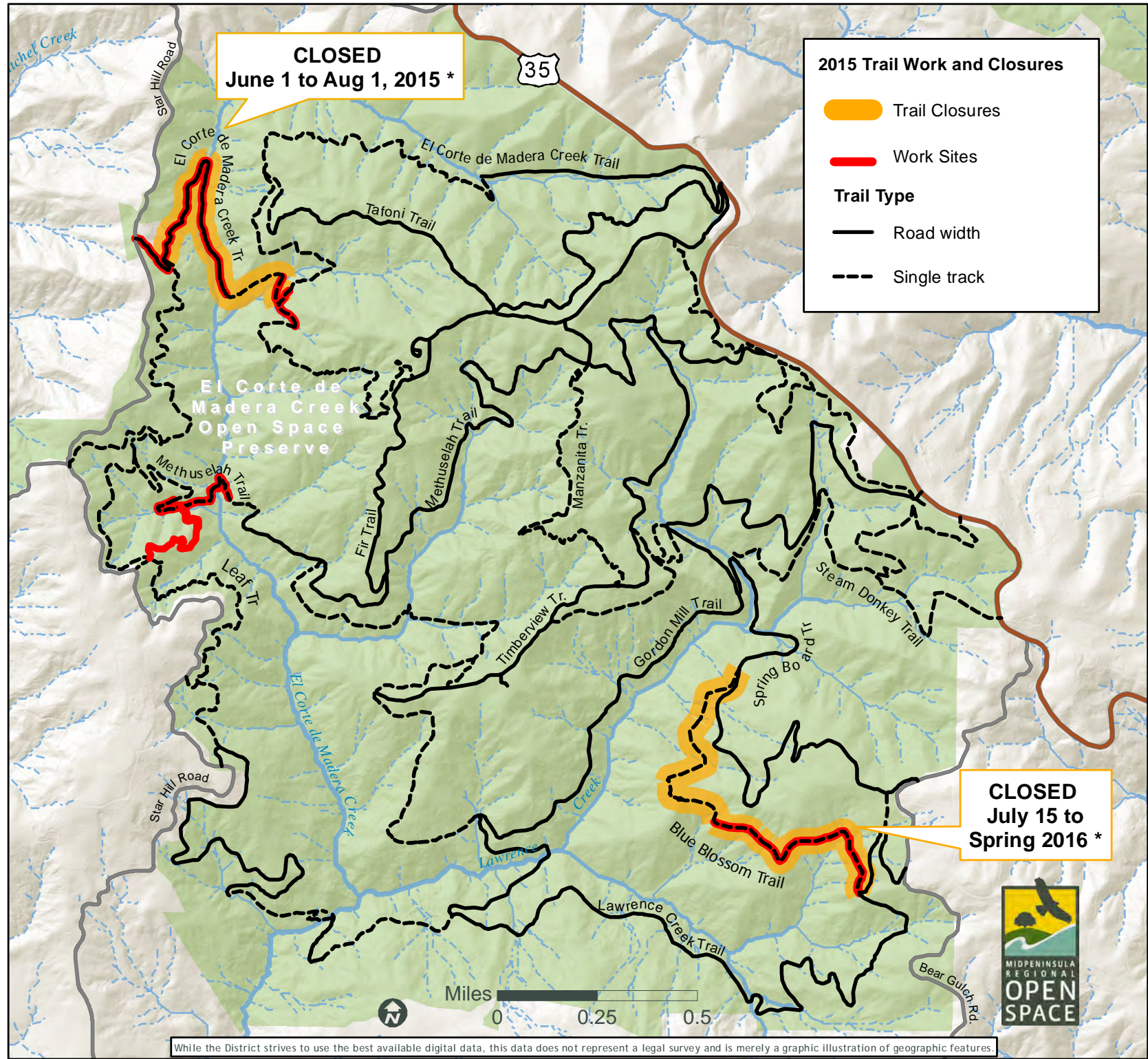
El Corte de Madera Creek Open Space Preserve
Trail Work and Closures

Work during 2015 on the remaining moderate and high priority **Watershed Protection Program road and trail projects** within the El Corte de Madera Creek Open Space Preserve is planned to occur between May and October, 2015. Any Trail Closures will be posted in advance on the trail conditions webpage and posted at signboards and important trail heads in the Preserve.

Work Site	Work Effort	*Anticipated Work Dates in 2015:
Blue Blossom Trail (from Springboard Trail to Lawrence Creek Trail)	Convert 2,000 feet of road to trail, install new puncheons (small trail bridges) and/or or culverts to improve trail drainage.	CLOSED JULY 15 through spring 2016. Access to Lawrence Creek and Springboard trails will remain open.
South leaf Trail (Work is on former trail only)	Abandon and recontour old road (no longer in use), install waterbars to drain and formally abandon old road	No Closures. Trail is not currently open. Construction from May 1 to June 1, 2015
El Corte de Madera Creek Trail (from North Leaf Trail to Resolution Trail)	Install reverse grade dips, rock 3 ford crossings, convert a portion of road to trail, reroute a portion of trail, rock and crown portions of trail, clean inside ditch and install relief culvert	CLOSED JUNE 1 to AUGUST 1, 2015 Equipment will be working on the trail. Please use other trails during this time.
Resolution Trail (Primarily near the junction with El Corte de Madera Creek Trail)	Install reverse grade dips	No closures anticipated. Equipment will be working from June 1 to August 1. Please use caution.
Methuselah Trail (at El Corte de Madera Creek Crossing)	Install 32' bridge crossing the creek, install new 24'bridge on western approach, upgrade trail to connect the new bridges.	No closures anticipated. Equipment will be working on the trail from May 1 to June 30. Please use caution.

Implementation of the Watershed Protection Plan is designed to prevent sediment delivery to Lawrence and El Corte de Madera Creeks in order to improve water quality for downstream fish species, improve overall watershed health, and improve the trail experience for Preserve visitors.

Comments or Questions Please Contact the District Project Manager:
Julie Andersen - 650-691-1200



*Anticipated work dates are subject to change