



Midpeninsula Regional
Open Space District

FUNDING BY

MEASURE AA

2014 OPEN SPACE BOND

BOND OVERSIGHT COMMITTEE – MEASURE AA

March 24, 2026

AGENDA ITEM 2

AGENDA ITEM

Progress update on Measure AA Commitments through the Fiscal Year ending June 30, 2025

GENERAL MANAGER’S RECOMMENDATION

Review the progress on Measure AA Commitments through the Fiscal Year ending June 30, 2025. No Committee action required.

SUMMARY

This original report was presented to the Board on December 3, 2025, at its annual strategic planning retreat. This information provides a progress update through end of Fiscal Year 2024-25 (FY25) on the progress made by Midpeninsula Regional Open Space District (District) to fulfill its Measure AA Commitments, including a summary highlighting key accomplishments to date and those completed in FY25. This report also provides the percent completion rate for each of the 25 MAA Portfolios by net spend (with grants) and gross spent (minus grants) of the MAA funding allocations, and by the estimated completion of all the priority actions within the various portfolios. Overall portfolio completion aligns well against the 11-year span of Measure AA (at 37% of the 30-year total timeframe), with total net spend between 37.1% and 37.6% and gross spend between 46.2% and 48.0%, and priority action completion estimated between 49.9% and 53.2%. Finally, the report provides a status update of the most recent MAA 5-Year Project List.

BACKGROUND

In June 2014, voters approved Measure AA (MAA), a 30-year, \$300 million general obligation bond to protect natural and working lands, open preserve lands to the public, construct public access improvements such as new trails and parking/staging areas, and restore and enhance open space land, forests, streams, watersheds, and coastal ranch areas. MAA projects are grouped in 25 portfolios organized by geographic area within District boundaries.

In June 2023, the Board of Directors (Board) confirmed the completion and approved the closing of Portfolio 18 (South Bay Foothills: Saratoga-to-the-Sea Trail and Wildlife Corridor) and Portfolio 23 (Sierra Azul: Mt. Umunhum Public Access and Interpretation Projects). The remaining **\$6.4 million** was reallocated to further support Portfolio 3 (Purisima Creek Redwoods: Purisima-to-Sea Trail, Watershed Protection and Conservation Grazing) (R-23-67).

DISCUSSION

The fiscal year ending June 30, 2025 (FY25) marks the completion of the 11th year of MAA funding. Major MAA milestones *from 2014 through FY25* include:

- **Land protected:** 10,225 acres
Note: This figure is lower than last year's due to prior miscalculations mostly related to the expiration of the Johnston Ranch (POST) lease and management agreement. In 2021, the Board authorized the purchase of Johnston Ranch, and the District entered into a lease and management agreement with POST, at which time approximately 644 acres were added to the total MAA land protected acreage. Escrow did not close until 2024 when another 644 acres were mistakenly added to total MAA land protected acreage, essentially double-counting Johnston Ranch.
- **Land opened to the public:** 5,868 acres
- **Trails provided:** 35.75 miles
Note: This number represents miles of trail opened to the public *through FY25* (June 30, 2025) and therefore does not include the recent November opening of 5.8 miles of new trail at La Honda Creek Open Space Preserve.
- **Parking areas provided:** 3 (126 total spaces)
- **Coastside project investments:** \$48.07 million
- **Conservation Grazing Program:**
 - Seven (7) acquisitions totaling 6,739 acres that include rangelands supporting five (5) grazing units covering 4,878 leased acres with 2,212 acres of active pasture.
 - Nine (9) grazing infrastructure projects, including fencing, stock pond improvements, and water infrastructure to expand grazing units, increase stock capacity, and protect natural resources.

In FY25 specifically, major Measure AA milestones include:

- **Land protected: 377.7 acres total**
 - *El Sereno Open Space Preserve (36.6 acres):* Acquired land to support future trails development and create a safe crossing over Highway 17 to link vast trail networks on either side of the highway.
 - *Sierra Azul Open Space Preserve (67.6 acres):* Secured land needed for the future Mount Umunhum-to-the-Sea trail and protected wildlife connectivity for species such as mountain lions.
 - *Russian Ridge Open Space Preserve (273.5 acres):* Preserved woodlands, grasslands, redwood forest, and waterways that provide vital habitat.
- **Trails provided**
 - *Bear Creek Redwoods Open Space Preserve:* Constructed and opened about four miles of new trails for hikers and equestrians in the northeastern area of the preserve.
 - *La Honda Creek Open Space Preserve:* Constructed 1.6 miles of new trail, completing the long-awaited connection between upper and lower La Honda Creek Preserve. Also initiated major improvements to 4.2 miles of existing ranch

roads, which were completed in early FY26. In November 2025 (FY26), a total of 5.8 miles of trail were opened to the public.

- **Planning milestones**

- *Highway 17 Crossings Project*: Finalized designs for a wildlife undercrossing and a trail overcrossing near Lexington Reservoir to connect 50 miles of regional trails and 30,000 acres of protected land, help reduce vehicle-animal collisions, and improve wildlife connectivity.
- *Hawthorns Area Plan*: Completed the public access working group and the programming and conceptual planning phase of the project with specific public access recommendations identified and affirmed by the Board for the larger area plan.

For a full list of MAA accomplishments and portfolio progress since 2014, members of the public are encouraged to view the most recent **Measure AA Bond Annual Accountability Report**, available on the District's website at openspace.org/who-we-are/reports.

Measure AA Completion Percentage

Table 1 estimates the overall MAA completion percentage as of FY25 (June 30, 2025), as well as the estimated completion percentage for each of the 25 portfolios. To determine these percentages, staff use two estimation methods in columns 1 and 2:

1. **Progress Indicators (column 1)**: Based on the projects or tasks completed in FY25, using the Portfolio Progress Indicators in the MAA Annual Accountability Report. These indicators estimate completion levels using discrete percentages: 0%, 25%, 50%, 75%, or 100%.
2. **Expenditures (column 2)**: Based on expenditures from inception through FY25, reflecting the approved portfolio reallocation from Portfolios 18 and 23 to Portfolio 3.

Staff then calculate the weighted completion percentage using two different weighting methods in columns 3 and 4:

1. **Equal Weighting (column 3)**: Each portfolio is given equal weighting (e.g., each of the 25 portfolios is 1/25th or 4% of the total \$300 million allocation).
2. **By Funding Allocation (column 4)**: Each portfolio is weighted based on its funding allocation relative to the total \$300 million bond funding, with the approved reallocations included.

A matrix of weighted averages is shown in the bottom green section of Table 1. Overall portfolio completion is estimated between **49.9% and 53.2%**, with total net bond expenditures between **37.1% and 37.6%**. If grants and interest income are excluded, the total net bond spend would be between **46.2% and 48.0%**. This progress aligns with the 11-year span reflected in this analysis through the end of FY25, or approximately one-third (**37%**) of the 30-year Measure AA timeframe.

Table 1. MAA Completion Estimate

MAA Overall Completion Estimate		Estimated Total Percent Complete of Portfolio Commitments			
		Average of the Portfolio Projects Estimated Completion	Inception-to-Date Through FY25 Total Net* Spend as % of Allocation	Portfolio Weighting	
				Equal Weight	By Allocation \$
Portfolio 1	Miramontes Ridge	40%	17%	4.0%	9.3%
Portfolio 2	Regional	100%	69%	4.0%	1.7%
Portfolio 3	Purisima Creek Redwoods	44%	63%	4.0%	4.7%
Portfolio 4	El Corte de Madera Creek	58%	12%	4.0%	2.8%
Portfolio 5	La Honda Creek	63%	44%	4.0%	3.9%
Portfolio 6	Windy Hill	8%	4%	4.0%	4.2%
Portfolio 7	La Honda Creek	88%	85%	4.0%	4.9%
Portfolio 8	La Honda Creek and Russian Ridge	19%	43%	4.0%	5.1%
Portfolio 9	Russian Ridge	100%	11%	4.0%	1.9%
Portfolio 10	Coal Creek	100%	40%	4.0%	2.7%
Portfolio 11	Rancho San Antonio	50%	3%	4.0%	3.6%
Portfolio 12	Peninsula/South Bay Cities	8%	0%	4.0%	0.3%
Portfolio 13	Cloverdale Ranch	50%	37%	4.0%	5.2%
Portfolio 14	Regional	13%	0%	4.0%	1.3%
Portfolio 15	Regional	25%	13%	4.0%	16.9%
Portfolio 16	Long Ridge	0%	0%	4.0%	1.7%
Portfolio 17	Regional	50%	21%	4.0%	2.6%
Portfolio 18	South Bay Foothills	100%	100%	4.0%	0.4%
Portfolio 19	El Sereno	88%	54%	4.0%	0.8%
Portfolio 20	South Bay Foothills	50%	19%	4.0%	4.7%
Portfolio 21	Bear Creek Redwoods	90%	100%	4.0%	5.8%
Portfolio 22	Sierra Azul	50%	22%	4.0%	2.2%
Portfolio 23	Sierra Azul	100%	100%	4.0%	7.3%
Portfolio 24	Sierra Azul	13%	16%	4.0%	3.4%
Portfolio 25	Sierra Azul	25%	55%	4.0%	2.7%
All Portfolios				100.0%	100.0%
Total MAA Estimated Percent Complete					
Average of Portfolio Projects Estimated Completion				53.2%	49.9%
Total Net* Spend and Committed as % of Allocation				37.1%	37.6%
Total Gross Spend and Committed as % of Allocation				48.0%	46.2%
* Net expenditure after reducing for grants					

FY24-FY28 MAA Five-Year Project List: Status Update

In December 2021, the Board approved the FY24-FY28 MAA Five-Year Project List and Optional List (Attachment 3). This document has been guiding the development of the District's annual Budget and Action Plan and includes 36 projects planned for initiation by FY28.

Table 2 provides a status update on these projects as of June 30, 2025. Project statuses are summarized as follows: eight (8) project scope items completed, 24 in progress, one (1) deferred, and three (3) not yet started, with details provided below.

Table 2. FY24-FY28 MAA Five-Year List Project Statuses as of June 30, 2025

MAA Portfolio No.	Project Name	Status
MAA01- Miramontes Ridge: <i>Gateway to the Coast Public Access, Stream Restoration and Agriculture Enhancement</i>	Madonna (Vehicle) Bridge Replacement	In Progress
	Water Infrastructure Development (Water Supply Improvements)	In Progress
	Public Access and Land Preservation (Johnston Ranch Land Acquisition)	Complete
MAA02- Regional: <i>Bayfront Habitat Protection and Public Access Partnerships</i>	Stevens Creek Tidal (or Managed Pond) Wetland Restoration	In Progress
MAA03- Purisima Creek Redwoods: <i>Purisima-to-Sea Trail, Watershed Protection, and Conservation Grazing</i>	Purisima-to-the-Sea Trail and Parking Area	In Progress
	Pond Restoration	Complete
	Site Clean Up and Soil Remediation	In Progress
MAA04- El Corte de Madera Creek: <i>Bike Trail and Water Quality Projects</i>	Pursue Land Conservation Opportunities	In Progress
MAA05- La Honda Creek: <i>Upper Area Recreation, Habitat Restoration and Conservation Grazing Projects</i>	Phase 2 - Bridge Replacements (2)	In Progress
	La Honda Creek Parking and Trailhead Access	In Progress
	Grazing and Water Systems Infrastructure	Complete
	Pursue Land Conservation Opportunities	In Progress
	La Honda Fisheries Restoration	In Progress
	Phase II Trail: Red Barn to Main Ranch Road (connects to La Honda Creek loop)	In Progress*
	Phase II Trails: Connection between Red Barn/Central area and Upper La Honda Creek	In Progress*
MAA06- Windy Hill: <i>Trail Improvements, Preservation and Hawthorns Area Historic Partnership</i>	Hawthorns Area Plan	In Progress
	Hawthorns Area Plan Implementation	Not Started
MAA07- La Honda Creek: <i>Driscoll Ranch Public Access, Endangered Wildlife Protection and Conservation Grazing</i>	Forest Restoration and Road Rehabilitation	In Progress
MAA10- Coal Creek: <i>Reopen Alpine Road for Trail Use</i>	Alpine Road Trail Improvements	Complete
	Meadow Trail Re-route	Not Started
MAA11- Rancho San Antonio: <i>Interpretive Improvements, Refurbishing, and Transit Solutions</i>	Non-motorized Mobility, Transit Connections, and Parking Alternatives	In Progress
MAA16- Long Ridge: <i>Trail, Conservation and Habitat Restoration Projects (Saratoga)</i>	Long Ridge Parking	Not Started**
	Long Ridge Trail Connections to Eagle Rock and Devil's Canyon	Deferred***

MAA19- El Sereno: <i>Dog Trails and Connections</i>	Regional Trail Connection to Sanborn & Lexington County Parks	In Progress
	Spooky Knoll Trail	In Progress
MAA20- South Bay Foothills: <i>Wildlife Passage and Ridge Trail Improvements</i>	HWY 17 Bay Area Ridge Trail Crossing	In Progress
	HWY 17 Wildlife Crossing	In Progress
MAA21- Bear Creek Redwoods: <i>Public Recreation and Interpretive Projects</i>	Alma College Site Rehabilitation	Complete
	Phase II Trails: Multi-Use Links	In Progress
	Phase II Trails: Public Loop Trail to the Stables	Complete
	Phase II Trails: Briggs Creek Trail	Complete
	Phase II Trails: Alma College Loop Trail	Complete
	Bear Creek Stables Repairs	In Progress
MAA22- Sierra Azul: <i>Cathedral Oaks Public Access and Conservation Projects</i>	Wildlife Crossing Improvements on Alma Bridge Rd	In Progress
	Pursue Land Conservation Opportunities	In Progress
MAA24- Sierra Azul: <i>Rancho de Guadalupe Family Recreation</i>	Pursue Land Conservation Opportunities	In Progress

* Project was in progress at the end of FY25 and completed in FY26 prior to this report.

** Initiated this feasibility study in FY26.

*** Project deferred to line up with the Long Ridge Parking Project, which is pending staff capacity to begin with a feasibility study.

Moving forward, the new 20-Year MAA Project Plan (see separate Board report in this same packet) will be replacing the five-year project list.

FISCAL IMPACT

None

PRIOR BOARD AND COMMITTEE REVIEW

- **December 3, 2025 (Board Meeting):** Progress update on Measure AA Commitments through the Fiscal Year ending June 30, 2025 ([R-25-153](#), [minutes](#))

PUBLIC NOTICE

Public notice was provided as required by the Brown Act.

CEQA COMPLIANCE

This item is not a project subject to the California Environmental Quality Act.

NEXT STEPS

Staff will continue to track Measure AA project progress and update the Measure AA Accountability Report annually. The 20-Year MAA Project Plan is replacing the Five-Year Project List and will be revised as needed over time.

Attachment(s)

1. Land Acquisitions Funded by Measure AA Map
2. Measure AA Trails Completed and Planned Map
3. Measure AA Five-Year Project List and Optional Project List for FY24 through FY28

Responsible Department Head:

Rafaela Ocegüera, Budget & Finance Manager

Prepared by:

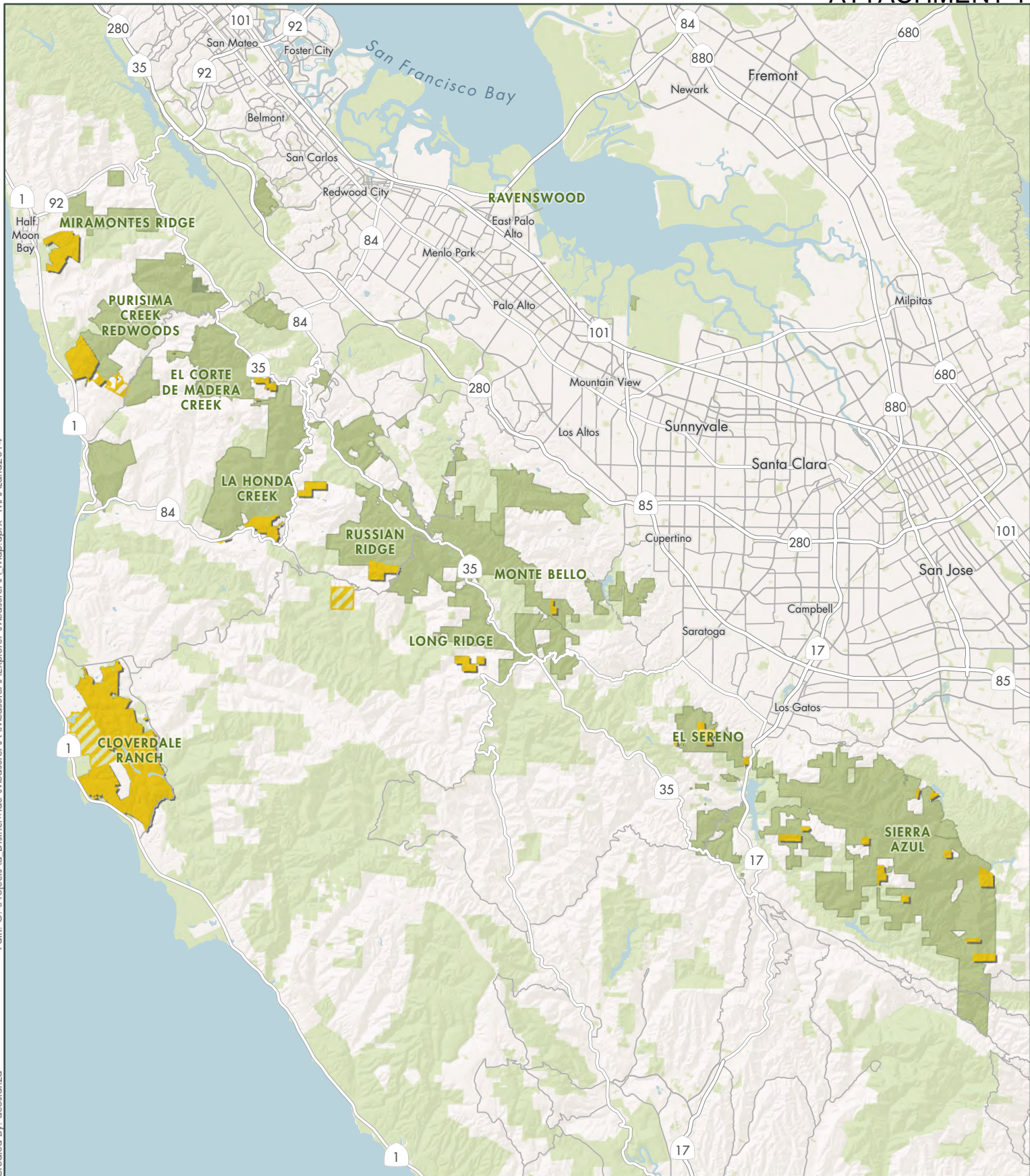
Rafaela Ocegüera, Budget & Finance Manager
Elissa Martinez, Budget & Analysis Supervisor
Jordan McDaniel, Management Analyst I
Samantha Powell, Management Analyst I

Contact person:

Elissa Martinez, Budget & Analysis Supervisor

Path: G:\Projects\Districtwide\MeasureAA\MeasureAAExplorer\MeasureAA_Map.aprx - MAA\land2014

Created By: acostanza



Land Acquisitions Using MAA Funds

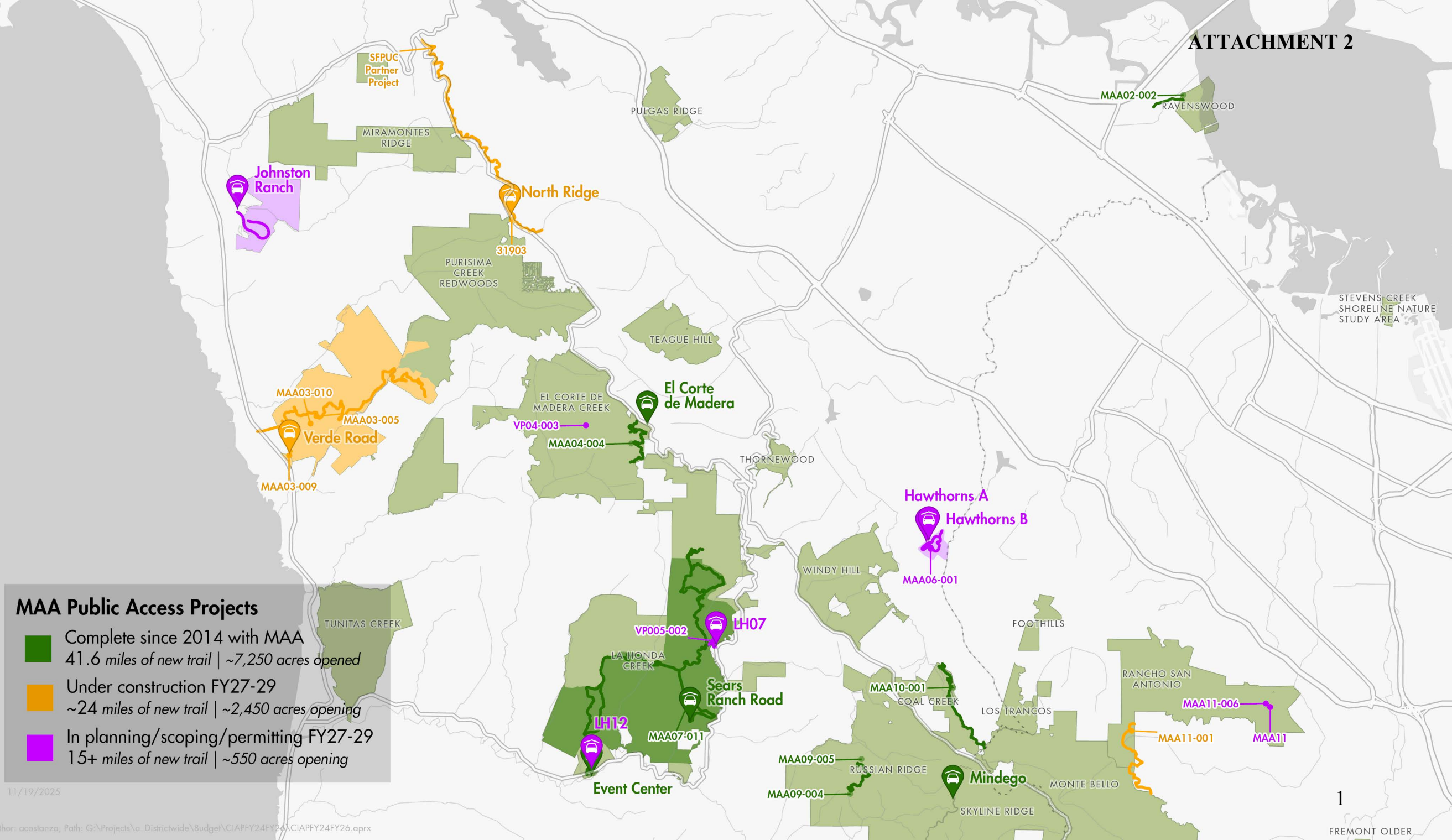
Land purchased or augmented by grant funds since 2014

- Midpen preserves
- Other protected lands
- Private property
- MAA land: Fee
- MAA land: Easements, management lease agreements

Midpeninsula Regional
Open Space District
(Midpen)
11/19/2025

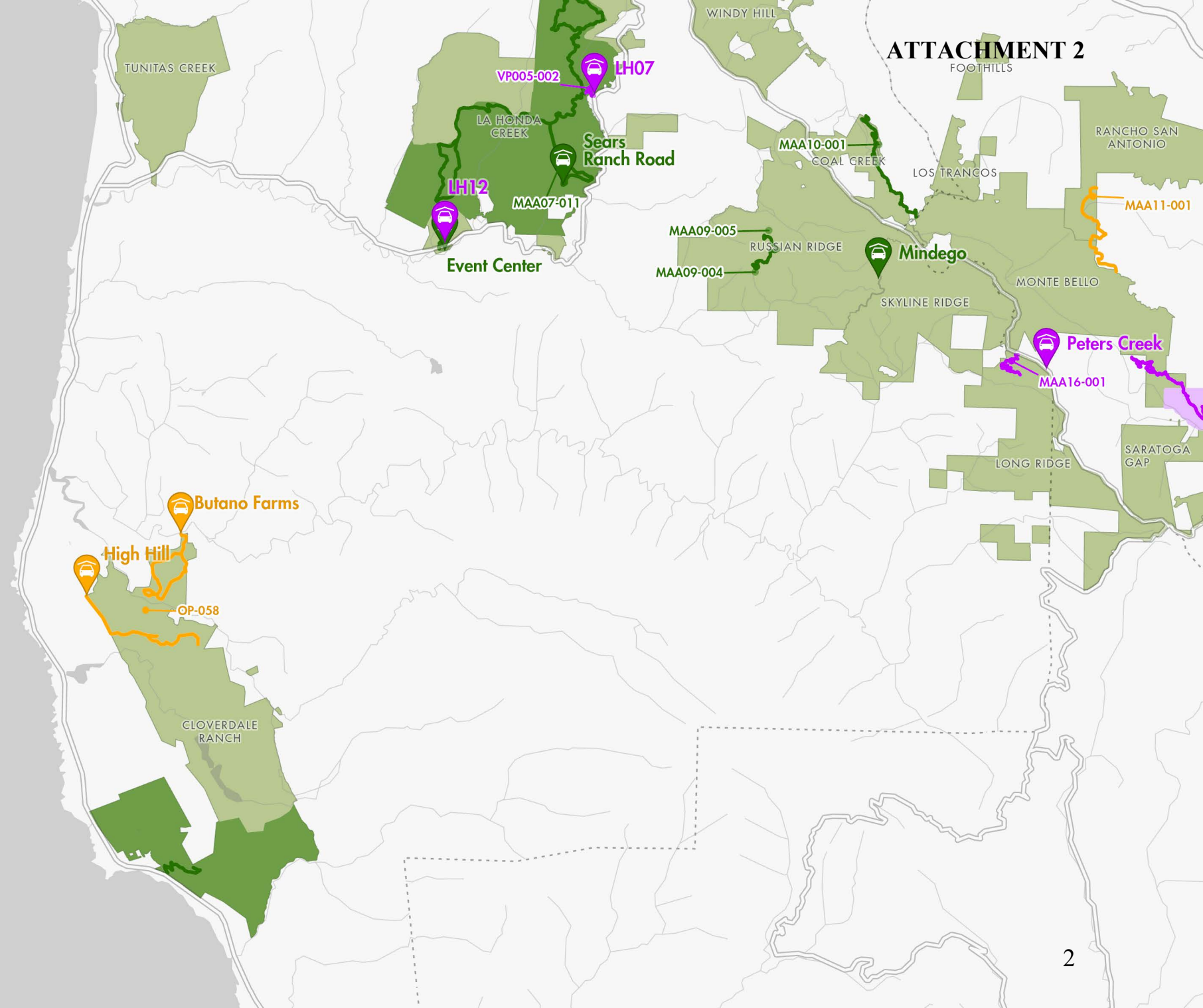


While the District strives to use the best available digital data, these data do not represent a legal survey and are merely a graphic illustration of geographic features.



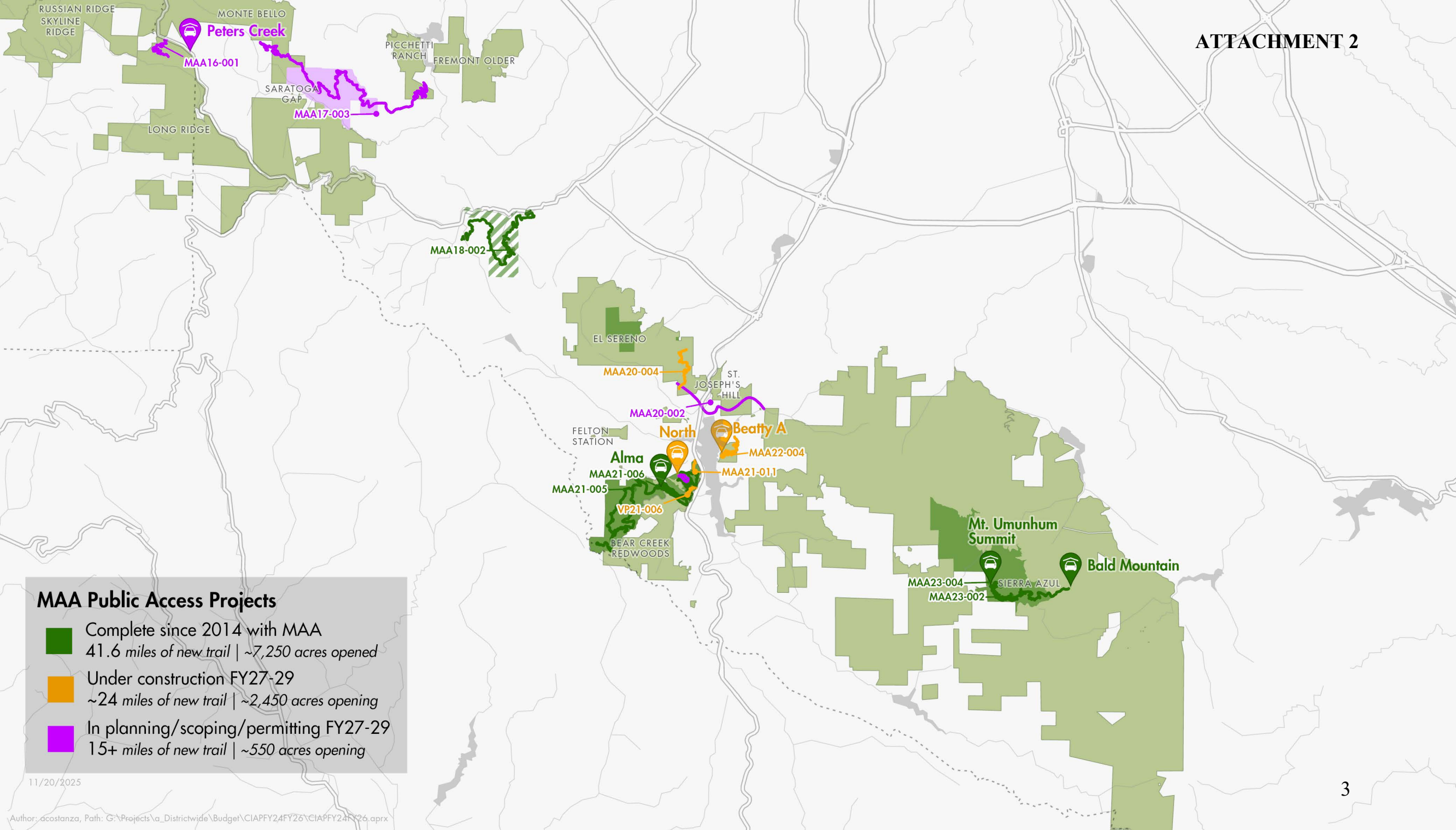
MAA Public Access Projects

- Complete since 2014 with MAA
41.6 miles of new trail | ~7,250 acres opened
- Under construction FY27-29
~24 miles of new trail | ~2,450 acres opening
- In planning/scoping/permitting FY27-29
15+ miles of new trail | ~550 acres opening



MAA Public Access Projects

- Complete since 2014 with MAA
41.6 miles of new trail | ~7,250 acres opened
- Under construction FY27-29
~24 miles of new trail | ~2,450 acres opening
- In planning/scoping/permitting FY27-29
15+ miles of new trail | ~550 acres opening



MAA Public Access Projects

- Complete since 2014 with MAA
41.6 miles of new trail | ~7,250 acres opened
- Under construction FY27-29
~24 miles of new trail | ~2,450 acres opening
- In planning/scoping/permitting FY27-29
15+ miles of new trail | ~550 acres opening

11/20/2025

MAA 5 Year Recommended Projects List FY 2023-24 through FY 2027-28

MAA Portfolio No.	Project Name	Project Description
AA01- Miramontes Ridge: <i>Gateway to the Coast Public Access, Stream Restoration and Agriculture Enhancement</i>	Madonna Bridge Replacement	Replace current interior bridge with bridge or culvert crossing. The current bridge is weight limited and does not allow for emergency vehicle access.
AA01- Miramontes Ridge: <i>Gateway to the Coast Public Access, Stream Restoration and Agriculture Enhancement</i>	Water Infrastructure Development	Investigate and implement alternative water supply at Madonna Creek Ranch to replace agricultural water currently provided through in-stream impoundment on steelhead fisheries stream. Complete evaluation of restoration plans for Madonna Creek for steelhead and California-red legged frog.
AA01- Miramontes Ridge: <i>Gateway to the Coast Public Access, Stream Restoration and Agriculture Enhancement</i>	Public Access and Land Preservation	Continue to work with City of Half Moon Bay, State Parks and other public and private entities to improve public access and preserve scenic open space at Johnston Ranch area of Miramontes Ridge Open Space Preserve. Partner with the City of Half Moon Bay on shared/expanded parking and new trails at Johnston House and Johnston Ranch Uplands properties.
AA02- Regional: <i>Bayfront Habitat Protection and Public Access Partnerships</i>	Stevens Creek Tidal Wetland Restoration	Implement Board direction to improve snowy plover habitat in the short term. Pursue partnership opportunities with South Bay Salt Ponds Restoration Project, San Francisco Estuary Institute, NASA, SCVWD, Google, and local Cities.
AA03- Purisima Creek Redwoods: <i>Purisima-to-Sea Trail, Watershed Protection, and Conservation Grazing</i>	Purisima-to-the-Sea Trail and Parking Area	Pursue new trail alignment from Bald Knob to Verde Road, with a new parking area off Verde Road and trail connection to the Cowell parking area along Highway 1; the new preserve trail would connect the Bay Area Ridge Trail on Hwy 35 to the Coastal Trail on Hwy 1.
AA03- Purisima Creek Redwoods: <i>Purisima-to-Sea Trail, Watershed Protection and Conservation Grazing</i>	Pond Restoration	Restore upland ponds to enhance habitat for California red-legged frog and other sensitive aquatic species and improve water availability for cattle grazing.

MAA 5 Year Recommended Projects List FY 2023-24 through FY 2027-28

MAA Portfolio No.	Project Name	Project Description
AA03- Purisima Creek Redwoods: <i>Purisima-to-Sea Trail, Watershed Protection, and Conservation Grazing</i>	Site Clean Up and Soil Remediation	Conduct site clean up and soil remediation around existing empty oil tank to address safety issues that predate District acquisition of the property (Purisima Uplands)
AA04- El Corte de Madera Creek: <i>Bike Trail and Water Quality Projects</i>	Pursue Land Conservation Opportunities	Continue to seek or respond to opportunities to acquire open space lands to complete gaps in the Bay Area Ridge Trail in the vicinity of El Corte De Madera Creek Open Space Preserve.
AA05- La Honda Creek: <i>Upper Area Recreation, Habitat Restoration and Conservation Grazing Projects</i>	Phase 2 - Bridge Replacements (2)	Design, engineering, permitting, CEQA, and replacement of one bridge if necessary and replace one major culvert at LH04 off Skyline Boulevard (located in northernmost area).
AA05- La Honda Creek: <i>Upper Area Recreation, Habitat Restoration and Conservation Grazing Projects</i>	La Honda Creek Parking and Trailhead Access	Implement Board direction to proceed with Public Access Working Group input and Planning and Natural Resources Committee recommendations to conduct a feasibility study for a suite of options to open public access to the central area of the preserve.
AA05- La Honda Creek: <i>Upper Area Recreation, Habitat Restoration and Conservation Grazing Projects</i>	Grazing and Water Systems Infrastructure	Complete grazing infrastructure improvements at Lone Madrone Ranch that improve fences, corrals, and stockwater to continue supporting the conservation grazing program while providing greater protections for streams and habitat.
AA05- La Honda Creek: <i>Upper Area Recreation, Habitat Restoration and Conservation Grazing Projects</i>	Pursue Land Conservation Opportunities	Continue to seek or respond to opportunities to acquire open space lands to complete gaps in the Bay Area Ridge Trail in the vicinity of La Honda Creek Open Space Preserve.
AA05- La Honda Creek: <i>Upper Area Recreation, Habitat Restoration and Conservation Grazing Projects</i>	La Honda Fisheries Restoration	Address erosion and sediment input from legacy roadcuts/skid roads within the Conservation Management Unit to improve water quality and fisheries/riparian habitat.

MAA 5 Year Recommended Projects List FY 2023-24 through FY 2027-28

MAA Portfolio No.	Project Name	Project Description
AA05- La Honda Creek: <i>Upper Area Recreation, Habitat Restoration and Conservation Grazing Projects</i>	Phase II Trail: Red Barn to Main Ranch Road (connects to La Honda Creek loop)	Design and construct one of two Phase II trails as approved in the Master Plan (Trail 5 connection to Driscoll Ranch via main Ranch Road OR Trail 9 Weeks Creek).
AA05- La Honda Creek: <i>Upper Area Recreation, Habitat Restoration and Conservation Grazing Projects</i>	Phase II Trails: Connection between the Red Barn/Central area and Upper La Honda Creek	Design and construct a new multi-use trail to connect the Red Barn/central area of the preserve to trails located in the former Dyer area of upper La Honda Creek. This multi-use trail would offer an opportunity to extend the regional Bay Area Ridge Trail and in the future, potentially connect trail users to El Corte de Madera Creek Preserve.
AA06- Windy Hill: <i>Trail Improvements, Preservation and Hawthorns Area Historic Partnership</i>	Hawthorns Area Plan	Complete the Hawthorns Area Plan, conduct CEQA review and coordinate with the Town on the permitting process.
AA06- Windy Hill: <i>Trail Improvements, Preservation and Hawthorns Area Historic Partnership</i>	Hawthorns Area Plan Implementation	Working with partners, implement area plan elements, including new public access improvements and natural resource enhancements.
AA07- La Honda Creek: <i>Driscoll Ranch Public Access, Endangered Wildlife Protection and Conservation Grazing</i>	Forest Restoration and Road Rehabilitation	Conduct forestry restoration activities to improve forest health and sustainability and undertake watershed/road improvements located outside of the Conservation Management Unit (covered by MAA05).
AA10- Coal Creek: <i>Reopen Alpine Road for Trail Use</i>	Alpine Road Trail Improvements	Complete engineering design, CEQA review, permitting, and construct trail improvements to properly convert an abandoned road into a sustainable regional trail and reduce erosion of the old roadbed to improve downstream water quality.
AA10- Coal Creek: <i>Reopen Alpine Road for Trail Use</i>	Meadow Trail Re-route	Reroute an existing trail to improve public access and properly decommission a high priority sediment site to improve downstream water quality.

MAA 5 Year Recommended Projects List FY 2023-24 through FY 2027-28

MAA Portfolio No.	Project Name	Project Description
AA11- Rancho San Antonio: <i>Interpretive Improvements, Refurbishing, and Transit Solutions</i>	Non-Motorized Mobility, Transit Connections and Parking Alternatives	Engage stakeholders and partner agencies to explore and implement non-motorized mobility, transit options and parking alternatives for Rancho San Antonio. Currently underway, this project would provide high beneficial impact for recreational users and leverage partnerships.
AA16- Long Ridge: <i>Trail, Conservation and Habitat Restoration Projects (Saratoga)</i>	Long Ridge Parking	Initiate discussions with Santa Clara County Parks, Caltrans and other stakeholders to scope potential sites to formalize parking. Conduct feasibility study for parking/trailhead/restrooms options. (Requested by Director Kishimoto)
AA16- Long Ridge: <i>Trail, Conservation and Habitat Restoration Projects</i>	Long Ridge Trail Connections to Eagle Rock and Devil's Canyon	Formalize new 1-mile trail connections to the highly scenic Devils Canyon waterfall and Eagle Rock overlooking the Pescadero Creek watershed to prevent social trails that can degrade soils and vegetation. It may be possible to connect both sites with a loop trail through Tafoni sandstone formations. Consider opportunity to partner with the Bay Area Ridge Trail Council.
AA19- El Sereno: <i>Dog Trails and Connections</i>	Regional Trail Connection to Sanborn & Lexington County Parks	Pending the securing of trail easements, this project would complete a regional trail connection between El Sereno Open Space Preserve and Sanborn and Lexington Reservoir County Parks via the regional trail crossing at Highway 17.
AA19- El Sereno: <i>Dog Trails and Connections</i>	Spooky Knoll Trail	Located in the southeastern area of El Sereno Open Space Preserve, this proposed trail loop would enhance a regional trail corridor and potentially add to section to the Bay Area Ridge Trail from the Hwy 17 crossing to Sanborn County Park. Also provides a rare loop experience in the preserve.
AA20- South Bay Foothills: <i>Wildlife Passage and Ridge Trail Improvements</i>	HWY 17 Bay Area Ridge Trail Crossing	In conjunction with the wildlife crossing, implement a public trail crossing across Highway 17 to connect trail systems located to the east and west of the highway.
AA20- South Bay Foothills: <i>Wildlife Passage and Ridge Trail Improvements</i>	HWY 17 Wildlife Crossing	Work with partners to engineer and install wildlife crossing improvements at Highway 17.

MAA 5 Year Recommended Projects List FY 2023-24 through FY 2027-28

MAA Portfolio No.	Project Name	Project Description
AA21- Bear Creek Redwoods: <i>Public Recreation and Interpretive Projects</i>	Alma College Site Rehabilitation	Complete the Alma College site remediation and stabilization to safely open the area to public access, education, and interpretation.
AA21- Bear Creek Redwoods: <i>Public Recreation and Interpretive Projects</i>	Phase II Trails: Multi-Use Links	Design and construct new (or improve existing) trails, to provide a multi-use trail through the Preserve, linking the Los Gatos Creek Trail with Summit Road. Fulfills Preserve Plan goals to provide through-access for bikes. Project presents an opportunity to partner with CalTrans and Santa Clara County.
AA21- Bear Creek Redwoods: <i>Public Recreation and Interpretive Projects</i>	Phase II Trails: Public Loop Trail to the Stables	Provide a new and improved trail connection to the Stables in the northeastern Preserve that remedies existing erosion/maintenance issues and enhances the visitor experience.
AA21- Bear Creek Redwoods: <i>Public Recreation and Interpretive Projects</i>	Phase II Trails: Briggs Creek Trail	Address erosion/maintenance issues on heavily-used trail north of stables and improve stream crossings to allow year-round patrol use.
AA21- Bear Creek Redwoods: <i>Public Recreation and Interpretive Projects</i>	Phase II Trails: Alma College Loop Trail	Improve existing roads flanking ridgeline to reduce erosion and provide year-round patrol access from the Alma parking lot to the eastern Preserve.
AA21- Bear Creek Redwoods: <i>Public Recreation and Interpretive Projects</i>	Bear Creek Stables Repairs	Implement site repairs at Bear Creek Stables to enhance public safety, improve site drainage, and extend life of existing structures. Confirm long-term water needs and implement water infrastructure improvements.
AA22- Sierra Azul: Cathedral Oaks Public Access and Conservation Projects	Wildlife Crossing Improvements on Alma Bridge Rd	Work with partners to design and construct wildlife crossing structures to reduce road mortality impacts and protect migrating newts traveling across Alma Bridge Road to access Lexington Reservoir for breeding.
AA22- Sierra Azul: <i>Cathedral Oaks Public Access and Conservation Projects</i>	Pursue Land Conservation Opportunities	Pursue purchase of lands with prior option rights (fee and easement).
AA24- Sierra Azul: <i>Rancho de Guadalupe Family Recreation</i>	Pursue Land Conservation Opportunities	Pursue purchase of lands with prior option rights (fee and easement).

MAA Optional Projects List FY2023-24 through FY2027-28

MAA Portfolio No.	Project Name	Project Description
AA02- Regional: <i>Bayfront Habitat Protection and Public Access partnerships</i>	Pursue Land Conservation Opportunities	Pursue partnership opportunities to preserve additional bayfront open space. (Requested by Director Kishimoto)
AA03- Purisima Creek Redwoods: <i>Purisima-to-Sea Trail, Watershed Protection and Conservation Grazing</i>	Fish Passage / Barrier Removal (Lobitos)	Develop and implement fish passage improvement design plans to remove barriers to steelhead migration at Verde Road (San Mateo County) and Highway 1 (Caltrans) culverts.
AA04- El Corte de Madera Creek: <i>Bike Trail and Water Quality Projects</i>	Single use biking/hiking trails.	Explore a potential revision to District policies to allow single use, bike only trails. If change is approved, proceed with planning and implementation of single use bike and hiking trails.
AA06- Windy Hill: <i>Trail Improvements, Preservation and Hawthorns Area Historic Partnership</i>	Hawthorns Historic Area	Evaluate partnerships, develop plan for historic area, implement Board direction on structure retention and potential repairs or improvements.
AA07- La Honda Creek: <i>Driscoll Ranch Public Access, Endangered Wildlife Protection and Conservation Grazing</i>	Staging Area and Trail Connections for Event Center and Apple Orchard Property	Explore, and if feasible, implement a new staging area with equestrian parking and trail connections to further Master Plan goals for public access. New staging area would formalize a second general parking area for the lower area of the preserve that accommodates horse trailers. Planned trail connections from the Event Center would connect to the new Harrington Creek Trail in Lower La Honda Creek.

MAA Optional Projects List FY2023-24 through FY2027-28

MAA Portfolio No.	Project Name	Project Description
AA08- La Honda Creek/Russian Ridge: Preservation of Upper San Gregorio Watershed & Ridge Trail Completion	Pursue Land Conservation Opportunities	Seek or respond to general land conservation acquisition or partnership opportunities to complete Bay Area Ridge Trail multiuse connections and gaps.
AA11- Rancho San Antonio: Interpretive Improvements, Refurbishing, and Transit Solutions	Rancho San Antonio Welcome Center	Plan, conduct CEQA review, secure permits, and construct a public welcome center (one option: an open-air "plaza").
AA12- Peninsula/South Bay Cities: <i>Partner to Complete Middle Stevens Creek Trail</i>	Stream Corridor Restoration	Support work by partners to complete stream corridor restoration and steelhead habitat enhancement in areas below the Stevens Creek dam.
AA13- Cloverdale: <i>Wildlife Protection, Grazing, and Trail Connections</i>	Natural Resource Restoration, Grazing Infrastructure Improvements and Minor Public Access Improvements	Contingent on acquisition of Cloverdale property, implement critical natural resource restoration improvements, conservation grazing infrastructure improvements, and install District signage and ADA improvements for existing access trail.
AA14- Regional: <i>Trail Connections and Campgrounds</i>	Pursue Land Conservation Opportunities	Seek or respond to general land conservation acquisition or partnership opportunities to connect Russian Ridge and Skyline to nearby protected public lands.

MAA Optional Projects List FY2023-24 through FY2027-28

MAA Portfolio No.	Project Name	Project Description
AA15- Regional: <i>Redwood Protection and Salmon Fishery Conservation</i>	Pursue Land Conservation	Seek or respond to general land conservation acquisition or partnership opportunities to protect redwood and fisheries habitat.
AA16- Long Ridge: Trail, Conservation and Habitat Restoration Projects (Saratoga)	Jikoji Pond Area Habitat Enhancement	Reroute public bicycle trail away from Jikoji Pond to better protect San Francisco garter snake habitat.
AA17- Regional: <i>Complete Upper Stevens Creek Trail</i>	Upper Stevens Creek Trail	Partner with Santa Clara County Parks to design and construct a new multi-use trail connecting Picchetti Ranch and Montebello Preserves with Upper Stevens Creek County Park, benefitting a wide range of user groups across the region.
AA22- Sierra Azul: <i>Cathedral Oaks Public Access and Conservation Projects</i>	Parking Area at Beatty property (Santa Clara County agreement)	Plan, design and construct a new parking area and trail connections to Priest Rock Trail in Lexington Reservoir County Park and Sierra Azul Preserve to fulfill a legal commitment with Santa Clara County. Also fulfills Vision Plan #22 goal for public access within the Cathedral Oaks Area of Sierra Azul. New trail would eventually connect to the Highway 17 Regional Trail Crossing.