



Midpeninsula Regional
Open Space District

LEGISLATIVE, FUNDING AND PUBLIC AFFAIRS COMMITTEE

R-16-11

February 9, 2016

AGENDA ITEM 4

AGENDA ITEM

Preview of Preserve Structure Inventory Project

GENERAL MANAGER'S RECOMMENDATION

Receive a presentation from the Volunteer Program Manager to review the GIS-based Preserve Structure Inventory Project, which identifies the following items found in the preserves: memorial and honorary benches, trails, plaques, and other named sites, and unmarked benches, bridges, and other hardscape items.

SUMMARY

The District has received a number of memorial and honorary bench requests from the public. Most of those requests do not meet the criteria set forth in the Board-adopted Site Naming Policy, which limits eligibility to those who have made a significant contribution to the District. The Legislative, Funding, and Public Affairs Committee asked the Public Affairs Department to look at alternative facilities and hardscape features for potential dedication that are not benches to better address the rise in dedication requests. The results of a Preserve Structures Inventory project will be provided using an interactive mapping program to show the locations of names and unnamed structures to explore whether these other structures should be included as part of the Site Naming Policy and memorial dedication program.

DISCUSSION

In 2014, the Legislative Funding and Public Affairs Committee (LFPAC) asked the Public Affairs Department to research opportunities, other than benches, for the public to honor individuals that did not meet the District's eligibility requirements as specified in the Site Naming Policy. An example given by a Committee member was a plaque put on a bridge or picnic table as was seen on a recent out-of-state park tour. The Committee requested staff to look at other options given the number of public requests received asking to honor or memorialize family members who enjoyed the Midpeninsula Regional Open Space Preserves. Most of those requests did not meet the eligibility requirement as set forth in the Policy (i.e. a named individual must have made a significant contribution to the District through its founding or volunteer work). The District currently does not have any other options for these requestors, and the Committee wanted to explore potential alternatives using existing preserve structures and other hardscape. Most of the requestors had a very specific preserve that they identified as being especially significant, and were only interested in that preserve.

The first step for the Public Affairs Department was to identify the current inventory of named and dedicated structures and hardscape as well as all unnamed benches and other structures such as sign boards, bridges, fences, etc.. Volunteer Claudia Newbold, who had just completed a

similar project for Peninsula Open Space Trust, offered to do the same for the District. Over the course of 18 months, under the direction of Volunteer Program Manager Paul McKowan, Ms. Newbold and a team of volunteers scouted 17 preserves cataloguing, photographing, and adding GPS coordinates for 177 structures. The District's GIS Team plotted all of the detailed information into its web mapping program.

In addition, Ms. Newbold, with some help from staff and fellow volunteer Tom Scannell, researched the history of all of the named locations. As the result of this work, the District now has a thorough interactive map and inventory, which will help in identifying new memorial bench locations. Of equal significance is that we now have an archive of historical information that did not formally exist. An example, as displayed in Attachment 1, is historical background for the named Hatch Trail at Purisima Creek Redwoods Open Space Preserve, which was named for Rufus Harvey Hatch who operated a saw mill in Purisima Canyon. Ms. Newbold has summarized this historic information and our GIS Team incorporated it into the mapping program. This information can also be used on interpretive walks and talks about the District.

FISCAL IMPACT

No fiscal impact at this time. However, should LFPAC consider expanding the memorial dedication program to include facilities and structures other than benches, the associated costs would be assessed at that time.

PUBLIC NOTICE

Public notice was provided as required by the Brown Act.

CEQA COMPLIANCE

This item is not a project subject to the California Environmental Quality Act.

NEXT STEPS

GIS mapping of the structure inventory is near completion and the final historic summary pages are being added. Public Affairs will be able to quickly provide direction on existing benches that can be named in honor or memory of those individuals who meet Policy requirements. In addition, Public Affairs will be bringing to the Committee at the end of 2016 suggestions on other naming opportunities. The Committee may also want to formalize, at a future date, a process for retaining our historic archives, which could include funding for a position, contractor, etc., to collect and organize the information and possibly identify a dedicated location within an administrative area to house the District's historic material with the option for public viewing.

Attachment:

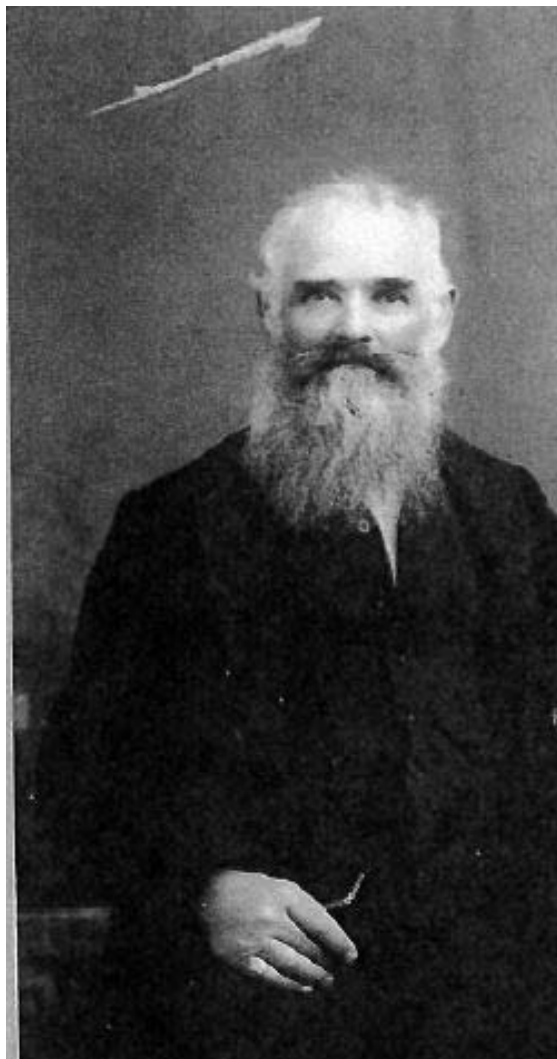
1. Historic Page for Rufus Hatch
2. Policy for Site Naming, Gift and Special Recognition

Responsible Department Head:

Shelly Lewis, Public Affairs Manager

Prepared by:

Shelly Lewis, Public Affairs Manager



trees.

Rufus Harvey Hatch

1829–1906

Connection to Preserve/MROSD:

- Operated a water-powered saw mill, later converted to a steam-powered mill, in Purisima Canyon.
- Mill partner was George Borden.
- Rufus Hatch and son Alvin operated coastside mills from 1855 to 1920.

Accomplishments/Recognition:

- The Borden and Hatch families operated or controlled most of the Purisima Canyon mills.
- The Borden Hatch mill provided five million feet of lumber to the Spring Valley Water Company to build a 9-mile flume from Frenchman Creek to join an existing flume from Stone Dam under Cahill Ridge.

Interesting/unique fact:

- Workers blasted too-large logs into pieces with dynamite.
- The Donkey Engine was introduced in the 1880s, allowing faster and less expensive removal of

Sources: 1) "Sawmills in the Redwoods: Logging on the San Francisco Peninsula 1849-1967" by Frank M. Stanger. 2) The Country Almanac, February 6, 1991, "When Kings Mountain was the local wild west" by Marion Softky. 3) La Peninsula, November 1990. 4) Interview of Alvin Hatch by Bob Lynne in 1966. 5) "Purisima: The Ghost Town of San Mateo County", student manuscript by Blair Hyde, 1939. 6) Internment document from Independent Order of Odd Fellows Cemetery, Half Moon Bay.

Board Policy Manual

Site Naming, Gift, and Special Recognition	Policy 5.01 Chapter 5 – Historical/Cultural
Effective Date: 8/25/93	Revised Date: 11/13/13
Prior Versions: 8/25/93, 9/14/94, 6/24/98, 9/12/01, 10/8/08, 1/13/10, 10/27/10	

I. SITE NAMING

All District site names and signs should be kept as simple and functional as possible. When a property is acquired, either as an addition to an existing preserve or for the establishment of a new preserve, a name will be recommended in the Preliminary Use and Management Plan. In most cases, "open space preserve" is appropriate as part of the name; however, there may be circumstances when another designation may be used. In some cases, a temporary name may be retained until the next Comprehensive Use and Management Plan review.

A. Open Space Preserves

The name given to each open space preserve should be general enough to remain suitable if the site is enlarged, but specific enough to give its location some significance. Properties added to an open space preserve may not always be contiguous with that preserve.

1. Preserves shall be named after:

- a) Geographical features of broad, general significance to the preserve;
- b) Historical persons, cultural names, uses, or events broadly associated with the locale.

2. Preserves shall not be named after any individuals other than historical persons as noted above.

B. Preserve Areas, Trails, Site Improvements, Historic Sites and Unnamed Natural Features

This designation refers to specific locations, land formations, trails, natural and physical features, staging areas and other site improvements, and areas of significance within open space preserves. Recognition of significant land gifts, including "bargain" purchases, will be negotiated at the time of the gift or bargain purchase.

1. Preserve areas, trails, site improvements including benches and bridges, historic sites and previously unnamed natural features shall ordinarily be named after:

- a) Geographical, botanical or zoological identification;

b) Historical persons, uses, or events associated with the site, or persons and organizations listed in Section III: "Special Recognition".

2. Preserve areas, trails, site improvements, historic sites and unnamed natural features may in rare instances be named after a living individual who has made an outstanding contribution to the District, subject to approval by the Board of Directors.

II. GIFT RECOGNITION

The purpose of the gift recognition policy is to provide an opportunity for the District to recognize and commend individuals or groups that have made significant contributions of cash, equipment, materials, goods or professional services toward the enhancement of the District, its programs, and its facilities.

A. Unsolicited Cash Gifts:

Up to \$25	Postcard of thanks
\$26 to \$499	Letter signed by General Manager
\$500 to \$1,999	Letter signed by President of the Board
\$2,000 to \$4,999	Letter signed by President of the Board and District gift item (note cards, etc.)
\$5,000 to \$9,999	Letter signed by President of the Board and framed photograph of favorite District preserve
\$10,000 or more	Letter signed by President of the Board and Resolution and framed photograph of District preserve and mention in a District publication*
*These items will be provided only if desired by the donor.	

III. SPECIAL RECOGNITION

The Legislative, Funding and Public Affairs Committee (LFPAC) shall be the committee designated to discuss all requests that meet the criteria of the policy for special recognition, made by members of the Board of Directors or by members of the public, including bench memorials and the naming of bridges, and after deliberation shall decide which requests will be referred to the full Board for a vote.

The District places benches in its preserves for three distinct purposes:

A. District Rest Benches

These benches provide constituents with a place to rest. District staff places these benches without involving a District committee or the full Board. Regular benches must be either a backed or a backless standard bench as described in Section V below.

B. Constituent Memorial Benches

These are benches which have been requested by constituents in order to honor a member of the public and are funded by the requestors who must pay \$5,000 for the lifetime cost of the bench. LFPAC discusses requests for these benches and decides which requests will be referred to the full Board for a vote. Requests must be in reference to a deceased significant supporter or a volunteer, as defined in the following sections.

a) Constituent memorial benches shall only be placed in locations that have been pre-determined by the District and approved by the Use and Management committee and by the full Board of Directors.

b) If a request for special recognition is approved by the Board of Directors, the requestor(s) shall pay for the cost of constructing, installing and maintaining a memorial bench by contributing \$5,000 to a Memorial Bench Fund to cover the lifetime cost of the bench. The District will put this fund into an interest-bearing account which will be used solely for memorial bench construction, installation, repair, and maintenance.

c) Bench plaques will be 2 x 6 inches in size.

d) Benches must be one of the two District standard bench designs.

C. District Memorial Benches

These are benches which are installed by the District in response to requests by members of the Board of Directors to honor deceased "Founders," "Significant Supporters", and "Volunteers".

a) LFPAC can initiate a bench request and refer a decision to the full Board or individual Board members can initiate a bench request which will be referred to LFPAC for discussion before it is referred to the full Board for a final decision. Honorees must be deceased "Founders", "Significant Supporters", and "Volunteers" (per policy Section III D below).

b) For these benches there are no design specification limits or limits on their location. The District will pay for the lifetime cost of the bench.

D. Deceased Founders, Significant Supporters, and Volunteers

"Founders", "Significant Supporters", and "Volunteers" are eligible for special recognition, including memorials.

"Founders" shall be defined as an individual or group of individuals who participated in the formation of the District, or were significant supporters of the formation of the District.

"Significant Supporters" shall be defined as individuals or group of individuals who have shown conspicuous or noteworthy support for the District through extraordinary contributions of time and effort to the advancement of the goals, philosophy and mission of the District.

"Volunteers" shall be defined as individuals or groups of individuals who donated their time to the District by working for the District's docent or volunteer program.

IV. RECOGNITION OF HISTORIC SITES

A. A recognition monument, normally in plaque form, may be considered by the Board if it is in relation to a specific existing building or other remaining structure of significant historic value. In such cases, the plaque will be affixed or in close proximity to the structure itself. If there is no structure, then recognition may be considered for inclusion on District informational materials or trail signage. Such a site, in the absence of a building or structure, will ordinarily not be physically marked except as determined by the Board on a case-by-case basis as part of the Use and Management planning process for the corresponding open space preserve.

Any Board-approved memorial names shall be included in site brochures, maps, or other informational materials.

V. STANDARD BENCH DESIGN SPECIFICATION

A. District Rest Benches and Constituent Memorial benches, described in III(A) and (B) above, are limited to either of the two following standard bench designs:

Backed bench:

Dumor - Bench 88, recycled plastic slates (color: CEDAR), steel leg supports
(color: BLACK, IMBEDDED)
6' or 8' lengths

Backless bench:

Dumor - Bench 103, recycled plastic slates (color: CEDAR), steel leg supports
(color: BLACK, IMBEDDED)
103-60PL 6' long, 3 supports
103-80PL 8' long, 3 supports

B. LFPAC can at any point bring designs to the Board that differ from the District's standard bench designs.