



Midpeninsula Regional  
Open Space District

R-16-148  
Meeting 16-28  
November 9, 2016

## AGENDA ITEM 5

### AGENDA ITEM

Proposed Expansion of Dogs On-Leash Access on All Trails at El Sereno Open Space Preserve

### GENERAL MANAGER'S RECOMMENDATIONS

1. Approve the proposed project description for the El Sereno Dog Access Project, as set out in this report, to proceed with the required environmental review in accordance with the California Environmental Quality Act.
2. Approve the above project description for a future Use and Management Plan Amendment for El Sereno Open Space Preserve, excluding trail segment over San Jose Water Company Property, pending formalized access rights.

### SUMMARY

The El Sereno Dog Access Project (Project) proposes to expand dog on-leash access to all trails at El Sereno Open Space Preserve (Preserve). This Project is included in the Board-approved 2012 Vision Plan, 2014 Measure AA Five-Year Project List, and Fiscal Year (FY) 2016-17 Action Plan. Following extensive property research, the District initiated outreach to affected private landowners and held a neighborhood meeting on August 30, 2016 to obtain input on the proposed Project. The Project was then presented to the Planning and Natural Resources Committee (PNR) in October 2016. The PNR recommends proceeding with the Project, starting with Board approval of the proposed project description to begin the environmental review (CEQA) process. For the purposes of CEQA analysis, dog access on a 0.3-mile portion of the Aquinas Trail over San Jose Water Company (SJWC) property will be included. However, it should be noted that the District has not established public access across those lands has not been established, and access would be subject to formal access rights being secured with SJWC. Once the CEQA analysis is completed, the item will return to the Board of Directors for consideration of a Use and Management Plan Amendment to include dogs-on-leash on all Preserve trails except for the SJWC trail segment should access rights not be secured by that time. The Fiscal Year (FY) 2016-17 budget includes sufficient funds for the Project.

### MEASURE AA

Costs associated with changing the use of existing trails is not MAA eligible. However, future acquisitions or trail upgrades to improve access and perfect rights are eligible as part of MAA Portfolio #19—*El Sereno Dog Trails and Connections*.

## **BACKGROUND**

Starting in late 2015, the District conducted a site opportunities and constraints analysis for dog access at the Preserve and reviewed Board ordinances and policies, including the Board-adopted Dog Access Site Evaluation Criteria that guide site suitability analysis of dog access on District lands. Concurrently, the District began due diligence exploration into the status of property rights to formalize public access and expand dog access over the entire Preserve trail system, including through-connections. In 2016, after the Board approved the Project as part of the FY2016-17 Action Plan, the District initiated outreach to affected private landowners to receive input on the proposed use change and the need to formalize public access rights along commonly used trailheads and trails that extend through their properties. As of September 30, 2016, four of the five landowners who own segments of the trail system responded, and the District is working on formalizing access. Following landowner outreach, the District held a broader neighborhood meeting on August 30, 2016 and obtained input on the proposed use change.

Currently, dog on-leash access is limited to the 1.2-mile Overlook Trail (see Attachment 1) on the northeast side of the Preserve. This trail had a long history of dog use that far preceded the District's purchase of the underlying 258-acre former Krone-Bishop property. Given this history and the resulting evaluation of the trail against the Board-approved Dog Access Site Evaluation Criteria, the Preserve's Use and Management Plan was amended in 2008 to formalize dog access on the Overlook Trail (R-08-36). Expanding dog access to the remaining Preserve trails was identified as a priority during the Vision Plan process and included in Measure AA.

## **DISCUSSION**

### **Existing Site Constraints and Opportunities**

The Preserve primarily provides recreational opportunities to adjacent neighborhoods due to severely limited parking. Two public parking areas service the Preserve; one is a small, three-vehicle pullout on Montevina Road and the other a six-vehicle, permit parking lot on Overlook Drive at the west end of the Overlook Trail. In 2015, 38 cars used the permit parking lot over the entire year. Trailhead entrances at Bohlman Road, Sheldon Road and Overlook Road, at the east end of the Overlook Trail, do not have public parking. Due to the steepness of the terrain and surrounding residential development, providing additional parking is not feasible at these locations.

The Preserve trail system mostly passes through low sensitivity chaparral habitat and a small oak woodland area with steep slopes. Chaparral communities are considered quite suitable for dog access because the dense brush keeps dogs within the trail corridor thus minimizing ecosystem impacts. The Preserve trail system is a network of wide fire roads that have good visibility and substantial space for different types of users to share the same trails. The physical characteristics of the Preserve strongly contribute to its suitability for dog access.

### **Dog Access Site Evaluation Criteria**

District staff evaluated the Preserve using 11 criteria set forth in the 1995 Board-approved Dog Access Site Evaluation Criteria. The evaluation criteria make clear that the policy objective is to designate an entire preserve as either open or closed to dogs to facilitate management and proper

signage, and avoid visitor confusion. The table in Attachment 2 provides a summary and an analysis of the evaluation criteria as applied to the Preserve. The most important criterion as determined by the Board is habitat sensitivity. The Preserve's chaparral habitat is considered one of the least sensitive and thus quite suitable for dogs. In summary, the Preserve scores well among the site criteria evaluation and is comparable to other District preserves that allow dog access.

### **Proposed CEQA Project Description**

To consider a proposed Use and Management Plan Amendment to the Preserve to add dog use to existing Preserve trails, the District must complete an environmental review analysis of the proposed Project in accordance to the California Environmental Quality Act. For the purpose of the environmental review, the District proposes to analyze the following: a trail use change to allow dog access on 5.9 miles of trail over four (4) existing trail segments: Montevina Ridge, Aquinas, Loma Vista and Serenity Trails. The District would not implement dog access over the approximately 0.3-mile portion of the Aquinas Trail on SJWC property, until and if public access rights are formalized on this segment. If this Project Description is approved by the Board, the District would complete the environmental review and return at a later date with the proposed Use and Management Plan Amendment and CEQA findings for Board consideration.

### **Summary of Public Input Received to Date**

District staff presented the proposed Project at a neighborhood meeting on August 30, 2016 for residents living within the immediate vicinity of the Preserve. While these neighbors expressed overall support for expanding dog access, some shared concerns related to:

- Existing parking issues on private roads (Sheldon Road and Overlook Road) and how expanded dog access trails may further impact parking;
- Improved signage to educate visitors about cleaning up after their dogs, not disturbing adjacent homes, and respecting privacy of these residents;
- Additional District ranger patrol and enforcement;
- Feasibility of working more closely with the Sheriff's Office on patrol and enforcement of illegal parking on private roads; and
- Feasibility of additional parking area(s) within the Preserve.

Following the August 30 neighborhood meeting, the District scheduled a September 22 meeting specifically with the Sheldon Road residents to further discuss their concerns regarding unauthorized parking on the private road, which is a separate issue from the proposed dog expansion at the Preserve. Neighbors and the District agreed to several actions to address the concerns, including the installation of larger and additional signs by the District and ranger enforcement of "No Parking" at the end of Sheldon Road.

The proposed Project was then presented to the PNR Committee on October 6, 2016. The Committee asked clarifying questions, but made no changes to the proposal and recommended forwarding the Project to the full Board for consideration (see attached draft minutes). Members of the public provided comment, including support for expanded dog access.

**FISCAL IMPACT**

The Fiscal Year 2016-17 budget includes \$51,750 (OpEx-GF) for the Project. Any land acquisition costs to further improve access and perfect rights would need additional funding approval from the Board

**BOARD COMMITTEE REVIEW**

The PNR Committee met on October 6, 2016. (see attached draft minutes), asked clarifying questions, and heard public comments that included support for expanded dog access. The PNR Committee recommended forwarding the Project to the full Board.

**PUBLIC NOTICE**

Public notice was provided as required by the Brown Act. Public notice was also sent to adjacent landowners and interested parties, including attendees from the August 30, 2016 Los Gatos neighborhood meeting. Public noticing was also posted on the District's webpage and the El Sereno Dog Access Project webpage.

**CEQA COMPLIANCE**

If this item is approved by the Board, the District will commence environmental review.

**NEXT STEPS**

Following Board approval, the General Manager would direct staff to begin CEQA review.

## Attachments

1. Map of El Sereno showing proposed expanded dog access trails.
2. Table of El Sereno Dog Access evaluation criteria
3. Public correspondence
4. Draft minutes

## Responsible Department Head:

Jane Mark, AICP, Planning Department

## Prepared by:

Tina Hugg, Senior Planner, Planning Department  
Alicia Halpern, Planner I, Planning Department

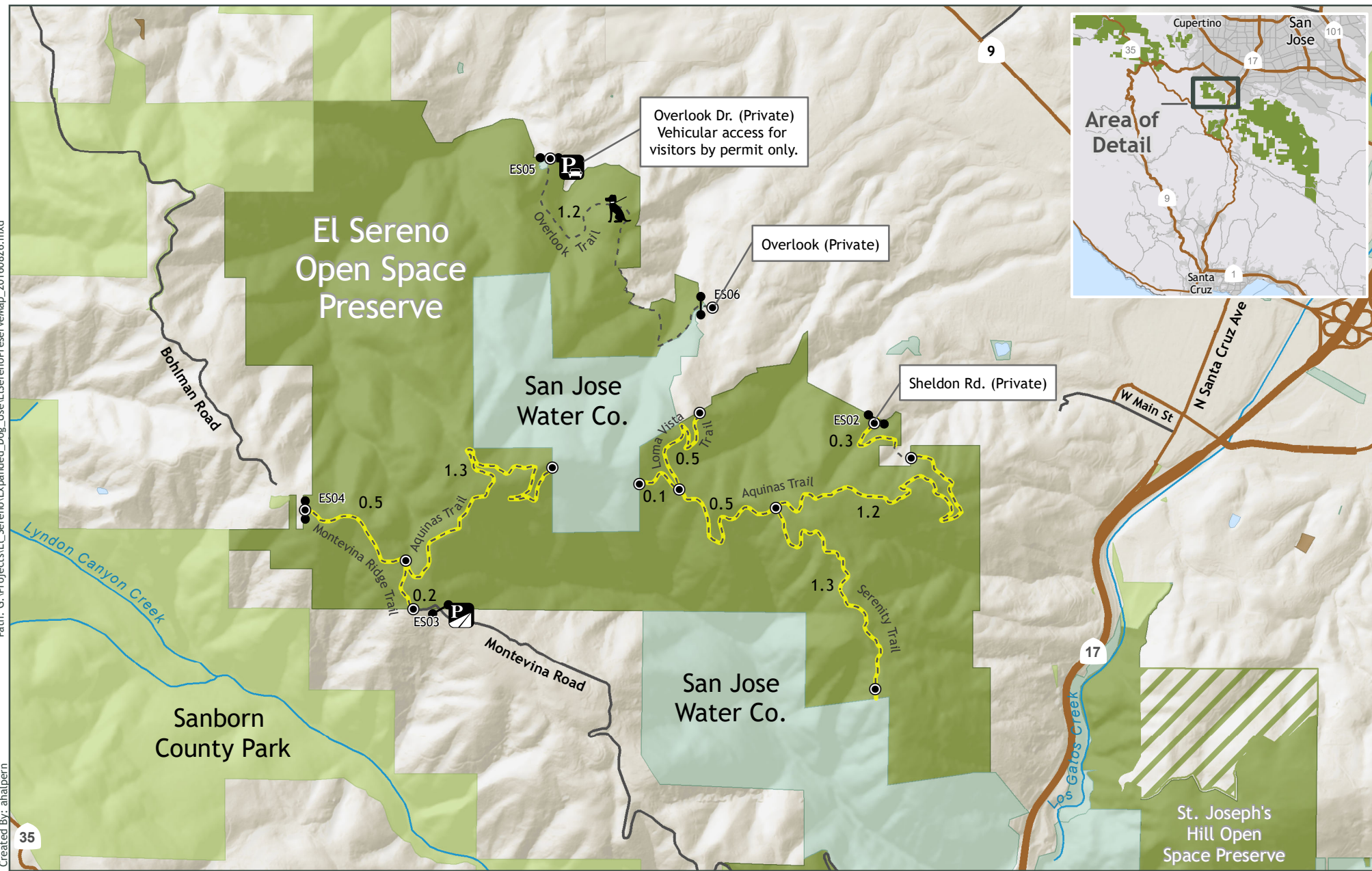
## Contact person:

Tina Hugg, Senior Planner, Planning Department  
Alicia Halpern, Planner I, Planning Department

## Graphics prepared by:

Ryan Haines, GIS Intern

Path: G:\Projects\EL\_Sereno\Expanded\_Dog\_Use\ElSerenoPreserveMap\_20160826.mxd  
Created By: ahalbern



### El Sereno Open Space Preserve (OSP)

MidpenPreserves	Trail	Gate (#)	Dogs on Leash Allowed
Other Protected Open Space or Park Lands	Proposed Expanded Dog Access Trails	Trail Junction (# Trail Mileage)	Midpen Conservation Easement
San Jose Water Company	Important Road	Roadside Parking	<p>Midpeninsula Regional Open Space District (Midpen)</p> <p>August 2016</p> <p>Miles  0 0.25 0.5</p>
Private Property	Freeway	Parking Lot	

While the District strives to use the best available digital data, this data does not represent a legal survey and is merely a graphic illustration of geographic features.

**Evaluation Results for El Sereno Open Space Preserve Using Board-adopted  
Dog Access Site Evaluation Criteria**

Criterion	Supports Dog Access	Notes
<b>Habitat sensitivity</b>	<b>Yes</b>	Chaparral; Low sensitivity
<b>Preserve use levels</b>	Yes	Low
<b>Trail-width/visibility</b>	Yes	Wide fire roads
<b>Parking</b>	No	Very limited
<b>Conflicting special use</b>	Yes	No special use zone
<b>History of dog use</b>	No	Not previously sanctioned
<b>Adjacent to Urban Area</b>	Yes	Limited
Miles of trails	Yes	7.1 miles
Disturbed habitat	Yes	Agricultural use
Dogs allowed on connecting trails	N/A	No regional trail connections
Loop trails	No	No loop trails

**High Importance Criteria:**

- Habitat Sensitivity: The Preserve's chaparral habitat is considered one of the least sensitive and thus quite suitable for dogs.

**Medium Importance Criteria:**

- Use levels: The Preserve experiences low use compared to other District preserves and hence is suitable for adding an additional use.
- Trail-width/visibility: The Preserve has wide, road-width trails that help reduce the opportunity for visitor conflict.
- Parking: Parking is limited and thus not ideal for *regional* dog access.

- Conflicting special use: No conflicting special use exists, such as an environmental education site or agricultural use, that might be negatively affected by dog access.
- History of dog use: The Preserve has a history of informal, unsanctioned dog use.
- Adjacent to urban area: The Preserve lies on the edge of a lower density residential neighborhood and will provide these neighborhoods with increased healthy recreational opportunities.

**Lower Importance Criteria:**

- Miles of trail: Preserves with five or more miles of trail score highest because they offer more recreational opportunities for visitors, and El Sereno has 5.9 miles of trails that could be opened to dogs.
- Disturbed habitat: This score reflects the relative amount of disturbance from past use and the Preserve has a history of agricultural use for grazing.
- Dogs allowed on connecting trails: The existence of dog use on connecting trails is scored higher and currently there are no regional trails that connect into the Preserve, thus this criterion is not applicable. However, if a future trail connection were ever developed to connect El Sereno Open Space Preserve and Sanborn County Park, where dogs are allowed in the County park, expanding dog access at the Preserve would be compatible with dog access on connecting trails.
- Loop trails: Offering more loop trails is a specific request from dog user groups, so preserves with loop trails rate higher. At this time, the Preserve only offers out-and-back trails.

**Public correspondence received prior  
to October 3, 2016**



## Alicia Halpern

---

**From:** Alicia Halpern  
**Sent:** Friday, September 16, 2016 3:30 PM  
**To:** 'Deb Conway'  
**Subject:** RE: dogs

Dear Ms. Conway:

Thank you for your email. Your comments will be shared with our Planning and Natural Resources (PNR) Committee when they meet to discuss this project at a future date still to be determined. I will add your email address to the El Sereno Dog Access contact list and you will receive a notification for this upcoming PNR Committee meeting when a date and location have been set. Feel free to attend the meeting and provide additional comments in-person.

Please let me know if you have any additional comments or questions.

Sincerely,  
Alicia



Alicia Halpern  
Open Space Planner I  
[ahalpern@openspace.org](mailto:ahalpern@openspace.org)  
Midpeninsula Regional Open Space District  
330 Distel Circle, Los Altos, CA 94022  
P: (650) 691-1200 - F: (650) 691-0485

---

**From:** Deb Conway [mailto: [REDACTED] ]  
**Sent:** Thursday, September 15, 2016 11:39 AM  
**To:** El Sereno Dog Access <ElSerenoDogs@openspace.org>  
**Subject:** dogs

Concerning dogs in El Sereno Open Space-  
I live at the end of Bohlman Road.

Although it's great having people enjoy the Open Space, having dogs wandering around with them is an annoyance.

This seems to be one of the last serene places you can walk without dog mess, or dogs.

People have no concern for keeping their dogs on leash. Who will police that? Our own dogs are to be kept fenced, yet people who come to use the trails let their dogs roam freely. We even have a couple locals that deny the leash law and take their dogs into the Open Space off leash anyway.

Most of land up here is private land, yet people feel the urge to wander around outside the boundaries of the Open Space anyway. Don't we have enough trails that allows dogs now without creating another in such a serene location?

Not to mention the trash people leave behind. I pick up trash along Bohlman all the time as it is. What about dog droppings. If people don't care about leashing.. why will they be compelled to pick up their own dog's messes?

Please reconsider allowing dogs on one of the last pristine trails around..  
Deb Conway

## Alicia Halpern

---

**From:** Alicia Halpern  
**Sent:** Tuesday, August 30, 2016 9:48 AM  
**To:** 'Bianca Gruetter'  
**Cc:** Annie Johnson; Bill Trambley; Sue Cooney; Candice Pacheco; Karyn Gramling; Marcia Miller; Joseph Wolff  
**Subject:** RE: Sheldon Road Response for Dogs on El Sereo Open Space

Good morning,

Thank you for your input. Your comments were circulated to the project team.

Sincerely,  
Alicia



Alicia Halpern  
Open Space Planner I  
[ahalpern@openspace.org](mailto:ahalpern@openspace.org)  
Midpeninsula Regional Open Space District  
330 Distel Circle, Los Altos, CA 94022  
P: (650) 691-1200 - F: (650) 691-0485

---

**From:** Bianca Gruetter [mailto: [REDACTED]]  
**Sent:** Wednesday, August 24, 2016 3:33 PM  
**To:** Alicia Halpern <[ahalpern@openspace.org](mailto:ahalpern@openspace.org)>  
**Cc:** Bianca Gruetter < [REDACTED] >; Annie Johnson < [REDACTED] >; Bill Trambley < [REDACTED] >; Sue Cooney < [REDACTED] >; Candice Pacheco < [REDACTED] >; Karyn Gramling < [REDACTED] >; Marcia Miller < [REDACTED] >; Joseph Wolff < [REDACTED] >  
**Subject:** Sheldon Road Response for Dogs on El Sereo Open Space

Good afternoon and thank you for the clarification. Can you please share the below information with the appropriate people prior to the meeting on Tuesday?

Please note that the below request does not in any way signal a desire to allow or not allow dogs on the preserve.

However, in the event that Mid Pen does move forward and allow dogs, the residents of Sheldon Road (which is a private road) would like to request the following:

1. It should be for a trial period of 6 months with a mandatory follow up meeting to review how it is impacted our neighborhood.
2. Mid pen has to pay for and install **LARGE** signs at the bottom to Sheldon and on the fire gate that says there is NO PARKING on Sheldon at anytime, trail hours of sunrise to sunset, NO off leash dogs and all dog waste must be removed. We would like to discuss the signage size and wording. Current signage for the preserve is ineffective.
3. Mid pen has to commit to patrolling the preserve daily with a zero tolerance policy for people with off-leash dogs and people leaving dog waste. In addition, Mid Pen will enforce the no parking on Sheldon Road.

Our concern is an increase in people driving on Sheldon looking for the dog trail and an increase in parking along Sheldon Road and the cul-du-sac.

Thank you from the residents of Sheldon Road

- Bianca and Jeff Gruetter
- Sue Cooney
- Jeff and Annie Johnson
- Bob Pacheco and Candice Brown
- Joe and Aron Wolfe
- Bill and Sue Trambley
- Karyn and Glenn Gramling
- Marcia and Eric Miller

On Aug 17, 2016, at 11:00 AM, Alicia Halpern <[ahalpern@openspace.org](mailto:ahalpern@openspace.org)> wrote:

Dear Bianca,

Thank you for your email. The proposal for this project is to open all the trails at El Sereno Open Space Preserve to dog access. This includes the Aquinas Trail, which is the trail right above your neighborhood.

Please let me know if you have any further questions.

Regards,  
Alicia

Alicia Halpern  
Open Space Planner I  
[ahalpern@openspace.org](mailto:ahalpern@openspace.org)  
Midpeninsula Regional Open Space District  
330 Distel Circle, Los Altos, CA 94022  
P: (650) 691-1200 - F: (650) 691-0485

-----Original Message-----

From: Bianca Gruetter [REDACTED]  
Sent: Monday, August 15, 2016 9:35 AM  
To: El Sereno Dog Access <[ElSerenoDogs@openspace.org](mailto:ElSerenoDogs@openspace.org)>  
Subject: El Sereno Dog Access

Good Morning.

I am a home owner on Sheldon Road in Los Gatos. Can you please confirm where the proposed El Sereno Dog access is? We are in receipt of the flyer from Mid Pen but it is unclear on the map where you are considering adding dog access. We own a home on Sheldon Road and are curious if the trail directly above our house is in consideration.

Thank you very much!

Bianca Gruetter  
16900 Sheldon Road  
Los Gatos, CA 95030  
[REDACTED]

## Alicia Halpern

---

**From:** Alicia Halpern  
**Sent:** Tuesday, August 30, 2016 10:14 AM  
**To:** 'Bianca Gruetter'  
**Subject:** RE: Sheldon Road Signage  
**Attachments:** Sheldon Rd License Agreement.pdf

Dear Ms. Gruetter,

For our initial notification, the District's goal was to send mailers to the owners of the properties on the roads directly leading to the project site as well as anyone who is on our interested parties list for that preserve. These roads included Bohlman, Montevina, Sheldon, and Overlook Roads. Initial mailings were sent based on residents' addresses that we obtained from the County parcel data for the properties. Very often we need to expand our interested parties mailing list as a project moves forward. This is the first of multiple opportunities in the planning process for the public to give input on the El Sereno Dog Access project.

I have attached a template of the Sheldon Road License Agreement that is referenced on the sign and was individually signed by sixteen property owners along Sheldon Road.

Sincerely,  
Alicia



Alicia Halpern  
Open Space Planner I  
[ahalpern@openspace.org](mailto:ahalpern@openspace.org)  
Midpeninsula Regional Open Space District  
330 Distel Circle, Los Altos, CA 94022  
P: (650) 691-1200 - F: (650) 691-0485

-----Original Message-----

From: Bianca Gruetter [mailto: ]  
Sent: Sunday, August 28, 2016 6:40 PM  
To: Alicia Halpern <[ahalpern@openspace.org](mailto:ahalpern@openspace.org)>  
Subject: Sheldon Road Signage

Good morning. In anticipation of the Tuesday evening meeting, can you please send me a copy of the Sheldon Road agreement as noted on the sign? In addition can you confirm how, when and to what extent the meeting is being advertised? Most residents on Sheldon are unaware of it.

Thank you

**From:** [Jennifer Woodworth](#)  
**Subject:** RE: El Sereno - PRA request  
**Date:** Friday, September 9, 2016 2:31:07 PM  
**Attachments:** [IMG\\_1215.jpg](#)  
[IMG\\_1217.JPG](#)  
[El Sereno Incidents 1-2013 to Present.pdf](#)  
[El Sereno Subject Cites 1-2013 to Present.pdf](#)  
[El Sereno Parking Cites & Warnings 1-2013 to Present.pdf](#)  
[image001.gif](#)

---

Ms. Gruetter,

Alicia Halpern forwarded to me your Public Records Act request. Please see the District's responses below and the attached documents. Please let me know if you have any additional questions. Thank you.

1. Can you please send me exhibit A which is the licensors?  
**Paperwork has been provided in person by Allen Ishibashi.**
2. Can you please tell me whom is the licensors representative (page 2, II)?  
**Paperwork has been provided in person by Allen Ishibashi.**
3. Per section VII can you send me the patrol and activity enforcement for the past 4 years? In particular I am looking for the frequency that there are patrols on both Sheldon and Mid Pen and **the number of tickets that have been issued to dog walkers on mid own.**  
**A report of incidents at El Sereno Open Space Preserve, including citations, is attached. There are also separate documents that list citations only and one for parking citations only. Patrol logs are not maintained electronically. Our Visitor Services department has approximately 5 bankers boxes of these logs for the past 4 years that you may review. Please let me know if you would like to review these, and we can arrange a time. Some of these logs contain personal information that will require redaction, so please contact me to set up an appointment.**
4. Is there any record of the number of complaint calls or requests for help for Sheldon Road residents from the last 10 years?  
**This information is not tracked.**
5. Based on section I, it appears as though this license is revocable. I would assume this would be based on non compliance of the agreement.  
**This information is contained in the license agreement previously provided.**
6. Lastly, please confirm the locations of the signs in section VI, part 2, 3, 4 and section IV?  
**Photos of the signs at the intersection of Overlook Rd. and Sheldon Rd. and the intersection of Sheldon Rd. and the District's trail are attached.**



**Jennifer Woodworth, MMC**  
District Clerk/ Assistant to the General Manager  
[jwoodworth@openspace.org](mailto:jwoodworth@openspace.org)  
Midpeninsula Regional Open Space District  
330 Distel Circle, Los Altos, CA 94022  
P: (650) 691-1200 - F: (650) 691-0485

E-mail correspondence with the Midpeninsula Regional Open Space District (and attachments, if any) may be subject to the California Public Records Act, and as such may therefore be subject to public disclosure unless otherwise exempt under the Act.

---

**From:** Bianca Gruetter [<mailto:> [REDACTED]]  
**Sent:** Tuesday, August 30, 2016 10:56 AM  
**To:** Alicia Halpern <[ahalpern@openspace.org](mailto:ahalpern@openspace.org)>  
**Subject:** Re: Sheldon Road Signage

Thank you for sending this. Can you please send me exhibit A which is the licensors? Can you please tell me whom is the licensors representative (page 2, II)? Per section VII can you send me the patrol and activity enforcement for the past 4 years? In particular I am looking for the frequency that there are patrols on both Sheldon and Mid Pen and the number of tickets that have been issued to dog walkers on mid own. Is there any record of the number of complaint calls or requests for help for Sheldon Road residents from the last 10 years? Based on section I, it appears as though this license is revocable. I would assume this would be based on non compliance of the agreement. Lastly, please confirm the locations of the signs in section VI, part 2, 3, 4 and section IV?

Thank you very much.

Bianca Gruetter  
Sent from my iPhone  
[REDACTED]

On Aug 30, 2016, at 10:14 AM, Alicia Halpern <[ahalpern@openspace.org](mailto:ahalpern@openspace.org)> wrote:

Dear Ms. Gruetter,

For our initial notification, the District's goal was to send mailers to the owners of the properties on the roads directly leading to the project site as well as anyone who is on our interested parties list for that preserve. These roads included Bohlman, Montevina, Sheldon, and Overlook Roads. Initial mailings were sent based on residents' addresses that we obtained from the County parcel data for the properties. Very often we need to expand our interested parties mailing list as a project moves forward. This is the first of multiple opportunities in the planning process for the public to give input on the El Sereno Dog Access project.



I have attached a template of the Sheldon Road License Agreement that is referenced on the sign and was individually signed by sixteen property owners along Sheldon Road.

Sincerely,  
Alicia

<image001.gif>

Alicia Halpern  
Open Space Planner I  
[ahalpern@openspace.org](mailto:ahalpern@openspace.org)  
Midpeninsula Regional Open Space District  
330 Distel Circle, Los Altos, CA 94022  
P: (650) 691-1200 - F: (650) 691-0485

-----Original Message-----

From: Bianca Gruetter [<mailto:> ]

Sent: Sunday, August 28, 2016 6:40 PM

To: Alicia Halpern <[ahalpern@openspace.org](mailto:ahalpern@openspace.org)>

Subject: Sheldon Road Signage

Good morning. In anticipation of the Tuesday evening meeting, can you please send me a copy of the Sheldon Road agreement as noted on the sign? In addition can you confirm how, when and to what extent the meeting is being advertised? Most residents on Sheldon are unaware of it.

Thank you

<Sheldon Rd License Agreement.pdf>

## PRIVATE ROAD

### Authorized Vehicles Only

- This is private property. Please be courteous to residents. Public access has been granted to trucks and tractors under the Shasta-Trinity Land Use Agreement.
- Signs and blueprints must stay on the roadside.
- The speed limit on Shasta Road is 35 MPH.
- Hours of access to Shasta Road are from 5:30 hour before sunrise to 1:30 hour after sunset.
- Questions regarding access to this road should be directed to District office: 531-691-6336

# PRIVATE ROAD

## Authorized Vehicles Only

- This is private property. Please be courteous to residents. Public access has been granted to hikers and bicyclists under the Sheldon Road License Agreement.
- Hikers and bicyclists must stay on the roadway.
- The speed limit on Sheldon Road is 15 MPH.
- Hours of access to Sheldon Road are from 1/2 hour before sunrise to 1/2 hour after sunset.
- Questions regarding access to this road should be directed to District offices: 650-691-1200

# SELECTED EVENTS by PRESERVE [Detail]

DATES BETWEEN 1/1/2013 And 9/7/2016  
 ALL EVENT TYPES, ALL CITES TYPES, ALL INCIDENT TYPES  
 PRESERVES: El Sereno  
 ALL TRAILS, ALL VIOLATIONS

Date	Report	Cite/IR #	Incident Type		Misdemeanor
<b>El Sereno</b>					<b>Count 64</b>
1/27/2013	INCIDENT IR REPORT	<b>IR# 13F032</b>	Law Enforcement		
1/27/2013	SUBJECT CITATION	<b>22506</b>		MROSD 701.1(b) Dog in prohibited area	<input type="checkbox"/>
3/12/2013	INCIDENT IR REPORT	<b>IR# 13F091</b>	Law Enforcement	<i>Uncited</i> MROSD 703.1 Unlawful defacement	<input checked="" type="checkbox"/>
3/16/2013	SUBJECT WARNING	<b>12395</b>		MROSD 701.1(b) Dog in prohibited area	<input type="checkbox"/>
4/13/2013	INCIDENT IR REPORT	<b>IR# 13F145</b>	Law Enforcement	<i>Uncited</i> MROSD 703.2 Unlawful construction	<input checked="" type="checkbox"/>
4/27/2013	SUBJECT CITATION	<b>22045</b>		MROSD 502.3(a) Helmet required	<input type="checkbox"/>
4/27/2013	INCIDENT IR REPORT	<b>IR# 13F163</b>	Law Enforcement		
5/4/2013	SUBJECT CITATION	<b>22522</b>		MROSD 701.1(b) Dog in prohibited area	<input type="checkbox"/>
5/4/2013	INCIDENT IR REPORT	<b>IR# 13F173</b>	Law Enforcement		
6/23/2013	ACCIDENT	<b>13F237</b>	Medical - Bicycle Accident		
1/2/2014	SUBJECT WARNING	<b>12934</b>		MROSD 701.1(b) Dog in prohibited area	<input type="checkbox"/>
1/2/2014	SUBJECT CITATION	<b>22383</b>		MROSD 701.1(b) Dog in prohibited area	<input type="checkbox"/>
1/2/2014	INCIDENT IR REPORT	<b>IR# 14F005</b>	Law Enforcement		
1/19/2014	PARKING WARNING	<b>12935</b>		MROSD 801.1(a) Prohibited Areas (Signed)	<input type="checkbox"/>
2/15/2014	SUBJECT WARNING	<b>13653</b>		MROSD 701.1(b) Dog in prohibited area	<input type="checkbox"/>
2/16/2014	SUBJECT CITATION	<b>21001</b>		MROSD 701.1(b) Dog in prohibited area	<input type="checkbox"/>
2/16/2014	INCIDENT IR REPORT	<b>IR# 14F054</b>	Law Enforcement		
3/9/2014	PARKING CITATION	<b>SCC16939</b>		SCC B14-33.2(a)3 Parking blocking road or driveway	<input type="checkbox"/>
3/18/2014	SUBJECT WARNING	<b>12470</b>		MROSD 701.1(c) Leash required - Dog	<input type="checkbox"/>
3/18/2014	SUBJECT CITATION	<b>22791</b>		MROSD 701.1(b) Dog in prohibited area	<input type="checkbox"/>
3/18/2014	SUBJECT CITATION	<b>22792</b>		MROSD 701.1(b) Dog in prohibited area	<input type="checkbox"/>
3/18/2014	INCIDENT IR REPORT	<b>IR# 14F096</b>	Law Enforcement		
3/19/2014	VANDALISM			MROSD 703.1 Unlawful defacement	<input checked="" type="checkbox"/>
7/4/2014	SUBJECT CITATION	<b>22392</b>		MROSD 805.3 After hours	<input type="checkbox"/>
7/4/2014	SUBJECT CITATION	<b>22389</b>		MROSD 805.3 After hours	<input type="checkbox"/>
7/4/2014	INCIDENT IR REPORT	<b>IR# 14F208</b>	Law Enforcement		
7/4/2014	SUBJECT CITATION	<b>22887</b>		MROSD 805.3 After hours	<input type="checkbox"/>
7/4/2014	SUBJECT CITATION	<b>22886</b>		MROSD 805.3 After hours	<input type="checkbox"/>
7/4/2014	SUBJECT CITATION	<b>22884</b>		MROSD 805.3 After hours	<input type="checkbox"/>
7/4/2014	SUBJECT CITATION	<b>22391</b>		MROSD 805.3 After hours	<input type="checkbox"/>

Date	Report	Cite/IR #	Incident Type		Misdemeanor
<b>El Sereno Continued...</b>					<b>Count 64</b>
7/4/2014	SUBJECT CITATION	22885		MROSD 805.3	After hours <input type="checkbox"/>
7/4/2014	INCIDENT IR REPORT	IR# 14F209	Law Enforcement		
7/4/2014	SUBJECT CITATION	22390		MROSD 805.3	After hours <input type="checkbox"/>
7/10/2014	PARKING CITATION	SCC16942		MROSD 801.1(l)	Prohibited Areas (Nondesigned area) <input type="checkbox"/>
7/18/2014	INCIDENT IR REPORT	IR# 14F225	Law Enforcement		
7/18/2014	SUBJECT CITATION	22675		MROSD 805.3	After hours <input type="checkbox"/>
7/25/2014	SUBJECT CITATION	23018		MROSD 701.1(b)	Dog in prohibited area <input type="checkbox"/>
7/25/2014	INCIDENT IR REPORT	IR# 14F234	Law Enforcement	Uncited MROSD 701.1(c)	Leash required - Dog <input type="checkbox"/>
8/5/2014	INCIDENT IR REPORT	IR# 14F249	Law Enforcement		
8/5/2014	SUBJECT CITATION	22634		MROSD 701.1(b)	Dog in prohibited area <input type="checkbox"/>
8/25/2014	PARKING CITATION	SCC16948		MROSD 801.1(l)	Prohibited Areas (Nondesigned area) <input type="checkbox"/>
8/27/2014	INCIDENT IR REPORT	IR# 14F280	Fire Incident	Uncited MROSD 404.1	Outdoor fire without permit <input type="checkbox"/>
				Uncited H&S 11357(b)	Possession of Marijuana - < an ounce <input type="checkbox"/>
				Uncited PC 374.4(a)	Littering <input type="checkbox"/>
1/11/2015	SUBJECT WARNING	13253		MROSD 701.1(b)	Dog in prohibited area <input type="checkbox"/>
4/26/2015	SUBJECT CITATION	24134		MROSD 701.1(b)	Dog in prohibited area <input type="checkbox"/>
				Uncited MROSD 701.1(c)	Leash required - Dog <input type="checkbox"/>
5/17/2015	SUBJECT CITATION	23631		Uncited MROSD 701.1(a)	3 dogs maximum allowed <input type="checkbox"/>
				MROSD 701.1(b)	Dog in prohibited area <input type="checkbox"/>
6/26/2015	VANDALISM			MROSD 703.1	Unlawful defacement <input checked="" type="checkbox"/>
8/10/2015	SUBJECT WARNING	13567		MROSD 701.1(b)	Dog in prohibited area <input type="checkbox"/>
8/18/2015	SUBJECT WARNING	13491		MROSD 701.1(b)	Dog in prohibited area <input type="checkbox"/>
10/12/2015	INCIDENT IR REPORT	IR# 15F119	Law Enforcement		
10/12/2015	ACCIDENT	15F118	Medical - Other First Aid		
11/13/2015	SUBJECT WARNING	14903		MROSD 502.3(a)	Helmet required <input type="checkbox"/>
2/25/2016	INCIDENT IR REPORT	IR# 16F016	HazMat		
4/30/2016	PARKING CITATION	SCC19888		MROSD 801.1(a)	Prohibited Areas (Signed) <input type="checkbox"/>
5/6/2016	INCIDENT IR REPORT	IR# 16F044	Law Enforcement	Uncited MROSD 404.1	Outdoor fire without permit <input type="checkbox"/>
				Uncited PC 451	Arson <input type="checkbox"/>
5/9/2016	SUBJECT CITATION	23743		MROSD 701.1(c)	Leash required - Dog <input type="checkbox"/>
5/10/2016	SUBJECT CITATION	23843		MROSD 701.1(c)	Leash required - Dog <input type="checkbox"/>
5/10/2016	SUBJECT CITATION	23844		MROSD 701.1(c)	Leash required - Dog <input type="checkbox"/>
5/10/2016	SUBJECT CITATION	23845		MROSD 701.1(c)	Leash required - Dog <input type="checkbox"/>
5/15/2016	SUBJECT CITATION	23248		MROSD 701.1(b)	Dog in prohibited area <input type="checkbox"/>
5/22/2016	SUBJECT WARNING	15116		MROSD 701.1(b)	Dog in prohibited area <input type="checkbox"/>
5/22/2016	SUBJECT WARNING	15117		MROSD 701.1(b)	Dog in prohibited area <input type="checkbox"/>



Date	Report	Cite/IR #	Incident Type	Misdemeanor
<b>El Sereno Continued...</b>				<b>Count 64</b>
6/13/2016	SUBJECT CITATION	23744	MROSD 701.1(c) Leash required - Dog	<input type="checkbox"/>
6/25/2016	SUBJECT CITATION	23552	MROSD 701.1(c) Leash required - Dog	<input type="checkbox"/>
8/21/2016	SUBJECT WARNING	14472	MROSD 701.1(b) Dog in prohibited area	<input type="checkbox"/>

**Total Count 64**

# SELECTED EVENTS by PRESERVE [Detail]

DATES BETWEEN 1/1/2013 And 9/7/2016

EVENT TYPES: Subject

CITES TYPES: Citation

ALL INCIDENT TYPES

PRESERVES: El Sereno

ALL TRAILS, ALL VIOLATIONS

Date	Report	Cite/IR #	Incident Type		Misdemeanor
<b>El Sereno</b>					<b>Count 27</b>
1/27/2013	SUBJECT CITATION	22506	MROSD 701.1(b) Dog in prohibited area		<input type="checkbox"/>
4/27/2013	SUBJECT CITATION	22045	MROSD 502.3(a) Helmet required		<input type="checkbox"/>
5/4/2013	SUBJECT CITATION	22522	MROSD 701.1(b) Dog in prohibited area		<input type="checkbox"/>
1/2/2014	SUBJECT CITATION	22383	MROSD 701.1(b) Dog in prohibited area		<input type="checkbox"/>
2/16/2014	SUBJECT CITATION	21001	MROSD 701.1(b) Dog in prohibited area		<input type="checkbox"/>
3/18/2014	SUBJECT CITATION	22791	MROSD 701.1(b) Dog in prohibited area		<input type="checkbox"/>
3/18/2014	SUBJECT CITATION	22792	MROSD 701.1(b) Dog in prohibited area		<input type="checkbox"/>
7/4/2014	SUBJECT CITATION	22391	MROSD 805.3 After hours		<input type="checkbox"/>
7/4/2014	SUBJECT CITATION	22884	MROSD 805.3 After hours		<input type="checkbox"/>
7/4/2014	SUBJECT CITATION	22885	MROSD 805.3 After hours		<input type="checkbox"/>
7/4/2014	SUBJECT CITATION	22886	MROSD 805.3 After hours		<input type="checkbox"/>
7/4/2014	SUBJECT CITATION	22887	MROSD 805.3 After hours		<input type="checkbox"/>
7/4/2014	SUBJECT CITATION	22390	MROSD 805.3 After hours		<input type="checkbox"/>
7/4/2014	SUBJECT CITATION	22392	MROSD 805.3 After hours		<input type="checkbox"/>
7/4/2014	SUBJECT CITATION	22389	MROSD 805.3 After hours		<input type="checkbox"/>
7/18/2014	SUBJECT CITATION	22675	MROSD 805.3 After hours		<input type="checkbox"/>
7/25/2014	SUBJECT CITATION	23018	MROSD 701.1(b) Dog in prohibited area		<input type="checkbox"/>
8/5/2014	SUBJECT CITATION	22634	MROSD 701.1(b) Dog in prohibited area		<input type="checkbox"/>
4/26/2015	SUBJECT CITATION	24134	MROSD 701.1(b) Dog in prohibited area		<input type="checkbox"/>
			<i>Uncited</i> MROSD 701.1(c) Leash required - Dog		<input type="checkbox"/>
5/17/2015	SUBJECT CITATION	23631	<i>Uncited</i> MROSD 701.1(a) 3 dogs maximum allowed		<input type="checkbox"/>
			MROSD 701.1(b) Dog in prohibited area		<input type="checkbox"/>
5/9/2016	SUBJECT CITATION	23743	MROSD 701.1(c) Leash required - Dog		<input type="checkbox"/>
5/10/2016	SUBJECT CITATION	23843	MROSD 701.1(c) Leash required - Dog		<input type="checkbox"/>
5/10/2016	SUBJECT CITATION	23844	MROSD 701.1(c) Leash required - Dog		<input type="checkbox"/>
5/10/2016	SUBJECT CITATION	23845	MROSD 701.1(c) Leash required - Dog		<input type="checkbox"/>
5/15/2016	SUBJECT CITATION	23248	MROSD 701.1(b) Dog in prohibited area		<input type="checkbox"/>
6/13/2016	SUBJECT CITATION	23744	MROSD 701.1(c) Leash required - Dog		<input type="checkbox"/>
6/25/2016	SUBJECT CITATION	23552	MROSD 701.1(c) Leash required - Dog		<input type="checkbox"/>

**Total Count 27**

# SELECTED EVENTS by PRESERVE [Detail]

DATES BETWEEN 1/1/2013 And 9/7/2016

EVENT TYPES: Parking

CITES TYPES: Citation, Warning

ALL INCIDENT TYPES

PRESERVES: El Sereno

ALL TRAILS, ALL VIOLATIONS

Date	Report	Cite/IR #	Incident Type	Misdemeanor
<b>El Sereno</b>				<b>Count 5</b>
1/19/2014	PARKING WARNING	12935	MROSD 801.1(a) Prohibited Areas (Signed)	<input type="checkbox"/>
3/9/2014	PARKING CITATION	SCC16939	SCC B14-33.2(a)3 Parking blocking road or driveway	<input type="checkbox"/>
7/10/2014	PARKING CITATION	SCC16942	MROSD 801.1(l) Prohibited Areas (Nondesignated area)	<input type="checkbox"/>
8/25/2014	PARKING CITATION	SCC16948	MROSD 801.1(l) Prohibited Areas (Nondesignated area)	<input type="checkbox"/>
4/30/2016	PARKING CITATION	SCC19888	MROSD 801.1(a) Prohibited Areas (Signed)	<input type="checkbox"/>

**Total Count 5**





Midpeninsula Regional  
Open Space District

## **PLANNING AND NATURAL RESOURCES COMMITTEE**

Los Gatos Adult Recreation Center  
208 East Main Street  
Los Gatos, CA 95030

**October 6, 2016**

### **DRAFT MINUTES**

#### **CALL TO ORDER**

Director Harris called the meeting of the Planning and Natural Resources Committee to order at to order at 7:03 p.m.

#### **ROLL CALL**

**Members Present:** Jed Cyr, Cecily Harris, and Curt Riffle

**Members Absent:** None

**Staff Present:** Assistant General Manager Ana Ruiz, General Counsel Sheryl Schaffner, Planning Manager Jane Mark, Senior Planner Tina Hugg, Planner I Alicia Halpern, Visitor Services Manager Michael Newburn, and District Clerk Jennifer Woodworth

#### **ORAL COMMUNICATIONS**

No speakers present.

#### **ADOPTION OF AGENDA**

**Motion:** Director Cyr moved, and Director Riffle seconded the motion to adopt the agenda.

**VOTE: 3-0-0**

#### **COMMITTEE BUSINESS**

**1. Approve the July 11, 2016 Planning and Natural Resources Committee Minutes**

**Motion:** Director Cyr moved, and Director Riffle seconded the motion to approve the minutes for the July 11, 2016 Planning and Natural Resources Committee meeting.

**VOTE: 3-0-0**

**2. Proposed Expansion of Dog Access on All Trails at El Sereno Open Space Preserve (R-16-122)**

Assistant General Manager Ana Ruiz spoke regarding previous meetings and workshops related to opening all current trails in the El Sereno Open Space Preserve to on-leash dogs. The project was discussed as part of the District's Vision Plan process and included as a Measure AA project. Following Committee consideration of the proposal, the item will be considered by the Board of Directors.

Planner I Alicia Halpern provided an overview of the El Sereno Open Space Preserve, current limited and full dog access in the District's preserves, and the regulations included in the District's ordinance related to dogs. Ms. Halpern described the dog access site evaluation criteria, which guide when areas are opened to dog access, and applied these criteria to the trail system within the El Sereno trail system. All of the trails currently in El Sereno are proposed to be opened for on-leash dog access, except for San Jose Water Company property. At a recent neighborhood meeting, neighbors expressed concern regarding limited parking along Sheldon Rd. Since then, District staff has met with these neighbors and will continue to look for solutions. District staff has proposed additional signage to educate visitors regarding compliance with District regulations. Finally, Ms. Halpern discussed the next steps of the process, including environmental review, management plan amendment, and continuing negotiations with the San Jose Water Company.

Director Riffle asked if dog users are currently visiting the preserve, and whether the proposed change will create much of a change in use.

Ms. Halpern explained some dog users already visit the preserve, but staff does not anticipate a large increase of use due to limited parking and other regional dog access areas nearby.

Director Riffle inquired if additional trail use by dogs could lead to additional user conflict among the different user types, especially equestrians and dog owners.

Ms. Halpern explained the trails are wide, there is limited equestrian use of the preserves.

Director Riffle expressed concern regarding a lack of dog access on San Jose Water Company property.

Ms. Ruiz reported District staff is in the process of negotiating an agreement with San Jose Water Company to formalize access rights. For the time being, San Jose Water Company has requested that portion of the trail be removed from the District's map.

Director Harris inquired regarding the amount of time field staff spends patrolling and maintaining these trails and whether the time would increase based on allowing dog access.

Visitor Services Manager Michael Newburn reported El Sereno has limited use and as a result has few problems. If needed, patrol could be increased, especially if when any changes to permitted uses are made.

Public comment opened at 7:40 p.m.

Dave Abelson, resident of Montevina Road, spoke in favor of dog access at El Sereno and other nearby trails with dog access including possible regional trail connections.

Lindsay Eaton, resident of Montevina Road, spoke regarding limited use of the parking lot on that road.

Maria Ristow, resident of Los Gatos, spoke in favor of dog access at El Sereno.

Sue Cooney, resident of Sheldon Road, spoke in favor of dog access at El Sereno and explained there is no parking along Sheldon Road for non-residents due to the narrowness of the road.

Mr. Newburn reported the District has an access easement on Sheldon Rd. that allows access to preserve visitors during the hours the preserve is opened.

Public comment closed at 7:50 p.m.

Director Riffle spoke in favor of the General Manager's recommendation and regarding potential trail connections in the future.

Director Harris expressed her concerns regarding the level of resources needed for this project and spoke in favor of gaining access to San Jose Water Company property land.

**Motion:** Director Riffle moved, and Director Cyr seconded the motion to:

1. Confirm and recommend Board approval of the proposed expansion of dog access on all existing El Sereno Open Space Preserve (Preserve) trails as the Project Description for purposes of the California Environmental Quality Act (CEQA) analysis.
2. Confirm and recommend Board approval of the above Project Description for a future Use and Management Plan Amendment for the Preserve, excluding trail segment over San Jose Water Company Property, pending formalized access rights.

**VOTE: 3-0-0**

### **ADJOURNMENT**

Director Harris adjourned the meeting of the Planning and Natural Resources Committee of Midpeninsula Regional Open Space District at 7:55 p.m.

---

Jennifer Woodworth, MMC  
District Clerk