



Midpeninsula Regional  
Open Space District

R-17-37  
Meeting 17-08  
March 22, 2017

## AGENDA ITEM 7

### AGENDA ITEM

Award of Contract with Mesiti-Miller Engineering, Inc., for the preparation of construction documents, construction bid process support and construction oversight for the Webb Creek Bridge Replacement Project at Bear Creek Redwoods Open Space Preserve

### GENERAL MANAGER'S RECOMMENDATIONS

1. Authorize the General Manager to enter into a multi-year professional services contract with Mesiti-Miller Engineering, Inc., to prepare construction documents, support the construction bid process, and provide technical construction oversight for the Webb Creek Bridge Replacement Project at Bear Creek Redwoods Open Space Preserve for a not-to-exceed amount of \$115,560.
2. Authorize a 15% contingency of \$17,334 to cover potential unforeseen requirements, for a not-to-exceed total contract amount of \$132,894.

### SUMMARY

The District is in need of a qualified consultant with experience in rural bridge design to complete construction documents, assist the District during the contractor bid process, and provide construction oversight for the replacement of the Webb Creek Bridge (Bridge Project) at Bear Creek Redwoods Open Space Preserve (Preserve). The Bridge Project supports the public opening of the west side of the Preserve in late 2018. Based on the results of a Request for Qualifications and Proposals (RFQP) and subsequent interviews with three consultant teams, the General Manager recommends awarding a contract to Mesiti-Miller Engineering, Inc. for a total amount not-to-exceed \$132,894. Sufficient funds are included in the Fiscal Year 2016-17 (FY2017-17) Budget to carry work through June 30. Funds for subsequent budget cycles will be included as part of the three-year Capital Improvement Program, which the Board will review and consider in May 2017.

### MEASURE AA

A 5-year Measure AA Project List was approved by the Board at their October 29, 2014 meeting and includes Project #21-05 Bear Creek Redwoods Public Access Phase I Implementation. This proposed contract serves the goals of Portfolio #21 by providing the necessary design, engineering, permitting, and construction administrative services to replace a bridge that is necessary to safely open the western trails to public access, as well as maintain safe access for patrol, maintenance, and emergency vehicles.

### DISCUSSION

The Webb Creek Bridge is within the Phase 1 area of the Preserve, located on the west side of Bear Creek Road (Attachment 1). In July 2016, Waterways Consulting, Inc., updated a road and

trail erosion inventory for the western side of Bear Creek Redwoods Open Space Preserve (Inventory), identifying deficiencies and recommending fixes for the existing road and trail network. One of the deficiencies identified was the Webb Creek Bridge. A bridge replacement is recommended and a preliminary design (Attachment 2) has been prepared to inform the final design and development of construction documents. To proceed with the next phase of design, an RFQP was prepared in January 2017. The table below notes the results of the RFQP process:

**RFQP Process:**

Date	
1/26/17	Request for qualifications and proposals emailed to consultants list and posted on District website.
2/7/17	Pre-proposal onsite job walk attended by 12 consultants
2/24/17	Proposals received from 7 consultant teams
3/6/17	Interviews held for the 3 finalists
3/22/17	Recommended Board award of contract to Mesiti-Miller Engineering.

The recommended contract with Mesiti-Miller Engineering includes a phased design process that allows for periodic District review as the design proceeds into formal construction documents. The contract also includes regulatory and building permit assistance, which will occur in tandem with the design process, as well as construction monitoring and oversight to ensure that the contractor complies with the construction plans and design specifications.

**FISCAL IMPACT**

The District's FY2016-17 Budget and Action Plan includes \$596,200 for the Bear Creek Redwoods Public Access Roads and Trails projects (MAA 21-005). There are sufficient funds in the project budget to cover the recommended action and expenditures in FY2016-17.

Funds for subsequent budgets for professional monitoring services will be included as part of the proposed three-year Capital Improvement Program to be considered by the Board in May 2017.

	FY2016-17	FY2017-18
<b>MAA 21-005 Budget:</b>	<b>\$596,200</b>	
Spent to Date (as of 3/8/2017):	\$79,838	
Encumbrances:	\$151,719	
Mesiti-Miller Engineering Contract:	\$117,894	\$15,000
<b>Budget Remaining (Proposed):</b>	<b>\$246,749</b>	

The following table outlines the Measure AA Portfolio budget, costs to date, and the fiscal impact related to the MAA 21-005 Bear Creek Redwoods Public Access Roads and Trails projects. This table includes the impact of all three Board actions for award of contract scheduled for the March 22, 2017 meeting.

<b>MAA 21 Portfolio Allocation:</b>	<b>\$17,478,000</b>
Life-to-Date Spent (as of 3/14/17):	\$593,183
Total Encumbrances:	\$188,601
Award of Contract to John Northmore Roberts and Associates (MAA 21-004):	\$922,190
Award of Contract to Mesiti-Miller (MAA21-005):	\$132,894
Award of Contract to HydroScience Engineers (MAA21-003):	\$159,126

Total BCR Projects Budget Balances*:	\$1,116,295
<b>Balance Remaining (Proposed):</b>	<b>\$14,365,711</b>

\*FY2017 BCR Projects Budgets *less* the proposed contracts, current encumbrances, and year-to-date expenditures, reflecting current fiscal commitments to other BCR projects this fiscal year.

## **BOARD COMMITTEE REVIEW**

The Bear Creek Redwoods Preserve Plan (Preserve Plan), which identifies the Webb Creek Bridge Replacement as one of the implementation items, involved extensive Committee and Board review. The Board approved the Preserve Plan at the January 25, 2017 meeting (Report R-17-15).

## **PUBLIC NOTICE**

Public notice of this Agenda Item was provided as required by the Brown Act.

## **CEQA COMPLIANCE**

The Board certified the Draft and Final EIR for the Preserve Plan at the January 25, 2017 meeting (Report R-17-15). The Preserve Plan identifies the Webb Creek Bridge Replacement as one of the implementation items.

## **NEXT STEPS**

Upon Board authorization, the General Manager will direct staff to enter into contract with Mesiti-Miller Engineering, Inc. to complete construction documents, provide bid assistance, and provide construction observation and oversight for the Webb Creek Bridge Replacement Project. This bridge replacement project is anticipated to be constructed in the summer/early fall of 2018.

Award of construction contract will come back to the Board for review and approval at a future date.

### **Attachments**

1. Map of Construction Area from the 2016 Updated Road and Trail Erosion Inventory: West Side (Webb Creek) Bear Creek Redwoods Open Space Preserve
2. Preliminary bridge design (plan view) prepared as part of the 2016 Updated Road and Trail Erosion Inventory: West Side (Webb Creek) Bear Creek Redwoods Open Space Preserve

Responsible Department Head:

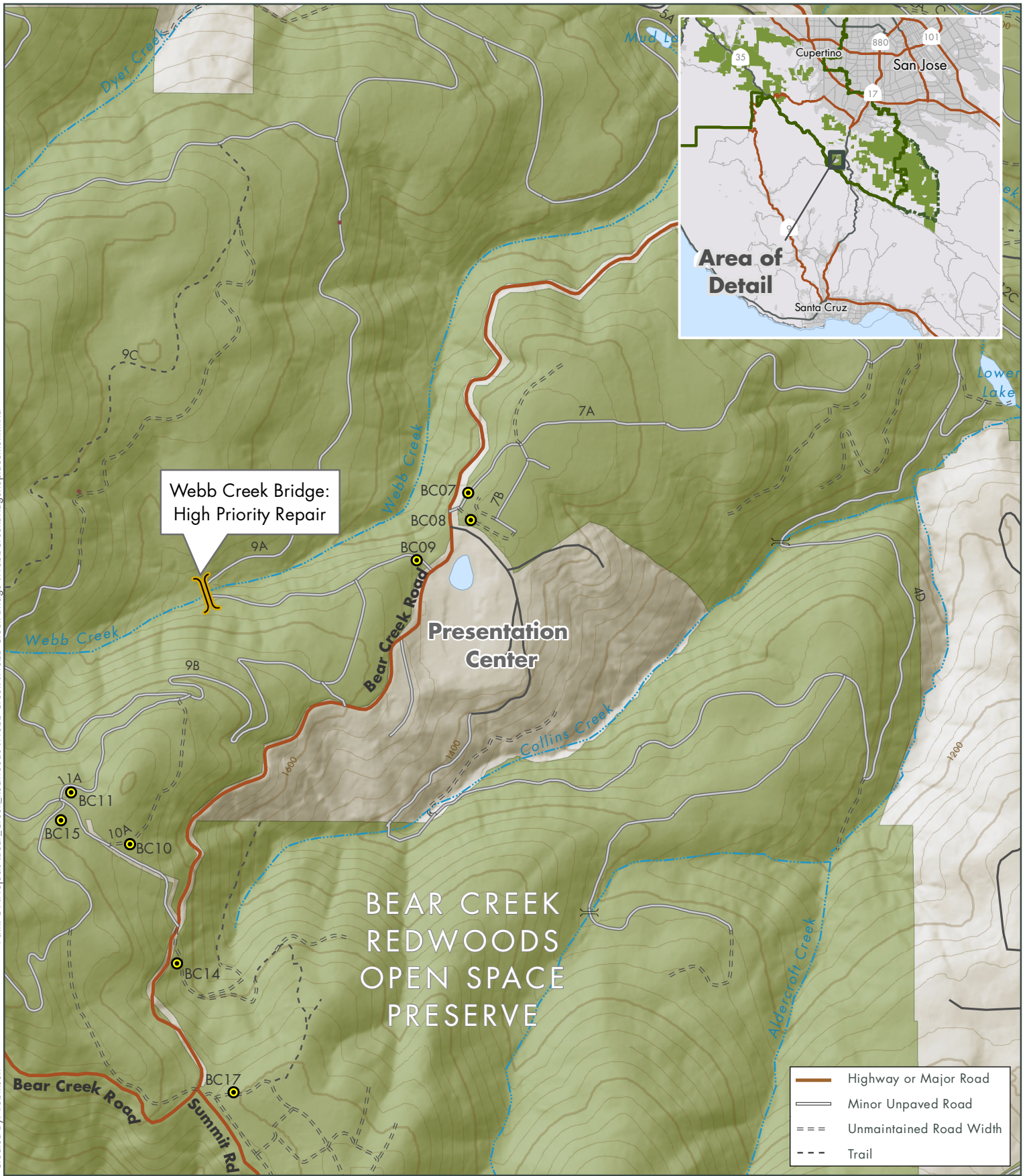
Jason Lin, Engineering and Construction Department Manager

Prepared by:

Matt Brunnings, Capital Project Manager, Engineering and Construction Department

Path: G:\Projects\Bear\_Creek\_Redwoods\Webb\_Creek\Redwoods\Webb\_Creek\_Bridge\WebbCreekBridgePlacement.mxd

Created By: robinson



Webb Creek Bridge:  
High Priority Repair

Presentation  
Center

BEAR CREEK  
REDWOODS  
OPEN SPACE  
PRESERVE

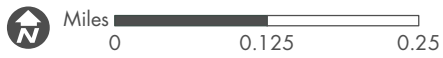
- Highway or Major Road
- Minor Unpaved Road
- Unmaintained Road Width
- Trail

### Attachment 1: Webb Creek Bridge Location

- Webb Creek Bridge
- Gate (#)
- MROSD Preserves
- Private Property

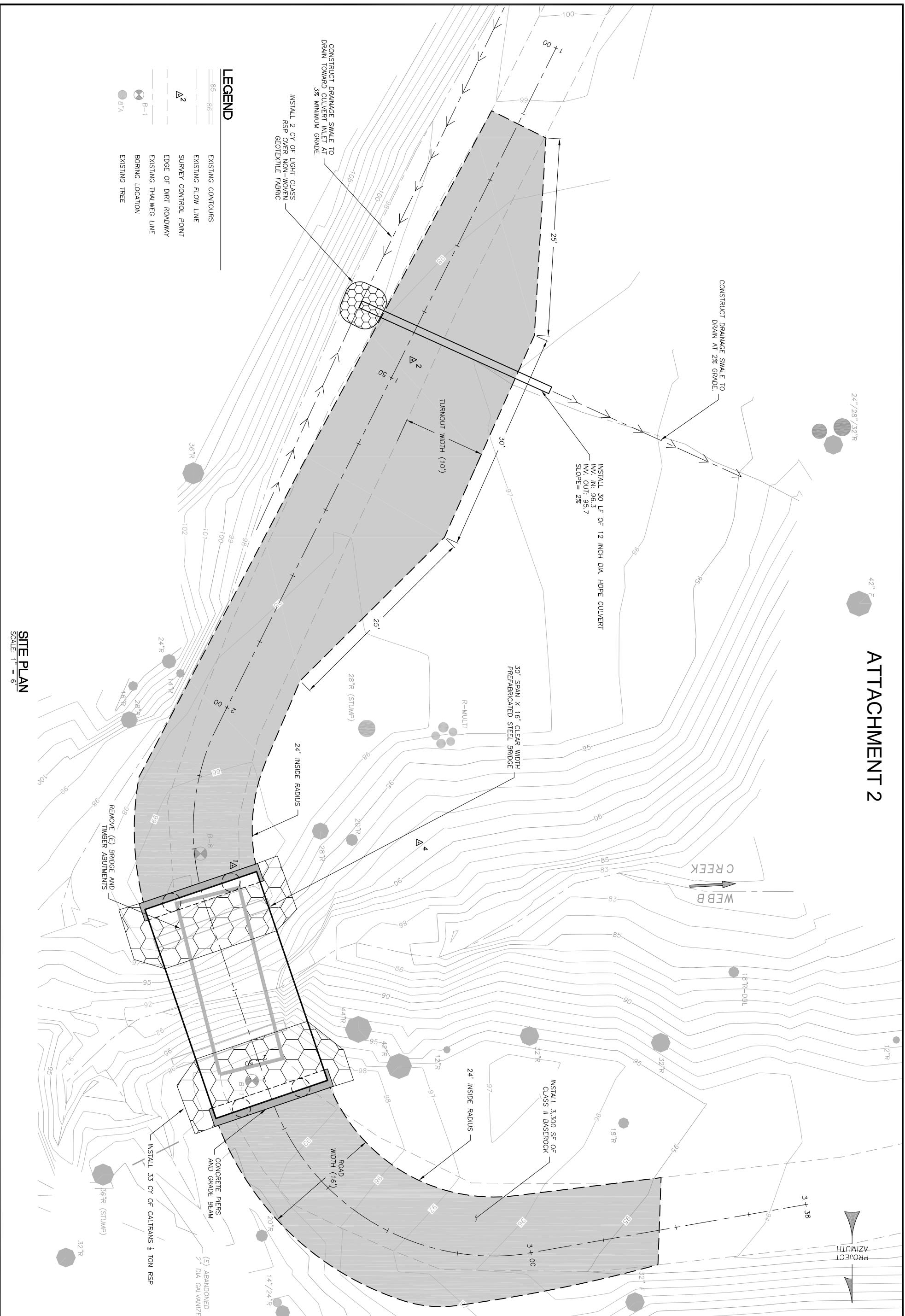
Midpeninsula Regional  
Open Space District  
(MROSD)

March 2017



While the District strives to use the best available digital data, these data do not represent a legal survey and are merely a graphic illustration of geographic features.

# ATTACHMENT 2



**SITE PLAN**  
SCALE: 1" = 6'

**WATERWAYS**  
CONSULTING INC.

509A SWIFT ST.  
SANTA CRUZ, CA 95060  
PH: (831)421-9291 / FAX: (888)819-6847  
WWW.WATWAYS.COM

**PRELIMINARY**  
NOT FOR CONSTRUCTION

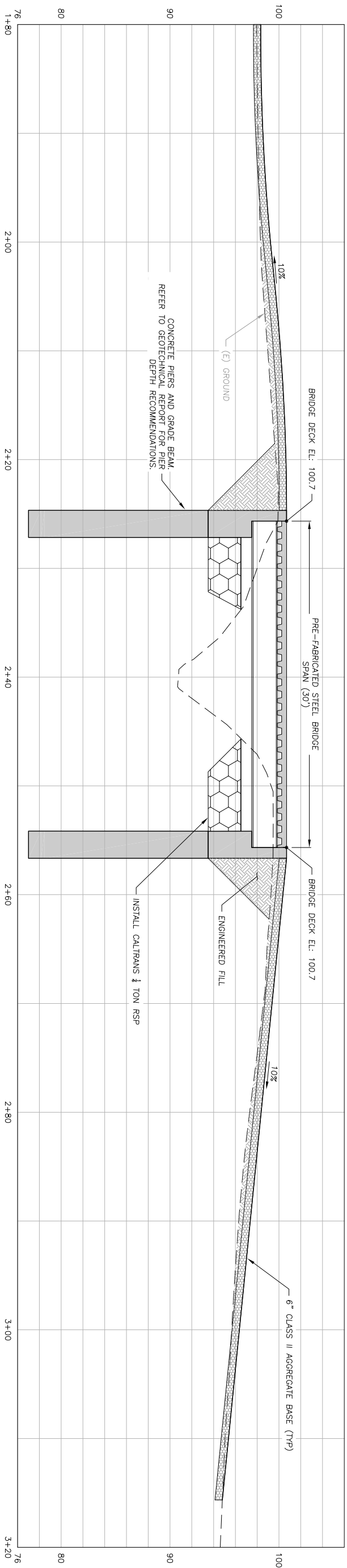
PREPARED AT THE REQUEST OF:  
MIDPENINSULA REGIONAL  
OPEN SPACE DISTRICT

**WEBB CREEK BRIDGE**  
CONCEPT LEVEL  
SUBMITTAL

**WEBB CREEK BRIDGE**  
CONCEPT LEVEL  
SUBMITTAL

DESIGNED BY: B.M.S.	DRAWN BY: M.L.B.
CHECKED BY: M.M.W.	DATE: 8/12/16
JOB NO.: 16-017	
BAR IS ONE INCH ON ORIGINAL DRAWING ADJUST SCALES FOR REDUCED PLOTS.	
0" = 1"	

# ATTACHMENT 2



**BRIDGE PROFILE**  
SCALE: 1" = 5'

**WATERWAYS**  
CONSULTING INC.

509A SWIFT ST.  
SANTA CRUZ, CA 95060  
PH: (831) 421-9291 / FAX: (888) 819-6847  
WWW.WATWAYS.COM

**PRELIMINARY**  
NOT FOR CONSTRUCTION

PREPARED AT THE REQUEST OF:  
MIDPENINSULA REGIONAL  
OPEN SPACE DISTRICT

**BRIDGE  
PROFILE**

**WEBB CREEK BRIDGE**  
CONCEPT LEVEL  
SUBMITTAL

DESIGNED BY: B.M.S.  
DRAWN BY: M.L.B.  
CHECKED BY: M.M.W.  
DATE: 8/12/16  
JOB NO.: 16-017

BAR IS ONE INCH ON  
ORIGINAL DRAWING  
ADJUST SCALES FOR  
REDUCED PLOTS

0 1"

C2 OF 2