



Midpeninsula Regional  
Open Space District

R-17-93  
Meeting 17-17  
July 26, 2017

## AGENDA ITEM 4

### AGENDA ITEM

Award of Contract for Sediment Survey at El Corte de Madera Open Space Preserve

### GENERAL MANAGER'S RECOMMENDATIONS

1. Authorize the General Manager to enter into a multi-year professional services contract with Balance Hydrologics, Inc. to conduct a sediment study at El Corte de Madera Open Space Preserve for a base contract amount of \$146,907.50.
2. Authorize a 10% contingency of \$14,691.50 to be expended only if necessary to cover unforeseen conditions, for a not-to-exceed total contract amount of \$161,598.

### SUMMARY

The proposed award of contract for \$161,598 to Balance Hydrologics, Inc. and associated sediment study repeats a study conducted in 2004-09 that occurred at the beginning of the Watershed Protection Plan (WPP) in El Corte de Madera Open Space Preserve (ECDM). The aim of the present study is to complete the sediment monitoring to measure sediment reductions resulting from completion of the WPP at ECDM.

### DISCUSSION

In 2001, the District met with multiple regulatory agencies in response to a citizen complaint about the roads and trails within ECDM contributing excess sediment to El Corte de Madera Creek and ultimately to San Gregorio Creek. The regulatory agencies outlined four requirements to address the issues:

1. Identify sources of sedimentation in the preserve that originate from roads and trails;
2. Evaluate recreation, maintenance, or management activities that may be responsible for sedimentation;
3. Develop a plan to implement the necessary repairs or corrective actions at high-priority sites throughout the preserve; and
4. Establish a monitoring program to track the success of corrective actions.

In 2002, the Board approved contracting with an engineering geologist (Tim Best) to address requirements 1-3 by analyzing potential and active sediment sources in the roads and trails at ECDM and develop road and trail upgrades to reduce and eliminate sediment transport to nearby streams and watercourses (R-02-26). To develop a monitoring program and fulfill the 4<sup>th</sup> requirement set out by the regulatory agencies, the Board approved a contract with Balance Hydrologics to study sediment as it moves through the streams in ECDM (R-04-72). This work

consisted of an inventory of large landslides near the streams, installation of a stream and rain gage to measure flows and storm events, water quality monitoring, and direct measurement of sediment in pool features within the stream. The study was used as an effectiveness monitoring tool during the WPP work from 2004–2009. Because the WPP work took more time than originally anticipated, staff determined that on-going monitoring would be cost-prohibitive and that the data gathered to date was sufficient to characterize the “before or baseline” conditions of the WPP. The total cost of the prior study was approximately \$145,000 and included significant Midpen staff time.

The WPP took more than 13 years of road and trail work implemented by Midpen staff and contractors. This work is estimated to have cost \$1.25 million dollars and required thousands of hours of staff time. In total, the WPP work at ECDM resulted in the upgrade of 20 miles of road and trail, which included replacing culverts, installing bridges, reducing from road to trail width many miles of road, and decommissioning some roads altogether (see Attachment 1)..

The WPP work is now substantially complete and Midpen’s efforts are transitioning into regular maintenance. Conducting the stream study at this time will capture the conditions ‘after’ the WPP and fulfill the original goal of the monitoring program. The consultant’s data gathering will take place over two years to capture an adequate quantity of stream data. A final technical report will be available in the fall of 2019. In addition to the consultant’s standard technical report, staff has included funds in the contract for the consultant to work in collaboration with staff to draft a scientific paper suitable for publishing in a journal and a summary report suitable for understanding by the general public. Completion of the WPP presents a unique opportunity to share the ‘lessons learned’ and effectiveness of this multifaceted work. Monitoring, adaptive management, and similar retrospectives aide Midpen staff in future efforts and contribute to the community of land management.

In June 2017, a RFPQ for hydrology and geomorphology services was issued. 9 firms were qualified to perform general hydrologic services. 4 of the firms were qualified to perform the necessary technical work for the sediment reassessment project. Of those 4, 2 of the firms proposed and bid on the sediment reassessment project (Table 1).

<b>Firm</b>	<b>Proposal Cost</b>
Balance Hydrologics, Inc.	\$146,907.50
Kamman Hydrology and Engineering, Inc.	\$149,014.00

Table 1. Bids received for Sediment Reassessment

Balance Hydrologics, Inc. was deemed the most qualified firm for this project.

Staff has also used the RFPQ process to establish hydrologic services on-call contracts with 5 of the most qualified firms for \$50,000 each. An additional 3 firms are also qualified and may be awarded on-call contracts if needed. These on-call services encompass a broad array of hydrology-related work including pond assessments, water rights monitoring and reporting, well assessments, water quality monitoring, aquatic habitat assessments, and design work in support of the above. These on-call services are anticipated to include all of the work necessary for small projects, preliminary work in advance of procuring consultant services for large projects, and on as needed basis for emergency work in response to natural disturbances and other unforeseen circumstances.

**FISCAL IMPACT**

The District's FY2017-18 Budget and Action Plan includes \$60,000 in the Natural Resources Department budget for the ECDM WPP Sediment Science Project. The allocated budget is sufficient to fund Year 1 of the project in FY2017-18. Staff anticipates requesting additional funds of ~\$65,000 for the FY2018-19 budget and \$40,000 for the FY2019-20 budget. Budget for the on-call hydrologic services is included in individual project budgets and funds are only guaranteed to consultants at the time individual projects are developed and task orders issued.

**BOARD COMMITTEE REVIEW**

A Committee did not previously review this report.

**PUBLIC NOTICE**

Public notice was provided as required by the Brown Act.

**CEQA COMPLIANCE**

This project involves minor alterations to the land, such as temporary stream gages, for the purpose of information collection. "Information Collection" is categorically exempt under the California Environmental Quality Act section 15306.

**NEXT STEPS**

Upon Board authorization, the General Manager will enter into contract with Balance Hydrologics, Inc. to begin the sediment study at ECDM. This study is anticipated to be completed in the fall of 2019. The hydrologic services on-call contracts will be executed under the General Manager's signing authority. Individual task orders are anticipated shortly thereafter.

Attachment 1:

El Corte de Madera Open Space Preserve Watershed Protection Program Project Map

Responsible Department Head:

Kirk Lenington, Natural Resources Department

Prepared by:

Aaron Hébert, Water Resources Specialist, Natural Resources Department

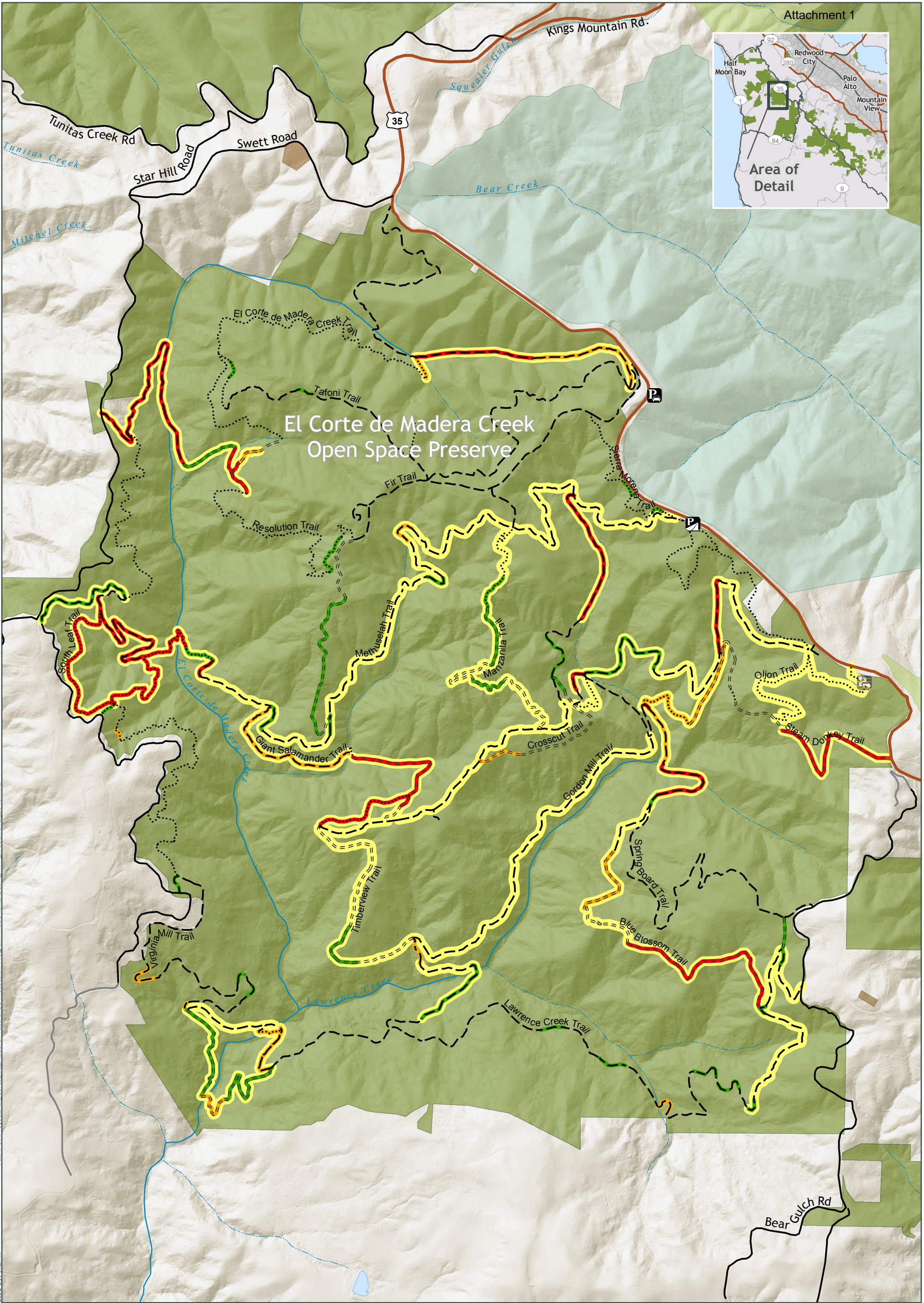
Contact person:

Aaron Hébert, Water Resources Specialist, Natural Resources Department

Graphics prepared by:

Timothy Best, Certified Engineering Geologist

Jamie Hawk, GIS Technician



Path: G:\Projects\El\_Corte\_de\_Madera\Watershed Protection Program\Treatments\ECDM\_WPP\_Treatments\_2015.mxd  
Created By: jhawk

### Watershed Protection Program, Completed Treatments (2003-2015)

- MROSD Preserves
- Watershed Land
- Private Property
- Completed Treatment
- Dirt Road
- Skid (Tractor) Trail
- Trail
- High Priority
- Moderate Priority
- Low Priority

Midpeninsula Regional Open Space District (MROSD)



October, 2015

While the District strives to use the best available digital data, this data does not represent a legal survey and is merely a graphic illustration of geographic features.