



Midpeninsula Regional
Open Space District

R-17-99
Meeting 17-18
August 9, 2017

AGENDA ITEM 9

AGENDA ITEM

Award of Contract with MIG, Inc., to provide professional consultant services for a District-wide Americans with Disabilities Act (ADA) Self-Evaluation and Transition Plan Update

GENERAL MANAGER'S RECOMMENDATIONS

1. Authorize the General Manager to enter into a multi-year contract with MIG, Inc., to provide professional services for the District-wide ADA Self-Evaluation and Transition Plan Update for a base contract amount of \$179,333.
2. Authorize a 15% contingency of \$25,667, to be expended only if necessary to cover unforeseen conditions, for a total not-to-exceed contract amount of \$205,000.

SUMMARY

The District is currently updating its 1993 Accessibility Plan with a District-wide ADA Self-Evaluation and Transition Plan, which requires the services of a qualified consultant. Updating the District's Accessibility Plan is a high priority action item in the Fiscal Year (FY) 2017-18 Budget and Action Plan. The project will evaluate policies, programs, facilities and physical barriers to accessibility at the District, and will identify barrier removal solutions that will facilitate the opportunity of access to all individuals. Based on the results of the Request for Qualifications and Proposals (RFQP) issued for the project, the General Manager recommends awarding a contract to MIG, Inc. for a total amount not-to-exceed \$205,000 covering two fiscal years. The Planning Department's FY2017-18 budget includes funds sufficient to cover the project's anticipated FY2017-18 expenditures of \$182,000. Any contract amount remaining at the end of FY2017-18 will be proposed in the Budget for FY2018-19.

DISCUSSION

The District is committed to meeting its legal ADA mandates and to ensuring access to open space, recreation facilities, and programs by people with disabilities. The ADA, enacted in 1990, is a civil rights law that prohibits discrimination of people with disabilities in employment, transportation, public accommodation, communications, and governmental activities. The ADA states that:

“No qualified individual with a disability shall, by reason of that disability, be excluded from participation in or denied the benefits of services, programs, or activities of a public entity or subject to discrimination by such entity.”

The District is subject to the provisions of Title II of the ADA, which prohibits discrimination in the provision of programs, activities and services offered to the public by a state or local government. Title II requires that public agencies prepare a self-evaluation of compliance, develop a grievance procedure, designate an individual to oversee compliance, and develop a transition plan if structural changes are necessary for achieving program accessibility.

The Board adopted the Access Plan for Persons with Disabilities (“1993 Accessibility Plan”) (Attachment 1) on January 13, 1993 (R-93-08, Attachment 2). The 1993 Accessibility Plan included an assessment of the District’s developed Preserve features and programs, a prioritized list for implementing access improvements, and the designation of the Planning Manager as the ADA Coordinator. The District completed the access improvements and fulfilled the public communication measures to the volunteer and docent programs by the January 26, 1995 deadline.

Since the adoption of the 1993 Accessibility Plan, ADA regulations and accessibility guidelines have changed and the District has expanded many of its facilities, programs, activities and services. First, amendments to the ADA broaden its applicability and expand accessibility requirements to recreational facilities. Second, newly adopted state and federal guidelines further define and clarify compliance requirements for agencies that provide outdoor recreation opportunities. These changes necessitate a timely review and update of the 1993 Accessibility Plan with a District-wide ADA Self-Evaluation and Transition Plan.

The District has expanded the preserve system significantly over the last 24 years, since the Board adopted the 1993 Accessibility Plan. The agency’s facilities, operations and programs have grown from 35,000 acres, as the District has added over 25,000 acres to the regional greenbelt. The number of employees at the District has also increased, more than doubling in size to its present 140 employees. The volunteer and docent programs have also expanded and accommodate a growing number of people and activities each year.

As discussed above, the District needs to conduct a self-evaluation and develop a transition plan as part of this update process. The resulting ADA Self-Evaluation and Transition Plan (Plan) will guide, prioritize and monitor implementation of barrier removal throughout District lands. The consultant scope of work includes:

- Evaluating District preserves and facilities according to current federal and state standards for accessibility;
- Evaluating District programs and policies to identify barriers to services, programs and activities provided by the District;
- Preparing a barrier analysis tool and project database that integrates with the District’s Enterprise GIS;
- Assisting with the development of a public information portal on the District website;
- Developing the District’s Self-Evaluation and Transition Plan;
- Presenting draft ADA Self-Evaluation and Transition Plan to the Board and other groups; and
- Conducting trainings for District staff to assist with implementation of the ADA Self-Evaluation and Transition Plan.

Public outreach for this project includes presentations, trainings, and the development of a public information portal. MIG will present the draft ADA Self-Evaluation and Transition Plan and solicit comments from the Board, the San Mateo County Commission on Disabilities, and the

Santa Clara County Commission for Persons with Disabilities. Trainings about accessible facilities and customer service will be provided by MIG for District staff, docents and volunteers. MIG will support the development of a webpage dedicated to the ADA Self-Evaluation and Transition Plan Update. The webpage will serve as a public portal with information about the update process, meeting summaries, project schedule, and opportunities for public comment on the draft ADA Self-Evaluation and Transition Plan.

Consultant Selection

A Request for Qualifications and Proposals (RFQP) was released on May 22, 2017 via direct e-mail and posting on the District website to solicit interest from qualified professionals to help develop the ADA Self-Evaluation and Transition Plan. Five firms attended a mandatory pre-proposal meeting held on May 30, 2017. Two firms submitted proposals, and the proposal amounts were comparable. Staff evaluated the proposals to assess the qualifications of each proposer, the quality of the proposal, the implementation approach, and the overall team expertise. Staff interviewed both consultant teams during the week of June 19, 2017. The two firms interviewed are listed below:

Firm	Location	Proposal Amount
MIG, Inc	Berkeley, CA	\$174,373
DAC	Oroville, CA	\$143,570

MIG, Inc. was deemed most qualified and best suited for the project based on their response to the RFQP, proposed project approach, and responses during the interview. A key reason for the selection of MIG, Inc. was their team's extensive experience assisting parks and open space agencies with self-evaluations, transition plans, and accessibility. They provided a unique strategic approach and understanding to the development of an ADA Self-Evaluation and Transition Plan that balances the District's mission to provide passive recreation in natural environments with sensitive resources. The MIG team is led by landscape architects and Certified Access Specialists (CAsp), and includes an ecologist. In addition, MIG offers substantial experience in GIS and database development that complements the District's data infrastructure and will support effective, long-term implementation of the updated Accessibility Plan. The subject contract with MIG reflects an updated proposal amount that includes additional scope items.

FISCAL IMPACT

The Planning Department's FY2017-18 budget includes funds sufficient to cover the project's anticipated FY2017-18 expenditures of \$182,000. The ADA project budget includes \$60,000 and will be adjusted administratively by \$122,000 to cover additional unanticipated scope elements via projected cost savings from existing projects as the fiscal year progresses.

MIG Contract	FY 2018	FY 2019	Total
Planning Budget	\$60,000	\$23,000	
Spent-to-Date (as of 07/11/17)	\$0		
Encumbrances	\$0		
Project Budget Adjustment	\$122,000		
Award of Proposed Contract	\$182,000	\$23,000	\$205,000
Budget Remaining (Proposed):	\$0	\$0	

Any contract amount remaining will be included when the project budget for next fiscal year (FY2018-19) is developed during the next Budget and Action Plan cycle.

The recommended action is not funded by Measure AA.

BOARD COMMITTEE REVIEW

Board Committee review is not required at this time. The full Board received an informational report about the Accessibility Plan Update from staff on March 11, 2015 (Attachment 3).

Following Board approval and execution of contract, an overview of ADA and the self-evaluation process will be presented to the full Board.

PUBLIC NOTICE

Public notice was provided as required by the Brown Act.

CEQA COMPLIANCE

This item is not a project subject to the California Environmental Quality Act.

NEXT STEPS

Following Board approval, the General Manager will direct staff to enter into a contract with MIG, Inc., to provide professional consultant services for the District-wide ADA Self-Evaluation and Transition Plan and commence work on the project. Additional funds will be proposed in the Three-Year Capital Improvement Program for FY2019-FY2021 to implement the recommended barrier removals over time.

Attachments:

1. District 1993 Accessibility Plan
2. Board Report R-93-08 regarding Plan for Compliance with the 1990 Americans with Disabilities Act
3. Board Informational Report on the Accessibility Plan Update, March 11, 2015

Responsible Department Head:

Jane Mark, AICP, Planning Manager

Prepared by:

Whitney Berry, Planner II

Contact person:

Whitney Berry, Planner II

Gretchen Lausten, Planner III

ACCESS PLAN FOR PERSONS WITH DISABILITIES
MIDPENINSULA REGIONAL OPEN SPACE DISTRICT
Adopted January 27, 1993

ACCESS PLAN FOR PERSONS WITH DISABILITIES MIDPENINSULA REGIONAL OPEN SPACE DISTRICT

TABLE OF CONTENTS

	SECTION	PAGE
I.	Introduction	1
II.	Description of the District's Basic Program	2
III.	Existing Access Improvements	3
IV.	Trail Access Classifications	9
V.	Access Objective and Policies	14
VI.	Planning and Prioritizing Access Improvements	16
VII.	Volunteer and Docent Programs	27
VIII.	Physical Barriers to be Corrected	30
IX.	Implementation of the Access Plan	32

Under Separate Cover:

- Appendix A ADA Assessment Notes - Skyline Area Preserves
- Appendix B ADA Assessment Notes - Foothills Area Preserves
- Appendix C Persons and Organizations Contacted

LIST OF FIGURES

	FIGURE	PAGE
Figure 1,	District Preserves Map	4
Figure 2,	Welcome to Open Space Map	5
Table 1,	Existing Access Improvements	6
Figure 3,	Trail Classification Criteria	13
Chart A,	Capital Improvements Plan, Trail Projects	20
Chart B,	Use and Management Plan Review Schedule	25

DRAFT
ACCESS PLAN FOR PERSONS WITH DISABILITIES
MIDPENINSULA REGIONAL OPEN SPACE DISTRICT

I. Introduction

The Americans with Disabilities Act of 1990 (ADA or "The Act") established that:

No qualified individual with a disability shall, by reason of that disability, be excluded from participation in or denied the benefits of services, programs, or activities of a public entity or subject to discrimination by such entity.

The Act became effective January 26, 1992 for park and recreation agencies. The law requires each agency to prepare a self-evaluation, to be completed by January 26, 1993. The self-evaluation is to cover all aspects of the District's facilities, programs and services, and identifies corrective measures where necessary. The self-evaluation must:

- Include evaluation of services, policies and practices (i.e. employment, programs, communications)
- Provide opportunity for public comment
- Be maintained and available to the public for 3 years
- Include a list of persons consulted, issues and problems examined/identified, and description of modifications made.

This Access Plan records the results of the District's self-evaluation for compliance with ADA, and presents the policies, process, and schedule whereby identified access improvement measures are to be implemented.

II. Description of the District's Basic Program

The District's basic policies and objectives focus on acquiring and preserving open space in its natural state. By policy alteration of the natural landscape is to be minimized in the provision necessary facilities. Facilities are to be at a minimum level to support public access and use.

The District owns and manages 23 preserves totaling 35,000 acres in the Santa Cruz Mountain Range and on the San Francisco bayfront. The District's lands, facilities, and programs are described in more detail in the Visitor's Guide.

The District provides facilities that support the following public programs and activities:

- Trail use for general exercise, nature appreciation and relaxation. This includes walking, hiking, running, bicycling, and horseback riding.
- Picnicking (limited formal facilities)
- Camping (pack-in camp only)
- Historic buildings and sites to visit, and related activities
- Specific nature study and interpretation through docent-led walks and presentations
- Volunteer participation in improvement and maintenance projects
- Academic and scientific research
- Special uses including hang gliding, special events and workshops

The District also operates Docent and Volunteer programs to facilitate public use and enjoyment of the open space, as detailed in Section VI of this document.

III. Existing Access Improvements

In addition to its administrative offices, facilities developed and maintained by the Midpeninsula Regional Open Space District to support public access are summarized on the District maps and table of the preserves shown in Figures 1 and 2.

The Midpeninsula Regional Open Space District has actively pursued the provision of access to facilities for persons with physical limitations. The District has completed a number of trail and site improvement projects specifically intended to provide such access, and ensures that any new buildings or facilities meet access standards. The District has implemented, or is implementing, the projects listed in Table 1 to provide or improve access to its facilities and programs.

MIDPENINSULA REGIONAL OPEN SPACE DISTRICT

Group A Preserves

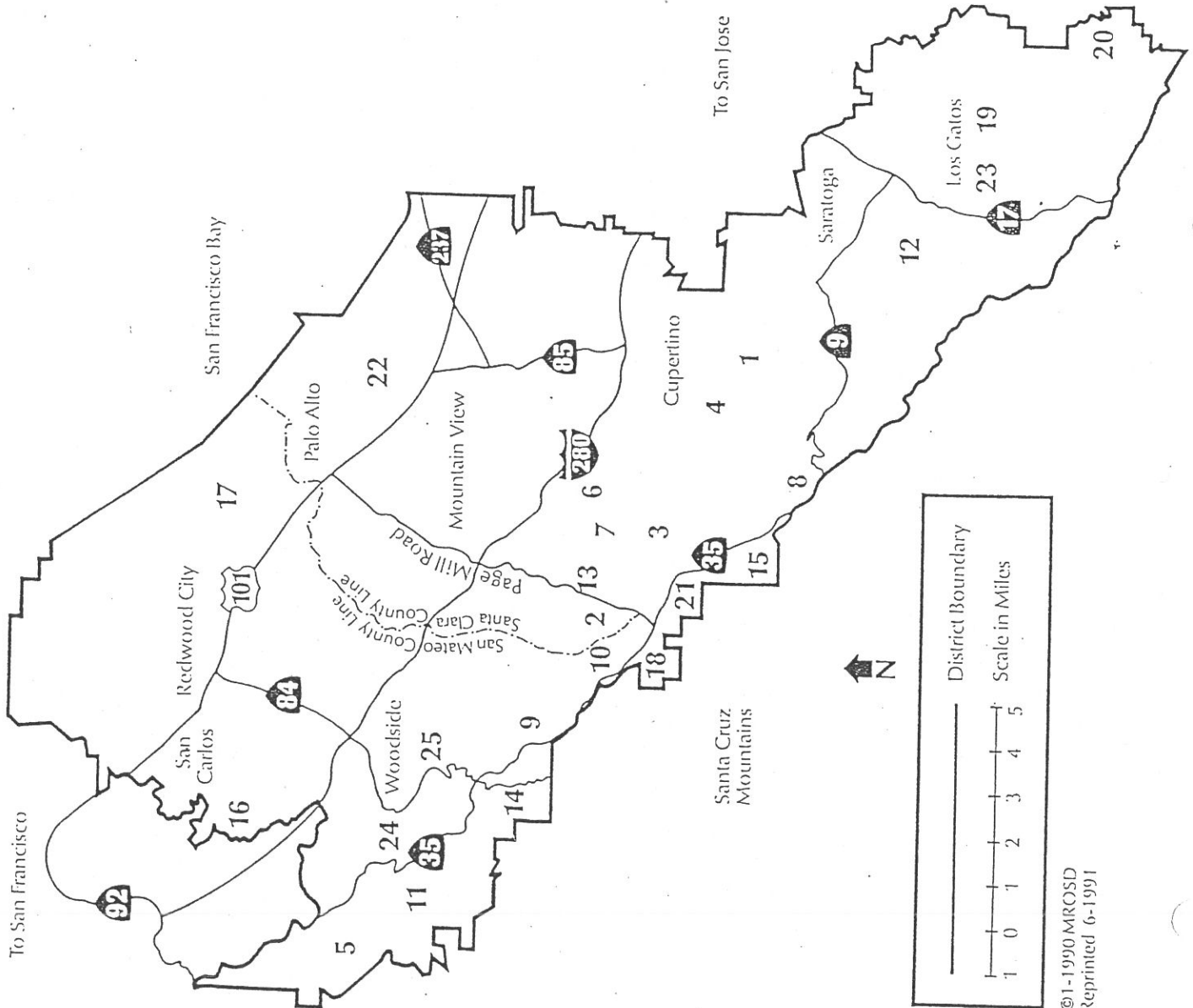
Fully Developed Sites

1. Fremont Older Open Space Preserve
2. Los Trancos Open Space Preserve
3. Monte Bello Open Space Preserve (Page Mill Road Area)
4. Monte Bello Open Space Preserve (Picchetti Ranch Area)
5. Purisima Creek Open Space Preserve
6. Rancho San Antonio Open Space Preserve
7. Rancho San Antonio Open Space Preserve (Duveneck Windmill Pasture Area)
8. Saratoga Gap Open Space Preserve
9. Windy Hill Open Space Preserve

Group B Preserves

Partially Developed Sites

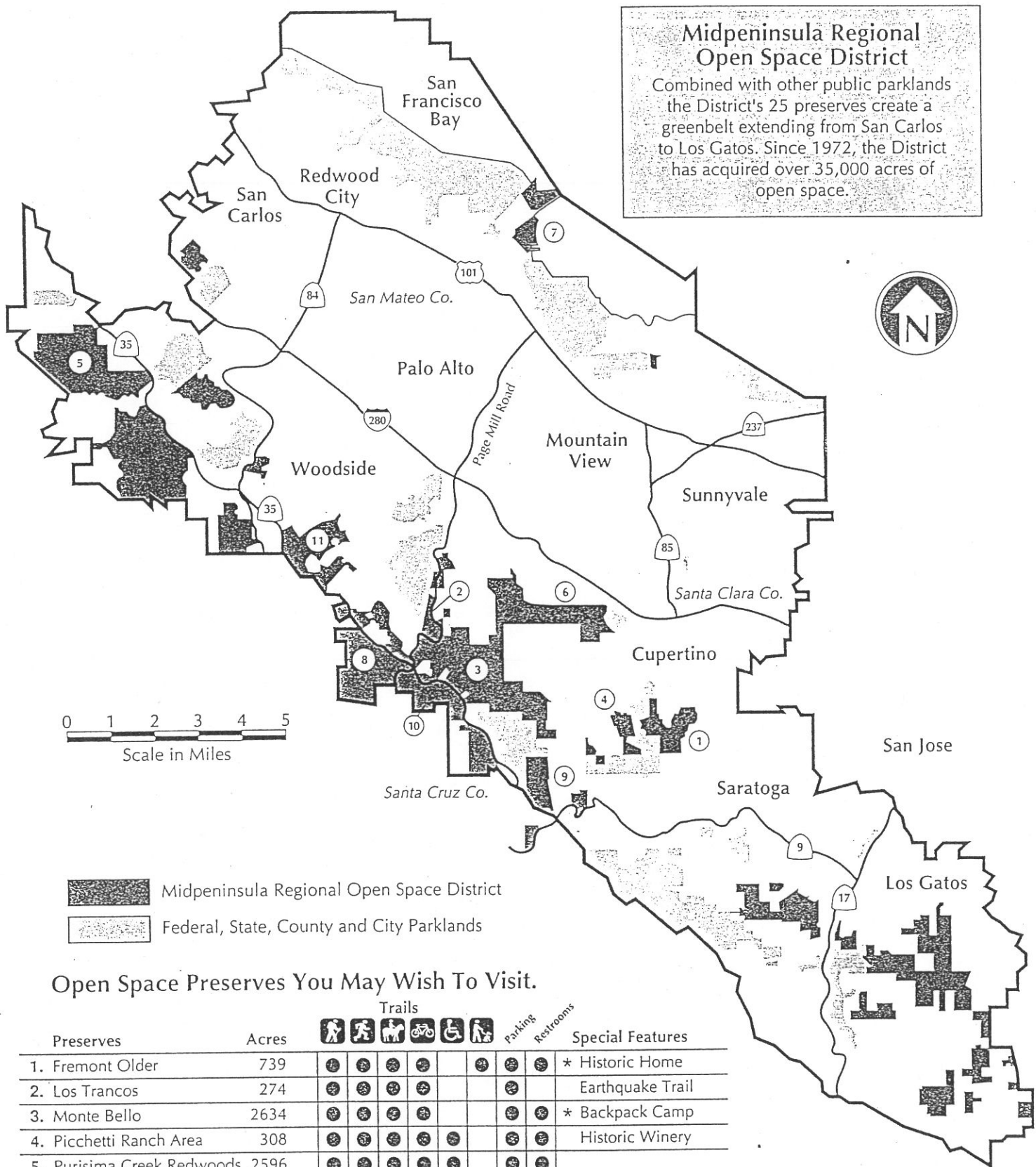
10. Coal Creek Open Space Preserve
11. El Corte De Madera Open Space Preserve
12. El Sereno Open Space Preserve
13. Foothills Open Space Preserve
14. La Honda Creek Open Space Preserve
15. Long Ridge Open Space Preserve
16. Pulgas Ridge Open Space Preserve
17. Ravenswood Open Space Preserve
18. Russian Ridge Open Space Preserve
19. Sierra Azul Open Space Preserve (Kennedy-Limekiln Area)
20. Sierra Azul Open Space Preserve (Mt. Umunhum Area)
21. Skyline Ridge Open Space Preserve
22. Stevens Creek Shoreline Nature Study Area
23. St. Joseph's Hill Open Space Preserve
24. Teague Hill Open Space Preserve
25. Thornewood Open Space Preserve



©1-1990 MROSD
Reprinted 6-1991

Welcome to Open Space

Attachment 1



Midpeninsula Regional Open Space District
Combined with other public parklands the District's 25 preserves create a greenbelt extending from San Carlos to Los Gatos. Since 1972, the District has acquired over 35,000 acres of open space.



0 1 2 3 4 5
Scale in Miles

- Midpeninsula Regional Open Space District
- Federal, State, County and City Parklands

Open Space Preserves You May Wish To Visit.

Preserves	Acres	Trails						Parking	Restrooms	Special Features
1. Fremont Older	739	●	●	●	●	●	●	●	●	* Historic Home
2. Los Trancos	274	●	●	●	●	●	●	●	●	Earthquake Trail
3. Monte Bello	2634	●	●	●	●	●	●	●	●	* Backpack Camp
4. Picchetti Ranch Area	308	●	●	●	●	●	●	●	●	Historic Winery
5. Purisima Creek Redwoods	2596	●	●	●	●	●	●	●	●	
6. Rancho San Antonio	972	●	●	●	●	●	●	●	●	Deer Hollow Farm
7. Ravenswood	471	●	●	●	●	●	●	●	●	Bay Trail
3. Russian Ridge	1547	●	●	●	●	●	●	●	●	
9. Saratoga Gap	614	●	●	●	●	●	●	●	●	
10. Skyline Ridge	1258	●	●	●	●	●	●	●	●	Alpine Pond
11. Windy Hill	1132	●	●	●	●	●	●	●	●	* Model Soaring

* Permits Required

To obtain
a Visitor's Guide
for information
on all preserves
call the District office
(415) 949-5500.

Table 1. Existing Access Improvements

Preserve (Area)	Parking	# Accessible Spaces	Restrooms	# Accessible	Level 1 Access Trails (See Pg. 10)	Trailside Amenities	Special Features	Comments
1. SKYLINE RIDGE Alpine Pond	0 (See Comments)	0	0	0	1.0 mi.	Benches @ Alpine Pond	Nature Center (undev.) & floating pier part of Ridge Trail	Accessible from Russian Ridge Parking - see #14
Horseshoe Lake Area	67	12	2	2	0.25 mi.	Benches @ Horseshoe Lake		3 parking areas, one includes equestrian parking
2. MONTE BELLO	45	0	2	1		Bench @ vista point	Interpretive brochure backpack camp	1 restroom @ Black Mtn. backpack camp (not accessible)
3. RANCHO SAN ANTONIO	10	0	1	1	0.5 mi.		Deer Hollow Farm, 10 picnic tables	restroom @ Deer Hollow Farm lease area. Trails may have uneven surface.
4. PURISIMA CREEK REDWOODS Whittemore Gulch Trailhead	20	1	1	0			Part of Ridge Trail	
Redwood Trailhead	8	3	1	1	0.25 mi.	Bench (1), Picnic Tables (2)		
Higgins-Purisima Trailhead	10	0	2	2				Temp. restrooms are accessible

Preserve (Area)	Parking	# Accessible Spaces	Restrooms	# Accessible	Level 1 Access Trails (See Pg. 10)	Trailside Amenities	Special Features	Comments
5. WINDY HILL	10	0	0	0		Benches	1 Accessible picnic table 2 regular tables Part of Ridge Trail	
6. ST. JOSEPH'S HILL	0	0	0	0				No developed parking
7. RAVENSWOOD	12	1	0	0	1.5 mi.		2 Accessible observation decks w/ benches	
8. EL CORTE DE MADERA CREEK	0	0	0	0				No developed parking
9. PICCHETTI RANCH AREA	35	0	2	2			Winetasting w/ picnic area, wheelchair lift at winery	
10. SARATOGA GAP	0	0	0	0				No developed parking
11. LOS TRANCOS	25	0	0	0			Interpretive Brochure	
12. LONG RIDGE	0	0	0	0			Part of Ridge Trail	No developed parking
13. PULGAS RIDGE	0	0	0	0	0.4 mi.			No developed parking
14. RUSSIAN RIDGE	45	2	1	1			Dedicated Ridge Trail	Trailhead to Alpine Pond Trail
15. LA HONDA CREEK	10	0	0	0				Permit parking for 10 vehicles, no designated HC space

Preserve (Area)	Parking	# Accessible Spaces	Restrooms	# Accessible	Level 1 Access Trails (See Pg. 10)	Trailside Amenities	Special Features	Comments
16. TEAGUE HILL	0	0	0	0				Undeveloped
17. FREMONT OLDER	10	0	1	0			Annual house tour	
18. KENNEDY ROAD AREA - SIERRA AZUL	0	0	0	0				No developed parking
19. WINDMILL PASTURE AREA	0	0	0	0				No developed parking
20. STEVENS CREEK SHORELINE NATURE STUDY AREA	0	0	0	0	0.25 mi.			Trail may have uneven surface
21. COAL CREEK	0	0	0	0				No developed parking
22. EL SERENO	0	0	0	0				No developed parking
23. FOOTHILLS	0	0	0	0				Undeveloped
24. THORNEWOOD	10	1	0	0			Annual house tours, permit picnic area	
25. MT. UMUNHUM AREA - SIERRA AZUL	0	0	0	0				No developed parking
26. CATHEDRAL OAKS - SIERRA AZUL	0	0	0	0				Undeveloped

IV. Trail Access Classifications

Trails are improvements that are most directly related to accessibility of the open space lands. These trail classes are intended to guide the District's evaluation of its existing trails, provide planning and construction information for new and improved trails, and provide information for potential trail users. These classifications and criteria are preliminary and may be subject to amendment as the District gains experience in their use and additional public input.

The criteria presented in this section are the minimum requirements for trails to be classified according to these levels. Only Level 1 trails are intended to meet whole access standards. Level 2 and 3 trails have a steeper grade, a rougher surface and fewer benches, pullouts, etc. than Level 1, but may still be accessible for persons with physical limitations, depending on their abilities and inclinations. Level 3 trails, with a 10% maximum grade, are the steepest trails that the District will construct based on its current overall trail construction standards. However, based on past construction practices and roads and trails inherited through land purchase, many existing trails do not meet this standard.

Visitors who are in doubt about what level of trail they want to attempt, or need help in interpreting these classifications, are encouraged to start with the level 1 trails, and/or to contact District staff for more information and clarification.

Level 1 Trails

General

description: These trails are intended to be relatively smooth, gently sloped, generously wide, with a firm surface for traction and low rolling resistance. Pullouts, rest areas and edge treatments are intended to make the trails as safe and comfortable to use as possible in a natural open space setting.

User Guidelines: Level 1 trails are intended to accommodate the greatest variety of physical abilities, including wheelchairs. Level 1 trails will not be open to use by horses or bicycles, due to impact on the trail surface and possible conflict with other users.

Minimum width: 4 feet

Maximum grade: 5%

Maximum cross-slope: 2%

Surface: Smooth, stable, all-weather material, texture indicating the edge of the

path. Typical surface of compacted decomposed granite fines. Some trail surface materials may incorporate a cement mixture for improved stability.

- Rest areas: Minimum 4' by 6', outside of the pathway, provided at intervals of 200 to 300 feet, some of which shall include benches.
- Edge treatment: Railings will be provided across bridges, around decks, floating platforms and other structures and at potentially hazardous natural drop-offs. Otherwise, curbs or railings will not typically be provided, in keeping with the District's objective of maintaining the site in as natural condition as possible. Curbs or borders will be provided at the edge of the trail where topography or vegetation does not indicate the edge.
- Level 2 Trails**
- General description: Level 2 trails vary from Level 1 trails in two significant ways. The maximum grade, may be slightly steeper; and the surface is typically be composed of native soil, which tends to be rougher and less even.
- User Guidelines: Level 2 trail users may be persons who seek, or are willing to accept, more exertion and interaction with the terrain as part of their trail experience. Bicycles and horses may be allowed on trails designated as Level 2 access. Level 2 trails may include fire and maintenance access roads that the District has inherited with the purchase of property.
- Minimum width: 4 feet
- Maximum grade: 8%
- Maximum cross-slope: 2%
- Surface: Compacted base rock, granite fines or earth. The trail surface may include irregularities that offer a bumpy ride for wheeled conveyances, but no obstacles.
- Rest areas: Rest stops or pullouts will be provided at irregular intervals, and benches may or may not be provided. Informal resting and sitting spots are often afforded by banks, rocks, and logs, and turnout space is afforded at switchbacks and clearings.
- Edge treatment: Curbs or borders will not typically be provided at the trail edge. Railings will be provided at potentially hazardous locations.

Level 3 Trails

General description:	These trails may be steeper and narrower than Level 2 trails, in response to the constraints of rough terrain. (Any new trails constructed by the District are at least 4 feet wide and no more than 10% grade, however encroaching bank slough-off and vegetation may reduce the available width to 3 feet).
User guidelines:	These trails are more challenging than Level 2 appropriate for persons who seek or are willing to accept some strenuous physical activity. Like Level 2, they may be open to multiple use, based on a case by case determination.
Minimum width:	3 feet
Maximum grade:	10%
Maximum cross-slope:	2%
Surface:	The trail surface is typically compacted earth, which may be uneven due to roots, rocks and trail use.
Rest areas:	Formal rest stops or pull-outs with benches are not typically provided, although informal resting and sitting spots are often afforded by banks, rocks, and logs, and turnout space is afforded at switchbacks and clearings.
Edge treatment:	Edges are not formally marked or bordered.

Non-Classified Trails

General description:	Initially, all trails that have not been inventoried and classified according to these standards will be identified non-classified. As the inventory is completed, trails that will remain non-classified will typically be fire protection and access roads and trails the District has inherited through land purchase. They may not meet the minimum access standards due to steep grades, cross-slope, width or exposure to hazards.
----------------------	------------------------------------------------------------------------------------------------------------------------------------------------------------------------------------------------------------------------------------------------------------------------------------------------------------------------------------------------------------------------------------------------------------------------------------------

User**guidelines:**

May be open to multiple use, or may be limited to certain uses on a case by case basis. Users must judge for themselves whether to use these trails based on their own research, interests and abilities.

Trail Inventory

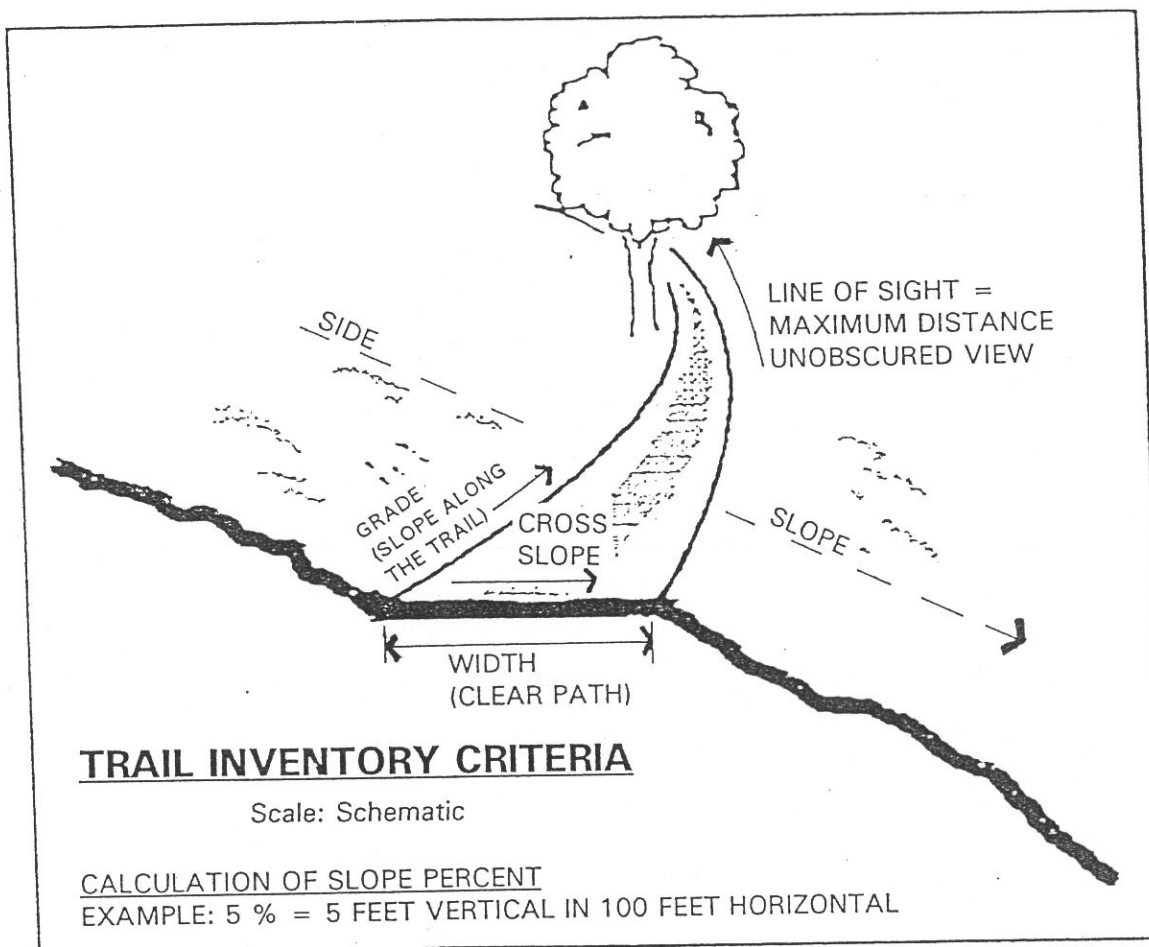
In order to classify trails and provide information for potential trail users on the conditions they will encounter when attempting specific trails, the District will inventory and record data regarding its existing trails. This information will be published in a form that is easily interpreted by the public. The data will be collected by taking measurements at regular intervals along the trails, while continually observing and noting any significant changes in condition. The classification information to be collected is illustrated in Figure 2. The following trail conditions will be inventoried:

Grade:	0 - 5%, 5% - 8%, 8% - 10%, 10% - 15%, 15% +
Width:	<4', 4' - 6', 6' + (usually roads)
Cross-slope:	0 - 2%, 2% +
Side Slope:	0 - 10%, 10% - 30%, 30% +
Line of Sight:	<50', 50' - 75', 75' - 100', 100' +
Surface:	Indicate material, compacted, rocky, loose, wet, smooth, rough
Rest Areas:	Indicate turnout, bench
Multiple use:	Indicate permitted trail use, including running, bicycles, horses, dogs; note areas particularly popular with certain user groups where applicable.
Special Interest:	Views, natural and historical interest

Completion of the trail inventory will be the responsibility of District staff, based on training and review to be provided by management and supervisors. The maximum time frame for inventory of any specific site will follow the Site Emphasis Plan Schedule for preparation and update of preserve use and management plans. Opportunities to inventory trails earlier than the scheduled Site Emphasis Plan update will include instances of trail construction projects in the area, and the general availability of District staff to work on the inventory in lieu of other duties.

The trail condition and use classification will be incorporated into the site information for the individual preserves. The information may be presented by including symbols or notes on the preserve maps, through written descriptions in the preserve brochures, or through tables of conditions corresponding to topographic profiles. Site maps and brochures are reviewed in draft form by the public, allowing the opportunity for refinements prior to publication.

The diagram presented below illustrates some of the terms used in the classification.



V. Access Goal and Policies

The following policies represent the District's position and plan for providing access to persons with disabilities.

Goal

It is the District's goal to provide access to its activities and programs, including employment, and to its open space preserves, facilities, and trails, to all persons, regardless of physical limitations, consistent with the constraints of the natural landscape and the District's resources.

Policies

- 1) **Steering Committee.** The District will form an Access Steering Committee, composed of interested constituents. The committee will participate in the preparation and implementation of plans to improve access for persons with disabilities. The committee will also facilitate communication with people who are interested in this issue.
- 2) **Access Plan.** Once adopted by the Board of Directors, this document shall comprise the official District policy and procedure with respect to provision of access to persons with disabilities, and shall be implemented as established herein, or as subsequently amended.
- 3) **Access Level Classifications.** The District will use the three levels of access outlined in Section IV of this document as guidelines in evaluating, designing, constructing, improving and providing information about its sites and trails. These access classifications may be amended based on further knowledge or public comment.
- 4) **Access Improvement Process and Priorities.** The planning and prioritizing of access improvements to accommodate persons with disabilities shall follow the established Relative Site Emphasis and Preserve Use and Management Plan procedures, as outlined in Section VI of this document. Commitment to access improvements shall be on the basis of specific measures or projects rather than a standard percentage of budget or proportion of construction.
- 5) **Amendment of Site Emphasis Criteria.** Paragraph E, Accessibility to the Public, contained in addendum number of the District's adopted Site Emphasis Policy, shall be amended to add the following criterion: "Does the site offer opportunities to provide access to persons with disabilities?"
- 6) **Accessible Buildings and Sites.** All District-owned buildings and other structures which are used by the public shall be constructed or renovated to meet current state and federal standards for access to persons with disabilities. Designated accessible parking areas will be provided at all sites and trailheads where formal parking is provided. Accessible public toilets will be provided at all locations where public toilets are provided.

- 7) **Removal of Physical Barriers.** The District will remove or correct the physical barriers identified in Section VII of this plan before January 26, 1995.
- 8) **Public Communication Measures.** The District will undertake the following specific measures, and other general outreach and information measures to make the public aware of the access opportunities presented by the District's lands:
 - a. The District will implement the measures outlined in Section VII, Docent and Volunteer Programs.
 - b. The District will publish and regularly update information on currently accessible trails and sites.
 - c. The District will inventory, classify and publish information about the accessibility of its trails in updating its general maps and brochures, as outlined in Section VIII of this Plan.
 - d. The District will provide the means to comment on access conditions at specific District sites by posting the communication contact name, number and address at major staging areas. Typically the Planning Manager will be the primary contact on this subject.
 - e. The District will endeavor to inform and educate the public about access opportunities on its trails and sites, and in its programs, through the media and in general public affairs activities.

VI. Planning and Prioritizing Access Improvements

The prioritizing and scheduling of access improvements will be based on the District's adopted process for scheduling the inventory, planning and improvement of sites. Many of the District's existing trails are barrier free and may be categorized as type 2 or 3, or even type 1, as the inventory progresses. The District is a land acquisition and preservation-oriented organization. The planning and improvement of sites may follow well behind the acquisition of sites. Planning efforts are carefully organized and scheduled to see that limited budget resources are expended in the most efficient and beneficial way, and to respond to diverse public and individual requests for use and improvement of the land.

Site Review and Planning Process

A process has been designed and adopted by the District to ensure that site planning considers all the issues and conditions at each specific site, as well as overall District and public objectives. Numerous projects to provide access to trails and sites to persons with disabilities have been incorporated into this process, and any future plans and projects are to be considered in the same context.

The Preserve Use and Management Plan is the basis for any sort of physical change or improvement of any District land, and for decisions on any proposed use of the land. This plan will include information about the resources and physical conditions on the site, public input regarding desired uses and improvements, and development and review at staff, public, and District Board levels of these opportunities and constraints and the planning proposals.

Until a site has gone through this process, no parking, trails or other significant public improvement or use will be considered. Change is usually gradual even after formulation and adoption of the use and management plan. Existing uses and conditions are typically maintained. Proposed uses or improvements that were not originally identified in an adopted Use and Management Plan will only be considered in the context of review or amendment of the Use and Management Plan.

The schedule for preparation and review of Use and Management Plans is updated annually through review of the Relative Site Emphasis Plan, which includes a five-year Capital Improvement Plan. This review generally takes place in December and January in preparation for the District's budget year, which begins April first. The Relative Site Emphasis Plan is a way of prioritizing both short term and long term planning and development projects for all District sites. The Capital Improvement Plan (CIP) corresponds to the schedule for preparation of Use and Management Plans and is part of the District's overall budgeting process. The CIP typically identifies significant planning and construction projects within the next five years, including trails. The capital improvement program is the best indication of what the District is planning to do to make its trails and sites accessible to people with disabilities. Due to uncertainty created by the current state budget crisis, the FY 93/94 CIP shows only a two year period and a "beyond" category.

Chart A, presented in the following pages, presents the trail projects currently in the Capital Improvement Plan, and highlighting those that are Level 1, or full access.

Chart B, presents the schedule for preparation and update of preserve use and management plans, which comprises the general schedule for inventory of existing trails on a site basis and for consideration of new projects.

Budget and Schedule for Access Improvements

Chart A indicates that the projects budgeted by the District for new or improved Level 1/ full access trails in the FY 93/94 version of the plan comprise 33 % of the total planned trail project budget for the five year period. The District also intends to spend \$22,500 over the next two years on detailed, computer-generated mapboard signs. These will be located at trailheads to help visitors, including persons with disabilities, to use the trail system.

Due to the current state budget deficit, there is a likelihood that the District's revenues will be significantly reduced. The timing and impact of such cuts is unknown at this time. The District Board has taken a conservative approach to spending in anticipation of the cuts. The current plans reflect an extension of the schedule for acquisition and site development compared to the 92/93 plans.

Public participation is encouraged during the review and adoption process for the budget, which typically takes place between January and March, and in any subsequent amendments in response to new budget information.

Site Emphasis Criteria

The adopted general criteria for making general site emphasis and site plan decisions are presented below. With the adoption of this Access Plan, the specific criterion of providing access for persons with disabilities will be added to these basic criteria, which are contained in Addendum number 1 of the District Site Emphasis Policy:

A. Public Interest

Does the public express a desire, either directly or indirectly, to utilize the site? This may be evident by existing use which occurs regardless of land status and/or by interest communicated to staff or Board.

B. Geographical Location

Does or will the site receive high levels of use and pressure for recreational development due to its close proximity to the urban area?

C. Regional Significance

How significant is the site in relationship to other existing public lands, and does it serve as an important link (providing trail connections) between or leading to other facilities?

D. Attractiveness of Natural or Developed Features

Are there features on the site (such as a unique landscape, historical building, parking areas, trails, etc.) which are of particular interest and attractiveness or usefulness to the public?

E. Accessibility to Public

Can the District's general public (not only site neighbors) gain access to the property from public roads or adjacent public lands or if not, is there the potential for improving this access (parking) on District or adjacent public lands? (As indicated on page 14, the criterion "Does the site offer opportunities to provide access for persons with disabilities?" will be added).

F. Lack of Existing Open Space/Parklands for Public Use

Are there no other nearby open space recreational experiences (including existing developed preserves) accessible to the public on a regional basis? Such facilities if accessible and minimally developed would possibly alleviate the need for development of the site in the near future.

G. Geographical Distribution

How well does the site serve as a regional facility, and will its development better distribute open space opportunities throughout the District?

H. Manageability of Site

Can the site be readily managed presently and in the future if further development were to occur? This could be related to the number of access points and the adequacy of patrol routes, presence of an agricultural tenant, a renter, a Ranger residence, or other lease arrangement.

I. Costs Measured Against Benefits

To what extent do the benefits to the public exceed the costs associated with development and management of the site? Some sites will tend to yield great benefits at little costs.

J. Physical and Psychological Carrying Capacity

Is the site capable of providing open space experiences for large numbers of visitors without degrading the resource or psychologically reducing the quality of the experience? Is there the potential for expanding facilities such as trails without exceeding the carrying capacity?

CHART A - CAPITAL IMPROVEMENT PLAN

TRAIL CONSTRUCTION & IMPROVEMENT PROJECTS (Revised 1/27/9

- Level 1, Trail Projects

- Denotes projects added since last review
PS - Planning, engineering & project supervision
CC - Construction Contract for public bid

Access Levels -
1 - Fully Accessible

? - Unknown Until Inventory & Design

Int. - Internal to other existing trails which may
require upgrade to provide access

2 - Level 2 Access

3 - Level 3 Access

Preserves Trail Projects	U&M Adopted	Access Level	Preliminary Two Year CIP		Outside Funding	Explanation and Notes
			1993	1994		
1. Skyline Ridge						
Ridge Trail to SE (LWCF)	Yes	2				
Bullis Bypass Trail	Yes	? Int.			Obtained	
Lambert Creek Trail	Yes	? Int.			Possible	
					Possible	
2. Monte Bello						
Mapboard Trailhead Sign	No		4000			Computer generated map and regulation sign
Gold Mine Trail	Yes	? Int.				
Stevens Creek Bridge	Yes	? Int.				
Disc Line Trail	Yes	? Int.	10000			
Vista Trail (Full Access)	Yes			10000	Obtained	Project advanced after 1st reading Site Emphasis
					Possible	Upgrade will comply with District ADA Plan
3. Rancho San Antonio						
Mapboard Trailhead Sign	No					
Ridgeline Trail Realignment	No		2500	4000		Computer generated map and regulation sign
Creekside Trail (Full Access)	Yes	1			Possible	
				15000		
4. Purisima Creek						
Mapboard Trailhead Sign	No		4000		Possible	Computer generated map and regulation sign
Purisima Trail (Full Access)	Yes	1			Possible	
				25000		

CHART A - CAPITAL IMPROVEMENT PLAN
TRAIL CONSTRUCTION & IMPROVEMENT PROJECTS (Revised 1/27/9

<i>Italics</i>	- Level 1, Trail Projects - Denotes projects added since last review PS - Planning, engineering & project supervision CC - Construction Contract for public bid
Access Levels -	1 - Fully Accessible ? - Unknown Until Inventory & Design Int. - Internal to other existing trails which may require upgrade to provide access 2 - Level 2 Access 3 - Level 3 Access

Preserves Trail Projects	U&M Adopted	Access Level	Preliminary Two Year CIP		Beyond Funding	Explanation and Notes
			1993	1994		
5. Windy Hill <i>Mapboard Trailhead Sign</i> Corte Madera Trails <i>Sausal Trail (Full Access)</i> Meadow Trail Bozzo/Midlevel Trail	No Yes Yes Yes Yes	3 1 ? Int. ? Int.	4000 10000		Possible Possible Possible Possible	Computer generated map and regulation sign Realignments & restoration (Trail Center project)
6. St. Joseph's Hill Trail to Hilltop <i>Jones Trail Realignment</i>	Yes No	? Int. ?		10000	Possible Possible	Cal Trans mitigation grant may advance to '94 Under negotiation; includes relocating fence
7. Ravenswood <i>Trail to Palo Alto (Full Access)</i>	Yes	1		82500	Possible	Pending toxic clean-up & easements obtained
8. El Corte de Madera <i>Ridge Trail to La Honda</i>	No	3 Int.		15000	Possible	
9. Picchetti Ranch Area Trail above Pond Trail to Cosigny	Yes Yes	? Int. ? Int.	15000 10000		Possible Possible	Coincide w/County Master Plan development
10. Saratoga Gap						

CHART A - CAPITAL IMPROVEMENT PLAN
TRAIL CONSTRUCTION & IMPROVEMENT PROJECTS (Revised 1/27/9)

- Level 1, Trail Projects
- Denotes projects added since last review
PS - Planning, engineering & project supervision
CC - Construction Contract for public bid
Access Levels -
1 - Fully Accessible
? - Unknown Until Inventory & Design
Int - Internal to other existing trails which may require upgrade to provide access
2 - Level 2 Access
3 - Level 3 Access

Preserves Trail Projects	U&M Adopted	Access Level	Preliminary Two Year CIP		Beyond	Outside Funding	Explanation and Notes
			1993	1994			
11. Los Trancos Mapboard Trailhead Sign Fault Trail Improvements	No Yes	3 ?	4000 3500				Computer generated map and regulation sign Realignments and station repairs
12. Long Ridge Trail to Skyline Ridge Jikoji Bypass Trail	Yes No	3 ? Int.		15000	10000	Possible	Includes proposed easement trail, gates, etc.
13. Pulgas Ridge Cordillera Trail (Full Access) South Canyon Trail Edmonds Trailhead	Yes Yes Yes	1 ? ?	50000 CC		20000 10000	Obtained Possible Possible	1993 grant deadline; grant reimburses \$28,300 Should be combined with parking lot project
14. Russian Ridge Mapboard Trailhead Sign Vista Trail (Prop 70) Loop Trails (LWCF) Nature Trail (Prop 70) Ridge Trail (Norton)	Yes Yes Yes Yes No	3 ? Int. ? Int. ? Int.	48000 CC	26000 CC 10000		Obtained Obtained Possible	Computer generated map and regulation sign 1994 grant deadline; grant reimburses \$24,000 1995 grant deadline; grant reimburses \$12,000
15. La Honda Creek Dyer Trail to PGE Ridge Trail	Yes Yes	? ?			5000 35000	Possible Possible	

CHART A - CAPITAL IMPROVEMENT PLAN
TRAIL CONSTRUCTION & IMPROVEMENT PROJECTS (Revised 1/27/9)

- Level 1, Trail Projects
- Denotes projects added since last review
PS - Planning, engineering & project supervision
CC - Construction Contract for public bid
Access Levels -
1 - Fully Accessible
? - Unknown Until Inventory & Design
Int. - Internal to other existing trails which may
require upgrade to provide access
2 - Level 2 Access
3 - Level 3 Access

Preserves Trail Projects	U&M Adopted	Access Level	Preliminary Two Year CIP 1993	1994	Beyond	Outside Funding	Explanation and Notes
16. Teague Hill							
17. Fremont Older <i>Mapboard Trailhead Sign</i> Seven Springs Road <i>Trail Realignments</i>	Yes Yes Yes	? Int. ? ?	2500	2500	20000	Possible	Expenditure not previously scheduled Along Coyote Ridge, former Garrod trails
18. Kennedy Road Area							
19. Windmill Pasture Area Upper Black Mtn Trail	No	? Int.			25000	Possible	
20. Stevens Creek Shoreline							
21. Coal Creek Vista Point Trail Melville Trail	Yes Yes	? Int. 3			10000 10000	Possible Possible	
22. El Sereno							

CHART A - CAPITAL IMPROVEMENT PLAN

TRAIL CONSTRUCTION & IMPROVEMENT PROJECTS (Revised 1/27/9

- Level 1, Trail Projects

- Denotes projects added since last review

PS - Planning, engineering & project supervision

CC - Construction Contract for public bid

Access Levels - 1 - Fully Accessible

? - Unknown Until Inventory & Design

Int - Internal to other existing trails which may require upgrade to provide access

2 - Level 2 Access

3 - Level 3 Access

Preserves Trail Projects	U&M Adopted	Access Level	Preliminary Two Year CIP		Beyond Funding	Explanation and Notes
			1993	1994		
23. Foothills Foothills Park Trail	No	3			13000	Possible Coordinating with City of Palo Alto
24. Thornewood Upper Bypass Trail	Yes	?			15000	Possible
25. Mt. Umunhum Area						
26. Cathedral Oaks Area						
MAPBOARD SIGN DOLLARS			14500	8000		
TRAIL DOLLARS			114000	98500	513500	
LEVEL 1 TRAIL DOLLARS			50000	10000	180500	
% LEVEL 1 TRAIL SPENDING			44%	10%	35%	
TOTAL MAPBOARD SIGN DOLLARS			22500			
TOTAL PLANNED TRAIL DOLLARS			726000			
LEVEL 1 TRAIL DOLLARS			240500			
% LEVEL 1 TRAIL SPENDING			33%			

CHART B - RELATIVE ORDER OF SITES / TARGET USE AND MANAGMENT REVIEW SCHEDULE

Attachment 1
DATE: 1/6/93

Relative Order of Sites	Last Review	Five Year Use and Management Plan Target Review Schedule																			
		1993				1994				1995				1996				1997			
		1st Qtr	2nd Qtr	3rd Qtr	4th Qtr	1st Qtr	2nd Qtr	3rd Qtr	4th Qtr	1st Qtr	2nd Qtr	3rd Qtr	4th Qtr	1st Qtr	2nd Qtr	3rd Qtr	4th Qtr	1st Qtr	2nd Qtr	3rd Qtr	4th Qtr
* 1. Skyline Ridge	05/92		☑																		
2. Monte Bello	12/89						■														
3. Rancho San Antonio	04/90						☑														
* 4. Purisima Creek	02/89			☑																	
5. Windy Hill	11/88										■										
* 6. St. Joseph's Hill	09/87		■																		
7. Ravenswood	04/90																				■
8. El Corte de Madera	09/89									■											
9. Picchetti Ranch Area	01/88																■				
10. Saratoga Gap	03/89																	■			
11. Los Trancos	07/87														■						
12. Long Ridge	07/90					☑															
13. Pulgas Ridge	08/87						■														
14. Russian Ridge	02/87															■					
15. La Honda Creek	03/88																		■		
16. Teague Hill													☐								
* 17. Fremont Older	11/90				☑																
18. Kennedy Road Area Sierra Azul	07/89										■										
19. Windmill Pasture Area Rancho San Antonio	04/90															■					
20. Stevens Creek	05/90																		■		
21. Coal Creek	10/87	■																			
22. El Sereno	11/87								☐												
23. Foothills	02/90																				
24. Thornewood	11/87																				■
25. Mt. Umunhum Area Sierra Azul	07/89												☐								
26. Cathedral Oaks Sierra Azul														☐							

■ Comprehensive Use and Management Plan
☐ Interim Use and Management Plan
☑ Amendment for Trail Use Element Only
* Public Workshop to be held in 1993

CHART B - RELATIVE ORDER OF SITES / TARGET USE AND MANAGEMENT REVIEW SCHEDULE

DATE: 1/6/93

Relative Order of Sites	Last Review	Five Year Use and Management Plan Target Review Schedule																			
		1993				1994				1995				1996				1997			
		1st Qtr	2nd Qtr	3rd Qtr	4th Qtr	1st Qtr	2nd Qtr	3rd Qtr	4th Qtr	1st Qtr	2nd Qtr	3rd Qtr	4th Qtr	1st Qtr	2nd Qtr	3rd Qtr	4th Qtr	1st Qtr	2nd Qtr	3rd Qtr	4th Qtr
* 1. Skyline Ridge	05/92		☑																		
2. Monte Bello	12/89							■													
3. Rancho San Antonio	04/90						☑														
* 4. Purisima Creek	02/89			☑																	
5. Windy Hill	11/88											■									
* 6. St. Joseph's Hill	09/87		■																		
7. Ravenswood	04/90																				
8. El Corte de Madera	09/89									■											■
9. Picchetti Ranch Area	01/88																■				
10. Saratoga Gap	03/89																	■			
11. Los Trancos	07/87														■						
12. Long Ridge	07/90					☑															
13. Pulgas Ridge	08/87							■													
14. Russian Ridge	02/87															■					
15. La Honda Creek	03/88																			■	
16. Teague Hill													☐								
* 17. Fremont Older	11/90			☑																	
18. Kennedy Road Area Sierra Azul	07/89									■											
19. Windmill Pasture Area Rancho San Antonio	04/90														■						
20. Stevens Creek	05/90																			■	
21. Coal Creek	10/87	■																			
22. El Sereno	11/87								☐												
23. Foothills	02/90																				
24. Thornewood	11/87																				
25. Mt. Umunhum Area Sierra Azul	07/89											☐								■	
26. Cathedral Oaks Sierra Azul													☐								

Comprehensive Use and Management Plan
Interim Use and Management PlanAmendment for Trail Use Element Only
* Public Workshop to be held in 1993

VII. Volunteer and Docent Programs

Background

The District has operated a Docent Program, supported by a staff Docent Coordinator, since soon after the District's formation in 1972. The District has operated a Volunteer Program, supported by a half-time staff Volunteer Coordinator, since 1986. In addition to the paid staff, the District provides a modest budget for materials and expenses of the programs. All other participation is on an unpaid volunteer basis.

Program Objectives

The basic objectives of the Docent Program are to help educate the public about the natural history and resources of the District's lands; to generate public understanding and support for the District's open space preservation mission; to involve the public in the District's activities; and to enhance the visitor experience.

The basic objectives of the Volunteer Program are similar to those of the Docent Program; to generate public understanding and support for the District's open space preservation mission; to involve the public in the District's activities; and to conserve the District's financial resources by using volunteers to assist paid staff in completing maintenance and improvement projects.

Docent Program Description

The Docent Program typically includes from 50 to 80 volunteer docents. Twice per year, in the Spring and the Fall, the District provides docent training in natural history. New docents may start in either Spring or the Fall, and are expected to attend both training sessions. There are several optional training sessions offered each year in a variety of subjects. Informal docent activity planning meetings and social events are held throughout the year.

Docent activities are focused on organizing and leading walks and hikes in the open space preserves, with interpretation of natural resources and human history provided by the docents. Most of the ideas for the walks, hikes, and talks come from the docents themselves. They vary widely in subject, location, length and difficulty. Any group of 10 or more persons may request a special docent-led hike or talk, which may be custom-tailored to their needs and interests.

Public awareness of the Docent Program is provided through general District publications such as the quarterly general newsletter, the annual report, the Visitor Guide and site-specific maps and brochures. Direct access and participation is provided by a monthly "Walks and Hikes" newsletter that is distributed to a large general mailing list and sent to local newspapers for publication. The District has a small Nature Center building at Alpine Pond in the Skyline Preserve which is used for research and interpretive activities.

Volunteer Program Description

The Volunteer Program operates on a "drop in" basis. There is no required training or membership. The Volunteer Coordinator organizes at least one event or project per month, consisting of a basic resource restoration, maintenance or construction project in the District preserves. Interested members of the public can work alongside District staff to improve or protect natural resources or public access facilities. The District provides tools, equipment, basic supervision, and usually refreshments, for these one-day projects. A Volunteer Newsletter, published quarterly, informs the public of upcoming projects, and reports on the participation and progress on past projects. Like the Docent Program, public awareness of the Volunteer program is promoted by general District publications.

In addition to specific projects, the Volunteer Coordinator arranges for the use of public volunteers and community service assignees in administrative office tasks such as filing and mailing. The District also makes use of adult and juvenile justice system work release programs and the California Conservation Corps to complete maintenance and construction projects. This assistance may or may not be combined with public volunteer efforts.

Measures to Improve Program Access for Persons with Disabilities

The accessibility of the Docent and Volunteer programs is facilitated because they are flexible in format and content, and easily adapted to the specific needs of the participants, including the Docents themselves. Also, because they are based on public participation, any group with special interests is free to design and carry out their own program with the help of District staff and resources, or to ask the District to design a program for them. Expansion of access for persons with disabilities to these programs will be based on wider outreach and communication of the opportunities, and on input from, and participation of, persons with special needs and interests.

The following specific measures will be implemented by the District in order to expand access to its Docent and Volunteer Programs:

1. Expand the mailing list for the Docent "Hikes and Walks" and the "Volunteer Voice" newsletters to include organizations and groups that are concerned with serving people with disabilities.
2. Encourage and act on specific information or suggestions for participation by persons with disabilities in the programs, either through the efforts of persons already in the programs or by encouraging other individuals or groups to participate in a way that directly or indirectly benefits access for persons with disabilities.
3. Ensure that the Docent and Volunteer Coordinators, and the docents and volunteers themselves, are aware of the interests and needs of persons with disabilities, and help them to

provide the accommodations that may be necessary. (Publish article in upcoming newsletter, cover issue generally in upcoming training or meetings, and cover specific measures as they are requested or identified).

4. Encourage and recruit people with disabilities to participate in the volunteer and docent programs and to make use of open space resources in general.

VIII. Physical Barriers to be Corrected

An inventory of all District sites has been completed to identify physical barriers to program accessibility. The inventory forms are attached as Appendix A. The inventory identified the following physical barriers to general program accessibility, existing as of August, 1992, which are to be corrected by January 26, 1995:

Parking Areas, Various Preserves

The following parking areas lack designated accessible parking spaces, which will be added as noted below:

<u>Skyline Area Preserves</u>	<u>Number of Spaces</u>	<u>Number of Required Accessible Spaces</u>
1. Los Trancos	25	1
2. Monte Bello	45	2
3. Purisima Creek Redwoods (Higgins-Purisima)	10	1
6. Windy Hill	10	1
<u>Foothills Area Preserves</u>		
1. Fremont Older	10	1
2. Monte Bello, (Picchetti Ranch)	35	2
3. Rancho San Antonio Permit Lot	12	1
<u>Total number of signs required</u>		9

Monte Bello Open Space Preserve, Black Mountain Pack-in Camping Area

1. Replace restroom facility with wheelchair accessible unit.
2. Publish permit procedures for backpack camp to allow drive-in access to visitors with disabilities.

Fremont Older Open Space Preserve

1. Replace temporary restroom with a wheelchair accessible temporary restroom.

Rancho San Antonio Open Space Preserve

1. Install two self-contained accessible restrooms near Deer Hollow Farm (Project in FY 92/93 budget, currently pending use permit approval).

Trailhead Gates and Stiles

Most District trailheads feature open access or "block type" stiles which accommodate wheelchairs. Where physically feasible, the District will add accessible (block type) stiles at trailheads that have only step-over stiles.

VIII. Administration of the Access Plan

The District's planning manager, Randy Anderson, is the person responsible for administration of the Access Plan and response to access issues. Comments or questions may be directed to Mr. Anderson at the District administrative offices.

The District has formed a steering committee of persons who are interested in reviewing and making recommendations on the implementation of Access Plan. Please contact Randy Anderson at the District for more information, or if you are interested in participating on the committee.

The District publishes, and regularly updates, information on access conditions, entitled "Access Opportunities", which may be obtained by calling, writing or visiting the District offices.

APPENDIX A

Skyline Area Open Space Preserves

ADA Assessment Notes

Preserve: Coal Creek Open Space Preserve

PARKING

No developed parking. Parking is available at several roadside pullouts. A CalTrans vista point is located approximately 1.2 miles north of the Skyline Boulevard and Alpine Road intersection. Some preserve visitors use this parking facility.

TRAILHEAD

- a. Crazy Pete's Road (off Skyline Boulevard). The private road serves several residences. No private vehicles are allowed on Crazy Pete's Road. Beyond the private residences (approximately one-half mile), the road is gated.
- b. Thompson Driveway (off Skyline Boulevard, below CalTrans vista point). Preserve entrance is located at the end of a gravel driveway serving several residences. A pipe gate and equestrian stile are located at the preserve boundary.
- c. Alpine Road (south). Alpine Road is gated at Skyline Boulevard and in Portola Valley. It is used by hikers, bicyclists and equestrians but no stile entry is provided at the gates.
- d. Alpine Road (north). An equestrian stile is located at this entry to the preserve.

SIGNING

Signing for the preserve is limited to trail directional signs, and regulatory (wildland) entry signs.

TRAILS

The trails on the preserve are primarily dirt farm roads which were built prior to the District's ownership. The roads used for patrol purposes in addition to serving as hiking and riding trails. The roads are steep in some cases, and may have an uneven surface. Some trail construction has occurred on the preserve during the District's ownership, however, it has been minimal. The trails are narrow (approximately three feet wide), and may have uneven surfaces. The surface of the trail is compacted soil and the grade is generally maintained at 10% or less.

RESTROOMS

No restrooms are provided.

WATER

No public water service is provided.

STRUCTURE

A large barn is located in the meadow (off Crazy Pete's Road). Public access to the barn is not allowed.

RECOMMENDED ACTION

None

ADA Assessment Notes

Preserve: El Corte de Madera Open Space Preserve

PARKING

No developed parking. Parking is available at Skegg's Point, a CalTrans vista point, located on the east side of Skyline Boulevard 3.9 miles north of Highway 84. Additional informal parking is available at roadside pullouts around the perimeter of the preserve.

TRAILHEAD

- a. **Skegg's Point.** From Skegg's Point, the preserve entrance is located several hundred yards north, on the west side of Skyline Boulevard. A pipe gate (CM01) and equestrian stile are located at the entrance to the preserve.
- b. **Methusuleh Trailhead (CM02).** A pipe gate and equestrian stile and walk through stile are located at this informal entrance to the preserve. The trailhead is located on Skyline Boulevard, 3.4 miles north of the Highway 84 intersection.
- c. **Gordon Mill Trailhead (CM03).** Located 2.9 miles north of the Highway 84 intersection on Skyline Boulevard. A pipe gate and equestrian stile are located here.
- d. **Bear Gulch Road (CM05, CM06).** No stile

SIGNING

Signing for the preserve is limited to trail directional signs, and regulatory (wildland) entry signs.

TRAILS

The trails on the preserve are primarily dirt logging roads which were built prior to the District's ownership. The roads are currently used for patrol purposes in addition to serving as hiking and riding trails. The roads are steep (very steep in some cases), and may have an uneven surface.

Some narrow trails exist on the preserve. A motorcycle club had an agreement with the former owner of the property to use the site for off road dirt bike use. The club built trails, however, since they were built for motorcycle use, they are very steep. The trails are narrow (approximately three feet wide or less), and may have uneven surfaces. The surface of the trails is compacted soil and the grade is generally maintained over 10%

RESTROOMS

No restrooms are provided.

WATER

No public water service is provided.

STRUCTURE

There are no public structures on the preserve.

RECOMMENDED ACTION

None

ADA Assessment Notes
Preserve: Foothills Open Space Preserve

PARKING

No developed parking. Roadside pullout accomodating approximately 3 vehicles is located on Page Mill Road adjacent to the trailhead.

TRAILHEAD

- a. **Page Mill Road** A pipe gate (FH01) and walk through stile are located at the trailhead.

SIGNING

Signing for the preserve is limited to regulatory (wildland) entry signs.

TRAILS

The trail on the preserve is narrow (approximately three feet wide or less), and may have uneven surfaces. The surface of the trail is compacted soil and the grade is generally maintained at approximately 10%.

RESTROOMS

No restrooms are provided.

WATER

No public water service is provided.

STRUCTURE

There are no public structures on the preserve.

RECOMMENDED ACTION

None

ADA Assessment Notes
Preserve: La Honda Creek Open Space Preserve

PARKING

Parking is by permit only. Access is via Allen Road, a private road, off of Bear Gulch Road. At the end of Allen Road a large metal gate marks the entrance to the preserve. Permitted visitors must open and close the gate and park in the designated pullout approximately 0.2 miles inside the preserve. There is not a designated handicapped parking space, but parking is not a problem since the area is regulated through a permit system.

TRAILHEAD

- a. No barriers exist from the parking area.

SIGNING

Signing for the preserve is limited to regulatory (wildland) entry signs. The trails are unsigned at the present time.

TRAILS

The trails on the preserve are primarily dirt farm roads which were built prior to the District's ownership. The roads are currently used for patrol purposes in addition to serving as hiking and riding trails. The road grades generally exceed 10%. The road is surfaced between the parking pullout and the closed area (approximately 0.2 mile). All other roads are dirt and may have uneven surfaces.

RESTROOMS

No restrooms are provided.

WATER

No public water service is provided.

STRUCTURE

There are no public structures on the preserve.

RECOMMENDED ACTION

None

ADA Assessment Notes

Preserve: Long Ridge Open Space Preserve

PARKING

No developed parking. Roadside parking is available at Grizzly Flat adjacent to Upper Stevens Creek County Park for approximately 10 vehicles. The Grizzly Flat parking is located on the east side of Skyline Boulevard, 3.0 miles south of the Alpine Road intersection. Additional roadside parking is along the perimeter of the preserve adjacent to Skyline Boulevard. Some roadside pullouts near the northern part of the preserve are posted "No Parking".

TRAILHEAD

- a. Grizzly Flat. An equestrian stile (three log stepover) is located here.
- b. Jikoji entrance. A pipe gate (LR02). No stile.
- c. Hickory Oak Ridge. A pipe gate (LR01) and equestrian stile. Terrain is steep at the gate location. A separate trail was cut to install the stile. No additional stile is possible without major earthmoving.
- d. Interior gating. This preserve has several interior gates blocking the trails due to the developed nature of the property located east of the preserve. There are not stiles associated with the interior gates.

SIGNING

Signing for the preserve is limited to trail directional signs and regulatory (wildland) entry signs.

TRAILS

The trails on the preserve are primarily dirt farm roads which were built prior to the District's ownership. The roads are currently used for patrol purposes in addition to serving as hiking and riding trails. The roads may be steep (very steep in some cases), and may have an uneven surface.

Some trails exist on the preserve. The trails are generally narrow (approximately 3 to 4 feet wide) and have a grade of approximately 10%. The surface of the trails is dirt and may be uneven.

RESTROOMS

No restrooms are provided.

WATER

No public water service is provided.

STRUCTURE

There are no public structures on the preserve.

RECOMMENDED ACTION

None

ADA Assessment Notes

Preserve: Los Trancos Open Space Preserve

PARKING

Developed parking for approximately 25 vehicles located on Page Mill Road. No designated handicapped space. Parking area surface is compacted soil and level. Roadside pullout located approximately 0.3 miles northeast on Page Mill Road.

TRAILHEAD

- a. **Parking Area** A low fence separates the parking area from Station 1 (the trail beyond is very narrow and rocky), access to the remainder of the preserve from the parking area is barrier-free
- b. **Page Mill Road** An equestrian stile and a walk through stile are located adjacent to the roadside pullout.

SIGNING

Signing for the preserve is a large entry sign, trail directional signing and regulatory (wildland) entry signs.

TRAILS

The trails on the preserve are primarily narrow (approximately three to four feet wide). Trail surfaces are compacted soil and may be uneven. The trail grade is generally maintained at approximately 10%.

SPECIAL FEATURES

An trail interpreting the San Andreas fault is located on the preserve. A self-guided brochure is available. Stations for interpretation are identified by post markers. Docents regularly lead hikes on this trail.

RESTROOMS

No restrooms are provided.

WATER

No public water service is provided.

STRUCTURE

There are no public structures on the preserve.

RECOMMENDED ACTION

Designate a handicapped parking space.

ADA Assessment Notes

Preserve: Monte Bello Open Space Preserve

PARKING

- a. **Page Mill Road.** Developed parking for approximately 45 vehicles. No designated handicapped space. Parking area surface is compacted soil and level.
- b. **Page Mill Road Permit Lot.** Permit parking (primarily used for equestrian events) is located near the intersection of Alpine Road and Page Mill Road. No designated spaces. Entry to the parking area involves opening a pipe gate on a steep driveway.
- c. **Monte Bello Road.** Permit parking area located at the southeastern boundary of the preserve on Monte Bello Road. Capacity of the area is approximately 20 vehicles, no designated spaces. Use of the parking area is primarily associated with docent-led hikes. Entry to this parking area also involves opening a pipe gate.
- d. **Roadside pullouts.** Roadside pullouts are located approximately 0.3 miles northeast on Page Mill Road (adjacent to Canyon Trail), and along Skyline Boulevard across from the main entrance to the Skyline Ridge Open Space Preserve.

TRAILHEAD

- a. **Parking Area.** Walk through stile.
- b. **Page Mill Road Permit Lot.** Trails are open; no stiles.
- c. **Monte Bello Road.** (Docent Lot) Trails are open; no stiles.
- d. **Canyon Trail.** Pipe gate (MB03) and equestrian stile
- e. **Skyline Boulevard.** Pipe gate (MB06) and equestrian stile.
- f. **Monte Bello Road.** (Road end at southern boundary) Pipe gate (MB09). No stile.
- g. **Monte Bello Road.** Private road up to preserve boundary. Gated at Page Mill Road. At preserve boundary, pipe gate (MB02) and walk through stile

SIGNING

Signing for the preserve is a large entry sign, trail directional signing and regulatory (wildland) entry signs.

TRAILS

The trails on the preserve are a mixture of old farm roads and narrow trails constructed by District staff. The patrol roads on the preserve are well maintained and are generally 10 feet wide with a compacted soil surface. The roads may be steep in some areas.

The trails on the preserve are generally three to four feet wide. Trail surfaces are compacted soil and may be uneven. The trail grade is generally maintained to approximately 10%.

The trail from the main parking area to the Stevens Creek Canyon vista point is graded to a slope not to exceed 5%. The trail is located on a steep side slope. With some trail tread work and a protective barrier on the downhill side of the trail, the trail to the vista point could be made accessible to wheelchair traffic.

SPECIAL FEATURES

A backpack camp is located near the summit of Black Mountain. The camp is generally a hike-in campground with a \$2.00 per person charge.

The Stevens Creek Nature Trail is an interpretive trail. A self-guided brochure is available. The interpretive

stations are marked with posts. Docents lead regularly scheduled hikes on this trail.

RESTROOMS

A wheelchair accessible restroom is provided at the Page Mill Road parking area, ~~and at the backpack camp.~~
No other restroom facilities are provided.

WATER

Water service (via a hose bib) is provided at the backpack camp. There are no drinking fountains.

STRUCTURE

There are no public structures on the preserve.

RECOMMENDED ACTION

Designate a handicapped parking space in the main parking area.

Alter permit procedures for the backpack camp to allow drive in access to visitors whose cars exhibit a handicapped sticker.

Replace the restroom at the backpack camp with a wheelchair accessible unit.

Upgrade the trail surface and widen the trail from the main parking area to the vista point to accommodate wheelchair traffic. This may require a railing of some sort.

ADA Assessment Notes

Preserve: Purisima Creek Redwoods Open Space Preserve

PARKING

- a. Skyline Boulevard (Whittemore Gulch Trailhead). Developed parking for approximately 25 vehicles (?). Located on Skyline Boulevard next to Kings Mountain Store, or 4.4 miles south of Highway 92. One or two designated handicapped parking space.
- b. Skyline Boulevard (Redwood Trailhead). Developed parking for three cars exhibiting handicapped stickers. Additional pullout parking for approximately eight cars. Located 0.4 miles north of Kings Mountain Road. Additional roadside pullout parking located north along Skyline Boulevard at junction of Skyline and Purisima Creek Road.
- c. Higgins-Purisima Road. Developed parking for approximately 10 vehicles. No designated handicapped parking space. Located at junction of Higgins Road and Purisima Creek Road.

TRAILHEAD

- a. Whittemore Gulch Trailhead. Pipe gate and walk-through stile
- b. Redwood Trailhead. A walk through (wheelchair accessible) stile is located at the trailhead.
- c. Higgins-Purisima Road Trailhead. A pipe gate (PC05) and walk through stile. An equestrian stile located on opposite end of gate.
- d. Purisima Creek Road. Junction with Skyline Boulevard. An equestrian stile is located adjacent to pipe gate (PC03).
- e. Tunitas Creek Road. A pipe gate (PC04) and equestrian stile

SIGNING

Signing for the preserve is a large entry sign, map and regulatory signs at the three parking lot entrances, and trail directional signing.

TRAILS

The trails on the preserve are a mixture of patrol roads (old logging roads) and narrow trails built by District staff. The dirt patrol roads tend to be steep and are approximately 10 feet wide. There are four trails that were built by District staff. Three of the four were built to a 10% grade and have a compacted soil surface. The trails are three to four feet wide.

Redwood Trail. The Redwood Trail was built to accomodate wheelchair traffic and is four feet wide. The slope does not exceed 5%. The trail is surfaced with a decomposed granite material. Steep sections of the trail have a protective railing on the downhill side.

SPECIAL FEATURES

A bench and two picnic tables are located along the Redwood Trail. The picnic tables have a long overhang on one end so that a person in a wheelchair can sit at the table.

RESTROOMS

Wheelchair accessible restrooms are provided at the Whittemore Gulch trailhead (?), near the end of the one-quarter mile long Redwood Trail, and at the Higgins Purisima Parking Area.

WATER

No public water service is provided.

STRUCTURE

There are no public structures on the preserve.

RECOMMENDED ACTION

Designate one handicapped parking space for the Higgins Purisima parking area.

ADA Assessment Notes

Preserve: Russian Ridge Open Space Preserve

PARKING

Alpine Road (main parking area). Developed parking for approximately 45 vehicles located on Alpine Road just west of the Skyline Boulevard and Alpine Road intersection. Two designated handicapped spaces. Parking area surface is compacted soil and level.

CalTrans vista point. Located approximately 1.2 miles north on east side of Skyline Boulevard. Paved space for approximately ten to fifteen vehicles; unpaved space for approximately five additional vehicles.

Alpine Road (roadside pullout). Pullout for approximately five vehicles.

TRAILHEAD

- a. **Alpine Road (main parking).** Wheelchair accessible ramp entrance to Alpine Pond area of Skyline Ridge Open Space Preserve. Open trail entrance to Bay Area Ridge Trail on Russian Ridge preserve (no barriers).
- b. **CalTrans Vista Point** A walk through is located adjacent to pipe gate (RR01). Stile entrance is located on west side of Skyline Boulevard, while parking is on the east side.
- c. **Alpine Road (roadside pullout).** An equestrian stile is located on a steep trail that climbs up the hill from the roadside pullout.

SIGNING

Signing for the preserve is a large entry sign, map and regulatory signing at the two trailheads in the main parking area, and trail directional signing at trail junctions. Regulatory (wildland) entry signs are located at the Alpine Road (roadside pullout).

TRAILS

The trails on the preserve are primarily patrol roads. The patrol roads are approximately ten feet wide and dirt surfaced. The roads can be steep and with an uneven surface.

The trail connecting the main parking area on Alpine Road with the Alpine Pond area of the Skyline Ridge Open Space Preserve is wheelchair accessible. It was built to a grade of 5%, and is surfaced with decomposed granite.

RESTROOMS

A wheelchair accessible restroom is provided at the main parking area on Alpine Road.

WATER

No public water service is provided.

STRUCTURE

There are no public structures on the preserve.

RECOMMENDED ACTION

None

ADA Assessment Notes
Preserve: Skyline Ridge Open Space Preserve

PARKING

Skyline Boulevard (main parking area). Developed parking for approximately 45 vehicles located inside preserve. Main entrance to preserve is 0.8 miles south of Alpine Road. Two designated handicapped spaces. Parking area surface is compacted soil and level.

Skyline Boulevard (equestrian parking area). Developed parking for approximately 20 vehicles and horsetrainers. No designated handicapped spaces. Parking area surface is compacted soil and level.

Skyline Boulevard (Horseshoe Lake parking area). Developed parking for ten vehicles exhibiting handicapped stickers.

Alpine Road. See Russian Ridge notes.

TRAILHEAD

- a. Main parking area. A walk through stile is located at the trailhead.
- b. Equestrian parking area. A walk through stile is located at the trailhead.
- c. Horseshoe Lake parking area. A walk through stile is located at the trailhead.
- d. Alpine Pond area. See Russian Ridge notes.

SIGNING

Signing for the preserve is a large entry sign, map and regulatory signing at the three trailheads in the developed parking areas, and trail directional signing at trail junctions.

TRAILS

Alpine Pond Trail is wheelchair accessible. It is designed to a 5% maximum grade and is surfaced with a compacted decomposed granite. The trail border closest to the pond is delineated with a log barrier. The trail is approximately 1 mile long.

Horseshoe Lake Trail is also wheelchair accessible. The trail begins at the handicapped parking area above one of the arms of the lake and continues to the dam face. The trail meets the same standards as the Alpine Pond Trail. Beyond the dam, the trail is not surfaced and becomes slightly steeper.

The remainder of the trails on the preserve are comprised of hiking and riding trails with a maximum grade of 10% and approximately 3 to 4 feet wide. Dirt patrol roads make up the remainder of the trail system. These are generally steep to very steep (15% slope or greater), and wide (approximately 10 feet).

RESTROOMS

A wheelchair accessible restroom is provided at the main parking area, and at the handicapped parking area. The Alpine Pond area of the preserve is served by the wheelchair accessible restroom located at the Russian Ridge parking area.

WATER

No public water service is provided.

STRUCTURE

The nature center located at Alpine Pond is designed for wheelchair access. The building interior is undeveloped. No other public structures are located on the preserve.

RECOMMENDED ACTION

None

ADA Assessment Notes

Preserve: Saratoga Gap Open Space Preserve

PARKING

No developed parking. Parking is available at a CalTrans vista point located at the southeast corner of the Highway 9 and Highway 35 intersection. Visitors must cross Highway 9 to access the preserve. Several vehicles may park in a roadside pullout located at the trailhead on the northeast side of the intersection.

TRAILHEAD

An equestrian stile are available at the trailhead, located at the on the northeast side of Highway 9, opposite the CalTrans vista point.

SIGNING

Signing for the preserve is a map and regulatory signing at the trailhead, and trail directional signing at trail junctions.

TRAILS

The preserve is developed with only one trail. The Bay Area Ridge Trail begins at the trailhead, paralleling Skyline Boulevard, and passing into Upper Stevens Creek County Park. The trail is narrow, steep, and in some cases, rocky.

Charcoal Road is a patrol road which cuts through the northeastern corner of the preserve. The patrol road is very steep.

RESTROOMS

There are no public restrooms.

WATER

No public water service is provided.

STRUCTURE

There are no public structures on the preserve.

RECOMMENDED ACTION

None

ADA Assessment Notes

Preserve: Thornewood Open Space Preserve

PARKING

Developed parking for approximately ten vehicles is provided along the driveway to the Thornewood house. Designated?

TRAILHEAD

A walk-through stile(?) is available at the trailhead, located across the driveway from the parking area. Access to the trailhead is paved but somewhat steep (exceeds 10% grade).

SIGNING

Signing for the preserve is regulatory signing at the trailhead, and trail directional signing at trail junctions.

TRAILS

The preserve is developed with only one trail. The trail begins at the trailhead across from the parking area and terminates at Schilling Lake. The trail is approximately 10% grade and approximately three feet wide. The trail becomes a patrol road for the last 1/4 mile before hitting Schilling Lake. The patrol road is approximately ten feet wide and graded to a 10 to 15% slope.

RESTROOMS

There are no public restrooms.

WATER

No public water service is provided.

STRUCTURE

There are no public structures on the preserve.

RECOMMENDED ACTION

Designate one handicapped parking space

ADA Assessment Notes

Preserve: Teague Hill Open Space Preserve

PARKING

There is no developed parking for this preserve

TRAILHEAD

There are no developed trailheads.

SIGNING

Signing for the preserve is limited to regulatory signing and preserve boundary markers.

TRAILS

The trails located on this preserve are limited to trails formerly managed by the Woodside Trails Club. The trails are steep and can be eroded.

RESTROOMS

There are no public restrooms.

WATER

No public water service is provided.

STRUCTURE

There are no public structures on the preserve.

RECOMMENDED ACTION

None

ADA Assessment Notes
Preserve: Windy Hill Open Space Preserve

PARKING

There is developed parking for approximately ten vehicles at the Spring Ridge entrance to the preserve. Additional parking in the form of roadside pullouts is available at the north gate along Skyline Boulevard.

TRAILHEAD

Spring Ridge A trailhead to the anniversary trail and to the Windy Hill loop trail is located at the Spring Ridge entrance to the preserve. Both trail entries are barrier-free.

North Gate. A walk-through stile and equestrian stile are located at this entrance to the preserve.

South Gate. An equestrian stile is located at this entry

Portola Road Entry. An equestrian stile is located off the Melchor driveway, just below Sausal dam.

Alpine Road Entry. An equestrian stile is located at the Alpine Road entry closest to Willowbrook Drive. A walk-through stile is located at the bottom of Razorback Ridge on the loop trail.

SIGNING

Signing for the preserve is a map and regulatory signing at the Spring Ridge entrance and the North gate entrance. Wildland signs are found at all other entries. Trail signs are located at trail junctions.

TRAILS

Most of the trails are narrow and steep. None of the trails have been built to wheelchair accessible standards due to steep terrain. The Spring Ridge Trail is a patrol road which is very steep in places.

RESTROOMS

There are no public restrooms.

WATER

No public water service is provided.

STRUCTURE

There are three accessible picnic tables located adjacent to the Spring Ridge parking area. One of the tables has been retrofitted with a long overhang on one end to easily accommodate a visitor in a wheelchair. There are no other public structures on the preserve.

RECOMMENDED ACTION

Designate a handicapped parking space at the Spring Ridge parking area.

APPENDIX B

Foothills Area Open Space Preserves

ADA Assessment Notes

Preserve: Cathedral Oaks Area, Sierra Azul Open Space Preserve

PARKING

There is no developed parking for this preserve.

TRAILHEAD

There are no developed trailheads.

SIGNING

Signing for the preserve is limited to regulatory signing and preserve boundary markers.

TRAILS

The trails on the preserve are old jeep roads which were built prior to the District's ownership. The roads are currently used for patrol purposes. They also receive some neighborhood equestrian use. Many of the roads wind in and out of private property. The road grades generally exceed 10%. All roads are dirt and may have uneven surfaces.

RESTROOMS

No restrooms are provided.

WATER

No public water service is provided.

STRUCTURE

There are no public structures on the preserve.

PROPOSED CHANGES

There are no proposed changes at this time. Much of the Cathedral Oaks Area has been designated Conservation Management Unit (CMU) because of limited public access.

ADA Assessment Notes

Preserve: Duveneck Windmill Pasture Area, Rancho San Antonio Open Space Preserve

PARKING

No developed parking. Roadside parking for approximately 6 cars is available at the end of Rhus Ridge Road near the preserve entrance.

TRAILHEAD

- a. **Rhus Ridge Road.** From Moody Road, the preserve entrance is located 0.2 miles south on Rhus ridge Road. A pipe gate (WP01) and equestrian stile are located at the entrance to the preserve.

SIGNING

Signing for the preserve is limited to trail directional signs, and regulatory (wildland) entry signs.

TRAILS

The trails on the preserve consist of approximately 3 miles of dirt roads built prior to the District's ownership and 2.5 miles of single track trail built by the District. The roads are currently used for patrol purposes in addition to serving as hiking and riding trails. The roads are generally very steep, and may have an uneven surface. The single track trail varies from 3 to 4 feet in width with pullouts located near blind corners. The trail maintains a grade of 10% or less and is surfaced with compacted soil.

RESTROOMS

No restrooms are provided.

WATER

No public water service is provided.

STRUCTURE

There are no public structures on the preserve. A caretaker for the preserve lives in a trailer located near the preserve entrance.

PROPOSED CHANGES

The preserve has three equestrian stiles (three-log-stepover) that generally lead to steep, unsurfaced patrol roads or trails. District block stiles (walk through stiles) will be installed adjacent to the equestrian stiles where feasible. Estimated costs per stile are \$50.00.

ADA Assessment Notes
Preserve: El Sereno Open Space Preserve

PARKING

There is no developed parking in the preserve. Roadside parking for approximately 2 cars is available at the end of Monte Vina Road near the southern preserve boundary.

TRAILHEAD

Monte Vina Road. This trailhead is located at the end of Monte Vina Road at the southern preserve boundary. It is the main entrance to the preserve. A pipe gate (ES03) and an equestrian stile mark the entrance.

Bolhman Road. This trailhead is located at the end of Bolhman Road at the western preserve boundary. A pipe gate (ES04) and an equestrian stile mark this informal preserve entrance. There is no parking available here.

SIGNING

Signing for the preserve includes trail directional signing, regulatory (wildland) entry sign, preserve boundary plaques and private property signing.

TRAILS

There are about four miles of trail on the preserve. These trails are old jeep roads which were built prior to District's ownership. They are used for patrol purposes in addition to serving as hiking, bicycling, and riding trails. The roads tend to be steep, generally exceeding 10% and are approximately 10 feet wide. Road surface is dirt.

RESTROOMS

No restrooms are provided.

WATER

No public water service is provided.

STRUCTURE

There are no public structures on the preserve.

PROPOSED CHANGES

District block stiles (walk through stile) will be installed adjacent to equestrian stiles where feasible. Estimated costs per stile are \$50.00.

ADA Assessment Notes

Preserve: Kennedy Limekiln Area, Sierra Azul Open Space Preserve

PARKING

No developed parking. Roadside parking is available along Kennedy Road and Top of the Hill Road near the north entrance to the preserve. Parking is also available at Lexington Reservoir County Park located just west of the preserve.

TRAILHEAD

- a. **Kennedy Road** This is the northern entrance into the preserve. A District pipe gate (SA01) and equestrian stile are located just inside the preserve.
- b. **Alma Bridge Road (Priest Rock Road)** This is the western entrance into the preserve. Priest Rock Road begins at Alma Bridge Road and runs east through Santa Clara Valley Water District (SCVWD) land for about one mile before entering the preserve. A SCVWD owned gate (SA21) is located on Priest Rock Road near its intersection with Alma Bridge Road. A District pipegate (SA23) and equestrian stile is located on Priest Rock Road near the western preserve boundary.

SIGNING

Signing for the preserve includes a map sign, trail directional signing, regulatory (wildland) entry signs, preserve boundary markers, and private property signs.

TRAILS

The trails on the preserve are dirt surfaced roads which were built prior to the District's ownership. The roads are currently used for patrol purposes in addition to serving as hiking, bicycling, and riding trails. The road grades generally exceed 10%. All roads may have uneven surfaces.

RESTROOMS

No restrooms are provided.

WATER

No public water service is provided.

STRUCTURE

There are no public structures on the preserve.

PROPOSED CHANGES

District block stiles (walk through stile) will be installed adjacent to equestrian stiles where feasible. Estimated costs per stile are \$50.00.

ADA Assessment Notes

Preserve: Fremont Older Open Space Preserve

PARKING

Developed parking for approximately 10 cars is available on Prospect Road near the preserve's eastern entrance. Parking area surface is compacted soil and level. There are no designated handicapped spaces. Additional parking is available at Stevens Creek County Park located immediately northwest of the preserve.

TRAILHEAD

- a. **Propect Road Parking Area (east)** This is the main trailhead for the preserve. There is no stile or gate located here. From the parking area Prospect Road continues west into the preserve for approximately 1/4 mile. This paved section of road serves several private residences that are inholdings in the preserve. It is oil and screened every few years. Only resident vehicles and authorized vehicles are permitted on this section of road. The road climbs steeply from the parking area to an internal District pipe gate (F002) and equestrian stile (three-log-stepover). Beyond the gate and stile begin the preserve's network of patrol roads and trails.
- b. **Regnart Road (north)** A pipe gate (F003) and equestrian stile are located at this informal entrance to the preserve. Roadside parking for about 2 cars is available.
- c. **P.G.&E Road/Stevens Creek County Park (northwest).** A District pipe gate and equestrian stile are located on the P.G.&E. Road at the preserve boundary. Preserve visitors park at the county park and follow county trail system to get to this informal preserve entrance. ????

SIGNING

Signing for the preserve includes a map sign, trail directional signing and regulatory (wildland) entry signs all wooden. There are also several types of metal regulatory signs used on the preserve.

TRAILS

The trails on the preserve are primarily dirt roads which were built prior to the District's ownership. The roads are used for patrol purposes in addition to serving as hiking, bicycling, and riding trails. The roads are steep in some cases, and may have an uneven surface. Several single track trails have been constructed on the preserve during the District's ownership. The trails are narrow (approximately three feet wide), and may have uneven surfaces. The trail surface is compacted soil and the grade is generally maintained at 10% or less.

RESTROOMS

A temporary portable restroom is located near the parking lot on Prospect Road (not wheelchair accessible).

WATER

No public water service is provided.

STRUCTURE

There are no public structures on the preserve. The Fremont Older house is a historic building located on the preserve and leased to a private party. Docent led tours of the house and garden are offered to the public once a year.

ADA Assessment Notes

Preserve: Fremont Older Open Space Preserve (continued)

PROPOSED CHANGES

Replace temporary portable restroom with wheelchair accessible restroom.

The preserve has six equestrian stiles (three-log-stepover) that generally lead to steep, unsurfaced patrol roads or trails. District block stiles (walk through stile) will be installed adjacent to the equestrian stiles where feasible. Estimated costs per stile are \$50.00.

\$3,000.00 has been budgeted this year (1992-93) for a redesign of the existing parking lot to accomodate the increasing number of preserve visitors. The new parking lot design would include a self-contained restroom that would meet ADA requirements. Designated handicapp parking spaces would also be included in the plans. Implementation of the plans would be scheduled in the 1993-94 budget year. Construction costs for the new restroom and parking lot are estimated at \$25,000.

ADA Assessment Notes

Preserve: Mt. Umunhum Area, Sierra Azul Open Space Preserve

PARKING

No developed parking. Roadside parking is available along Mt. Umunhum Road near Bald Mountain.

TRAILHEAD

- a. **Bald Mountain.** (Mt. Umunhum Road) A double pipe gate (SA08) is located on Mt. Umunhum Road near the road that leads to Bald Mountain. Pipe gate (SA07) is located at the entrance to the road to Bald Mountain. There are no stiles.

SIGNING

Signing for the preserve is limited to trail directional signs, regulatory (wildland) entry signs, preserve boundary markers, and private property signs. There are also several different metal regulatory signs used on the preserve.

TRAILS

Most of the preserve is currently inaccessible to the public. Visitors are encouraged, however, to follow a 1/2 mile section of unsurfaced road/trail that leads to Bald Mountain from Mt. Umunhum Road. Bald Mountain offers views of the Almaden Valley and a place to picnic.

RESTROOMS

No restrooms are provided.

WATER

No public water service is provided.

STRUCTURE

There are no public structures on the preserve. There are a number of structures located at the former Almaden Airforce Base on the summit of Mt. Umunhum. This entire base is closed to the public at this time.

PROPOSED CHANGES

A block stile (walk through stile) will be installed adjacent to gate (SA07) if feasible. Estimated costs per stile are \$50.00.

ADA Assessment Notes

Preserve: Picchetti Ranch Area, Monte Bello Open Space Preserve

PARKING

A developed parking area located just inside the northwest preserve entrance accommodates approximately 35 cars. The lot is generally level and surfaced with baserock. There are no designated handicapped spaces.

TRAILHEAD

Parking lot A walk through stile near the southeast end of the parking lot marks the entry onto the preserve's trail system.

Monte Bello Road Splitrail fencing and an equestrian stile (3-log stile) mark this informal trailhead off of Monte Bello Road.

Stevens Canyon Road Equestrian stile leads to an extremely steep trail.

SIGNING

Signing for the preserve includes regulatory wildland (entry) signing, and trail directional signing. There is no signing indicating that the winery or restrooms are accessible.

TRAILS

There are approximately two miles of trail on the preserve. Old farm roads built prior to District ownership make up about 50% of the preserve trail system. The roads are used for patrol purposes in addition to serving as hiking, riding, and bicycling trails. Roads are dirt surfaced, approximately 10 feet wide, and may have uneven surfaces. Road grades exceed 10% in several locations. The road from the winery to the pond is fairly level with one steep section that exceeds 10% slope.

Pac Bell Line This is an extremely steep section of trail that follows the alignment of an underground Pac Bell telephone line. The trail surface is compacted soil. It is approximately 6 feet wide and has a number of water bars.

Winery Trail This single track trail begins at the south end of the parking lot and follows the fenceline around the winery. When the winery is not open to the public, preserve visitors must use this trail to access the other preserve trails and the public restroom. The trail is approximately 3 feet wide, surfaced with compacted soil and generally maintains a grade under 10%. A large rock partially blocks a small section of the trail.

RESTROOMS

There are two public restrooms located near the winery. The restrooms were built to meet accessibility requirements. However the trail to the restrooms exceeds 8% and the concrete pad that the restrooms sit on is not level with the trail. For these reasons, it may be difficult for a wheelchair to access the restrooms. In addition, the road from the winery is gated and therefore prevents the disabled public from reaching the restrooms unless the gate is open.

WATER

A drinking fountain is located near the restrooms.

ADA Assessment Notes

Preserve: Picchetti Ranch Area, Monte Bello Open Space Preserve (continued)

STRUCTURE

The brick winery building is open to the public every Friday, Saturday, and Sunday from 11 a.m. to 3 p.m., except holidays. This structure was recently restored under a state historic preservation grant. The project included adding a wheelchair lift to make the winery wheelchair accessible.

SPECIAL FEATURES

Ten picnic tables are available to the public during wine tasting, Friday, Saturday, Sunday 11 a.m. to 3 p.m.

PROPOSED CHANGES

The following changes will be implemented as funding becomes available.

1. **Restrooms** Improve trail access to restrooms to accomodate disabled visitors (grade should be under 8% and concrete pad should be level with trail surface). If physically feasible, install block stile (walk through stile) at existing gate near west end of winery building. Install wheelchair accessible signs on restrooms.
2. **Winery Trail** Remove rock partially blocking trail. Improve trail surface and entry into trail so visitors with limited disabilities can use it.
3. **Parking Lot** Designate two parking spaces as handicapp spaces and sign them appropriately.
4. **Winery** Install signing identifying the wheelchair lift.
5. **Stiles** Install block (walk through) stiles where feasible.

ADA Assessment Notes
Preserve: Pulgas Ridge Open Space Preserve

PARKING

There is no developed parking in the preserve. Roadside parking along Edmonds Road is available for about five cars.

TRAILHEAD

Edmonds Road A large preserve map board with surrounding split rail fencing marks the entry onto the easement trail that leads to the preserve trail system. A chainlink gate secures the trail and the adjacent Redwood Center (a treatment facility owned & operated by the City of San Francisco). The gate is open when the preserve is open.

SIGNING

Signing for the preserve includes a map entry board, regulatory (wildland) signing, and trail directional signing.

TRAILS

Cordilleras Trail This wheelchair accessible trail is on an easement owned by the District, located on San Francisco Water District land. The trail is partially complete. When finished it will lead from the roadside parking on Edmonds Road to the preserve boundary. It will be 0.6 miles long, 4' wide, level, and surfaced with decomposed granite (gold fines). Single split rail fencing will line the trail.

Polly Geraci Trail This 1.1 mile trail averages 3' in width. The trail surface is compacted soil and the grad is generally maintained at 10% or less.

Patrol Road This 0.7 mile section of road is partially paved. Road grades generally exceed 10%.

RESTROOMS

No public restrooms are provided.

WATER

No public water service is provided.

STRUCTURE

There are no public structures on the preserve.

SPECIAL FEATURES

A bench is located along the Polly Geraci Trail.

ADA Assessment Notes

Preserve: Pulgas Ridge Open Space Preserve (continued)

PROPOSED CHANGES

The District obtained state funding (LWCF grant) for trail construction in the preserve. Wheelchair accessible trails to be constructed under this grant are

1. Complete construction of the wheelchair accessible Cordilleras Entrance Trail (easement trail) to the preserve boundary.
2. Construct the Cordilleras Creekside Trail, 750' of trail that extends northwest from the end of the easement trail to a small meadow area. The trail follows a portion of Cordilleras Creek. The trail will be wheelchair accessible. It will be 4' wide, level, and surfaced with decomposed granite. A bench will be installed at the end of the trail in the meadow area.

These projects are scheduled to be implemented by June 1993.

ADA Assessment Notes

Preserve: Rancho San Antonio Open Space Preserve

PARKING

Parking for preserve visitors is available in the adjacent Rancho San Antonio County Park. There is also a 12 car permit parking lot located along the main road through the preserve. This lot is reserved for buses bringing groups of children to Deer Hollow Farm and for preserve visitors with limited disabilities. Use of this lot requires a special permit, which must be obtained from the District office. The lot is surfaced with compacted soil and is generally level. There are no designated handicapp spaces.

TRAILHEAD

St. Joseph's Ave. The main preserve trailhead is located near the southeast preserve boundary. A map sign board, block (walk through) stile, and associated splitrail fencing mark the trailhead. The trailhead leads to the trail through the meadow. The main road through the valley has open access, no stile.

Hay Barn Gate A wooden vehicle gate and block (walk through) stile mark this entrance to Rogue Valley and the preserve's outerlying trails.

SIGNING

Signing for the preserve includes a map entry sign, trail directional signing and regulatory (wildland) entry signs all wooden. There are also several types of metal regulatory signs used on the preserve.

TRAILS

There are approximately twelve miles of trail on the preserve. The majority of trails are old ranch roads or P.G.&E. service roads built prior to District ownership. These roads are used for patrol purposes in addition to serving as hiking, jogging and riding trails. The majority of these roads are dirt surfaced. Mora trail is surfaced with baserock. Sections of the valley floor trail (road) are surfaced with baserock, and oil and screened every two years. Road widths are about ten feet. The roads are typically steep with grades exceeding 15%. The road on the valley floor is level with generally a smooth surface.

About four miles of trail are single track trail. Trail widths average 3 feet. Trail grades generally do not exceed 10%. Trail surface is compacted soil.

Farm Bypass Trail Approx. .7 mile trail around Deer Hollow Farm. Trail width averages 3 to 4 feet, with wider areas provided for passing or resting. Grade is 10% or less. Surface is compacted soil.

RESTROOMS

A self-contained restroom is located at Deer Hollow Farm. Currently it is used by Deer Hollow Farm staff, participants of Mountain View's educational programs, and trail users. There are also public restrooms located in the county park.

WATER

A drinking fountain is located along the main trail by the open air barn..

ADA Assessment Notes

Preserve: Rancho San Antonio Open Space Preserve (continued)

STRUCTURE

The large hay barn located at the west end of Deer Hollow Farm, is often used by preserve visitors for picnics. Access into the barn area is through a walking gate. The barn is basically a shelter offering shade and picnic tables to the public. There are no other structures that are currently open to the public.

PROPOSED CHANGES

1. **Stiles** Block stiles (walk through stiles) will be installed where feasible.
2. **Restrooms** Two wheelchair accessible restrooms will be constructed just outside Deer Hollow Farm near the open hay barn. The project is pending use permit approval by Santa Clara County.

ADA Assessment Notes
Preserve: Ravenswood Open Space Preserve

PARKING

Developed parking is available for 12 vehicles. There is one designated handicapped space. Parking area surface is compacted aggregate base with chipseal paving.

TRAILHEAD

Parking Area. There is no stile or gate. Wooden bollards are located at the entrance to the trails to prevent vehicles from getting on trails. The bollards are spaced 5' apart.

SIGNING

Signing for the preserve includes a large entry sign, a shoreline bird interpretive sign, trail directional signing, and regulatory (wildland) entry signs.

TRAILS

There are approximately 1 1/2 miles of accessible trail located on the levees that surround the former salt pond. Hikers and bicyclists currently use the trail. The section of trail located on the eastern side of the pond is 8' wide with 2' shoulders. The trail surface is aggregate base with chipseal paving. The shoulders are earthen subsoil. This trail will become part of the proposed Bay Trail. The section of trail that connects the parking area to the pedestrian bridge is 8' wide (asphalt paving), with 2' chipseal paved shoulders. The remaining trail on the levees is 6' wide aggregate base with chipseal paving. Shoulders are earthen subsoil and are a minimum of 6" in width.

SPECIAL FEATURES

The levee trails lead to two accessible overlook decks. There are benches and hand railings on both decks. Ramps lead up to the decks. There is also a bench located adjacent to the parking area at the end of a short trail.

RESTROOMS

No public restrooms are provided.

WATER

No public water service is provided.

STRUCTURE

There are no public structures on the preserve.

PROPOSED CHANGES

There are no proposed changes at this time.

ADA Assessment Notes

Preserve: St. Joseph's Hill Open Space Preserve

PARKING

There is no developed parking available in preserve. Parking is available in adjacent Lexington Reservoir County Park.

TRAILHEAD

There are no developed trailheads on the preserve. To enter the northern end of the preserve, visitors must first pass through land owned by the Town of Los Gatos. Chainlink fencing with a narrow walk through mark the entrance into the town owned land. To enter the southern end of the preserve, visitors must pass through land owned by Santa Clara Valley Water District (SCVWD) and managed as part of the Lexington Reservoir County Park. A gated dirt road heads north from Alma Bridge Road through SCVWD land and onto the preserve.

SIGNING

Signing for the preserve includes trail directional signing, regulatory (wildland) entry signing, preserve boundary and private property signs.

TRAILS

The trails on the preserve are primarily old jeep roads which were built prior to District's ownership. They are used for patrol purposes in addition to serving as hiking, running, and bicycling trails. The roads tend to be steep, generally exceeding 10%, They are dirt surfaced, approximately 10 feet wide, and may have uneven surfaces.

The Jones Trail is a narrow single track trail built by the District. It is less than one mile in length. Trail width average about three feet. It is currently open to hikers, runners and bicyclists. A 0.3 mile section of the trail has been designated a walking zone, because this section has a steep drop off, grades above 10%, blind corners, and narrow width.

RESTROOMS

No restrooms are provided.

WATER

No public water service is provided.

STRUCTURE

There are no public structures on the preserve.

PROPOSED CHANGES

There are no proposed changes at this time.

ADA Assessment Notes

Preserve: Stevens Creek Shoreline Nature Study Area

PARKING

There is no developed parking on the preserve. The City of Mountain View provides parking at adjacent Shoreline Park.

TRAILHEAD

There are no developed trailheads.

SIGNING

Signing for the preserve is limited to regulatory (wildland) entry signs.

TRAILS

A level, 10' wide trail exists on the levee located adjacent to the preserve. The District holds a public recreational easement on the levee. Access to the levee trail is via the trails on Mountain View's adjacent Shoreline Park. The trail is surfaced with aggregate base and may have uneven surface.

RESTROOMS

No restrooms are provided. Public restrooms are provided at Shoreline Park.

WATER

No public water service is provided.

STRUCTURE

There are no public structures on the preserve.

PROPOSED CHANGES

There are no proposed changes at this time.

APPENDIX C

PERSONS AND ORGANIZATIONS CONTACTED IN PREPARING ADA PLAN

ADA Steering Committee and Contributors

Joe Villareal
360 Sheridan
Palo Alto, CA 94306

Johanna Wallace
1440 Hudson #9
Redwood City, CA 94061

Deborah Wright
1731 Parker
Berkeley, CA 94703

Julie Barnett Duncan
The Crippled Children's Society
of Santa Clara County, Inc.
2851 Park Avenue
Santa Clara, CA 95050

Jackie Schiedeck
251 Marcella Way
Millbrae, CA 94030

Frank Cooper, Executive Director
Free Wheelers Association, Inc.
P.O. Box 27428
San Francisco, CA 94127

Helen Jones
1030 Greenwood
Palo Alto, CA 94301

Physical Therapy Centers

Patrick Callahan, Director
El Camino Hospital
2500 Grant Road
Mountain View, CA 94040-4378
(415) 940-7000

Sandy McDade, Director
Stanford University Hospital
300 Pasteur Drive
Stanford, CA 94305
(415) 723-5111

Robert Nakaji, Director
Good Samaritan Hospital
2425 Samaritan Drive
San Jose, CA 95124
(408) 559-2377

Judy Sebring, Director
San Jose Medical Center
675 East Santa Clara St.
San Jose, CA 95112
(408) 977-4447

Blair Lindquist, Director
Community Hospital & Rehabilitation Center
815 Pollard Road
Los Gatos, CA 95030
(408) 378-6131

Glen Porter, Director
Seton Medical Center
1900 Sullivan Avenue
Daly City, CA 94015
(415) 992-4000

Sara Shapiro, Director
Seton Medical Center
1900 Sullivan Avenue
Daly City, CA 94015
(415) 992-4000

George Schoenstein, Director
Sequoia Hospital
525 Veterans Boulevard
Redwood City, CA 94063
(415) 369-0379

Chris Baughman, Director
Mills-Peninsula Hospital
1783 El Camino Real
Burlingame, CA 94010
(415) 696-4300

Master ADA Contact List

Agency: Adult Independence Development Center
Address: 1190 Benton St.
City: Santa Clara State: CA Zip: 95050

Attn: Sheri Burns
Title: Director of Community Services

Phone: 408-985-1243

Fax: 408-985-0671

Comments: Serve about 1000 people, have bi-monthly newsletter to
4-500 people. Will announce our workshops.

Agency: Advisory Commission on Developmentally Disabled
Co. of Santa Clara
Address: 70 W. Hedding Street
City: San Jose State: CA Zip: 95110

Attn:
Title:

Phone:

Fax:

Comments:

Agency: Bay Area Lupus Foundation
Address: 2635 N. 1st, Suite 206
City: San Jose State: CA Zip: 95134

Attn: Jo Dewhirst
Title:

Phone: 408-954-8600

Fax:

Comments: 15 employees

Agency: Bay Area Outreach and Rec Program
Address: 605 Eshleman Hall
City: Berkeley State: CA Zip: 94720

Attn: Al Gietzen
Title:

Phone:

Fax:

Comments:

Agency: CAR
Address: 525 Charleston Road
City: Palo Alto State: CA Zip: 94306

Attn: Ralph Scheer
Title: Executive Director

Phone: 415-494-0550

Fax:

Comments: Newsletter serves 1800 people. Comes out Oct. Jan. Will post.

Agency: Casa Olga Intermediate Care
Address: 180 Hamilton Ave.
City: Palo Alto State: CA Zip: 94301

Attn: Penny
Title:

Phone: 415-325-7821

Fax:

Comments:

Agency: Center for Independence of the Disabled
Address: 875 O'Neill Ave.
City: Belmont State: CA Zip: 94002

Attn: Eldon Luce
Title: Director

Phone: 415-595-0783

Fax:

Comments: Newsletter every 2 months. 4000 people on mailing list.

Agency: Channing House
Address: 850 Webster
City: Palo Alto State: CA Zip: 94301

Attn: Fred Seal
Title:

Phone: 415-327-0950

Fax:

Agency: Children's Health Council
Address: 700 Sand Hill Road
City: Palo Alto State: CA Zip: 94304

Attn: Dr. Alan Rosenthal, M.D.
Title: Lise Hewitt

Phone: 415-326-5530

Fax:

Comments: Newsletter published quarterly. 6000 people.

Agency: Children's Hospital
Address: 725 Welch Road
City: Palo Alto State: CA Zip: 94304

Attn: Jean Ewy
Title: Rehabilitation Engineering

Phone: 415-497-8198

Fax:

Comments:

Agency: Children's Hospital
Address: 725 Welch Road
City: Palo Alto State: CA Zip: 94304

Attn: Jean Tips
Title: Community Affairs

Phone: 415-497-8266

Fax:

Comments: Internal newsletter

Agency: Community Resources for
Independent Living
Address: 3130 La Selva Dr., Suite 202

City: San Mateo State: CA Zip: 94403

Attn: Rick Chavez
Title:

Phone:

Fax:

Comments: Budget cuts - no newsletter. Will present info in staff meetings

Agency: Community Resources for
Independent Living
Address: 1212 Broadway, Suite 200
City: Oakland State: CA Zip: 94612

Attn: Mony Bauer
Title: Training and Communication Coordinator

Phone: 510-451-7232 x 126

Fax:

Comments: Newsletter to staff (180) once a month

Agency: Community Resources for
Independent Living
Address: 300 Orchid City Drive, Suite 170
City: Campbell State: CA Zip: 95008

Attn: Patrick Driscoll
Title:

Phone: 408-374-3100

Fax:

Comments:

Agency: Crippled Children's Society
Address: 2851 Park Ave.
City: Santa Clara State: CA Zip: 95050

Attn: Julie Duncan
Title: Director Program Services

Phone:

Fax:

Comments: Very interested - newsletter twice a year & will announce
to Service Providers Assoc. which has approximately 35
organizations

Agency: Crisis Line for the Handicapped
Address: P.O. Box 54054
City: San Jose State: CA Zip: 95154

Attn:
Title:

Phone: 408-298-4263

Fax:

Comments:

Agency: De Anza - Physically Limited
Program
Address: 21250 Stevens Creek Blvd.
City: Cupertino State: CA Zip: 95015

Attn: Helen Jones
Title: Coordinator Access Services

Phone: 415-328-5174

Fax:

Comments:

Agency: Deaf Counseling Advocacy
and Referral Agency
Address: 25 Dana Ave.
City: San Jose State: CA Zip: 95126

Attn: Lisa Allthin
Title: Editor

Phone: 408-298-6770

Fax:

Comments: Director: Charles Garabrant. Serves 10 Bay Area
Counties, has 8 employment offices. (510) 895-2430 - Lisa's #.

Agency: Dept. of Rehabilitation
State of California
Address: 2570 W. El Camino Real, Suite 404
City: Mt. View State: CA Zip: 94040

Attn: Layda Cedeno
Title: Counselor

Phone: 415-949-2750

Fax:

Comments:

Agency: Development Center for Handicapped
Co. of Santa Clara
Address: 2300 Clove Drive
City: San Jose State: CA Zip: 95126

Attn:
Title:

Phone: 408-295-0551

Fax:

Comments:

Agency: Far West Wheelchair Athletic Assoc.
Address: 1530 Blossom Hill Rd.
City: San Jose State: CA Zip: 95118

Attn: Judy Benoit
Title: Executive Director

Phone: (408) 978-2828

Fax:

Comments: Will post.

Agency: Joe Villareal
Address: 360 Sheridan, #101
City: Palo Alto State: CA Zip: 94306

Attn:
Title:

Phone:

Fax:

Comments:

Agency: Lytton Gardens - Community Care
Address: 437 Webster Street
City: Palo Alto State: CA Zip: 94301

Attn: Maureen Milligan
Title: Activities Coordinator

Phone: (415) 328-3300

Fax:

Comments: Serve about 400 people; can host workshop at their place.

Agency: Miramonte Mental Health Care Center
Senior Services
Address: 206 California Ave.
City: Palo Alto State: CA Zip: 94306

Attn: Lynn Farr
Title: Executive Director

Phone: 415-617-8340

Fax:

Comments: Quarterly newsletter. Serves 350 people.

Agency: Muscular Dystrophy Association
Address: 561 Pilgram Drive, Suite C
City: Foster City State: CA Zip: 94404

Attn: Bernadette Lehane
Title: Patient Services Coordinator

Phone: 415-571-7246

Fax:

Comments: Serves 1000 patients. Has newsletter.

Agency: NOVA
Address: 505 W. Olive Ave., Suite 550
City: Sunnyvale State: CA Zip: 94086

Attn: Tim Duncan
Title:

Phone: 408-730-7232

Fax:

Comments: Newsletter. Serves 600 people. Interested

Agency: Palo Alto Medical Foundation
Address: 300 Homer Ave.
City: Palo Alto State: CA Zip: 94301

Attn: Jay Thorwaldson
Title: Community Affairs

Phone: 415-853-4820

Fax:

Comments:

Agency: Palo Alto Nursing Center
Address: 911 Bryant Ave.
City: Palo Alto State: CA Zip: 94301

Attn: Marc Algabright
Title:

Phone: 415-327-0511

Fax:

Comments: 66 residents most in wheelchairs - difficult to get around.

Agency: Palo Alto Unified School District
Educational Support Services
Address: 25 Churchill Ave.
City: Palo Alto State: CA Zip: 94306

Attn: Dr. Irvin Rollins Jr.
Title: Director

Phone: 415-329-3719
Fax:
Comments:

Agency: Peninsula Area Information and
Referral Services
Address: 3990 Ventura Court
City: Palo Alto State: CA Zip: 94306

Attn: Todd Santos
Title: Newsletter

Phone: 415-856-4062
Fax:
Comments:

Agency: Peninsula Center for the Blind
Address: 4151 Middlefield Rd., Suite 101
City: Palo Alto State: CA Zip: 94303

Attn: Susan Coan
Title:

Phone: 415-858-0202
Fax:
Comments: Newsletter. 1000 people

Agency: Peninsula Children's Center
Address: 3860 Middlefield Road
City: Palo Alto State: CA Zip: 94303

Attn: Janina Nadaner
Title: Program Director

Phone: 415-494-1200 x 33
Fax:
Comments:

Agency: Project HEAR
Address: 801 Welch Road
City: Palo Alto State: CA Zip: 94304

Attn: Marc kastner
Title:

Phone: 415-494-2000

Fax:

Comments: 4 staff. Budget cut - no newsletter, no public contact

Agency: Project Mobility
Address: 450 Bryant Street
City: Palo Alto State: CA Zip: 94301

Attn: Bill Carpenter
Title:

Phone: 415-327-2811

Fax:

Comments:

Agency: Recording for the Blind
Address: 488 W. Charleston Road
City: Palo Alto State: CA Zip: 94306

Attn: Joanne Sweet
Title: Executive Director

Phone: 415-493-3717

Fax:

Comments:

Agency: SamTrans ADA Committee
Address: 1440 Hudson, Apt. 9
City: Redwood City State: CA Zip: 94061

Attn: Johanna Wallace
Title:

Phone:

Fax:

Comments:

Agency: San Jose Office of
Therapeutic Services
Address: 1530 Blossom Hill Rd.

City: San Jose State: CA Zip: 95118-3302

Attn: Gary Okisaki
Title:

Phone: 408-267-0200

Fax:

Comments: Quarterly newsletter to 5000 people

Agency: San Mateo County
Commission on Disabilities
Address: 225 West 37th Ave.

City: San Mateo State: CA Zip: 94403

Attn: Stephen Juel
Title:

Phone: 415-573-2205

Fax:

Comments:

Agency: Santa Clara County
Health Department
Address: 660 S. Fair Oaks Ave.

City: Sunnyvale State: CA Zip: 94086

Attn: Aldyth Parle
Title: Nursing Supervisor

Phone: 408-732-3720

Fax:

Comments:

Agency: Santa Clara County
Mental Help Services

Address: 645 S. Bascom Ave.

City: San Jose State: CA Zip: 95128

Attn: Vicky Powell
Title: Supervisor

Phone: 408-299-6191

Fax:

Comments: Interested. Will announce to 14 centers and 14 contract programs. Serves from Palo Alto to Gilroy.

Agency: Senior Dayhealth Center
Address: 701 E. Meadow Drive
City: Palo Alto State: CA Zip: 94303

Attn: John Sink
Title:

Phone: 415-494-8018

Fax:

Comments: Clients physically impaired, a lot of difficulty in getting around.

Agency: Sensory Aids Foundation
Address: 399 Sherman Ave.
City: Palo Alto State: CA Zip: 94306

Attn:
Title:

Phone: 415-329-0430

Fax:

Comments:

Agency: Sheryl Davi
Address: 3345 Fleetwood Dr.
City: San Bruno State: CA Zip: 94066

Attn:
Title:

Phone:

Fax:

Comments:

Agency: Stanford Disability Resource Center
123 Meyer Library
Address: Stanford University
City: Stanford State: CA Zip: 94305

Attn: John Asheim
Title:

Phone: 415-723-1066

Fax:

Comments: Will e-mail handicapped staff (about 12 people)

Agency: Stanford University Medical Center
Dept. Community and Patient Relations
Address:
City: Stanford State: CA Zip: 94305

Attn: Sherri Berg
Title: Special Project Coordinator

Phone: 415-723-5926
Fax:
Comments:

Agency: Stevenson House
Address: 455 E. Charleston Road
City: Palo Alto State: CA Zip: 94306

Attn: Beverly Karnatz
Title: Executive Director

Phone: 415-494-1944
Fax:
Comments:

Agency: The Bridge School
Address: 545 Eucalyptus Ave.
City: Hillsborough State: CA Zip: 94010

Attn:
Title:

Phone:
Fax:
Comments: referred by Stan Hooper

Agency: The Health Library
Address: 248 Stanford Shopping Center
City: Palo Alto State: CA Zip: 94304

Attn: Linda Irvine
Title: Community Affairs

Phone: 415-725-8400
Fax:

Comments: Will post flyer; 1500-2000 people use this library. A community service of Stanford Univ. Hospital.

Agency: United Cerebral Palsy Association
Address: 100 View Street, Suite 102
City: Mt. View State: CA Zip: 94041

Attn: Frank Cooper
Title:

Phone: 415-969-4711

Fax:

Comments:

Agency: United Way
Resource Center Referral
Address: 1900 O'Farrell St., Suite 140
City: San Mateo State: CA Zip: 94402

Attn: Richard Navarro
Title:

Phone: 415-345-4871

Fax:

Comments:

Agency: V.A. Medical Center
Address: 3801 Miranda Ave.
City: Palo Alto State: CA Zip: 94304

Attn: Norma Hollowell
Title: Directors Office

Phone: 415-493-5000

Fax:

Comments: Hospital newsletter. 3500 employees and outpatient
veterans. also e-mail.

Agency: Whole Access
Address: 517 Lincoln Ave.
City: Redwood City State: CA Zip: 94061

Attn: Phyllis Cangemi
Title:

Phone: 415-363-2647

Fax: 415-364-8642

Comments:

MIDPENINSULA REGIONAL OPEN SPACE DISTRICT

R-93-08
Meeting 93-2
January 13, 1993

AGENDA ITEM

Plan for Compliance with the 1990 Americans with Disabilities Act

GENERAL MANAGER'S RECOMMENDATIONS



1. Adopt the attached ADA plan as District policy.
2. Amend the existing Site Emphasis Policy, Addendum number 1, Section E, Accessibility to the Public, to add the criterion: "Does the site offer opportunities to provide access for persons with disabilities?"

The ADA Plan is available to the public on request from the Planning Manager.

Discussion:

Over the past six months planning and public outreach has taken place to formulate and review a plan for compliance with the new federal law, the 1990 Americans with Disabilities Act (ADA). The law is intended to protect the rights of people with disabilities for access to public facilities. The law requires the District to have completed a self evaluation of the accessibility of its facilities and programs by January 26, 1993. The plan is to include measures for correcting any identified barriers or deficiencies, if physically and financially feasible, by January 26, 1995.

The Planning Process

An informational report was made to the Board at your regular meeting of July 22, 1992 including presentation of a Transition Plan outlining the requirements, objectives and process for the ADA plan.

On September 15 a public workshop on access needs for persons with disabilities was held at District offices. A Steering Committee was formed to guide the planning process. A mailing list of approximately 70 organizations serving people with disabilities in Santa Clara and San Mateo counties was assembled to provide notification of the meeting, and a number of known interested parties were personally contacted.

The Steering Committee held its first meeting on September 30 to focus on specific issues. On October 20 a combined public workshop and Steering Committee meeting was held to review the initial draft plan.

The plan was then circulated for staff comments and revised to its current form. Members of the Steering Committee and other persons who commented on the plan have been sent copies of the draft, and notice of this hearing has been sent to the ADA mailing list.

Highlights of the Plan

The Trail Classifications, beginning on page 9, provide a system that is intended to provide information to help people decide for themselves which trails are accessible. It will also help the District to inventory the accessibility of its trails, and helps to clarify trail construction standards. The inventory of trails for accessibility must be coordinated with the inventory for application of the new Trail Use Guidelines.

The Access Objectives and Policies, starting on page 14, are the heart of the Plan. The primary focus of the plan is on information and coordination. Only item 5 involves an amendment of existing District policy, by adding a criterion to the adopted Site Emphasis Policy.

The charts starting on page 19 illustrate the scheduled and budget projects that would include special access provisions; however, this does not reflect the impact of the pending budget cuts, which are now being analyzed and are likely to significantly extend the schedule.

The existing barriers to be corrected are listed starting on page 26. These are generally in-house projects which are not expected to have a significant budget impact.

Current Access Measures

As an implementation measure for the plan, a pamphlet describing the condition and features of the District's existing accessible trails and sites, entitled "Access Opportunities" has been prepared and publicized. Also, copies of the "Hikes and Walks" and "Volunteer Voice" newsletters have been mailed to the ADA contact list to encourage their participation.

Prepared by:
Randy Anderson, Planning Manager

Contact person:
Same as above

January 4, 1993
DRAFT

**ACCESS PLAN FOR PERSONS WITH DISABILITIES
MIDPENINSULA REGIONAL OPEN SPACE DISTRICT**

ACCESS PLAN FOR PERSONS WITH DISABILITIES MIDPENINSULA REGIONAL OPEN SPACE DISTRICT

TABLE OF CONTENTS

	SECTION	PAGE
I.	Introduction	1
II.	Description of the District's Basic Program	2
III.	Existing Access Improvements	3
IV.	Trail Access Classifications	9
V.	Access Objective and Policies	14
VI.	Planning and Prioritizing Access Improvements	16
VII.	Volunteer and Docent Programs	23
VIII.	Physical Barriers to be Corrected	26
IX.	Implementation of the Access Plan	28

Under Separate Cover:

- Appendix A ADA Assessment Notes - Skyline Area Preserves
Appendix B ADA Assessment Notes - Foothills Area Preserves

LIST OF FIGURES

	FIGURE	PAGE
Figure 1,	District Preserves Map	4
Figure 2,	Welcome to Open Space Map	5
Table 1,	Existing Access Improvements	6
Figure 3,	Trail Classification Criteria	13
Chart A,	Capital Improvements Plan, Trail Projects	19
Chart B,	Use and Management Plan Review Schedule	22

DRAFT
ACCESS PLAN FOR PERSONS WITH DISABILITIES
MIDPENINSULA REGIONAL OPEN SPACE DISTRICT

I. Introduction

The Americans with Disabilities Act of 1990 (ADA or "The Act") established that:

No qualified individual with a disability shall, by reason of that disability, be excluded from participation in or denied the benefits of services, programs, or activities of a public entity or subject to discrimination by such entity.

The Act became effective January 26, 1992 for park and recreation agencies. The law requires each agency to prepare a self-evaluation, to be completed by January 26, 1993. The self-evaluation is to cover all aspects of the District's facilities, programs and services, and identifies corrective measures where necessary. The self-evaluation must:

- Include evaluation of services, policies and practices (i.e. employment, programs, communications)
- Provide opportunity for public comment
- Be maintained and available to the public for 3 years
- Include a list of persons consulted, issues and problems examined/identified, and description of modifications made.

This Access Plan records the results of the District's self-evaluation for compliance with ADA, and presents the policies, process, and schedule whereby identified access improvement measures are to be implemented.

II. Description of the District's Basic Program

The District's basic policies and objectives focus on acquiring and preserving open space in its natural state. Provision of facilities is a secondary objective, and is by policy to be at a minimum level to support public access and use. Alteration of the natural landscape is to be minimized:

The District owns and manages 23 preserves totaling 35,000 acres in the Santa Cruz Mountain Range and on the San Francisco bayfront. The District's lands, facilities, and programs are described in more detail in the Visitor's Guide.

The District provides facilities that support the following public programs and activities:

- Trail use for general exercise, nature appreciation and relaxation. This includes walking, hiking, running, bicycling, and horseback riding.
- Picnicking (limited formal facilities)
- Camping (pack-in camp only)
- Historic buildings and sites to visit, and related activities
- Specific nature study and interpretation through docent-led walks and presentations
- Volunteer participation in improvement and maintenance projects
- Academic and scientific research
- Special uses including hang gliding, special events and workshops

The District also operates Docent and Volunteer programs to facilitate public use and enjoyment of the open space, as detailed in Section VI of this document.

III. Existing Access Improvements

In addition to its administrative offices, facilities developed and maintained by the Midpeninsula Regional Open Space District to support public access are summarized on the District maps and table of the preserves shown in Figures 1 and 2.

The Midpeninsula Regional Open Space District has actively pursued the provision of access to facilities for persons with physical limitations. The District has completed a number of trail and site improvement projects specifically intended to provide such access, and ensures that any new buildings or facilities meet access standards. The District has implemented, or is implementing, the projects listed in Table 1 to provide or improve access to its facilities and programs.

MIDPENINSULA REGIONAL OPEN SPACE DISTRICT

Group A Preserves

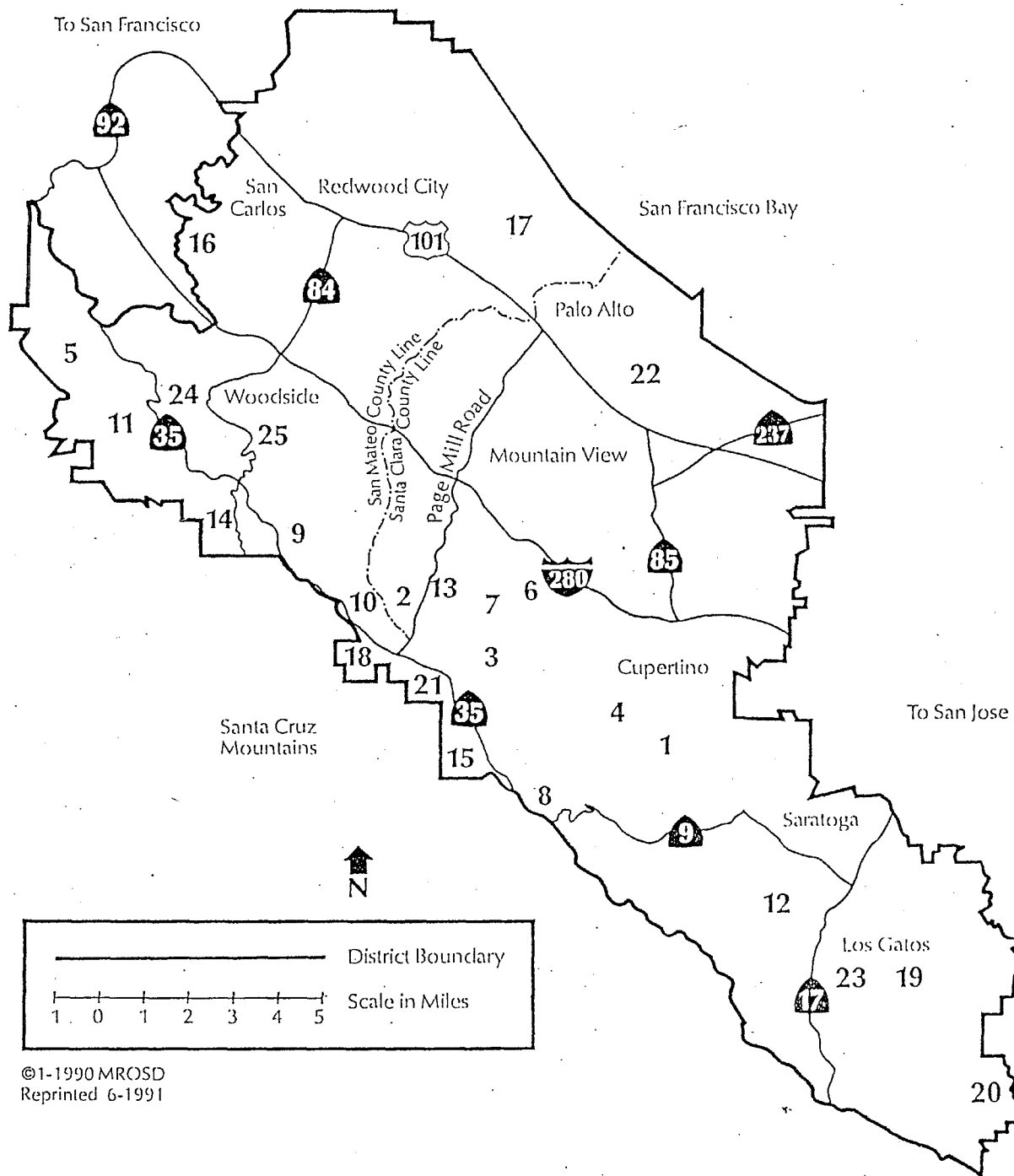
Fully Developed Sites

1. Fremont Older Open Space Preserve
2. Los Trancos Open Space Preserve
3. Monte Bello Open Space Preserve (Page Mill Road Area)
4. Monte Bello Open Space Preserve (Picchetti Ranch Area)
5. Purisima Creek Open Space Preserve
6. Rancho San Antonio Open Space Preserve
7. Rancho San Antonio Open Space Preserve (Duveneck Windmill Pasture Area)
8. Saratoga Gap Open Space Preserve
9. Windy Hill Open Space Preserve

Group B Preserves

Partially Developed Sites

10. Coal Creek Open Space Preserve
11. El Corte De Madera Open Space Preserve
12. El Sereno Open Space Preserve
13. Foothills Open Space Preserve
14. La Honda Creek Open Space Preserve
15. Long Ridge Open Space Preserve
16. Pulgas Ridge Open Space Preserve
17. Ravenswood Open Space Preserve
18. Russian Ridge Open Space Preserve
19. Sierra Azul Open Space Preserve (Kennedy-Limekiln Area)
20. Sierra Azul Open Space Preserve (Mt. Umunhum Area)
21. Skyline Ridge Open Space Preserve
22. Stevens Creek Shoreline Nature Study Area
23. St. Joseph's Hill Open Space Preserve
24. Teague Hill Open Space Preserve
25. Thornewood Open Space Preserve

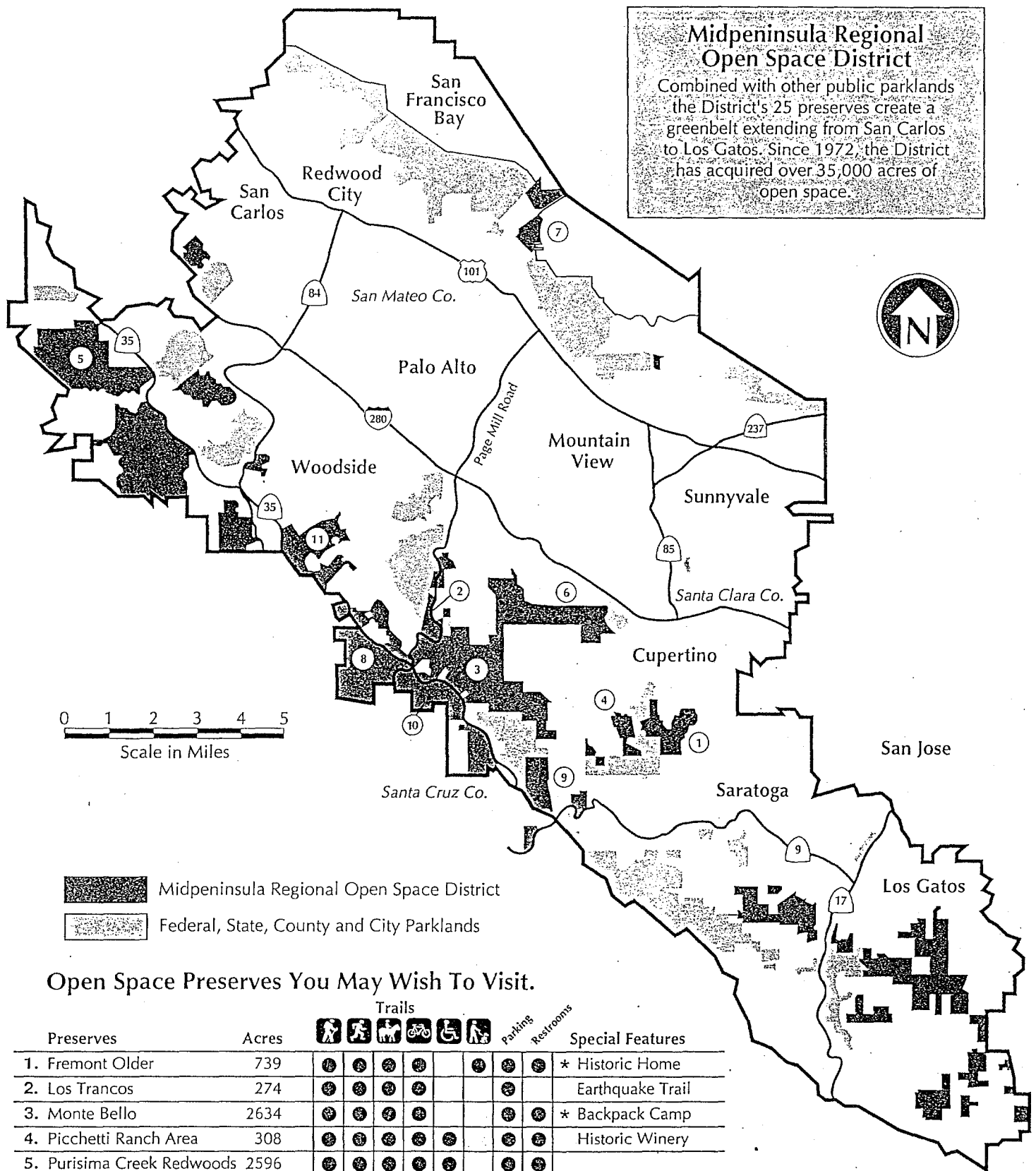


©1-1990 MROSD
Reprinted 6-1991

← Please use key above to locate preserves on map at left.

Welcome to Open Space

Attahemnt 2



Open Space Preserves You May Wish To Visit.

Preserves	Acres	Trails						Parking	Restrooms	Special Features
1. Fremont Older	739	●	●	●	●	●	●	●	●	* Historic Home
2. Los Trancos	274	●	●	●	●	●	●	●	●	Earthquake Trail
3. Monte Bello	2634	●	●	●	●	●	●	●	●	* Backpack Camp
4. Picchetti Ranch Area	308	●	●	●	●	●	●	●	●	Historic Winery
5. Purisima Creek Redwoods	2596	●	●	●	●	●	●	●	●	
6. Rancho San Antonio	972	●	●	●	●	●	●	●	●	Deer Hollow Farm
7. Ravenswood	471	●	●	●	●	●	●	●	●	Bay Trail
8. Russian Ridge	1547	●	●	●	●	●	●	●	●	
9. Saratoga Gap	614	●	●	●	●	●	●	●	●	
10. Skyline Ridge	1258	●	●	●	●	●	●	●	●	Alpine Pond
11. Windy Hill	1132	●	●	●	●	●	●	●	●	* Model Soaring

* Permits Required

To obtain
a Visitor's Guide
for information
on all preserves
call the District office
(415) 949-5500.

Table 1. Existing Access Improvements

Preserve (Area)	Parking	# Accessible Spaces	Restrooms	# Accessible	Level 1 Access Trails (See Pg. 10)	Trailside Amenities	Special Features	Comments
1. SKYLINE RIDGE Alpine Pond	0 (See Comments)	0	0	0	1.0 mi.	Benches @ Alpine Pond	Nature Center (undev.) & floating pier part of Ridge Trail	Accessible from Russian Ridge Parking - see #14
Horseshoe Lake Area	67	12	2	2	0.25 mi.	Benches @ Horseshoe Lake		3 parking areas, one includes equestrian parking
2. MONTE BELLO	45	0	2	1		Bench @ vista point	Interpretive brochure backpack camp	1 restroom @ Black Mtn. backpack camp (not accessible)
3. RANCHO SAN ANTONIO	10	0	1	1	0.5 mi.		Deer Hollow Farm, 10 picnic tables	restroom @ Deer Hollow Farm lease area. Trails may have uneven surface.
4. PURISIMA CREEK REDWOODS Whittemore Gulch Trailhead	20	1	1	0			Part of Ridge Trail	
Redwood Trailhead	8	3	1	1	0.25 mi.	Bench (1), Picnic Tables (2)		
Higgins-Purissima Trailhead	10	0	2	2				Temp. restrooms are accessible

Preserve (Area)	Parking	# Accessible Spaces	Restrooms	# Accessible	Level 1 Access Trails (See Pg. 10)	Trailside Amenities	Special Features	Comments
5. WINDY HILL	10	0	0	0		Benches	1 Accessible picnic table 2 regular tables Part of Ridge Trail	
6. ST. JOSEPH'S HILL	0	0	0	0				No developed parking
7. RAVENSWOOD	12	1	0	0	1.5 mi.		2 Accessible observation decks w/ benches	
8. EL CORTE DE MADERA CREEK	0	0	0	0				No developed parking
9. PICCHETTI RANCH AREA	35	0	2	2			Winetasting w/ picnic area, wheelchair lift at winery	
10. SARATOGA GAP	0	0	0	0				No developed parking
11. LOS TRANCOS	25	0	0	0			Interpretive Brochure	
12. LONG RIDGE	0	0	0	0			Part of Ridge Trail	No developed parking
13. PULGAS RIDGE	0	0	0	0	0.4 mi.			No developed parking
14. RUSSIAN RIDGE	45	2	1	1			Dedicated Ridge Trail	Trailhead to Alpine Pond Trail
15. LA HONDA CREEK	10	0	0	0				Permit parking for 10 vehicles, no designated HC space

Preserve (Area)	Parking	# Accessible Spaces	Restrooms	# Accessible	Level 1 Access Trails (See Pg. 10)	Trailside Amenities	Special Features	Comments
16. TEAGUE HILL	0	0	0	0				Undeveloped
17. FREMONT OLDER	10	0	1	0			Annual house tour	
18. KENNEDY ROAD AREA - SIERRA AZUL	0	0	0	0				No developed parking
19. WINDMILL PASTURE AREA	0	0	0	0				No developed parking
20. STEVENS CREEK SHORELINE NATURE STUDY AREA	0	0	0	0	0.25 mi.			Trail may have uneven surface
21. COAL CREEK	0	0	0	0				No developed parking
22. EL SERENO	0	0	0	0				No developed parking
23. FOOTHILLS	0	0	0	0				Undeveloped
24. THORNEWOOD	10	1	0	0			Annual house tours, permit picnic area	
25. MT. UMUNHUM AREA - SIERRA AZUL	0	0	0	0				No developed parking
26. CATHEDRAL OAKS - SIERRA AZUL	0	0	0	0				Undeveloped

IV. Trail Access Classifications

Trails are improvements that are most directly related to accessibility of the open space lands. These trail classes are intended to guide the District's evaluation of its existing trails, provide planning and construction information for new and improved trails, and provide information for potential trail users. These classifications and criteria are preliminary and may be subject to amendment as the District gains experience in their use and additional public input.

The criteria presented in this section are the minimum requirements for trails to be classified according to these levels. Only Level 1 trails are intended to meet whole access standards. Level 2 and 3 trails have a steeper grade, a rougher surface and fewer benches, pullouts, etc. than Level 1, but may still be accessible for persons with physical limitations, depending on their abilities and inclinations. Level 3 trails, with a 10% maximum grade, are the steepest trails that the District will construct based on its current overall trail construction standards. However, based on past construction practices and roads and trails inherited through land purchase, many existing trails do not meet this standard.

Visitors who are in doubt about what level of trail they want to attempt, or need help in interpreting these classifications, are encouraged to start with the level 1 trails, and/or to contact District staff for more information and clarification.

Level 1 Trails

General

description: These trails are intended to be relatively smooth, gently sloped, generously wide, with a firm surface for traction and low rolling resistance. Pullouts, rest areas and edge treatments are intended to make the trails as safe and comfortable to use as possible in a natural open space setting.

User Guidelines: Level 1 trails are intended to accommodate the greatest variety of physical abilities, including wheelchairs. Level 1 trails will not be open to use by horses or bicycles, due to impact on the trail surface and possible conflict with other users.

Minimum width: 4 feet

Maximum grade: 5%

Maximum cross-slope: 2%

Surface: Smooth, stable, all-weather material, texture indicating the edge of the

path. Typical surface of compacted decomposed granite fines. Some trail surface materials may incorporate a cement mixture for improved stability.

Rest areas: Minimum 4' by 6', outside of the pathway, provided at intervals of 200 to 300 feet, some of which shall include benches.

Edge treatment: Railings will be provided across bridges, around decks, floating platforms and other structures and at potentially hazardous natural drop-offs. Otherwise, curbs or railings will not typically be provided, in keeping with the District's objective of maintaining the site in as natural condition as possible. Curbs or borders will be provided at the edge of the trail where topography or vegetation does not indicate the edge.

Level 2 Trails

General description: Level 2 trails vary from Level 1 trails in two significant ways. The maximum grade, may be slightly steeper; and the surface is typically be composed of native soil, which tends to be rougher and less even.

User Guidelines: Level 2 trail users may be persons who seek, or are willing to accept, more exertion and interaction with the terrain as part of their trail experience. Bicycles and horses may be allowed on trails designated as Level 2 access. Level 2 trails may include fire and maintenance access roads that the District has inherited with the purchase of property.

Minimum width: 4 feet

Maximum grade: 8%

Maximum cross-slope: 2%

Surface: Compacted base rock, granite fines or earth. The trail surface may include irregularities that offer a bumpy ride for wheeled conveyances, but no obstacles.

Rest areas: Rest stops or pullouts will be provided at irregular intervals, and benches may or may not be provided. Informal resting and sitting spots are often afforded by banks, rocks, and logs, and turnout space is afforded at switchbacks and clearings.

Edge treatment: Curbs or borders will not typically be provided at the trail edge. Railings will be provided at potentially hazardous locations.

Level 3 Trails

General description:	These trails may be steeper and narrower than Level 2 trails, in response to the constraints of rough terrain. (Any new trails constructed by the District are at least 4 feet wide and no more than 10% grade, however encroaching bank slough-off and vegetation may reduce the available width to 3 feet).
User guidelines:	These trails are more challenging than Level 2 appropriate for persons who seek or are willing to accept some strenuous physical activity. Like Level 2, they may be open to multiple use, based on a case by case determination.
Minimum width:	3 feet
Maximum grade:	10%
Maximum cross-slope:	2%
Surface:	The trail surface is typically compacted earth, which may be uneven due to roots, rocks and trail use.
Rest areas:	Formal rest stops or pull-outs with benches are not typically provided, although informal resting and sitting spots are often afforded by banks, rocks, and logs, and turnout space is afforded at switchbacks and clearings.
Edge treatment:	Edges are not formally marked or bordered.

Non-Classified Trails

General description:	Initially, all trails that have not been inventoried and classified according to these standards will be identified non-classified. As the inventory is completed, trails that will remain non-classified will typically be fire protection and access roads and trails the District has inherited through land purchase. They may not meet the minimum access standards due to steep grades, cross-slope, width or exposure to hazards.
----------------------	------------------------------------------------------------------------------------------------------------------------------------------------------------------------------------------------------------------------------------------------------------------------------------------------------------------------------------------------------------------------------------------------------------------------------------------

User**guidelines:**

May be open to multiple use, or may be limited to certain uses on a case by case basis. Users must judge for themselves whether to use these trails based on their own research, interests and abilities.

Trail Inventory

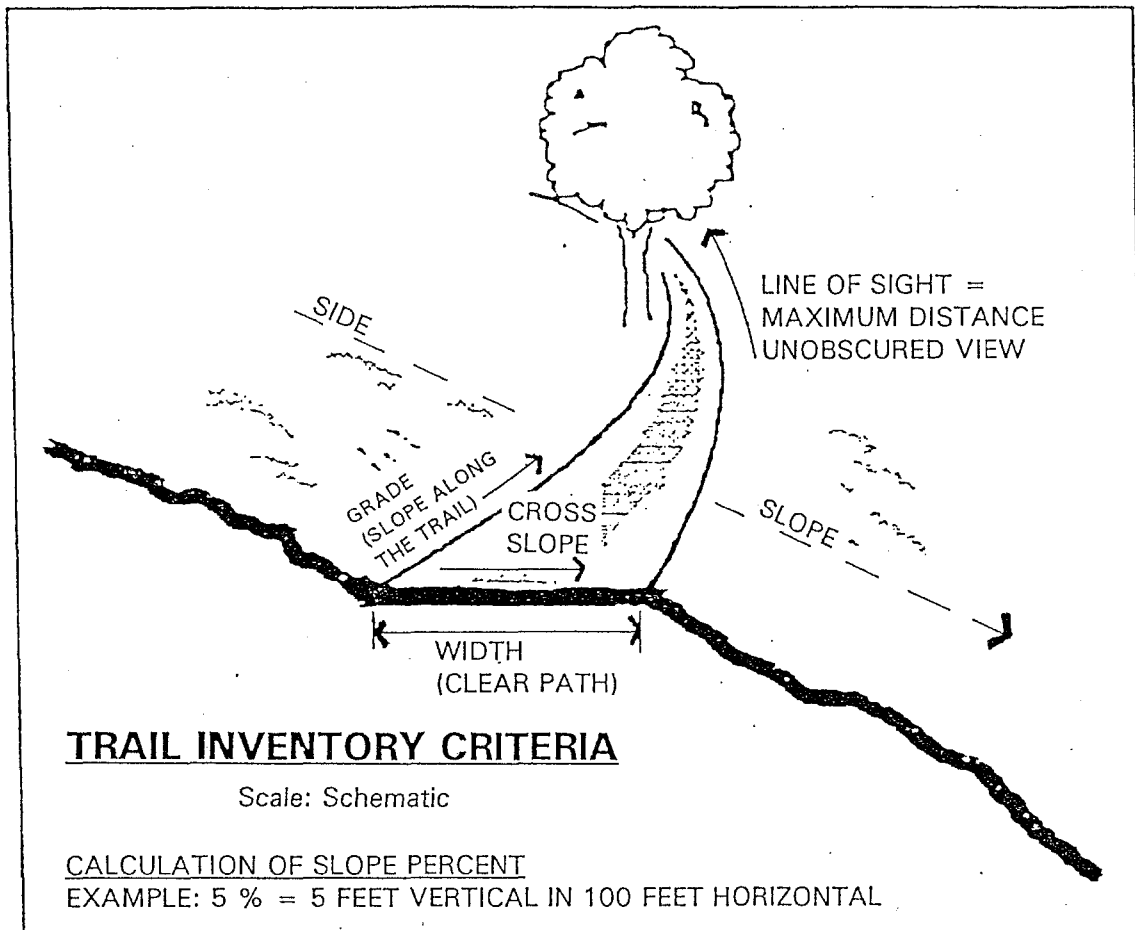
In order to classify trails and provide information for potential trail users on the conditions they will encounter when attempting specific trails, the District will inventory and record data regarding its existing trails. This information will be published in a form that is easily interpreted by the public. The data will be collected by taking measurements at regular intervals along the trails, while continually observing and noting any significant changes in condition. The classification information to be collected is illustrated in Figure 2. The following trail conditions will be inventoried:

Grade:	0 - 5%, 5% - 8%, 8% - 10%, 10% - 15%, 15% +
Width:	<4', 4' - 6', 6' + (usually roads)
Cross-slope:	0 - 2%, 2% +
Side Slope:	0 - 10%, 10% - 30%, 30% +
Line of Sight:	<50', 50' - 75', 75' - 100', 100' +
Surface:	Indicate material, compacted, rocky, loose, wet, smooth, rough
Rest Areas:	Indicate turnout, bench
Multiple use:	Indicate permitted trail use, including running, bicycles, horses, dogs; note areas particularly popular with certain user groups where applicable.
Special Interest:	Views, natural and historical interest

Completion of the trail inventory will be the responsibility of District staff, based on training and review to be provided by management and supervisors. The maximum time frame for inventory of any specific site will follow the Site Emphasis Plan Schedule for preparation and update of preserve use and management plans. Opportunities to inventory trails earlier than the scheduled Site Emphasis Plan update will include instances of trail construction projects in the area, and the general availability of District staff to work on the inventory in lieu of other duties.

The trail condition and use classification will be incorporated into the site information for the individual preserves. The information may be presented by including symbols or notes on the preserve maps, through written descriptions in the preserve brochures, or through tables of conditions corresponding to topographic profiles. Site maps and brochures are reviewed in draft form by the public, allowing the opportunity for refinements prior to publication.

The diagram presented below illustrates some of the terms used in the classification.



V. Access Objective and Policies

The following policies represent the District's position and plan for providing access to persons with disabilities.

Objective

It is the District's objective to provide access to its activities and programs, including employment, and to its open space preserves, facilities, and trails, to all persons, regardless of physical limitations.

Policies

- 1) **Steering Committee.** The District will form an Access Steering Committee, composed of interested constituents. The committee will participate in the preparation and implementation of plans to improve access for persons with disabilities. The committee will also facilitate communication with people who are interested in this issue.
- 2) **Access Plan.** Once adopted by the Board of Directors, this document shall comprise the official District policy and procedure with respect to provision of access to persons with disabilities, and shall be implemented as established herein, or as subsequently amended.
- 3) **Access Level Classifications.** The District will use the three levels of access outlined in Section IV of this document as guidelines in evaluating, designing, constructing, improving and providing information about its sites and trails. These access classifications may be amended based on further knowledge or public comment.
- 4) **Access Improvement Process and Priorities.** The planning and prioritizing of access improvements to accommodate persons with disabilities shall follow the established Relative Site Emphasis and Preserve Use and Management Plan procedures, as outlined in Section VI of this document. Commitment to access improvements shall be on the basis of specific measures or projects rather than a standard percentage of budget or proportion of construction.
- 5) **Amendment of Site Emphasis Criteria.** Section E, Accessibility to the Public, contained in addendum number 1 of the District's adopted Site Emphasis Policy, shall be amended to add the following criterion: "Does the site offer opportunities to provide access for persons with disabilities?"
- 6) **Accessible Buildings and Sites.** All District-owned buildings and other structures which are used by the public shall be constructed or renovated to meet current state and federal standards for access to persons with disabilities. Designated accessible parking areas will be provided at all sites and trailheads where formal parking is provided. Accessible public toilets will be provided at all locations where public toilets are provided.

- 7) **Removal of Physical Barriers.** The District will remove or correct the physical barriers identified in Section VII of this plan before January 26, 1995.
- 8) **Public Communication Measures.** The District will undertake the following specific measures, and other general outreach and information measures to make the public aware of the access opportunities presented by the District's lands:
 - a. The District will implement the measures outlined in Section VI, Docent and Volunteer Programs.
 - b. The District will publish and regularly update information on currently accessible trails and sites.
 - c. The District will inventory, classify and publish information about the accessibility of its trails in updating its general maps and brochures, as outlined in Section VII of this Plan.
 - d. The District will provide the means to comment on access conditions at specific District sites by posting the communication contact name, number and address at major staging areas. Typically the Planning Manager will be the primary contact on this subject.
 - e. The District will endeavor to inform and educate the public about access opportunities on its trails and sites, and in its programs, through the media and in general public affairs activities.

VI. Planning and Prioritizing Access Improvements

The prioritizing and scheduling of access improvements will be based on the District's adopted process for scheduling the inventory, planning and improvement of sites. Many of the District's existing trails are barrier free and may be categorized as type 2 or 3, or even type 1, as the inventory progresses. The District is a land acquisition and preservation-oriented organization. The planning and improvement of sites may follow well behind the acquisition of sites. Planning efforts are carefully organized and scheduled to see that limited budget resources are expended in the most efficient and beneficial way, and to respond to diverse public and individual requests for use and improvement of the land.

Site Review and Planning Process

A process has been designed and adopted by the District to ensure that site planning considers all the issues and conditions at each specific site, as well as overall District and public objectives. Numerous projects to provide access to trails and sites to persons with disabilities have been incorporated into this process, and any future plans and projects are to be considered in the same context.

The Preserve Use and Management Plan is the basis for any sort of physical change or improvement of any District land, and for decisions on any proposed use of the land. This plan will include information about the resources and physical conditions on the site, public input regarding desired uses and improvements, and development and review at staff, public, and District Board levels of these opportunities and constraints and the planning proposals.

Until a site has gone through this process, no parking, trails or other significant public improvement or use will be considered. Change is usually gradual even after formulation and adoption of the use and management plan. Existing uses and conditions are typically maintained. Proposed uses or improvements that were not originally identified in an adopted Use and Management Plan will only be considered in the context of review or amendment of the Use and Management Plan.

The schedule for preparation and review of Use and Management Plans is updated annually through review of the Relative Site Emphasis Plan, which includes a five-year Capital Improvement Plan. This review generally takes place in December and January in preparation for the District's budget year, which begins April first. The Relative Site Emphasis Plan is a way of prioritizing both short term and long term planning and development projects for all District sites. The Capital Improvement Plan (CIP) corresponds to the schedule for preparation of Use and Management Plans and is part of the District's overall budgeting process. The CIP identifies significant planning and construction projects within the next five years, including trails. The capital improvement program is the best indication of what the District is planning to do to make its trails and sites accessible to people with disabilities.

Chart A, presented in the following pages, presents the trail projects currently in the Capital

Improvement Plan, and highlighting those that are Level 1, or Whole Access.

Chart B, presents the schedule for preparation and update of preserve use and management plans, which comprises the general schedule for inventory of existing trails on a site basis and for consideration of new projects.

Budget and Schedule for Access Improvements

Chart A indicates that the projects budgeted by the District for new or improved Level 1/ Whole Access trails in the FY 92/93 version of the plan comprise from 26% to 84% of the annual trail construction budget over the next five years, and comprise 40% of the total trail budget for the five year period.

Due to the current state budget deficit, there is a likelihood that the District's revenues will be significantly reduced. The timing and impact of such cuts is unknown at this time. The District Board has taken a conservative approach to spending in anticipation of the cuts. In any case the effect will be extension of the schedule for acquisition and site development compared to the 92/93 plans presented here. Public participation is encouraged during the review and adoption process for the 93/94 budget, which will take place in January '93, and in any subsequent amendments in response to new budget information.

Site Emphasis Criteria

The adopted criteria for making general site emphasis and site plan decisions, contained in Addendum number 1 of the District Site Emphasis Policy, are reproduced below. With the adoption of this Access Plan, the specific criterion of providing access for persons with disabilities will be added to Section E, Accessibility to the Public, as highlighted in bold type:

A. Public Interest

Does the public express a desire, either directly or indirectly, to utilize the site? This may be evident by existing use which occurs regardless of land status and/or by interest communicated to staff or Board.

B. Geographical Location

Does or will the site receive high levels of use and pressure for recreational development due to its close proximity to the urban area?

C. Regional Significance

How significant is the site in relationship to other existing public lands, and does it serve

as an important link (providing trail connections) between or leading to other facilities?

D. Attractiveness of Natural or Developed Features

Are there features on the site (such as a unique landscape, historical building, parking areas, trails, etc.) which are of particular interest and attractiveness or usefulness to the public?

E. Accessibility to Public

Can the District's general public (not only site neighbors) gain access to the property from public roads or adjacent public lands or if not, is there the potential for improving this access (parking) on District or adjacent public lands? **Does the site offer opportunities to provide access for persons with disabilities?**

F. Lack of Existing Open Space/Parklands for Public Use

Are there no other nearby open space recreational experiences (including existing developed preserves) accessible to the public on a regional basis? Such facilities if accessible and minimally developed would possibly alleviate the need for development of the site in the near future.

G. Geographical Distribution

How well does the site serve as a regional facility, and will its development better distribute open space opportunities throughout the District?

H. Manageability of Site

Can the site be readily managed presently and in the future if further development were to occur? This could be related to the number of access points and the adequacy of patrol routes, presence of an agricultural tenant, a renter, a Ranger residence, or other lease arrangement.

I. Costs Measured Against Benefits

To what extent do the benefits to the public exceed the costs associated with development and management of the site? Some sites will tend to yield great benefits at little costs.

J. Physical and Psychological Carrying Capacity

Is the site capable of providing open space experiences for large numbers of visitors without degrading the resource or psychologically reducing the quality of the experience? Is there the potential for expanding facilities such as trails without exceeding the carrying capacity?

CHART A - 5 YEAR CAPITAL IMPROVEMENT PLAN
TRAIL CONSTRUCTION & IMPROVEMENT PROJECTS (Revised 10/10/92)

- Level 1, Trail Projects
Access Levels - 1 - Fully Accessible
? - Unknown Until Inventory & Design
Int. - Internal to other existing trails which may require upgrade to provide access
2 - Level 2 Access
3 - Level 3 Access

Preserves Trail Projects	U&M Adopted	Access Level	FY 1992/93	FY 1993/94	FY 1994/95	FY 1995/96	FY 1996/97	Outside Funding	Explanation and Notes
1. Skyline Ridge									
Trail to LROSP (LWCF)	Yes	3	65000					26000	Extended 1 year; permit came too late
Bullis Bypass Trail	Yes	?, Int.			15000			Possible	
Lambert Creek Trail	No	?, Int.			25000			Possible	Anticipated high priority in U&M plan
2. Monte Bello									
Gold Mine Trail	Yes	?, Int.				35000			
Stevens Creek Bridge	Yes	?, Int.	10000						Extended 1 year; limited LM resources
Disc Line Trail	Yes	?, Int.	15000						
Whole Access to Vista	Yes	1			10000				
3. Rancho San Antonio									
Whole Access Trail	Yes	1					15000		Expenditure not previously scheduled
4. Purisima Creek									
Whole Access Trail	Yes	1			25000				
5. Windy Hill									
Corte Madera Trails	Yes	?	10000						Extended 1 year; limited LM resources
Sausal Trail and Road	Yes	1		58000				Possible	Expanded to include whole access
Meadow Trail	Yes	?, Int.			10000			Possible	Extended 1 year; combine with Bozzo
Bozzo/Midlevel Trail	Yes	?, Int.			40000			Possible	
6. St. Joseph's Hill									
Trail to Hilltop	Yes	?				10000			
7. Ravenswood									
Trail to Palo Alto	Yes	1				7500 PS	75000	Possible	Extended 1 year; pending reclamation
8. El Corte Madera									
9. Picchetti Ranch Area									
Trail above Pond	Yes	?, Int.		15000					
Trail to Cosigny	Yes	?, Int.		10000					
10. Saratoga Gap									
11. Los Trancos									

Preserves Trail Projects	U&M Adopted	Access Level	FY 1992/93	FY 1993/94	FY 1994/95	FY 1995/96	FY 1996/97	Outside Funding	Explanation and Notes
12. Long Ridge									
Trail to Skyline	Yes	3	10000						
Jikoji Bypass Trail		?, Int.		10000					Anticipated reintroduced project
13. Pulgas Ridge									
Cordilleras Trail (LWCF)	Yes	1	57000					28300	Cost adjusted for public bid process
South Canyon Trail	Yes	?					20000	Possible	Expenditure not previously scheduled
Edmonds Trailhead	Yes	?			10000			Possible	
14. Russian Ridge									
Vista Trail (Prop 70) Level	Yes	3	10000					10000	
Loop Trails (LWCF)	Yes	?, Int.		48000				24000	Accelerated to complete grants
Nature Trail (LWCF)	Yes	?, Int.			26000			12000	Accelerated to complete grants
15. La Honda Creek									
Dyer Trail to PGE	Yes	?						Possible	Deferred; combine with parking lot
Hwy 84 to Dyer Trail	Yes	?						Possible	Deferred; combine with parking lot
16. Teague Hill									
17. Fremont Older									
Seven Springs Road	Yes	?, Int.				5000 PS	15000	Possible	Expenditure not previously scheduled
18. Kennedy Road Area									
19. Windmill Pasture Area									
Upper Black Mtn Trail	No	?, Int.					15000	Possible	Expenditure not previously scheduled
20. Stevens Creek Shoreline									
21. Coal Creek									
Vista Point Trail	Yes	?, Int.					10000		Extended 3 years; grants accelerated
Melville Trail	Yes	3					10000		Extended 3 years; grants accelerated
22. El Sereno									
23. Foothills									
Foothills Park Trail	No							Possible	Joint project, scheduled but on hold
24. Thornewood									
Upper Bypass Trail	Yes	?		15000					

Preserves Trail Projects	U&M Access Adopted Level	FY 1992/93	FY 1993/94	FY 1994/95	FY 1995/96	FY 1996/97	Outside Funding	Explanation and Notes
25. Mt. Umunhum Area								
26. Cathedral Oaks Area								
TOTAL TRAIL DOLLARS		177000	156000	161000	57500	160000	177000	
LEVEL 1 TRAIL DOLLARS		(57000)	(58000)	(35000)	(7500)	(90000)	(247500)	
% LEVEL 1 TRAIL SPENDING		(32%)	(44%)	(26%)	(33%)	(84%)	(40%)	

 Level 1, Trail Projects

Access Levels -

- 1 Fully Accessible
- ? Unknown Until Inventory & Design
- Int. Internal to other existing trails which may require upgrade to provide access
- 2 Level 2 Access
- 3 Level 3 Access

CHART B - RELATIVE ORDER OF SITES / TARGET USE AND MANAGEMENT REVIEW SCHEDULE

Attachment 2
REV. 10.20.92

Relative Order of Sites	Last Review	Five Year Use and Management Plan Target Review Schedule																			
		1992				1993				1994				1995				1996			
		1st Qtr	2nd Qtr	3rd Qtr	4th Qtr	1st Qtr	2nd Qtr	3rd Qtr	4th Qtr	1st Qtr	2nd Qtr	3rd Qtr	4th Qtr	1st Qtr	2nd Qtr	3rd Qtr	4th Qtr	1st Qtr	2nd Qtr	3rd Qtr	4th Qtr
1. Skyline Ridge	07/87	■																			
2. Monte Bello	12/89													■							
3. Rancho San Antonio	04/90														■						
4. Purisima Creek	02/89																			■	
5. Windy Hill	11/88											■									
6. St. Joseph's Hill	09/87	■			■																
7. Ravenswood	04/90																	■			
8. El Corte de Madera	09/89								■												
9. Picchetti Ranch Area	01/88						■														
10. Saratoga Gap	03/89																	■			
11. Los Trancos	07/87												■								
12. Long Ridge	07/90																		■		
13. Pulgas Ridge	08/87				■	■															
14. Russian Ridge	02/87																				
15. La Honda Creek	03/88														■						
16. Teague Hill										□											
17. Eremont Older	11/90																		■		
18. Kennedy Road Area Sierra Azul	07/89								■												
19. Windmill Pasture Area Rancho San Antonio	04/90														■						
20. Stevens Creek Shoreline	05/90																■				
21. Coal Creek	10/87			■	□																
22. El Sereno	11/87								□												
23. Foothills	02/90																			■	
24. Thornewood	11/87					■															
25. Mt. Umunhum Area Sierra Azul	07/89									□											
26. Cathedral Oaks Sierra Azul													■								

□ Interim Use and Management Plan Review ■ Comprehensive Use and Management Plan Review

VII. Volunteer and Docent Programs

Background

The District has operated a Docent Program, supported by a staff Docent Coordinator, since soon after the District's formation in 1972. The District has operated a Volunteer Program, supported by a half-time staff Volunteer Coordinator, since 1986. In addition to the paid staff, the District provides a modest budget for materials and expenses of the programs. All other participation is on an unpaid volunteer basis.

Program Objectives

The basic objectives of the Docent Program are to help educate the public about the natural history and resources of the District's lands; to generate public understanding and support for the District's open space preservation mission; to involve the public in the District's activities; and to enhance the visitor experience.

The basic objectives of the Volunteer Program are similar to those of the Docent Program; to generate public understanding and support for the District's open space preservation mission; to involve the public in the District's activities; and to conserve the District's financial resources by using volunteers to assist paid staff in completing maintenance and improvement projects.

Docent Program Description

The Docent Program typically includes from 50 to 80 volunteer docents. Twice per year, in the Spring and the Fall, the District provides docent training in natural history. New docents may start in either Spring or the Fall, and are expected to attend both training sessions. There are several optional training sessions offered each year in a variety of subjects. Informal docent activity planning meetings and social events are held throughout the year.

Docent activities are focused on organizing and leading walks and hikes in the open space preserves, with interpretation of natural resources and human history provided by the docents. Most of the ideas for the walks, hikes, and talks come from the docents themselves. They vary widely in subject, location, length and difficulty. Any group of 10 or more persons may request a special docent-led hike or talk, which may be custom-tailored to their needs and interests.

Public awareness of the Docent Program is provided through general District publications such as the quarterly general newsletter, the annual report, the Visitor Guide and site-specific maps and brochures. Direct access and participation is provided by a monthly "Walks and Hikes" newsletter that is distributed to a large general mailing list and sent to local newspapers for publication. The District has a small Nature Center building at Alpine Pond in the Skyline Preserve which is used for research and interpretive activities.

Volunteer Program Description

The Volunteer Program operates on a "drop in" basis. There is no required training or membership. The Volunteer Coordinator organizes at least one event or project per month, consisting of a basic resource restoration, maintenance or construction project in the District preserves. Interested members of the public can work alongside District staff to improve or protect natural resources or public access facilities. The District provides tools, equipment, basic supervision, and usually refreshments, for these one-day projects. A Volunteer Newsletter, published quarterly, informs the public of upcoming projects, and reports on the participation and progress on past projects. Like the Docent Program, public awareness of the Volunteer program is promoted by general District publications.

In addition to specific projects, the Volunteer Coordinator arranges for the use of public volunteers and community service assignees in administrative office tasks such as filing and mailing. The District also makes use of adult and juvenile justice system work release programs and the California Conservation Corps to complete maintenance and construction projects. This assistance may or may not be combined with public volunteer efforts.

Measures to Improve Program Access for Persons with Disabilities

The accessibility of the Docent and Volunteer programs is facilitated because they are flexible in format and content, and easily adapted to the specific needs of the participants, including the Docents themselves. Also, because they are based on public participation, any group with special interests is free to design and carry out their own program with the help of District staff and resources, or to ask the District to design a program for them. Expansion of access for persons with disabilities to these programs will be based on wider outreach and communication of the opportunities, and on input from, and participation of, persons with special needs and interests.

The following specific measures will be implemented by the District in order to expand access to its Docent and Volunteer Programs:

1. Expand the mailing list for the Docent "Hikes and Walks" and the "Volunteer Voice" newsletters to include organizations and groups that are concerned with serving people with disabilities. (By January, 1992).
2. Encourage and act on specific information or suggestions for participation by persons with disabilities in the programs, either through the efforts of persons already in the programs or by encouraging other individuals or groups to participate in a way that directly or indirectly benefits access for persons with disabilities.
3. Ensure that the Docent and Volunteer Coordinators, and the docents and volunteers themselves, are aware of the interests and needs of persons with disabilities, and help them to

provide the accommodations that may be necessary. (Publish article in upcoming newsletter, cover issue generally in upcoming training or meetings, and cover specific measures as they are requested or identified).

4. Encourage and recruit people with disabilities to participate in the volunteer and docent programs and to make use of open space resources in general.

VIII. Physical Barriers to be Corrected

An inventory of all District sites has been completed to identify physical barriers to program accessibility. The inventory forms are attached as Appendix A. The inventory identified the following physical barriers to general program accessibility, existing as of August, 1992, which are to be corrected by January 26, 1995:

Parking Areas, Various Preserves

The following parking areas lack designated accessible parking spaces, which will be added as noted below:

<u>Skyline Area Preserves</u>	<u>Number of Spaces</u>	<u>Number of Required Accessible Spaces</u>
1. Los Trancos	25	1
2. Monte Bello	45	2
3. Purisima Creek Redwoods (Higgins-Purisima)	10	1
6. Windy Hill	10	1
<u>Foothills Area Preserves</u>		
1. Fremont Older	10	1
2. Monte Bello, (Picchetti Ranch)	35	2
3. Rancho San Antonio Permit Lot	12	1
<u>Total number of signs required</u>		9

Monte Bello Open Space Preserve, Black Mountain Pack-in Camping Area

1. Replace restroom facility with wheelchair accessible unit.
2. Publish permit procedures for backpack camp to allow drive-in access to visitors with disabilities.

Fremont Older Open Space Preserve

1. Replace temporary restroom with a wheelchair accessible temporary restroom.

Rancho San Antonio Open Space Preserve

1. Install two self-contained accessible restrooms near Deer Hollow Farm (Project in FY 92/93 budget, currently pending use permit approval).

Trailhead Gates and Stiles

Most District trailheads feature open access or "block type" stiles which accommodate wheelchairs. Where physically feasible, the District will add accessible (block type) stiles at trailheads that have only step-over stiles.

VIII. Administration of the Access Plan

The District's planning manager, Randy Anderson, is the person responsible for administration of the Access Plan and response to access issues. Comments or questions may be directed to Mr. Anderson at the District administrative offices.

The District has formed a steering committee of persons who are interested in reviewing and making recommendations on the implementation of Access Plan. Please contact Randy Anderson at the District for more information, or if you are interested in participating on the committee.

The District publishes, and regularly updates, information on access conditions, entitled "Access Opportunities", which may be obtained by calling, writing or visiting the District offices.

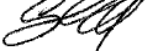


Midpeninsula Regional
Open Space District

Memorandum

DATE: March 11, 2015

MEMO TO: MROSD Board of Directors

THROUGH: Stephen E. Abbors 

FROM: Gretchen Laustsen, Planner II

SUBJECT: Informational Report on the Accessibility Plan Update

SUMMARY

The Fiscal Year (FY) 2015-16 Action Plan includes updating the District's Accessibility Plan. The American with Disabilities Act (ADA), which was enacted in 1990, is a civil rights law that prohibits discrimination of people with disabilities in employment, transportation, public accommodation, communications, and governmental activities. ADA protection also applies to the provision of programs, activities and services offered to the public by a state or local government. To comply with the 1990 ADA, the Board adopted the "Access Plan for Persons with Disabilities ('Accessibility Plan')" in January 1993 (refer to Attachment). This informational memo provides an overview of the ADA requirements and the necessity for an update to the District's Accessibility Plan.

DISCUSSION

Since the adoption of the Accessibility Plan, ADA regulations and accessibility guidelines have changed. Amendments have been made to the ADA that broadens the scope of who is considered disabled under the law and expand accessibility requirements for recreational facilities. Also, the Federal 2010 ADA Guidelines for Accessible Design and Accessibility Guidelines for Outdoor Developed Areas (effective 2012) and the U.S. Access Board's updated accessibility guidelines for the design of accessible facilities and programs have been issued to define and clarify compliance requirements for agencies that provide outdoor recreation opportunities.

Since 1993, the District has also expanded many of its programs, activities and services that are subject to ADA regulations. In addition to adding nearly 25,000 acres to the regional greenbelt, the District's operations and programs have grown significantly. For example, the organization has increased from less than 50 employees in the 1990s to 120 in 2015, with additional staffing anticipated as part of the Financial Operational Sustainability Model (FOSM). In addition, the volunteer program has grown from less than 100 volunteers in the 1990s to over 600.

To ensure that the District is complying with the updated federal regulations and meeting the access objectives and policies of the Accessibility Plan, an update to the Accessibility Plan is needed that includes the following:

- Implementation of ADA awareness training for staff and volunteers.
- Review, update and implementation of ADA policies and procedures.
- Updated assessment of facilities, programs and services.
- Transition plan to address necessary structural modifications, program accessibility guidelines, standards and resources.

The District will need to contract with accessibility experts to assist with the Accessibility Plan Update and ADA training of staff and volunteers. The General Manager has directed staff to proceed with developing a Request for Proposal for accessibility consulting services to assist with the Accessibility Plan Update. This contract is expected to be over \$25,000 and will be brought to the Board for approval next fiscal year. On a related note and in the interim, the General Manager will be bringing to the Board a new policy on Other Power-Driven Mobility Devices for Board consideration.

Attachment: Agenda Report R-93-08 regarding Plan for Compliance with the 1990 Americans with Disabilities Act