



Midpeninsula Regional  
Open Space District

R-18-139  
Meeting 18-40  
November 28, 2018

## AGENDA ITEM 8

### AGENDA ITEM

Proposed Trail Names for Bear Creek Redwoods Open Space Preserve Phase I Trails

#### GENERAL MANAGER'S RECOMMENDATION(S)

Approve the proposed Phase I trail names for Bear Creek Redwoods Open Space Preserve, as set out in this report and as recommended by the Legislative, Funding, and Public Affairs Committee.

#### SUMMARY

In preparation for the spring 2019 public opening of the west side of Bear Creek Redwoods Open Space Preserve (Preserve), the General Manager recommends trail names for the four new trail segments. The proposed trail names are:

- *Upper Lake Loop Trail* for the easy access trail circling Upper Lake;
- *Alma Trail* for the trail segment that will become part of a multi-use, through-Preserve trail in Phase II;
- *Redwoods Springs Trail* for the trail that will branch off and rejoin what will become the multi-use, through-Preserve trail in Phase II; and
- *Madrone Knoll Trail* for the spur trail that will access the highest point in the Preserve.

The proposed trail names are consistent with the naming criteria and process specified in Board Policy 5.01 for Site Naming, Gift and Special Recognition. The Legislative, Funding and Public Affairs Committee (LFPAC) reviewed the proposed trail names on October 30, 2018 and voted unanimously to forward these trail names to the full Board. Pending Board approval, the trail names would be implemented through new signs, brochure maps, graphics, and the District website.

#### DISCUSSION

Phase I of the Preserve Plan will open approximately six miles of trail to hiking and equestrian use on the west side of the Preserve. The western Preserve zone was prioritized for public access due to its scenic redwood forest and existing network of roads. These trails pass through a variety of habitats, most notably dense, closed canopy fir and redwood forest at middle to high elevations.

Per Board Policy 5.01 for Site Naming, Gift and Special Recognition (Attachment 1), Preserve trails shall ordinarily be named after: a) geographical, botanical or zoological identification; or b)

historical persons, uses, or events associated with the site. Four new distinct trail segments require formal naming. The trail segments and proposed names are described below and correspond to the trail segment numbers on the Phase I Trails Plan (Attachment 2):

1. *Upper Lake Loop* - This 0.25-mile trail circles Upper Lake and provides an easy access loop adjacent to the new Alma College Parking Area. While Upper Lake is a former mill pond that dates back to the mid-1800's, the loop trail will have interpretive stops describing the various periods and layered history of the site. Rather than recognizing a particular era of the site, the proposed trail name for this easy access loop more broadly identifies the geographical feature.
2. *Alma Trail* - This 2.5-mile trail connects the Alma College Parking Area, located east of Bear Creek Road, to the west side trails via a new connector trail and the Bear Creek Road at-grade crossing. Once on the west side of Bear Creek Road, the trail joins the existing, eight to ten-foot wide roadbed. In Phase I, this trail segment will traverse the densely wooded western zone of the Preserve, pass through fir and redwood forest, and bay and oak woodland, eventually linking to the Madrone Knoll Trail. In Phase II, this trail segment will become part of the approximately five mile multi-use, through-Preserve trail, connecting the northeastern corner of the Preserve near Highway 17, to the trail crossing over Bear Creek Road near Alma College and joining the existing trails that will lead to a future trail segment that will connect to Summit Road. The name Alma (the Spanish word for soul) is identified with many places within and near the Preserve. The town of Alma (now inundated by Lexington Reservoir) was the namesake for Alma Dale (James L. Flood's estate) and Alma College. Webb Creek, one of four significant streams flowing throughout the Preserve, was originally named Alma Creek. As such, the name of Alma recognizes the broader history of the surrounding area.
3. *Redwood Springs Trail* - This 1.5-mile trail will branch off and rejoin the Alma Trail and what will become the multi-use, through-Preserve trail in Phase II. This segment crosses the headwaters of Webb Creek, passes through fir and redwood forest, and oak and bay woodland, and provides views of Sierra Azul Open Space Preserve to the east. Higher in elevation than the Alma Trail, this segment allows visitors an opportunity to experience the mountain fog that supports the Preserve's coastal redwoods. The headwaters of Webb Creek, emerging from the drainage above this trail segment, is an example of the many natural streams and springs that were developed to support the Preserve's former estates, historic gardens, and stables.
4. *Madrone Knoll Trail* - The 1-mile scenic trail extension off the future multi-use, through-Preserve trail accesses the highest point in the Preserve, known as Madrone Knoll at an elevation of 2,400 feet. The trail provides access to coastal views shaded by oaks and ancient madrones.

## FISCAL IMPACT

Selection of trail names will not result in any additional fiscal impact to the Fiscal Year 2018-19 budget. The addition of these names on new trail signs and brochures are already included as part of the existing Fiscal Year 2018-19 budget.

## **BOARD COMMITTEE REVIEW**

The Legislative and Public Affairs Committee (LFPAC) considered the proposed new trail names on October 30, 2018 (R-18-118). Committee members inquired about whether trail segments that will be opened in future phases were considered when recommending trail names. Staff assured the Committee that the trail names were selected with future trail segments and potential names in mind. LFPAC unanimously voted to forward the proposed trail names to the full Board for consideration.

## **PUBLIC NOTICE**

Public notice was provided as required by the Brown Act.

## **CEQA COMPLIANCE**

Selection of trail names is not a Project as defined by the California Environmental Quality Act.

## **NEXT STEPS**

Following Board approval, staff would incorporate the new trails names for the Phase I area trails in the new sign orders, revised brochure maps, and on the District website. New signs and signboards will be produced and installed in preparation for the grand opening of Bear Creek Redwoods in spring 2019.

### Attachments

1. Policy 5.01 Site Naming, Gift, and Special Recognition Policy
2. Bear Creek Redwoods Open Space Preserve Phase I Trails Plan

Responsible Department Head:  
Jane Mark, AICP, Planning Department

Prepared by:  
Gretchen Laustsen, Planner III, Planning Department

## Midpeninsula Regional Open Space District

## Board Policy Manual

<b>Site Naming, Gift, and Special Recognition</b>	<b>Policy 5.01 Chapter 5 – Historical/Cultural</b>
Effective Date: 8/25/93	Revised Date: 11/13/13
Prior Versions: 8/25/93, 9/14/94, 6/24/98, 9/12/01, 10/8/08, 1/13/10, 10/27/10	

I. SITE NAMING

All District site names and signs should be kept as simple and functional as possible. When a property is acquired, either as an addition to an existing preserve or for the establishment of a new preserve, a name will be recommended in the Preliminary Use and Management Plan. In most cases, "open space preserve" is appropriate as part of the name; however, there may be circumstances when another designation may be used. In some cases, a temporary name may be retained until the next Comprehensive Use and Management Plan review.

A. Open Space Preserves

The name given to each open space preserve should be general enough to remain suitable if the site is enlarged, but specific enough to give its location some significance. Properties added to an open space preserve may not always be contiguous with that preserve.

1. Preserves shall be named after:
  - a) Geographical features of broad, general significance to the preserve;
  - b) Historical persons, cultural names, uses, or events broadly associated with the locale.
2. Preserves shall not be named after any individuals other than historical persons as noted above.

B. Preserve Areas, Trails, Site Improvements, Historic Sites and Unnamed Natural Features

This designation refers to specific locations, land formations, trails, natural and physical features, staging areas and other site improvements, and areas of significance within open space preserves. Recognition of significant land gifts, including "bargain" purchases, will be negotiated at the time of the gift or bargain purchase.

1. Preserve areas, trails, site improvements including benches and bridges, historic sites and previously unnamed natural features shall ordinarily be named after:
  - a) Geographical, botanical or zoological identification;

b) Historical persons, uses, or events associated with the site, or persons and organizations listed in Section III: "Special Recognition".

2. Preserve areas, trails, site improvements, historic sites and unnamed natural features may in rare instances be named after a living individual who has made an outstanding contribution to the District, subject to approval by the Board of Directors.

## II. GIFT RECOGNITION

The purpose of the gift recognition policy is to provide an opportunity for the District to recognize and commend individuals or groups that have made significant contributions of cash, equipment, materials, goods or professional services toward the enhancement of the District, its programs, and its facilities.

### A. Unsolicited Cash Gifts:

Up to \$25	Postcard of thanks
\$26 to \$499	Letter signed by General Manager
\$500 to \$1,999	Letter signed by President of the Board
\$2,000 to \$4,999	Letter signed by President of the Board and District gift item (note cards, etc.)
\$5,000 to \$9,999	Letter signed by President of the Board and framed photograph of favorite District preserve
\$10,000 or more	Letter signed by President of the Board and Resolution and framed photograph of District preserve and mention in a District publication*

\*These items will be provided only if desired by the donor.

## III. SPECIAL RECOGNITION

The Legislative, Funding and Public Affairs Committee (LFPAC) shall be the committee designated to discuss all requests that meet the criteria of the policy for special recognition, made by members of the Board of Directors or by members of the public, including bench memorials and the naming of bridges, and after deliberation shall decide which requests will be referred to the full Board for a vote.

The District places benches in its preserves for three distinct purposes:

### A. District Rest Benches

These benches provide constituents with a place to rest. District staff places these benches without involving a District committee or the full Board. Regular benches must be either a backed or a backless standard bench as described in Section V below.

### B. Constituent Memorial Benches

These are benches which have been requested by constituents in order to honor a member of the public and are funded by the requestors who must pay \$5,000 for the lifetime cost of the bench. LFPAC discusses requests for these benches and decides which requests will be referred to the full Board for a vote. Requests must be in reference to a deceased significant supporter or a volunteer, as defined in the following sections.

a) Constituent memorial benches shall only be placed in locations that have been pre-determined by the District and approved by the Use and Management committee and by the full Board of Directors.

b) If a request for special recognition is approved by the Board of Directors, the requestor(s) shall pay for the cost of constructing, installing and maintaining a memorial bench by contributing \$5,000 to a Memorial Bench Fund to cover the lifetime cost of the bench. The District will put this fund into an interest-bearing account which will be used solely for memorial bench construction, installation, repair, and maintenance.

c) Bench plaques will be 2 x 6 inches in size.

d) Benches must be one of the two District standard bench designs.

#### C. District Memorial Benches

These are benches which are installed by the District in response to requests by members of the Board of Directors to honor deceased "Founders," "Significant Supporters", and "Volunteers".

a) LFPAC can initiate a bench request and refer a decision to the full Board or individual Board members can initiate a bench request which will be referred to LFPAC for discussion before it is referred to the full Board for a final decision. Honorees must be deceased "Founders", "Significant Supporters", and "Volunteers" (per policy Section III D below).

b) For these benches there are no design specification limits or limits on their location. The District will pay for the lifetime cost of the bench.

#### D. Deceased Founders, Significant Supporters, and Volunteers

"Founders", "Significant Supporters", and "Volunteers" are eligible for special recognition, including memorials.

"Founders" shall be defined as an individual or group of individuals who participated in the formation of the District, or were significant supporters of the formation of the District.

"Significant Supporters" shall be defined as individuals or group of individuals who have shown conspicuous or noteworthy support for the District through extraordinary contributions of time and effort to the advancement of the goals, philosophy and mission of the District.

"Volunteers" shall be defined as individuals or groups of individuals who donated their time to the District by working for the District's docent or volunteer program.

#### IV. RECOGNITION OF HISTORIC SITES

A. A recognition monument, normally in plaque form, may be considered by the Board if it is in relation to a specific existing building or other remaining structure of significant historic value. In such cases, the plaque will be affixed or in close proximity to the structure itself. If there is no structure, then recognition may be considered for inclusion on District informational materials or trail signage. Such a site, in the absence of a building or structure, will ordinarily not be physically marked except as determined by the Board on a case-by-case basis as part of the Use and Management planning process for the corresponding open space preserve.

Any Board-approved memorial names shall be included in site brochures, maps, or other informational materials.

#### V. STANDARD BENCH DESIGN SPECIFICATION

A. District Rest Benches and Constituent Memorial benches, described in III(A) and (B) above, are limited to either of the two following standard bench designs:

Backed bench:

Dumor - Bench 88, recycled plastic slates (color: CEDAR), steel leg supports  
(color: BLACK, IMBEDDED)  
6' or 8' lengths

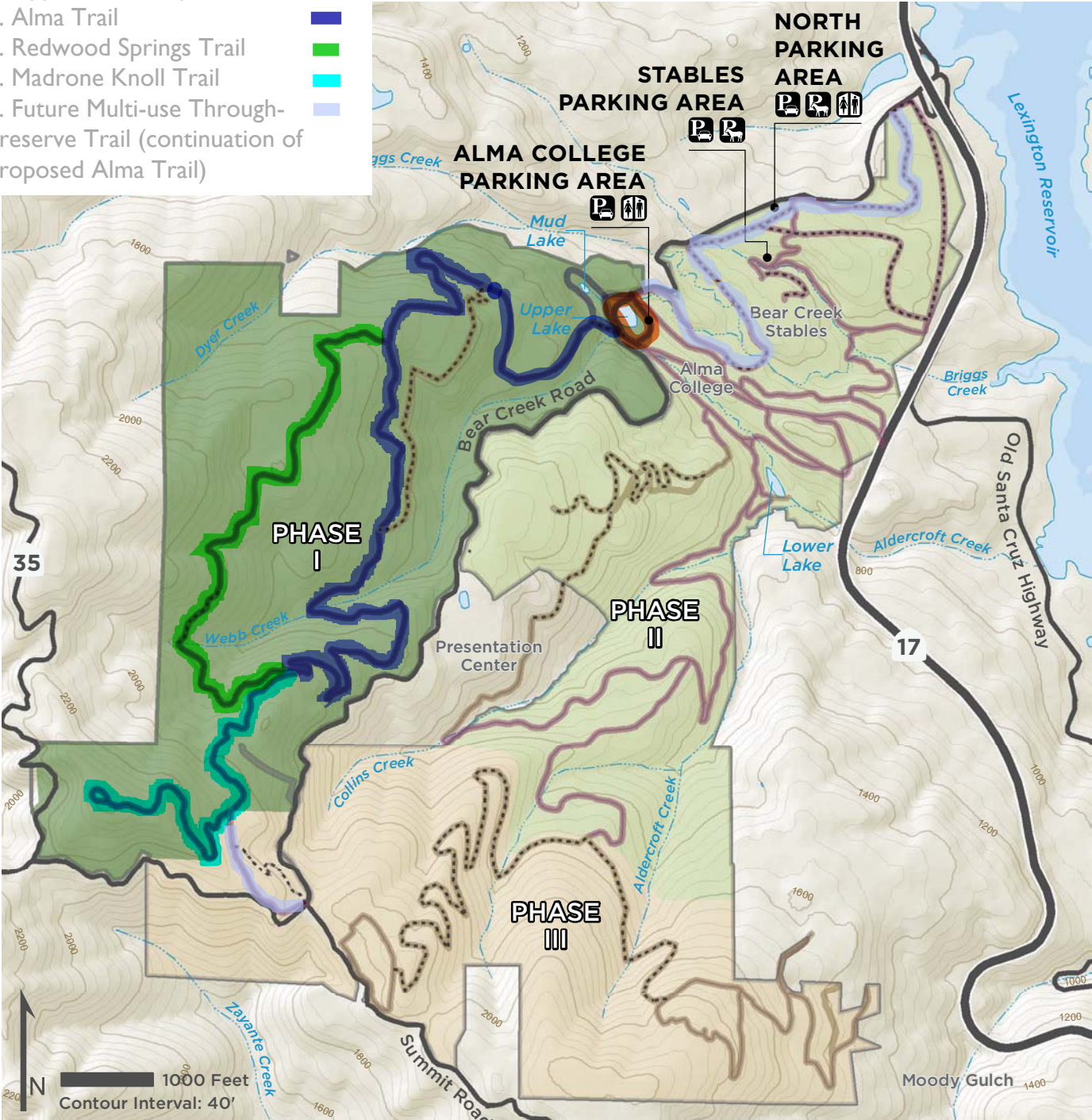
Backless bench:

Dumor - Bench 103, recycled plastic slates (color: CEDAR), steel leg supports  
(color: BLACK, IMBEDDED)  
103-60PL 6' long, 3 supports  
103-80PL 8' long, 3 supports

B. LFPAC can at any point bring designs to the Board that differ from the District's standard bench designs.

Phase I Trails

- 1. Upper Lake Loop
- 2. Alma Trail
- 3. Redwood Springs Trail
- 4. Madrone Knoll Trail
- 5. Future Multi-use Through-Preserve Trail (continuation of proposed Alma Trail)



Bear Creek Redwoods Open Space Preserve

Phase I Trails

LEGEND

PUBLIC ACCESS PHASING

- Phase I, Years 1-3
- Phase II, Years 4-10
- Phase III, Years 11-20