



Midpeninsula Regional
Open Space District

R-21-97
Meeting 21-20
July 14, 2021

SPECIAL MEETING AGENDA ITEM 1

AGENDA ITEM

Design of Administrative Office Interpretive Elements

GENERAL MANAGER'S RECOMMENDATIONS *den*

1. Approve designs for two time-sensitive public interpretive elements being fabricated and installed in the future Administrative Office located at 5050 El Camino Real in Los Altos: (1) three exterior interpretive signs; (2) four exterior banners.
2. Approve designs and/or provide any additional direction for three additional, less time-sensitive public interpretive elements: (1) interior topographic relief model; (2) interior interpretive wall exhibit; (3) interior wall quotes.

SUMMARY

The Midpeninsula Regional Open Space District (District) contracted with EDX Exhibits to provide planning and design services for public-facing interpretive elements for the future Administrative Office located at 5050 El Camino Real. The project goal is to provide members of the public who visit the office with opportunities to create meaningful personal connections to interpretive themes inspired by the District's work and mission. The General Manager is seeking Board of Directors (Board) design approval of various interpretive elements. As designed, the fabrication and installation of the proposed interpretive elements fall within the project budget.

BACKGROUND

Since purchasing the current 330 Distel Circle, Los Altos office building in 1990, the District's success in growing the regional greenbelt, restoring natural lands, and expanding public access has created the need for additional office space. As a forward-thinking and fiscally prudent public agency, the District planned for its long-term office space needs by setting aside general reserve funds. After exploring alternatives, purchasing and repurposing an existing, larger office building and selling the current building to offset costs emerged as the most cost-efficient, environmentally sound long-term solution.

At the July 2017 public meeting, the Board adopted a resolution to enter into a purchase and sale agreement for the building located at 5050 El Camino Real in Los Altos ([R-17-90](#)). Escrow closed on February 1, 2019. Construction to repurpose the building to meet District needs in fulfilling its mission and serving the public started in February 2021 and is scheduled to be completed in March 2022. This new office space presents multiple opportunities to enhance public awareness of the District and foster a deeper connection to the local natural resources and iconic Bay Area landscapes through informative and inspirational interpretive elements. To

proceed with the planning and design of the interpretive elements project, the District completed a competitive consultant selection process in the fall of 2020, entering into a contract with EDX Exhibits (EDX) ([R-20-133](#)). EDX was chosen based on their design quality and relevance, expertise and competency, commitment to accessibility and diversity, and overall cost.

The Board approved the interpretive project goals and themes as part of a project brief presented by EDX on January 27, 2021 ([R-21-18](#)). Draft design schematics were presented on March 10, 2021 ([R-21-37](#)) and the Board gave direction on an overall design approach and general tone, mood, and color palette for the project. The Board selected Scheme 1: Bringing the Preserves to the People, which focuses on bringing the preserve experience into the office space by exploring multiple habitats found on District lands. This scheme uses natural and reused materials that reflect what one can find at the preserves, as well as smooth transitions and natural colors to draw people into the preserve experience. This scheme also attempts to stay truer to scale to provide as realistic an experience as possible to foster curiosity and interest in heading out to the land to gain a full sensory preserve experience.

Staff and Consultant Coordination

The Administrative Office project architect, Noll & Tam, created the overall design for the building reconfiguration, including spaces for interpretive elements for which EDX is creating the specific interpretive content. Many of the Phase I interpretive elements are being fabricated and installed as part of the current building construction process. The remaining Phase 2 interpretive elements will be fabricated and installed separately through a Request for Proposals process once EDX has completed their design.

DISCUSSION

The focus of this item is to receive Board approval and input on designs for the following interpretive elements detailed in Attachment 1.

Outdoor Interpretive Elements

Three Interpretive Signs

Noll & Tam has identified three locations along the walkway between the sidewalk at El Camino Real and the building's front door for interpretive signs. Noll & Tam selected the sign material and design, and EDX is creating the sign content around the following three Board-approved interpretive themes:

- **Midpen agency:** Introducing the whole story and “why” of the District.
- **Importance of open space:** Conveying how we care for the land and the land cares for us.
- **Open space is for everyone:** Inviting personal connections to open space.

Four Banners

Noll & Tam has identified four locations on the front of the building facing El Camino Real for large banners. Noll & Tam selected the banner material and design, and EDX is creating the banner images with the intention of conveying the District's mission in a way that can be seen from the sidewalk and street. The banner designs are intended to focus on the four main elements of the District's mission:

- Preserving land
- Protecting agriculture
- Restoring natural resources
- Public enjoyment

Indoor Interpretive Elements

Topographic Relief Model

EDX is designing a topographic relief model to be located near the reception desk area that highlights the District's boundaries, topography, habitats and preserves. Reading rails will provide information about each preserve, including an image, short description and allowed uses. The model will be fabricated and installed as part of Phase 2.

Wall Quotes

Noll & Tam has identified three wall locations within the lobby and board room for quotes. The District's two mission statements will be featured in the board room. EDX is suggesting specific quotes for the two remaining quote locations in the public-facing lobby area. The quotes will be installed as part of the current office construction project.

Interpretive Wall Exhibit

The main lobby has a 24-foot by 9-foot wall space identified for interpretive elements. EDX is designing an illustrative mural that aligns with the chosen scheme of "*Bringing the Preserves to the People*" that highlights the iconic landscapes, habitats, plants and animals found in District preserves using natural and reused materials, smooth transitions, and natural colors to draw people into the preserve experience. Overlaid on the mural are panels containing text and images that align with the approved themes. To foster connection and curiosity, EDX has included touchable objects and discovery moments.

Status of Other Approved Elements

Monitor

A 60-inch monitor will be located in the main lobby for use during public meetings and to display informational and interpretive content. The monitor will be installed in the public atrium space along the front stairwell wall as part of the current office construction project. Staff will curate content for the monitor from existing assets.

Large-Scale Wall Images

The following large-scale photographic images are being fabricated and installed as part of the current construction project:

- Image of Russian Ridge Open Space Preserve with Mindego Hill in the background and poppies in the foreground will be located on the back stairwell wall.
- Image of a redwood forest from a District preserve wrapping the elevator shaft.
- Backlit image of Skyline Ridge Open Space Preserve showing Alpine Pond and the floating dock as seen from the Daniels Nature Center to be mounted in the hallway.

Project Timeline

The exterior interpretive signs, four exterior banners and wall quotes will be fabricated and installed as part of the current Administrative Office construction project. The remaining public interpretive elements (topographic relief model and interpretive wall exhibit) are subject to a separate competitive Request for Proposals (RFP) process that will begin immediately after staff

receive board approval and/or feedback on the draft designs. Time is of the essence to allow fabrication to begin in the fall of 2021 with the goal of completing installation before the office project is completed in March 2022.

FISCAL IMPACT

The Fiscal Year 2021-22 (FY22) adopted budget includes \$16,168,483 for the New Administration Office (AO) Facility project #31202 of which \$200,000 is set aside for the interpretive elements. The interpretive elements, as designed, continue to fall within the budget allocation.

BOARD AND COMMITTEE REVIEW

This project has previously come to the full Board of Directors at the following public meetings:

- **November 18, 2020:** The Board awarded a contract to EDX Exhibits to complete phase 1 planning and design. ([R-20-133, meeting minutes](#))
- **January 27, 2021:** The Board reviewed, discussed and approved the project brief, which documents the interpretive foundations that will inform and guide the project. ([R-21-18, meeting minutes](#))
- **March 10, 2021:** The Board reviewed, discussed and approved the Scheme 1 design approach, which provides an overall design approach and general tone, mood and color palette for the project. ([R-21-37, meeting minutes](#))
- **June 2, 2021:** The Board confirmed their preference for use of the aluminum material chosen by the project architect for the four banners on the outside of the building, rather than a cut steel option shown at the March 10, 2021 board meeting. ([R-21-70, meeting minutes](#) not yet approved)

PUBLIC NOTICE

Public notice was provided as required by the Brown Act.

CEQA COMPLIANCE

Approval of office interpretive elements is not a project subject to the California Environmental Quality Act. Furthermore, the AO Project is categorically exempt from CEQA under Section 15301, Existing Facilities. District staff filed Notices of Exemption with Santa Clara County on September 24, 2020.

NEXT STEPS

If approved, final designs for the time-sensitive interpretive elements being fabricated and installed as part of the current office construction will be given to the architect to begin the process.

Any additional feedback from the board on the remaining interpretive elements will be incorporated into the design and if necessary, brought back to the board on August 25, 2021 for final approval.

Attachment:

1. Draft Designs

Responsible Department Head:

Korrine Skinner, Public Affairs Manager

Staff contact:

Leigh Ann Gessner, Public Affairs Specialist II

Prepared by:

Leigh Ann Gessner, Public Affairs Specialist II

Renée Fitzsimons, Interpretation & Education Program Manager

Midpeninsula Regional Open Space District AO Interpretive Elements Project



Design Development II

July 14, 2021



200 East Boston St., Seattle, WA 98102 | 206 528-5556 | www.edxseattle.com



Table of Contents

Project Overview 3

Site Plan 4

Scene 01: Plaza Interpretive Signs 5

Scene 02: Exterior Banners 9

Scene 03: Lobby 3D Relief Model 12

Scene 05: Atrium Exhibit Wall 18

Scene 06: Atrium Monitor Wall 34

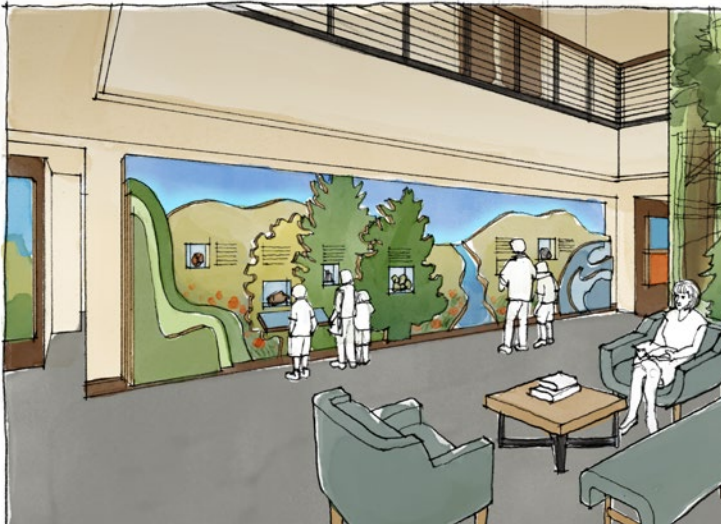
Scene 07: Quotes 36

Atrium Room Views 40

Project Overview

BOARD DIRECTION IN MARCH 2021

Schematic Design, Scheme 1 selected



Scheme 1—Bringing the preserves to the people

- Brings a sense of the natural preserve experience inside.
- Uses wood and other natural materials with modern finishes, subtle colors and textures.
- Creates comfortable, evocative spaces.
- Incites curiosity and interest through large-scale, holistic, and integrated exhibits.

INTERPRETIVE THEMES

Midpen agency—The Midpeninsula Regional Open Space District is an innovative public entity that preserves open space for its many benefits.

Importance of open space—Preservation of open space and agricultural lands provides multiple benefits, including restoration of vital ecosystems, conservation of the region’s dramatic scenery and rich agricultural heritage, and provides opportunities for enriching and ecologically sensitive recreation.

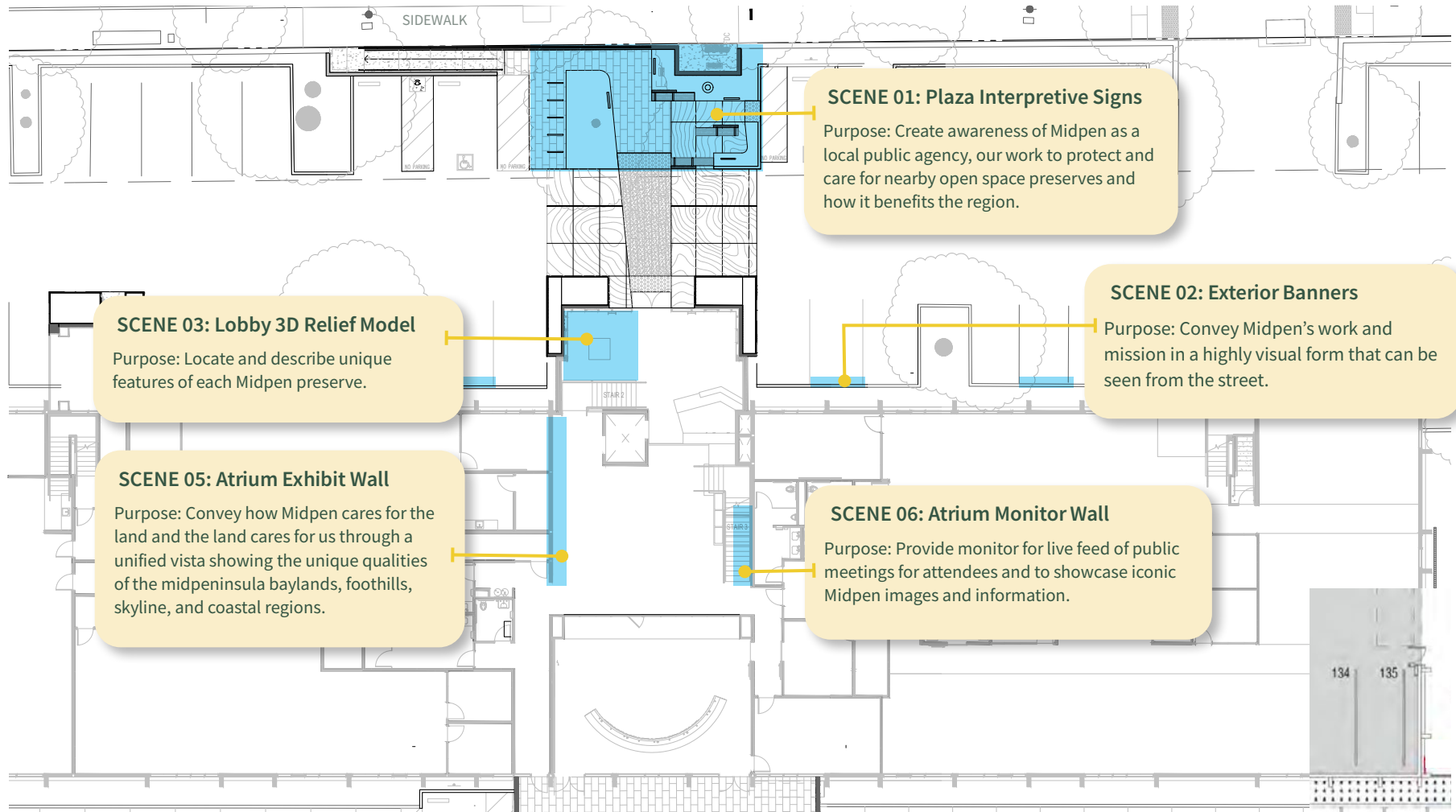
Open space is for everyone—While preserving the natural world, open space also provides profound benefits and enrichment for all people.

Big Interpretive Idea for the exhibits:

Open space belongs to everyone: it preserves our natural world, sustains healthy living, and offers enriched experiences for people to connect with nature.

Site Plan

El Camino Real



Various locations

NOT TO SCALE



Scene 07: Quotes

Purpose: Provide quotes that align with Midpen's values in publicly accessed spaces.

Scene 01: Plaza Interpretive Signs

SCENE 01: Plaza Interpretive Signs Purpose

Create awareness of Midpen as a local public agency, our work to protect and care for nearby open space preserves and how it benefits the region.

Interpretive Themes:

- Open space is for everyone
- Importance of open spaces
- Midpen agency

Audience:

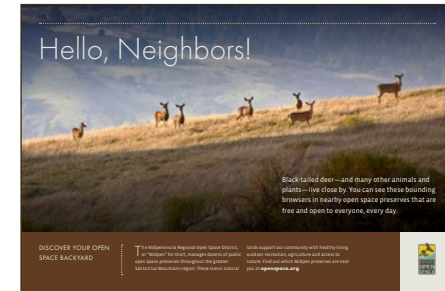
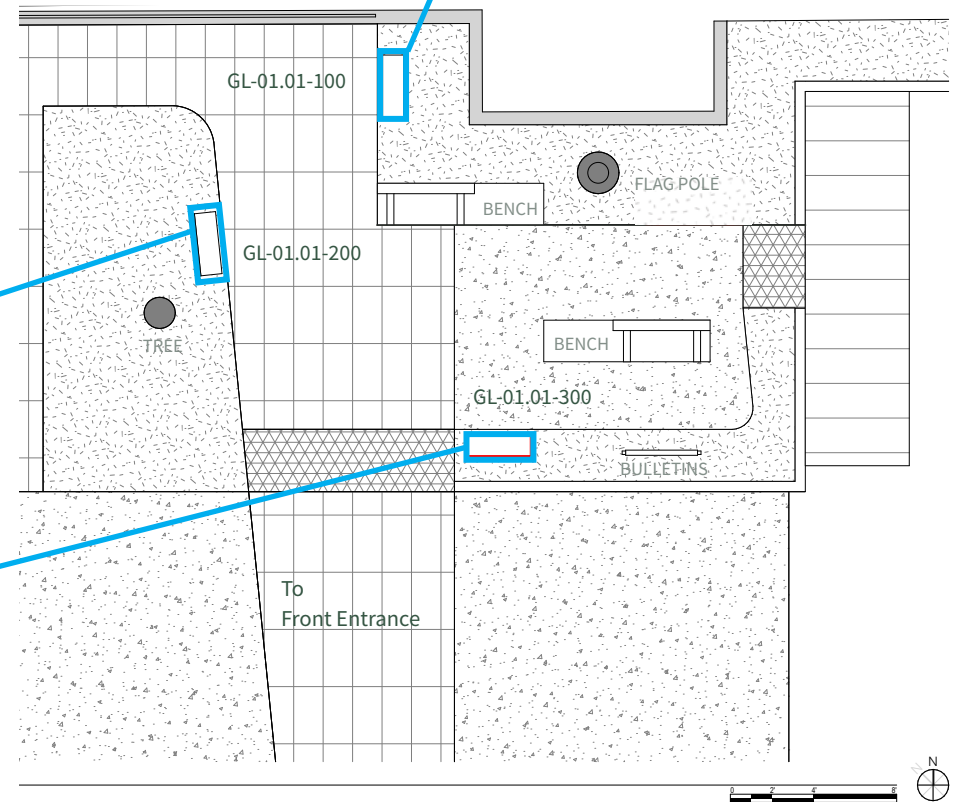
- Pedestrians who enter plaza from sidewalk along El Camino Real or from parking lot.
- People with and without prior knowledge of Midpen and Midpen preserves.



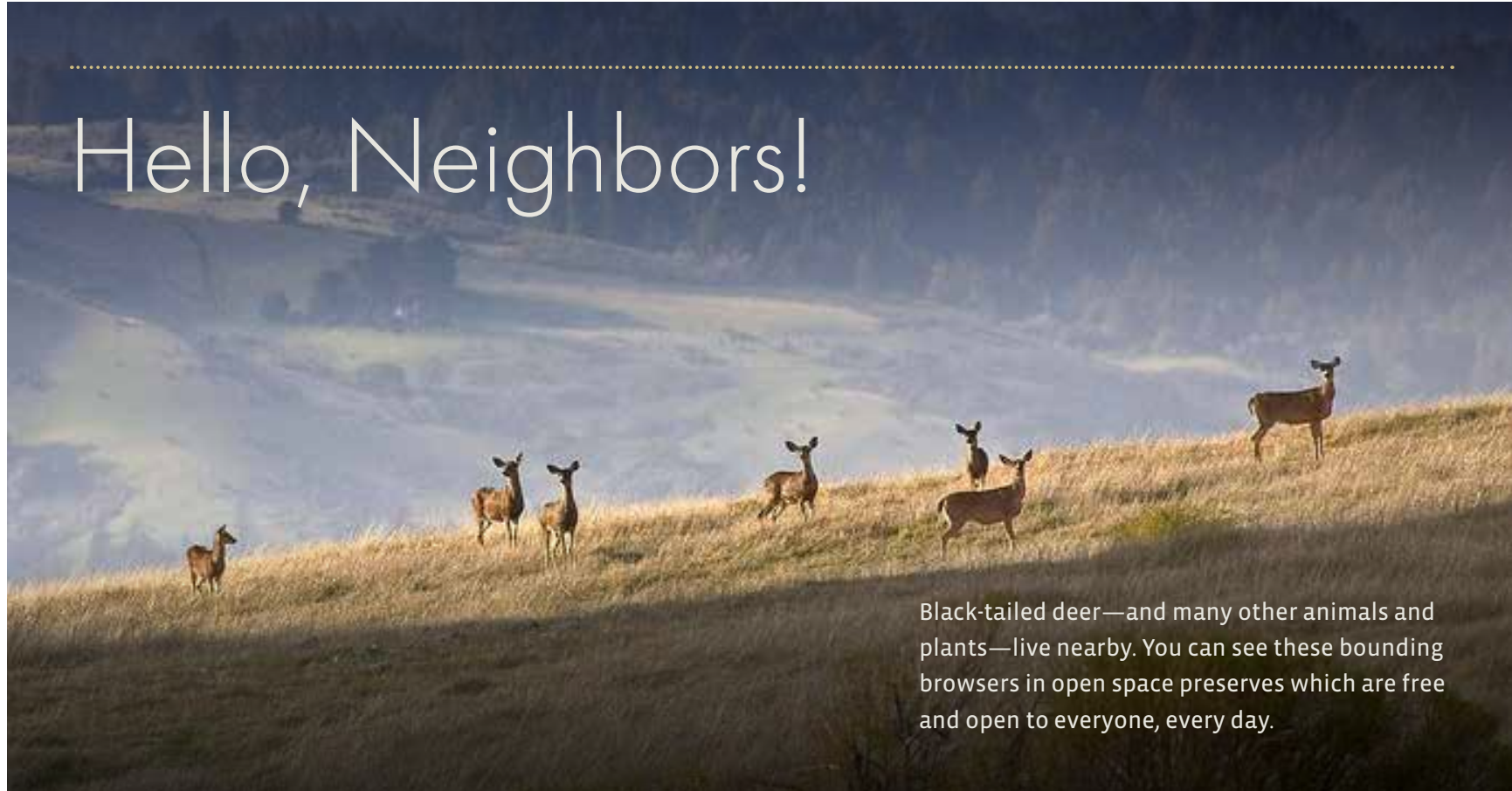
(SIGN FACES PLAZA)

El Camino Real

SIDEWALK



Scene 01: GL-01.01-100




Hello, Neighbors!

Black-tailed deer—and many other animals and plants—live nearby. You can see these bounding browsers in open space preserves which are free and open to everyone, every day.

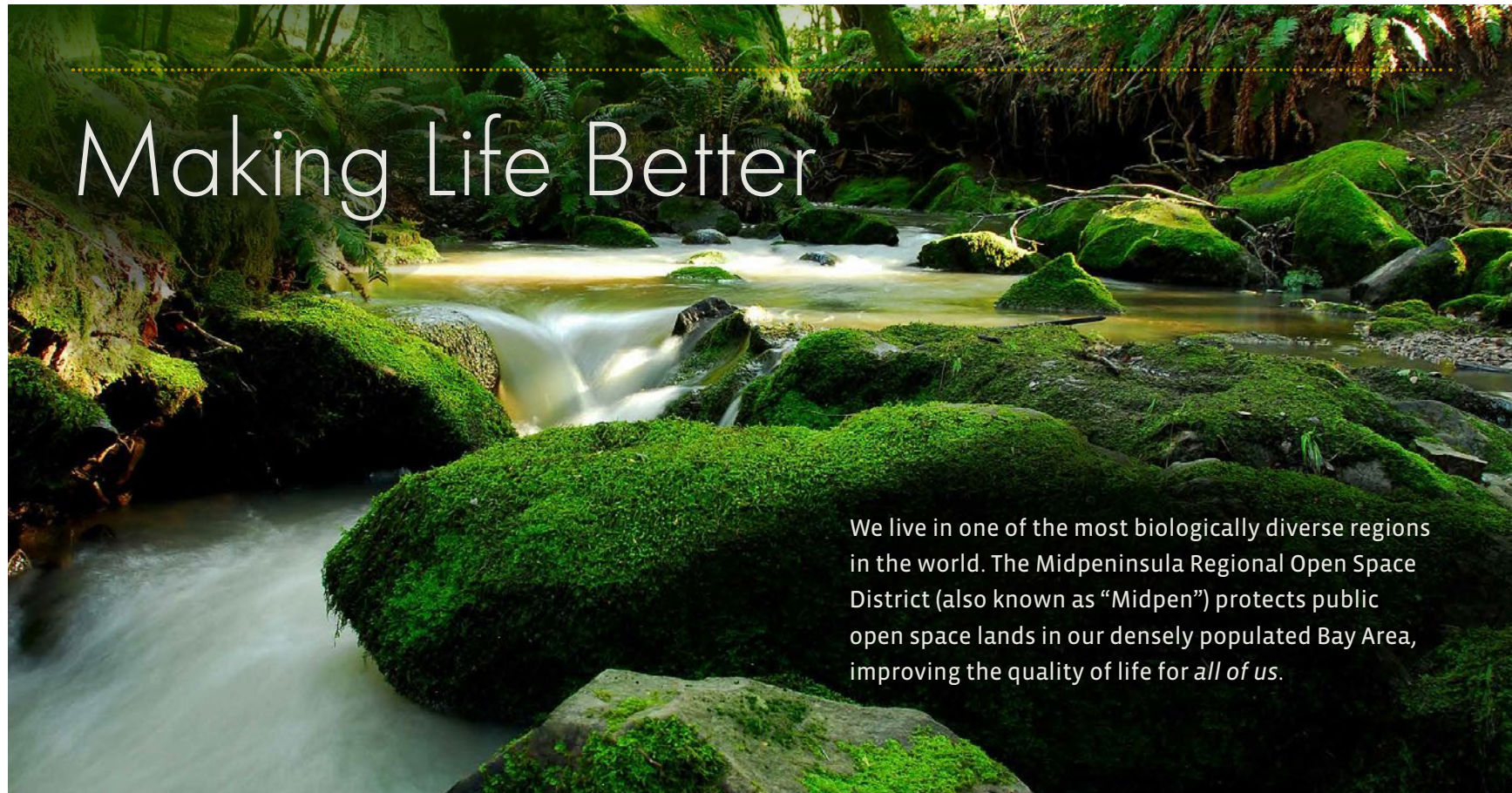
DISCOVER YOUR OPEN SPACE BACKYARD

The Midpeninsula Regional Open Space District, or “Midpen” for short, manages dozens of public open space preserves throughout the greater Santa Cruz Mountains region. These scenic natural lands support our community with healthy living, outdoor recreation, agriculture and access to nature. Find out which Midpen preserves are near you at openspace.org.



GL-01.01-100
Size: 36”w x 24”h
Scale: 25%

Scene 01: GL-01.01-200



Making Life Better

We live in one of the most biologically diverse regions in the world. The Midpeninsula Regional Open Space District (also known as “Midpen”) protects public open space lands in our densely populated Bay Area, improving the quality of life for *all of us*.

OPEN SPACES ARE HOME TO
AN ABUNDANCE OF PLANTS
AND ANIMALS

Midpen lands also support and protect people in the surrounding urban areas by providing natural beauty, clean air and water, flood protection, climate change resilience and

local food. Those who venture out on Midpen’s hundreds of miles of nearby trails also receive physical and emotional health and well-being from time spent in nature.



GL-01.01-200
Size: 36”w x 24”h
Scale: 25%

Scene 01: GL-01.01-300

From Grassroots to Greenbelt

Local voters created the Midpeninsula Regional Open Space District (Midpen) in 1972 after residents organized a determined, heartfelt effort to place an initiative on the ballot and succeeded in saving “room to breathe” for generations to come.

Today, Midpen is a taxpayer-supported public agency serving our community by protecting and caring for a regional greenbelt made up of dozens of open space preserves. Come inside to learn more, or visit **openspace.org**.



Community is key to our success. Each year, hundreds of volunteers in Midpen preserves help educate and inspire visitors, restore nature, lead field trips, staff our nature center at Skyline Ridge Preserve and more.

- | | | |
|----------------------------|----------------------------|--|
| 1 Bear Creek Redwoods | 10 Miramonte Ridge | 19 Sierra Azul |
| 2 Coal Creek | 11 Monte Bello | 20 Skyline Ridge |
| 3 El Corte de Madera Creek | 12 Picchetti Ranch | 21 St. Joseph's Hill |
| 4 El Sereno | 13 Pulgas Ridge | 22 Stevens Creek Shoreline Nature Study Area |
| 5 Foothills | 14 Purisima Creek Redwoods | 23 Teague Hill |
| 6 Fremont Older | 15 Rancho San Antonio | 24 Thornewood |
| 7 La Honda Creek | 16 Ravenswood | 25 Tunitas Creek |
| 8 Long Ridge | 17 Russian Ridge | 26 Windy Hill |
| 9 Los Trancos | 18 Saratoga Gap | |



GL-01.01-300
Size: 36" w x 24" h
Scale: 25%

Scene 02: Exterior Banners

SCENE 02: Exterior Banners Purpose

Convey Midpen's work and mission in a highly visual form that can be seen from the street.

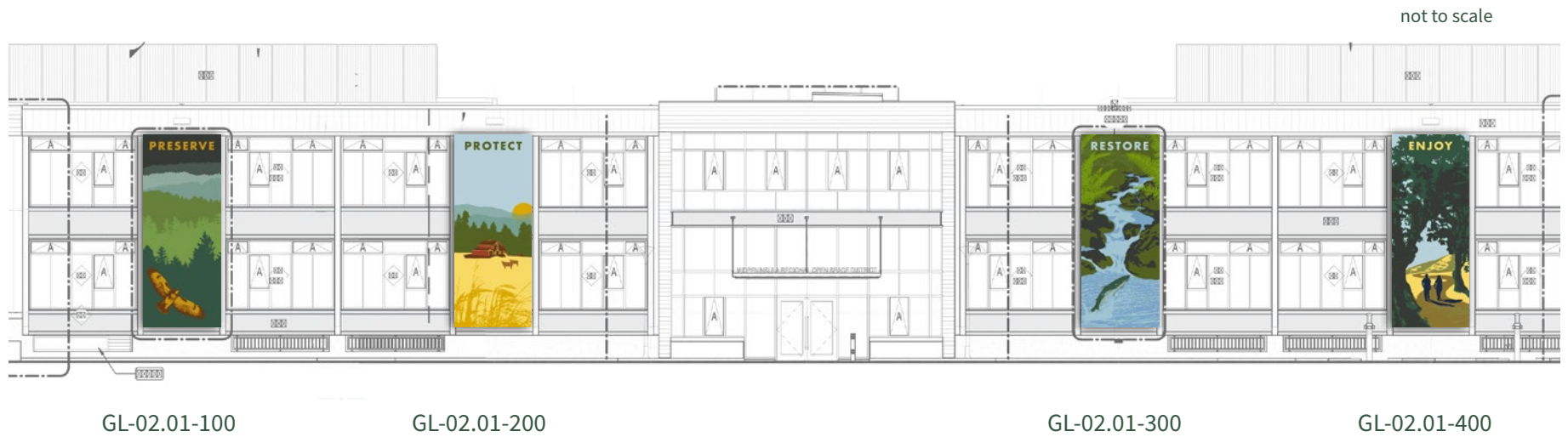
Interpretive Themes:

- Open space is for everyone
- Importance of open spaces
- Midpen agency

Audience:

- People in vehicles on El Camino Real and parking lot; pedestrians on sidewalk, in plaza and parking lot.
- People with and without prior knowledge of Midpen and Midpen preserves.

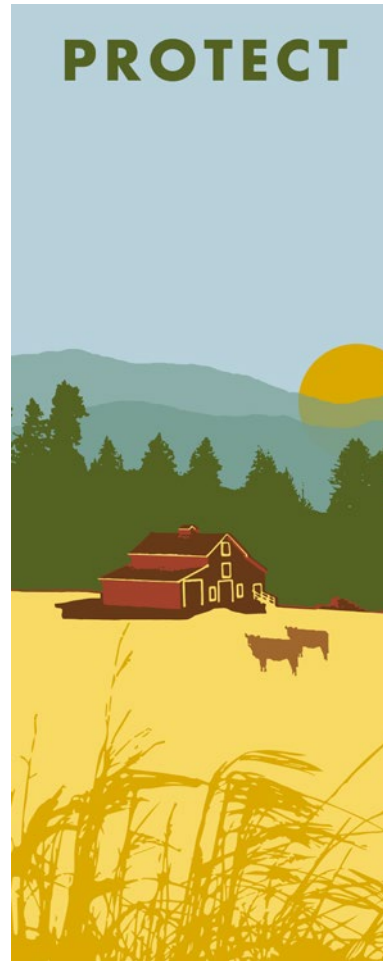
NOTE: banner designs are based on photos from Midpen preserves and use Midpen's brand color palette.



Scene 02: Exterior Banners



Component: GL-02.01-100
Size: 96"w x 240"h



Component: GL-02.01-200
Size: 96"w x 240"h

Scene 02: Exterior Banners



Component: GL-02.01-300
Size: 96"w x 240"h



Component: GL-02.01-400
Size: 96"w x 240"h

Scene 03 Lobby 3D Relief Model

SCENE 03: Lobby 3D Relief Model Purpose

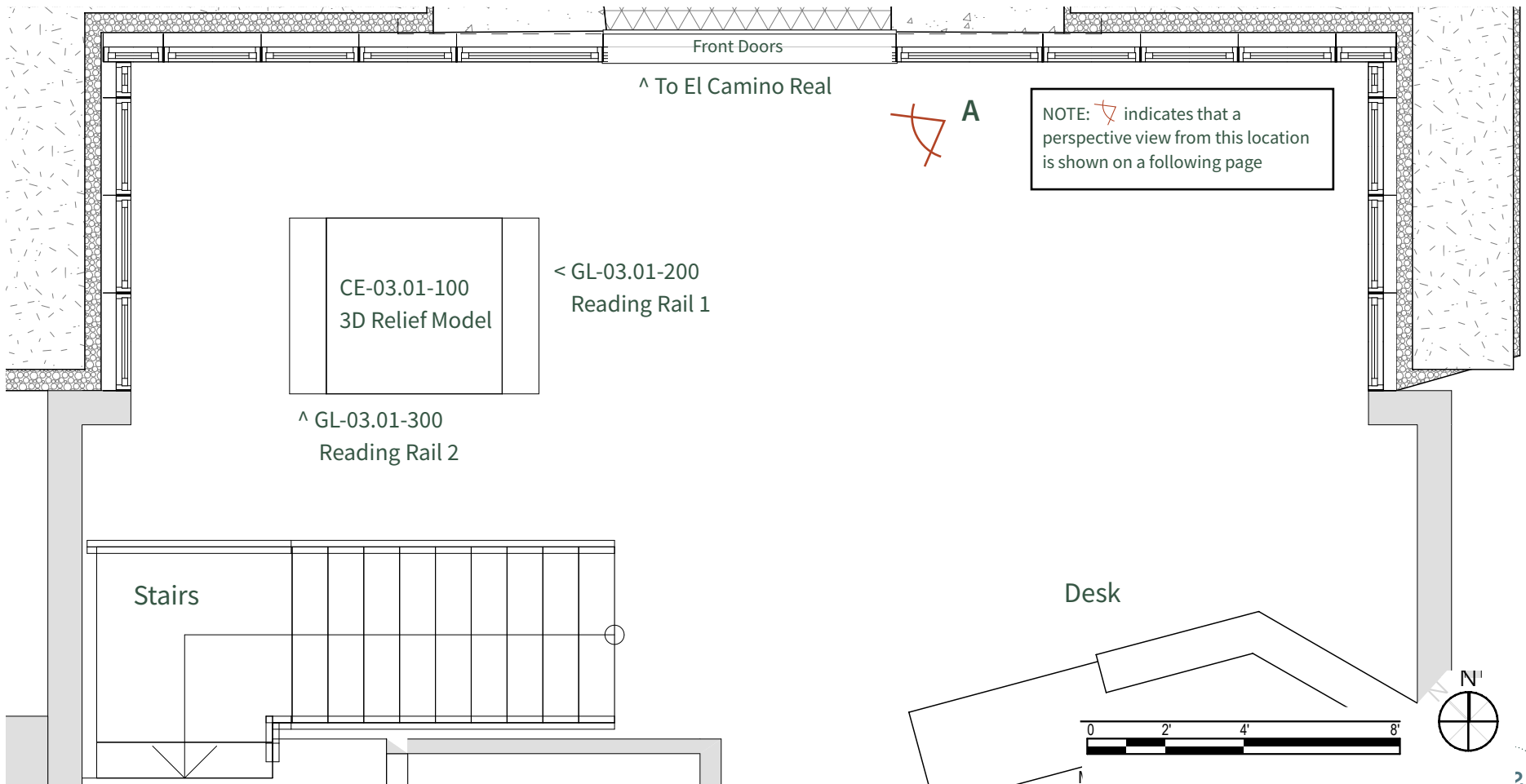
Locate and describe unique features of each Midpen preserve.

Interpretive Themes:

- Open space is for everyone
- Midpen agency

Audience:

- People who come to Midpen offices for information and to attend meetings.
- Midpen employees, volunteers, and partner organizations.
- People with and without prior knowledge of Midpen's work and Midpen's open space preserves.



Scene 03 Lobby 3D Relief Model



Perspective view A: 3D relief model of region showing Midpen preserves. Relief model will show vertically exaggerated topography to accentuate the geography. Note that north on the model aligns roughly with geographic north.

Scene 03 Lobby 3D Relief Model

Fused Aluminum panel

Painted fiberglass 3D relief model

Fused Aluminum panel



GL-03.01-200

Size: 54" w x 12" h

Scale: 1"=1'0" or 8.3% of actual size

CE-03.01-100

Size: 54" w x 54" h

Scale: 1"=1'0" or 8.3% of actual size

GL-03.01-300

Size: 54" w x 12" h

Scale: 1"=1'0" or 8.3% of actual size

Scene 03: Lobby 3D Relief Model Reference Images



Reference image for 3D relief model.

Suggested technique is a Fiberglas map with gelcoat top coat, UVC inhibiting paints. Text and labels are applied last, and the entire model is coated with a UV-blocker clear coat to protect from sunlight.

Reference image for 3D relief model and reading rail



Scene 03 Lobby 3D Relief Model Features

CE-03.01-100

3D RELIEF MODEL

Midpen Preserves to be identified on model:

Bear Creek Redwoods
 Coal Creek
 El Corte de Madera Creek
 El Sereno
 Foothills
 Fremont Older
 La Honda Creek
 Long Ridge
 Los Trancos
 Monte Bello Preserve
 Picchetti Ranch
 Pulgas Ridge
 Purisima Creek Redwoods
 Rancho San Antonio
 Ravenswood
 Russian Ridge
 Saratoga Gap
 Sierra Azul
 Skyline Ridge
 St. Joseph's Hill
 Stevens Creek Shoreline
 Teague Hill
 Thornewood
 Windy Hill
 Miramontes Ridge
 Tunitas Creek

Notes for next design phase for relief model:

1. Midpen GIS department to confirm miles of trail for each preserve. These figures came from Midpen website.
2. Relief model will most likely use numbers to call out preserve locations.
3. Midpen staff to identify which of the following should be included on the model and which ones require labels:
 - major roads
 - towns
 - waterways
 - preserve boundaries
4. Relief model to show shading to denote habitats in consultation with Midpen GIS department.

Scene 03 Lobby 3D Relief Model Graphics

NOTE: graphic text and images are draft and do not need board review at this time. This content will be brought back to the board for approval in August.

EXPLORE YOUR OPEN SPACES

Midpeninsula Regional Open Space District cares for many public open space preserves. There are 24 preserves that are free and open every day. For more information, please visit openspace.org

Our Mission

To acquire and preserve a regional greenbelt of open space land in perpetuity, protect and restore the natural environment, and provide opportunities for ecologically sensitive public enjoyment and education.

On the San Mateo County Coast, our mission also includes preserving agricultural land of regional significance and rural character, and encouraging viable agricultural use of land resources.

1 Bear Creek Redwoods Preserve
6 MILES OF TRAILS
Hiking, Equestrian, Wheelchair accessible, Restrooms, Good for Kids
Shaded redwood and fir forests, cool creeks, and stunning views of the Sierra Azul Range.

2 Coal Creek Preserve
5.4 MILES OF TRAILS
Hiking, Biking, Equestrian, Dogs on Leash
Mixed evergreen forests and open grassland ridges with views of San Francisco Bay.

3 El Corte de Madera Creek Preserve
35.9 MILES OF TRAILS
Hiking, Biking, Equestrian, Restrooms
Mixed evergreen and redwood forests, ocean views, and rare sandstone rock outcrops.

4 El Sereno Preserve
6.9 MILES OF TRAILS
Hiking, Biking, Equestrian, Dogs on Leash
Chaparral habitat with some wooded areas near creeks and small meadows.

5 Foothills Preserve
13.2 MILES OF TRAILS
Hiking, Equestrian, Dogs on Leash
Grassy ridgetop with steep chaparral-covered slopes. Oak-madrone woodlands in the ravines.

6 Fremont Older Preserve
14.7 MILES OF TRAILS
Hiking, Biking, Equestrian, Dogs on Leash, Restrooms
Open hayfields and high hilltops, sweeping views of the Santa Clara Valley. Adjacent ridges with chaparral and oaks.

7 La Honda Creek Preserve
10.7 MILES OF TRAILS
Hiking, Equestrian, Dogs on Leash, Restrooms
Forests of redwoods, open rolling grasslands with grazing cattle, spectacular views of the coast and nearby ridgelines.

8 Long Ridge Preserve
13.2 MILES OF TRAILS
Hiking, Biking, Equestrian, Dogs on Leash, Restrooms
Mixed evergreen forests, hidden streams, and rolling hills with oaks and vistas. Includes one of the longest continuous segments of the Bay Area Ridge Trail.

9 Los Trancos Preserve
5.2 MILES OF TRAILS
Hiking, Equestrian, Restrooms
Rolling grassland knolls with oaks and cool shaded mixed evergreen forests.

10 Monte Bello Preserve
15.5 MILES OF TRAILS
Hiking, Biking, Equestrian, Restrooms, Backpack Camping, Good for Kids
Rolling grasslands, dense mixed evergreen forests along creeks, and grand vistas. Rich in wildlife and ecosystem diversity.

11 Picchetti Ranch Preserve
3.7 MILES OF TRAILS
Hiking, Equestrian, Wheelchair accessible, Restrooms, Good for Kids
Forested canyon of madrone, coast live oak, California bay trees. Views of Mount Umunhum and the Sierra Azul Range.

12 Pulgas Ridge Preserve
6.0 MILES OF TRAILS
Hiking, Dogs on Leash, Wheelchair accessible, Restrooms
Cool forested canyons, grasslands and ridgetop views toward the Bay and surrounding hillsides.

GL-03.01-200
Size: 54" w x 12" h
Scale: 19.75%

EXPLORE YOUR OPEN SPACES

Midpeninsula Regional Open Space District cares for many public open space preserves. There are 24 preserves that are free and open every day. For more information, please visit openspace.org

Our Mission

To acquire and preserve a regional greenbelt of open space land in perpetuity, protect and restore the natural environment, and provide opportunities for ecologically sensitive public enjoyment and education.

On the San Mateo County Coast, our mission also includes preserving agricultural land of regional significance and rural character, and encouraging viable agricultural use of land resources.

13 Purisima Creek Redwoods Preserve
24.0 MILES OF TRAILS
Hiking, Biking, Equestrian, Wheelchair accessible, Restrooms
Redwood forests lush with ferns, berries, and wildflowers. Upper slopes with chaparral and grassland areas.

14 Rancho San Antonio Preserve
24.2 MILES OF TRAILS
Hiking, Biking, Equestrian, Wheelchair accessible, Restrooms, Good for Kids
Extensive trails through diverse environments including shaded areas and open hillsides.

15 Ravenswood Preserve
1.9 MILES OF TRAILS
Hiking, Biking, Wheelchair accessible, Good for Kids
Bay-side trails and a boardwalk along salt marshes and wetlands. Includes section of the San Francisco Bay Trail.

16 Russian Ridge Preserve
10.4 MILES OF TRAILS
Hiking, Biking, Equestrian, Wheelchair accessible, Restrooms, Good for Kids
Rolling grasslands with seasonal wildflowers and ridges with sweeping views. Nearby steep forested canyons support majestic oaks and variety of animals.

17 Saratoga Gap Preserve
1.2 MILES OF TRAILS
Hiking, Biking, Equestrian
Areas of grasslands and mixed evergreen forests, interspersed with views of the Santa Clara Valley.

18 Sierra Azul Preserve
24.4 MILES OF TRAILS
Hiking, Biking, Equestrian, Dogs on Leash, Wheelchair accessible, Restrooms
Abundant wilderness and species diversity in Midpen's largest preserve. Includes Mount Umunhum, culturally significant for the Amah Mutsen Tribal Band and other Native Americans.

19 Skyline Ridge Preserve
10.9 MILES OF TRAILS
Hiking, Biking, Equestrian, Wheelchair accessible, Restrooms, Good for Kids
Expansive views along the ridge, with meadows, mixed evergreen forests, a pond, and quiet lake.

20 St. Joseph's Hill Preserve
4.2 MILES OF TRAILS
Hiking, Biking, Equestrian, Dogs on Leash, Restrooms
Grassland, chaparral, and oak woodland environments. Ready access to nature from nearby cities.

21 Stevens Creek Shoreline Nature Area
0.5 MILES OF TRAILS
Hiking, Biking, Wheelchair accessible, Good for Kids
Bayfront preserve with access to marshlands and connection to other adjacent public trails. Easy viewing of shorebirds and ducks.

22 Teague Hill Preserve
1.0 MILES OF TRAILS
Hiking, Equestrian
Small preserve has short section of Bay Area Ridge Trail with mixed evergreen forests. Douglas fir, oaks, bay laurel, and madrone trees.

23 Thornewood Preserve
1.5 MILES OF TRAILS
Hiking, Equestrian, Dogs on Leash
Mixed evergreen forests, pond, and open meadows. Easily accessible from nearby cities.

24 Windy Hill Preserve
12.2 MILES OF TRAILS
Hiking, Biking, Equestrian, Dogs on Leash, Wheelchair accessible, Restrooms
Open grassland ridges, a pond, and forests of redwood, fir, bay laurel, madrone and oak. Sweeping views to coast and bay from upper areas of preserve.

GL-03.01-300
Size: 54" w x 12" h
Scale: 19.75%

Scene 05: Atrium Exhibit Wall

SCENE 05: Exhibit Wall Purpose

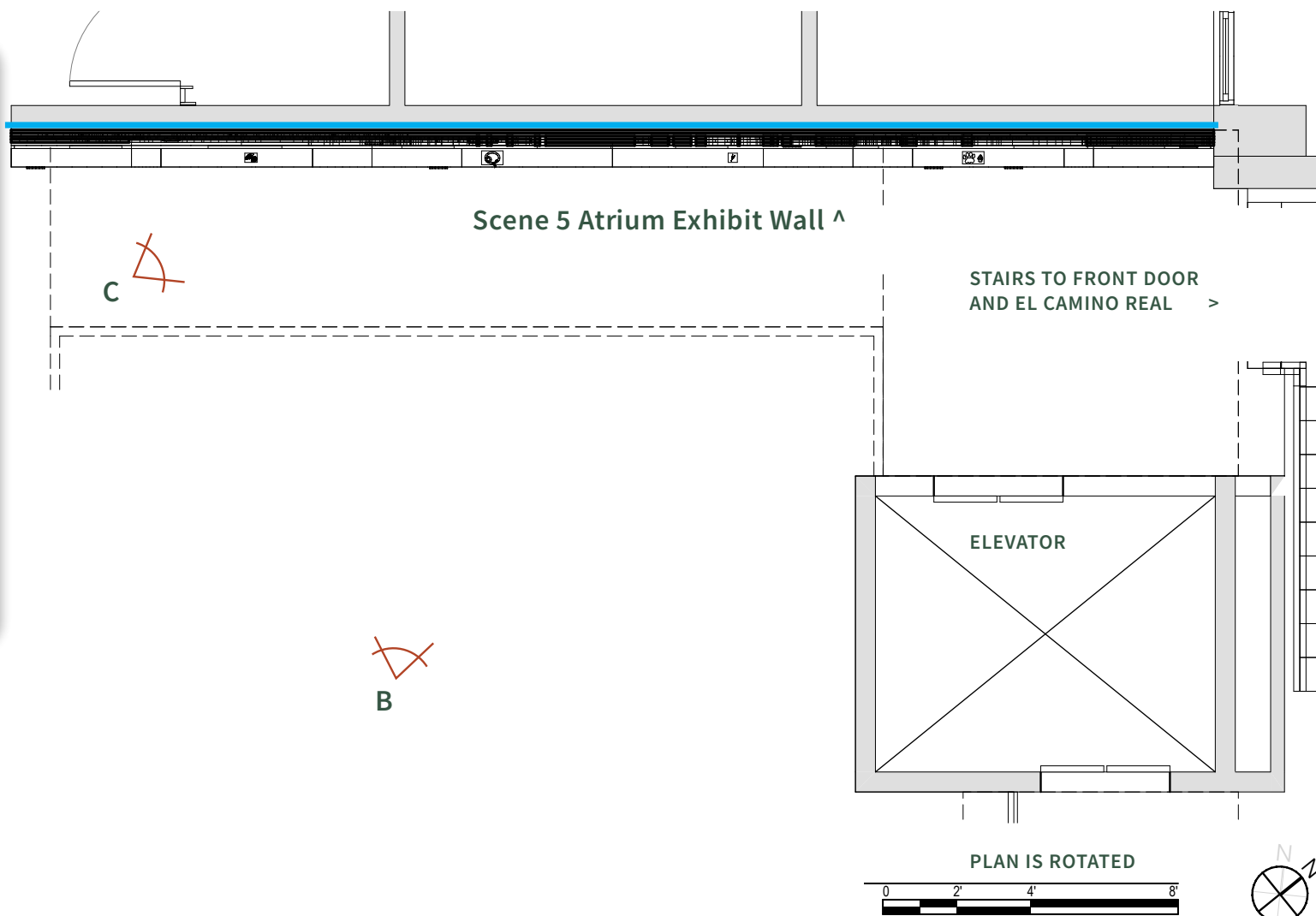
Convey how Midpen cares for the land and the land cares for us through a unified vista showing the unique qualities of the midpeninsula baylands, foothills, skyline, and coastal regions.

Interpretive Themes:

- Open space is for everyone
- Importance of open spaces
- Midpen agency

Audience:

- People who come to Midpen offices for information and to attend meetings.
- Midpen employees, volunteers, and partner organizations.
- People with and without prior knowledge of Midpen's work and Midpen's open space preserves.



Scene 05: Atrium Exhibit Wall



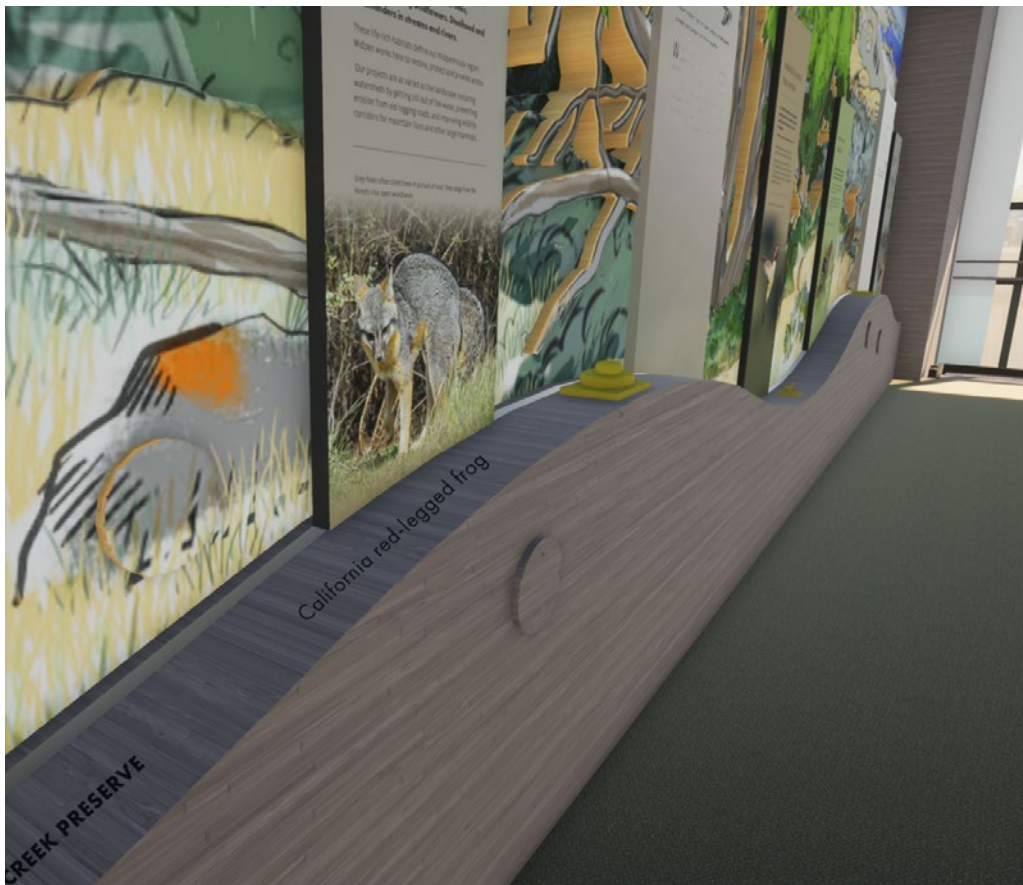
Perspective view B: Exhibit wall showing layering of mural on appleplywood with graphic panels in front. Band in front is made of reclaimed redwood. Inset into mural are discovery panels with small graphics. Inset into the redwood band are discovery tactile elements.

Scene 05: Atrium Exhibit Wall



Perspective view C: Detail of exhibit wall showing layering of illustrated mural on appleplywood with graphic panels in front. A subtle band of lighting shines up onto the mural from the top edge of the redwood band below. On top of redwood band will be a ribbon of graphics identifying species and preserves. Tactile elements are perched on top of the redwood band.

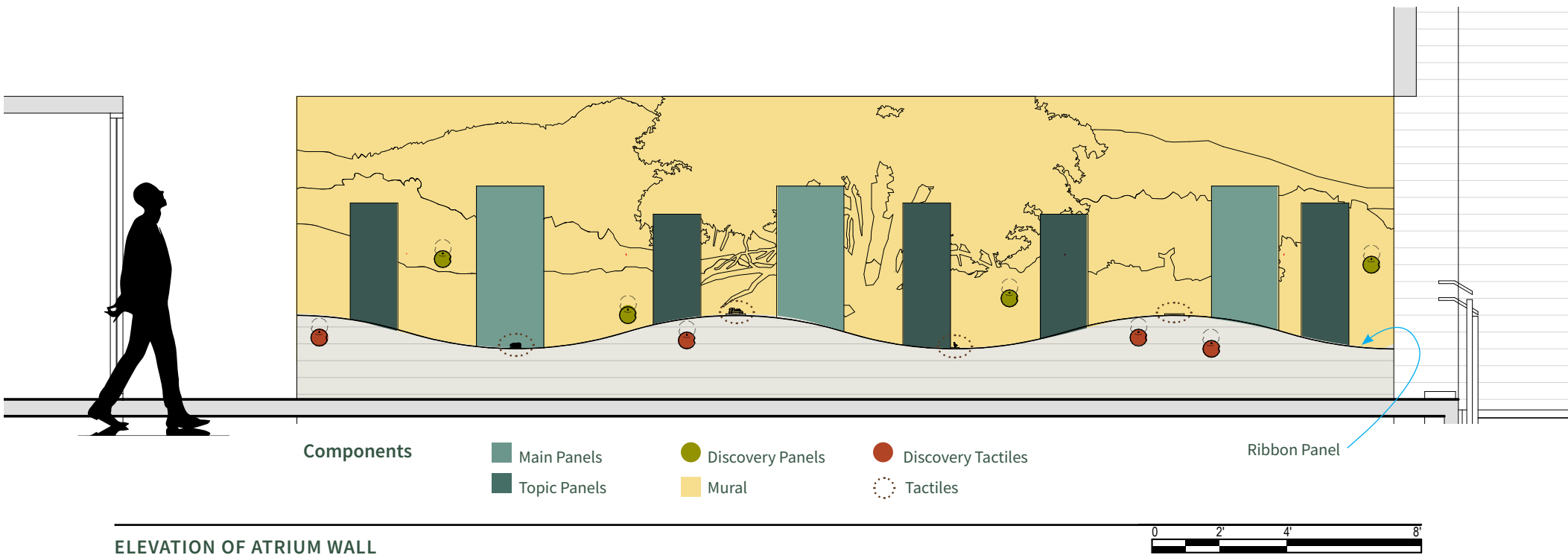
Scene 05: Atrium Exhibit Wall



Details: Exhibit wall showing layering of mural on appleplywood with graphic panels in front. Band in front is made of reclaimed redwood. Inset into mural are discovery panels with small graphics. Inset into the redwood band are discovery tactile elements.

Scene 05: Atrium Exhibit Wall, Key to Element Types

In this elevation the colors are a key to show each type and quantity of different elements represented on the wall. They do not represent actual colors in the exhibit.



ELEVATION OF ATRIUM WALL

Scene 05: Atrium Exhibit Wall Mural Sketch

Layers of the Appleply mural, with direct-printed full-color imagery

GL-05.06-100 First Layer: closest to visitor, includes oak tree and foreground

GL-05.06-120 Second Layer: encompasses middle ground

GL-05.06-130 Third Layer: includes background and features on horizon

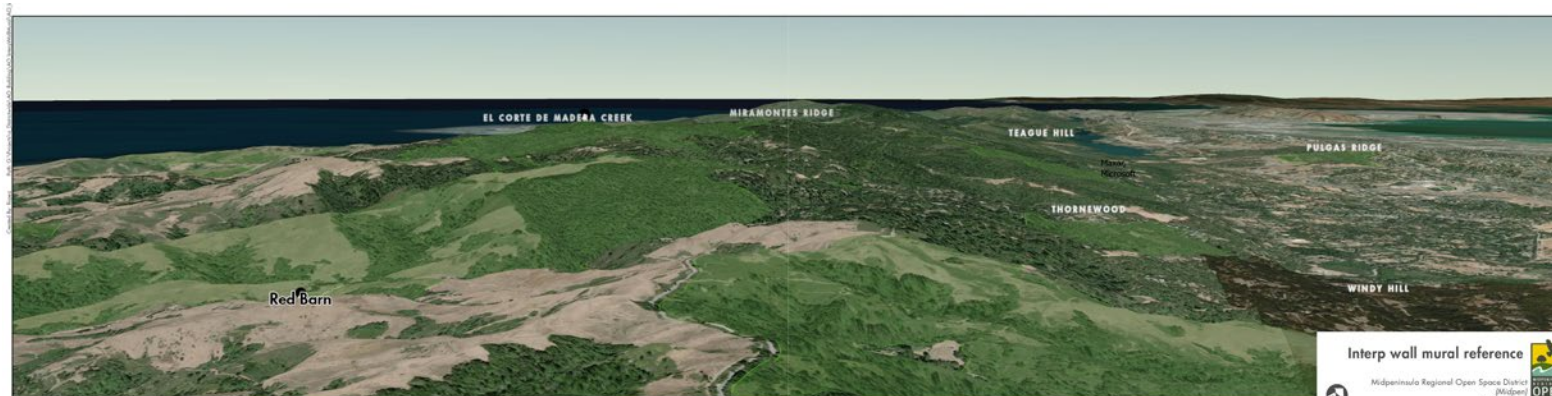
GL-05.06-140 Fourth Layer: farthest from visitor, includes elements in far distance

NOTE: the mural illustration is a sketch showing geographically accurate view looking north up the Peninsula and showcasing the main habitats Midpen protects and cares for. Left to right: Coastal, Skyline, Foothills and Baylands regions.

In subsequent design phases, the illustration will include plants and animals specific to each habitat.



Google Earth imagery created by Midpen GIS department showing geographic view for mural



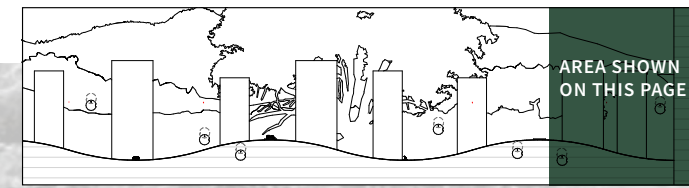
Scene 05: Atrium Exhibit Wall Examples from Mural Artist

Artist name: Joyce Mihran Turley

Joyce sketched the image for this deliverable. These are examples of her finished work.



Scene 05: Atrium Exhibit Wall



AREA SHOWN
ON THIS PAGE

Room to Breathe— By the People, For the People

Saving open space in our region has always been about determination, creativity and commitment.

Late 1960s: what had once been abundant open space in the foothills and baylands was disappearing as cities in the Bay Area grew.

Early 1970s: People agonized, organized, and proposed a solution—a publicly funded entity to protect the lands that defined this region. By 1975, citizens in Santa Clara and San Mateo counties voted in favor of establishing Midpen.

Today: The work is not over. Thousands of people—volunteers, visitors, staff, voters—continue to protect the essential habitats of our region and support Midpen's mission.

Midpen is short for our entire agency name—Midpeninsula Regional Open Space District.

PRESERVING OUR BAYLANDS

Salt water surrounding grasses. Raucous shorebird calls. Cooling breezes. Teeming with life, these are our region's baylands. Their secret superpower is carbon-storage.

Midpen works to preserve baylands by protecting this watery land from building and paving. The entire San Francisco Bay used to be surrounded by shallow salt marshes. Today only about 15 percent remains.

Why do these places matter? They have power: to help restore our climate, to provide homes to unique plants and animals, and to give us places to stroll and rejuvenate.



NOTE: graphic text and images are draft and do not need board review at this time. This content will be brought back to the board in August.

GL-05-03-050

Salt marsh harvest
mouse reveal

6" circle

CE-05.05-100

Tactile
Mountain lion,
coyote tracks

CE-05-03-400

Discovery in Redwood face
Burrowing owl

GL-05-04-100 & 200

Ribbon Panels

6"h x 49.625"l

GL-05.01-100

Main Panel: Midpen's history

24"w x 76"h

GL-05.02-100

Topic panel: Preserving Our Baylands

17"w x 70"

Midpen Exhibits DDII | EDX Exhibits | 07/14/21

Scene 05: Atrium Exhibit Wall



INDIGENOUS LANDS & TRIBAL PARTNERS

True wealth is the ability to carry indigenous knowledge forward to provide for all people, animals, plants, Mother Earth, wind, water and shadows.

— Valentin Lopez, Chair of the Amah Mutsun Tribal Band, 2021

The Amah Mutsun band and other Native American communities are the original residents of this region.

Midpen and the Amah Mutsun work together at the Sierra Azul Open Space Preserve at Mount Umunhum. The mountain is sacred to many tribal groups. Joint programs include ethnobotany research, prescribed fire management and ceremonial gatherings.

Umunhum means hummingbird in the Mutsun language.



HOW THE LAND RESTORES US

Open spaces give us room to breathe. This one idea explains why Midpen exists. Open space enables healthy bodies, minds and spirits.

This has been the central idea for Midpen from the early sayos grass-roots efforts to save open space to the global pandemic of the early 2020s.

A few examples: By 2020, Midpen will have a trail within five miles of anyone living in our region. Fire resilience, drought tolerance, climate mitigation—these goals are top of mind for us.

Midpen preserves have always been free for everyone.



GL-05-03-250
Discovery Panel Reveal
Mountain lion
6" circle

CE-05-03-500
Discovery in Redwood face
American badger

CE-05.05-200
Tactile
Anna's hummingbird

GL-05-04-300 & 400
Ribbon Panels
6"h x 49.625"l

redwood base

MIRAMONTES RIDGE PRESERVE

Anna's hummingbird

THORNWOOD PRESERVE

American badger

GL-05.02-300

Topic Panel: Indigenous Lands & Tribal Partners

17"w x 66" or 70"

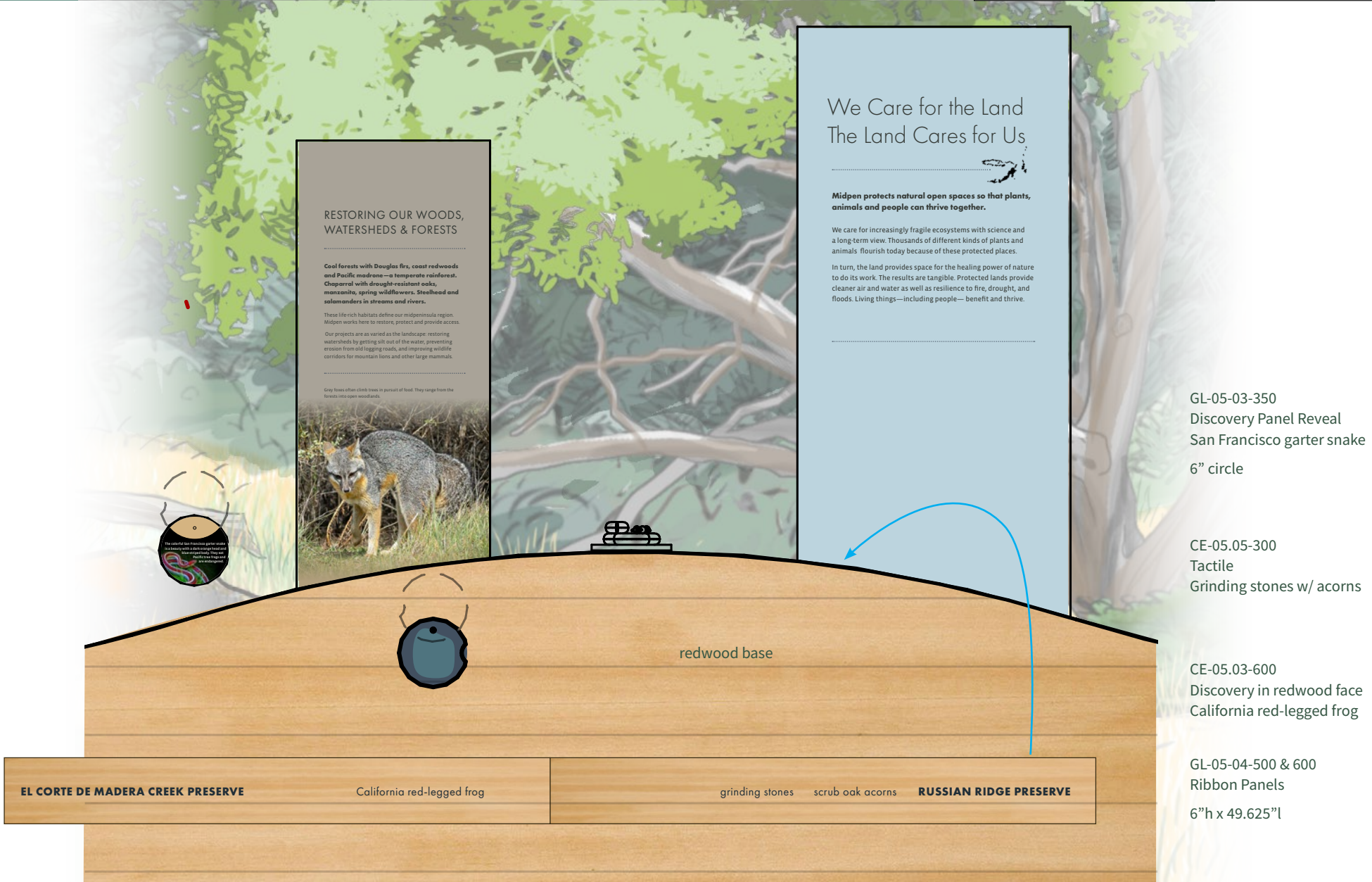
GL-05.02-200

Topic Panel: How the Land Restores Us

17"w x 66" or 70"

Midpen Exhibits DDII | EDX Exhibits | 07/14/21

Scene 05: Atrium Exhibit Wall



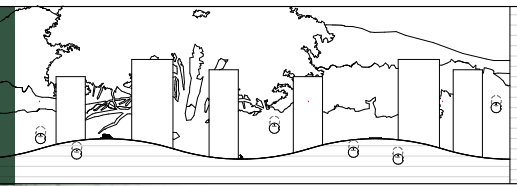
GL-05.02-200
Topic Panel: Restoring Woods, Watersheds & Forests
17"w x 66" or 70"

GL-05.01-200
Main Panel: We Care for the Land
24"w x 76"h

Midpen Exhibits DDII | EDX Exhibits | 07/14/21

Scene 05: Atrium Exhibit Wall

AREA SHOWN
ON THIS PAGE



GL-05.03-350
Discovery Panel Reveal
Marbled murrelet

6" circle

CE-05.03-700
Discovery in Redwood face
Northern Pacific rattlesnake

CE-05.05-400
Tactile
Redwood/Douglas fir cones

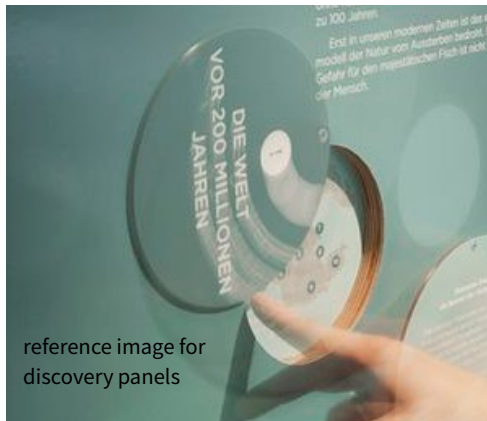
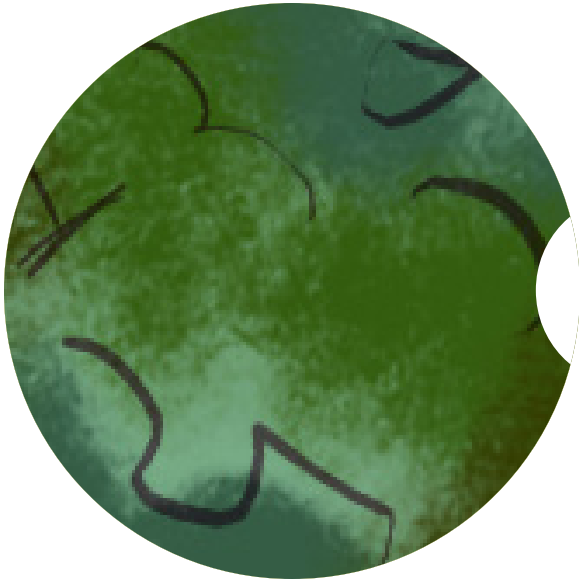
GL-05-04-700 & 800
Ribbon Panels
6"h x 49.625"l

GL-05.02-500
Topic Panel : Protecting Coastal Grasslands
24"w x 76"h

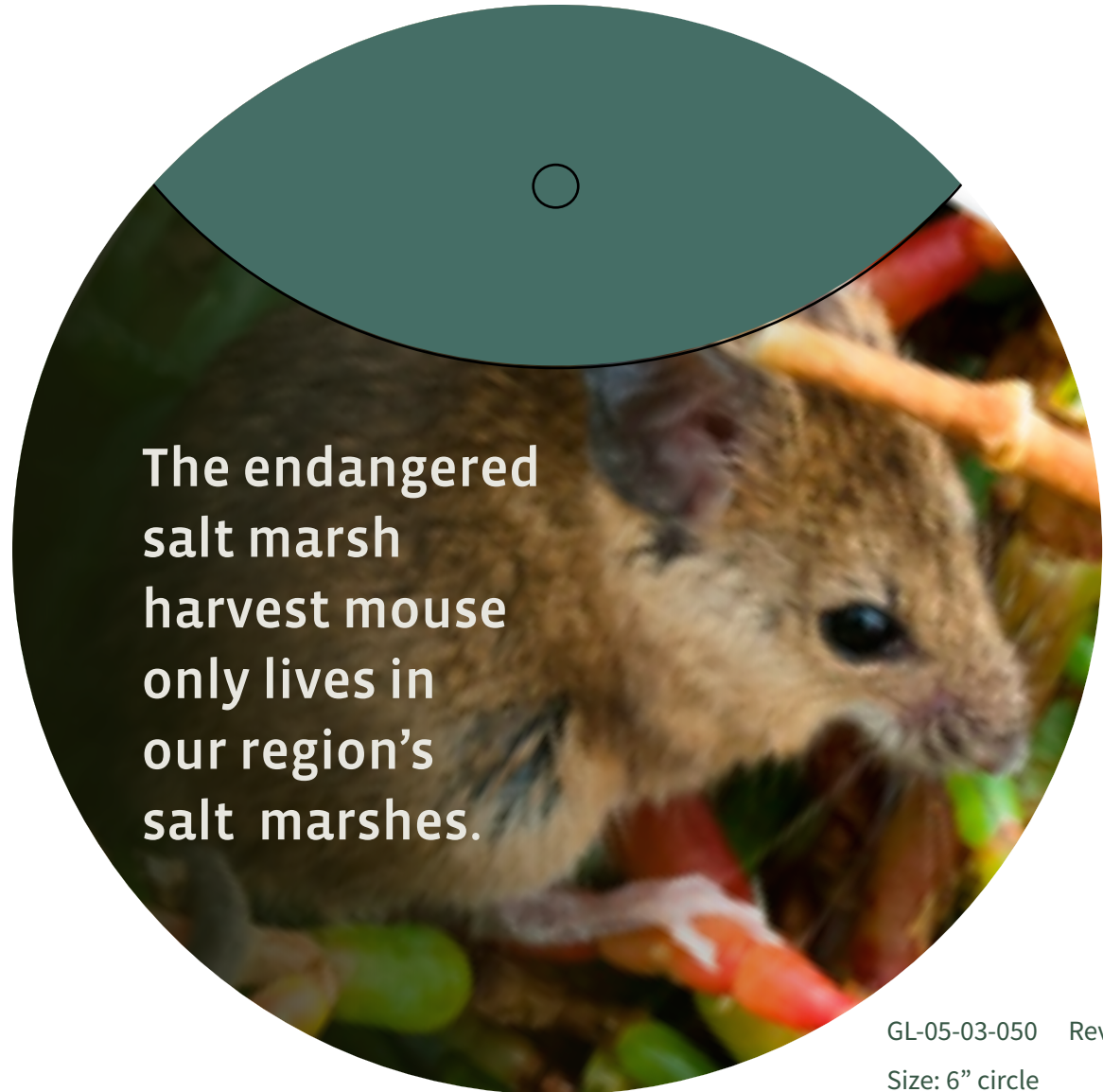
GL-05.01-300
Main Panel: One View, Many Lands
17"w x 66" or 70"

Midpen Exhibits DDII | EDX Exhibits | 07/14/21

Scene 05: Reveal Panels



GL-05-03-025 Discovery in mural
Size: 6" circle
Scale: 50%



GL-05-03-050 Reveal
Size: 6" circle
Scale 100%

Scene 05: Discoverables in Redwood Base

COMPONENTS

CE-05-03-400	Discovery in redwood face: Burrowing owl
CE-05-03-500	Discovery in redwood face: American badger
CE-05-03-600	Discovery in redwood face: California red-legged frog
CE-05-03-700	Discovery in redwood face: northern Pacific rattlesnake



Reference image for painted resin fabrication technique used to create hidden, tactile sculptures. They will be set behind redwood face. Visitors can push circle panel of redwood aside to reveal these hidden animals that live below ground.

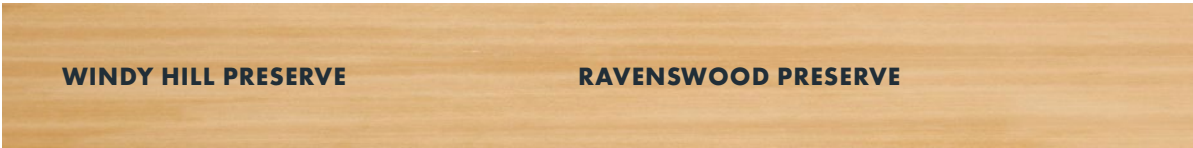


Reference image for discovery elements for children. The Midpen discovery elements in the redwood base can have a cover.

Scene 05: Wavy Ribbon Graphics

COMPONENTS

GL-05-04-100	Wavy Ribbon 1: Name of preserve/ID species
GL-05-04-200	Wavy Ribbon 2: Name of preserve/ID species
GL-05-04-300	Wavy Ribbon 3: Name of preserve/ID species
GL-05-04-400	Wavy Ribbon 4: Name of preserve/ID species
GL-05-04-500	Wavy Ribbon 5: Name of preserve/ID species
GL-05-04-600	Wavy Ribbon 6: Name of preserve/ID species
GL-05-04-700	Wavy Ribbon 7: Name of preserve/ID species
GL-05-04-800	Wavy Ribbon 8: Name of preserve/ID species



GL-05-04-100
Size: 6”h x 49.625”w
Scale: 12.5%



GL-05-04-200
Size: 6”h x 49.625”w
Scale: 12.5%

[owl discoverable below]

Scene 05: Wavy Ribbon Graphics

THORNWOOD PRESERVE

American badger

[badger discoverable below]

MIRAMONTES RIDGE PRESERVE

[bronze tactile]

Anna's hummingbird

[bronze tactile]

grinding stones

scrub oak acorns

RUSSIAN RIDGE PRESERVE

EL CORTE DE MADERA CREEK PRESERVE

California red-legged frog

[frog discoverable below]

PURISIMA CREEK REDWOODS PRESERVE

[bronze tactile]

Douglas fir

coast redwood

northern Pacific rattlesnake

LA HONDA CREEK PRESERVE

[snake discoverable below]

GL-05-04-300
Size: 6”h x 49.625”w
Scale: 12.5%

GL-05-04-400
Size: 6”h x 49.625”w
Scale: 12.5%

GL-05-04-500
Size: 6”h x 49.625”w
Scale: 12.5%

GL-05-04-600
Size: 6”h x 49.625”w
Scale: 12.5%

GL-05-04-700
Size: 6”h x 49.625”w
Scale: 12.5%

GL-05-04-800
Size: 6”h x 49.625”w
Scale: 12.5%

Scene 05: Atrium Exhibit Wall: Tactiles

COMPONENTS

CE-05.05-100 Tactile 1: mt lion/coyote tracks

CE-05.05-200 Tactile 2: Anna's hummingbird

CE-05.05-300 Tactile 3: grinding stones w/ acorns

CE-05.05-400 Tactile 4: redwood/doug fir cones



Reference images for hot-cast bronze fabrication technique to create tactile elements that sit on top of the wavy redwood base.

Scene 06: Atrium Monitor Wall

SCENE 06: Atrium Monitor Wall Purpose

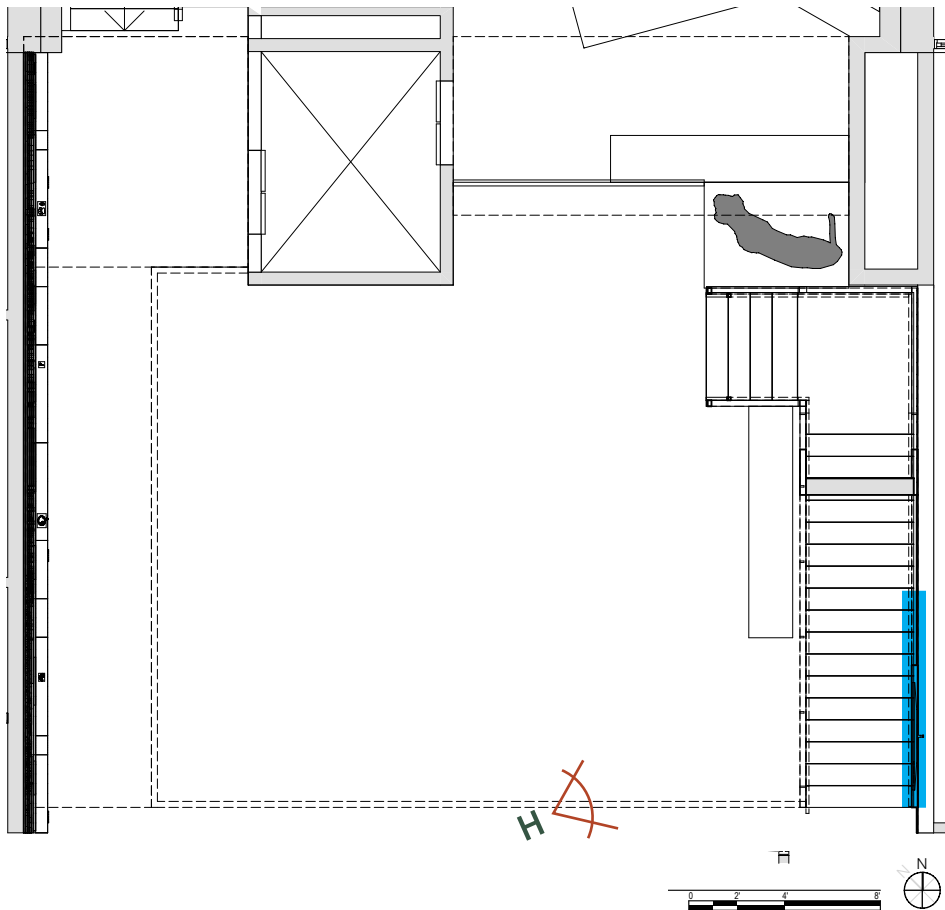
Provide monitor for live feed of public meetings for attendees and to showcase iconic Midpen images and information.

Interpretive Themes:

- Midpen agency

Audience:

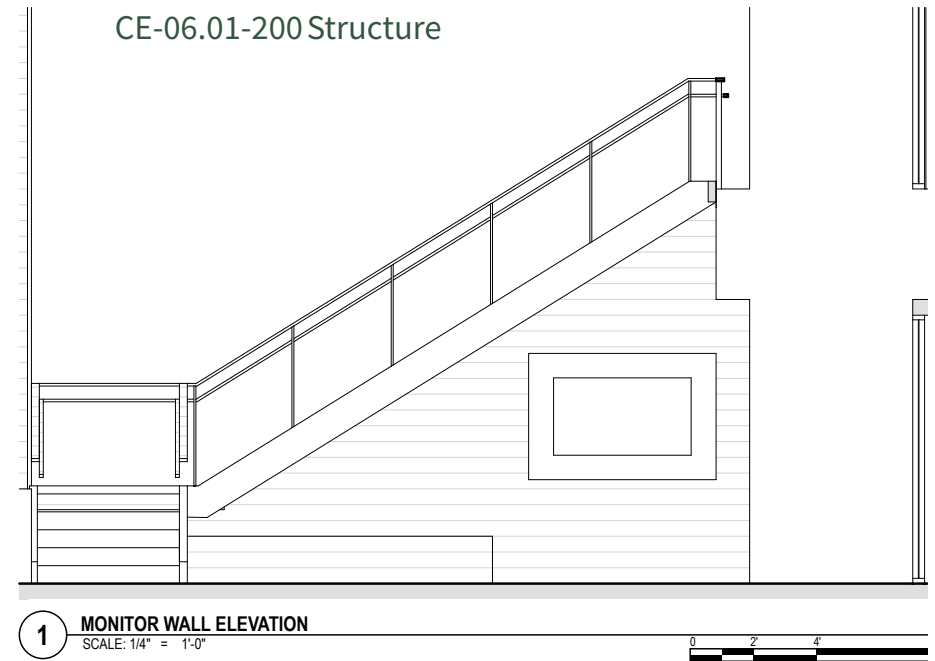
- People who come to Midpen offices to attend public meetings.



Components

EE-06.01-100 Monitor

CE-06.01-200 Structure



Scene 06: Atrium Monitor Wall



Perspective H, close up view of monitor.

Scene 07: Quotes

Scene 07: Quotes Purpose

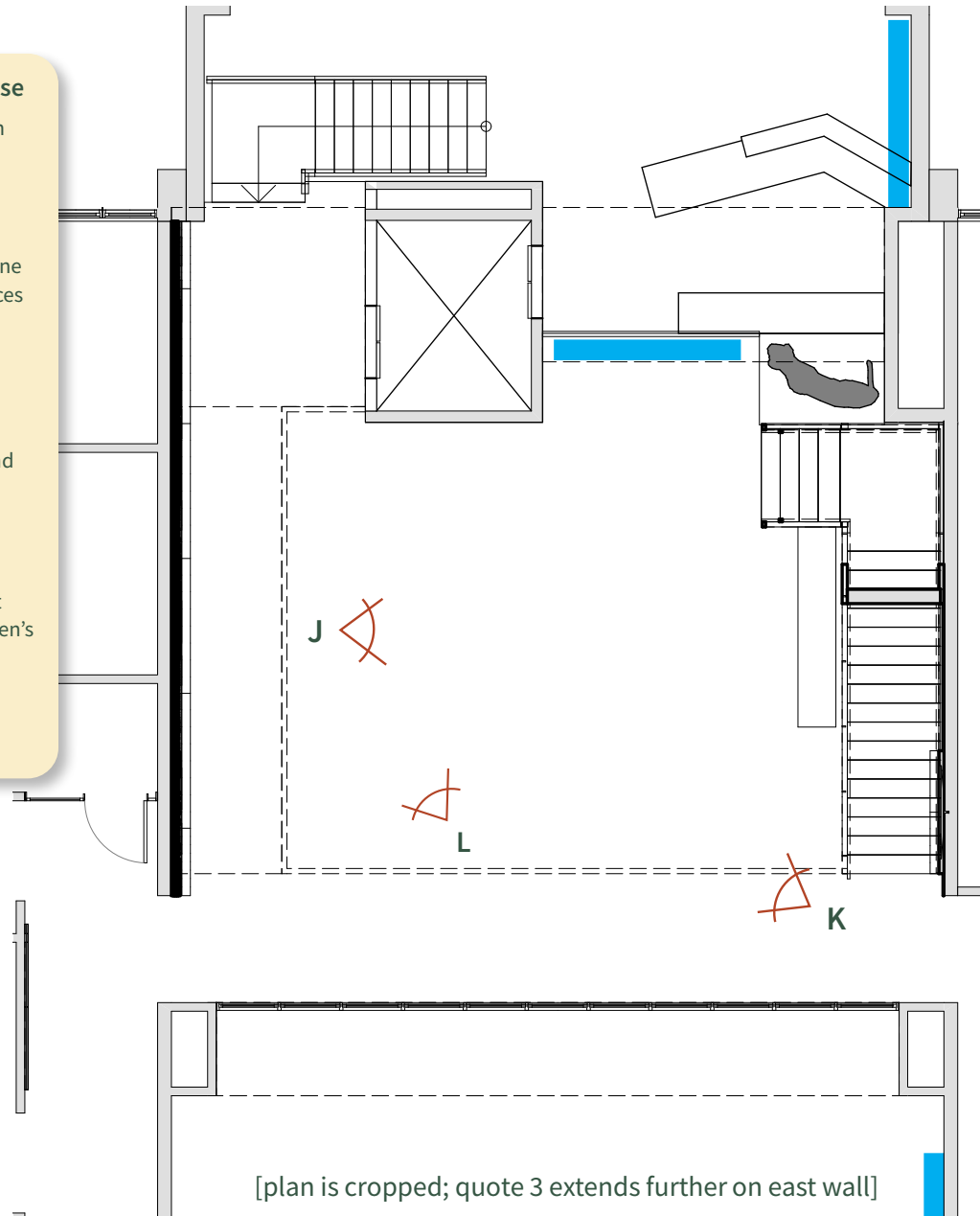
Provide quotes that align with Midpen's values in publicly accessed spaces.

Interpretive Themes:

- Open space is for everyone
- Importance of open spaces
- Midpen agency

Audience:

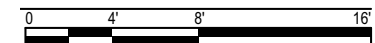
- People who come to Midpen offices for information and to attend meetings.
- Midpen employees, volunteers, and partner organizations.
- People with and without prior knowledge of Midpen's work and Midpen's open space preserves.



GL-07.01-100 Quote 1:
Measure R
at front desk

GL-07.01-200 Quote 2:
Stegner
next to elevator

GL-07.01-300 Quote 3:
Midpen mission
in board room



Scene 07: Quotes

Open space is our green backdrop of hills.
It is rolling grasslands — cool forests in the
Coast Range — orchards and vineyards
in the sun. It is the patch of grass between
communities where children can run.

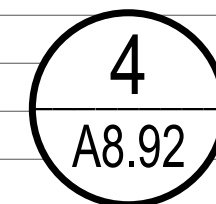
It is uncluttered baylands where water birds
wheel and soar, where blowing cordgrass
yields its blessings of oxygen, where the din
of urban life gives way to the soft sounds
of nature.

It is the serene, unbuilt, unspoiled earth
that awakens all our senses and makes us
whole again...it is room to breathe.

—VOTER INITIATIVE MEASURE R, 1972

GL-07.01-100
Quote in lobby, adjacent to front desk
80" w x 95" h

FRONT DESK



MIDPEN LOGO

Scene 07: Quotes

We simply need that wild country available to us,
even if we never do more than drive to its edge and look in.
For it can be a means of reassuring ourselves of our sanity
as creatures, a part of the geography of hope.

—WALLACE STEGNER, TEACHER, WRITER, OPEN SPACE ADVOCATE

GL-07.01-200
Quote in lobby atrium
148" w x 33" h

Scene 07: Quotes

MIDPENINSULA REGIONAL OPEN SPACE DISTRICT MISSION

To acquire and preserve a regional greenbelt of open space land in perpetuity, protect and restore the natural environment, and provide opportunities for ecologically sensitive public enjoyment and education.

On the San Mateo County Coast, our mission also includes preserving agricultural land of regional significance and rural character, and encouraging viable agricultural use of land resources.

GL-07.01-300
Quote in boardroom
92"w x 50"h

Atrium Lobby View



Perspective J showing view across room with large photowrap above stair and monitor below.

Atrium Lobby View



Perspective K showing view from top of stairs looking down into atrium lobby area with quote, elevator photowrap, and exhibit wall.

Atrium Lobby View



Perspective view L: Exhibit wall showing layering of mural on appleplywood with graphic panels in front. Band in front is made of reclaimed redwood. Inset into mural are discovery panels with small graphics. Inset into the redwood band are discovery tactile elements.