



Midpeninsula Regional
Open Space District

R-21-111
Meeting 21-26
August 25, 2021

AGENDA ITEM 6

AGENDA ITEM

Design of Administrative Office Interpretive Elements

GENERAL MANAGER'S RECOMMENDATION *den*

Approve designs for the final two remaining time-sensitive public interpretive elements that will be fabricated and installed in the future Administrative Office located at 5050 El Camino Real in Los Altos: (1) interior topographic relief model; (2) interior interpretive wall exhibit.

SUMMARY

The Midpeninsula Regional Open Space District (District) contracted with EDX Exhibits to provide planning and design services for public-facing interpretive elements for the future Administrative Office located at 5050 El Camino Real. The project goal is to provide members of the public who visit the office with opportunities to create meaningful personal connections to interpretive themes inspired by the District's work and mission. The General Manager is seeking Board of Directors (Board) design approval of interpretive elements. As designed, the fabrication and installation of the proposed interpretive elements fall within the project budget.

BACKGROUND

Since purchasing the current 330 Distel Circle, Los Altos office building in 1990, the District's success in growing the regional greenbelt, restoring natural lands, and expanding public access has created the need for additional office space. As a forward-thinking and fiscally prudent public agency, the District planned for its long-term office space needs by setting aside general reserve funds. After exploring alternatives, purchasing and repurposing an existing, larger office building and selling the current building to offset costs emerged as the most cost-efficient, environmentally sound long-term solution.

At the July 2017 public meeting, the Board adopted a resolution to enter into a purchase and sale agreement for the building located at 5050 El Camino Real in Los Altos ([R-17-90](#)). Escrow closed on February 1, 2019. Construction to repurpose the building to meet District needs in fulfilling its mission and serving the public started in February 2021 and is scheduled to be completed in March 2022. This new office space presents multiple opportunities to enhance public awareness of the District and foster a deeper connection to the local natural resources and iconic Bay Area landscapes through informative and inspirational interpretive elements. To proceed with the planning and design of the interpretive elements project, the District completed a competitive consultant selection process in the fall of 2020, entering into a contract with EDX Exhibits (EDX) ([R-20-133](#)). EDX was chosen based on their design quality and relevance, expertise and competency, commitment to accessibility and diversity, and overall cost.

The Board approved the interpretive project goals and themes as part of a project brief presented by EDX on January 27, 2021 ([R-21-18](#)). Draft design schematics were presented on March 10, 2021 ([R-21-37](#)) and the Board gave direction on an overall design approach and general tone, mood, and color palette for the project. The Board selected Scheme 1: Bringing the Preserves to the People, which focuses on bringing the preserve experience into the office space by exploring multiple habitats found on District lands. This scheme uses natural and reused materials that reflect what one can find at the preserves, as well as smooth transitions and natural colors to draw people into the preserve experience. This scheme also attempts to stay truer to scale to provide as realistic an experience as possible to foster curiosity and interest in heading out to the land to gain a full sensory preserve experience.

On July 14, 2021 ([R-21-97](#)) the Board approved designs for three time-sensitive interpretive elements: (1) three exterior interpretive signs; (2) four exterior banners; (3) interior wall quotes.

Staff and Consultant Coordination

The Administrative Office project architect, Noll & Tam, created the overall design for the building reconfiguration, including spaces for interpretive elements for which EDX is creating the specific interpretive content. Many of the Phase I interpretive elements are being fabricated and installed as part of the current building construction process. The remaining Phase 2 interpretive elements will be fabricated and installed separately through a separate contract process, once EDX has completed their design.

DISCUSSION

The focus of this item is to receive Board approval and input on designs for the following interpretive elements detailed in Attachment 1.

Topographic Relief Model

EDX has designed a topographic relief model to be located near the reception desk area that highlights the District's boundaries, topography, habitats and preserves. Reading rails will provide information about each preserve, including an image, short description and allowed uses. The model will be fabricated and installed as part of Phase 2.

Interpretive Wall Exhibit

The main lobby has a 24-foot by 9-foot wall space identified for interpretive elements. EDX is designing an illustrative mural that aligns with the chosen scheme of "*Bringing the Preserves to the People*" that highlights the iconic landscapes, habitats, plants and animals found in District preserves using natural and reused materials, smooth transitions, and natural colors to draw people into the preserve experience. Overlaid on the mural are panels containing text and images that align with the approved themes. To support accessibility and foster connection and curiosity, EDX has included touchable objects and discovery moments.

Status of Other Approved Elements

Three Outdoor Interpretive Signs

Noll & Tam identified three locations along the walkway between the sidewalk at El Camino Real and the building's front door for interpretive signs. Noll & Tam selected the sign material and design, and EDX created the sign designs, which were approved by the Board on July 14, 2021. The signs align with the approved project interpretive themes:

- **Midpen agency:** Introducing the whole story and “why” of the District.
- **Importance of open space:** Conveying how we care for the land and the land cares for us.
- **Open space is for everyone:** Inviting personal connections to open space.

Four Outdoor Banners

Noll & Tam identified four locations on the front of the building facing El Camino Real for large banners. Noll & Tam selected the banner material and design, and EDX created the banner designs, which were approved by the Board on July 14, 2021. The banners convey the District’s mission in a way that can be seen from the sidewalk and street. The banner designs focus on the four main elements of the District’s mission:

- Preserving land
- Protecting agriculture
- Restoring natural resources
- Public enjoyment

Wall Quotes

Noll & Tam identified three wall locations within the lobby and board room for quotes that were approved by the Board on July 14, 2021. The District’s two mission statements will be featured in the board room. Measure R language will be featured near the reception desk and a Wallace Stegner quote will be featured in the public lobby area.

Monitor

A 60-inch monitor will be located in the main lobby for use during public meetings and to display informational and interpretive content. The monitor will be installed in the public atrium space along the front stairwell wall as part of the current office construction project. Staff will curate content for the monitor from existing assets.

Large-Scale Wall Images

The following large-scale photographic images are being fabricated and installed as part of the current construction project:

- Image of Russian Ridge Open Space Preserve with Mindego Hill in the background and poppies in the foreground will be located on the back stairwell wall.
- Image of a redwood forest from a District preserve wrapping the elevator shaft.
- Backlit image of Skyline Ridge Open Space Preserve showing Alpine Pond as seen from/near the Daniels Nature Center to be mounted in the hallway.

Project Timeline

The exterior interpretive signs, four exterior banners and wall quotes will be fabricated and installed as part of the current Administrative Office construction project. The topographic relief model and interpretive wall exhibit are subject to a separate competitive Request for Proposals (RFP) process that is already in process. Time is of the essence to allow fabrication to begin in the fall of 2021 with the goal of completing installation before the office project is completed in March 2022.

FISCAL IMPACT

The Fiscal Year 2021-22 (FY22) budget includes \$16,168,483 for the New Administration Office (AO) Facility project #31202 of which \$200,000 is set aside for the interpretive elements. The interpretive elements, as designed, continue to fall within the budget allocation.

BOARD AND COMMITTEE REVIEW

This project has previously come to the full Board of Directors at the following public meetings:

- **November 18, 2020:** The Board awarded a contract to EDX Exhibits to complete phase 1 planning and design. ([R-20-133, meeting minutes](#))
- **January 27, 2021:** The Board reviewed, discussed and approved the project brief, which documents the interpretive foundations that will inform and guide the project. ([R-21-18, meeting minutes](#))
- **March 10, 2021:** The Board reviewed, discussed and approved the Scheme 1 design approach, which provides an overall design approach and general tone, mood and color palette for the project. ([R-21-37, meeting minutes](#))
- **June 2, 2021:** The Board confirmed their preference for use of the aluminum material chosen by the project architect for the four banners on the outside of the building, rather than a cut steel option shown at the March 10, 2021 board meeting. ([R-21-70, meeting minutes](#))
- **July 14, 2021:** The Board reviewed, discussed and approved designs for the exterior banners and interpretive signs, and the interior wall quotes. ([R-21-97, meeting minutes](#))

PUBLIC NOTICE

Public notice was provided as required by the Brown Act.

CEQA COMPLIANCE

Approval of office interpretive elements is not a project subject to the California Environmental Quality Act. Furthermore, the AO Project is categorically exempt from CEQA under Section 15301, Existing Facilities. District staff filed Notices of Exemption with Santa Clara County on September 24, 2020.

NEXT STEPS

If approved, designs for the topographic relief model and interpretive wall exhibit will be fabricated and installed.

Attachment:

1. Draft Designs

Responsible Department Head:
Korrine Skinner, Public Affairs Manager

Prepared by:
Leigh Ann Gessner, Public Affairs Specialist II

Renée Fitzsimons, Interpretation & Education Program Manager

Staff contact:

Leigh Ann Gessner, Public Affairs Specialist II

Midpeninsula Regional Open Space District AO Interpretive Elements Project



Final Design Board Packet

August 25, 2021



200 East Boston St., Seattle, WA 98102 | 206 528-5556 | www.edxseattle.com



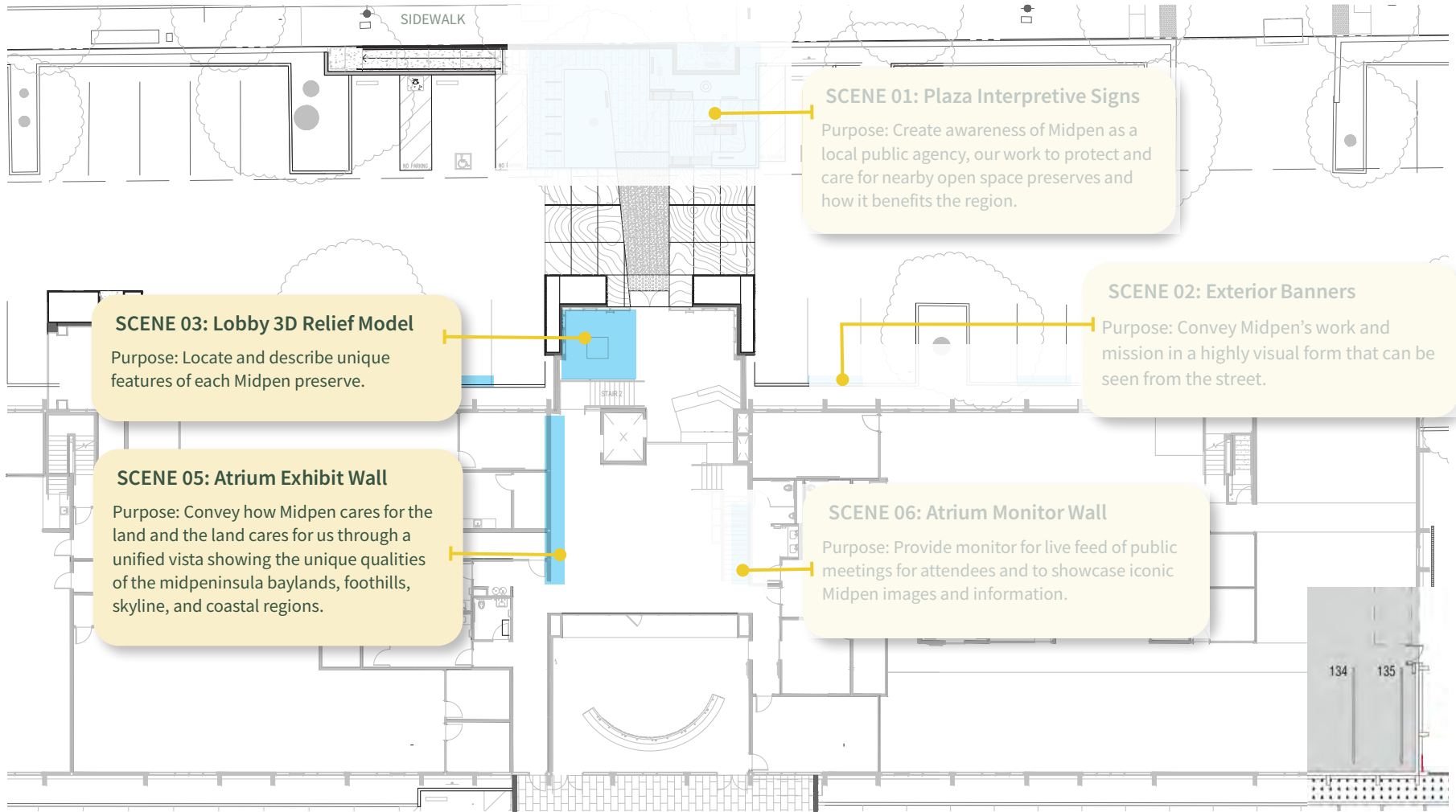


Table of Contents

Site Plan	03
Scene 03: Lobby 3D Relief Model	04
Scene 05: Atrium Exhibit Wall	15

Site Plan

El Camino Real



SCENE 01: Plaza Interpretive Signs
 Purpose: Create awareness of Midpen as a local public agency, our work to protect and care for nearby open space preserves and how it benefits the region.

SCENE 02: Exterior Banners
 Purpose: Convey Midpen’s work and mission in a highly visual form that can be seen from the street.

SCENE 03: Lobby 3D Relief Model
 Purpose: Locate and describe unique features of each Midpen preserve.

SCENE 05: Atrium Exhibit Wall
 Purpose: Convey how Midpen cares for the land and the land cares for us through a unified vista showing the unique qualities of the midpeninsula baylands, foothills, skyline, and coastal regions.

SCENE 06: Atrium Monitor Wall
 Purpose: Provide monitor for live feed of public meetings for attendees and to showcase iconic Midpen images and information.

Various locations

NOT TO SCALE



Scene 07: Quotes
 Purpose: Provide quotes that align with Midpen’s values in publicly accessed spaces.

Scene 03 Lobby 3D Relief Model

SCENE 03: Lobby 3D Relief Model Purpose

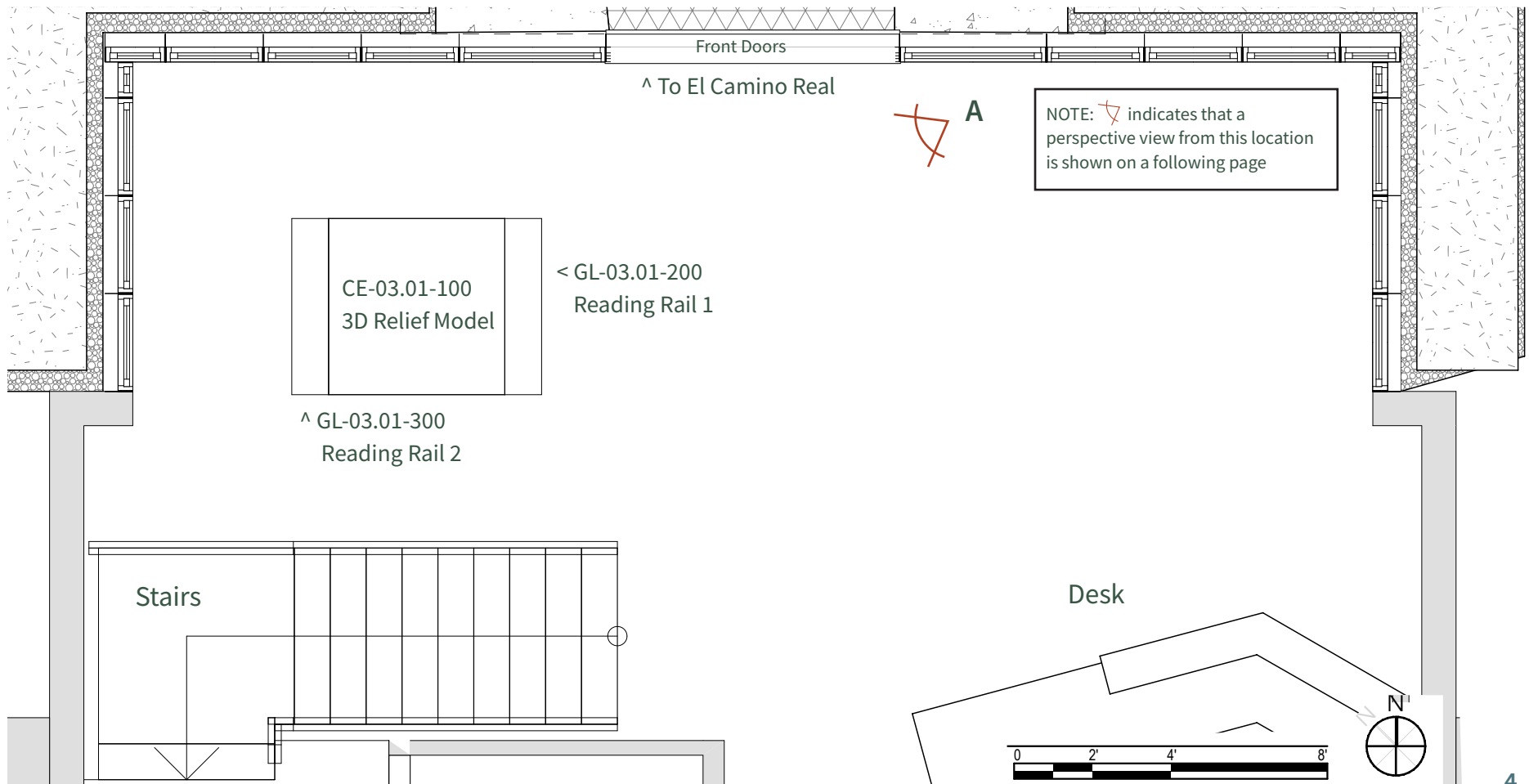
Locate and describe unique features of each Midpen preserve.

Interpretive Themes:

- Open space is for everyone
- Midpen agency

Audience:

- People who come to Midpen offices for information and to attend meetings.
- Midpen employees, volunteers, and partner organizations.
- People with and without prior knowledge of Midpen's work and Midpen's open space preserves.



Scene 03 Lobby 3D Relief Model



Perspective view A: 3D relief model of region showing Midpen preserves. Relief model will show vertically exaggerated topography to accentuate the geography. Note that north on the model aligns roughly with geographic north.

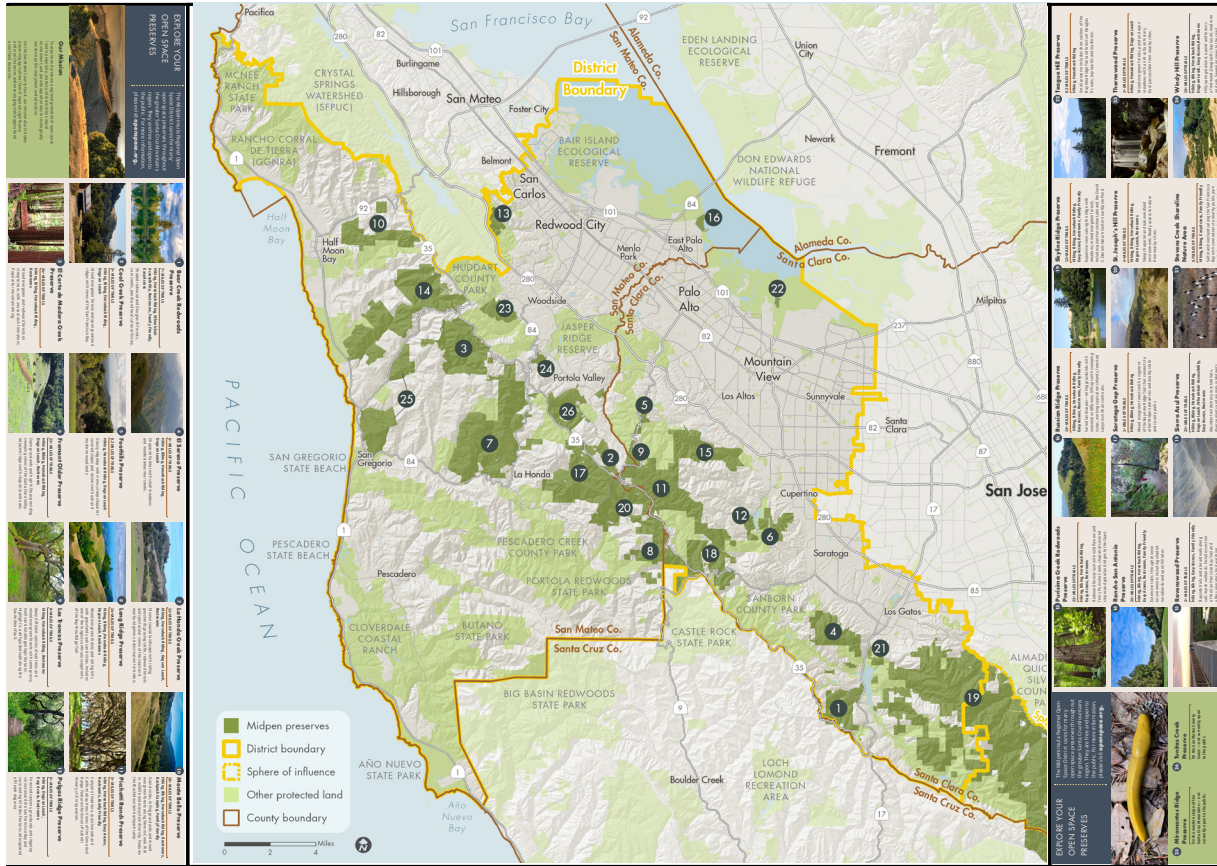


Scene 03 Lobby 3D Relief Model

Fused Aluminum panel

Painted fiberglass 3D relief model

Fused Aluminum panel



GL-03.01-200
 Size: 54" w x 12" h
 Scale: 1"=1'0" or 8.3% of actual size

CE-03.01-100
 Size: 54" w x 54" h
 Scale: 1"=1'0" or 8.3% of actual size

GL-03.01-300
 Size: 54" w x 12" h
 Scale: 1"=1'0" or 8.3% of actual size

Scene 03: Lobby 3D Relief Model Reference Images



Reference image for 3D relief model.

Suggested technique is a Fiberglas map with gelcoat top coat, UVC inhibiting paints. Text and labels are applied last, and the entire model is coated with a UV-blocker clear coat to protect from sunlight.

Reference image for 3D relief model and reading rail





Scene 03 Lobby 3D Relief Model Features

CE-03.01-100

3D RELIEF MODEL

Midpen Preserves to be identified on model:

- Bear Creek Redwoods
- Coal Creek
- El Corte de Madera Creek
- El Sereno
- Foothills
- Fremont Older
- La Honda Creek
- Long Ridge
- Los Trancos
- Monte Bello Preserve
- Picchetti Ranch
- Pulgas Ridge
- Purisima Creek Redwoods
- Rancho San Antonio
- Ravenswood
- Russian Ridge
- Saratoga Gap
- Sierra Azul
- Skyline Ridge
- St. Joseph's Hill
- Stevens Creek Shoreline
- Teague Hill
- Thornewood
- Windy Hill
- Miramontes Ridge
- Tunitas Creek

Other features to be identified on model:


- **State routes:** 1, 9, 17, 35, 82, 84, 85, 87, 92, 101, 237, 280, 680, and 880.
- **Towns:** Pacifica, Burlingame, Hillsborough, San Mateo, Foster City, Belmont, San Carlos, Redwood City, Menlo Park, Palo Alto, East Palo Alto, Fremont, Newark, Union City, Woodside, Portola Valley, Mountain View, Los Altos, Los Altos Hills, Sunnyvale, Santa Clara, Milpitas, Half Moon Bay, San Jose, Cupertino, Saratoga, Los Gatos, San Gregorio, La Honda, Pescadero, Boulder Creek
- **Bodies of water:** Pacific Ocean, San Francisco Bay, Half Moon Bay
- **Midpen overall service area boundaries**
- **Possible shading to denote main habitat types,** in consultation with Midpen GIS department



Scene 03 Lobby 3D Relief Model Graphics

EXPLORE YOUR OPEN SPACE PRESERVES

The Midpeninsula Regional Open Space District cares for many open space preserves throughout the greater Santa Cruz Mountains region. They are free and open to the public. For more information, please visit openspace.org.



Our Mission

To acquire and preserve a regional greenbelt of open space land in perpetuity, protect and restore the natural environment, and provide opportunities for ecologically sensitive public enjoyment and education.

On the San Mateo County Coast, our mission also includes preserving agricultural land of regional significance and rural character, and encouraging viable agricultural use of land resources.

<p>1 Bear Creek Redwoods Preserve 7+ MILES OF TRAILS Hiking, Horseback Riding, Wheelchair Accessibility, Restrooms, Family Friendly, Easy Access Shaded redwood and Douglas fir forests, cool creeks, ponds and local cultural history.</p>	<p>4 El Sereno Preserve 6+ MILES OF TRAILS Hiking, Biking, Horseback Riding, Dogs on Leash Chaparral habitat with small meadows and wooded areas near creeks.</p>	<p>7 La Honda Creek Preserve 11+ MILES OF TRAILS Hiking, Horseback Riding, Dogs on Leash, Restrooms Diverse coastal landscape with rolling grasslands, grazing cattle, redwood forests and spectacular views of the coast and nearby ridgelines. A destination for birders.</p>	<p>10 Monte Bello Preserve 18+ MILES OF TRAILS Hiking, Biking, Horseback Riding, Restrooms, Backpack Camping, Family Friendly Grand vistas, rolling grasslands and mixed evergreen forests along Stevens Creek. Rich in wildlife and ecosystem diversity. Features the Black Mountain ranch camp.</p>
<p>2 Coal Creek Preserve 3+ MILES OF TRAILS Hiking, Biking, Horseback Riding, Dogs on Leash Mixed evergreen forests and open grassland ridges with views of the San Francisco Bay.</p>	<p>5 Foothills Preserve 0.2 MILES OF TRAILS Hiking, Horseback Riding, Dogs on Leash Grassy ridgetop with views, steep chaparral-covered slopes and ravines with oak and madrone woodlands.</p>	<p>8 Long Ridge Preserve 14+ MILES OF TRAILS Hiking, Biking, Horseback Riding, Dogs on Leash, Restrooms Mixed evergreen forests and rolling hills with grasslands, oaks and vistas. Includes one of the longest continuous segments of the Bay Area Ridge Trail.</p>	<p>11 Picchetti Ranch Preserve 3+ MILES OF TRAILS Hiking, Horseback Riding, Easy Access, Restrooms, Family Friendly Canyon of madrone, coast live oak and California bay trees. Views of the Sierra Azul Range. Features the historic Picchetti Winery, still in operation.</p>
<p>3 El Corte de Madera Creek Preserve 34+ MILES OF TRAILS Hiking, Biking, Horseback Riding, Restrooms Mixed evergreen and redwood forests on steep terrain, with unusual rock formations. Popular for mountain biking.</p>	<p>6 Fremont Older Preserve 12+ MILES OF TRAILS Hiking, Biking, Horseback Riding, Dogs on Leash, Restrooms Open grasslands and high hills providing sweeping views of the Santa Clara Valley. Adjacent ridges with chaparral and oaks.</p>	<p>9 Los Trancos Preserve 6+ MILES OF TRAILS Hiking, Horseback Riding, Restrooms Many different species of oak trees and mixed evergreen forests with some grassy knolls and notable geologic features. Highlight is a self-guided walk along the San Andreas Fault.</p>	<p>12 Pulgas Ridge Preserve 6+ MILES OF TRAILS Hiking, Dogs on Leash, Easy Access, Restrooms Forested canyons, grasslands and ridgetop views toward the San Francisco Bay and surrounding hillsides. Features a designated off-leash dog area.</p>

GL-03.01-200
Size: 54”w x 12”h
Scale: 19.75%

EXPLORE YOUR OPEN SPACE PRESERVES

The Midpeninsula Regional Open Space District cares for many open space preserves throughout the greater Santa Cruz Mountains region. They are free and open to the public. For more information, please visit openspace.org.



25 Miramontes Ridge Preserve
On the western slope of the Santa Cruz Mountains — not currently open to the public.

26 Tunitas Creek Preserve
On the San Mateo County Coast — not currently open to the public.

<p>13 Purisima Creek Redwoods Preserve 22+ MILES OF TRAILS Hiking, Biking, Horseback Riding, Easy Access, Restrooms Redwood forests lush with wildflowers and ferns, Purisima Creek, chaparral-covered slopes and grassland ridges to the Coast.</p>	<p>16 Russian Ridge Preserve 13+ MILES OF TRAILS Hiking, Biking, Horseback Riding, Easy Access, Restrooms, Family Friendly Varied landscapes—rolling grasslands with seasonal wildflowers, hillsides with sweeping vistas, working coastal ranchlands, forested canyons with ancient oaks.</p>	<p>19 Skyline Ridge Preserve 12+ MILES OF TRAILS Hiking, Biking, Horseback Riding, Easy Access, Restrooms, Family Friendly Expansive views along the ridge with meadows, mixed evergreen forests. Includes quiet Horseshoe Lake and the David C. Daniels Nature Center near Alpine Pond.</p>	<p>22 Teague Hill Preserve 0.2 MILES OF TRAILS Hiking, Horseback Riding Small preserve includes short section of the Bay Area Ridge Trail and forests of Douglas fir, oaks, bay laurels and madrones.</p>
<p>14 Rancho San Antonio Preserve 25+ MILES OF TRAILS Hiking, Biking, Horseback Riding, Easy Access, Restrooms, Family Friendly Extensive trails through diverse environments including shaded woodlands and open hillsides.</p>	<p>17 Saratoga Gap Preserve 1+ MILES OF TRAILS Hiking, Biking, Horseback Riding Mixed evergreen forests with a segment of the Bay Area Ridge Trail that connects to other Midpen preserves and nearby state and county parks.</p>	<p>20 St. Joseph’s Hill Preserve 4+ MILES OF TRAILS Hiking, Biking, Horseback Riding, Dogs on Leash, Restrooms Steep chaparral and oak woodland environments. Ready access to nature from nearby cities.</p>	<p>23 Thornwood Preserve 1+ MILES OF TRAILS Hiking, Horseback Riding, Dogs on Leash Mixed evergreen forests, pond and open meadows with a rich cultural history. Easily accessible from nearby cities.</p>
<p>15 Ravenswood Preserve 2+ MILES OF TRAILS Hiking, Biking, Easy Access, Family Friendly Bayside trails and a boardwalk along salt marsh wetlands. Includes section of the San Francisco Bay Trail and offers migratory bird watching.</p>	<p>18 Sierra Azul Preserve 25+ MILES OF TRAILS Hiking, Biking, Horseback Riding, Dogs on Leash, Wheelchair Accessibility, Easy Access, Restrooms Abundant wilderness, rare habitats, diverse plants and animals in Midpen’s largest preserve. Includes spectacular views from Mount Umunhum.</p>	<p>21 Stevens Creek Shoreline Nature Area 0.7 MILES OF TRAILS Hiking, Biking, Easy Access, Family Friendly Salt marsh wetlands along the San Francisco Bay with connections to nearby public park trails. Easy viewing of shorebirds and ducks.</p>	<p>24 Windy Hill Preserve 13+ MILES OF TRAILS Hiking, Biking, Horseback Riding, Dogs on Leash, Easy Access, Restrooms Hilly open grassland, a pond and forests of redwood, Douglas fir, bay laurel, madrone and oak. Sweeping views to the coast and the San Francisco Bay from the summit of Windy Hill.</p>

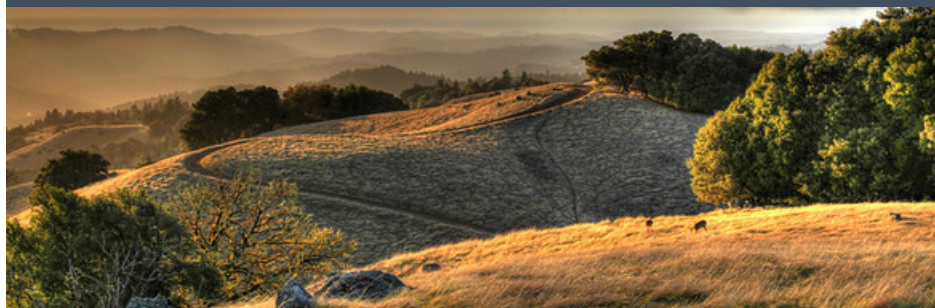
GL-03.01-300
Size: 54”w x 12”h
Scale: 19.75%



Scene 03 Lobby 3D Relief Model Graphics

EXPLORE YOUR OPEN SPACE PRESERVES

The Midpeninsula Regional Open Space District cares for many open space preserves throughout the greater Santa Cruz Mountains region. They are free and open to the public. For more information, please visit [openspace.org](https://www.openspace.org).



Our Mission

To acquire and preserve a regional greenbelt of open space land in perpetuity, protect and restore the natural environment, and provide opportunities for ecologically sensitive public enjoyment and education.

On the San Mateo County Coast, our mission also includes preserving agricultural land of regional significance and rural character, and encouraging viable agricultural use of land resources.

GL-03.01-200
ENLARGED FOR LEGIBILITY



1 Bear Creek Redwoods Preserve

7+ MILES OF TRAILS

Hiking, Horseback Riding, Wheelchair Accessibility, Restrooms, Family Friendly, Easy Access

Shaded redwood and Douglas fir forests, cool creeks, ponds and local cultural history.

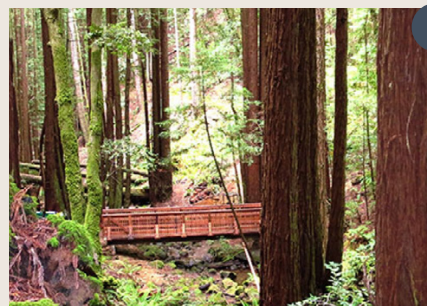


2 Coal Creek Preserve

3+ MILES OF TRAILS

Hiking, Biking, Horseback Riding, Dogs on Leash

Mixed evergreen forests and open grassland ridges with views of the San Francisco Bay.



3 El Corte de Madera Creek Preserve

34+ MILES OF TRAILS

Hiking, Biking, Horseback Riding, Restrooms

Mixed evergreen and redwood forests on steep terrain, with unusual rock formations. Popular for mountain biking.

Scene 03 Lobby 3D Relief Model Graphics



4 El Sereno Preserve

6+ MILES OF TRAILS

Hiking, Biking, Horseback Riding, Dogs on Leash

Chaparral habitat with small meadows and wooded areas near creeks.



7 La Honda Creek Preserve

11+ MILES OF TRAILS

Hiking, Horseback Riding, Dogs on Leash, Restrooms

Diverse coastal landscape with rolling grasslands, grazing cattle, redwood forests and spectacular views of the coast and nearby ridgelines. A destination for birders.

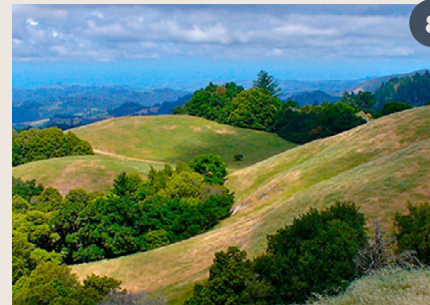


5 Foothills Preserve

0.2 MILES OF TRAILS

Hiking, Horseback Riding, Dogs on Leash

Grassy ridgetop with views, steep chaparral-covered slopes and ravines with oak and madrone woodlands.

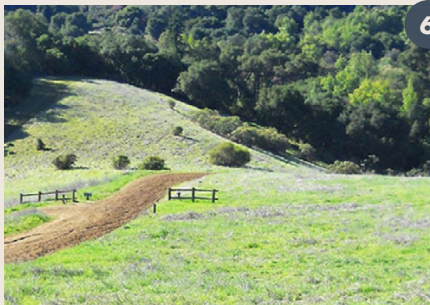


8 Long Ridge Preserve

14+ MILES OF TRAILS

Hiking, Biking, Horseback Riding, Dogs on Leash, Restrooms

Mixed evergreen forests and rolling hills with grasslands, oaks and vistas. Includes one of the longest continuous segments of the Bay Area Ridge Trail.



6 Fremont Older Preserve

12+ MILES OF TRAILS

Hiking, Biking, Horseback Riding, Dogs on Leash, Restrooms

Open grasslands and high hilltops providing sweeping views of the Santa Clara Valley. Adjacent ridges with chaparral and oaks.



9 Los Trancos Preserve

6+ MILES OF TRAILS

Hiking, Horseback Riding, Restrooms

Many different species of oak trees and mixed evergreen forests with some grassy knolls and notable geologic features. Highlight is a self-guided walk along the San Andreas Fault.

GL-03.01-200
ENLARGED FOR LEGIBILITY

Scene 03 Lobby 3D Relief Model Graphics

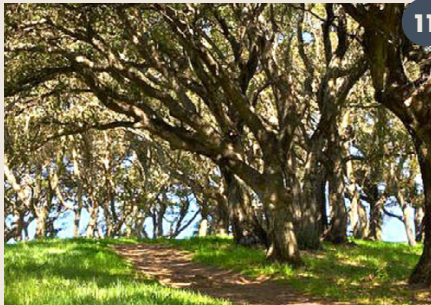


10 Monte Bello Preserve

18+ MILES OF TRAILS

Hiking, Biking, Horseback Riding, Restrooms, Backpack Camping, Family Friendly

Grand vistas, rolling grasslands and mixed evergreen forests along Stevens Creek. Rich in wildlife and ecosystem diversity. Features the Black Mountain backpack camp.

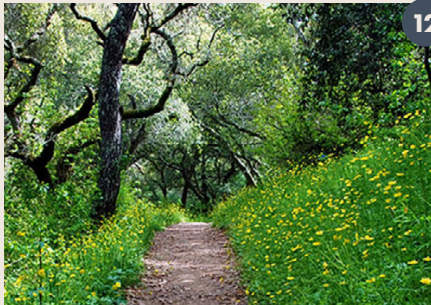


11 Picchetti Ranch Preserve

3+ MILES OF TRAILS

Hiking, Horseback Riding, Easy Access, Restrooms, Family Friendly

Canyon of madrone, coast live oak and California bay trees. Views of the Sierra Azul Range. Features the historic Picchetti Winery, still in operation.



12 Pulgas Ridge Preserve

6+ MILES OF TRAILS

Hiking, Dogs on Leash, Easy Access, Restrooms

Forested canyons, grasslands and ridgetop views toward the San Francisco Bay and surrounding hillsides. Features a designated off-leash dog area.

GL-03.01-200
ENLARGED FOR LEGIBILITY

EXPLORE YOUR OPEN SPACE PRESERVES

The Midpeninsula Regional Open Space District cares for many open space preserves throughout the greater Santa Cruz Mountains region. They are free and open to the public. For more information, please visit [openspace.org](https://www.openspace.org).



25 Miramontes Ridge Preserve

On the western slope of the Santa Cruz Mountains — not currently open to the public.

26 Tunitas Creek Preserve

On the San Mateo County Coast — not currently open to the public.

GL-03.01-300
ENLARGED FOR LEGIBILITY

Scene 03 Lobby 3D Relief Model Graphics



13 Purisima Creek Redwoods Preserve

22+ MILES OF TRAILS

Hiking, Biking, Horseback Riding, Easy Access, Restrooms

Redwood forests lush with wildflowers and ferns, Purisima Creek, chaparral-covered slopes and grassland ridges to the Coast.

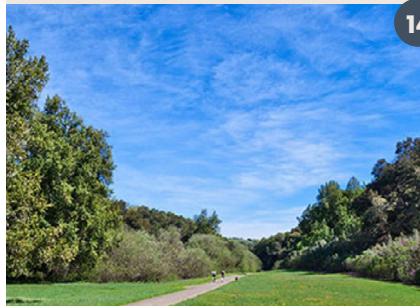


16 Russian Ridge Preserve

13+ MILES OF TRAILS

Hiking, Biking, Horseback Riding, Easy Access, Restrooms, Family Friendly

Varied landscapes—rolling grasslands with seasonal wildflowers, hilltops with sweeping vistas, working coastal ranchlands, forested canyons with ancient oaks.

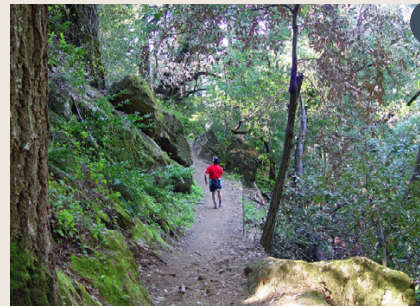


14 Rancho San Antonio Preserve

25+ MILES OF TRAILS

Hiking, Biking, Horseback Riding, Easy Access, Restrooms, Family Friendly

Extensive trails through diverse environments including shaded woodlands and open hillsides.



17 Saratoga Gap Preserve

1+ MILES OF TRAILS

Hiking, Biking, Horseback Riding

Mixed evergreen forests with a segment of the Bay Area Ridge Trail that connects to other Midpen preserves and nearby state and county parks.

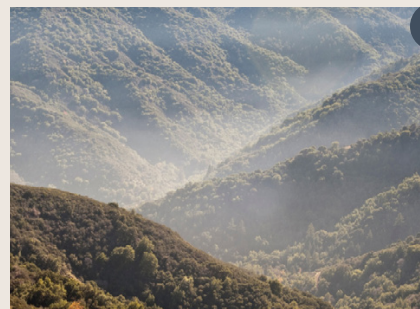


15 Ravenswood Preserve

2+ MILES OF TRAILS

Hiking, Biking, Easy Access, Family Friendly

Bayside trails and a boardwalk along salt marsh wetlands. Includes section of the San Francisco Bay Trail and offers migratory bird watching.



18 Sierra Azul Preserve

25+ MILES OF TRAILS

Hiking, Biking, Horseback Riding, Dogs on Leash, Wheelchair Accessibility, Easy Access, Restrooms

Abundant wilderness, rare habitats, diverse plants and animals in Midpen's largest preserve. Includes spectacular views from Mount Umunhum.

GL-03.01-300
ENLARGED FOR LEGIBILITY

Scene 03 Lobby 3D Relief Model Graphics



19 Skyline Ridge Preserve

12+ MILES OF TRAILS

Hiking, Biking, Horseback Riding, Easy Access, Restrooms, Family Friendly

Expansive views along the ridge with meadows, mixed evergreen forests. Includes quiet Horseshoe Lake and the David C. Daniels Nature Center near Alpine Pond.



22 Teague Hill Preserve

0.2 MILES OF TRAILS

Hiking, Horseback Riding

Small preserve includes short section of the Bay Area Ridge Trail and forests of Douglas fir, oaks, bay laurels and madrones.



20 St. Joseph's Hill Preserve

4+ MILES OF TRAILS

Hiking, Biking, Horseback Riding, Dogs on Leash, Restrooms

Steep chaparral and oak woodland environments. Ready access to nature from nearby cities.



23 Thornewood Preserve

1+ MILES OF TRAILS

Hiking, Horseback Riding, Dogs on Leash

Mixed evergreen forests, pond and open meadows with a rich cultural history. Easily accessible from nearby cities.

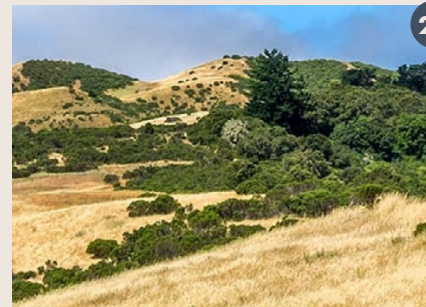


21 Stevens Creek Shoreline Nature Area

0.7 MILES OF TRAILS

Hiking, Biking, Easy Access, Family Friendly

Salt marsh wetlands along the San Francisco Bay with connections to nearby public park trails. Easy viewing of shorebirds and ducks.



24 Windy Hill Preserve

13+ MILES OF TRAILS

Hiking, Biking, Horseback Riding, Dogs on Leash, Easy Access, Restrooms

Hilly open grassland, a pond and forests of redwood, Douglas fir, bay laurel, madrone and oak. Sweeping views to the coast and the San Francisco Bay from the summit of Windy Hill.

GL-03.01-300
ENLARGED FOR LEGIBILITY

Scene 05: Atrium Exhibit Wall

SCENE 05: Exhibit Wall Purpose

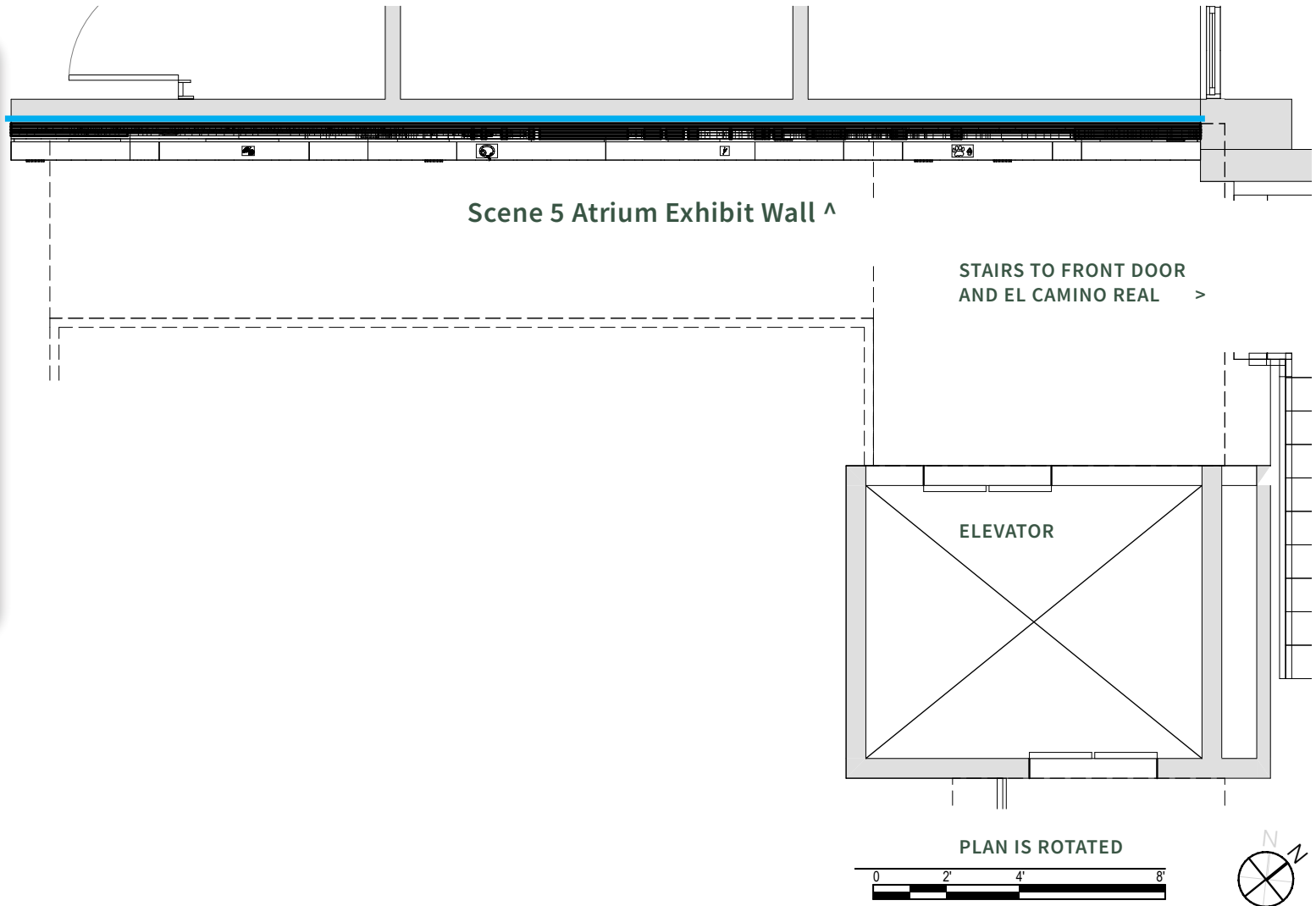
Convey how Midpen cares for the land and the land cares for us through a unified vista showing the unique qualities of the midpeninsula baylands, foothills, skyline, and coastal regions.

Interpretive Themes:

- Open space is for everyone
- Importance of open spaces
- Midpen agency

Audience:

- People who come to Midpen offices for information and to attend meetings.
- Midpen employees, volunteers, and partner organizations.
- People with and without prior knowledge of Midpen's work and Midpen's open space preserves.



Scene 05: Atrium Exhibit Wall



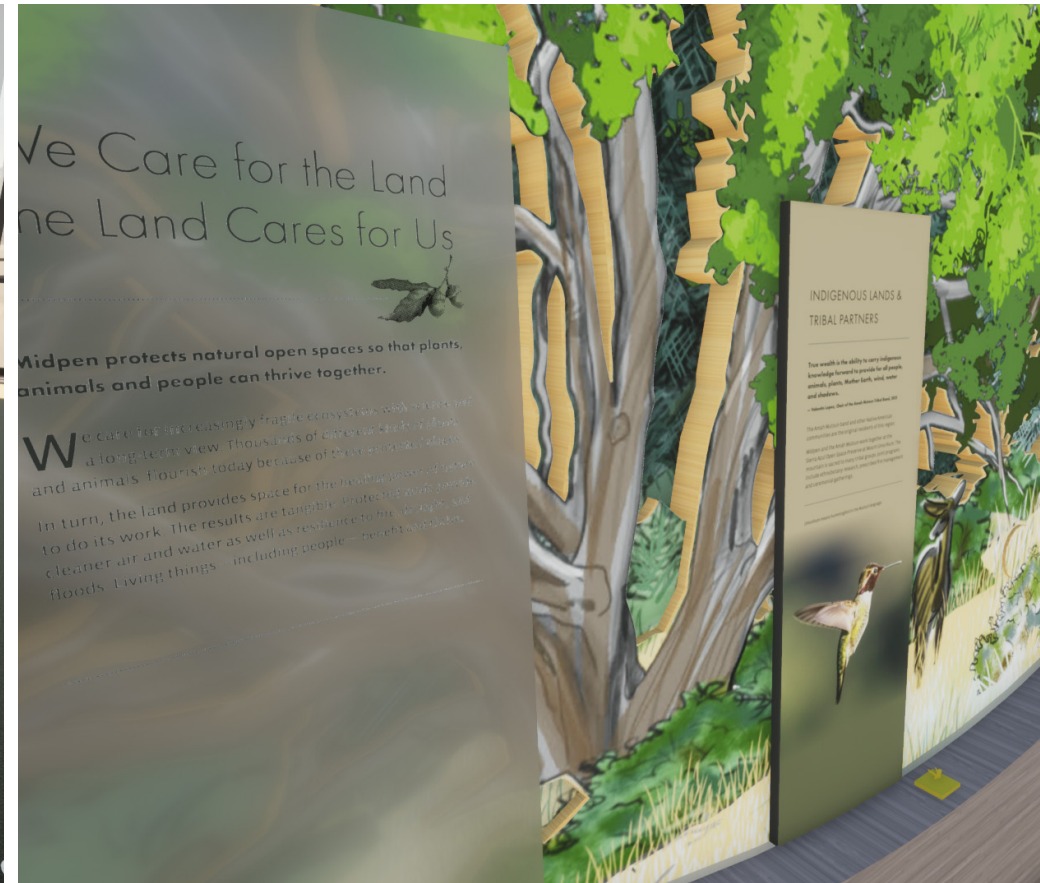
Exhibit wall showing layering of mural on appleplywood with graphic panels in front. Band in front is made of reclaimed redwood. Inset into mural are discovery panels with small graphics. Inset into the redwood band are discovery tactile elements.

Scene 05: Atrium Exhibit Wall



Detail of exhibit wall showing layering of illustrated mural on appleplywood with graphic panels in front. A subtle band of lighting shines up onto the mural from the top edge of the redwood band below. On top of redwood band will be a ribbon of graphics identifying species and preserves. Tactile elements are perched on top of the redwood band.

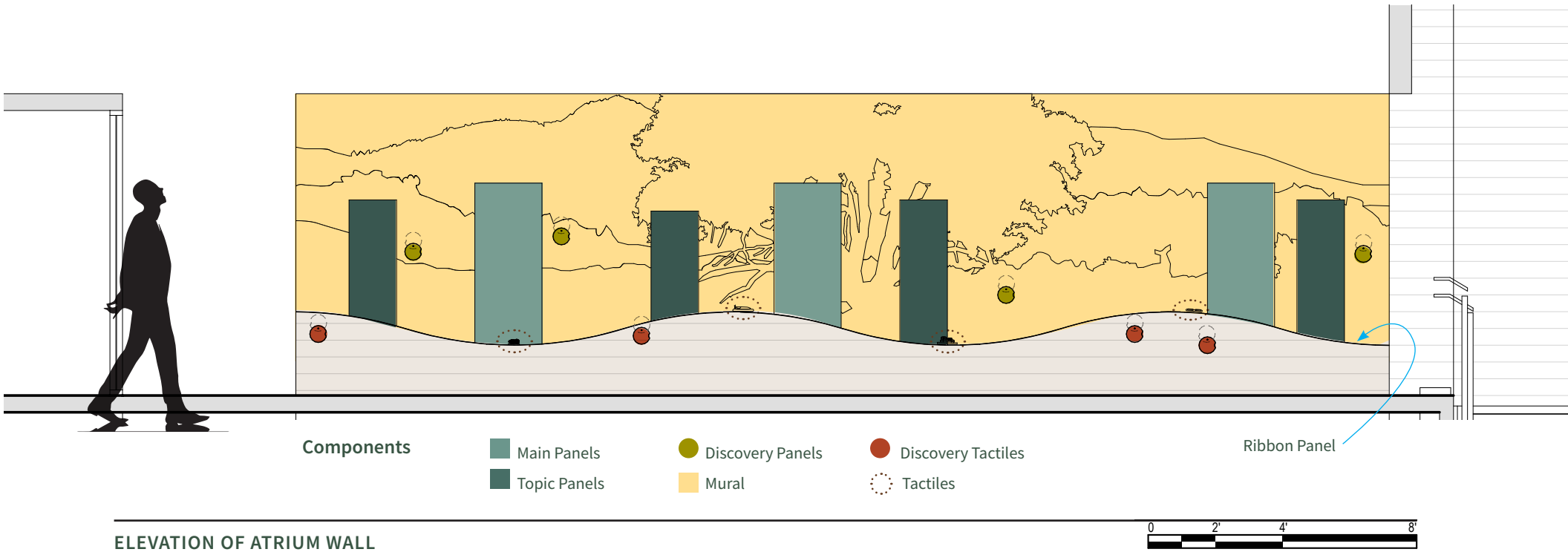
Scene 05: Atrium Exhibit Wall



Details: Exhibit wall showing layering of mural on appleplywood with graphic panels in front. Band in front is made of reclaimed redwood. Inset into mural are discovery panels with small graphics. Inset into the redwood band are discovery tactile elements.

Scene 05: Atrium Exhibit Wall, Key to Element Types

In this elevation the colors are a key to show each type and quantity of different elements represented on the wall. They do not represent actual colors in the exhibit.



ELEVATION OF ATRIUM WALL

Scene 05: Atrium Exhibit Wall Mural Sketch

Layers of the Appleply mural, with direct-printed full-color imagery

GL-05.06-100 First Layer: closest to visitor, includes oak tree and foreground

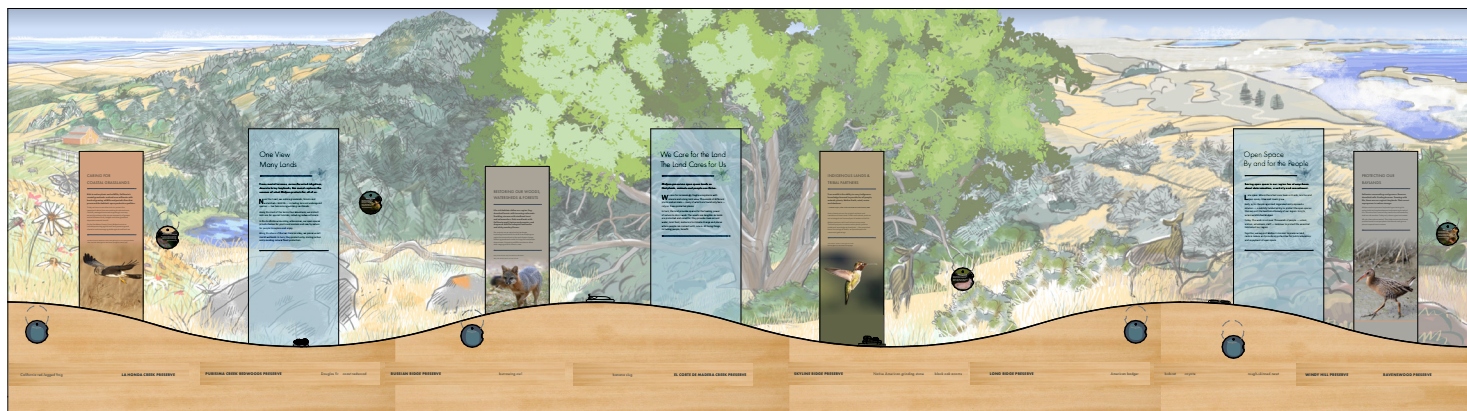
GL-05.06-120 Second Layer: encompasses middle ground

GL-05.06-130 Third Layer: includes background and features on horizon

GL-05.06-140 Fourth Layer: farthest from visitor, includes elements in far distance

NOTE: The mural illustration is a draft sketch showing the correct geographical arrangement of key features including topography and large plants. The final artwork will be completed in Phase II during exhibit fabrication.

The mural shows a geographically accurate view looking north up the Peninsula and showcasing the main habitats Midpen protects and cares for. Left to right: Coastal, Skyline, Foothills and Baylands regions.

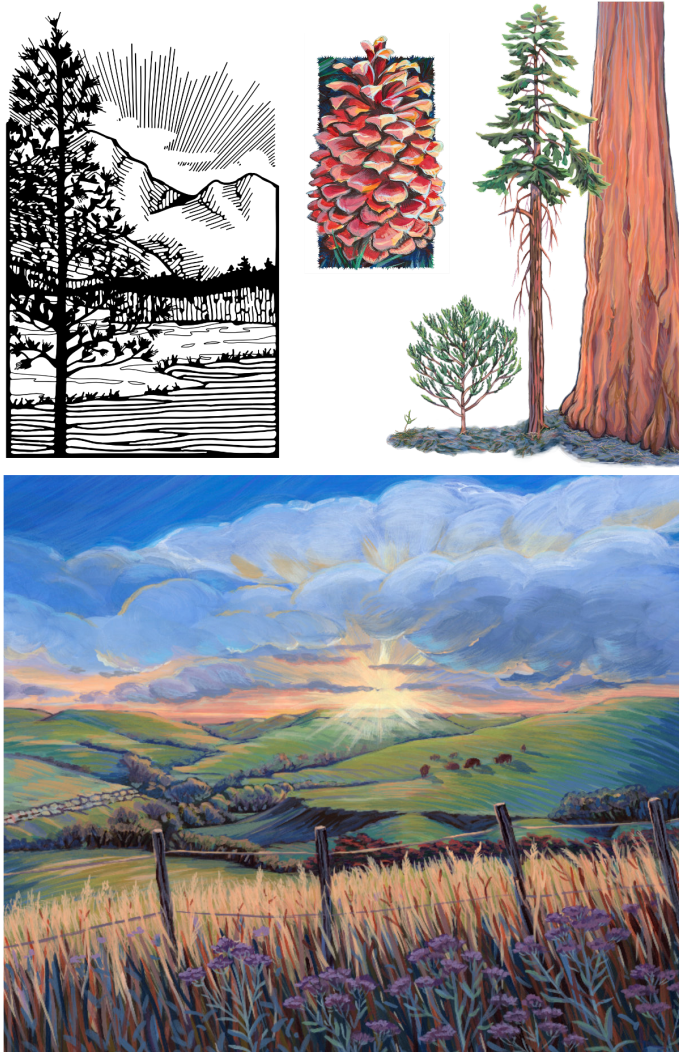


Mural sketch with redwood band, tactiles, and graphics in place.

Scene 05: Atrium Exhibit Wall Examples from Mural Artist

Artist name: Joyce Mihran Turley

Joyce sketched the image for this deliverable. These are examples of her finished work.





Scene 05: Intro Panels

One View Many Lands



From coastal terraces, across forested ridgelines, down to briny baylands, this mural captures the essence of what Midpen protects for all of us.

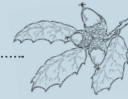
Near the Coast, we restore grasslands, forests and watersheds. Wildlife — including rare and endangered species — live here among working ranchlands.

Along the crest of the Santa Cruz Mountains, we protect and care for special habitats, like redwood forests.

In the foothills surrounding urban areas, our open spaces provide homes for plants and animals and nearby nature for people to explore and enjoy.

Along the shore of the San Francisco Bay, we preserve salt marsh wetlands. In turn, they protect us by storing carbon and providing natural flood protection.

We Care for the Land The Land Cares for Us



Midpen preserves open space lands so that plants, animals and people can thrive.

We care for increasingly fragile ecosystems with science and a long-term view. Thousands of different plants and animals — many of which are found only here — rely on these protected places.

In turn, the land provides spaces for the healing power of nature to do its work. The results are tangible. As lands are protected and cared for, they provide clean air and water, local food, resilience to climate change and places where people can connect with nature. All living things, including people, benefit.

Open Space By and for the People



Saving open space in our region has always been about determination, creativity and commitment.

Late 1960s: Where there had once been orchards, ranches and open space, cities and towns grew.

Early 1970s: People agonized, organized and proposed a solution — a publicly funded entity to protect the open spaces that support the health and beauty of our region. In 1972, voters established Midpen.

Today: The work is not over. Thousands of people — voters, visitors, volunteers, staff — continue to protect the essential habitats of our region.

Together, we support Midpen's mission to preserve land, restore nature and provide opportunities for public education and enjoyment of open space.

GL-05.01-300

GL-05.01-200

GL-05.01-100

Scene 05: Topic Panels

CARING FOR COASTAL GRASSLANDS

Rich in native plants and wildlife, California's coastal grasslands evolved over millennia with herds of grazing wildlife and periodic fires that preserved the habitat's open productive qualities.

Today, we have to use other tools to protect this important habitat from encroaching shrubs and trees. Carefully managed conservation grazing is one way we work to enhance this unique community of grasses and wildflowers. Birds, badgers and other grassland-dependent animals benefit.

On the San Mateo County Coast, Midpen's mission includes protecting agricultural land, preserving rural character and encouraging viable agricultural land use.

Northern harrier hawks are often seen gliding low over open grasslands. They use their hearing more than their eyesight to detect prey.



GL-05.02-500

RESTORING OUR WOODS, WATERSHEDS & FORESTS

Life-rich habitats define our region. Fog-drenched forests with towering redwoods. Tumbling streams with steelhead trout and salamanders. Oak woodlands with California quail, lupines and poppies, and chaparral with fire-adapted manzanita and sticky monkey flower.

Our projects are as varied as the landscape. Improving forest health for wildlife and to make our region more resilient to fire and climate change. Restoring ponds and creeks for frogs, fish and people downstream. Protecting wildlife corridors to allow wide-ranging wildlife room to roam.

Gray foxes are the only fox native to California. They can climb trees in pursuit of food.



GL-05.02-400

INDIGENOUS LANDS & TRIBAL PARTNERS

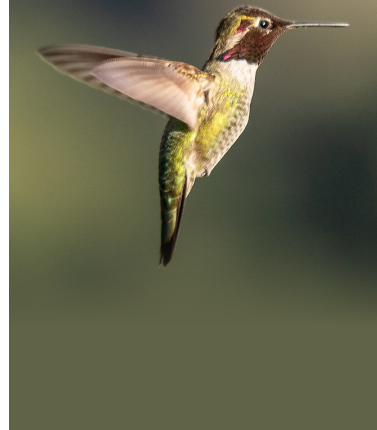
True wealth is the ability to carry indigenous knowledge forward to provide for all people, animals, plants, Mother Earth, wind, water and shadows.

— Valentin Lopez, Chair of the Amah Mutsun Tribal Band, 2021

Native Americans are the original residents and caretakers of these lands. Traditional cultural practices are an integral and honored part of modern tribal life.

Midpen partners with local tribes in many ways. There are projects to restore native plants, practice traditional knowledge and methods — like prescribed burns for ecological health, and provide space for ceremonial gatherings.

"Umunhuni" means "resting place of the hummingbird" in the Mutsun language.



GL-05.02-300

PROTECTING OUR BAYLANDS

Saltwater surrounding cord grasses. Raucous shorebird calls. Cooling breezes. Teeming with life, these are our region's baylands. Their secret superpower is carbon storage.

Midpen works to preserve baylands by protecting this watery habitat from development and restoring its web of life. The entire San Francisco Bay used to be surrounded by shallow salt marshes. Today, only about 35 percent remain.

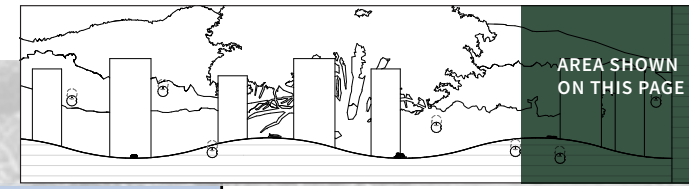
Why do these places matter? They help restore our climate, provide homes to unique plants and animals and give us places to spend time in nature.



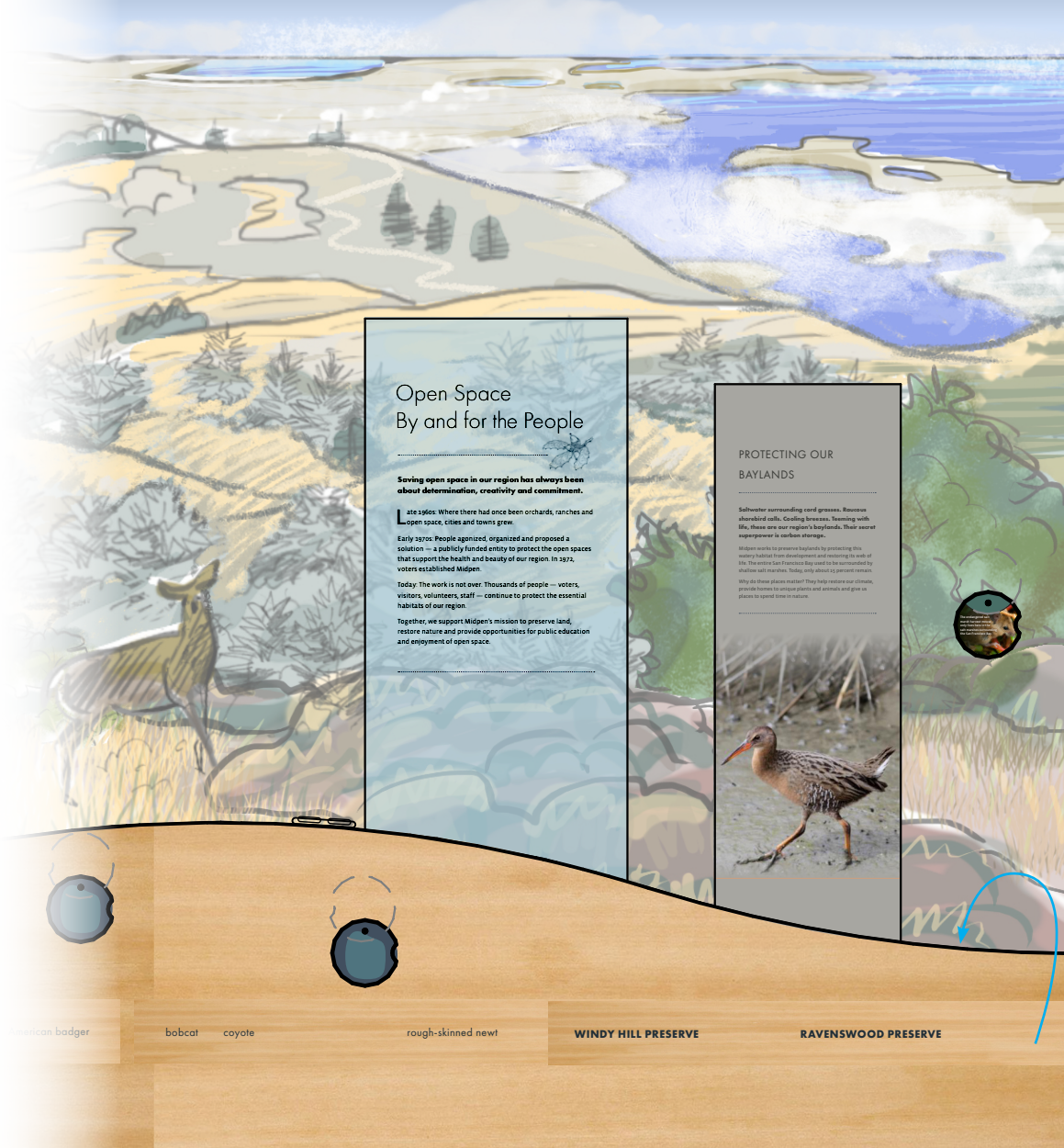
GL-05.02-100



Scene 05: Atrium Exhibit Wall



AREA SHOWN ON THIS PAGE



Open Space By and for the People

Saving open space in our region has always been about determination, creativity and commitment.

At 1965: Where there had once been orchards, ranches and open space, cities and towns grew.

Early 1970s: People agonized, organized and proposed a solution — a publicly funded entity to protect the open space that support the health and beauty of our region. In 1974, voters established Midpen.

Today: The work is not over. Thousands of people — voters, visitors, volunteers, staff — continue to protect the essential habitats of our region.

Together, we support Midpen's mission to preserve land, restore nature and provide opportunities for public education and enjoyment of open space.

PROTECTING OUR BAYLANDS

Saltwater surrounding cord grasses. Recover thousands of acres. Creating bird sanctuaries. Restoring wetlands. These are our region's baylands. Their secret superpower is carbon storage.

Midpen is here to protect baylands by protecting their natural habitat from development and restoring the web of life. The entire San Francisco Bay watershed is threatened by shallow salt marshes. Today, only about 50 percent remain. Why do these places matter? They help restore our climate, provide homes to native plants and animals and give us places to spend time in nature.

CE-05.05-100
Tactile
Bobcat, coyote tracks

CE-05-03-400
Discovery in Redwood face
rough-skinned newt

GL-05-03-050
Salt marsh harvest mouse reveal
6" circle

GL-05-04-100 & 200
Ribbon Panels
6"h x 49.625"l
redwood base

GL-05.01-100
Main Panel: Midpen's history
24"w x 76"h

GL-05.02-100
Topic panel: Preserving Our Baylands
17"w x 70"

Scene 05: Graphic Panels

Open Space By and for the People



Saving open space in our region has always been about determination, creativity and commitment.

Late 1960s: Where there had once been orchards, ranches and open space, cities and towns grew.

Early 1970s: People agonized, organized and proposed a solution — a publicly funded entity to protect the open spaces that support the health and beauty of our region. In 1972, voters established Midpen.

Today: The work is not over. Thousands of people — voters, visitors, volunteers, staff — continue to protect the essential habitats of our region.

Together, we support Midpen’s mission to preserve land, restore nature and provide opportunities for public education and enjoyment of open space.



Enlarged to show coast live oak acorn illustration

GL-05.01-100 cropped to show text
Size: 24”w x 76”h
shown 20% of actual size

Text details: 105 words, 37% reading ease, 12th grade reading level

Scene 05: Graphic Panels

PROTECTING OUR
BAYLANDS

Saltwater surrounding cord grasses. Raucous shorebird calls. Cooling breezes. Teeming with life, these are our region's baylands. Their secret superpower is carbon storage.

Midpen works to preserve baylands by protecting this watery habitat from development and restoring its web of life. The entire San Francisco Bay used to be surrounded by shallow salt marshes. Today, only about 15 percent remain.

Why do these places matter? They help restore our climate, provide homes to unique plants and animals and give us places to spend time in nature.



10% of actual size

PROTECTING OUR BAYLANDS

Saltwater surrounding cord grasses. Raucous shorebird calls. Cooling breezes. Teeming with life, these are our region's baylands. Their secret superpower is carbon storage.

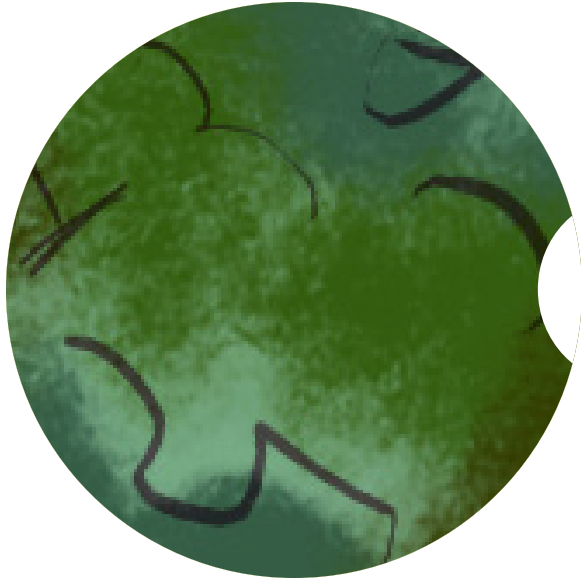
Midpen works to preserve baylands by protecting this watery habitat from development and restoring its web of life. The entire San Francisco Bay used to be surrounded by shallow salt marshes. Today, only about 15 percent remain.

Why do these places matter? They help restore our climate, provide homes to unique plants and animals and give us places to spend time in nature.

GL-05.02-100 cropped to show text
Size: 17" w x 70" h
shown 30% of actual size

Text details: 86 words, 61% reading ease,
7th grade reading

Scene 05: Reveal Panels

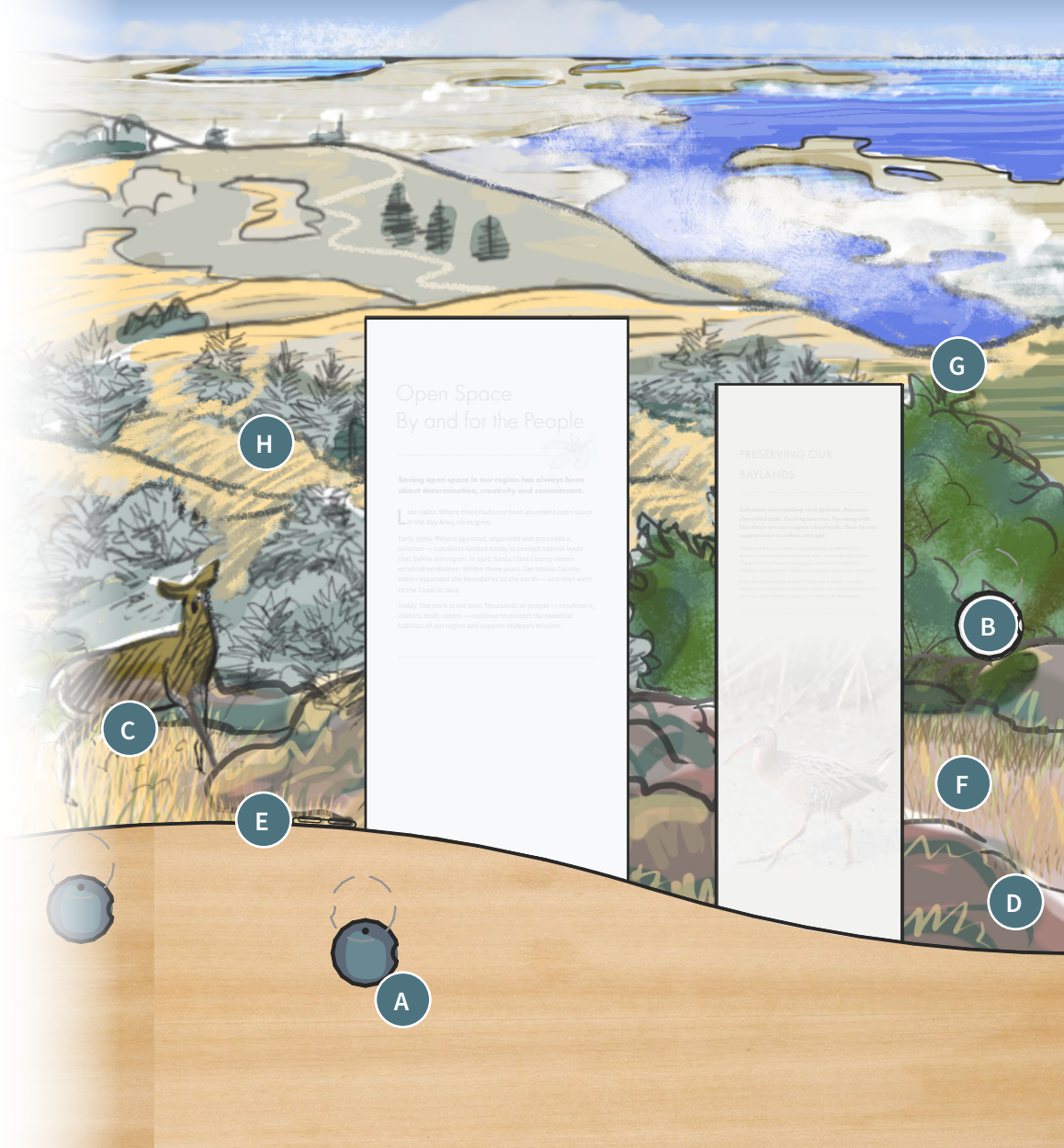
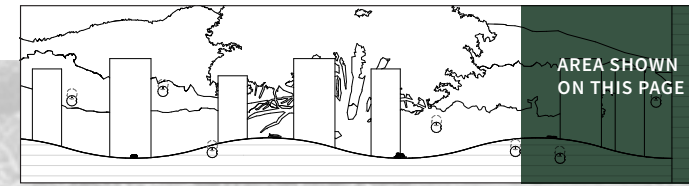


GL-05-03-025 Discovery in mural
 Size: 6" circle
 Scale: 50%



GL-05-03-050 Reveal
 Size: 6" circle
 Scale 100%

Exhibit Wall Elements



Key	Species
A	Rough-skinned newt (tactile)
B	Salt marsh harvest mouse (reveal panel)
C	Black-tailed deer, buck
D	Grassland flowers: Common fiddleneck, Yellow mariposa, Ruby chalice clarkia, Douglas Iris
E	Bobcat and coyote tracks (tactile)
F	California quail, covey with adults and young
G	Spotted towhee, singing
H	Background foliage: Pearly everlasting, Sticky monkeyflower, Flowering currant, California buckeye

Reference Images



Common fiddleneck



Yellow mariposa



Black-tailed deer

California quail



Rough-skinned newt



Spotted Towhee

Reference Images



Flowering currant



Pearly everlasting



Ruby chalice clarkia



California buckeye



Sticky monkeyflower



Douglas iris

Scene 05: Atrium Exhibit Wall



INDIGENOUS LANDS & TRIBAL PARTNERS

True wealth is the ability to carry indigenous knowledge forward to provide for all people, animals, plants, Mother Earth, wind, water and shadows.

—Valentin Lopez, Chief of the Amah Meeanee Tribal Band, 2015

Native Americans are the original residents and caretakers of these lands. Traditional cultural practices are an integral and honored part of modern tribal life.

All ages partners with local tribes in many ways. There are projects to restore native plants, practice traditional knowledge and methods, to use prescribed burns for ecological health, and provide space for ceremonial gatherings.

"Small leaf" means "young plant of the homeground" in the Amah Meeanee language.



CE-05.05-200
Tactile
Acorns and grinding stone

GL-05-03-250
Discovery Panel Reveal
Mountain lion
6" circle

CE-05-03-500
Discovery in Redwood face
American badger

SKYLINE RIDGE PRESERVE

Native American grinding stone

black oak acorns

LONG RIDGE PRESERVE

American badger

bobcat

GL-05-04-300 & 400
Ribbon Panels
6"h x 49.625"l

GL-05.02-300
Topic Panel: Indigenous Lands & Tribal Partners
17"w x 66" or 70"

Scene 05: Graphic Panels

INDIGENOUS LANDS & TRIBAL PARTNERS

True wealth is the ability to carry indigenous knowledge forward to provide for all people, animals, plants, Mother Earth, wind, water and shadows.

— Valentin Lopez, Chair of the Amah Mutsun Tribal Band, 2021

Native Americans are the original residents and caretakers of these lands. Traditional cultural practices are an integral and honored part of modern tribal life.

Midpen partners with local tribes in many ways. There are projects to restore native plants, practice traditional knowledge and methods — like prescribed burns for ecological health, and provide space for ceremonial gatherings.

“Umunhum” means “resting place of the hummingbird” in the Mutsun language.



10% of actual size

INDIGENOUS LANDS & TRIBAL PARTNERS

True wealth is the ability to carry indigenous knowledge forward to provide for all people, animals, plants, Mother Earth, wind, water and shadows.

— Valentin Lopez, Chair of the Amah Mutsun Tribal Band, 2021

Native Americans are the original residents and caretakers of these lands. Traditional cultural practices are an integral and honored part of modern tribal life.

Midpen partners with local tribes in many ways. There are projects to restore native plants, practice traditional knowledge and methods — like prescribed burns for ecological health, and provide space for ceremonial gatherings.

“Umunhum” means “resting place of the hummingbird” in the Mutsun language.

GL-05.02-300 cropped to show text

Size: 17”w x 70”h

shown 30% of actual size

Text details: 101 words, 39% reading ease, 11th grade reading level

Scene 05: Reveal Panels

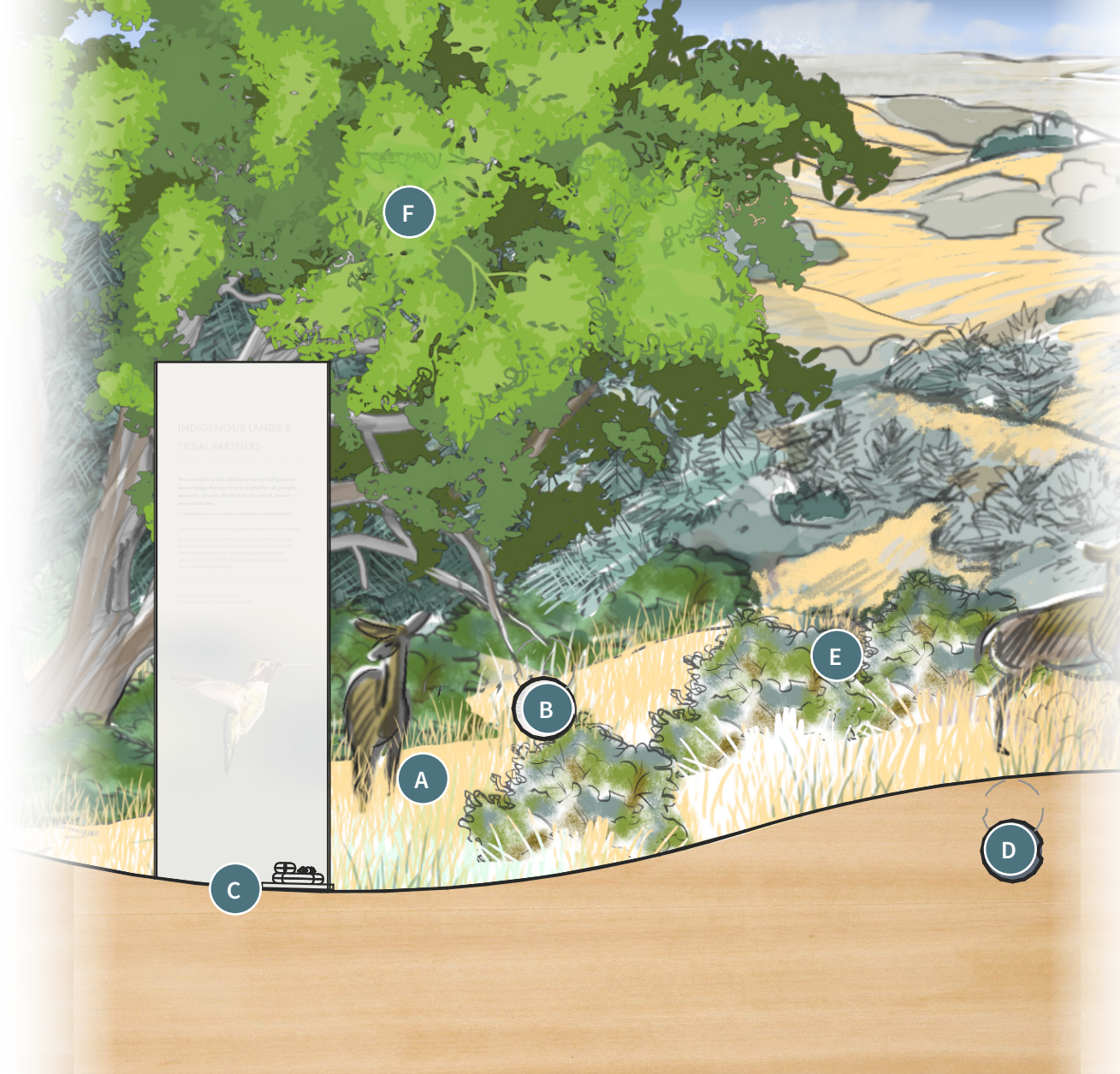


GL-05-03-100 Discovery in mural
Size: 6" circle
Scale: 50%



GL-05-03-150 Reveal
Size: 6" circle
Scale 100%

Exhibit Wall Elements



Key	Species
A	Black-tailed deer, doe and fawn
B	Mountain lion (reveal panel)
C	Grinding stone and California black oak acorns (tactile)
D	American badger (discovery reveal)
E	Background foliage: Blue-blossom ceanothus, King's mountain manzanita
F	Central tree: Coast live oak

Reference Images



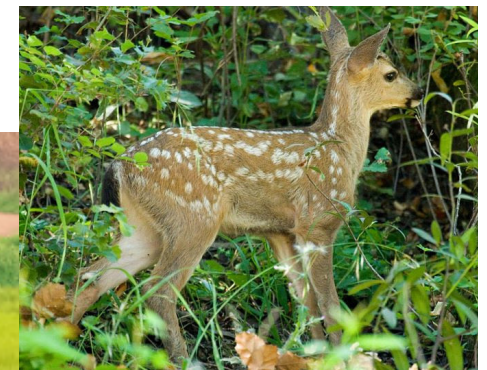
Blue-blossom ceanothus



American badger



King's mountain manzanita

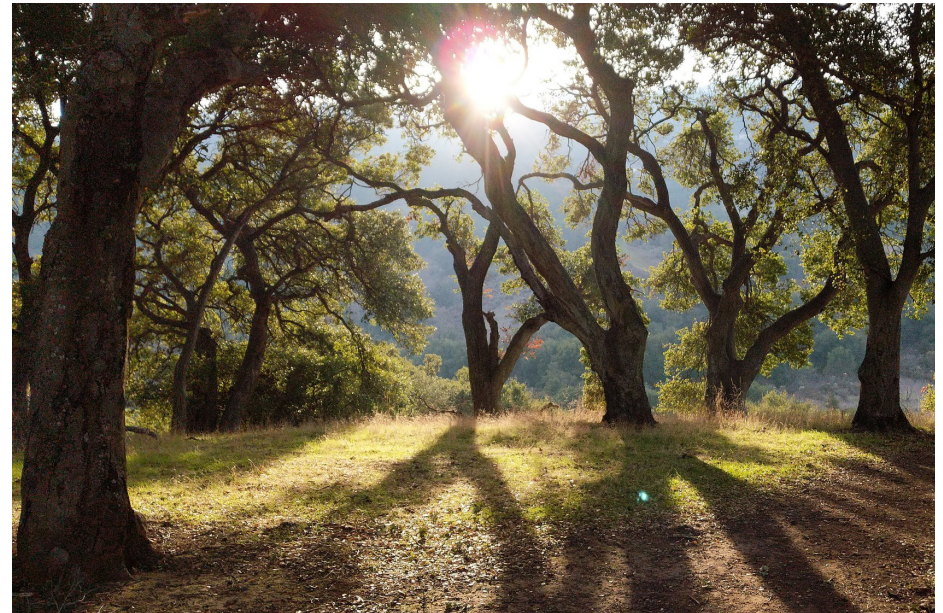
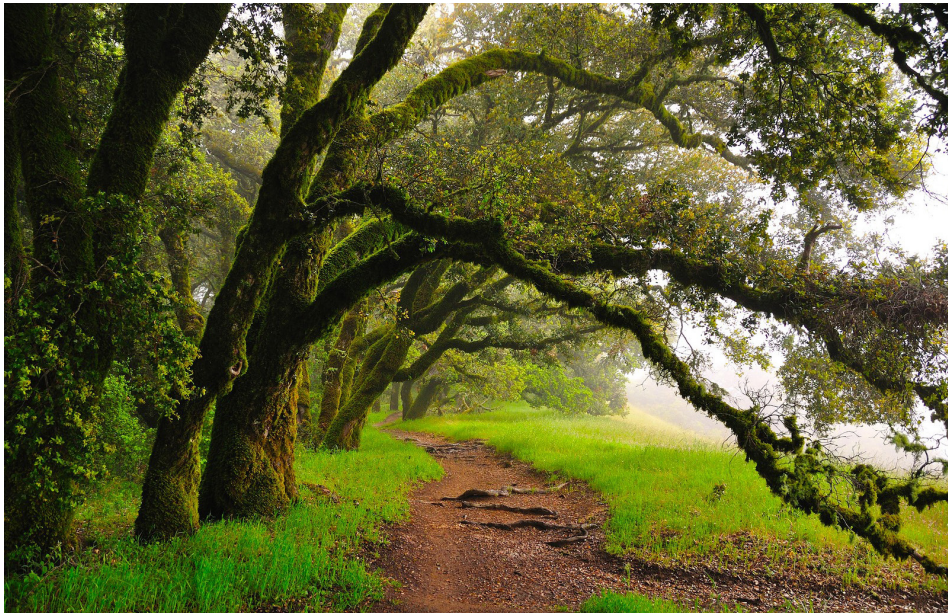


Black-tailed deer, doe and fawn

Reference Images

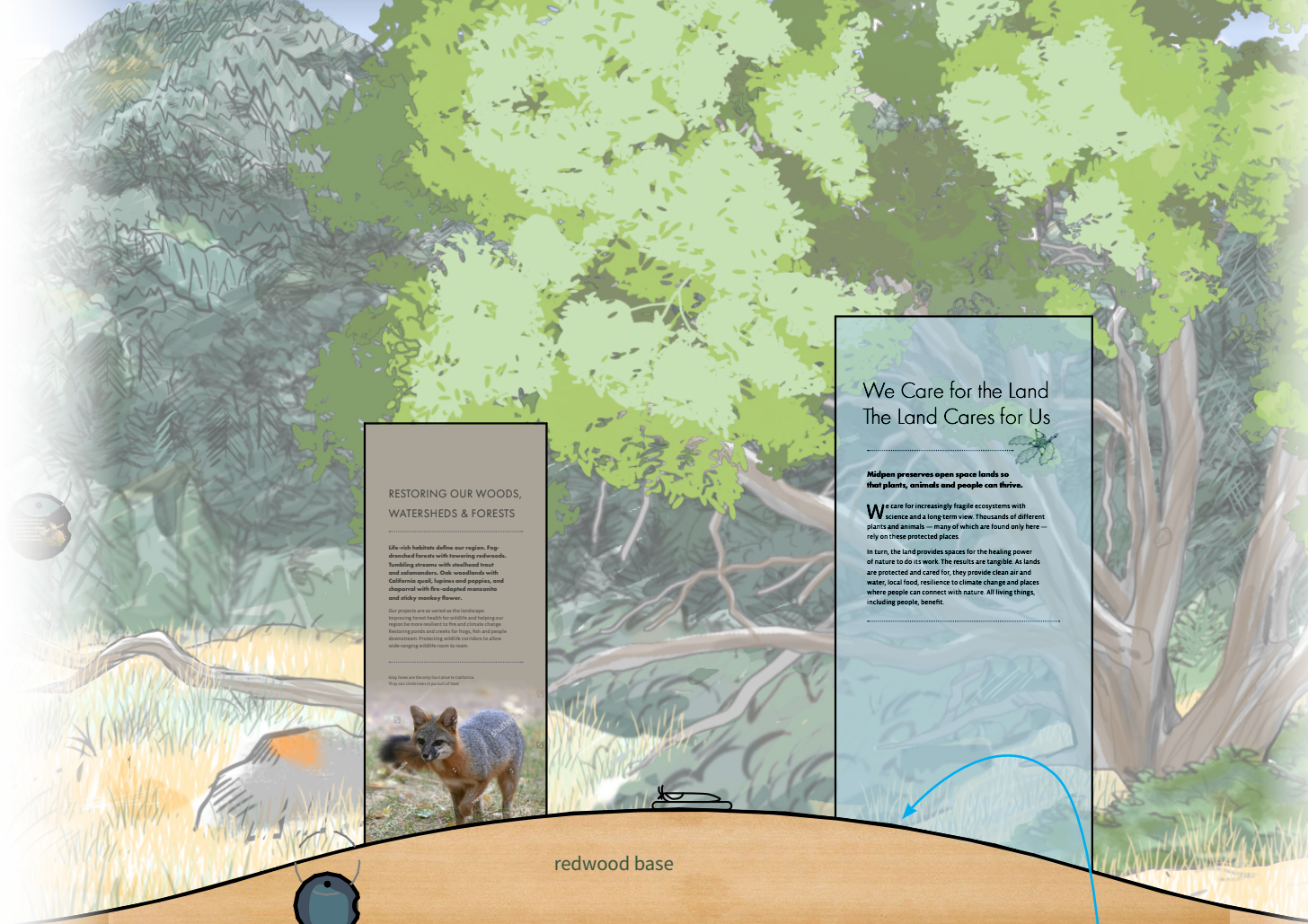
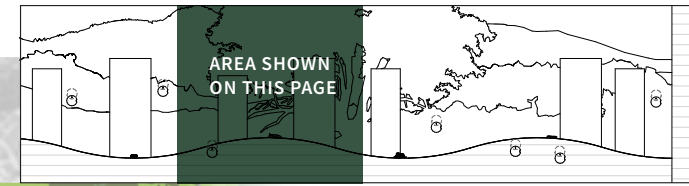


Left: Black oak acorns
Right, below: Coast live oak





Scene 05: Atrium Exhibit Wall



RESTORING OUR WOODS, WATERSHEDS & FORESTS

Life-rich habitats define our region. Fog-drenched forests with towering redwoods. Bunching streams with steelhead trout and salmonides. Oak woodlands with California quail, lupines and poppies, and chaparral with the red-tipped manzanita and sticky monkey flower.

Our projects are as varied as the landscape: improving forest health for wildlife and hiking our region for more resilient to fire and climate change. Restoring ponds and creeks for frogs, fish, and greater decomposition. Providing wildlife corridors to allow and managing quality water to rivers.

Along streams and the sky, this is our California. We can do it better. In part of fact.



**We Care for the Land
The Land Cares for Us**

Midpen preserves open space lands so that plants, animals and people can thrive.

When we care for increasingly fragile ecosystems with science and a long-term view. Thousands of different plants and animals — many of which are found only here — rely on these protected places.

In turn, the land provides spaces for the healing power of nature to do its work. The results are tangible: As lands are protected and cared for, they provide clean air and water, local food, resilience to climate change and places where people can connect with nature. All living things, including people, benefit.

CE-05.05-300
Tactile
Banana slug

CE-05.03-600
Discovery in redwood face
Burrowing owl

RUSSIAN RIDGE PRESERVE

burrowing owl

banana slug

EL CORTE DE MADERA CREEK PRESERVE

SKYLINE RIDGE PRESERVE

GL-05-04-500 & 600
Ribbon Panels
6”h x 49.625”l

GL-05.02-400
Topic Panel: Restoring Woods, Watersheds & Forests
17”w x 66” or 70”

GL-05.01-200
Main Panel: We Care for the Land
24”w x 76”h



Scene 05: Graphic Panels

We Care for the Land The Land Cares for Us



Midpen preserves open space lands so that plants, animals and people can thrive.

We care for increasingly fragile ecosystems with science and a long-term view. Thousands of different plants and animals — many of which are found only here — rely on these protected places.

In turn, the land provides spaces for the healing power of nature to do its work. The results are tangible. As lands are protected and cared for, they provide clean air and water, local food, resilience to climate change and places where people can connect with nature. All living things, including people, benefit.

GL-05.01-200 cropped to show text
Size: 24”w x 76”h
shown 20% of actual size

Text details: 94 words, 65% reading ease, 7th grade reading level

Scene 05: Graphic Panels

RESTORING OUR WOODS, WATERSHEDS & FORESTS

Life-rich habitats define our region. Fog-drenched forests with towering redwoods. Tumbling streams with steelhead trout and salamanders. Oak woodlands with California quail, lupines and poppies, and chaparral with fire-adapted manzanita and sticky monkey flower.

Our projects are as varied as the landscape. Improving forest health for wildlife and to make our region more resilient to fire and climate change. Restoring ponds and creeks for frogs, fish and people downstream. Protecting wildlife corridors to allow wide-ranging wildlife room to roam.

Gray foxes are the only fox native to California. They can climb trees in pursuit of food.



10% of actual size

RESTORING OUR WOODS, WATERSHEDS & FORESTS

Life-rich habitats define our region. Fog-drenched forests with towering redwoods. Tumbling streams with steelhead trout and salamanders. Oak woodlands with California quail, lupines and poppies, and chaparral with fire-adapted manzanita and sticky monkey flower.

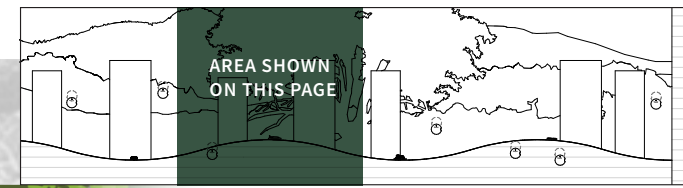
Our projects are as varied as the landscape. Improving forest health for wildlife and to make our region more resilient to fire and climate change. Restoring ponds and creeks for frogs, fish and people downstream. Protecting wildlife corridors to allow wide-ranging wildlife room to roam.

Gray foxes are the only fox native to California. They can climb trees in pursuit of food.

GL-05.02-400 cropped to show text
Size: 17" w x 66" h
shown 30% of actual size

Text details: 79 words, 50% reading ease (lots of specific names), 9th grade reading level

Exhibit Wall Elements



**RESTORING OUR WOODS,
WATERSHEDS & FORESTS**

Habitats full of life flourish over regions. 2004
rains restored forests, flooding streams with
sediment that choked out salmonids.
Over a decade, with the national movement
and state funding, we began to restore.

Our work has been to restore the health of
ecosystems that provide everything from clean
water to the wildlife that depend on it. We're
working to restore the natural world to a
healthy, resilient state.

**We Care for the Land
The Land Cares for Us**

Midpen protects natural open spaces so
that plants, animals and people can thrive.

We care for increasingly fragile ecosystems, informed
by science and with a long-term view. Thousands of
different plants and animals, many of which are only found
here, flourish today because of these protected places.

In turn, the land provides spaces for the healing power of
nature to do its work. The results are tangible. As lands are
protected, restored and cared for, they provide cleaner air
and water, as well as resilience to fire, drought and floods.
All living things, including people, benefit.

Key Species

A	Banana slug (tactile)
B	Burrowing owl (discovery reveal)
C	Pacific poison oak
D	Foreground shrubs: Coffeeberry, coyote bush
E	Foreground grasses: Blue wild rye
F	Red-shafted northern flicker
G	Western fence lizard, on rock

Reference Images



Blue wild rye



Coffeeberry



Coyote bush



Banana slug

Reference Images



Pacific poison oak



Burrowing owl

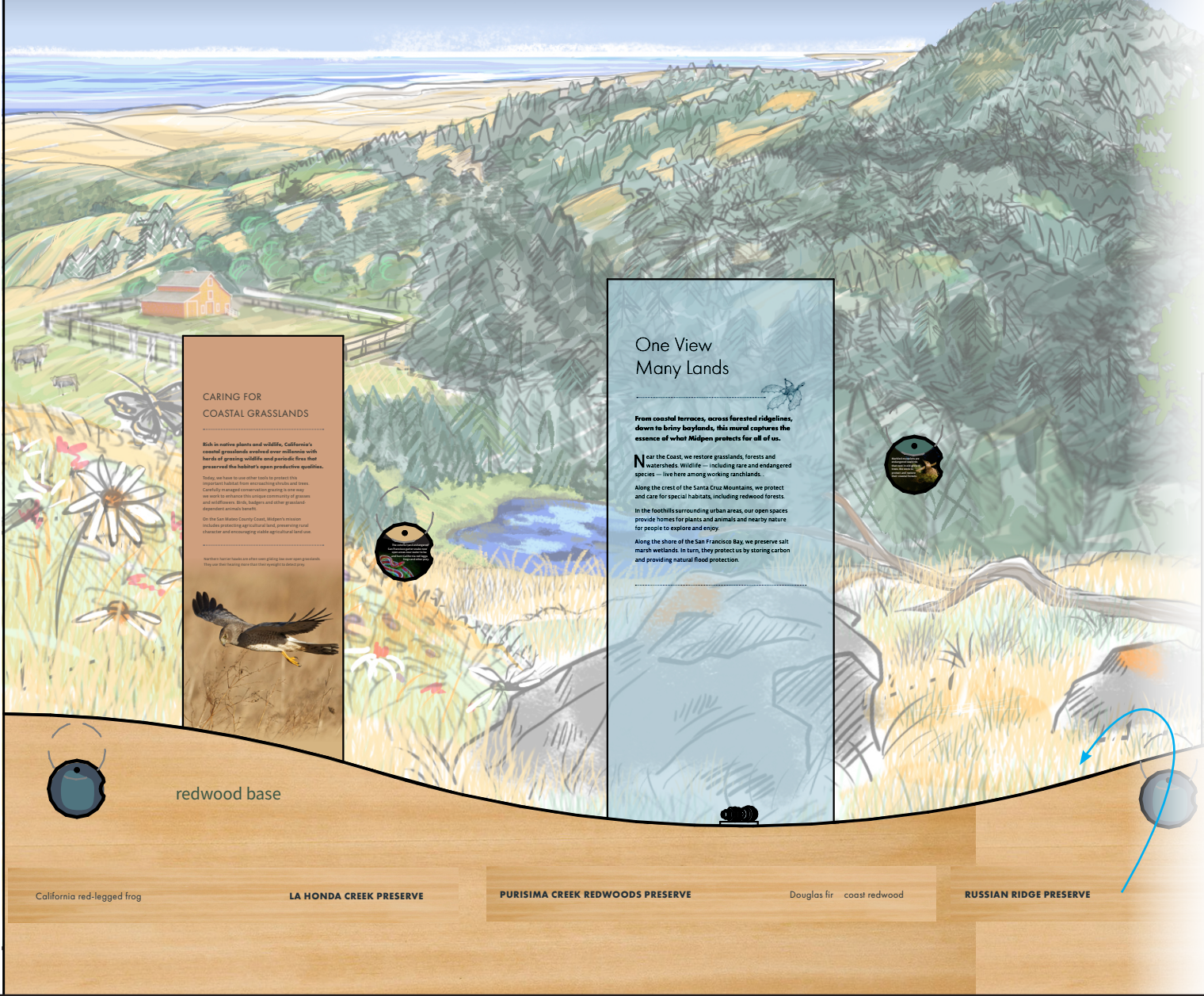
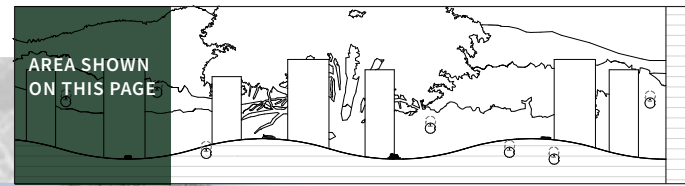


Western fence lizard



Red-shafted northern flicker

Scene 05: Atrium Exhibit Wall



CARING FOR COASTAL GRASSLANDS

Rich in native plants and wildlife, California's coastal grasslands evolved over millennia with herds of grazing wildlife and periodic fires that preserved the habitat's open productive qualities.

Today, we have to use other tools to protect this important habitat from encroaching forests and trees. Carefully managed conservation grazing is one way we work to restore this unique ecosystem of grasses and wildflowers. Birds, badgers and other grassland-dependent animals benefit.

On the San Mateo County Coast, Midpen's mission includes protecting agricultural land, preserving rural character and encouraging public appreciation of our land.

Not these former fields are often seen giving the best open grasslands. They are the leading force that their strength to do so.

One View Many Lands

From coastal terraces, across forested ridgelines, down to briny baylands, this mural captures the essence of what Midpen protects for all of us.

Near the Coast, we restore grasslands, forests and watersheds. Wildlife — including rare and endangered species — live here among working ranchlands.

Along the crest of the Santa Cruz Mountains, we protect and care for special habitats, including redwood forests.

In the foothills surrounding urban areas, our open spaces provide homes for plants and animals and nearby nature for people to explore and enjoy.

Along the shore of the San Francisco Bay, we preserve salt marsh wetlands. In turn, they protect us by storing carbon and providing natural flood protection.

GL-05-03-350
Discovery Panel Reveal
San Francisco garter snake
6" circle

GL-05-03-250
Discovery Panel Reveal
Marbled murrelet
6" circle

CE-05-03-700
Discovery in Redwood face
California red-legged frog

CE-05.05-400
Tactile
Redwood/Douglas fir cones

GL-05-04-700 & 800
Ribbon Panels
6"h x 49.625"l

California red-legged frog

LA HONDA CREEK PRESERVE

PURISIMA CREEK REDWOODS PRESERVE

Douglas fir coast redwood

RUSSIAN RIDGE PRESERVE

GL-05.02-500
Topic Panel : Protecting Coastal Grasslands
24"w x 76"h

GL-05.01-300
Main Panel: One View, Many Lands
17"w x 66" or 70"

Scene 05: Graphic Panels

One View Many Lands



From coastal terraces, across forested ridgelines, down to briny baylands, this mural captures the essence of what Midpen protects for all of us.

Near the Coast, we restore grasslands, forests and watersheds. Wildlife — including rare and endangered species — live here among working ranchlands.

Along the crest of the Santa Cruz Mountains, we protect and care for special habitats, like redwood forests.

In the foothills surrounding urban areas, our open spaces provide homes for plants and animals and nearby nature for people to explore and enjoy.

Along the shore of the San Francisco Bay, we preserve salt marsh wetlands. In turn, they protect us by storing carbon and providing natural flood protection.

GL-05.01-300 cropped to show text
Size: 24”w x 76”h
shown 20% of actual size

Text details: 111 words, 58% reading ease,
9th grade reading level

Scene 05: Graphic Panels

CARING FOR COASTAL GRASSLANDS

Rich in native plants and wildlife, California's coastal grasslands evolved over millennia with herds of grazing wildlife and periodic fires that preserved the habitat's open productive qualities.

Today, we have to use other tools to protect this important habitat from encroaching shrubs and trees. Carefully managed conservation grazing is one way we work to enhance this unique community of grasses and wildflowers. Birds, badgers and other grassland-dependent animals benefit.

On the San Mateo County Coast, Midpen's mission includes protecting agricultural land, preserving rural character and encouraging viable agricultural land use.

Northern harrier hawks are often seen gliding low over open grasslands. They use their hearing more than their eyesight to detect prey.



10% of actual size

CARING FOR COASTAL GRASSLANDS

Rich in native plants and wildlife, California's coastal grasslands evolved over millennia with herds of grazing wildlife and periodic fires that preserved the habitat's open productive qualities.

Today, we have to use other tools to protect this important habitat from encroaching shrubs and trees. Carefully managed conservation grazing is one way we work to enhance this unique community of grasses and wildflowers. Birds, badgers and other grassland-dependent animals benefit.

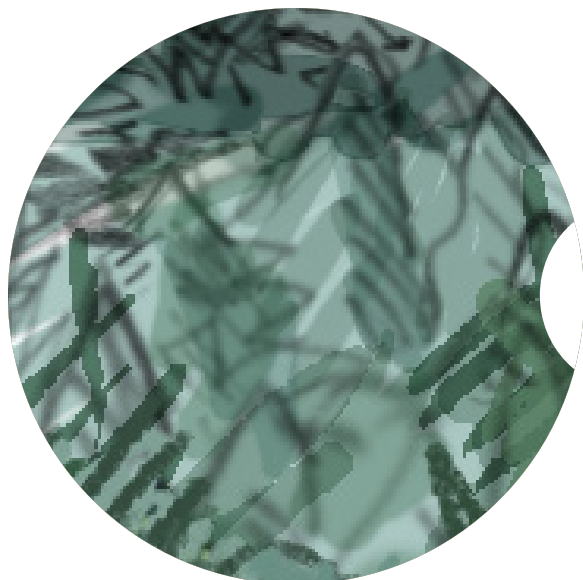
On the San Mateo County Coast, Midpen's mission includes protecting agricultural land, preserving rural character and encouraging viable agricultural land use.

Northern harrier hawks are often seen gliding low over open grasslands. They use their hearing more than their eyesight to detect prey.

GL-05.02-500 cropped to show text
Size: 17" w x 70" h
shown 30% of actual size

Text details: 92 words, 26% reading ease,
12th grade reading level

Scene 05: Reveal Panels



GL-05-03-200 Discovery in mural
Size: 6" circle
Scale: 50%



GL-05-03-250 Reveal
Size: 6" circle
Scale 100%

Scene 05: Reveal Panels

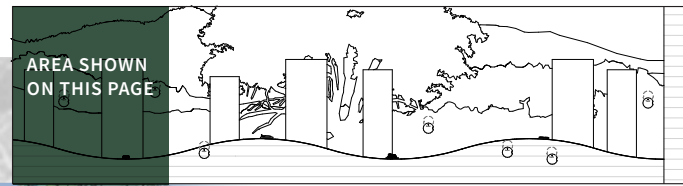


GL-05-03-300 Discovery in mural
Size: 6" circle
Scale: 50%



GL-05-03-350 Reveal
Size: 6" circle
Scale 100%

Exhibit Wall Elements



Key	Species
A	California red-legged frog (discovery reveal)
B	San Francisco garter snake (reveal panel)
C	Marbled murrelet (reveal panel)
D	Silvery blue butterfly or Acmon blue butterfly
E	Wildflowers: summer lupine, variably colored lupine, silver lupine, common yarrow, blue-eyed grass
F	Grasses: California oatgrass, blue wild rye
G	Background shrubs: Mock heather
H	Western Meadowlark, singing in grass

Reference Images



Silvery blue butterfly



Acmon blue butterfly



Mock heather



California oatgrass

Reference Images



Western meadowlark



California red-legged frog



Blue-eyed grass

Silver lupine



Summer lupine



Varied lupine

