



Midpeninsula Regional
Open Space District

LEGISLATIVE, FUNDING, AND PUBLIC AFFAIRS COMMITTEE

R-22-08
January 18, 2022

AGENDA ITEM 2

AGENDA ITEM

Proposed Trail Name for Lower La Honda Creek Open Space Preserve Loop Trail

GENERAL MANAGER'S RECOMMENDATION

Forward a recommendation to the full Board of Directors for their review and consideration of the proposed trail name "Grasshopper Loop Trail" for the former Sears Ranch Road loop trail located in lower La Honda Creek Open Space Preserve.

SUMMARY

In preparation for the summer 2022 public opening of the newly constructed loop trail in lower La Honda Creek Open Space Preserve (Preserve), the General Manager recommends the Legislative, Funding, and Public Affairs Committee (LFPAC) forward a recommendation to the full Board of Directors (Board) for the proposed trail name "Grasshopper Loop Trail." The proposed trail name is consistent with the naming criteria and process specified in Board Policy 5.01 for *Site Naming, Gift, and Special Recognition*. Pending Board approval, the trail name would be implemented through new trail signs and maps.

DISCUSSION

In accordance with the La Honda Creek Open Space Preserve Master Plan (Master Plan) Phase II Trail Improvements, the Land and Facilities Department completed construction of the lower loop trail in summer 2021. The trail originates at the Sears Ranch Road Parking Area and connects to the Harrington Creek Trail, forming a 1.9-mile loop through grassland and redwood forest ecosystems (Attachment 1). In preparation for the trail's opening to the public in the summer of 2022, the recommended trail name and two alternative names are presented for the LFPAC's review and consideration.

Per Board Policy 5.01 for *Site Naming, Gift, and Special Recognition* (Attachment 2), Preserve trails shall ordinarily be named after: a) geographical, botanical, or zoological identification, or b) historical persons, uses, or events associated with the site. The "Grasshopper Loop Trail" is proposed due to its two-fold alignment with Board Policy 5.01. Firstly, the name alludes to the ecological transitions trail users experience as they traverse the trail, hopping from grassland to forest to grassland. Secondly, the name celebrates the Preserve's ecology, paying homage to two grassland-dwelling animals: grasshoppers and grasshopper sparrows (*Ammodramus savannarum*). Notably, the grasshopper sparrow is listed as a California Species of Special Concern by the California Department of Fish and Wildlife. Accordingly, this trail name presents an opportunity to garner public awareness for the conservation of this declining species, as well

as the broader ecological dynamics of California grassland ecosystems. Based on its alignment with Board Policy 5.01, its ecological congruence, and its layered meaning, the “Grasshopper Loop Trail” is recommended as the preferred name for the lower loop trail.

In alignment with the District’s trail naming process, two alternative names are presented for the Committee’s consideration. The first alternative, the “Meadowlark Loop Trail” is inspired by the prevalence of western meadowlarks (*Sturnella neglecta*) at the Preserve, while the second alternative, the “Lasso Loop Trail,” signifies the history of ranching and ongoing conservation grazing practices in the San Mateo County coastal region.

FISCAL IMPACT

The trail name addition on new signs and maps is included in the Fiscal Year 2021-22 budget.

BOARD AND COMMITTEE REVIEW

Actions related to this trail previously came before the full Board of Directors at the following public meetings:

- **August 22, 2012:** Board approved the Master Plan and associated Mitigated Negative Declaration and Mitigation Monitoring Program in accordance with the California Environmental Quality Act (CEQA) ([R-12-83](#), [meeting minutes](#))
- **April 11, 2018:** Board approved an award of contract for engineering and design of two new trail loops at La Honda Creek Preserve ([R-18-37](#), [meeting minutes](#))

PUBLIC NOTICE

Public notice was provided as required by the Brown Act. No additional notice is required.

CEQA COMPLIANCE

The selection of a trail name is not a Project as defined by CEQA. The Board previously adopted an Initial Study and Mitigated Negative Declaration for the La Honda Creek Master Plan in August 2012, which analyzed the implementation of the Phase II loop trail.

NEXT STEPS

Following LFPAC consideration, the General Manager will forward the recommended trail name to the full Board of Directors for consideration and approval.

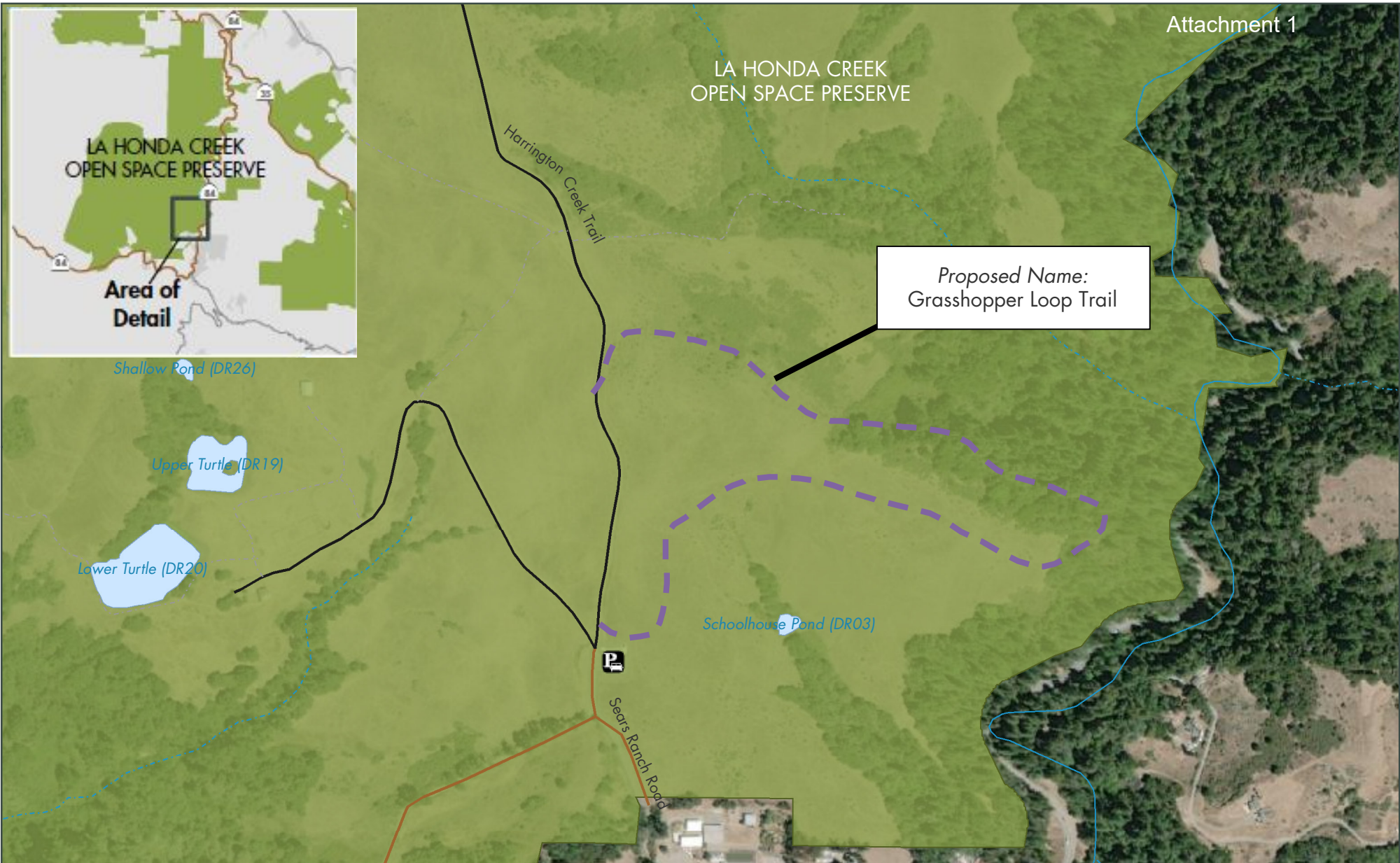
Attachments:

1. Map of Lower La Honda Creek Open Space Preserve Loop Trail
2. Policy 5.01 Site Naming, Gift, and Special Recognition Policy

Responsible Department Head:

Jane Mark, AICP, Planning Department

Prepared by / Contact person/ Graphics prepared by:
Arianna Nuri, Planner I, Planning Department



La Honda Creek Open Space Preserve

- ■ — *Proposed Name: Grasshopper Loop Trail*
- Sears Ranch Road
- Harrington Creek Trail

Midpeninsula Regional
Open Space District
(MROSD)
11/23/2021



Board Policy Manual

Site Naming, Gift, and Special Recognition	Policy 5.01 Chapter 5 – Historical/Cultural
Effective Date: 8/25/93	Revised Date: 11/13/13
Prior Versions: 8/25/93, 9/14/94, 6/24/98, 9/12/01, 10/8/08, 1/13/10, 10/27/10	

I. SITE NAMING

All District site names and signs should be kept as simple and functional as possible. When a property is acquired, either as an addition to an existing preserve or for the establishment of a new preserve, a name will be recommended in the Preliminary Use and Management Plan. In most cases, "open space preserve" is appropriate as part of the name; however, there may be circumstances when another designation may be used. In some cases, a temporary name may be retained until the next Comprehensive Use and Management Plan review.

A. Open Space Preserves

The name given to each open space preserve should be general enough to remain suitable if the site is enlarged, but specific enough to give its location some significance. Properties added to an open space preserve may not always be contiguous with that preserve.

1. Preserves shall be named after:

- a) Geographical features of broad, general significance to the preserve;
- b) Historical persons, cultural names, uses, or events broadly associated with the locale.

2. Preserves shall not be named after any individuals other than historical persons as noted above.

B. Preserve Areas, Trails, Site Improvements, Historic Sites and Unnamed Natural Features

This designation refers to specific locations, land formations, trails, natural and physical features, staging areas and other site improvements, and areas of significance within open space preserves. Recognition of significant land gifts, including "bargain" purchases, will be negotiated at the time of the gift or bargain purchase.

1. Preserve areas, trails, site improvements including benches and bridges, historic sites and previously unnamed natural features shall ordinarily be named after:

- a) Geographical, botanical or zoological identification;

b) Historical persons, uses, or events associated with the site, or persons and organizations listed in Section III: "Special Recognition".

2. Preserve areas, trails, site improvements, historic sites and unnamed natural features may in rare instances be named after a living individual who has made an outstanding contribution to the District, subject to approval by the Board of Directors.

II. GIFT RECOGNITION

The purpose of the gift recognition policy is to provide an opportunity for the District to recognize and commend individuals or groups that have made significant contributions of cash, equipment, materials, goods or professional services toward the enhancement of the District, its programs, and its facilities.

A. Unsolicited Cash Gifts:

Up to \$25	Postcard of thanks
\$26 to \$499	Letter signed by General Manager
\$500 to \$1,999	Letter signed by President of the Board
\$2,000 to \$4,999	Letter signed by President of the Board and District gift item (note cards, etc.)
\$5,000 to \$9,999	Letter signed by President of the Board and framed photograph of favorite District preserve
\$10,000 or more	Letter signed by President of the Board and Resolution and framed photograph of District preserve and mention in a District publication*
*These items will be provided only if desired by the donor.	

III. SPECIAL RECOGNITION

The Legislative, Funding and Public Affairs Committee (LFPAC) shall be the committee designated to discuss all requests that meet the criteria of the policy for special recognition, made by members of the Board of Directors or by members of the public, including bench memorials and the naming of bridges, and after deliberation shall decide which requests will be referred to the full Board for a vote.

The District places benches in its preserves for three distinct purposes:

A. District Rest Benches

These benches provide constituents with a place to rest. District staff places these benches without involving a District committee or the full Board. Regular benches must be either a backed or a backless standard bench as described in Section V below.

B. Constituent Memorial Benches

These are benches which have been requested by constituents in order to honor a member of the public and are funded by the requestors who must pay \$5,000 for the lifetime cost of the bench. LFPAC discusses requests for these benches and decides which requests will be referred to the full Board for a vote. Requests must be in reference to a deceased significant supporter or a volunteer, as defined in the following sections.

a) Constituent memorial benches shall only be placed in locations that have been pre-determined by the District and approved by the Use and Management committee and by the full Board of Directors.

b) If a request for special recognition is approved by the Board of Directors, the requestor(s) shall pay for the cost of constructing, installing and maintaining a memorial bench by contributing \$5,000 to a Memorial Bench Fund to cover the lifetime cost of the bench. The District will put this fund into an interest-bearing account which will be used solely for memorial bench construction, installation, repair, and maintenance.

c) Bench plaques will be 2 x 6 inches in size.

d) Benches must be one of the two District standard bench designs.

C. District Memorial Benches

These are benches which are installed by the District in response to requests by members of the Board of Directors to honor deceased "Founders," "Significant Supporters", and "Volunteers".

a) LFPAC can initiate a bench request and refer a decision to the full Board or individual Board members can initiate a bench request which will be referred to LFPAC for discussion before it is referred to the full Board for a final decision. Honorees must be deceased "Founders", "Significant Supporters", and "Volunteers" (per policy Section III D below).

b) For these benches there are no design specification limits or limits on their location. The District will pay for the lifetime cost of the bench.

D. Deceased Founders, Significant Supporters, and Volunteers

"Founders", "Significant Supporters", and "Volunteers" are eligible for special recognition, including memorials.

"Founders" shall be defined as an individual or group of individuals who participated in the formation of the District, or were significant supporters of the formation of the District.

"Significant Supporters" shall be defined as individuals or group of individuals who have shown conspicuous or noteworthy support for the District through extraordinary contributions of time and effort to the advancement of the goals, philosophy and mission of the District.

"Volunteers" shall be defined as individuals or groups of individuals who donated their time to the District by working for the District's docent or volunteer program.

IV. RECOGNITION OF HISTORIC SITES

A. A recognition monument, normally in plaque form, may be considered by the Board if it is in relation to a specific existing building or other remaining structure of significant historic value. In such cases, the plaque will be affixed or in close proximity to the structure itself. If there is no structure, then recognition may be considered for inclusion on District informational materials or trail signage. Such a site, in the absence of a building or structure, will ordinarily not be physically marked except as determined by the Board on a case-by-case basis as part of the Use and Management planning process for the corresponding open space preserve.

Any Board-approved memorial names shall be included in site brochures, maps, or other informational materials.

V. STANDARD BENCH DESIGN SPECIFICATION

A. District Rest Benches and Constituent Memorial benches, described in III(A) and (B) above, are limited to either of the two following standard bench designs:

Backed bench:

Dumor - Bench 88, recycled plastic slates (color: CEDAR), steel leg supports
(color: BLACK, IMBEDDED)
6' or 8' lengths

Backless bench:

Dumor - Bench 103, recycled plastic slates (color: CEDAR), steel leg supports
(color: BLACK, IMBEDDED)
103-60PL 6' long, 3 supports
103-80PL 8' long, 3 supports

B. LFPAC can at any point bring designs to the Board that differ from the District's standard bench designs.