



Midpeninsula Regional  
Open Space District

R-22-11  
Meeting 22-03  
January 26, 2022

## AGENDA ITEM 5

### AGENDA ITEM

Redistricting Scenario Review and Selection

### GENERAL MANAGER'S RECOMMENDATIONS

Review adjusted redistricting scenario maps and public feedback received, select a preferred scenario, and direct the General Manager to bring the preferred scenario for a public hearing and Board adoption on March 23, 2022.

### SUMMARY

At a public hearing on October 27, 2021, the Midpeninsula Regional Open Space District (District) Board of Directors (Board) reviewed and provided input on three draft redistricting scenario maps. Based on Board direction, staff adjusted Scenario A and Scenario B to improve cohesion of the Kings Mountain community and posted all three final scenarios to the *MyDistricting* online public comment tool for six weeks. Public comments indicate a scenario preference for Scenario A, followed closely by Scenario B. The General Manager recommends the Board select a preferred redistricting scenario map and direct staff to schedule a public hearing on March 23, 2022 to consider adopting a resolution adjusting its ward boundaries to align with the preferred scenario.

### BACKGROUND

The District is required by law to redistrict its seven ward boundaries following each federal decennial census to ensure voting power and representation is distributed equally, based on population size. The 2020 Census illustrates that population growth was uneven throughout the District's communities over the last ten years and the current ward boundaries should be reconsidered to account for changes in population distribution.

Principles of redistricting encourage equalizing populations between wards as far as practicable. Under California law, the difference between the largest population ward and the smallest population ward is required to be within 10% of the size of the "ideal" ward (defined as the District's total population divided by the number of ward seats). Other traditional redistricting principles include avoiding minority vote dilution, ensuring territory is contiguous (not fragmented), compact (not sprawled), and maintaining cohesive neighborhoods and communities of interest.

## DISCUSSION

### Scenario modifications

Using criteria set forth in state and federal law and Board-adopted criteria to guide the redistricting process, staff prepared three draft redistricting scenario maps that were presented to the Board and public for input at a public hearing on October 17, 2021 ([R-21-146](#)). The scenarios are titled: Scenario A (road-centric plan), Scenario B (city-centric plan), and Scenario C (minimal change plan).

Based on Board direction, staff then consulted with Directors Hassett and Kersteen-Tucker to adjust the boundary between Wards 6 and 7 to unite the Kings Mountain community within one ward. To accomplish this, the Ward 6-7 boundary shifted southward to align with CA-84/Woodside Road, I-280, Sand Hill Road, Portola Road, CA-35/Skyline Boulevard, Bear Gulch Road, and CA-84/La Honda Road until it meets the Pacific Ocean at CA-1. A total of 1,646 persons were shifted from Ward 6 to Ward 7, resulting in relatively balanced ward populations of 107,559 (only -1.33% below ideal) and 107,571 (only -1.32% below ideal), respectively. Scenario A and Scenario B were both updated with the described boundary adjustment and have identical Ward 6 and Ward 7 territories. Scenario C remained as-is and did not receive any additional boundary adjustment. Detailed maps of the final scenarios are provided in Attachments 1 through 3.

### Public Feedback

Staff posted all three final scenarios to the *MyDistricting* online public comment tool between October 29 and December 10, 2021 and conducted a robust outreach campaign during the feedback window to encourage public participation, including posting project updates and notifications to the following:

- Local newspaper ads: The Almanac, Half Moon Bay Review, Los Altos Town Crier, Los Gatos Weekly, Mountain View Voice, San Jose Mercury News, San Mateo Daily Journal, Palo Alto Weekly
- Social media posts: Facebook, Twitter, LinkedIn
- eNews write-ups: November and December issues
- Flyers for community event tables
- e-postcard to interested party email lists
- District website

A total of sixteen (16) public comments were received during the feedback window by ten (10) individuals. A report of these public comments is provided in Attachment 4. The table below tallies the individual preference or opposition expressed for each redistricting scenario.

Scenario name	Number of individuals expressing <i>preference</i>	Number of individuals expressing <i>opposition</i>
Scenario A	6	0
Scenario B	2	0
Scenario A <u>or</u> B	1	-
Scenario C	0	8

In summary, the public supports both Scenario A and Scenario B, with a majority preferring Scenario A and no expressed opposition towards Scenario A or Scenario B. Supporters of Scenario A tend to like the plan's simplicity and regional approach to ward configuration. Supporters of Scenario B think that aligning wards to city boundaries make it easier for residents to understand their ward assignment. No member of the public voiced support for Scenario C and most comments expressed strong opposition against this minimal change plan. As such, staff recommends Scenario C to be removed from consideration and for the Board to select either Scenario A or Scenario B to move forward to the public hearing and adoption of the new map.

## **FISCAL IMPACT**

None.

## **BOARD AND COMMITTEE REVIEW**

This project previously came to the Board of Directors at the following public meetings:

- **October 10, 2020:** District staff provided a [memo](#) updating the Board on the consultant selection process, delays to receiving the 2020 Census data, and background on the 2010 redistricting process.
- **August 11, 2021:** District staff and Citygate provided a presentation on the redistricting process and proposed a set of criteria for Board consideration. The Board reviewed and provided feedback on the proposed criteria. ([R-21-23](#), [minutes](#))
- **August 25, 2021:** Board adopted final criteria to guide the redistricting process. ([R-21-115](#), [minutes](#))
- **October 27, 2021:** District staff presented three draft redistricting scenario maps. The Board reviewed and provided feedback, directing staff to modify the Ward 6-7 boundary to unify the Kings Mountain community under one ward and to post final scenarios to the *MyDistricting* online public comment tool. ([R-21-146](#), [minutes](#))

## **PUBLIC NOTICE**

Public notice was provided as required by the Ralph M. Brown Act. Additional notification was also provided to the District Agenda interested party subscribers, individuals who expressed interest in the redistricting process and community organizations.

## **CEQA COMPLIANCE**

This item is not a project subject to the California Environmental Quality Act.

## **NEXT STEPS**

The selected scenario will be presented at a March 23, 2022 public hearing to consider adoption of a final redistricting plan map.

### Attachments

1. Scenario A detailed map
2. Scenario B detailed map

3. Scenario C detailed map
4. Public comments received

Responsible Department Head:

Casey Hiatt, Information Systems & Technology

Prepared by:

Jamie Hawk, GIS Program Administrator, Information Systems & Technology

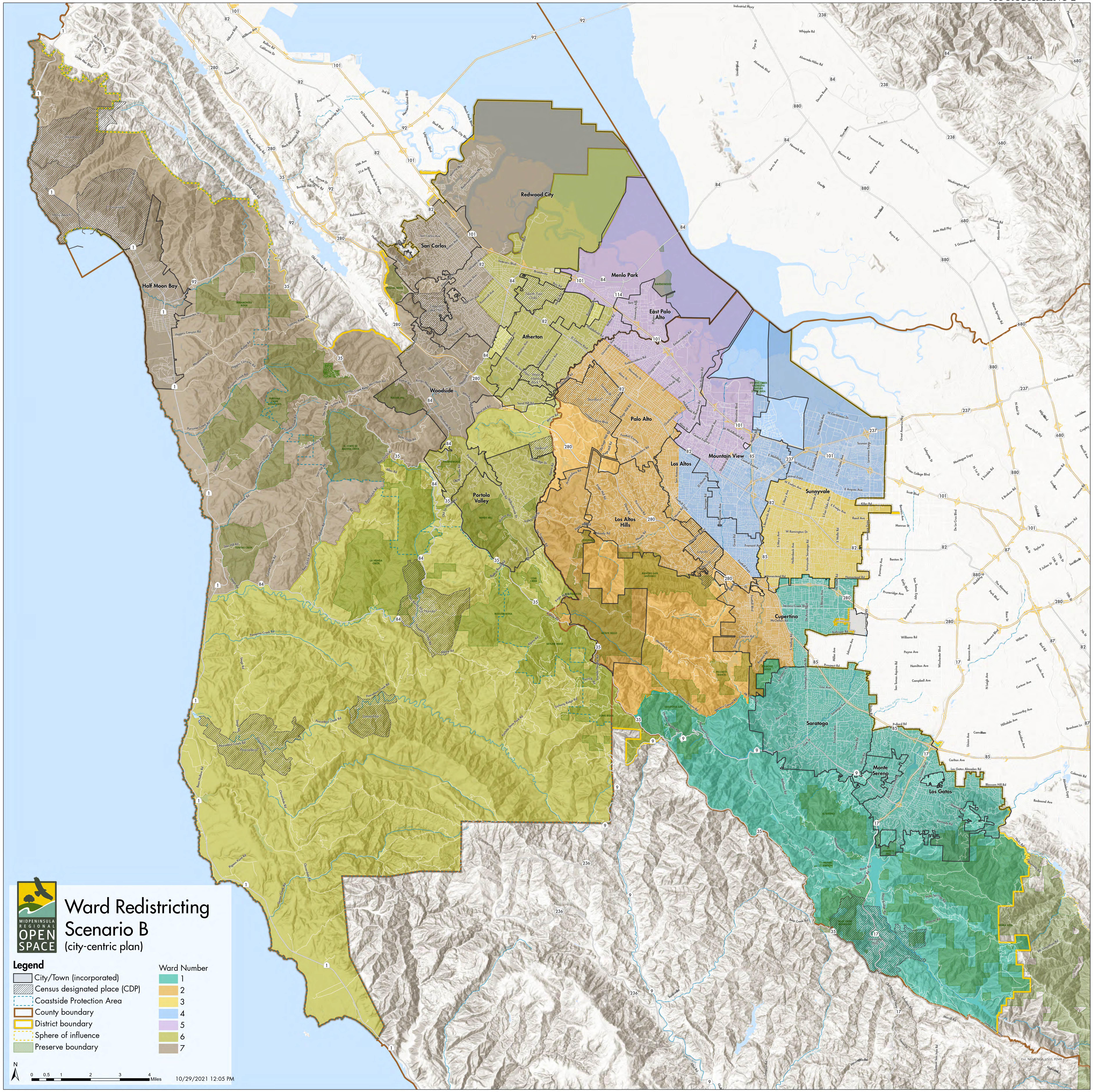




**Ward Redistricting Scenario A**  
(road-centric plan)

Legend		Ward Number	
	City/Town (incorporated)		1
	Census designated place (CDP)		2
	Coastside Protection Area		3
	County boundary		4
	District boundary		5
	Sphere of influence		6
	Preserve boundary		7





**Ward Redistricting Scenario B**  
(city-centric plan)

Legend	
	City/Town (incorporated)
	Census designated place (CDP)
	Coastside Protection Area
	County boundary
	District boundary
	Sphere of influence
	Preserve boundary
	Ward Number 1
	Ward Number 2
	Ward Number 3
	Ward Number 4
	Ward Number 5
	Ward Number 6
	Ward Number 7





**Ward Redistricting Scenario C**  
(minimal change plan)

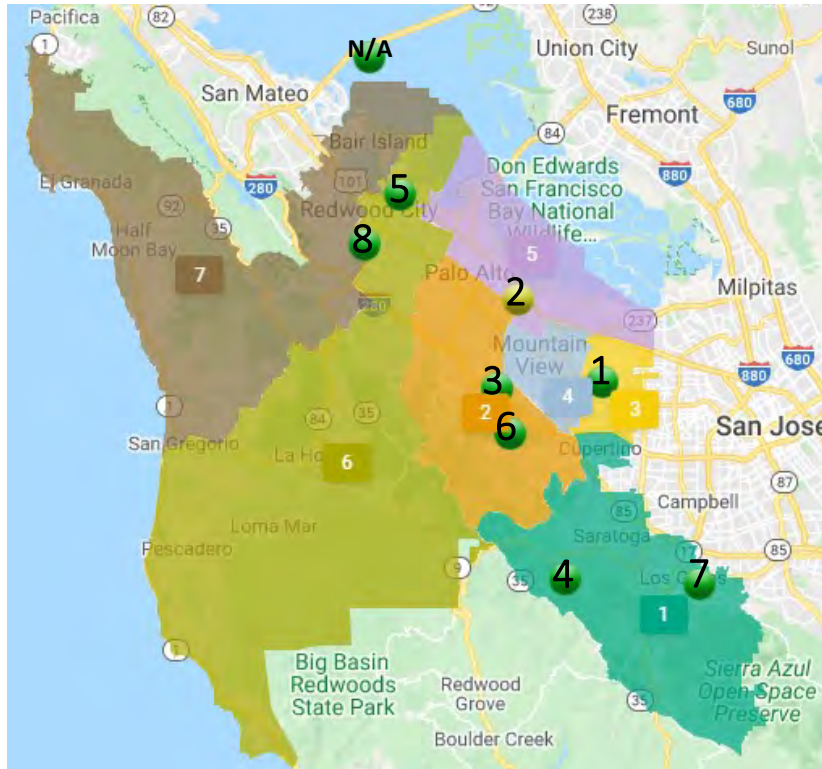
Legend		Ward Number	
	City/Town (incorporated)		1
	Census designated place (CDP)		2
	Coastside Protection Area		3
	County boundary		4
	District boundary		5
	Sphere of influence		6
	Preserve boundary		7



# Public Comments

All public comments received through the MyDistricting app between 10/29/2021 and 12/10/2021

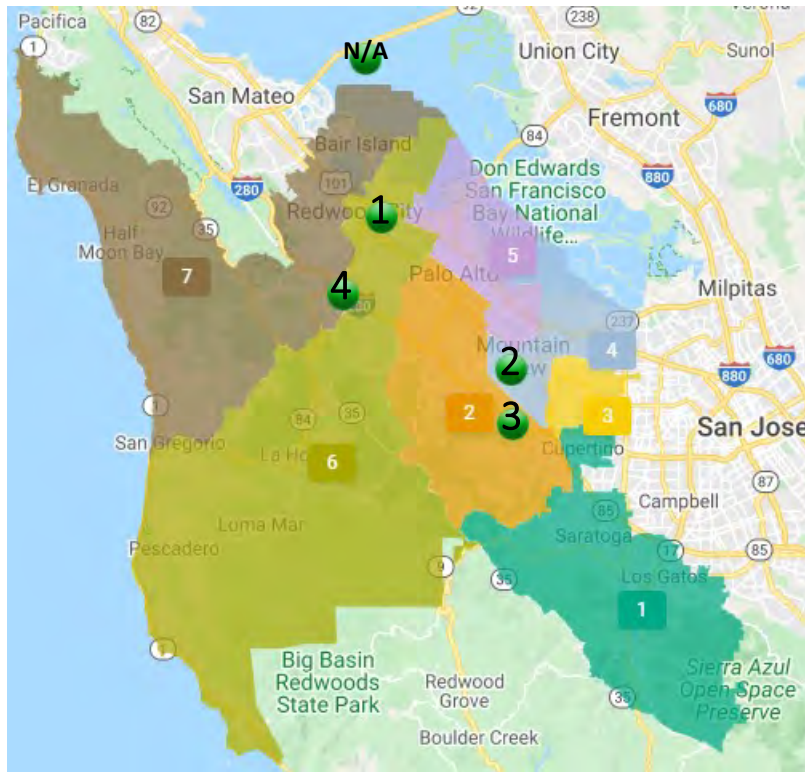
## Scenario A (road-centric plan)



ID	Comment	Type	Date	Name
8	I like A and B, with a preference toward A since the lines are less jagged as they are based on roads. And Board members would have a better idea where their ward ends. But either is better than C. Nice website BTW.	Like	12/10/2021	Ken Nitz
7	My preference is for option A. As others have mentioned, both A and B address the strange "gerrymandered" look of the current wards (and option C). I prefer the cleaner separations in A, and in particular that it doesn't split preserves like Fremont Older across wards.	Like	12/8/2021	Craig Gleason
6	The regional map is best. I agree that the Mountain View and Sunnyvale regions should be combined into one.	Like	12/2/2021	Steve Horeff
5	I like both A and B, with a slight preference for A, siding with Stephen, Lori and Matt. Are Mountain View and Sunnyvale wards really that high density that they are so small geographically?	Like	11/13/2021	Ken Turkowski
4	Options A and B both appear to be very reasonable. Option C looks convoluted.	Like	11/8/2021	Stephen Brodsky

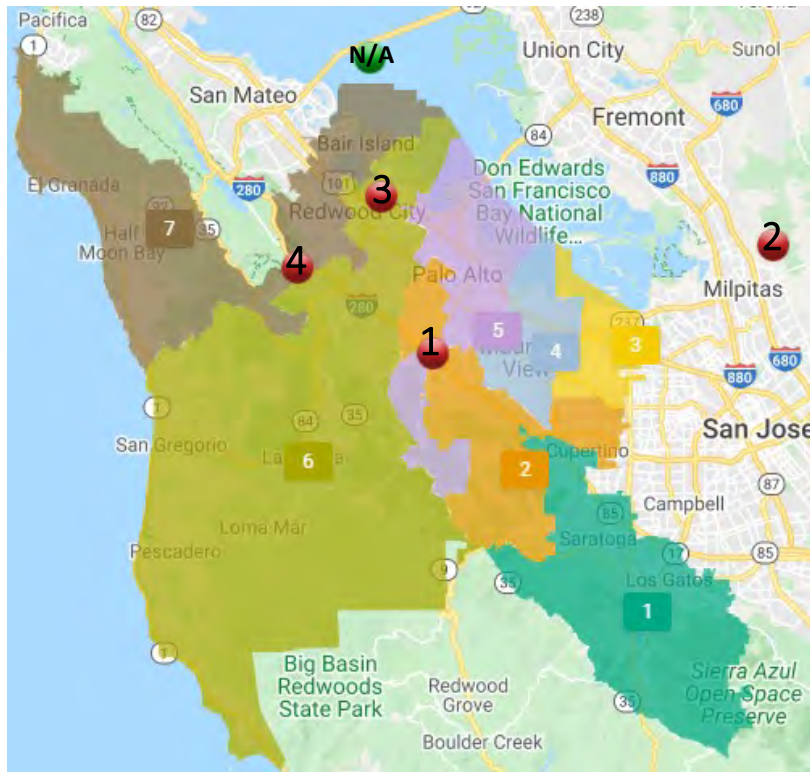
<b>3</b>	I agree with Matt Brunnings. Also, I want to see more regionalism in Bay Area governance and less city based divisiveness.	Like	11/7/2021	Lori Jan
<b>2</b>	I would be interested to know if the review process included any maps that would give a larger voice to BIPOC communities. While that is not a requirement here it is of great concern when redistricting for the CVRA.	Opinion	11/2/2021	Hilary Paulson
<b>1</b>	This is my preferred option. I like how the wards are shaped regularly and the boundaries make sense.	Like	11/2/2021	Matt Brunnings

## Scenario B (city-centric plan)



ID	Comment	Type	Date	Name
4	I like A and B, with a preference toward A since the lines are less jagged as they are based on roads. And Board members would have a better idea where their ward ends. But either is better than C. Nice website BTW.	Like	12/10/2021	Ken Nitz
3	The maps are difficult to read - there is unnecessary noise for this evaluation (e.g. preserve boundaries, topography) and city borders stand out more than the boundaries of the proposed wards in all 3 scenarios. That noted, I strongly dislike C (agree with prior 'gerrymandering' comment) and prefer B over A. Ward assignments by city boundaries to the maximum extent possible makes more sense than traffic corridors and will be easier for the public to understand.	Like	11/22/2021	Jack Kay
2	I very much dislike C; it makes little sense, and looks too much like 'gerrymandering'. Either A or B would be OK, but I prefer B ("city centric"), as - by tying wards more to towns/cities - it makes it clearer to people which ward they belong to.	Like	11/13/2021	Ross Finlayson
1	I like both A and B, perhaps with a slight preference for A, but B is entirely reasonable as well. It seems that the main difference is in Mountain View.	Like	11/13/2021	Ken Turkowski

### Scenario C (minimal change plan)



ID	Comment	Type	Date	Name
4	some of the wards are discontinuous and irregularly shaped. Time to fix.	Dislike	12/10/2021	Ken Nitz
3	I agree with Lori and Matt. This partitioning doesn't make sense.	Dislike	11/13/2021	Ken Turkowski
2	I agree with Matt Brunnings regarding the odd shaped wards.	Dislike	11/7/2021	Lori Jan
1	The odd shaped wards make me feel like it is time to redraw them.	Dislike	11/3/2021	Matt Brunnings