



Midpeninsula Regional Open Space District

R-22-44
Meeting 22-10
March 23, 2022

AGENDA ITEM 7

AGENDA ITEM

Public Hearing and Adoption of the New Redistricting Ward Boundary Map

GENERAL MANAGER'S RECOMMENDATIONS *den*

1. Hold a public hearing to obtain public comment regarding consideration of the preferred redistricting scenario map.
2. Adopt a resolution establishing the boundaries of Midpeninsula Regional Open Space District wards that align with the preferred redistricting scenario map.

SUMMARY

The General Manager recommends that the Midpeninsula Regional Open Space District (District) Board of Directors (Board) hear public comment regarding consideration of the preferred redistricting scenario map and adopt a resolution establishing the boundaries of District wards that align with the preferred redistricting scenario map.

DISCUSSION

The District is required by law to redistrict its seven ward boundaries following each federal decennial census to ensure voting power and representation is distributed equally, based on population size. The 2020 Census illustrates that population growth was uneven throughout the District's communities over the last ten years and the current ward boundaries should be reconsidered to account for changes in population distribution. Principles of redistricting encourage equalizing populations between wards as far as practicable, avoiding minority vote dilution, ensuring territory is contiguous (not fragmented), compact (not sprawled), and maintaining cohesive neighborhoods and communities of interest.

The District began the redistricting process on August 11, 2021 when staff provided an overview of the redistricting process, including relevant laws and statutes, and proposed a draft set of criteria ([R-21-107](#)). On August 25, 2021, the Board adopted a final set of criteria to guide the redistricting process that incorporates state and federal law as well as District-specific criteria ([R-21-115](#)). Following the release of the 2020 Census data, staff created three draft redistricting scenario plans and presented them at a public hearing on October 27, 2021 ([R-21-146](#)). Based on Board direction, staff adjusted the Ward 6/7 boundary to improve cohesion of the Kings Mountain community in two scenarios and posted all three scenarios to the *MyDistricting* public comment tool to solicit feedback over a six-week period. Public comments indicated a majority preference for Scenario A (the road-centric plan), minority preference for Scenario B (the city-

centric plan), and opposition against Scenario C (the minimal change plan). On January 26, 2022, the Board reviewed all public feedback received and selected Scenario A as the preferred scenario to consider for adoption at a future public hearing ([R-22-11](#)).

Scenario A

Scenario A equalizes ward populations and has a total plan deviation of 6.63%. Ward 3 is the largest ward at 112,776 (3.45% above the ideal population) and Ward 5 is the smallest ward at 105,543 (-3.18% below the ideal population). Scenario A avoids minority vote dilution and comports with the Voting Rights Act. Scenario A provides contiguous, compact ward territory and improves community cohesion at the neighborhood scale. Scenario A is road-centric and uses major transportation corridors (throughfares such as freeways, highways, and arterial roads) to divide wards because roads often help define community/neighborhood identity. By using common physical landmarks (thoroughfares), this plan is simple and easy-to-interpret. The table below provides detailed population and race/ethnicity values for Scenario A. Overview and detailed ward maps are provided as exhibits to the attached resolution (Attachment 1).

Ward	Total Population Tabulation				Racial and Ethnic Demographics				
	All Persons	Target	Deviation	Diff.	White	Asian	Black or African American	Other race(s)	Hispanic/Latino origin
1	109,009	109,010	0.00%	-1	44.6%	45.4%	0.6%	9.4%	5.6%
2	109,675	109,010	0.61%	665	49.7%	36.0%	2.0%	12.2%	7.6%
3	112,776	109,010	3.45%	3,766	29.4%	51.1%	1.4%	18.1%	15.7%
4	110,939	109,010	1.77%	1,929	41.8%	38.9%	1.2%	18.0%	14.1%
5	105,543	109,010	-3.18%	-3,467	31.8%	27.7%	5.0%	35.6%	31.3%
6	107,559	109,010	-1.33%	-1,451	48.7%	12.0%	1.5%	37.8%	36.0%
7	107,571	109,010	-1.32%	-1,439	62.4%	16.2%	1.0%	20.5%	16.4%

If adopted, the new ward boundaries will be used for the November 8, 2022 general election. Staff will update District resources and information post-adoption to reflect the new boundaries.

FISCAL IMPACT

There is no fiscal impact associated with the recommendation.

BOARD AND COMMITTEE REVIEW

This project previously came to the Board of Directors at the following public meetings:

- **October 10, 2020:** District staff provided a [memo](#) updating the Board on the consultant selection process, systematic delays to receiving the 2020 Census data, and background on the 2010 redistricting process.
- **August 11, 2021:** District staff and Citygate provided a presentation on the redistricting process and proposed a set of criteria for Board consideration. The Board reviewed and provided feedback on the proposed criteria. ([R-21-23](#), [minutes](#))
- **August 25, 2021:** Board adopted final criteria to guide the redistricting process. ([R-21-115](#), [minutes](#))

- **October 27, 2021:** District staff presented three draft redistricting scenario maps. The Board reviewed and provided feedback, directing staff to modify the Ward 6/7 boundary to unify the Kings Mountain community under one ward and to post final scenarios to the *MyDistricting* online public comment tool. ([R-21-146](#), [minutes](#))
- **January 26, 2022:** Board reviewed adjusted scenarios and selected Scenario A as the preferred scenario to be brought to a public hearing for a vote on its adoption. ([R-22-11](#), [minutes](#))

PUBLIC NOTICE

Public notice was provided as required by the Ralph M. Brown Act. Additional notification was also provided to the District Agenda interested party subscribers, individuals who expressed interest in the redistricting process, regional newspapers, local newsletters, community organizations, and homeowner/neighborhood associations located in areas of change. The public hearing was noticed in the San Jose Post-Record on March 18, 2022.

CEQA COMPLIANCE

This item is not a project subject to the California Environmental Quality Act.

NEXT STEPS

Upon approval by the Board, staff would proceed with establishing District ward boundaries to align with Scenario A and county assessor parcel boundaries, then submit final maps and documentation to the election offices of San Mateo, Santa Clara and Santa Cruz counties. Alignment with county assessor parcel boundaries is necessary to ensure proper distribution of voter ballots for future elections and may require very minor adjustments for select individual parcels where there may be mapping discrepancies between ward lines and parcel lines, which may primarily occur in rural, low population areas.

Attachments

1. Resolution establishing the boundaries of District wards to align with the preferred redistricting scenario map

Responsible Department Head:

Casey Hiatt, Information Systems & Technology

Prepared by:

Jamie Hawk, GIS Program Administrator, Information Systems & Technology

RESOLUTION NO. 22-XX**RESOLUTION OF THE BOARD OF DIRECTORS OF THE
MIDPENINSULA REGIONAL OPEN SPACE DISTRICT ADJUSTING
EXISTING WARD BOUNDARIES BASED ON THE 2020 UNITED STATES
CENSUS**

WHEREAS, the Board of Directors (“Board”) of the Midpeninsula Regional Open Space District (“District”) has reviewed population figures provided by the 2020 United States Census for the District’s seven wards; and

WHEREAS, it has been determined that ward boundary adjustments are necessary in order to achieve equal population, as far as practicable, per ward based on the 2020 United States Census data; and

WHEREAS, the District ward boundary adjustments are based on the following criteria: 1) Comply with all applicable laws, including the avoidance of gerrymandering; 2) Ward boundaries should be substantially equal in population; 3) Ensure that minority voting strength is not diluted and avoid the fragmentation or over-compaction of minority groups as provided in the Voting Rights Act; 4) Maintain cohesive neighborhoods and communities of interest and, where possible, keep city representation intact within a single ward; 5) To the extent possible, ward boundaries shall be created to contain compact, cohesive, and contiguous territory; 6) Strive to ensure coastside community interests are represented appropriately; and 7) Unless otherwise required by law, ward boundaries shall be created using 2020 Census geography and population data; and

WHEREAS, pursuant to California Elections Code section 22001, the Board held a duly noticed public hearing on October 27, 2021 on the proposal to adjust the ward boundaries and a duly noticed public hearing on March 23, 2022 prior to adoption of the proposed ward boundary adjustments.

NOW, THEREFORE, BE IT RESOLVED by the Directors of the Midpeninsula Regional Open Space District as follows:

SECTION ONE. Pursuant to Elections Code Section 22000 and Public Resources Code Section 5534, ward boundaries are hereby adjusted for wards of the Midpeninsula Regional Open Space District as described schematically in Exhibits A-H attached hereto and as delineated in detail on file with the District Clerk in the District Administration Office, which documents are incorporated herein by reference:

Exhibit A: Overview Map
Exhibit B: Ward 1 Map
Exhibit C: Ward 2 Map
Exhibit D: Ward 3 Map
Exhibit E: Ward 4 Map
Exhibit F: Ward 5 Map
Exhibit G: Ward 6 Map
Exhibit H: Ward 7 Map

SECTION TWO. The ward boundaries as established by the Board of Directors of the Midpeninsula Regional Open Space District on October 19, 2011, with respect to the wards in Santa Clara County, Santa Cruz County and San Mateo County by Resolution No. 11-34 are superseded by this resolution.

SECTION THREE. Pursuant to Election Code Section 10522, the following statement indicates in which wards a director is to be elected at the next biennial general election to be held on November 8, 2022 (Ward 1, Ward 2, Ward 5, and Ward 6), and in which wards a director is to be elected on the succeeding general election to be held on November 5, 2024 (Ward 3, Ward 4, and Ward 7).

SECTION FOUR. Because the new redistricting plan may contain technical anomalies caused by errors in the 2020 Census line files that do not substantively affect the populations in the director divisions, the division boundaries, or the intent of this resolution, which anomalies are not revealed until implementation begins, the General Manager and/or designee are authorized to make technical emendations to the new redistricting plan that do not substantively affect the populations in the director divisions, the division boundaries, or the intent of this resolution, and shall advise the Board of any such emendations that are found to be required in plan implementation by the respective county elections officials.

* * * * *

PASSED AND ADOPTED by the Board of Directors of the Midpeninsula Regional Open Space District on _____, 2022, at a regular meeting thereof, by the following vote:

AYES:

NOES:

ABSTAIN:

ABSENT:

ATTEST:

APPROVED:

Karen Holman, Secretary
Board of Directors

Zoe Kersteen-Tucker, President
Board of Directors

APPROVED AS TO FORM:

Hilary Stevenson, General Counsel

I, the District Clerk of the Midpeninsula Regional Open Space District, hereby certify that the above is a true and correct copy of a resolution duly adopted by the Board of Directors of the Midpeninsula Regional Open Space District by the above vote at a meeting thereof duly held and called on the above day.

Jennifer Woodworth, District Clerk

Scenario A

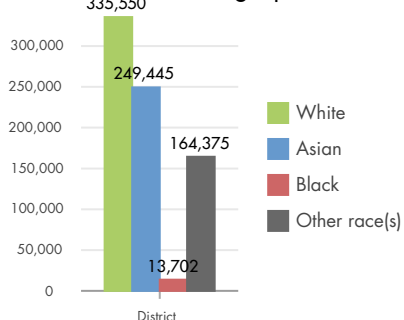
Overview Map
Census 2020 Redistricting



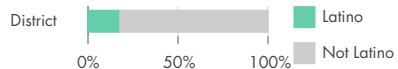
763,072 persons

Target population per ward: 109,010

Racial demographics



Hispanic/Latino origin



Map legend

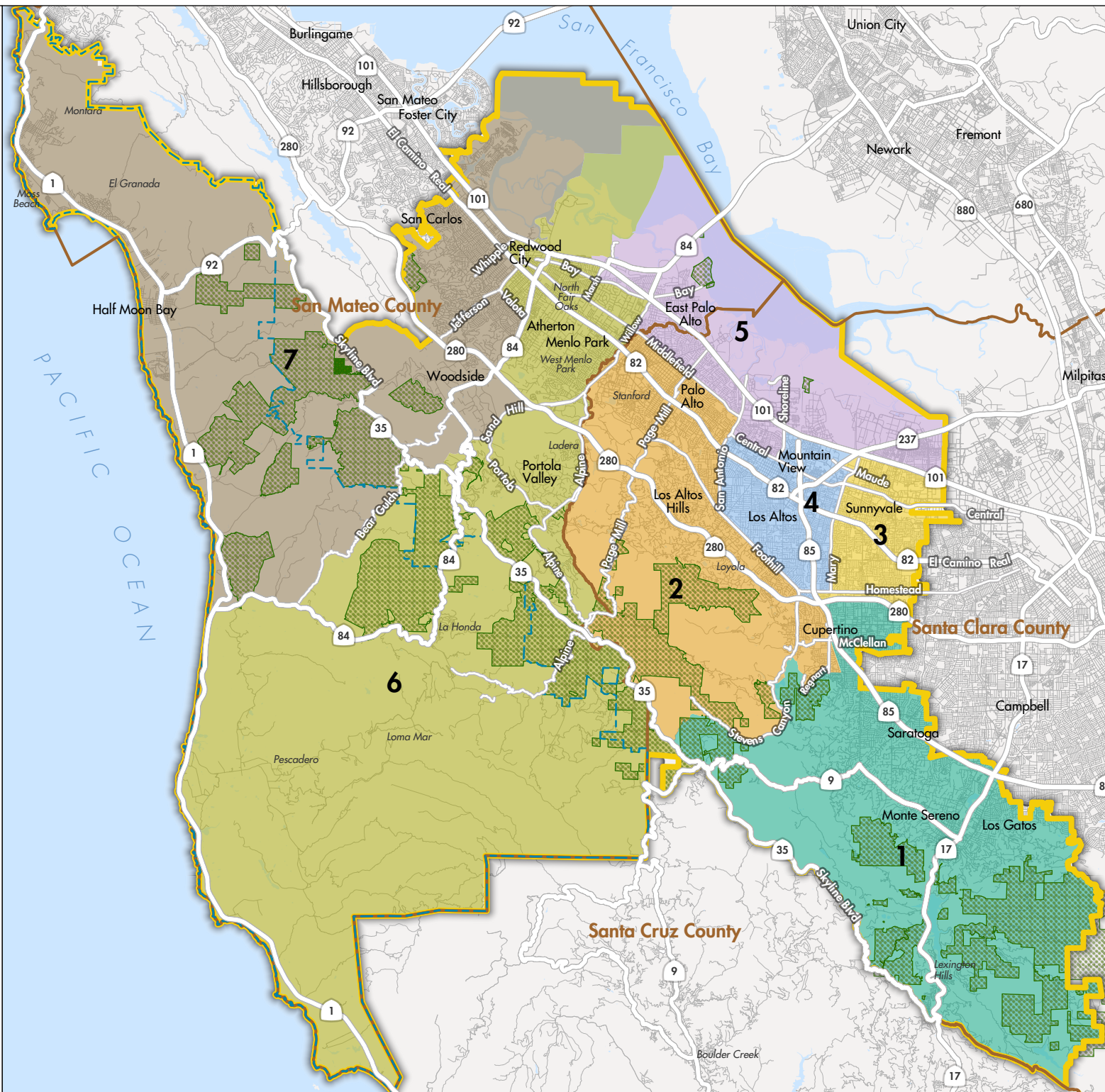
Ward boundaries



Wards constructed from 2020 Census block geography.

- County boundary
- District boundary
- Sphere of influence
- Coastside protection area
- Preserve boundary
- Incorporated city/town
- Census designated place

Midpeninsula Regional
Open Space District
3/2/2022



Ward 1

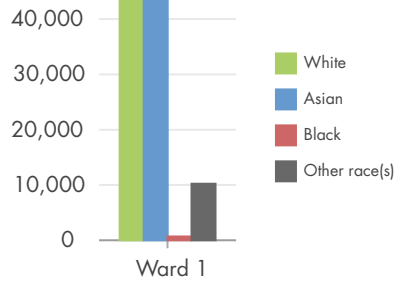
Detailed Map

Census 2020 Redistricting

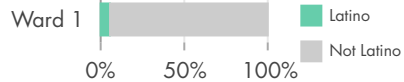


109,009 persons
0.00% from target population

Racial demographics



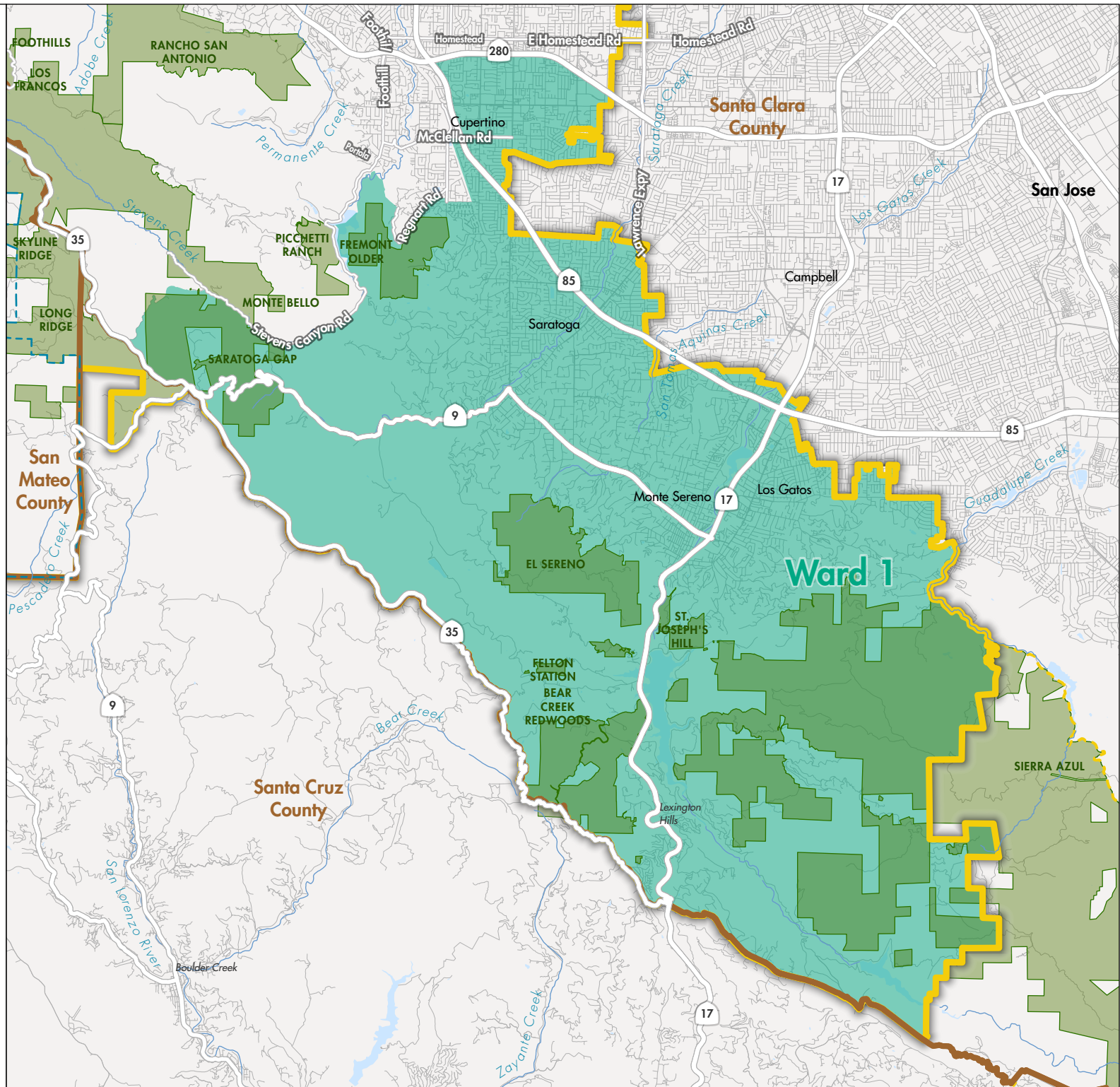
Hispanic/Latino origin



Map legend

- County boundary
- District boundary
- Sphere of influence
- Coastside protection area
- Preserve boundary
- Incorporated city/town
- Census designated place

Midpeninsula Regional
Open Space District
3/1/2022



Ward 2

Detailed Map
Census 2020 Redistricting

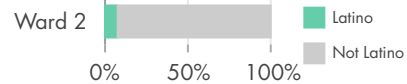


109,675 persons
+0.61% from target population

Racial demographics



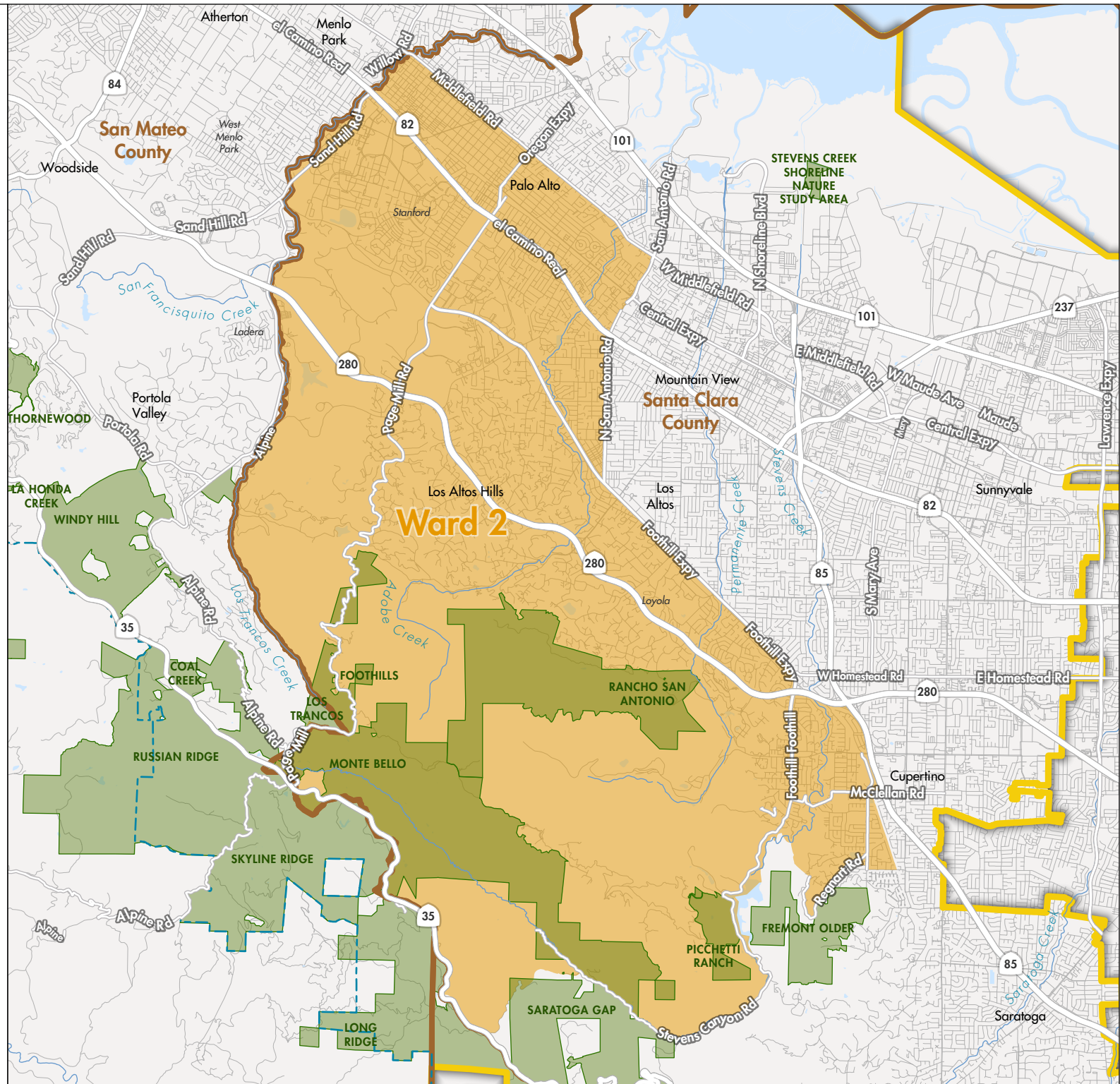
Hispanic/Latino origin



Map legend

- County boundary
- District boundary
- Sphere of influence
- Coastside protection area
- Preserve boundary
- Incorporated city/town
- Census designated place

Midpeninsula Regional
Open Space District
3/1/2022



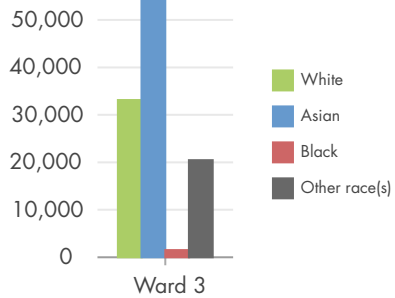
Ward 3

Detailed Map
Census 2020 Redistricting

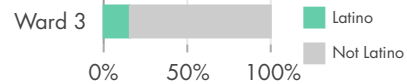


112,776 persons
+3.45% from target population

Racial demographics



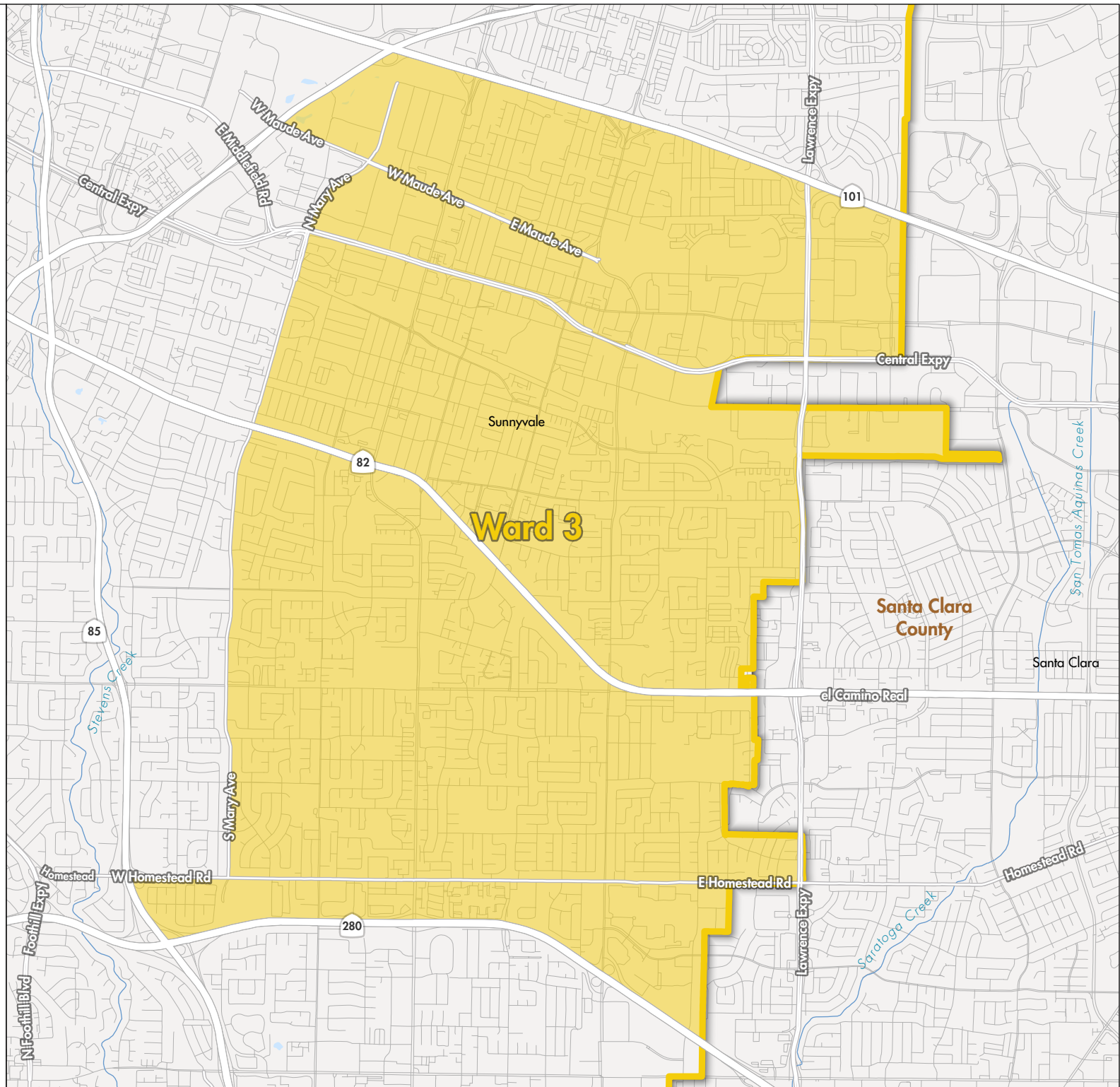
Hispanic/Latino origin



Map legend

- County boundary
- District boundary
- Sphere of influence
- Coastside protection area
- Preserve boundary
- Aa Incorporated city/town
- Aa Census designated place

Midpeninsula Regional
Open Space District
3/1/2022



Ward 4

Detailed Map
Census 2020 Redistricting

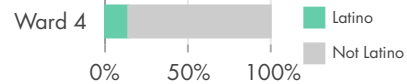


110,939 persons
+1.77% from target population

Racial demographics



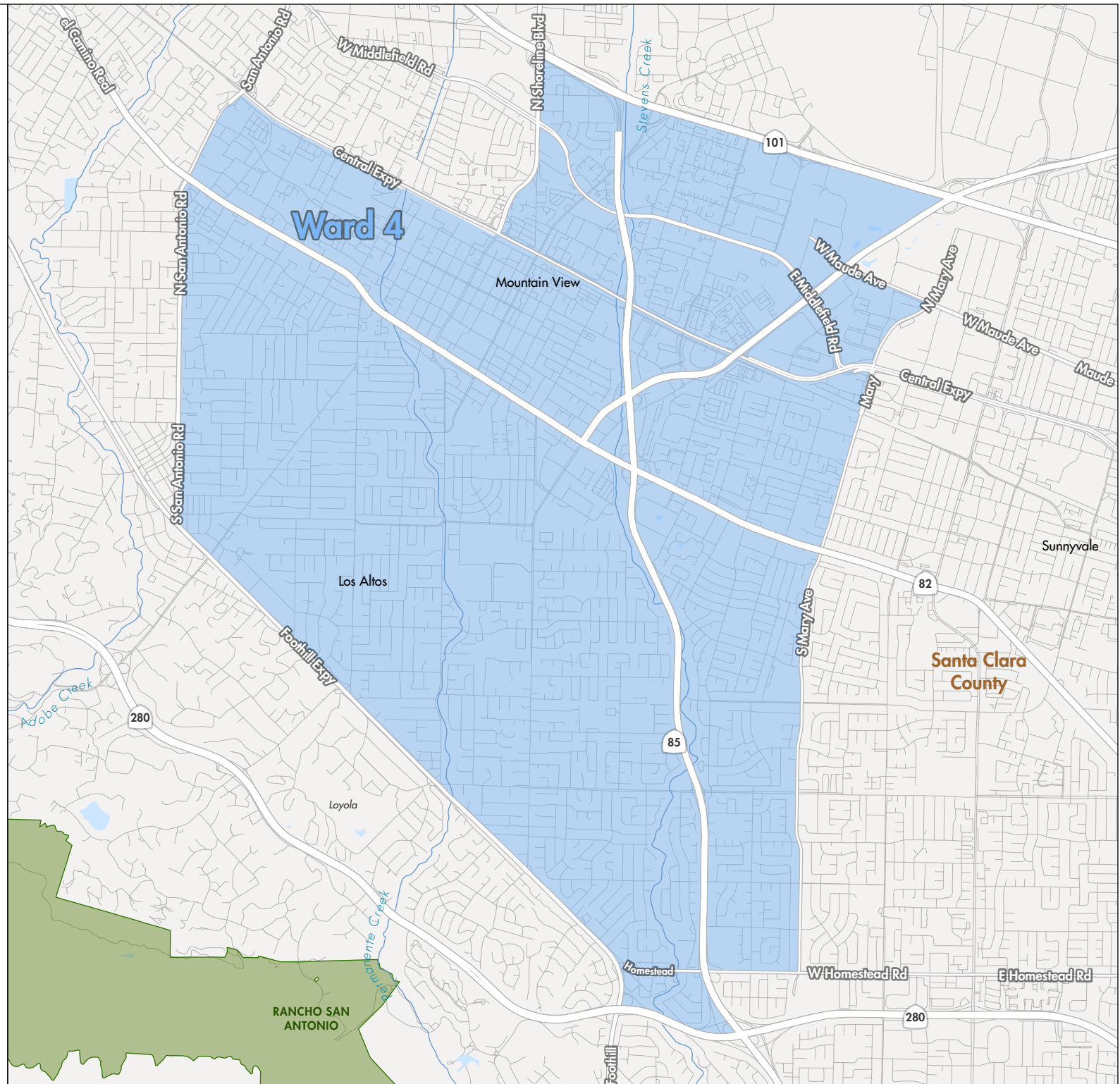
Hispanic/Latino origin



Map legend

- County boundary
- District boundary
- Sphere of influence
- Coastside protection area
- Preserve boundary
- Aa Incorporated city/town
- Aa Census designated place

Midpeninsula Regional
Open Space District
3/1/2022



Ward 5

Detailed Map
Census 2020 Redistricting



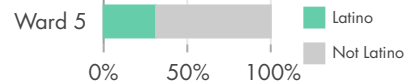
105,543 persons

-3.18% from target population

Racial demographics



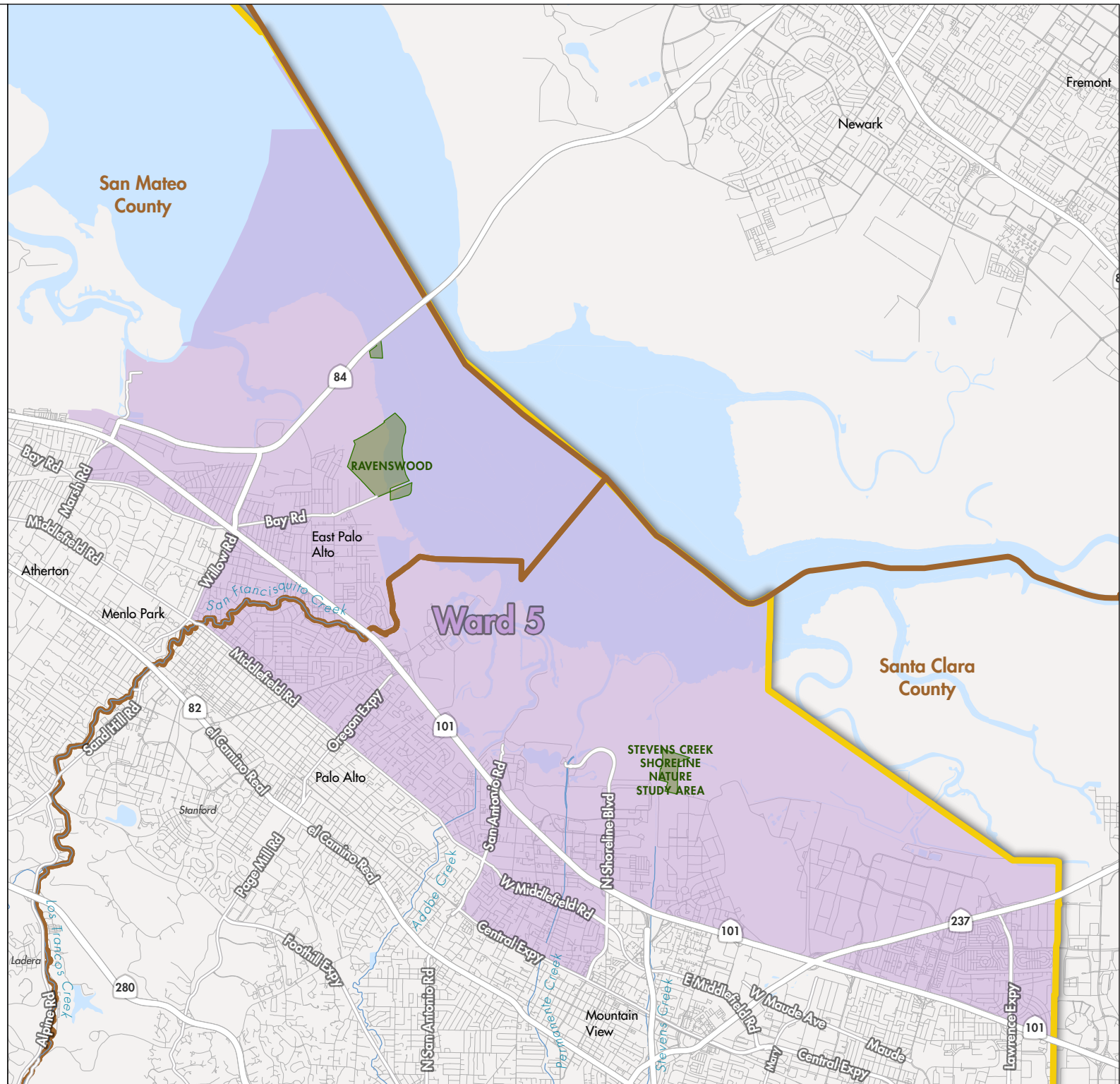
Hispanic/Latino origin



Map legend

- County boundary
- District boundary
- Sphere of influence
- Coastside protection area
- Preserve boundary
- Aa Incorporated city/town
- Aa Census designated place

Midpeninsula Regional
Open Space District
3/1/2022



Ward 6

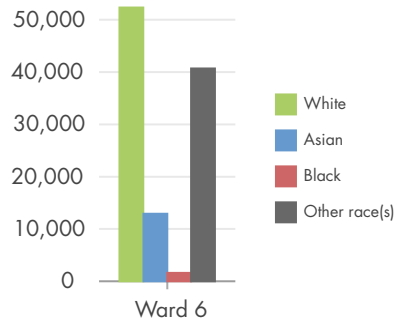
Detailed Map
Census 2020 Redistricting



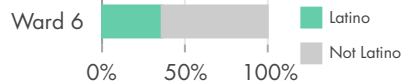
107,559 persons

-1.33% from target population

Racial demographics



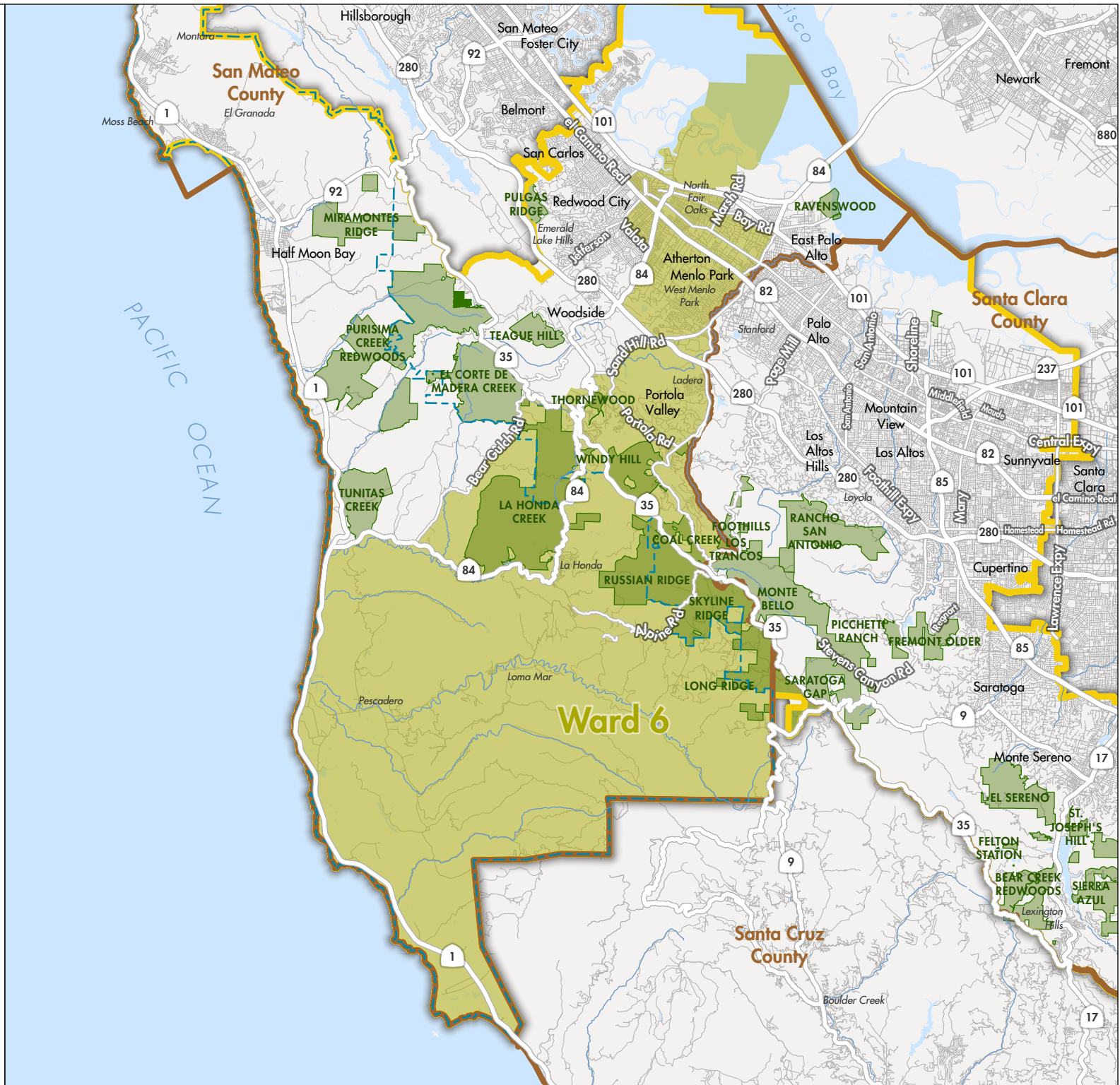
Hispanic/Latino origin



Map legend

- County boundary
- District boundary
- Sphere of influence
- Coastside protection area
- Preserve boundary
- Incorporated city/town
- Census designated place

Midpeninsula Regional
Open Space District
3/1/2022



Ward 7

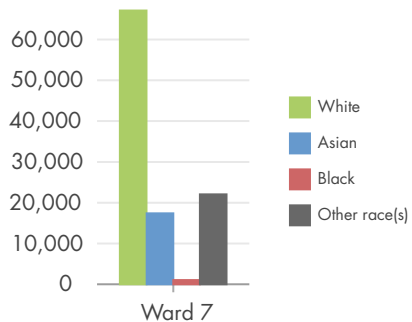
Detailed Map
Census 2020 Redistricting



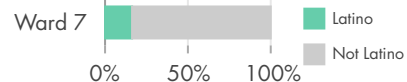
107,571 persons

-1.32% from target population

Racial demographics



Hispanic/Latino origin



Map legend

- County boundary
- District boundary
- Sphere of influence
- Coastside protection area
- Preserve boundary
- Aa Incorporated city/town
- Aa Census designated place

Midpeninsula Regional
Open Space District
3/1/2022

