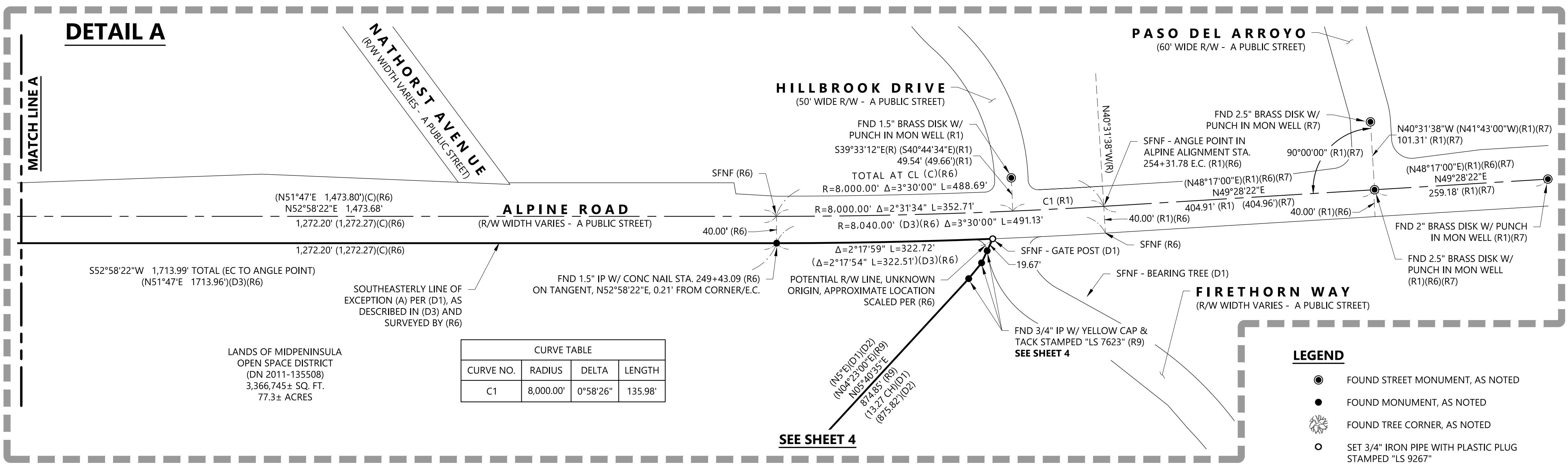


DETAIL A

MATCH LINE A

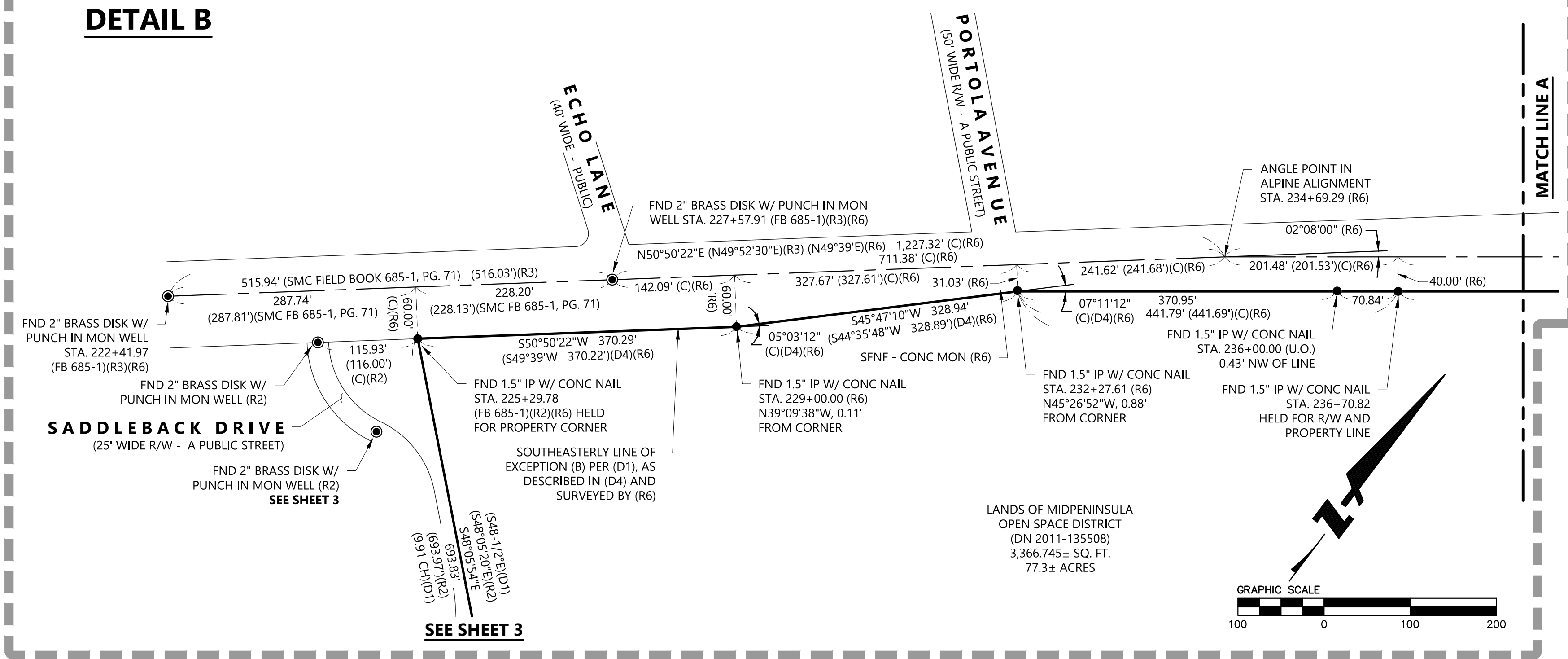


LEGEND

- FOUND STREET MONUMENT, AS NOTED
- FOUND MONUMENT, AS NOTED
- FOUND TREE CORNER, AS NOTED
- SET 3/4" IRON PIPE WITH PLASTIC PLUG STAMPED "LS 9267"

- APN ASSESSOR'S PARCEL NUMBER
- (C) CALCULATED FROM RECORD DATA
- CH CHAINS
- CL CENTERLINE
- CONC CONCRETE
- DN DOCUMENT NUMBER
- (D#) DENOTES RECORD DOCUMENT REFERENCE
- E.C. END OF CURVE
- FB FIELD BOOK ON FILE AT SMC DPW
- FND FOUND
- IP IRON PIPE
- LS LICENSED SURVEYOR
- MON MONUMENT
- PLS PROFESSIONAL LAND SURVEYOR
- RCE REGISTERED CIVIL ENGINEER
- (R) DENOTES RADIAL BEARING
- (R#) DENOTES RECORD MAP REFERENCE
- R/W RIGHT-OF-WAY
- SMC SAN MATEO COUNTY
- SFNF SEARCHED FOR, NOT FOUND
- SQ. FT. SQUARE FOOT
- STA. STATION PER ALPINE ALIGNMENT (R6)(FB 685-1)
- U.O. UNKNOWN ORIGIN

DETAIL B



LINETYPES

- SUBJECT BOUNDARY LINE
- ADJACENT LOT LINE
- ROAD CENTERLINE
- TIE LINE/RADIAL LINE

BOUNDARY SURVEY

OF THE LANDS OF MIDPENINSULA OPEN SPACE DISTRICT AS DESCRIBED IN THAT CERTAIN TRUSTEE'S DEED RECORDED NOVEMBER 10, 2011 AS DOCUMENT NO. 2011-135508 OF SAN MATEO COUNTY RECORDS

TOWN OF PORTOLA VALLEY SAN MATEO COUNTY STATE OF CALIFORNIA

SCALE 1" = 100' FEBRUARY 2022

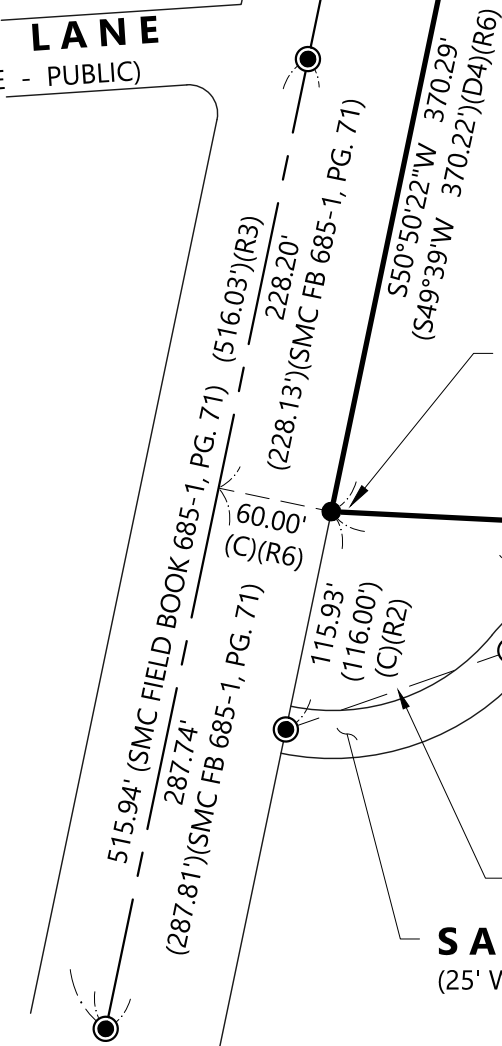


255 SHORELINE DR.,
SUITE 200
REDWOOD CITY, CA 94065
(650) 482-6300
www.bkf.com

DETAIL C

SEE SHEET 2

ECHO LANE
(40' WIDE - PUBLIC)



MATCH LINE B

LEGEND

- FOUND STREET MONUMENT, AS NOTED ON SHEET 2
- FOUND MONUMENT, AS NOTED
- FOUND FENCE POST CORNER, AS NOTED
- FOUND TREE CORNER, AS NOTED
- SET 3/4" IRON PIPE WITH PLASTIC PLUG STAMPED "LS 9267"

APN	ASSESSOR'S PARCEL NUMBER
(C)	CALCULATED FROM RECORD DATA
CH	CHAINS
DN	DOCUMENT NUMBER
(D#)	DENOTES RECORD DOCUMENT REFERENCE
FB	FIELD BOOK ON FILE AT SMC DPW
FND	FOUND
IP	IRON PIPE
LS	LICENSED SURVEYOR
MON	MONUMENT
O.R.	OFFICIAL RECORDS
PLS	PROFESSIONAL LAND SURVEYOR
RCE	REGISTERED CIVIL ENGINEER
(R)	DENOTES RADIAL BEARING
(R#)	DENOTES RECORD MAP REFERENCE
R/W	RIGHT-OF-WAY
SCC	SANTA CLARA COUNTY
SMC	SAN MATEO COUNTY
SFNF	SEARCHED FOR, NOT FOUND
SQ. FT.	SQUARE FOOT
STA.	STATION PER ALPINE ALIGNMENT (R6)(FB 685-1)

LINETYPES

---	SUBJECT BOUNDARY LINE
---	ADJACENT LOT LINE
-x-x-x-x-x-	BARBED WIRE FENCE LINE
- - - - -	CREEK BANK
- - - - -	CREEK CENTERLINE
---	ROAD CENTERLINE
- - - - -	TIE LINE/RADIAL LINE

BOUNDARY SURVEY

OF THE LANDS OF MIDPENINSULA OPEN SPACE DISTRICT AS DESCRIBED IN THAT CERTAIN TRUSTEE'S DEED RECORDED NOVEMBER 10, 2011 AS DOCUMENT NO. 2011-135508 OF SAN MATEO COUNTY RECORDS

TOWN OF PORTOLA VALLEY SAN MATEO COUNTY STATE OF CALIFORNIA

SCALE 1" = 100'

FEBRUARY 2022

BKF
255 SHORELINE DR.,
SUITE 200
REDWOOD CITY, CA 94065
(650) 482-6300
www.bkf.com

DETAIL D

SEE SHEET 4

FND 44" DIAMETER OAK TREE WITH 3 HACK MARK SCARS AND BRASS TAG STAMPED "LS 6766" ON SOUTHEASTERLY FACE WITH BARBED WIRE RUNNING SOUTHEASTERLY AND SOUTHWESTERLY (R8)(D1)

LANDS OF MIDPENINSULA OPEN SPACE DISTRICT (DN 2011-135508) 3,366,745± SQ. FT. 77.3± ACRES

* NOTE: DISTANCES INDICATED HEREON TO MATCH RECORD PER (R8) HAVE BEEN CONVERTED FROM GRID TO GROUND BY APPLYING THE SCALE FACTOR SPECIFIED BY (R8)

LANDS OF PORTOLA VALLEY ASSOCIATES (7940 O.R. 074) (LOT "M") (106 MAPS 26-32)

FND 1" IP WITH CAP STAMPED "LS 6766" (R8)

FND 1" IP WITH CAP STAMPED "LS 6766" (R8)

LANDS OF HENRY (DN 23041496 SCC) APN 182-36-022

LANDS OF INNOVATIVE HOMES, LLC (PARCEL ONE) (DN 24753856 SCC) APN 182-46-012

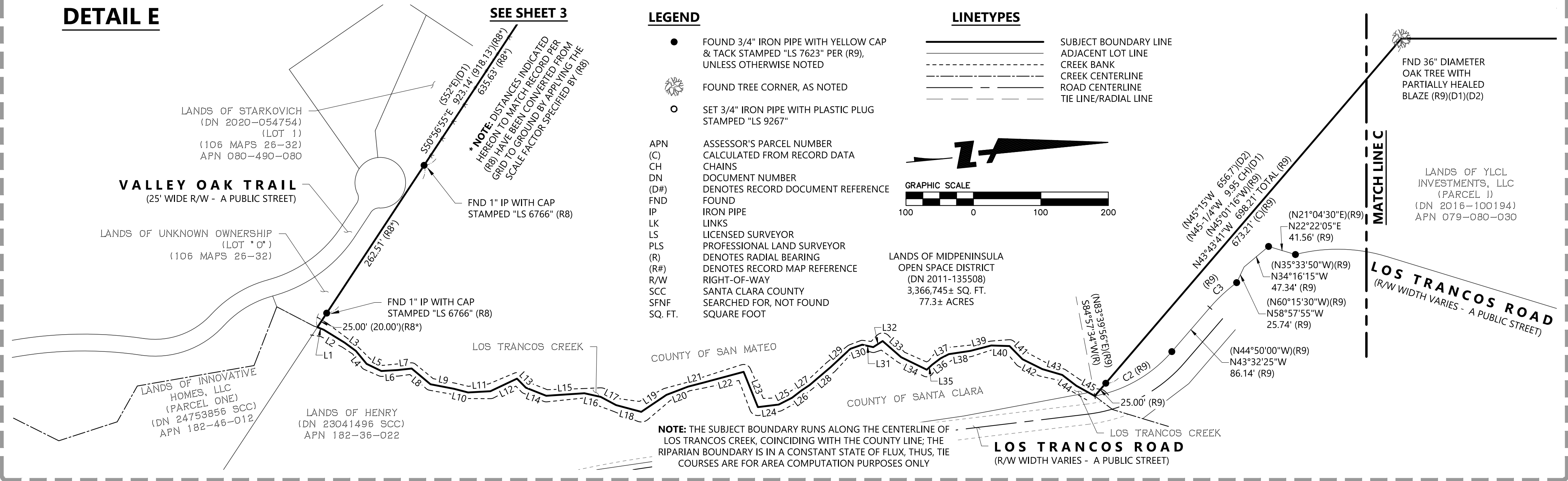
LANDS OF UNKNOWN OWNERSHIP (LOT "O") (106 MAPS 26-32)

VALLEY OAK TRAIL
(25' WIDE R/W - A PUBLIC STREET)

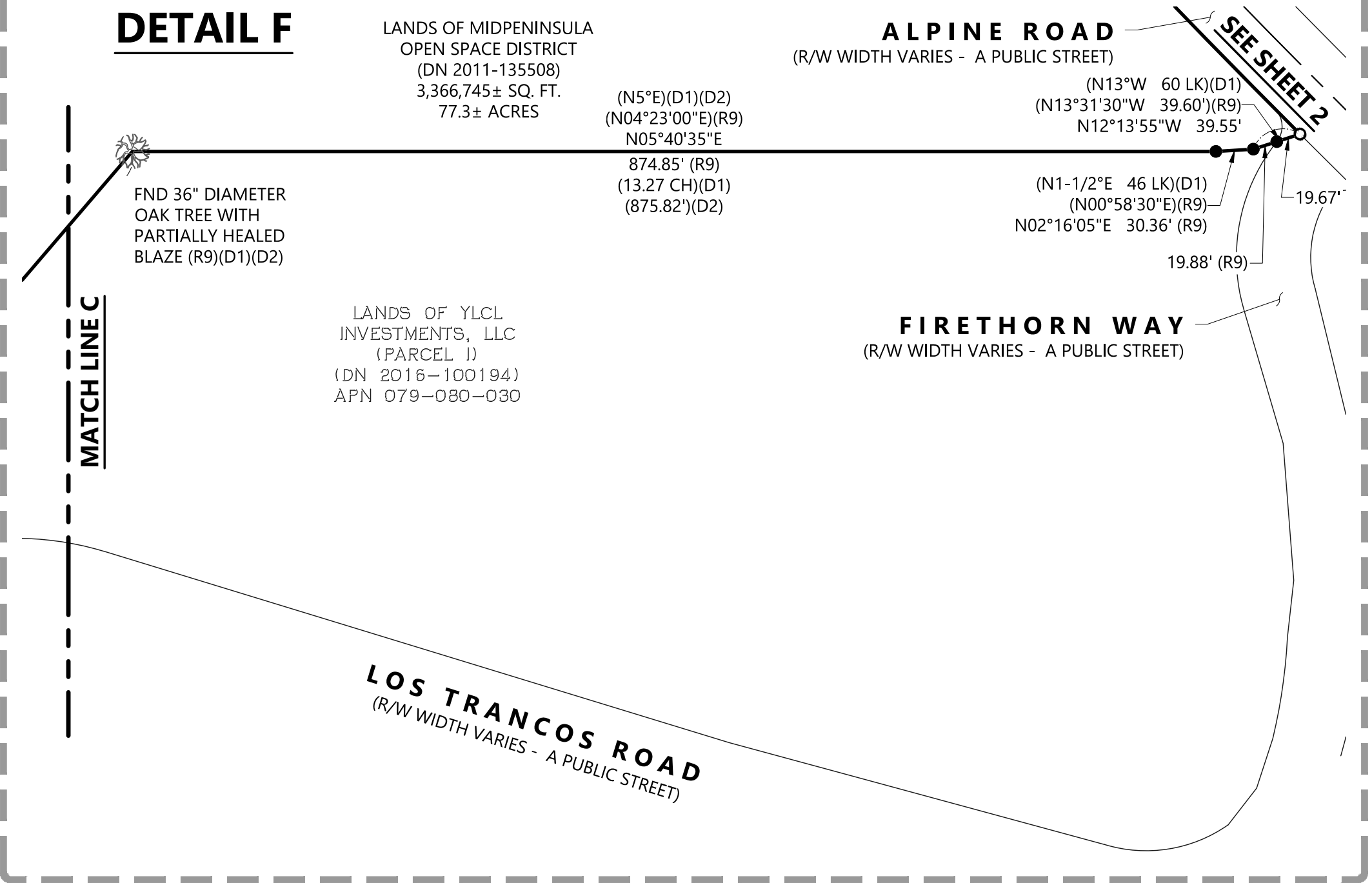
MATCH LINE B

FND 41" DIAMETER OAK TREE WITH 3 HACK MARK SCARS AND BRASS TAG STAMPED "LS 6766" ON NORTHERLY FACE WITH BARBED WIRE RUNNING NORTHEASTERLY AND SOUTHWESTERLY (R8)(D1)

DETAIL E



DETAIL F



LINE TABLE			LINE TABLE			LINE TABLE			LINE TABLE		
LINE NO.	DIRECTION	LENGTH	LINE NO.	DIRECTION	LENGTH	LINE NO.	DIRECTION	LENGTH	LINE NO.	DIRECTION	LENGTH
L1	N27°07'39"E	9.81'	L13	N51°17'54"E	18.80'	L25	N21°21'29"W	22.22'	L37	N21°07'41"W	13.59'
L2	N37°24'42"E	36.79'	L14	N27°21'30"E	32.49'	L26	N31°44'32"W	17.74'	L38	N03°01'18"W	32.25'
L3	N41°54'58"E	20.70'	L15	N01°51'30"E	56.71'	L27	N28°22'31"W	14.30'	L39	N08°46'37"W	31.98'
L4	N56°06'17"E	24.87'	L16	N18°18'52"E	24.83'	L28	N34°47'17"W	41.00'	L40	N07°31'33"E	27.16'
L5	N31°27'51"E	24.26'	L17	N33°52'38"E	25.80'	L29	N37°08'42"W	39.91'	L41	N51°07'46"E	27.34'
L6	N02°23'38"E	24.20'	L18	N20°40'16"E	38.67'	L30	N13°40'27"W	18.49'	L42	N32°09'51"E	32.78'
L7	N00°27'34"W	20.95'	L19	N28°20'34"W	45.08'	L31	N18°05'25"E	16.82'	L43	N22°01'29"E	30.86'
L8	N45°40'24"E	36.28'	L20	N15°14'19"W	34.33'	L32	N27°13'04"W	16.56'	L44	N43°10'32"E	26.39'
L9	N16°37'50"E	35.54'	L21	N08°55'57"W	23.83'	L33	N46°42'57"E	36.49'	L45	N34°47'52"E	31.30'
L10	N20°13'19"E	21.56'	L22	N09°17'51"W	61.38'	L34	N31°44'56"E	42.19'			
L11	N02°33'58"E	33.12'	L23	N73°40'10"E	56.41'	L35	N37°15'43"W	10.79'			
L12	N19°43'15"W	43.63'	L24	N01°22'29"W	31.14'	L36	N31°29'52"W	15.94'			

CURVE TABLE			
CURVE NO.	RADIUS	DELTA	LENGTH
C2	200.00'	38°29'59"	134.39'
C3	250.00'	12°29'18"	54.49'

BOUNDARY SURVEY

OF THE LANDS OF MIDPENINSULA OPEN SPACE DISTRICT AS DESCRIBED IN THAT CERTAIN TRUSTEE'S DEED RECORDED NOVEMBER 10, 2011 AS DOCUMENT NO. 2011-135508 OF SAN MATEO COUNTY RECORDS

TOWN OF PORTOLA VALLEY SAN MATEO COUNTY STATE OF CALIFORNIA

SCALE 1" = 100' FEBRUARY 2022

BKF
255 SHORELINE DR.,
SUITE 200
REDWOOD CITY, CA 94065
(650) 482-6300
www.bkf.com