



Midpeninsula Regional
Open Space District

R-23-123
Meeting 23-30
October 25, 2023

AGENDA ITEM 6

AGENDA ITEM

Award of Contract to Sherwood Design Engineers for Engineering and Design Services for the Webb Creek Culvert Replacement Project in Bear Creek Redwoods Open Space Preserve

GENERAL MANAGER'S RECOMMENDATIONS

A handwritten signature in black ink, appearing to read "J. Lee".

1. Authorize the General Manager to execute a contract with Sherwood Design Engineers to complete the design, engineering, permitting, and construction oversight for the Webb Creek Culvert Replacement Project for a base contract amount not-to-exceed \$99,690.
2. Authorize a 10% contingency of \$9,969 to be reserved for unanticipated issues, bringing the total not-to-exceed contract amount to \$109,659.

SUMMARY

On August 24, 2023, the Midpeninsula Regional Open Space District (District) issued a Request for Qualifications and Proposal (RFQP) for design and engineering services in connection with the Webb Creek Culvert Replacement Project (Project) in Bear Creek Redwoods Open Space Preserve. The General Manager recommends awarding an engineering services contract to Sherwood Design Engineers for a base contract amount of \$99,690 and authorizing a 10% contingency amount of \$9,969 for a not-to-exceed contract amount of \$109,659. The scope under the recommended contract will provide services for design, local permitting, and construction administration for replacing the Webb Creek culvert beneath the Alma Parking Area. There are sufficient funds in the adopted Fiscal Year 2023-24 (FY24) project budget to cover the recommended action and expenditures through the end of the fiscal year. Funding for future years budgets will be requested as part of the annual Budget and Action Plan process.

DISCUSSION

The Project is located at the northeastern area of Bear Creek Redwoods Open Space Preserve (Preserve) and consists of replacing an existing 60-inch corrugated metal pipe (CMP) culvert with a 72-inch culvert. The Webb Creek culvert conveys flow from the Webb Creek inlet on the west side of Bear Creek Road owned by County of Santa Clara Roads and Airports (County Roads) and continues under the Alma Parking Area to its outlet on the north side of Alma College Road within the Preserve (Attachment 1, Project Site). The geologic setting is active

and located within the northwest-southeast trending San Andreas Fault Zone, lending additional complexity to the culvert replacement design.

A conditions analysis completed in 2017 for the Webb Creek culvert indicated that portions of the culvert were in poor condition and likely undersized, requiring potential replacement. The culvert condition was further exacerbated during the December 2022 to January 2023 large storm events wherein the culvert inlet section beneath Bear Creek Road failed, creating a sink hole adjacent to the Preserve, further compromising the integrity of the culvert. In April 2023, a geotechnical assessment concluded that replacement of the culvert is required due to damages from the storm and insufficient culvert capacity. In July 2023, County Roads Department completed the emergency repair of the culvert section beneath Bear Creek Road. Concurrently, the District completed a Hydrologic and Hydraulic analysis in August 2023, confirming that the Webb Creek culvert is undersized for a 25-year flow event and recommends upsizing the culvert to 72-inch in anticipation of future large rain events. This information was provided to County Roads who completed their repairs using an upsized 72-inch CMP culvert.

Scope of the Recommended Contract

The contract tasks include:

- Project Management to coordinate with the District and environmental consultant;
- Review Preliminary Culvert Inspection Report, Confined Space Internal Inspection, Hydraulic and Hydrologic Report, as-builts and existing site conditions;
- Perform geotechnical investigations and report on paving recommendations for culvert cover, pre-existing parking usage, and compaction for pipe installation;
- Topographic survey of the Project area;
- Develop schematic alternatives and design plans for regulatory permitting through California Department of Fish and Wildlife, US Fish and Wildlife, and other regulatory permitting agencies as identified by the environmental consultant;
- Develop plans, specifications and construction documents to permit the project through the County of Santa Clara;
- Provide construction administration and oversight as necessary during the construction phase to ensure technical consistency with project plans.

The District is separately soliciting proposals for an environmental consultant to provide environmental services, including, but not limited to: botanical, biological and cultural surveys, preparation of riparian and wetland delineations, preparation of mitigation revegetation plans, and leading the environmental regulatory permit process.

Consultant Selection

On August 24, 2023, the District released the RFQP on Periscope. Staff conducted a mandatory pre-proposal site tour on August 31, 2023 with five consulting firms in attendance. Two proposals were received on September 21, 2023. The District's proposal evaluation committee selected Sherwood Design Engineers as the most qualified, with their proposal at a fair and reasonable price, and therefore best suited for the project based on their response to the RFQP.

Consultant	Proposed Fee
BKF	\$94,224
Sherwood Engineers	\$99,690

FISCAL IMPACT

The FY24 adopted budget includes \$761,000 for the Bear Creek Redwoods - Parking Lot Culvert project #35032. There are sufficient funds in the project budget to cover the recommended action and expenditures through the end of the fiscal year. Funding for future years will be requested as part of the annual Budget and Action Plan process.

Bear Creek Redwoods - Parking Lot Culvert #35032	Prior Year Actuals	FY24 Adopted	FY25 Projected	FY26 Projected	Estimated Future Years	TOTAL
Total Budget (fund 40):	\$0	\$761,000	\$761,000	\$0	\$0	\$1,522,000
Spent-to-Date (as of 10/03/23):	\$0	\$0	\$0	\$0	\$0	\$0
Encumbrances:	\$0	\$0	\$0	\$0	\$0	\$0
Sherwood Design Engineers Contract:	\$0	(\$61,030)	(\$38,660)	\$0	\$0	(\$99,690)
10% Contingency:	\$0	\$0	(\$9,969)	\$0	\$0	(\$9,969)
Budget Remaining (Proposed):	\$0	\$699,970	\$712,371	\$0	\$0	\$1,412,341

The recommended action is not funded by Measure AA.

PRIOR BOARD AND COMMITTEE REVIEW

- May 11, 2016: Award of Contract with Harris Design for design, engineering, permitting assistance for Alma College Parking Area and new Preserve Entrance at Bear Creek Redwoods Open Space Preserve ([R-16-49](#), [Meeting Minutes](#))
- April 26, 2017: Contract amendment with Harris Design for additional scope items, including Webb Creek Culvert and Trail Undercrossing and Upper Lake Spillway Connection to Webb Creek Culvert, an optional task to complete the design and construction documents for the replacement of the lower section of Webb Creek Culvert, if deemed necessary ([R-17-52](#), [Meeting Minutes](#))
- January 25, 2017: Certification of the Final Environmental Impact Report and approval of the Bear Creek Redwoods Preserve Plan ([R-17-15](#), [Meeting Minutes](#))
- October 25, 2017: Approval of the Alma College Parking Area and Trail Crossing Project Design ([R-17-117](#), [Meeting Minutes](#))

PUBLIC NOTICE

Public notice was provided as required by the Brown Act.

CEQA COMPLIANCE

The award of a contract for design and engineering services is not a project subject to the California Environmental Quality Act (CEQA). Potential environmental effects of the proposed project will be evaluated pursuant to CEQA prior to an award of contract for construction of the project.

NEXT STEPS

Upon Board authorization, the General Manager will execute a contract with Sherwood Design Engineers to initiate engineering and design work.

Attachments

1. Area Map
2. Site Plan

Responsible Department Head:

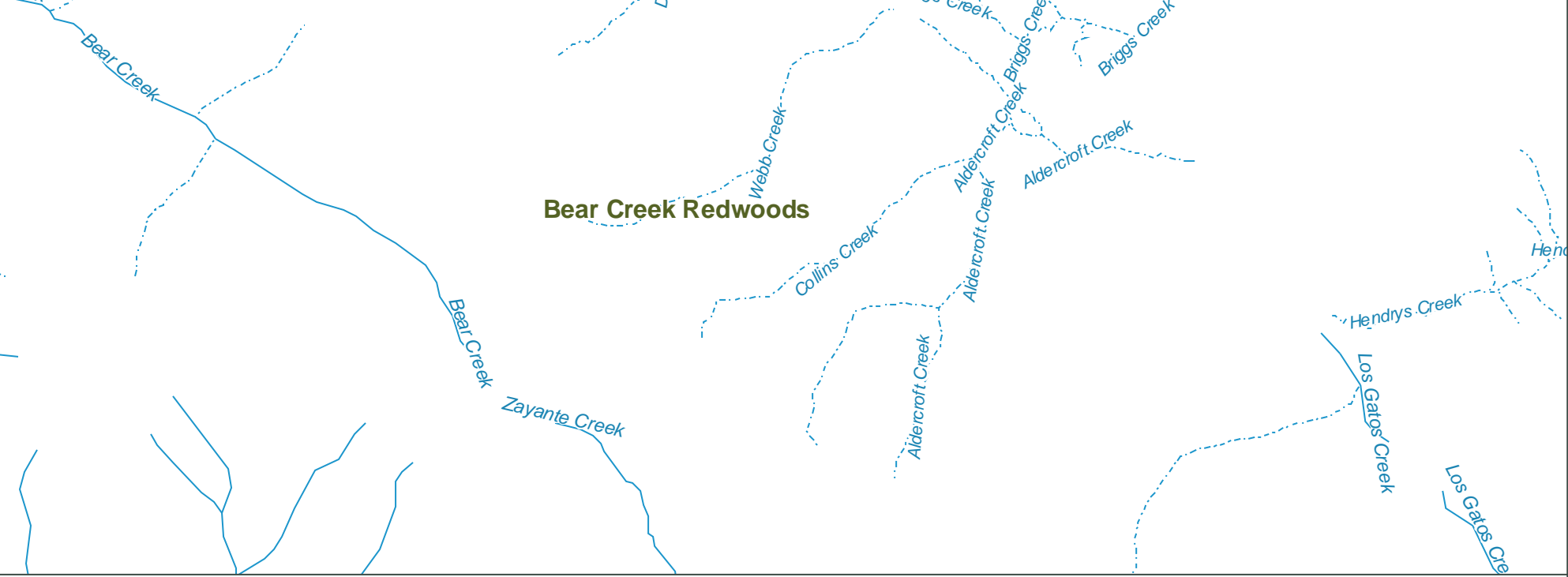
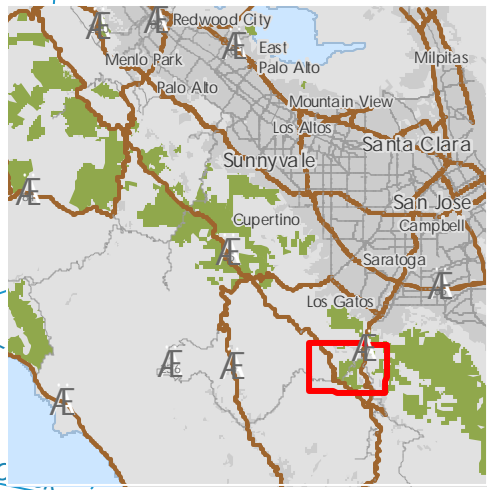
Jason Lin, Engineering and Construction Department Manager

Prepared by:


Ivana Yeung, Capital Project Manager III, Engineering and Construction Department

Contact person:

Ivana Yeung, Capital Project Manager III, Engineering and Construction Department



Attachment 1 - Area Map

 Preserve Boundary (fill)

Midpeninsula Regional
Open Space District
(MROSD)
10/9/2023



Data Source(s): Esri, Airbus DS, USGS, NGA, NASA, CGIAR, Robinson, NCEAS, NIS, O.S, N.M.A., Geodatasystem, Bfrawestait, GSA, Geoland, FEMA, Intermap and the GIS user community

While the District strives to use the best available digital data, these data do not represent a legal survey and are merely a graphic illustration of geographic features.

ATTACHMENT 2

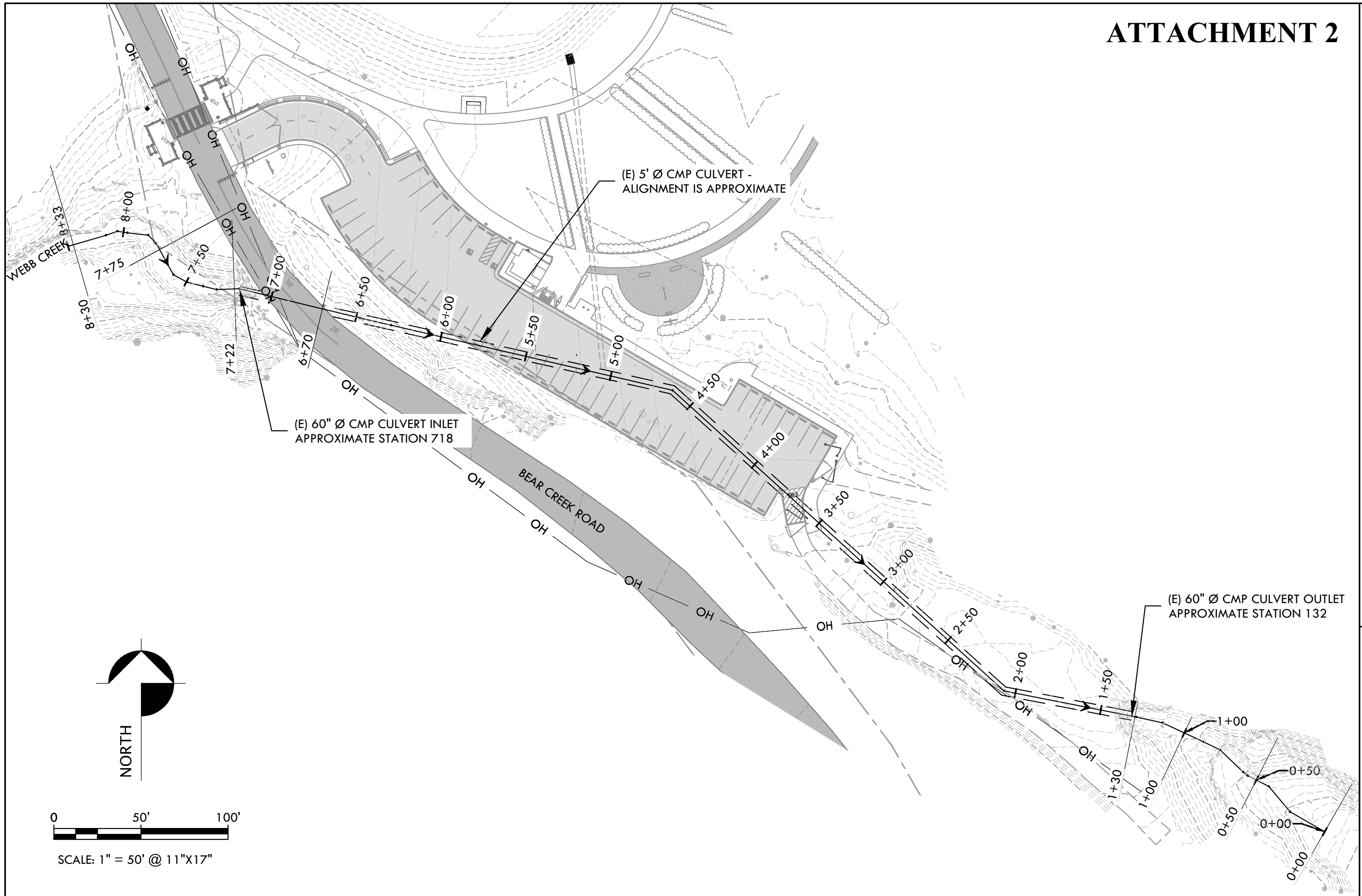


FIGURE A1:
EXISTING HEC-RAS MODEL CROSS-SECTIONS