



Midpeninsula Regional
Open Space District

R-23-124
Meeting 23-30
October 25, 2023

AGENDA ITEM 7

AGENDA ITEM

Award of Contract with Questa Engineering Corporation for Engineering and Design Services for the Paulin Crossing and Slide Repair Project in La Honda Creek Open Space Preserve

GENERAL MANAGER'S RECOMMENDATIONS

1. Authorize the General Manager to enter into a multi-year professional services contract with Questa Engineering Corporation to complete the design, engineering, permitting, and construction oversight for the Paulin Crossing and Slide Repair Project for a base contract amount not-to-exceed \$150,000.
2. Authorize a 10% contingency of \$15,000 to be reserved for unanticipated issues, bringing the total not-to-exceed contract amount to \$165,000.

SUMMARY

The Midpeninsula Regional Open Space District (District) requires assistance from a qualified engineering team to complete engineering and design documents for the Paulin Crossing and Slide Repair Project in La Honda Creek Open Space Preserve. A Request for Qualifications and Proposal (RFQP) was issued on August 2, 2023. The General Manager recommends awarding an engineering and design services contract to Questa Engineering Corporation (Questa) for a base not-to-exceed contract amount of \$150,000 and authorizing a 10% contingency in the amount of \$15,000 for a total not-to-exceed contract amount of \$165,000. The contract scope includes design, local permitting, and construction oversight for the installation of a vehicle bridge and drainage improvements/stability repairs, including a potential engineered retaining wall, in Upper La Honda Creek Open Space Preserve. There is partial funding in the adopted Fiscal Year 2023-24 (FY24) budget to cover the recommended action and expenditures through the end of the fiscal year; a budget adjustment may be necessary to cover the full expenditures anticipated through the end of June 30, 2024. Funding for future year budgets will be requested as part of the annual Budget and Action Plan process.

DISCUSSION

A qualified consulting firm is needed to provide professional engineering and design services for the removal of the Paulin Culvert, installation of a new La Honda Creek vehicle bridge to replace the culvert, and repairs, including a potential engineered retaining wall, to address landslide and stability issues affecting a patrol and maintenance road (Allen Road) in upper La Honda Creek Open Space Preserve.

The Project site is located on an unpaved patrol and maintenance road within a currently publicly closed area of the preserve off Skyline Boulevard (Hwy 35) near the intersection of Highway 84 (refer to Attachments 1 and 2 for area and site maps). The road provides the only direct and available operational access to the preserve from Skyline Boulevard.

The existing Paulin Culvert spans the width of the access road, crossing an upper stretch of La Honda Creek. The Paulin Culvert consists of one 48-inch diameter and two 18-inch diameter culverts. The up and downstream sides of the existing Paulin Culvert consist of 11-foot-high concrete headwalls, which also retain the road surface, acting as a bridge over the culverts and La Honda Creek. The concrete headwall on the downstream side is undercut in several places and leaning, indicating a high likelihood of failure in the future. Additionally, the existing Paulin Culvert is undersized for a 100-year flow event. In order to repair the crossing, the existing headwalls will need to be completely removed and the creek channel opened up. With the walls and existing Paulin Culvert removed, a vehicle bridge is the most appropriate repair approach, allowing for the new construction to be set beyond the creek banks and for the creek channel to widen.

During the winter storms of 2022-23, an existing slide along the access road adjacent to La Honda Creek located approximately 400 feet upstream of the Paulin Culvert experienced significant scouring and additional earth movement. The road is still passable but will need to be stabilized and re-widened to road-width to ensure its viability for operational access. An engineered retaining wall may be needed to support the road at this location, although alternatives will also be evaluated. A slide repair project for this location is included in the CIAP and originally scheduled to begin in FY26; however, for economy of scale, this repair is being combined with the Paulin Culvert work given the proximity and similar design and permitting requirements for each.

Contract Scope of Work:

- Review existing information and site investigations. Review Road and Trail Inventory, La Honda Creek Master Plan, and existing site conditions. Conduct site survey, hydrologic and hydraulic analysis, and geotechnical investigation. Prepare basis of design memo.
- Develop repair plans, specifications, and storm water pollution prevention plan (SWPPP): Prepare design documents to adequately permit the repairs through San Mateo County's Planning and Building departments.
- Provide construction oversight and necessary consultation during project implementation to ensure technical consistency with the project plans.

The District is separately soliciting proposals for an environmental consultant to provide environmental services, including, but not limited to: botanical, biological and cultural surveys, preparation of riparian and wetland delineations, preparation of mitigation revegetation plans, and leading the environmental regulatory permit process.

Consultant Selection

On August 2, 2023, a Request for Qualifications and Proposals (RFQP) was released on Periscope for the Paulin Crossing and Slide Repair Project. Staff conducted a mandatory pre-proposal site tour on August 9 with four consulting firms represented. Two proposals were received by the deadline of August 23. The District reviewed and ranked the proposals with

Questa deemed as the most qualified, at a fair and reasonable price, and best suited for the project based on their response to the RFQP.

Consultant	Proposed Fee
Questa Engineering Corporation	\$150,000
BKF Engineers	\$310,770

FISCAL IMPACT

This contract includes both Fund 30 Measure AA and Fund 40 General Fund capital expenditures.

The adopted FY24 budget does not include funding to cover the work for the Allen Road Washout Repair project #35039 as it was not anticipated to start until FY26; a budget adjustment accelerating funds from FY26 is anticipated. Funding for future years budgets will be requested as part of the annual Budget and Action Plan process.

Allen Road Washout Repair #35039	Prior Year Actuals	FY24 Adopted	FY25 Projected	FY26 Projected	Estimated Future Years	TOTAL
Total Budget (Fund 40):	\$0	\$0	\$0	\$60,000	\$110,000	\$170,000
Spent-to-Date (as of 09/25/23):	\$0	\$0	\$0	\$0	\$0	\$0
Encumbrances:	\$0	\$0	\$0	\$0	\$0	\$0
Questa Engineering Corporation Contract:	\$0	(\$15,000)	(\$3,000)	(\$12,000)	\$0	(\$30,000)
10% Contingency:	\$0	(\$1,500)	(\$300)	(\$1,200)	\$0	(\$3,000)
Budget Remaining (Proposed):	\$0	(\$16,500)	(\$3,300)	\$46,800	\$110,000	\$137,000

The recommended action for the Allen Road Washout Repair project is not funded by Measure AA.

The FY24 adopted budget includes \$168,556 for the Paulin Culvert/Bridge Improvements project MAA05-012. There are sufficient funds in the project budget to cover the recommended action and expenditures through the end of the fiscal year. Funding for future years budgets will be requested as part of the annual Budget and Action Plan process.

Paulin Culvert/Bridge Improvements MAA05-012	Prior Year Actuals	FY24 Adopted	FY25 Projected	FY26 Projected	Estimated Future Years	TOTAL
Total Budget (Fund 30):	\$4,883	\$168,556	\$63,194	\$12,737	\$0	\$249,370
Spent-to-Date (as of 09/25/23):	(\$4,883)	(\$5,354)	\$0	\$0	\$0	(\$10,237)
Encumbrances:	\$0	\$0	\$0	\$0	\$0	\$0
Questa Engineering Corporation Contract:	\$0	(\$60,000)	(\$12,000)	(\$48,000)	\$0	(\$120,000)
10% Contingency:	\$0	(\$6,000)	(\$1,200)	(\$4,800)	\$0	(\$12,000)

Budget Remaining (Proposed):	\$0	\$97,202	\$49,994	(\$40,063)	\$0	\$107,133
-------------------------------------	------------	-----------------	-----------------	-------------------	------------	------------------

The following table outlines the Measure AA Portfolio 05 La Honda Creek - Upper Area Recreation, Habitat Restoration and Conservation Grazing Projects allocation, costs-to-date, projected future project expenditures and projected portfolio balance remaining.

MAA05 La Honda Creek—Upper Area Recreation, Habitat Restoration and Conservation Grazing Projects Portfolio Allocation:	
Total Portfolio Allocation:	\$11,733,000
Life-to-Date Spent (as of 09/25/23):	(\$3,376,659)
Encumbrances:	(\$728,055)
Remaining FY24 Project Budgets:	(\$1,312,571)
Future MAA05 project costs (projected through FY27):	(\$5,473,560)
Total Portfolio Expenditures:	(\$10,890,845)
Portfolio Balance Remaining (Proposed):	\$842,155

The following table outlines the Measure AA Portfolio 05 allocation, projected life of project expenditures and projected portfolio balance remaining.

MAA05 La Honda Creek—Upper Area Recreation, Habitat Restoration and Conservation Grazing Projects Portfolio Allocation:	
Total Portfolio Allocation:	\$11,733,000
Projected Project Expenditures (life of project):	
05-001 La Honda Creek Land Conservation Opportunities	(\$1,756,093)
05-002 Upper La Honda Creek Grazing Infrastructure	(\$297,432)
05-005 La Honda Creek Red Barn Parking Area and Easy Access Trail	(\$327,513)
05-007 La Honda Creek Phase II Trail Connection	(\$931,545)
05-008 La Honda Creek White Barn Structural Rehabilitation	(\$517,542)
05-009 La Honda Creek Redwood Cabin Removal and Site Restoration	(\$490,723)
05-010 Restoration Forestry Demonstration Project	(\$1,444,833)
05-011 Lone Madrone Ranch Fence Installation	(\$194,614)
05-012 Paulin Culvert/Bridge Improvements	(\$249,370)
05-013 La Honda Parking and Trailhead Access – Implementation	(\$3,597,875)
05-014 Lone Madrone Corrals	(\$57,000)
05-015 Upper La Honda Creek Land Conservation (Eberhard)	(\$1,026,305)
Total Portfolio Expenditures:	(\$10,890,845)
Portfolio Balance Remaining (Proposed):	\$842,155

PRIOR BOARD AND COMMITTEE REVIEW

August 22, 2012: The Board certified the Mitigated Negative Declaration and approved the La Honda Creek Master Plan. ([R-12-83](#), [Meeting Minutes](#))

PUBLIC NOTICE

Public notice was provided as required by the Brown Act.

CEQA COMPLIANCE

Award of a contract for design and engineering services is not a project subject to the California Environmental Quality Act (CEQA).

Potential environmental impacts of the Project were analyzed in the Initial Study/Mitigated Negative Declaration for the La Honda Creek Master Plan, adopted by the Board in August 2012, and will be reviewed and confirmed prior to the award of contract for construction of the project.

NEXT STEPS

Upon Board authorization, the General Manager will direct staff to enter into contract with Questa to initiate engineering and design work.

Attachments

1. Area Map
2. Site Map

Responsible Department Head:

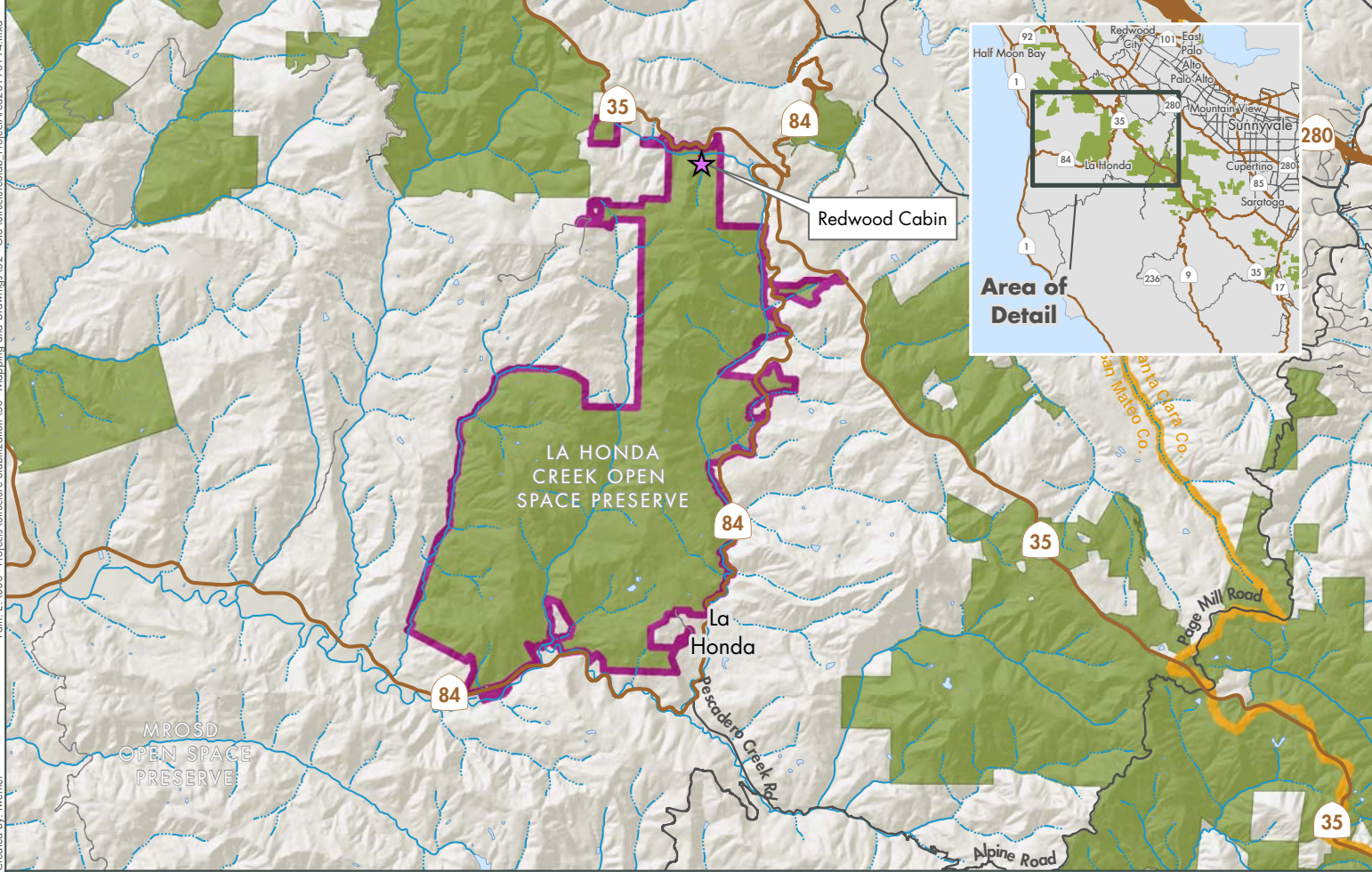
Jason Lin, Engineering and Construction Department Manager

Prepared by:


Leigh Guggemos, Capital Project Manager III, Engineering and Construction Department

Contact person:

Leigh Guggemos, Capital Project Manager III, Engineering and Construction Department



ATTACHMENT 1 - Area Map

-  MROSD Preserves
-  Paulin Crossing and Slide Repair
-  County Boundary

Midpeninsula Regional
Open Space District
(MROSD)
January 2019





Attachment 2 - Site Map

- | | | |
|------------------------------------------------------------------------------------------------------|-------------------------------------------------------------------------------------------------------------|-----------------------------------------------------------------------------------------------------|
|  Midpen preserve |  Gate |  Parcel boundary |
|  Private property |  Unpaved all-season road |  Scenic corridor |
|  Building |  Unpaved seasonal road | |

Midpeninsula Regional
Open Space District
(Midpen)
10/13/2023

