



Midpeninsula Regional
Open Space District

PROCUREMENT AGENDA ITEM

R-26-68
Meeting 26-14
May 13, 2026

AGENDA ITEM 9

AGENDA ITEM

Reject All Bids for the Paulin Bridge and Slide Repair Project in La Honda Creek Open Space Preserve

GENERAL MANAGER'S RECOMMENDATIONS

1. Reject all bids received for the Paulin Bridge and Slide Repair Project in La Honda Creek Open Space Preserve.
2. Authorize the General Manager to re-solicit bids.

DISCUSSION

The purpose of the Paulin Bridge and Slide Repair Project is to provide construction services for the removal of an existing dilapidated culvert creek crossing, installation of a prefabricated steel vehicle bridge, creek channel grading, and slope stabilization within La Honda Creek (LHC) Open Space Preserve (Preserve). The project will provide improved passage for maintenance and patrol vehicles along La Honda Creek in a currently closed portion of the Preserve. The scope of work includes the demolition and removal of concrete headwalls, metal culverts, and fill; tree removal; temporary dewatering; installation of concrete abutments, drilled piers, and a prefabricated steel bridge; creek channel grading; bank stabilization; site grading; and slide repair.

Midpeninsula Regional Open Space District (District) staff issued a Request for Bids (RFB) on March 20, 2026 and received four (4) bids on April 16, 2026. As discussed in more detail below, all bids came in higher than the engineer's estimate. In addition, during the bidding period, the specified bridge manufacturer notified the District that it is currently experiencing significant delays in steel procurement, and the bridge likely could not be fabricated and delivered in time to meet the construction deadline of October 15. Therefore, construction would need to be split across two seasons, requiring winterization of the site and a remobilization of the contractor in the Summer of 2027. This likely would result in a substantial change order cost and increase risks to the work in progress through the winter. Because bids were significantly higher than the engineer's estimate and the bridge likely cannot be delivered on time to meet this Summer's construction window, the General Manager recommends rejecting all bids and re-soliciting the work in the future. The project would be re-bid in the Fall of 2026, with construction taking place in the Summer and Fall of 2027. This revised schedule will allow the work to take place during one construction season and provide more lead time for fabrication and delivery of the bridge.

BUDGET / FISCAL IMPACT

None

PROCUREMENT PROCESS AND SELECTION

A Request for Bids (RFB) was issued on March 20, 2026 via BidNet, legal notices were posted in the newspaper, and a link to the solicitation was posted on the District website. Two mandatory pre-bid site walks were held on March 26, 2026, and April 2, 2026, with seven (7) total contractors in attendance.

The District publicly opened the bids on April 16, 2026. Below is a list of all bids received:

Base Bid Analysis

Bidder	Location	Total Base Bid	Percent Difference from Cost Estimate of \$750,000
Altor Construction, LLC	San Francisco, CA	\$838,548.00	+12%
Joseph J Albanese, Inc	Santa Clara, CA	\$1,042,472.00	+39%
LVI Engineering, Inc	San Rafael, CA	\$1,092,470.00	+46%
Graniterock Co.	San Jose, CA	\$1,210,876.00	+61%

Bid Alternate Analysis

Bidder	Location	Total Bid Alternate
Altor Construction, LLC	San Francisco, CA	\$219,865.00
Joseph J Albanese, Inc	Santa Clara, CA	\$557,434.00
LVI Engineering, Inc	San Rafael, CA	\$351,925.00
Graniterock Co.	San Jose, CA	\$529,798.00

Following the bid opening, the District received a timely bid protest from Joseph J Albanese, Inc., (JJ Albanese) on April 22, 2026. The protest contends that Altor Construction LLC's (Altor) bid should be rejected as nonresponsive and the Project should be awarded to JJ Albanese as the second lowest bidder. In accordance with the Project bid package, the District forwarded the bid protest to Altor and offered them a chance to respond. Altor provided a response to the bid protest on April 24, 2026. The bid package vests responsibility in the Assistant General Manager to issue a determination on bid protests. The Assistant General Manager has not yet issued a determination on the protest, because if the Board accepts the General Manager's recommendation, the bid protest will be moot.

PRIOR BOARD ACTION SUPPORTING THE PROJECT

- August 22, 2012: The Board certified the Mitigated Negative Declaration and approved the La Honda Creek Master Plan. ([R-12-83](#), [Meeting Minutes](#))

- October 25, 2023: Award of Contract with Questa Engineering Corporation for Engineering and Design Services for the Paulin Crossing and Slide Repair Project. ([R-12-124](#), [Meeting Minutes](#))

PUBLIC NOTICE

Public notice was provided as required by the Brown Act.

CEQA COMPLIANCE

The proposed Project is consistent with the Mitigated Negative Declaration and approved the La Honda Creek Master Plan, which the Board certified on August 22, 2012.

NEXT STEPS

Upon approval by the Board of Directors, the General Manager will reject all bids and re-bid the Project, expecting to return to the Board with consideration of an award of contract in Winter 2026/2027.

Attachment

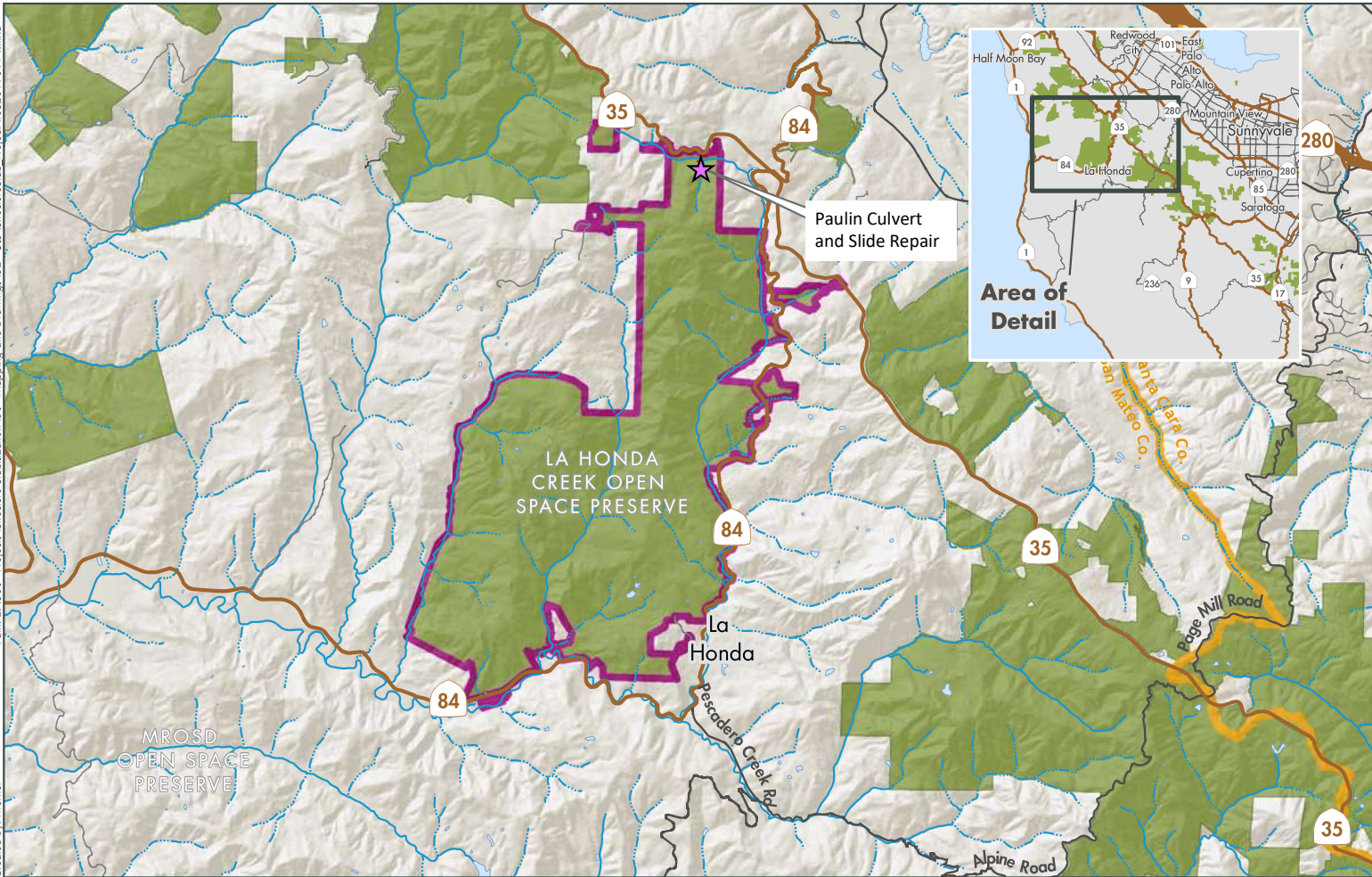
1. Attachment 1 - Project Area Map
2. Attachment 2 – Project Site Map

Responsible Department Head:

Scott Reeves, Engineering and Construction Manager

Prepared by / Contact person:

Leigh Guggemos, Capital Project Manager III, Engineering and Construction Department



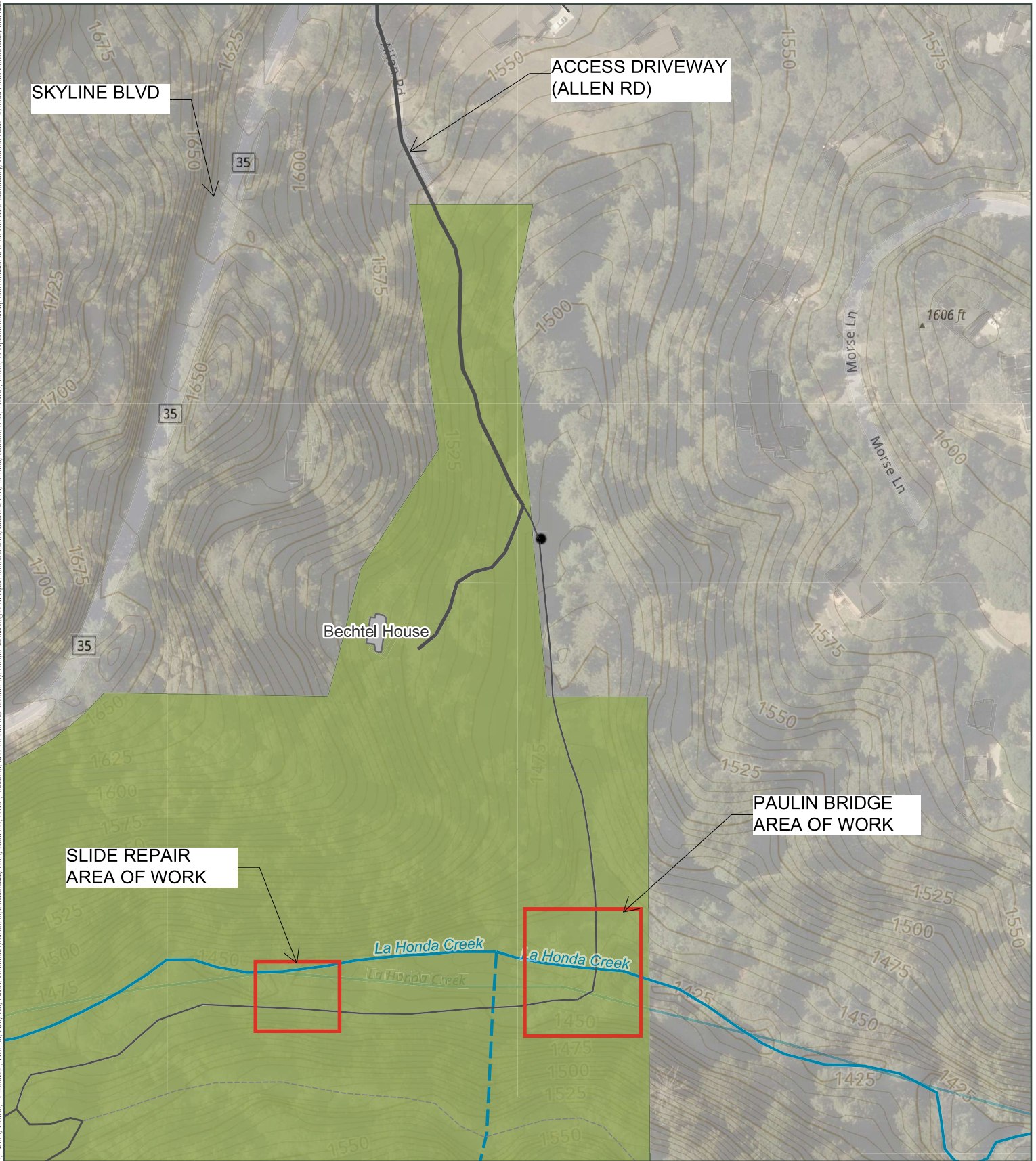
ATTACHMENT 1 - Area Map

- MROSD Preserves
- Paulin Crossing and Slide Repair
- County Boundary

Midpeninsula Regional
Open Space District
(MROSD)
January 2019



Date Source(s): Sources: Esri, Vantor, Aribor DS, USGS, NGA, NASA, CGIAR, N Robinson, NCEAS, NIS, OS, NMA, GeoDataHydrium, Rijkswaterstaat, GSA, Geoland, FEMA, Intermap, and the GIS user community, Midpeninsula Regional Open Space District, Sources: Esri, TomTom, Garmin, FCO, NOAA, USGS, © OpenStreetMap contributors, and the GIS User Community, Golden Gate National Parks Conservancy and San Mateo



SKYLINE BLVD

ACCESS DRIVEWAY (ALLEN RD)

Bechtel House

SLIDE REPAIR AREA OF WORK

PAULIN BRIDGE AREA OF WORK

La Honda Creek

La Honda Creek

Attachment 2 - Site Map

- | | |
|--------------------|-------------------------------------|
| Stream | Trail |
| — Perennial | — Unpaved All-Season Road |
| - - - Intermittent | — Unpaved Seasonal Road |
| Landmark | - - - Abandoned / Unmaintained Road |
| ● Other Landmark | Preserve Boundary |
| Building | — Contour Line (5-ft) |
| ■ Present | |

Midpeninsula Regional
Open Space District
4/23/2026

