



Midpeninsula Regional
Open Space District

PROCUREMENT AGENDA ITEM

R-26-97
Meeting 26-17
June 24, 2026

AGENDA ITEM 9

AGENDA ITEM

Contract Amendment with MIG, Inc., for Environmental Services to complete the Paulin Bridge and Slide Repair Project in La Honda Creek Open Space Preserve

GENERAL MANAGER'S RECOMMENDATION

Authorize the General Manager to execute a contract amendment with MIG, Inc., of San Jose, California, to provide additional permitting support and biological compliance, surveying, and monitoring for the Paulin Bridge and Slide Repair Project in the amount of \$147,840, resulting in a not-to-exceed total of \$197,207.

DISCUSSION

On November 27, 2023, under the General Manager's authority, the Midpeninsula Regional Open Space District (District) entered into a multi-year agreement with MIG, Inc. (MIG), in the amount of \$49,367 to provide environmental and biological services for the Paulin Crossing and Slide Repair Project (Project) located in La Honda Creek Open Space Preserve. The initial contract with MIG included the biological compliance and monitoring services as an optional future task with pricing to be provided once the biological compliance requirements were identified through the regulatory permitting process with the California Department of Fish and Wildlife (CDFW), Regional Water Quality Control Board (Water Board), and US Army Corp of Engineers (USACE). The District and MIG are in final negotiations with the regulatory agencies to secure the individual permits required for the Project, with draft agreements in place. Due to the presence of sensitive resources within the Project area, which is located within a redwood forest and includes in-channel work within the upper reaches of La Honda Creek, substantial biological protection measures are required. The proposed contract amendment covers the scope of work to fulfill these protection measures and includes additional permit coordination support to finalize the permits with the regulatory agencies.

BUDGET / FISCAL IMPACT

The 2027 fiscal year budget for projects **MAA05-012: Phase 2 Paulin Bridge** and **35039: Allen Road Washout Repair** contains:

- sufficient funds.
- insufficient funds; the next quarterly budget update will include a reallocation of unspent funds from other budgets to cover for this expenditure.

- insufficient funds; approval of this item requires a fiscal year budget augmentation.
- future fiscal year budgets will include additional funds to complete the contracted work.

Measure AA

- No, this contract is not part of a Measure AA project.
- Yes, a portion of this contract is part of a Measure AA project (Paulin Bridge). The slide repair is funded by Fund 40.

The following table outlines the Measure AA Portfolio 5: La Honda Creek—Upper Area Recreation, Habitat Restoration and Conservation Grazing Projects allocation, costs-to-date, projected life-to-date project expenditures, and projected portfolio balance remaining. This Measure AA portfolio contains an unfunded amount anticipated to be supported through a combination of future portfolio reallocation requests, grants, partnership funding, interest income allocations, and Fund 40 General Fund Capital monies.

Measure AA Portfolio 05: La Honda Creek—Upper Area Recreation, Habitat Restoration and Conservation Grazing Projects	
Portfolio Allocation:	\$11,733,000
Grant Income (through FY29):	\$1,000,000
Total Portfolio Allocation:	\$12,733,000
05-001 La Honda Creek Land Conservation Opportunities	(\$1,756,093)
05-002 Upper La Honda Creek Grazing Infrastructure	(\$297,432)
05-005 La Honda Creek Red Barn Parking Area and Easy Access Trail	(\$327,514)
05-007 La Honda Creek Trail Connections	(\$1,461,861)
05-008 La Honda Creek White Barn Structural Rehabilitation	(\$705,117)
05-009 La Honda Creek Redwood Cabin Removal and Site Restoration	(\$488,846)
05-010 La Honda Forest Health	(\$2,311,036)
05-011 Lone Madrone Ranch Fence Installation	(\$287,348)
05-012 Paulin Culvert/Bridge Improvements	(\$887,837)
05-013 La Honda Parking and Trailhead Access Implementation	(\$9,893,369)
05-014 Lone Madrone Corrals	(\$324,000)
05-015 Upper La Honda Creek Land Acquisition (Eberhard)	(\$1,026,358)
05-016 Lone Madrone Perimeter Fence	(\$110,500)
05-017 Conservation Grazing Water Development	(\$306,000)
Total Projected Expenditures:	(\$20,183,311)
Proposed Portfolio Amount Remaining*:	(\$7,450,311)

**Reflects the most current projected portfolio balance remaining.*

PROCUREMENT PROCESS AND SELECTION

MIG was originally selected through a Request for Qualifications and Proposals (RFQP) process. The RFQP was issued on September 22, 2023, on the District's website and on Periscope. Staff received three (3) proposals by October 13, 2023. Staff reviewed and scored the proposals based on the firms' project approach, team expertise, and experience with similar projects within the region and determined that MIG was best qualified and has significant expertise in this type of project, and provided a fair and reasonable cost proposal. On November 27, 2023, under the General Manager's authority, the District entered into a multi-year agreement with MIG.

PRIOR BOARD ACTION SUPPORTING THE PROJECT

- August 22, 2012: The Board certified the Mitigated Negative Declaration and approved the La Honda Creek Master Plan. ([R-12-83](#), [Meeting Minutes](#))
- October 25, 2023: Award of Contract with Questa Engineering Corporation for Engineering and Design Services for the Paulin Crossing and Slide Repair Project. ([R-12-124](#), [Meeting Minutes](#))
- May 13, 2026: Reject All Bids for construction services for the Paulin Bridge and Slide Repair Project. ([R-26-68](#), [Meeting Minutes](#))

PUBLIC NOTICE

Public notice was provided as required by the Brown Act.

CEQA COMPLIANCE

An amendment to a contract is not a project subject to the California Environmental Quality Act (CEQA).

NEXT STEPS

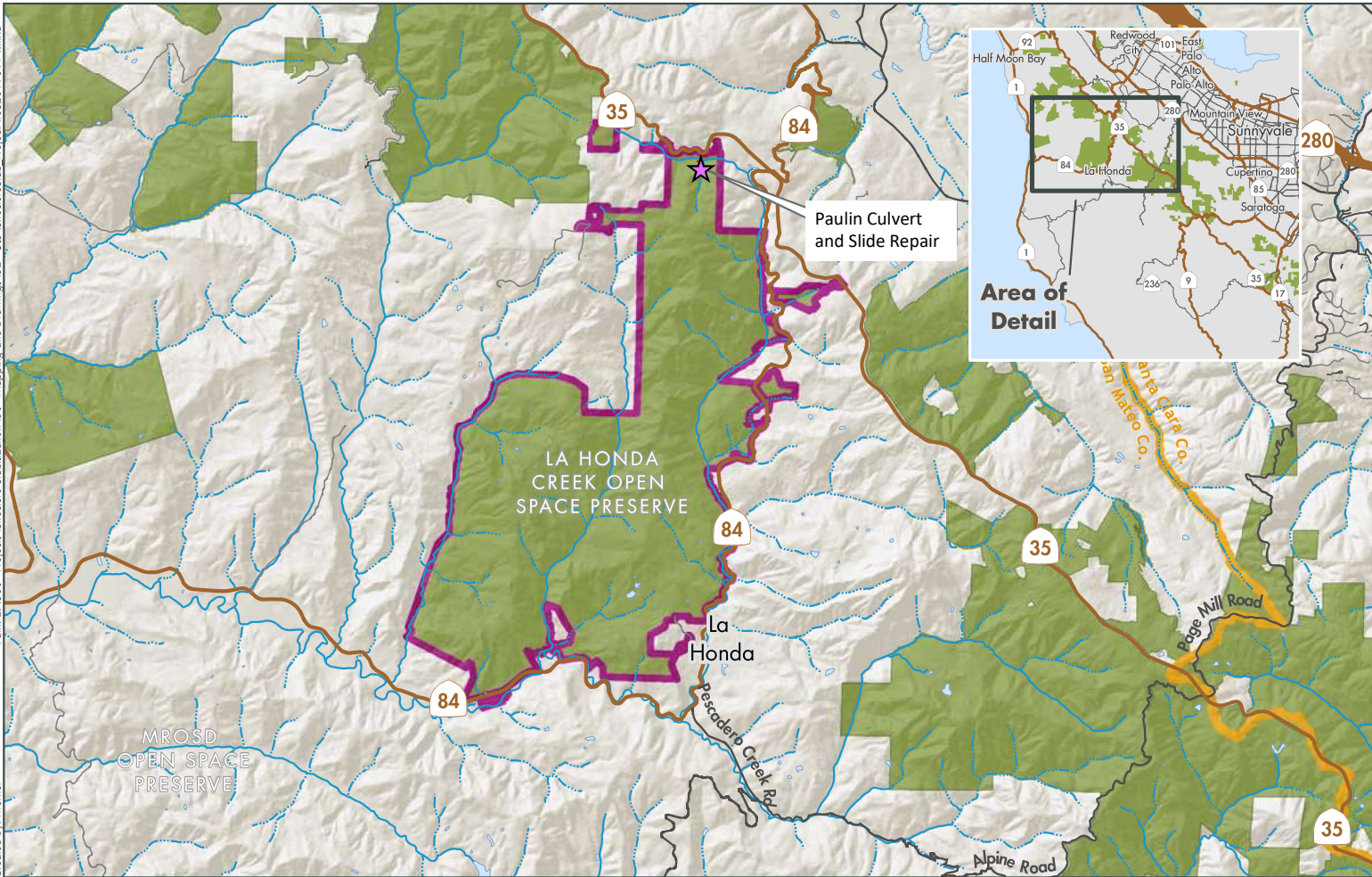
Pending Board approval, the General Manager will execute the MIG contract amendment to provide on-going permit support and biological compliance, surveying, and monitoring services. Construction is scheduled to take place in Summer and Fall of 2027 and be completed by November 2027.

Attachments

1. Attachment 1 - Project Area Map
2. Attachment 2 – Project Site Map

Responsible Department Head:
Scott Reeves, Engineering and Construction Manager

Prepared by / Contact person:
Leigh Guggemos, Capital Project Manager III, Engineering and Construction Department



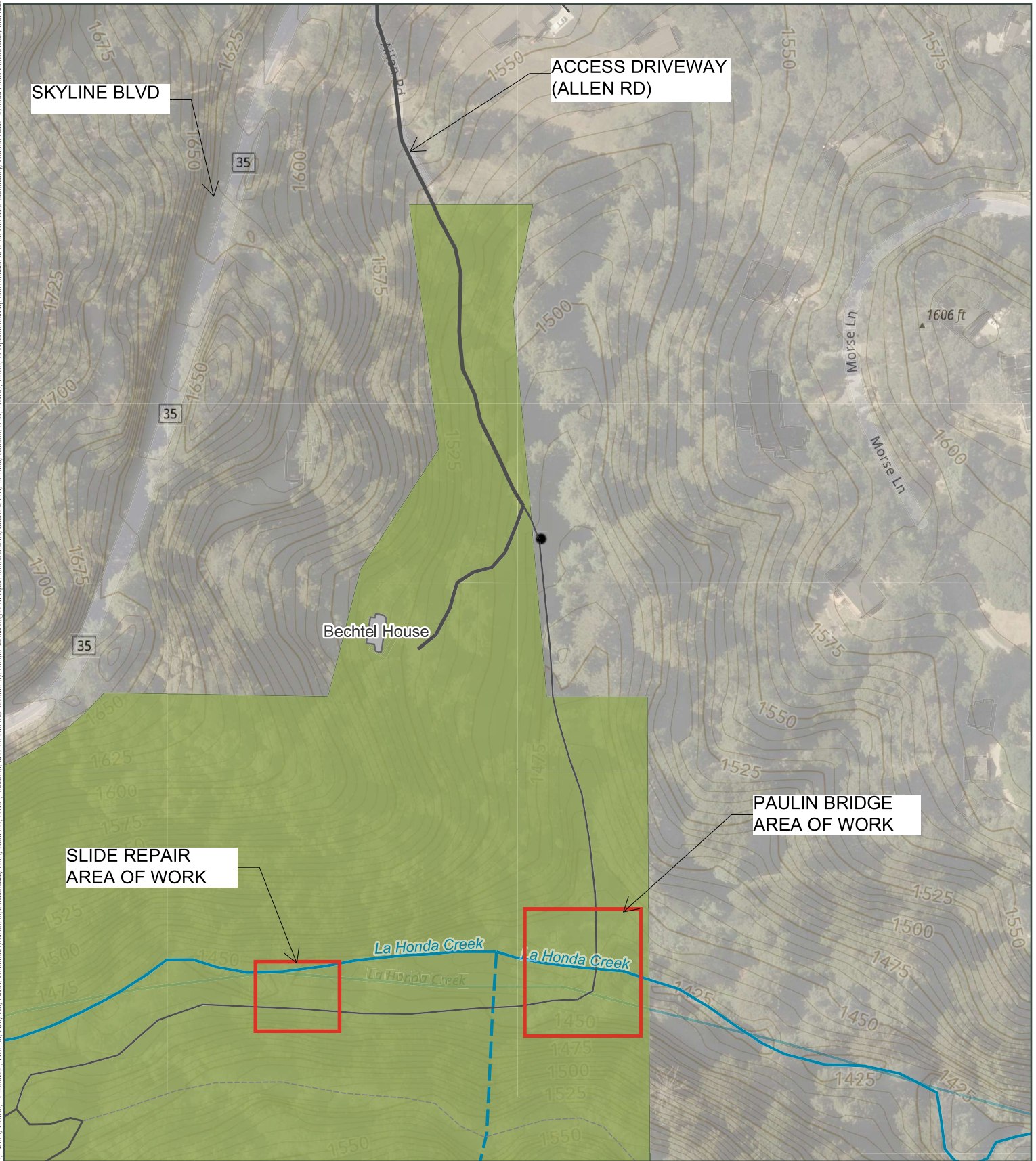
ATTACHMENT 1 - Area Map

- MROSD Preserves
- Paulin Crossing and Slide Repair
- County Boundary

Midpeninsula Regional
Open Space District
(MROSD)
January 2019



Date Source(s): Sources: Esri, Vantor, Aribor DS, USGS, NGA, NASA, CGIAR, N Robinson, NCEAS, NIS, OS, NMA, GeoDataHydrium, Rijkswaterstaat, GSA, Geoland, FEMA, Intermap, and the GIS user community, Midpeninsula Regional Open Space District, Sources: Esri, TomTom, Garmin, FCO, NOAA, USGS, © OpenStreetMap contributors, and the GIS User Community, Golden Gate National Parks Conservancy and San Mateo



Attachment 2 - Site Map

- | | |
|-----------------|-------------------------------|
| Stream | Trail |
| Perennial | Unpaved All-Season Road |
| Intermittent | Unpaved Seasonal Road |
| Landmark | Abandoned / Unmaintained Road |
| Other Landmark | Preserve Boundary |
| Building | Contour Line (5-ft) |
| Present | |

Midpeninsula Regional
Open Space District
4/23/2026

