



Midpeninsula Regional  
Open Space District

# Memorandum

DATE: January 18, 2017

MEMO TO: MROSD Board of Directors

FROM: Stephen E. Abbors, General Manager

SUBJECT: District Socio-Demographics

---

This memorandum presents current data of the District's socio-demographics and its comparison to the larger San Mateo County and Santa Clara County to understand the diversity of the population residing within District boundaries. The Diversity Ad Hoc Committee requested that this information be forwarded to the full Board of Directors as they consider the strategic goals and objectives for the upcoming fiscal year.

Attachments:

1. Summary of District Socio-Demographic Data and its Comparison with the larger San Mateo and Santa Clara Counties
2. Percentage of Overweight Youth Ages 2-11 (Weight  $\geq$  95th Percentile)
3. Compilation of Census Data Maps (note: data is shown per census tract):
  - a. Percentage of American Indian or Alaska Native Residents
  - b. Percentage of Asian Residents
  - c. Percentage of Black or African American Residents
  - d. Percentage of Hispanic or Latino Residents
  - e. Percentage of Native Hawaiian or Other Pacific Islander Residents
  - f. Percentage of White Only Residents
  - g. Percentage of Residents of a Different Race
  - h. Percentage of Residents of Two or More Races
  - i. Simpson's Index of Diversity (accounts for diversity richness and evenness)
  - j. Median Age
  - k. Percentage Under 18 Years Old
  - l. Percentage Over 65 Years Old
  - m. Average Household Size
  - n. Percentage of Multi-Family Units
  - o. Population Density (1000s per square mile)
  - p. Median Household Income (in 1000s)
  - q. Percentage of Household Ownership
  - r. Poverty Rate
  - s. Percentage with Post-Secondary Education (over 25 years old)
  - t. Percentage of Non-English Speaking Households
  - u. Disability Rate

## Attachment 1: District Demographic Data and Comparison with San Mateo and Santa Clara Counties

		Districtwide <sup>1</sup>	San Mateo County (Entire)	Santa Clara County (Entire)
Race (%)	White Only	61.4	61.9	55.7
	Black or African American	2.2	2.9	2.9
	American Indian or Alaska Native	0.3	0.8	1.3
	Asian	26.4	28.3	35.6
	Hawaiian Islander or Other Pacific Islander	0.9	1.6	0.5
	Other Race	5.0	8.4	9.5
	Two or More Races	3.9	4.5	4.1
Ethnicity (%)	Hispanic or Latino	18.7	25.1	26.3
	Not Hispanic or Latino	81.3	74.9	73.7
Sex (%)	Male	49.9	49.2	50.2
	Female	50.1	50.8	49.8
Language Spoken at Home, Age 5+ (%)	Spanish	14.0	20.2	18.9
	Chinese	7.9	7.1	7.2
	Non-English Speaking Households (%)	43.2	46.0	51.6
	Foreign Born (%)	33.7	34.4	37.4
	At Least Some Post Secondary Education (Age 25+) (%)	81.3	71.7	71.3
	Poverty Rate (%)	7.1	7.6	9.9
	Disability Rate (%)	6.7	8.0	7.7
Housing	House Ownership (%)	58.3	59.3	57.0
	Average Household Size	2.72	2.82	2.94
	Multi-family, 2+ Units in Structure (%)	33.7	33.6	33.3
Age	Median Age <sup>2</sup> (Years)	N/A	39.4	36.6
	Under 18 Years (%)	23.5	21.2	22.8
	Over 65 Years (%)	13.6	15.0	12.5
	Median Household Income <sup>2</sup> (2014 Dollars)	N/A	\$91,421	\$93,854

Source: U.S. Census Bureau, ACS 2014 5-Year Estimate, American Fact Finder

### Notes:

1. Census tracts that fall within MROSD Boundary ( $n=160$ )
2. ACS data are reported in median numbers, therefore a single median cannot be reported across tracts

## Attachment 2

### Percentage of Overweight Youth Ages 2-11 (Weight $\geq$ 95th Percentile)

City or County	Estimate	95% Confidence Interval
Menlo Park	16.3%	9.0% - 23.5%
East Palo Alto	29.9%	19.8% - 40.1%
Palo Alto	7.6%	3.8% - 11.4%
Mountain View	9.7%	5.4% - 14.1%
San Mateo County	18.3%	12.3% - 24.3%
Santa Clara County	12.0%	7.1% - 16.9%

Source: UCLA Center for Health Policy Research,  
California Health Interview Survey

Notes: These data are city- or county-wide.



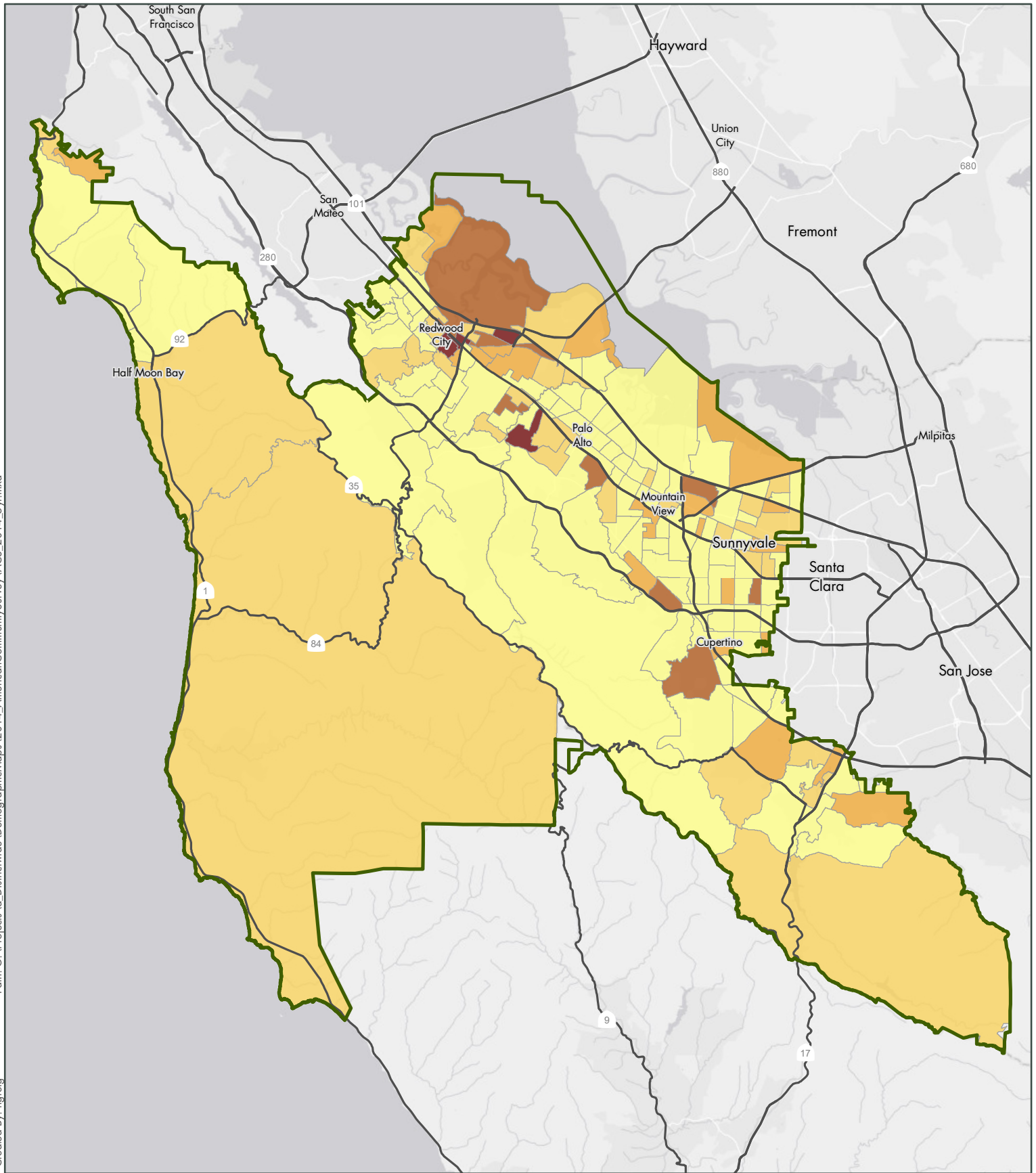
Midpeninsula Regional  
Open Space District

### **Attachment 3**

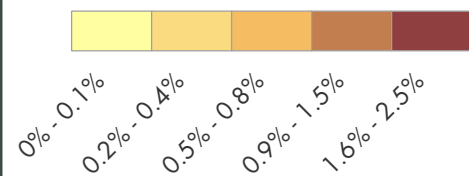
#### **Compilation of Census Data Maps (note: data is shown per census tract):**

- a. Percentage of American Indian or Alaska Native Residents
- b. Percentage of Asian Residents
- c. Percentage of Black or African American Residents
- d. Percentage of Hispanic or Latino Residents
- e. Percentage of Native Hawaiian or Other Pacific Islander Residents
- f. Percentage of White Only Residents
- g. Percentage of Residents of a Different Race
- h. Percentage of Residents of Two or More Races
- i. Simpson's Index of Diversity (accounts for diversity richness and evenness)
- j. Median Age
- k. Percentage Under 18 Years Old
- l. Percentage Over 65 Years Old
- m. Average Household Size
- n. Percentage of Multi-Family Units
- o. Population Density (1000s per square mile)
- p. Median Household Income (in 1000s)
- q. Percentage of Household Ownership
- r. Poverty Rate
- s. Percentage with Post-Secondary Education (over 25 years old)
- t. Percentage of Non-English Speaking Households
- u. Disability Rate





## American Indian or Alaska Native



Source: U.S. Census Bureau,  
ACS 2014 5-Year Estimate

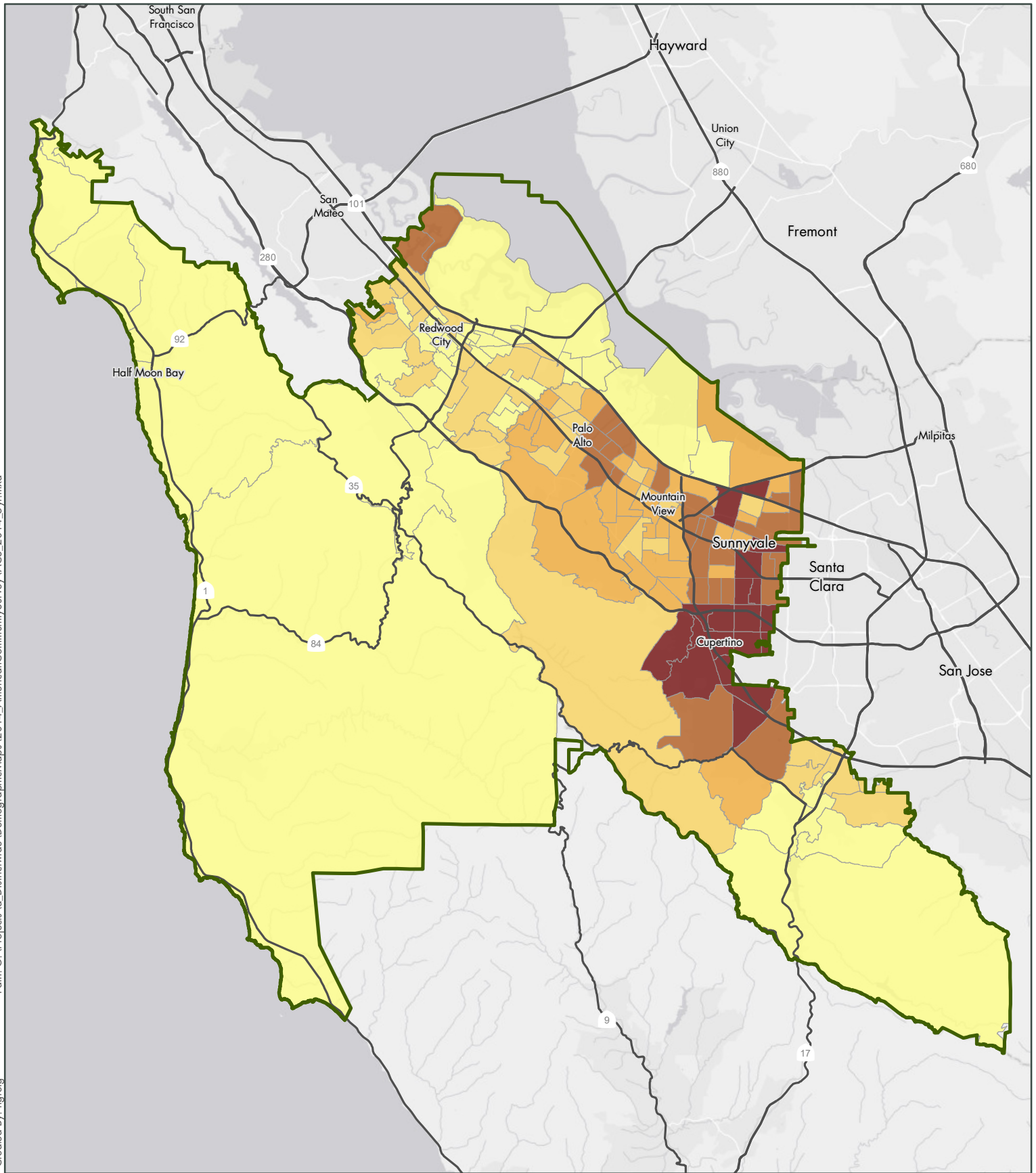


Miles 0 5 10

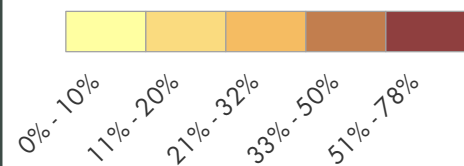
Midpeninsula Regional  
Open Space District  
(MROSD)

November 2016





## Asian



Source: U.S. Census Bureau,  
ACS 2014 5-Year Estimate

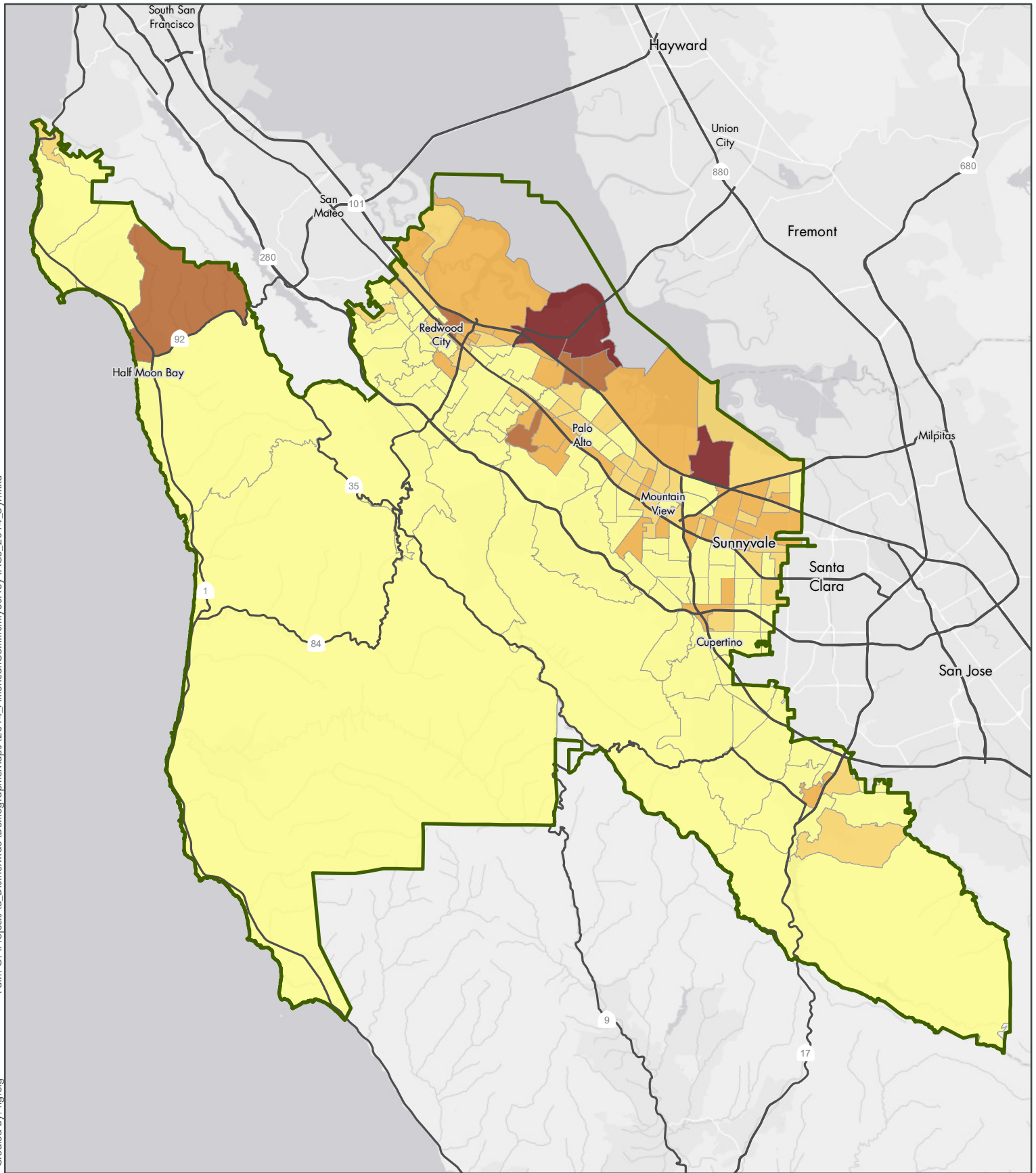


Miles 0 5 10

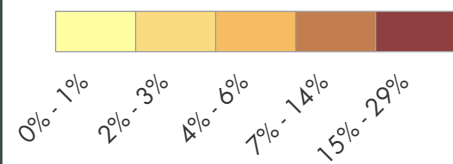
Midpeninsula Regional  
Open Space District  
(MROSD)

November 2016





### Black or African American



Source: U.S. Census Bureau,  
ACS 2014 5-Year Estimate



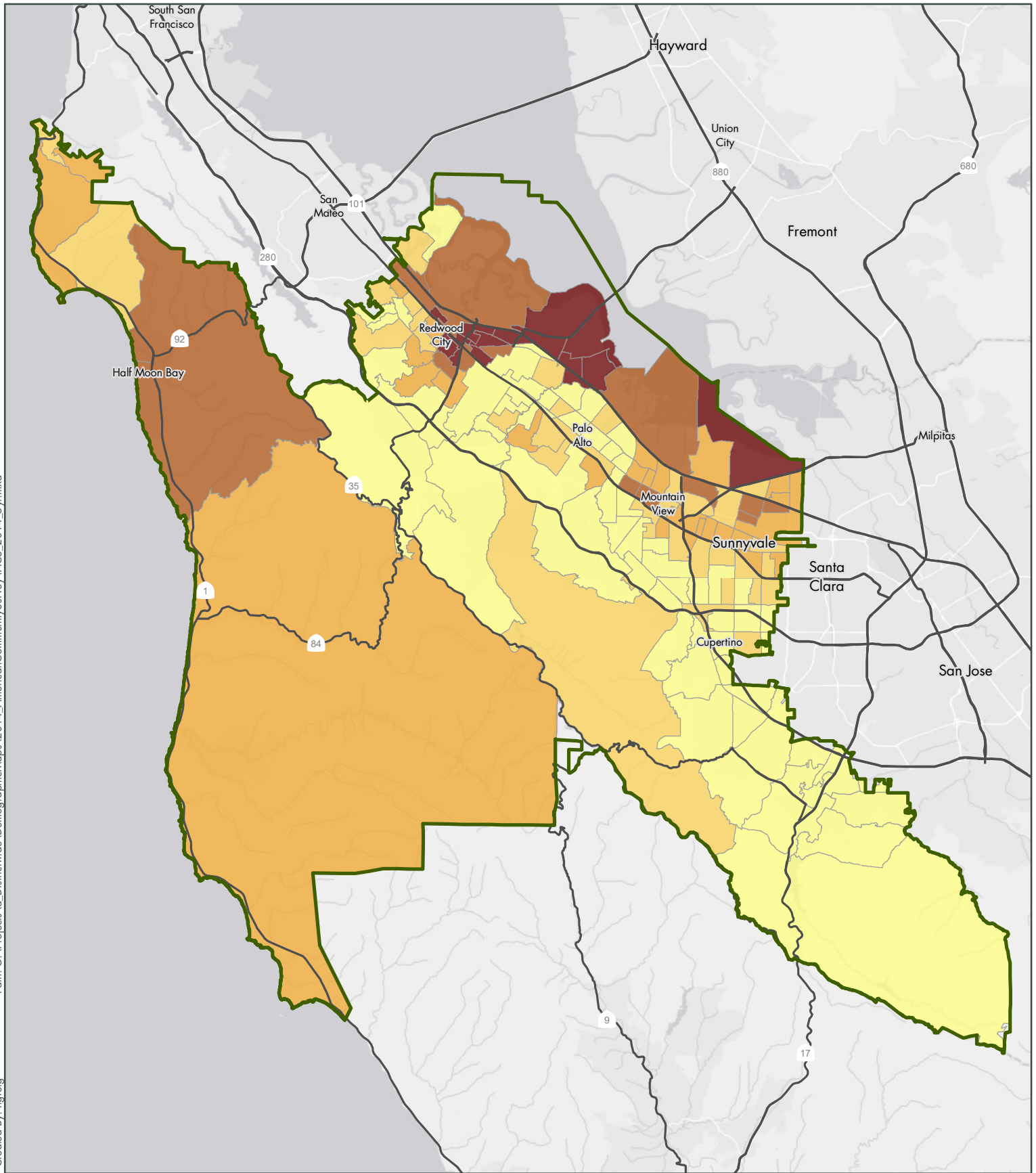
Miles 0 5 10

Midpeninsula Regional  
Open Space District  
(MROSD)

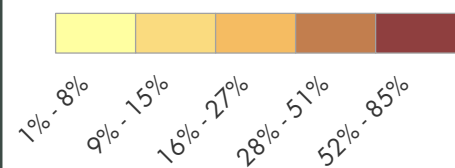
November 2016







## Hispanic or Latino



Source: U.S. Census Bureau,  
ACS 2014 5-Year Estimate

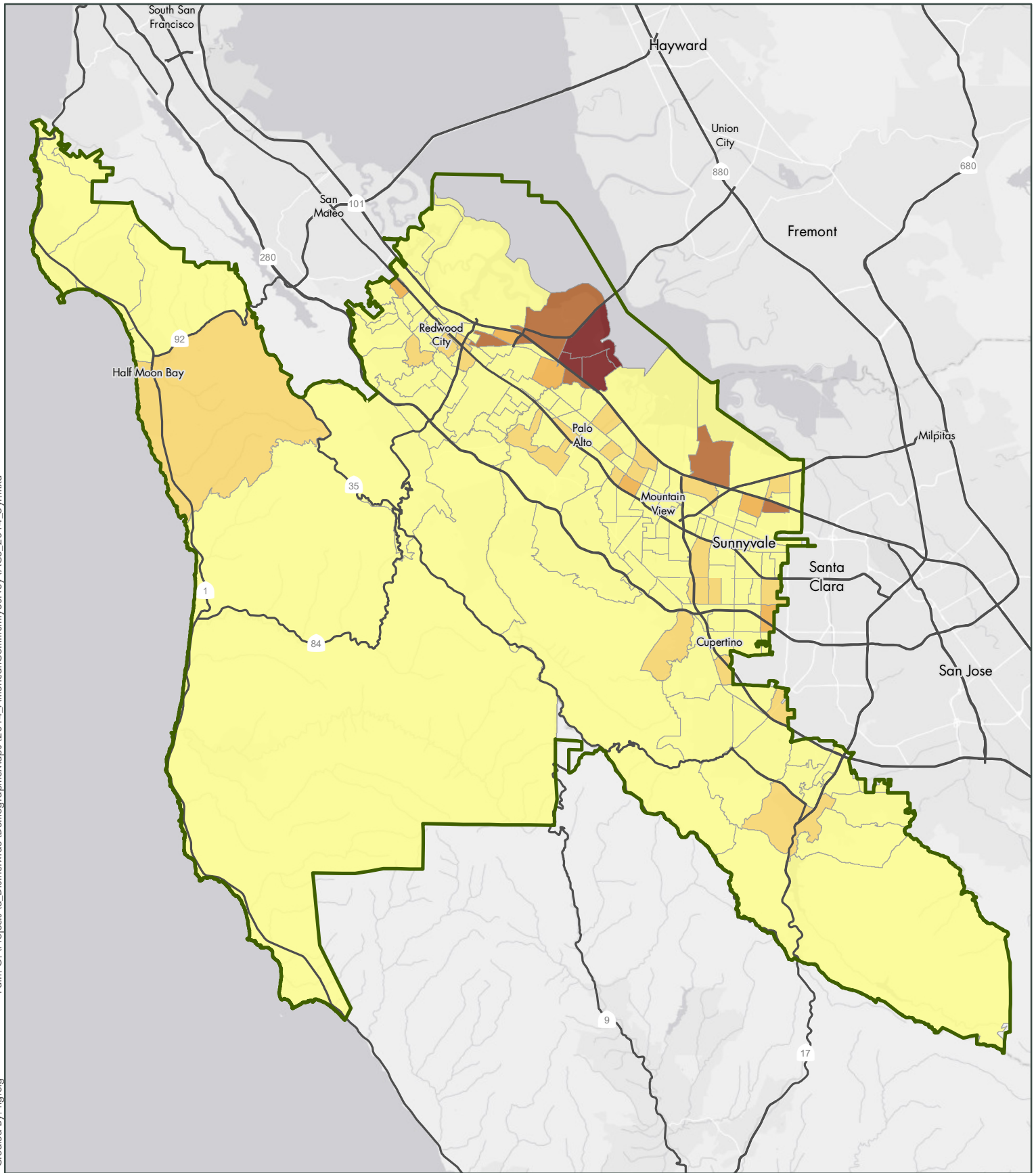
Miles 0 5 10



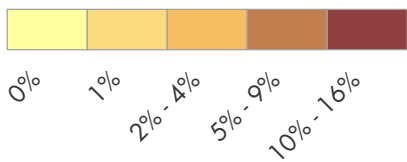
Midpeninsula Regional  
Open Space District  
(MROSD)

November 2016





## Native Hawaiian or Other Pacific Islander



Source: U.S. Census Bureau,  
ACS 2014 5-Year Estimate

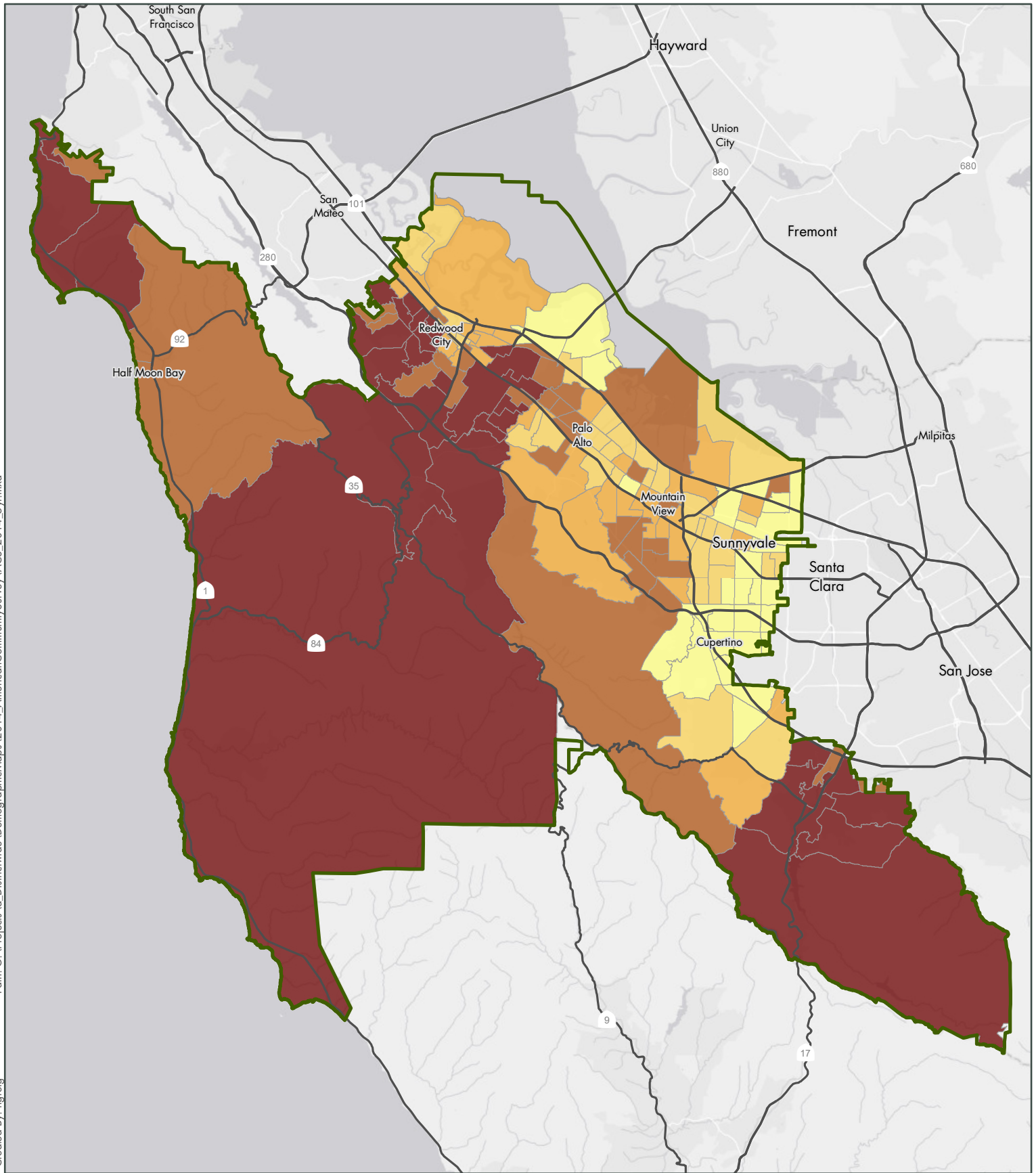
Miles 0 5 10



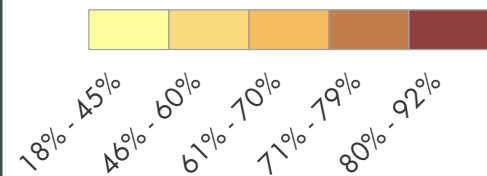
Midpeninsula Regional  
Open Space District  
(MROSD)

November 2016





### White Only



Source: U.S. Census Bureau,  
ACS 2014 5-Year Estimate

Miles 0 5 10

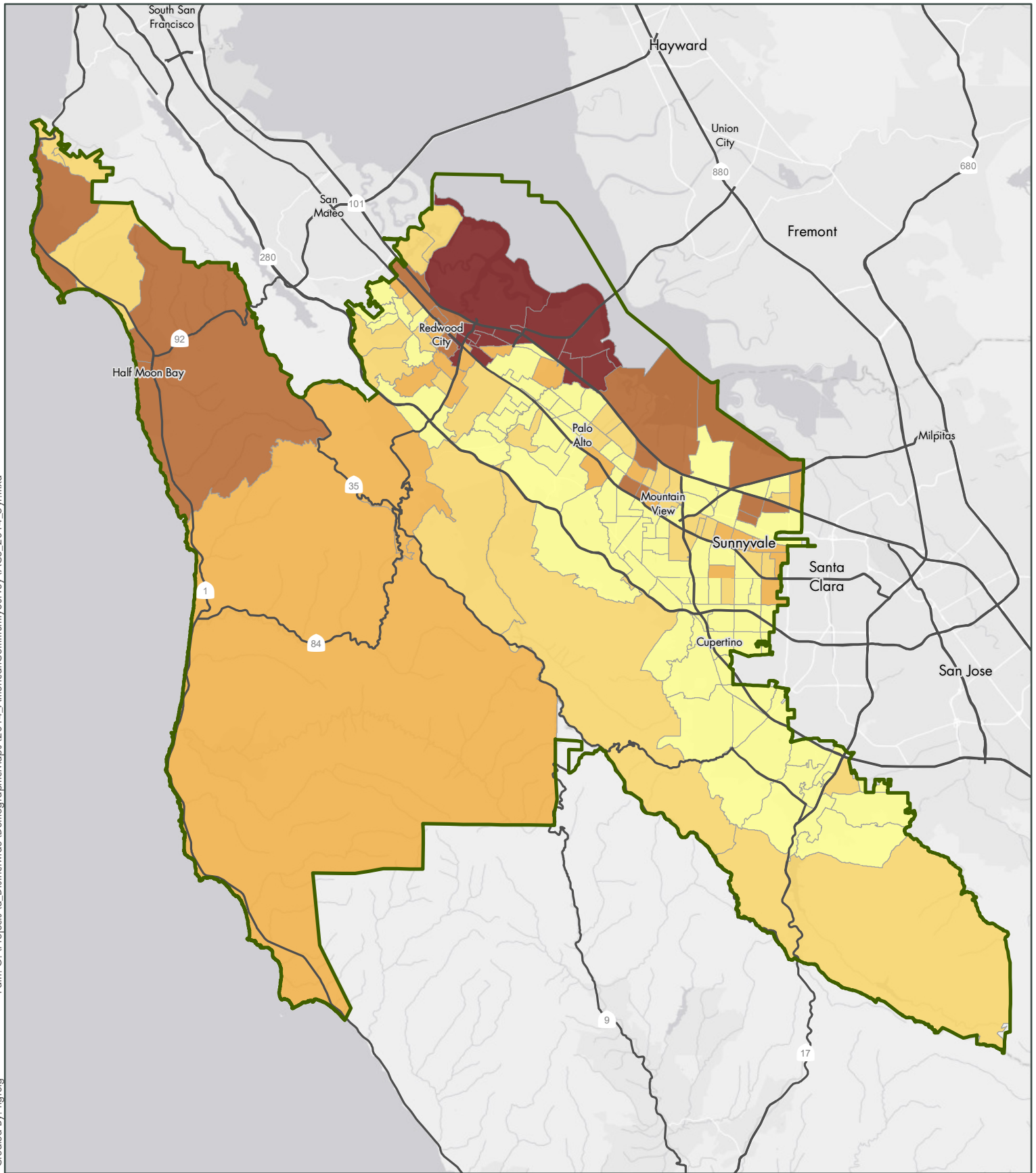


Midpeninsula Regional  
Open Space District  
(MROSD)

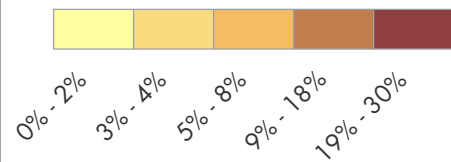
November 2016







## Other Race



Source: U.S. Census Bureau,  
ACS 2014 5-Year Estimate

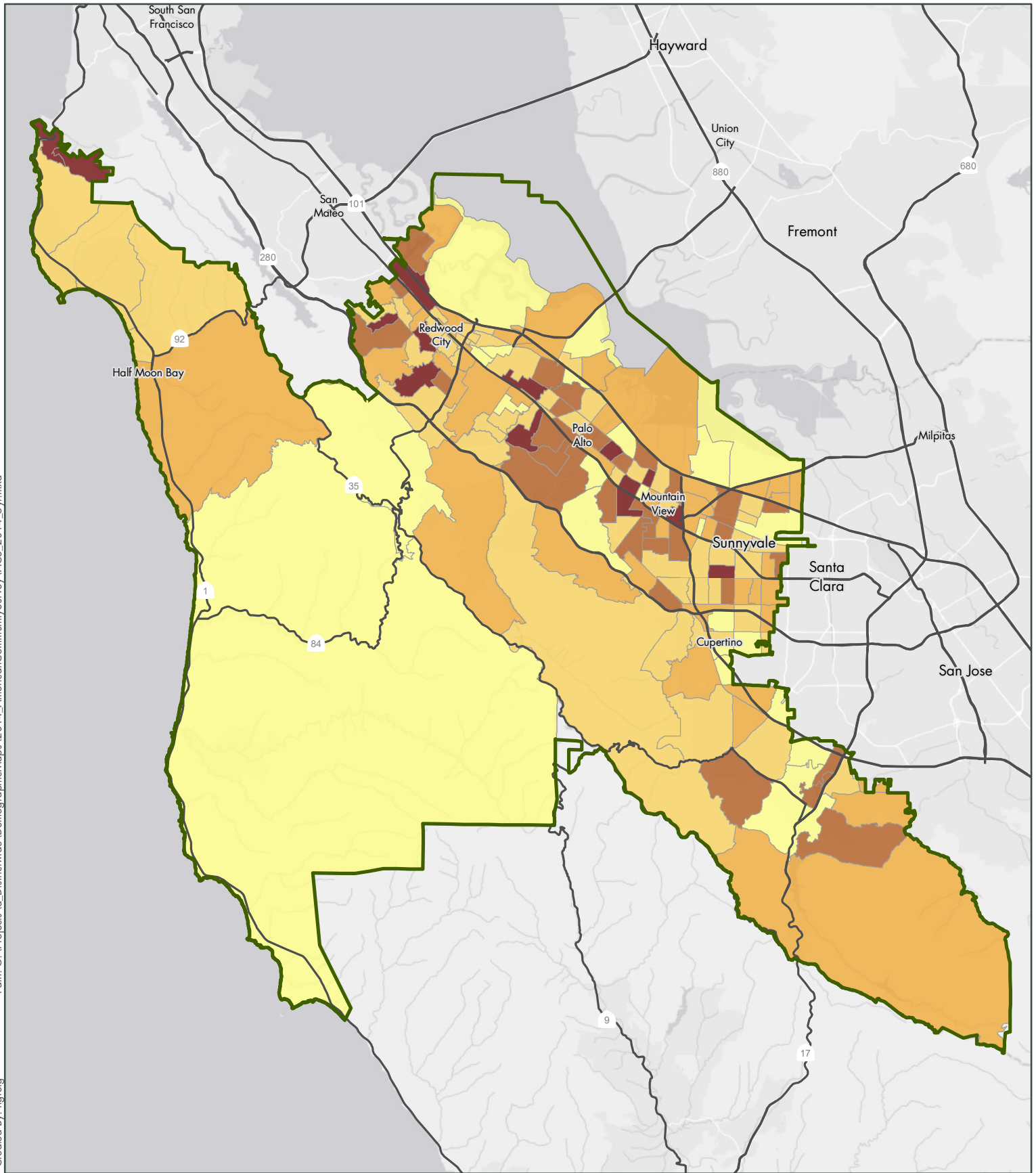
Miles 0 5 10



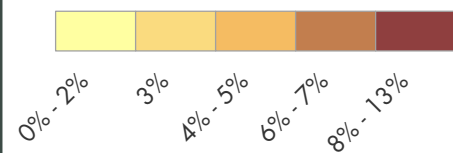
Midpeninsula Regional  
Open Space District  
(MROSD)

November 2016





## Two or More Races



Source: U.S. Census Bureau,  
ACS 2014 5-Year Estimate



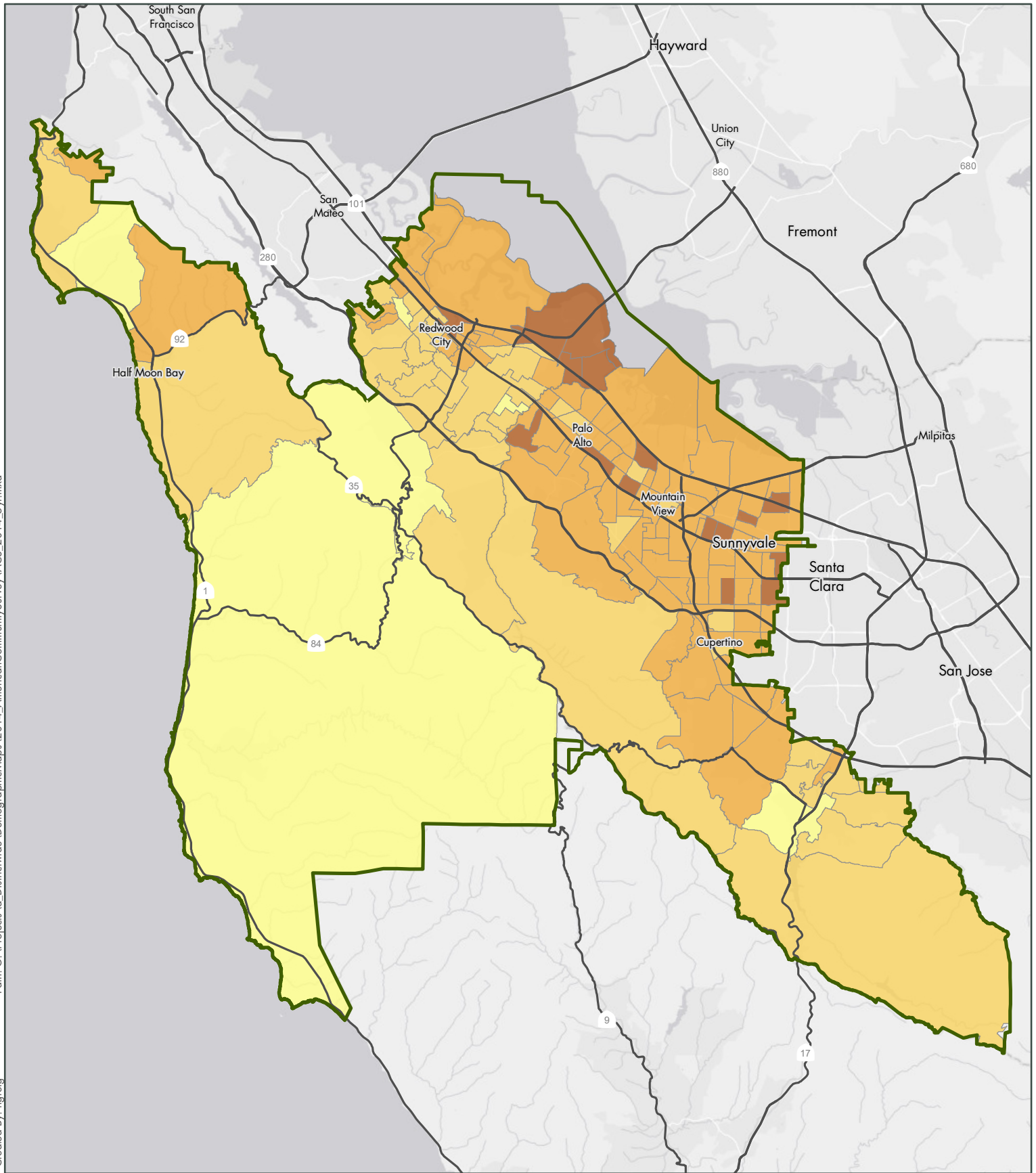
Miles 
0
5
10

Midpeninsula Regional  
Open Space District  
(MROSD)

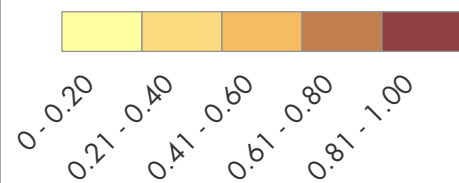
November 2016







### Simpson's Index of Diversity



Notes: Simpson's Index takes into account richness and evenness. Richness is the number of races present. Evenness is the proportionality of races. E.g. a census tract that is overwhelmingly one race with a limited number of other races will have a low Simpson's Index.

Source: U.S. Census Bureau,  
ACS 2014 5-Year Estimate

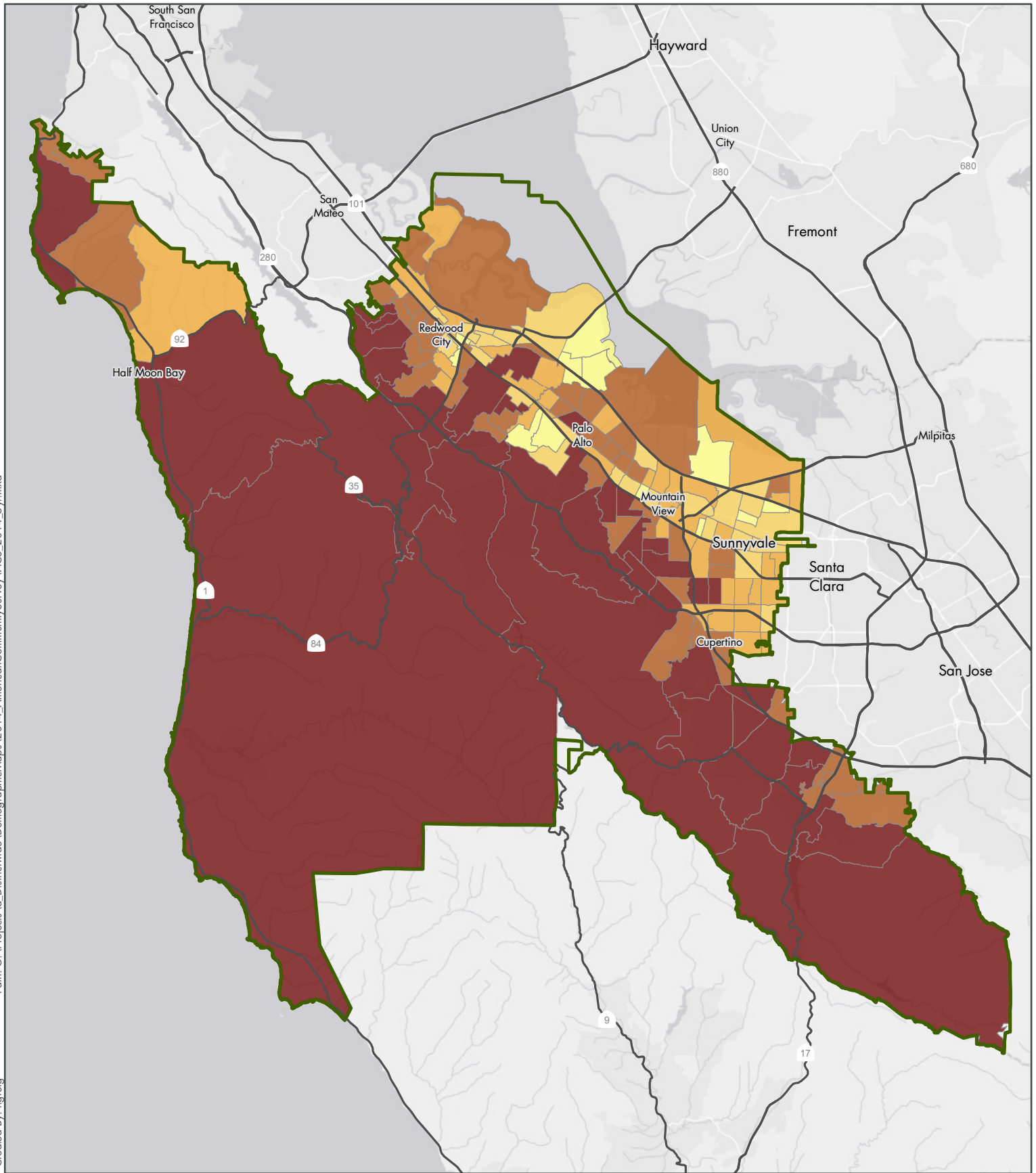
Midpeninsula Regional  
Open Space District  
(MROSD)

November 2016

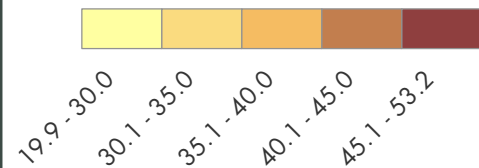


Miles 0 5 10





## Median Age



Source: U.S. Census Bureau,  
ACS 2014 5-Year Estimate

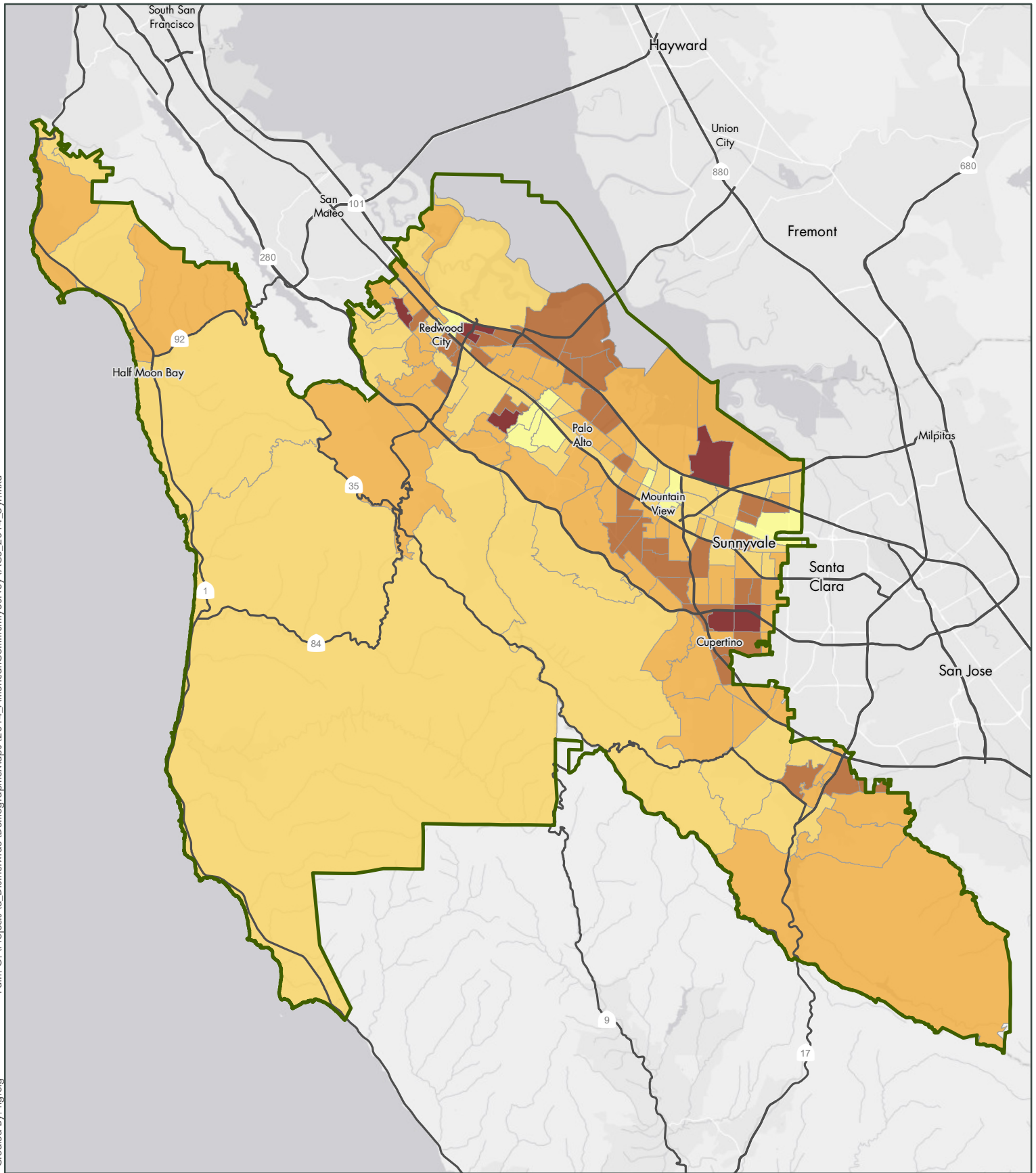


Miles 0 5 10

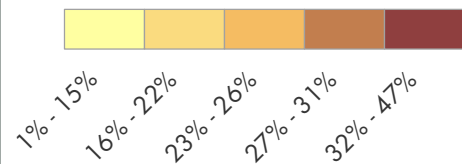
Midpeninsula Regional  
Open Space District  
(MROSD)

November 2016

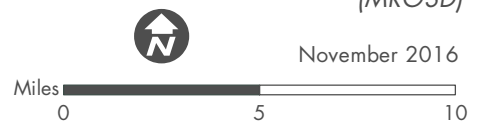




## Under 18 Years Old



Source: U.S. Census Bureau,  
ACS 2014 5-Year Estimate

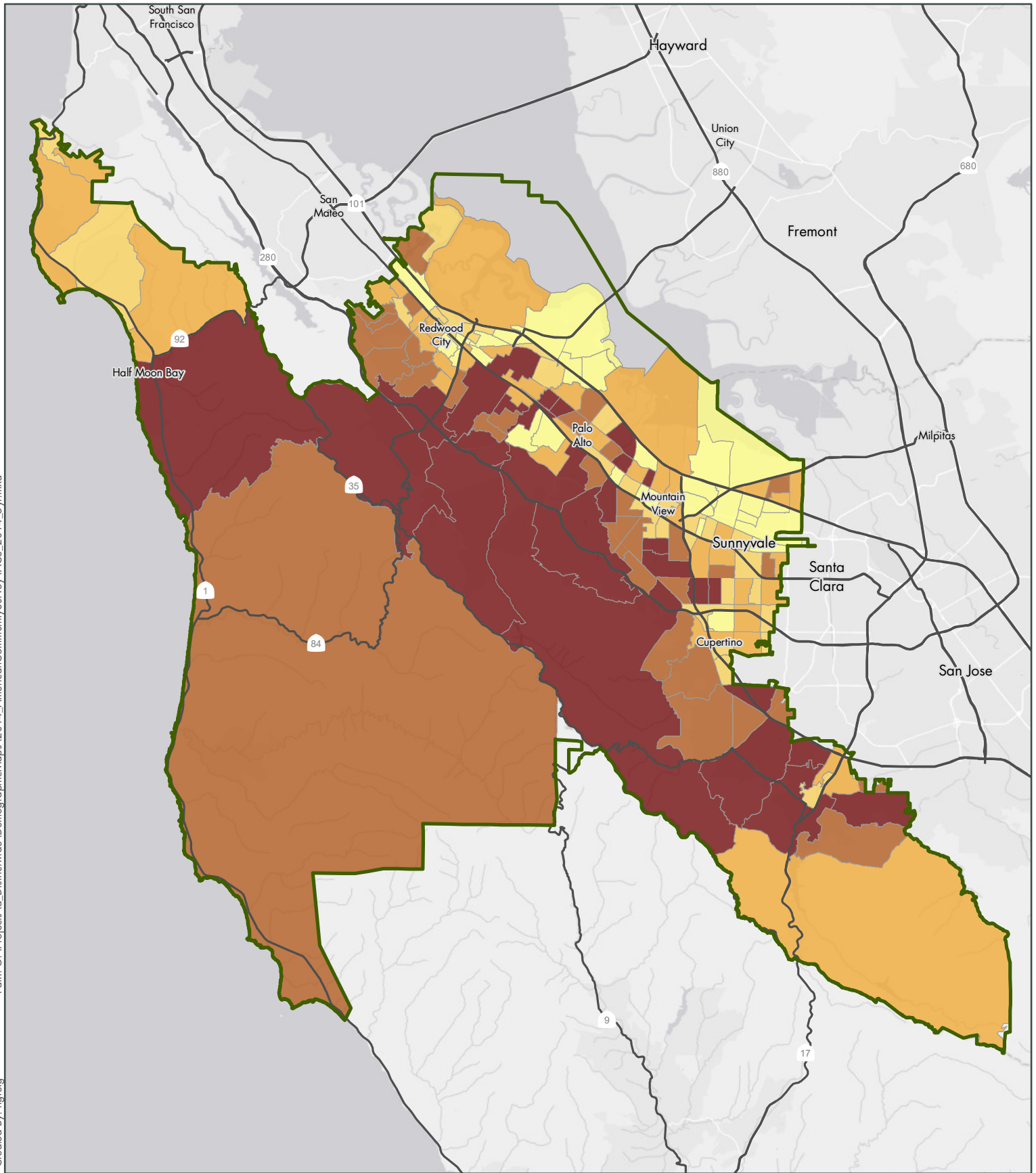


Midpeninsula Regional  
Open Space District  
(MROSD)

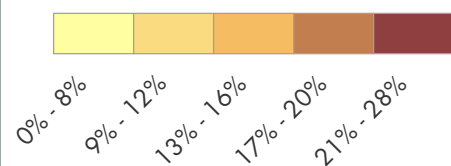
November 2016







## Over 65 Years Old



Source: U.S. Census Bureau,  
ACS 2014 5-Year Estimate

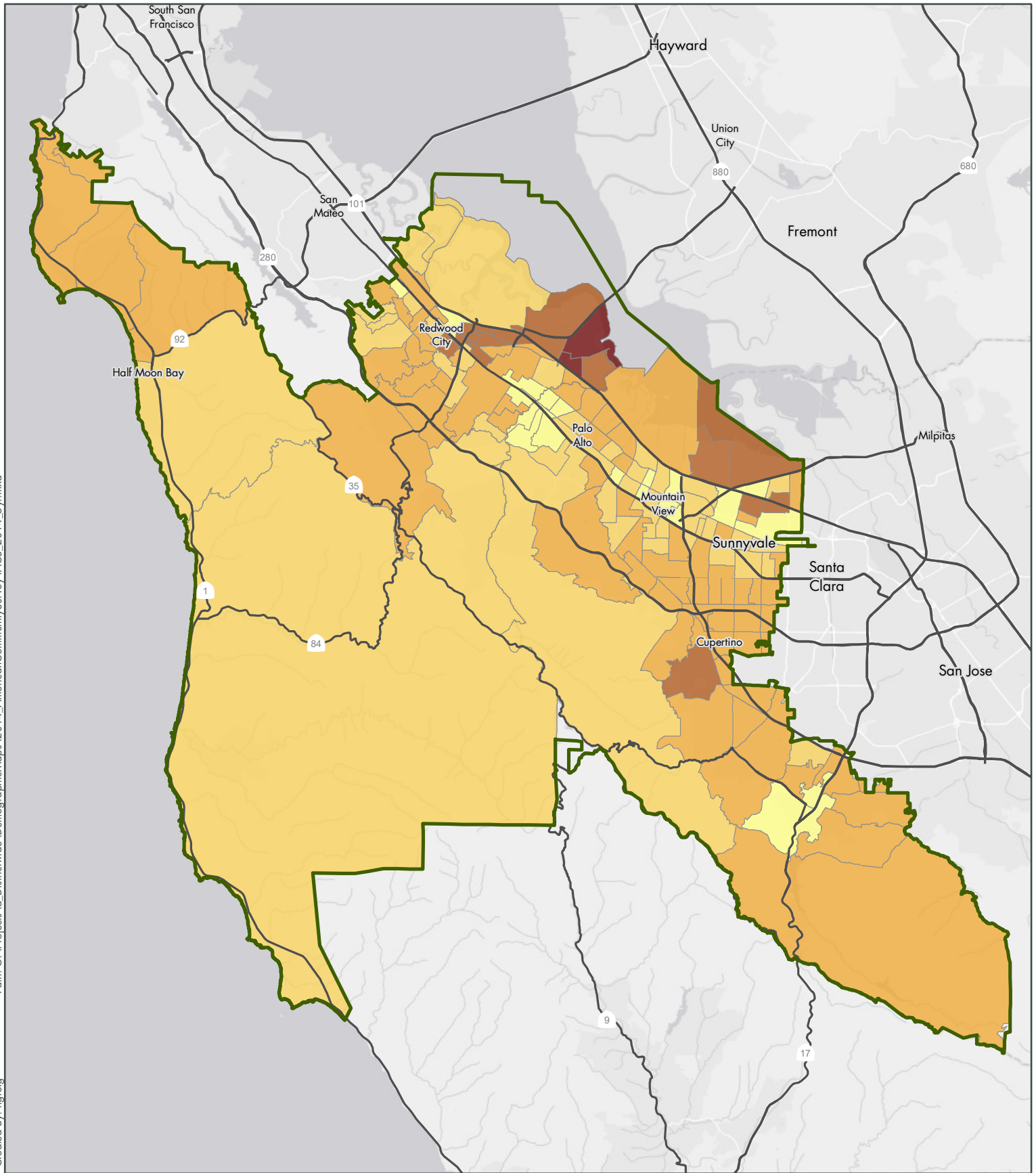
Miles 0 5 10



Midpeninsula Regional  
Open Space District  
(MROSD)

November 2016





## Average Household Size



1.65 - 2.24  
2.25 - 2.64  
2.65 - 3.11  
3.12 - 4.20  
4.21 - 5.21

Notes: Average Household Size is the average number of people per household for each occupied unit.

Source: U.S. Census Bureau,  
ACS 2014 5-Year Estimate

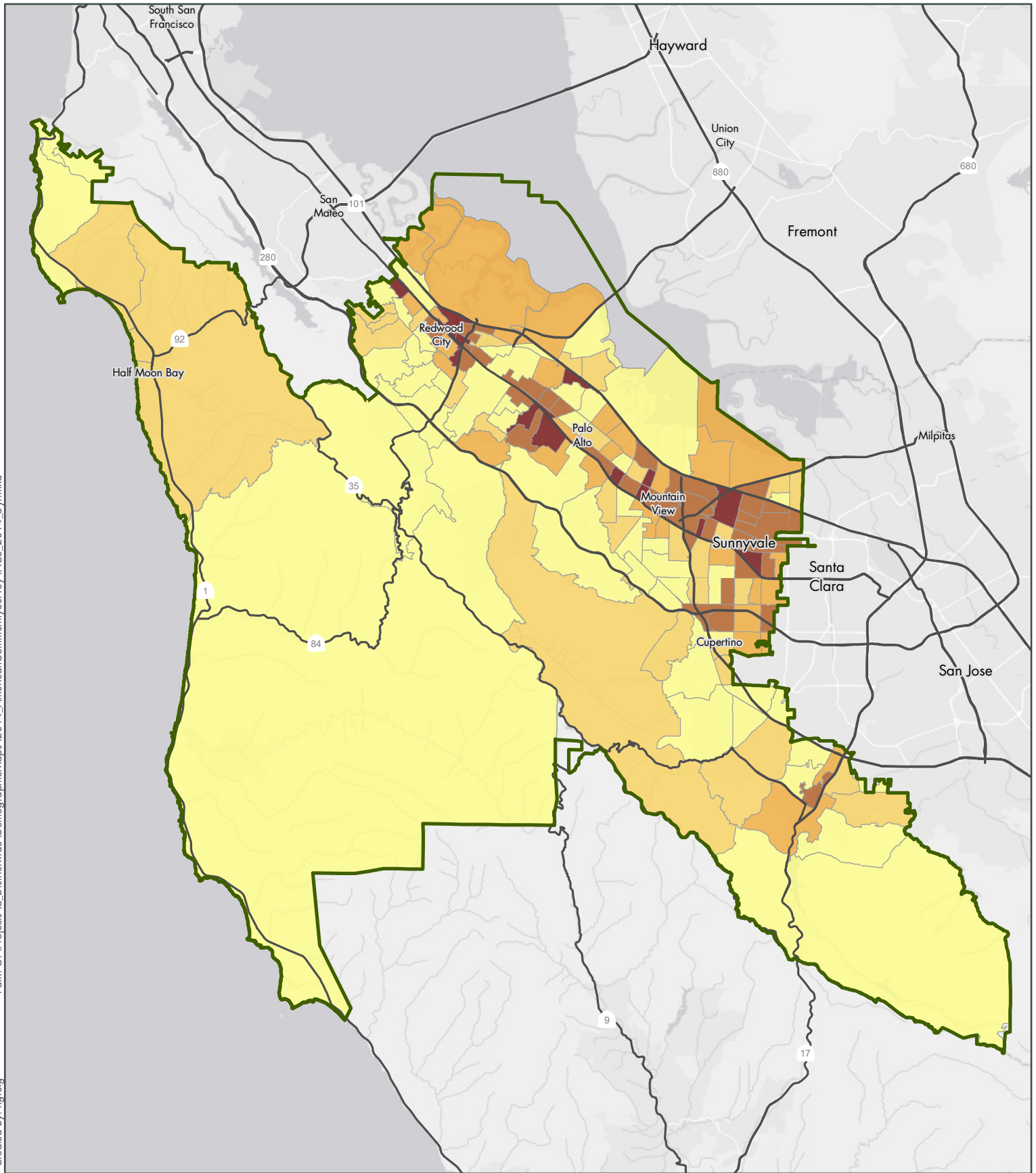
Midpeninsula Regional  
Open Space District  
(MROSD)

November 2016

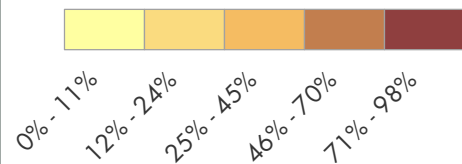


Miles 0 5 10





## Multi-Family Units



Notes: Multi-family units is the percentage of structures that have two or more units

Source: U.S. Census Bureau, ACS 2014 5-Year Estimate

Midpeninsula Regional Open Space District (MROSD)

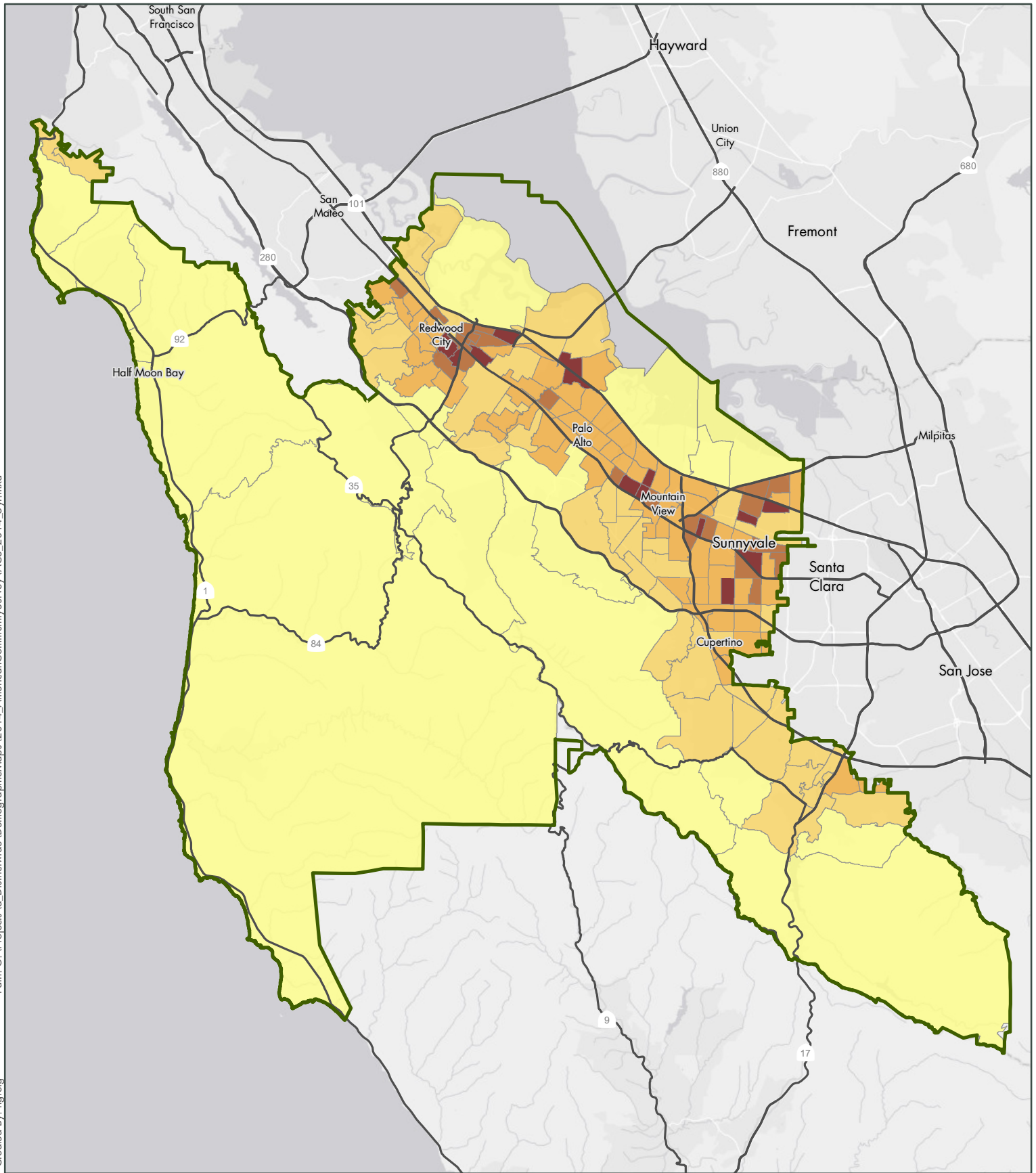
November 2016



Miles 0 5 10







### Population Density (Thousands Per Square Mile)



0-1    2-5    6-10    11-15    16-28

Source: U.S. Census Bureau,  
ACS 2014 5-Year Estimate

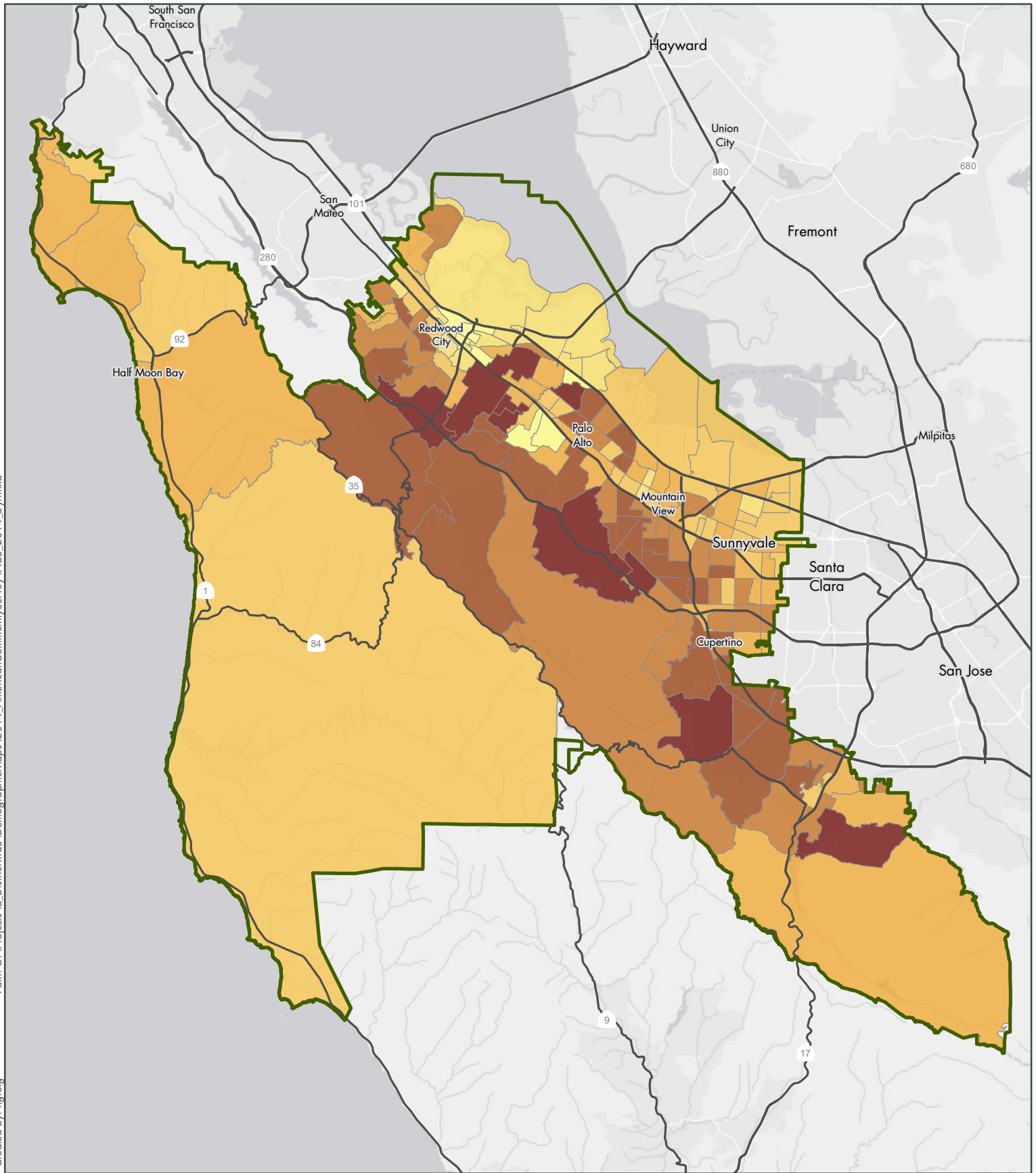


Miles 0 5 10

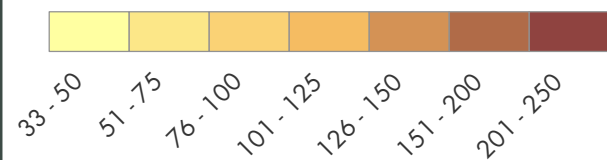
Midpeninsula Regional  
Open Space District  
(MROSD)

November 2016





### Median Household Income (Thousands)



Source: U.S. Census Bureau,  
ACS 2014 5-Year Estimate

Miles 0 5 10

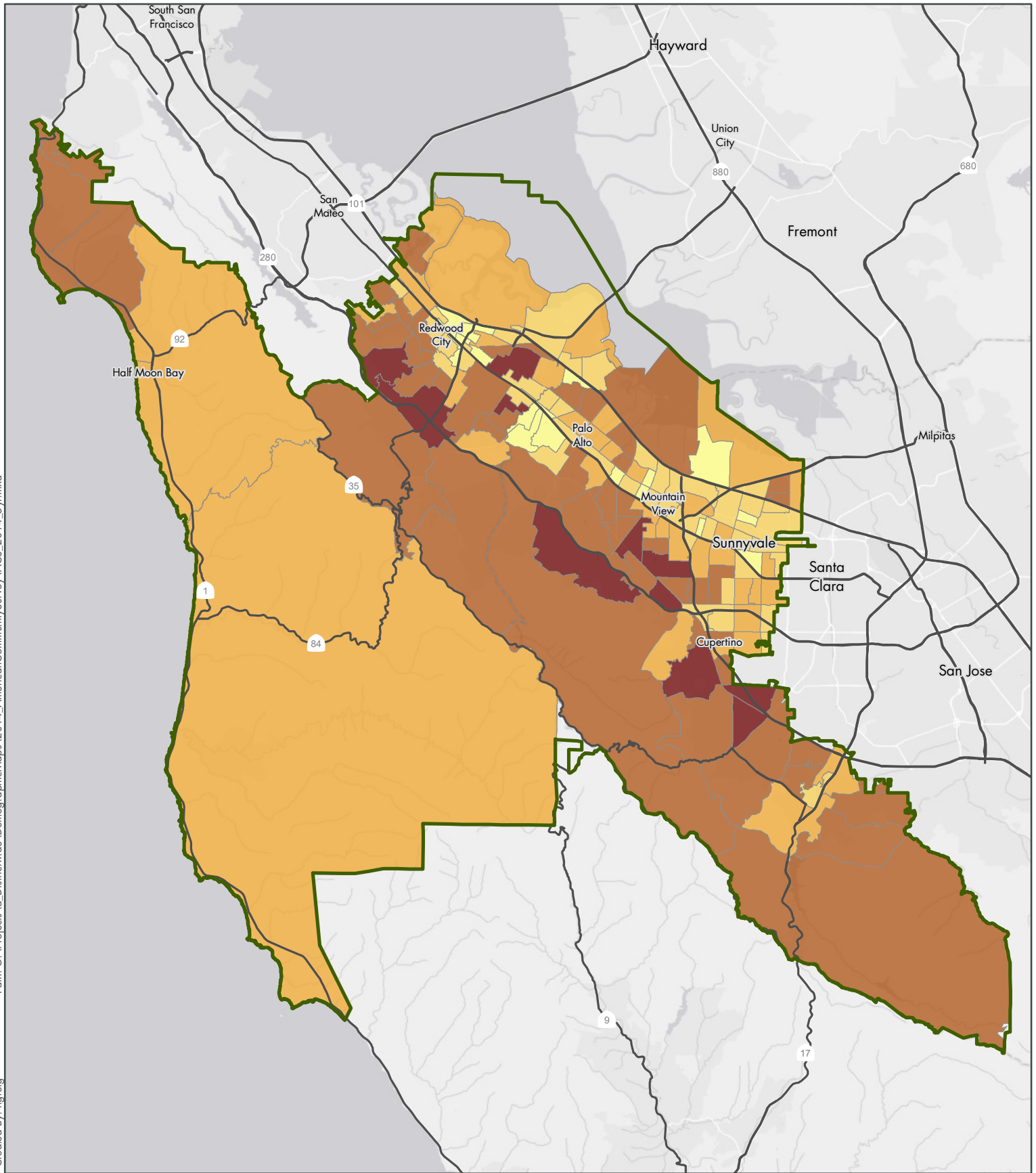


Midpeninsula Regional  
Open Space District  
(MROSD)

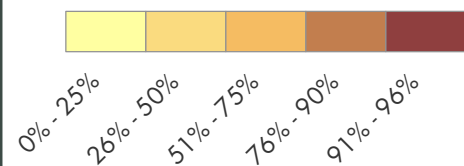
November 2016







## House Ownership



Source: U.S. Census Bureau,  
ACS 2014 5-Year Estimate

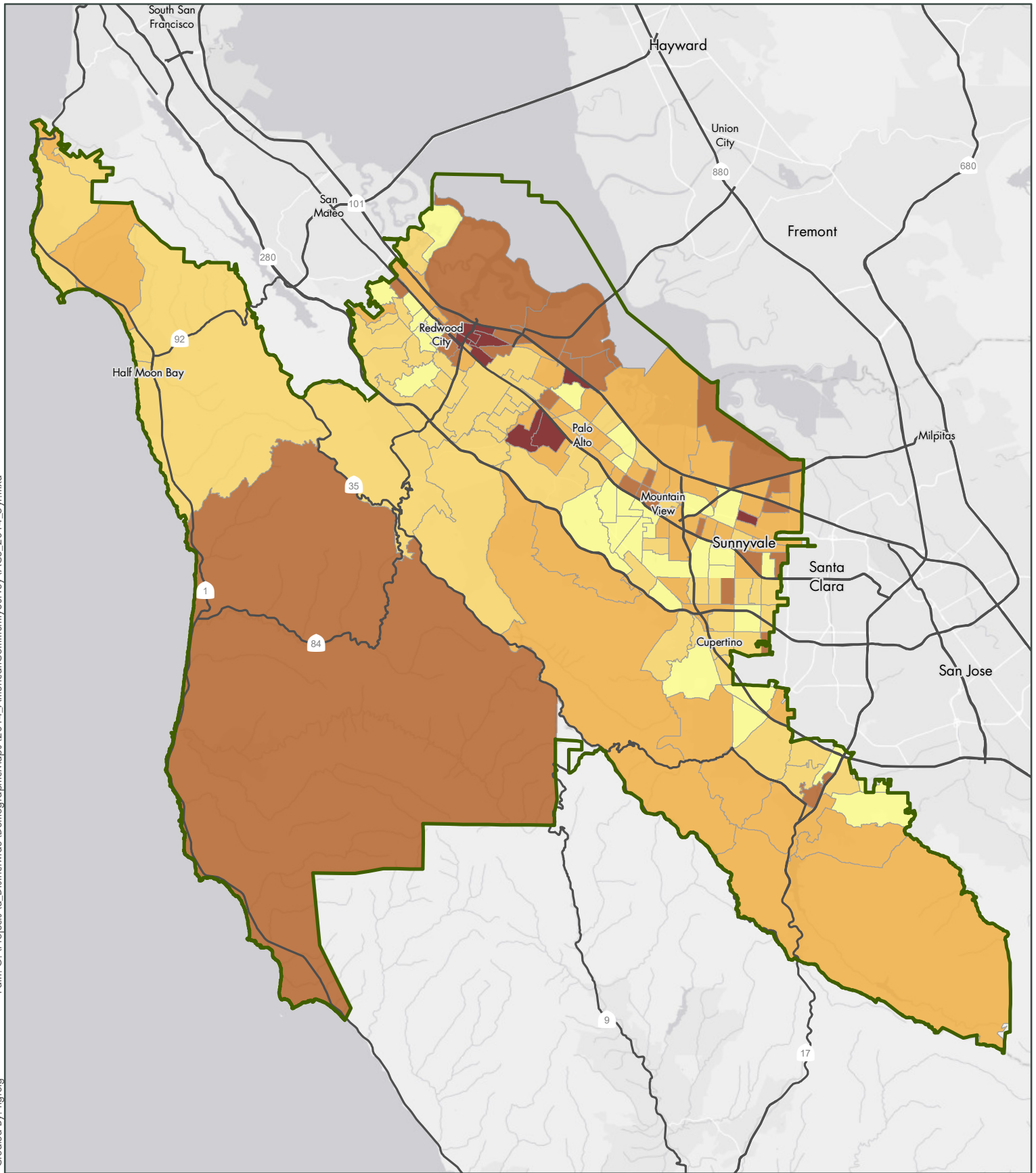


Miles 0 5 10

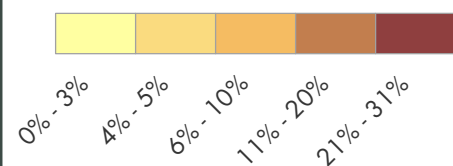
Midpeninsula Regional  
Open Space District  
(MROSD)

November 2016





## Poverty Rate



Notes: Map shows the percentage of people in poverty per census tract. The Census Bureau uses income thresholds that vary by family size and composition to determine who is in poverty. If a family's total income is less than the family's threshold, then that family and every individual in it is considered in poverty.

Source: U.S. Census Bureau, ACS 2014 5-Year Estimate

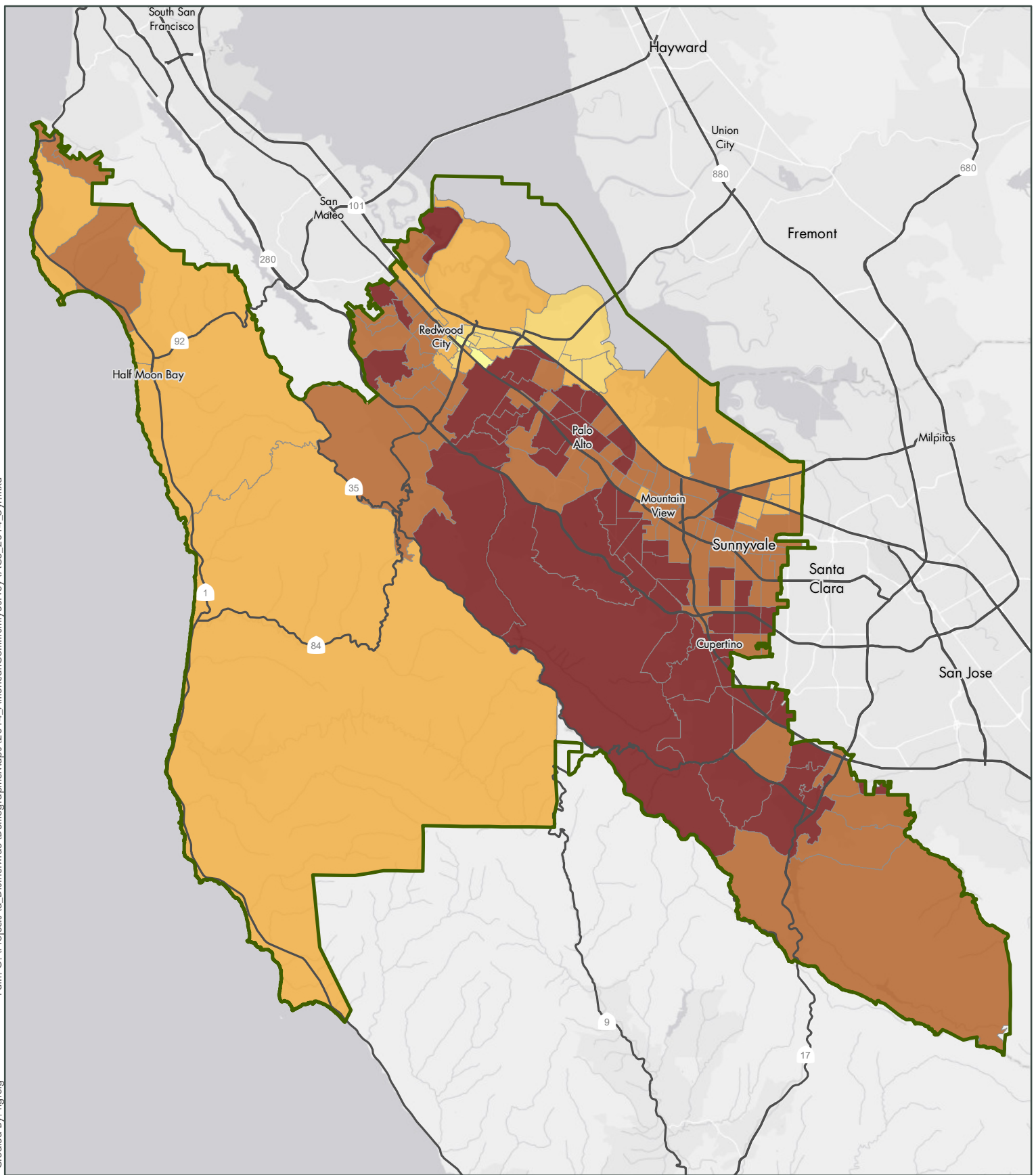


Miles 0 5 10

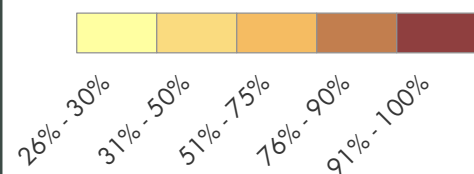
Midpeninsula Regional  
Open Space District  
(MROSD)

November 2016





## Post Secondary Education (Age 25+)



Notes: This map shows the percentage of people over 25 years old who have at least some education past high school or the GED. This includes people with some college, associate degree, bachelor degree, master's degree, or doctoral.

Source: U.S. Census Bureau, ACS 2014 5-Year Estimate

Midpeninsula Regional  
Open Space District  
(MROSD)

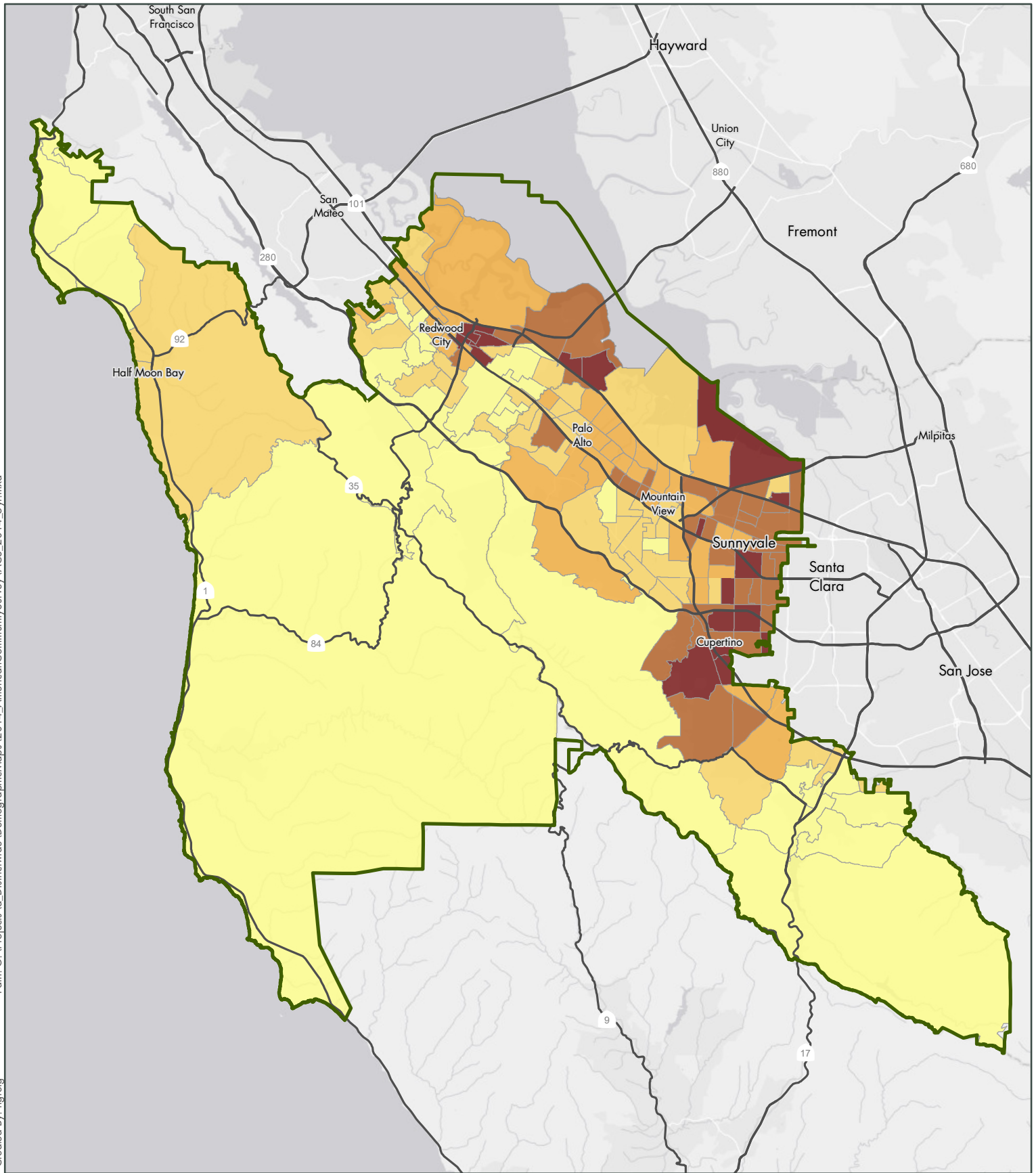
November 2016



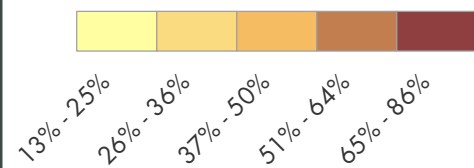
Miles 0 5 10







### Non-English Speaking Households



Source: U.S. Census Bureau,  
ACS 2014 5-Year Estimate

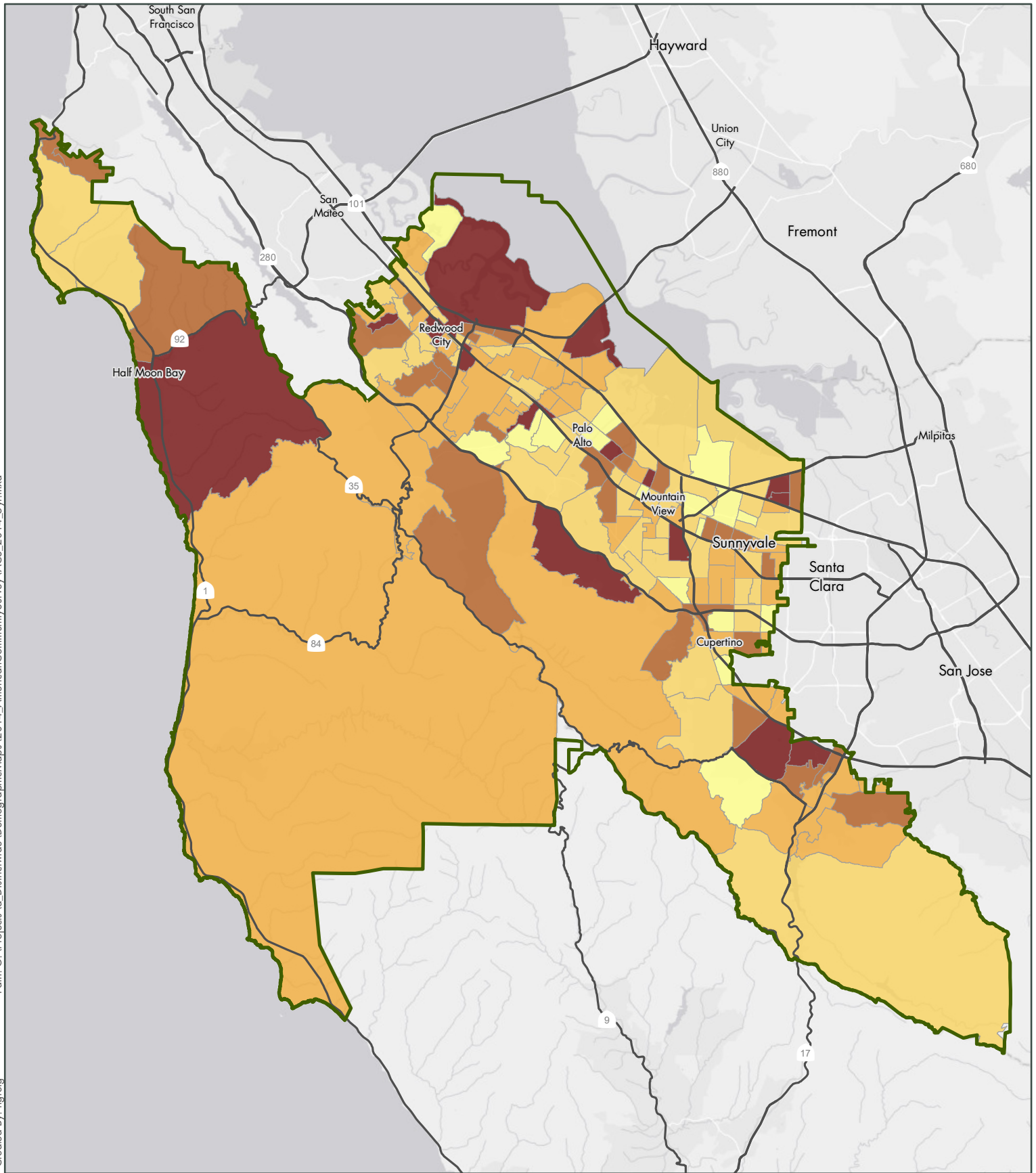


Miles 0 5 10

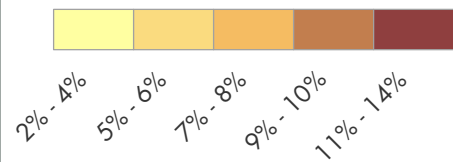
Midpeninsula Regional  
Open Space District  
(MROSD)

November 2016





## Disability Rate



Notes: Map shows the percentage of people with a disability per census tract

Source: U.S. Census Bureau,  
ACS 2014 5-Year Estimate

Midpeninsula Regional  
Open Space District  
(MROSD)

November 2016



Miles 0 5 10

