



Midpeninsula Regional
Open Space District

R-11-23
Meeting 11-06
March 9, 2011

AGENDA ITEM 7

AGENDA ITEM

Field Enforcement Activity Report for Calendar Year 2010 (CY2010) and Ten-Year Field Activity Summary

GENERAL MANAGER'S RECOMMENDATION

Accept the Calendar Year 2010 (CY2010) Miscellaneous Enforcement Activity Summary and the Ten-Year Field Activity Summary.

SUMMARY

This report begins the transition from the old manual database collection process, to a new system developed on Microsoft Access. This will ensure greater accuracy and allow for more efficient record keeping. The old system used a combination of manual record keeping and Microsoft Excel spreadsheets that were transferred to Access. In addition, to allow for year-to-year comparisons, data from the old system will need to be shown in Operation reports until a transition is completely made once the District has accrued ten years of use statistics. Therefore, when reviewing changes from prior years, it is important to understand that the differences between these two record keeping systems can account for unusual variations in violation counts.

Total use violations on District property in CY2010 decreased by 9% from CY2009. Parking and After Hours Parking violations accounted for 27% of all recorded violations in the past year, with Rancho San Antonio County Park experiencing the greatest number of parking violations over any of the District preserves. It was interesting to see that total Bicycle violations decreased by 21% over the previous year. Bicycle accidents dropped from a high of 40 incidents in CY2009 to 25 incidents in CY2010. The number of off-road incidents, jumped from 15 incidents in CY2009 to 38 incidents in CY2010 primarily due to a neighborhood motorcycle problem in the El Corte de Madera Open Space Preserve that Ranger Staff is currently making a special effort to focus on.

DISCUSSION

Since April 1995, as a result of a combined Field Staff desire and a request by the Board, monthly written reports of emergency response and enforcement incidents on District land have

been provided to the Board. At the end of each year, staff provides the Board with a summary of the total yearly emergency response and enforcement incidents including a comparison to the previous nine years of data collection.

Information for this year's report was generated through the new Operations Incidents Database that was placed in service for data collection on January 1, 2010. The new system was created to develop a higher standard for accurate information that will assist in ensuring future data is easier to collate, verify, and cross-reference. In prior years, creation of this report relied on a manual data collection method that was prone to errors and had limited collection capabilities. As such, the data from CY2009 and prior years will continue to be imported over from the old system until we reach 10 years of data collection on the new system.

Three summaries are presented for Board review in this report: the CY2010 Miscellaneous Enforcement Activity Summary (Appendix A); the Ten-Year Field Activity Summary (Appendix B.1); and new for this year, a summary of the actual violation codes, listed in order of frequency of occurrence (Appendix B.2). Note that information for prior years in Appendix B.2 is not as complete due to limitations in the older database. Graphical representation of trends is shown in appendices C and D.

The Miscellaneous Enforcement Activity Summary (Appendix A) is shown in chronological order for CY2010, of contacts made or reports taken of the most serious incidents known by staff on or near District land. This is not a comprehensive list of incidents but reflects those of special interest or concern.

The Ten-Year Field Activity Summary (Appendix B.1) shows violations of District Land Use Regulations, emergency responses, criminal activity, and mutual aid incidents for the last ten years. Only contacts that resulted in some form of written record (Incident Report, Written Warning, Citation, and Mutual Aid Assistance) have been included in these summaries. General assistance to preserve visitors, informational contacts, and verbal warnings are not included.

The table of individual violations occurrence is new this year and provides a list of violations in order (Appendix B.2) from most to least occurrences. It is designed to give the Board and staff a view of frequency in trends of the various individual violations recorded.

Trends and Issues

It should be noted that trends for 2010 which are discussed in this report may be the result of changes in the methods of data collection. Greater accuracy in the reporting system which is provided by the new database system will allow for greater confidence in the data in future years.

Violations of District Ordinances continue to be the majority of enforcement District Rangers provide for on District Land (as they should be), confirming they are remaining primarily focused on resource protection. After-hours parking, dogs off leash, and after-hours use continue to be the most frequent violation contacts made by District Rangers.

Rancho San Antonio Preserve and County Park continue to require the most enforcement due to the level of public use. Using the new database query we find rangers issued citations for 260 parking violations of various types and for 128 resource violations, comprised primarily of dog's prohibited and after-hours use.

Total bicycle related violations decreased from 361 in CY2009 to 285 in CY2010, which may reflect either improved compliance or fewer violations actually observed by rangers, making this a category to watch and continue to evaluate of over the next couple of years.

	2001	2002	2003	2004	2005	2006	2007	2008	2009	2010
A. VIOLATIONS										
1.Bike-closed area	62	60	63	89	58	94	89	52	89	76
2.Bike-speed	82	101	93	146	113	92	89	80	94	67
3.Bike-helmet	159	135	152	187	124	157	166	146	155	129
4.Bike-night riding	39	5	25	13	24	18	12	12	23	13
Total Bicycle Violations	342	301	333	435	319	361	356	290	361	285

Bicycle accidents decreased and are more in line with the ten-year trend from a high water mark of 40 incidents that occurred in CY2009 (see Appendix D).

Overall the number of violations of District ordinances has continued to be on a generally steady, consistent trend, despite the continued increase in acres of land (See Appendix C).

FISCAL IMPACT

No fiscal impact is anticipated from the acceptance of the information in this report.

PUBLIC NOTICE

Public notice was provided in accordance with the Brown Act. No further notice is required.

CEQA COMPLIANCE

This proposed action is not a project under the California Environmental Quality Act and no environmental review is required.

NEXT STEPS

Staff will continue to actively enforce District regulations, encourage all users to act in a manner which provides for the protection of the natural resources, and allow for the safe and enjoyable use of the preserves by all visitors.

Attachment(s)

1. Appendix A - CY2010 Miscellaneous Enforcement Activities
2. Appendix B.1 - Field Activity Summary
3. Appendix B.2 – List of Frequent Violations
4. Appendix C – Chart - District Enforcement Activities – Ten Year Summary
5. Appendix D – Chart - Accidents by User Type

Prepared by:

Gordon C. Baillie, Management Analyst

Contact Person:

David Sanguinetti, Operations Manager

Appendix A

OCCURRENCES OF SPECIAL INTEREST 2010

Page 5

DATE	PUBLIC SUMMARY	Rangers	Other Agency	#Staff
January				
Jan 09 <i>AR 10S009</i>	<p>Witnesses reported to District Rangers that the victim of a mountain bike accident had been traveling at about 15-20 MPH. The accident occurred after the individual rode over a drain dip, became airborne, crashing 20 feet past the drain dip, rolling twice, and coming to a stop approximately 25 feet from where he originally hit the ground.</p> <p>A witness stated that she saw the victim roll, with his bicycle still attached to him. The victim suffered major trauma and was transported by helicopter to Stanford Hospital.</p> <p>Preserve Purisima Creek Redwoods Location</p>	3	AMR CALSTAR SMCSO WF	1
Jan 10 <i>AR 10F010</i>	<p>District Rangers responded to a bicycle accident, with a report of head trauma. Patient care was provided, and a landing zone established. A decision was made to transport the injured bicyclist by ground ambulance. The bicyclist said this was his first time riding on dirt trails. The individual had become airborne after hitting a drain dip, and landed approximately 30 feet away.</p> <p>Preserve Fremont Older Location</p>	5	AMR SCCF	2 3
Jan 10 <i>IR 10S012</i>	<p>Two individuals were cited for collecting plants (mushrooms) and released. Approximately ten pounds of Chanterelle mushrooms were taken into evidence.</p> <p>Preserve Long Ridge Location</p>	1		
Jan 15 <i>IR 10S017</i>	<p>Motorcycles were observed operating illegally in El Corte de Madera OSP. District Rangers and San Mateo County deputies positioned themselves at various gates. When the motorcyclists attempted to exit the preserve, they saw the rangers and turned back into the preserve. Rangers were unable to make contact.</p> <p>The search had to be discontinued, but a subject driving a van possibly associated with the motorcyclists was identified. Since this incident there has been further evidence of motorcycle activity in the preserve and District rangers are continuing work to apprehend the violators.</p> <p>Preserve El Corte de Madera Creek Location CM 06, CM 08</p>	4	SMCSO	
Jan 17 <i>IR 10F015</i>	<p>A individual was found deceased and hanging from a ceiling beam inside the pool house at Hicks Creek Ranch. Santa Clara County Sheriff Deputies and the Santa Clara County Coroners Office responded, investigated and removed the body.</p> <p>Preserve Sierra Azul Location Hicks Creek Ranch</p>	3	SCCSO	4
Jan 29 <i>IR 10F019</i>	<p>District Rangers contacted a person who had returned to his vehicle after hiking on the Bald Mountain Trail. The person said that his hiking companion was an "at risk" person who was paranoid, used methamphetamine, and was distraught over the death of a parent. He was also reported as carrying a knife and screwdrivers and had made statements about wishing to be killed by a law enforcement officer.</p> <p>The ranger requested a Santa Clara County Sheriff. An extensive search was made of the area, but the individual was not located. The Santa Clara County Sheriff's office continued to pursue the case.</p> <p>Preserve Sierra Azul Location</p>	3	SCCSO	7

OCCURRENCES OF SPECIAL INTEREST 2010

DATE	PUBLIC SUMMARY	Rangers	Other Agency	#Staff
Jan 30 <i>IR 10S023</i>	Two juvenile were observed riding dirt motorcycles on Monte Bello Rd. One of the individuals was from a neighboring property. District Rangers cited both individuals and released them to their family. The father of one of the juveniles later called to complain that his son should not have been issued a citation. Preserve Monte Bello Location	3		
February				
Feb 07 <i>IR 10S028</i>	A subject was seen riding a mountain bike in a seasonally closed area. When he saw the ranger he jumped off of his bike, turned the bike around, and rode off. The subject was caught, and cited for closed area violation, and for resisting arrest. Preserve Long Ridge Location Near Gate LR12	3		
Feb 13 <i>IR 10S030</i>	A mountain lion was reported as being clearly visible in a tree approximately 20 feet from the Fault Trail. District Staff responded and confirmed the sighting. For safety, rangers cleared and closed the preserve. The connector trail to Palo Alto's Foothills Park was also closed, with the cooperation of Palo Alto rangers. The preserve was checked the next day and re-opened when it was confirmed that the mountain lion had left the area. Preserve Los Trancos Location	6		
Feb 14 <i>IR 10F042</i>	A subject was stopped for not wearing a bicycle helmet. He became visibly angry upon being informed that he was required to wear a helmet. The subject fled, but was later identified as being a coach at a local high school. He was positively identified through a driver's license picture, and a request was sent to the District Attorney's office to have charges of failure to wear a bicycle helmet, and resisting an officer, filed against the individual. Preserve Fremont Older Location into the Prospect Parking Lot	2	SCCSO	1
Feb 16 <i>IR 10F033</i>	Two subjects were stopped in the Loma Prieta area of Sierra Azul OSP for cutting and removing wood. One subject fled and the other was cited by CAL FIRE. The chainsaws and an associated vehicle are owned by the suspect who fled. The saws were taken as evidence and the vehicle was reported to the California Highway Patrol. Preserve Sierra Azul Location Loma Prieta Ranch	1	CDF SCRC SO	3 1
Feb 20 <i>IR 10S040</i>	Seven subjects were contacted for smoking marijuana. All seven subjects were cited for smoking in a non-designated area and given verbal warnings for the possession of marijuana. One subject was arrested by a San Mateo County Sheriff Deputy on outstanding warrants. The others were released. Preserve Thornewood Location	2	SMCSO	2
Feb 25 <i>IR 10S042</i>	A suspect was contacted and cited for parking in the handicapped parking lot without a placard. Because of gardening equipment in the bed of the vehicle, and the location which was close to a large marijuana garden located in 2008, it is suspected that the individual may have been involved with marijuana growing. San Mateo County Sheriff deputies were requested, but were later cancelled. Preserve Skyline Ridge Location Disabled parking lot	2		
March				

OCCURRENCES OF SPECIAL INTEREST 2010

Page 7

DATE	PUBLIC SUMMARY	Rangers	Other Agency	#Staff
Mar 08 <i>IR 10S052</i>	<p>A suspicious vehicle was seen parked along Page Mill Rd. An irrigation drip system, some discarded food, and an empty box of cigarettes were found along with fresh footprints heading down a steep hill, which suggested a possible marijuana garden was in the area.</p> <p>Follow-up with the Santa Clara County Sheriff Office determined it was probably associated with a marijuana grow site which had been eradicated on Hidden Villa property the previous year.</p> <p>Preserve Foothills Location Ridge below hairpin turn near gate FH01, 150' from road</p>	1		
Mar 23 <i>IR 10F079</i>	<p>A large delivery truck was reported by Santa Clara County Roads as being in the preserve. The preserve gate was found open. The vehicle was located, and was determined to be stolen. The Santa Clara Valley Water District's Hazmat team responded as a small amount of diesel fuel had leaked into the creek. The HazMat team dammed the creek, and removed the fuel.</p> <p>Preserve Sierra Azul Location Former Beatty Property</p>	1	SCCF SCCSO	3 1 2 3
Mar 26 <i>IR 10F083</i>	<p>A large group of individuals accessed the dirt section of Reynolds Road on District property to have a party. Upon leaving, one of the vehicles hit the upper bank of the road. The driver became distraught and was contemplating suicide. A neighbor heard the commotion and called the Santa Clara County Sheriff's Department.</p> <p>Deputies responded and found three vehicles with eleven young adults. Marijuana and paraphernalia, associated with the group, was destroyed at the scene. The deputies identified the two drivers, and checked them for sobriety. The person who was threatening suicide was taken to the hospital for a 72 hour mental evaluation, and the other individuals were released.</p> <p>Preserve Sierra Azul Location Reynolds Road</p>	1	SCCSO	5
April				
Apr 04 <i>IR 10S070</i>	<p>A Supervising Ranger at his residence in La Honda Creek OSP heard 10-15 rounds being fired from a shotgun at approximately 10:00 PM. The San Mateo County Sheriff's Office was notified. They had already received calls about the incident from neighbors. The area was checked, but no suspects were found.</p> <p>Preserve La Honda Creek Location Ranger Residence</p>	1		
Apr 06 <i>IR 10S071</i>	<p>An individual was cited for dog off-leash and was given a verbal warning for false information to a peace officer, and then released. The subject was verbally abusive, initially provided false information, and said he would run the next time he was stopped.</p> <p>Preserve Windy Hill Location At intersection with upper Meadow Trail</p>	2		
Apr 07 <i>AR 10S072</i>	<p>A bicycle accident occurred on the Spring Board Trail. The victim had a mild concussion and was transported to Stanford Hospital. After the incident a CAL FIRE engine became stuck in the mud, and was removed with assistance from a bulldozer.</p> <p>Preserve El Corte de Madera Creek Location</p>	3	AMR CDF KMF SMCF	
Apr 08 <i>IR 10S074</i>	<p>A vehicle, and its deceased driver who had been missing since January of 2010, was located down a steep embankment along Highway 9 on District Land.</p> <p>Preserve Saratoga Gap Location Off Hwy. 9</p>	1	CHP	1 1

Tuesday, February 15, 2011

OCCURRENCES OF SPECIAL INTEREST 2010

Page 8

DATE	PUBLIC SUMMARY	Rangers	Other Agency	#Staff
Apr 09 <i>IR 10F101</i>	A subject was reported by numerous visitors to be riding a bicycle in a prohibited area on District Land. A District Ranger found the cyclist after a lengthy search. The cyclist was contacted but refused to stop and fled the area. The subject was not relocated. Preserve Rancho San Antonio Location & Chamise Trail	1		
Apr 13 <i>IR 10F120</i>	A visitor went hiking, and upon his return found his vehicle had been vandalized. It appeared that the vehicle had been dragged for a few feet. In addition foot prints were left on the hood and both windshield wipers had been ripped off. Preserve Rancho San Antonio County Park Location	1		
Apr 19 <i>IR 10S085</i>	A neighbor called to report hearing motorcycles in the preserve. District Rangers contacted the San Mateo County Sheriff's Office, and a deputy responded. The resident ranger was called out from his employee home. A motorcycle was seen entering the preserve at gate CM10 and exiting via the Steam Donkey Trail into Wunderlich County Park. Rangers were unable to contact the motorcyclists. Preserve El Corte de Madera Creek Location CM10	3	SMCSO	
Apr 22 <i>MA 10F116</i>	A District Ranger observed a motorcyclist standing next to a small fire on the shoulder of Foothill Blvd. The ranger used an extinguisher to put out the fire. Preserve Location Foothill Blvd. NB just south of I280	1	SCCF	
Apr 25 <i>IR 10S092</i>	A bicyclist fled after a ranger attempted to stop him for being in a "bicycle closed area" of the preserve. District Rangers contacted the bicyclist after he had hid his bicycle in the preserve and was attempting to leave the preserve on foot. The rangers informed him they found a bicycle that they were taking into evidence. The bicyclist admitted it was his bicycle and that he had been riding in the closed area. The suspect was cited for being in a closed area and released with his bicycle. Preserve Windy Hill Location	2		
May				
May 01 <i>IR 10F121</i>	District Rangers found two illegally constructed trails that included jumps, cut trees, and hidden tools near the dead-end of the Novitiate Trail. Preserve St. Joseph's Hill Location	1		
May 13 <i>IR 10F137</i>	An individual was found to have apparently attempted suicide by lacerating both wrists. He was contacted by a District Ranger who noticed the damage to his wrists. The individual stated he had consumed a fifth of vodka, and 20 aspirin. The ranger called for assistance. Santa Clara County Sheriff Deputies responded, and the subject was transported to a Hospital for treatment and mental evaluation. Preserve Bear Creek Redwoods Location returning to vehicle	1		
May 14 <i>IR 10F138</i>	Three individuals were cited for closed area violations. One of the individuals, who was carrying potting material, fertilizer, and weed killer was additionally cited for possession of cultivation tools. The subjects denied that they were growing marijuana, but said they were planting flowers and killing weeds. Preserve Sierra Azul - Rancho de Guadalupe Location Gate SA30	3	SCCSO	3

Tuesday, February 15, 2011

OCCURRENCES OF SPECIAL INTEREST 2010

Page 9

DATE	PUBLIC SUMMARY	Rangers	Other Agency	#Staff
May 20 <i>IR 10S105</i>	A burglary occurred at a District rental residence in the preserve. Several pieces of jewelry were stolen that have an estimated worth of over \$100,000, along with some computers and a safe containing personal files. Preserve Monte Bello Location 1185 Skyline Blvd. Residence	3	CASP PAPD	
May 23 <i>IR 10F151</i>	A District Ranger discovered a vehicle parked outside the gate leading to Cherry Springs Pond in the Rancho de Guadalupe area. The vehicle belonged to a suspect who had been known to be uncooperative in the past. Two individuals were found fishing. Both suspects fled. A second ranger tried to get the suspects to stop, but one fled off trail. Numerous Santa Clara County Sheriff Deputies arrived, and attempted to locate the suspect, but were unsuccessful. Since previous contact had been made with the individuals, and the ranger knew the identification of the suspects, contact was made at the suspect's home with deputies. One person was cited for a closed-area violation, and another person was cited for closed-area and resisting a peace officer violations. Preserve Sierra Azul Location Cherry Pond	3	SCCSO	2 6
May 25 <i>AR 10F154</i>	One subject was riding on the "eyebrow" of the upper embankment of the Jones Trail and fell, landing on the right side of his face. He suffered facial lacerations, severe tissue damage to his nose and right ear. The individual was also spitting out blood and shivering uncontrollably. District Rangers evaluated and treated the patient until he could be transported by paramedics from the accident scene by land ambulance. Preserve St. Joseph's Hill Location	2	AMR SCCF SCCP	2 3 1
June				
Jun 09 <i>MA 10F172</i>	A District Ranger reported a suspicious vehicle that had been parking at the same location over the previous four days. Santa Clara County Sheriff Deputies responded. The occupant refused to exit the vehicle when asked to do so. The deputy convinced the individual to exit the vehicle, and the ranger watched the suspect while the deputy searched the vehicle. After completing the search, the deputy had the individual leave the area. The individual was on probation and had a history of methamphetamine use. Preserve Location Hicks Road, across from SA29	1	SCCSO	1
Jun 10 <i>IR 10S120</i>	District Rangers responded to reports of off-road motorcycles on public roads near El Corte de Madera OSP. They proceeded to the area and observed two motorcycles exiting the preserve. A ranger attempted to make a stop, but both motorcyclists fled, and neither was apprehended. Preserve El Corte de Madera Creek Location CM04-1/2	2		
Jun 16 <i>IR 10F184</i>	One subject was stopped and cited for a possession of, and discharging a weapon. The weapon was a "potato gun" which launches potatoes using compressed gas or butane. Preserve Rancho San Antonio County Park Location Picnic area	3		
Jun 17 <i>IR 10S126</i>	An individual initially refused to sign a citation for a dog off leash violation, claiming she "had about an hours worth of questions" before she would sign. The ranger issuing the citation contacted his supervisor who instructed him to call for San Mateo County Sheriff Deputies. The suspect signed the citation and was released. Preserve Windy Hill Location Spring Ridge Trail	1		

OCCURRENCES OF SPECIAL INTEREST 2010

DATE	PUBLIC SUMMARY	Rangers	Other Agency	#Staff
Jun 26 <i>MA 10S132</i>	<p>A motorcycle northbound on Highway 35, lost control and crashed into an embankment just south of gate WH01. The patient was transported to the Windy Hill Picnic Area to a waiting helicopter, but was pronounced dead on the scene.</p> <p>Preserve</p> <p>Location Hwy. 35 200' south of WH01</p>	4	CDF CHP SMCSO WF	3 2
Jun 26 <i>IR 10S133</i>	<p>A visitor contacted District Rangers who were involved in providing care at a fatality motorcycle accident near gate WH01. The visitor informed the rangers that her mother was possibly having a heart attack a short distance down Spring Ridge Trail.</p> <p>The daughter stated she was a medical doctor (OB/GYN). The patient was assessed & treated by CAL FIRE and taken to Skyline Boulevard, where she was transported by AMR to Stanford Medical Center.</p> <p>Preserve Windy Hill</p> <p>Location Spring Ridge Trail</p>	1	CDF WF	
Jun 28 <i>IR 10S137</i>	<p>District personnel responded to a report from CAL FIRE of smoke in the area below the Saratoga Summit Fire Station. The fire was knocked down by helicopters and aircraft doing water and fire retardant drops. Ground access was made by a CAL FIRE dozer through Long Ridge OSP onto private property where the fire was located. District personnel assisted with suppression efforts by being lookouts, scouting access to the fire, and by staffing the District water truck throughout the incident.</p> <p>Staff remained on duty overnight until 4:00 PM the next day. The fire was estimated to be approximately 1/2 to 1 acre of heavy brush. CAL FIRE personnel saw evidence of camping in the area during their initial attack. The next day while checking on the status of the fire, District Staff discovered a large marijuana garden. The marijuana garden was reported to the Santa Cruz County Sheriff Office who eradicated approximately 3,000 plants on the Friday after the fire.</p> <p>During the fire operation approximately 400 to 500 feet of the Achistaca Trail in Long Ridge was cleared by CAL FIRE bulldozers to create access for fire units to get to the fire. Rehabilitation efforts are underway, and the Achistaca Trail will be closed until rehabilitation work is completed.</p> <p>Preserve Long Ridge</p> <p>Location Off site, area below Saratoga Summit Fire Station</p>	4	CASP CDF	3
Jun 30 <i>IR 10S138</i>	<p>A motorist notified District Staff of six cows wandering on Page Mill Rd. District Rangers and OST's assisted in clearing the cows off the roadway. CHP and Animal Control responded to assist. The cattle entered Coal Creek and later Russian Ridge OSPs. Staff contacted the grazing lessee who responded and was able to corral the cows the next day and confirm they were his cows. Several other cow escapes were reported over the next week. Staff again assisted in recapturing and returning the cows. A break in the fence was eventually located and repaired by the grazing lessee.</p> <p>Preserve Coal Creek</p> <p>Location Page Mill Rd.</p>	3	SMCSO SCCSO	1 1
Jun 30 <i>IR 10S140</i>	<p>A residential burglary was discovered by the District's Maintenance Supervisor at a District rental residence in the preserve. A vehicle was stolen along with various household items. The resident was on vacation and was notified of the burglary. The residence is in a remote location, behind a locked gate. The gate had been pulled off it's hinges to provide access. San Mateo County Sheriff Deputies responded and investigated.</p> <p>Preserve Russian Ridge</p> <p>Location 20300 Skyline Blvd. Residence</p>	2	SMCSO	2

July

OCCURRENCES OF SPECIAL INTEREST 2010

Page 11

DATE	PUBLIC SUMMARY	Rangers	Other Agency	#Staff
Jul 04 <i>IR 10S142</i>	<p>A structure fire adjacent to both Russian Ridge and Coal Creek OSP threatened the wildland. Along with two CAL FIRE engines, District Staff was first on scene, and provided traffic control until San Mateo County Sheriff Deputies arrived and took over. A CAL FIRE aircraft and helicopter attacked the fire from the air. A small spot fire occurred on the Russian Ridge OSP side of the highway but was quickly contained. District Rangers patrolled both preserves to check for spot fires. Both Russian Ridge and Coal Creek OSPs were closed and reopened the next day.</p> <p>Preserve Russian Ridge</p> <p>Location 20365 Skyline Blvd. - Off-site vicinity of Russian Ridge & Coal Creek</p>	6	CDF PAF SMCSO	1
Jul 04 <i>IR 10F207</i>	<p>District Rangers heard a motorcycle coming up the Jones Trail at St. Joseph's Hill OSP. One of the rangers attempted to make contact, but the rider turned around and headed in the opposite direction. Los Gatos Police were requested, but were cancelled when it became apparent the suspect had fled the area.</p> <p>Preserve St. Joseph's Hill</p> <p>Location Novitiate Trail to intercept</p>	2		
Jul 05 <i>IR 10S143</i>	<p>District Rangers spotted lights from two motorcycles in the preserve after hours. Staff was unable to locate the motorcycles, but found fresh tracks. The area was checked again the next morning, and a contractor stated he had seen fresh tracks and oil which had leaked onto the ground.</p> <p>Preserve Russian Ridge</p> <p>Location Mindego Ranch Area</p>	3		
Jul 14 <i>IR 10F213</i>	<p>Multiple violations of the District's "Vehicles Prohibited" ordinance occurred when motorcycles entered the preserve. Three subjects were cited and released.</p> <p>Preserve Sierra Azul</p> <p>Location Cothran Road</p>	2		
Jul 18 <i>IR 10S152</i>	<p>Four individuals, including two juveniles, were cited for smoking in the Skyline Ridge OSP. In addition, warnings were given for possession of alcohol, and marijuana. The adults were warned for providing alcohol to minors.</p> <p>Preserve Thornewood</p> <p>Location Dennis Martin Creek</p>	2		
Jul 18 <i>MA 10S153</i>	<p>District Rangers assisted at an off-site fatality bicycle accident on Highway 9 near Saratoga Gap OSP by establishing a helicopter landing zone, and assisting with traffic control.</p> <p>Preserve</p> <p>Location Hwy. 9 above Redwood Gulch</p>	2	AMR CDF CHP SCCF SCCSO	1 1 1 2 1
Jul 22 <i>MA 10S158</i>	<p>An attempted sexual assault/theft/kidnapping with the use of gun was committed off site. Radio traffic was copied about the event, and District rangers responded to Castle Rock State Park to meet with the Incident Commander. The subject is still at large and is suspected of also being involved with illegal marijuana growing. A "BOL" (Be On The Lookout) was put out to all local enforcement jurisdictions.</p> <p>Preserve</p> <p>Location Castle Rock State Park</p>	3	CASP CHP SCCSO SCCP SCRCO	1 1 1 1 1
Jul 22 <i>IR 10F227</i>	<p>Two subjects were stopped and warned for being in a closed area at Bear Creek OSP. One of the individuals was wearing a full CHP uniform which appeared unusual to the ranger. The same individual was later arrested for impersonating a police officer in Atascadero.</p> <p>Preserve Bear Creek Redwoods</p> <p>Location</p>	2		

Tuesday, February 15, 2011

OCCURRENCES OF SPECIAL INTEREST 2010

DATE	PUBLIC SUMMARY	Rangers	Other Agency	#Staff
Jul 28 <i>IR 10F235</i>	At Rancho San Antonio County Park an individual was contacted as he returned to his vehicle. The individual matched the description of someone who, on previous visits, had jumped out of the bushes and scared women. The individual had numerous notes taped on the dashboard and steering wheel, some of which made mention of ammunition and swords. Two knives were observed by the District Ranger when the suspect opened his vehicle. Santa Clara County Sheriff Deputies responded and warned the individual about his inappropriate behavior prior to releasing him. Preserve Rancho San Antonio County Park Location	1		
August				
Aug 03 <i>IR 10S173</i>	Three visitors with alcohol in their possession were observed by District Rangers inside the preserve. Alcohol had also been given to a minor. None of the individuals had valid driver's licenses with them. No record of their drivers' licenses could be found when records were checked through radio communications. One individual stated he had driven his father's car, without permission, and without a valid driver's license. Two of the individuals were cited, and all three were released to take a taxi home. Preserve Monte Bello Location Stevens Creek Nature Trail	2		
Aug 08 <i>MA 10S175</i>	A car was being driven westbound on Highway 9 when the driver experienced difficulties with it's acceleration. The driver pulled off to the side of the road, saw something dripping from the engine and suddenly flames appeared from under the hood, which quickly engulfed the whole vehicle. District Rangers arrived on the scene and took protective actions. No one was injured in the incident. Preserve Location Hwy. 9, 1/2 mile east of Hwy. 35 (Saratoga side of the ridge)	2	CHP SCCF	1
Aug 13 <i>IR 10S180</i>	A person was observed releasing a rattlesnake near the Fault Trail. He stated that he had caught the snake at his home. He was given a verbal warning and educated on why it is not appropriate to relocate wildlife in District Preserves. Preserve Los Trancos Location Near the Interpretive (Fault) Trail	1		
Aug 14 <i>IR 10S205</i>	A neighbor reported hearing shots in the area of the lower flank of Mindego Hill, just below Mindego Lake. The following day a dead deer, that had been shot in the head, was found on the neighbor's property. Preserve Russian Ridge Location Below Mindego Lake	1		
Aug 24 <i>IR 10F271</i>	A fire occurred approximately 30 feet off Pheasant Road in the Rancho De Guadalupe Area at a location known as "dumpers corner", which has a notorious history of illegal garbage dumping. The fire burned approximately 300 feet up a gully shaded by bay trees and was extinguished by fire suppression personnel. Preserve Sierra Azul - Rancho de Guadalupe Location Pheasant Road	2	CDF SJF SCCP	15 15 1
Aug 25 <i>IR 10S199</i>	Active marijuana cultivation was located by San Mateo County Sheriff during a flyover earlier in the month. District staff assisted by showing access to the area. Approximately 1,634 plants were confiscated. District staff will coordinate with the Sheriff Office for the cleanup. Preserve Windy Hill Location Site accessed from Middle Rd. water tank facility	1	SMCSO	1

OCCURRENCES OF SPECIAL INTEREST 2010

DATE	PUBLIC SUMMARY	Rangers	Other Agency	#Staff
Aug 26 <i>IR 10F272</i>	Verbal altercations occurred involving inappropriate comments between a dog walker and a bicyclist. The dog walker said altercations between dog walkers and bicyclists on the preserve were ongoing and escalating. Preserve St. Joseph's Hill Location	1		
September				
Sep 03 <i>IR 10F289</i>	A District ranger located and cited three juveniles who were trying to hide by trespassing on McQueen's Ridge, adjacent to the former Almaden Air Force Base. The subjects all admitted to being on the base. One of the individuals stated he had taken some rope from the base as a souvenir. Preserve Sierra Azul - Mt. Umunhum Location Air Force Base	3		
Sep 06 <i>IR 10S208</i>	An attempted break in occurred at the former Sherrill property. The renter contacted a neighboring resident District Ranger to inform her of the situation. The ranger had already contacted Palo Alto Police because she had been woken by someone trying to break into her District Residence. When the ranger had turned the outside floodlights on she had seen a person with a flashlight walking toward the barn and tree farm. Five Palo Alto Police units responded, and searched the area with District rangers. They were unable to locate a suspect. Preserve Monte Bello Location Rental Residence	2	PAPD	5
Sep 08 <i>MA 10S209</i>	A resident District Ranger was awakened by sirens in the South Skyline Area, and scanned for emergency traffic. A structure fire had extended into a wildland fire in the Portola Heights area. District Staff responded and were cancelled after confirming that no District Land was involved. It was determined a long time Portola Heights resident lost his home in the fire. Preserve Location Long Ridge Road, Portola Heights Area	2	CDF WF	1 2
Sep 21 <i>IR 10F306</i>	Santa Clara County Sheriffs responded to a suspicious death. The area was investigated and the victims body was removed by the Santa Clara County Coroner's office. Preserve Bear Creek Redwoods Location BC05	2	F&G CDF SCCF SCCSO	1 4 4 2 1
October				
Oct 08 <i>IR 10F322</i>	A model airplane caught fire in Rancho San Antonio County Park and was extinguished with no threat to vegetation. Preserve Rancho San Antonio County Park Location	1		
Oct 16 <i>IR 10S239</i>	District Staff responded with lights and siren after receiving a request from California State Parks to backup a ranger in Portola Redwood State Parks who had two subjects with guns illegally climbing in the park. The subjects were cited and released. Preserve Long Ridge Location LR13	2	CASP	2

OCCURRENCES OF SPECIAL INTEREST 2010

Page 14

DATE	PUBLIC SUMMARY	Rangers	Other Agency	#Staff
Oct 18 <i>IR 10S242</i>	A naked runner was contacted by a District Ranger after the runner was seen running in view of Highway 35. He stated that he thought it was OK to be naked in open space. He was told to put on clothes, cited, and released. Preserve Skyline Ridge Location Equestrial lot, just inside pipe gate	3		
Oct 27 <i>IR 10S248</i>	District rangers discovered an illegal trail off Highway 9 on the former Foster/Girdner property. A possible associated vehicle was run for registration. The rangers went on foot patrol in the area and found sections of the illegal trail still under construction. They were unable to locate the owner of the vehicle or anyone else possibly associated with the illegal trail construction. Preserve Saratoga Gap Location 1/4 mi north of Redwood Gulch Rd. in a closed area of SG OSP in the Foster Girdner area	2		
Oct 31 <i>IR 10F343</i>	A visitor riding her bike uphill when she was bitten by a dog on leash. She described the dog as a Collie/Sheppard mix, rust and black colored and overweight. She said the dog did not initially display any signs of aggression but was sniffing her leg when it suddenly bit her, breaking the skin and putting a hole in her pants. Rangers were unable to locate the dog after searching the area. They put out a BOL ("Be on the Lookout") to surrounding public agencies and San Jose Animal Control. Preserve St. Joseph's Hill Location near the intersection with Flume	2		
November				
Nov 06 <i>IR 10S254</i>	A runner fell into a tree, injured both wrists, hit her face, and possibly lost consciousness. District Rangers were first on scene and provided medical care to the patient. The victim was transported to the Skyline Ridge Parking Lot where CAL FIRE paramedics treated her. The patient was airlifted to a hospital. Preserve Skyline Ridge Location Chestnut Orchard	4	CDF CALSTAR SCRCF	1 1 1
Nov 13 <i>IR 10F354</i>	Four subjects were contacted on the Mount Umunhum Air Base and cited for violation of a being in a "Hazardous Closed Area". Preserve Sierra Azul Location Former Almaden Air Force Base (Mt. Umunhum)	2		
Nov 13 <i>IR 10F353</i>	Four subjects were stopped and cited for possession and discharging of paint ball guns. Preserve Sierra Azul Location	3		
Nov 14 <i>MA 10S271</i>	Two motorcyclists were shot with pellets while driving along Highway 35 in front of the North Ridge Parking Lot. The victims suffered minor injuries to the hand and knee. San Mateo County Sheriff Deputies took two male juveniles into custody, along with two pellet guns. Preserve Off District Lands - Skyline Location Hwy. 35 near Purisima Creek OSP	1	CDF CHP SMCSO	1 1 1

Tuesday, February 15, 2011

OCCURRENCES OF SPECIAL INTEREST 2010

DATE	PUBLIC SUMMARY	Rangers	Other Agency	#Staff
Nov 30 <i>IR 10S270</i>	District Staff discovered approximately 25 trees along Portola Road, on District Land just north of the entrance to the Portola Road Parking Lot, which had been illegally topped. Believing it was done to improve the view of the private residence on the east side of the road, the Skyline Area Superintendent contacted the property owner as well as the staff of the Town of Portola Valley. Thus far, he has been unable to get anyone to take responsibility for the topping of the trees. <i>Preserve</i> Windy Hill <i>Location</i> Along Portola Valley rd.	2		
December				
Dec 06 <i>MA 10S288</i>	A person who appeared to be "under the influence" flagged down a District Ranger who determined the individual might be a hazard to themselves. The ranger requested a San Mateo County Sheriff deputy and ensured the person's safety until a deputy arrived, and took him into custody. <i>Preserve</i> <i>Location</i> Crazy Pete's Road & Hwy. 35	2	SMCSO	2
Dec 12 <i>MA 10S276</i>	District Rangers were notified by a person who was roller skating with a dog, who advised them he had been short at with a paint-ball gun coming from a passing vehicle on Purisima Creek Road. The victim was hit on the left wrist. The vehicle described was turned over to San Mateo County Sheriff for their report. <i>Preserve</i> Off District Lands - Skyline <i>Location</i> Purisima Creek Road	1	SMCSO	1
Dec 19 <i>IR 10S284</i>	A visitor found a marijuana grow site in lower Devil's Canyon on an adjacent private property. The information has been relayed to the San Mateo County Drug Task Force. The visitor stated he found a few plants still standing along with tools and pesticide. <i>Preserve</i> Long Ridge <i>Location</i> Off District Lands - Skyline	1	SMCSO	1
Dec 20 <i>IR 10S283</i>	A visitor was cited and released by a District Ranger for urinating in the middle of the trail.. <i>Preserve</i> Long Ridge <i>Location</i> Peters Creek Trail	1		
Dec 25 <i>MA 10F379</i>	A ranger was stopped in the Stevens Creek Market parking lot by a person who claimed he had been hit by a store clerk. The ranger requested Santa Clara County Sheriff to respond. Another District Ranger arrived fires and assisted in keeping the two parties apart until deputies arrived. <i>Preserve</i> Off District Lands - Foothills <i>Location</i> Stevens Creek Market, 10629 S. Foothill Blvd.	2	SCCSO	3
Dec 31 <i>IR 10S289</i>	A visitor was off-loading a horse when it kicked her in the head, slamming her into the inside wall of the horse trailer. She sustained injuries to the back of her head, forehead and nose. A witness saw her run out from the trailer and was able to help her get to his vehicle while he summoned help. District Rangers were first on scene and stabilized the patient until she was transported to Stanford Hospital. <i>Preserve</i> Skyline Ridge <i>Location</i> Equestrian lot	3	CDF SMCSO WF	1 1 1

OCCURRENCES OF SPECIAL INTEREST 2010

DATE

PUBLIC SUMMARY

Rangers Other Agency #Staff

KEY

Helicopter - Law Enforcement

Santa Clara County Coroner

Santa Clara County Roads

Santa Clara Valley Water District

AMR AMR - Ambulance

CALSTAR Cal Star

CASP CA State Parks

CDF CAL FIRE

CHP CHP

F&G CA Det. Of Fish & Game

KMF Kings Mountain Fire

PAF Palo Alto Fire

PAPD Palo Alto PD

SCCF Santa Clara Co Fire

SCCP Santa Clara County Parks

SCCSO Santa Clara Co SO

SCRCF Santa Cruz Co Fire

SCRCSO Santa Cruz Co SO

SJF San Jose Fire

SMCF San Mateo Co Fire

SMCSO San Mateo Co SO

WF Woodside Fire

TEN YEAR FIELD ACTIVITY SUMMARY

	2001	2002	2003	2004	2005	2006	2007	2008	2009	2010
A. VIOLATIONS										
1.Bike-closed area	62	60	63	89	58	94	89	52	89	76
2.Bike-speed	82	101	93	146	113	92	89	80	94	67
3.Bike-helmet	159	135	152	187	124	157	166	146	155	129
4.Bike-night riding	39	5	25	13	24	18	12	12	23	13
5.Bike - Unsafe Operation	1	3	4	0	0	0	0	1	1	1
6.Dogs - prohibited	40	52	72	72	55	61	94	117	119	114
7.Dogs-off leash	111	129	168	188	131	199	228	174	215	217
8.Off road vehicle	27	18	34	28	21	17	8	19	15	38
9.Closed area	17	31	53	66	59	77	60	89	72	113
10.After hours	76	106	183	137	197	147	188	185	231	209
11.Fishing	2	6	10	10	12	4	5	0	2	3
12.Vandalism	57	58	62	44	83	53	52	31	34	11
13.Parking	505	267	233	196	219	262	225	242	237	125
14.Parking after hrs.	262	366	414	392	267	320	380	306	321	293
15.Dump/litter	6	4	15	18	14	20	26	5	14	8
16.Campfires	5	1	4	3	6	7	6	1	5	0
17.Camping	2	1	8	16	22	11	6	8	4	18
18.Weapon contact	6	1	24	13	6	14	6	10	8	11
19.Weapon report	8	4	8	2	2	3	1	8	0	2
20.Weapon - Evidence of	6	2	3	4	3	2	3	8	3	2
21.Other	53	114	105	103	184	176	144	85	79	118
Total	1,526	1,464	1,733	1,727	1,600	1,734	1,788	1,579	1,721	1,568
B. ACCIDENTS/FIRE										
1.Bicycle	37	31	28	29	19	20	29	30	40	25
2.Equestrian	3	7	7	3	3	2	3	4	1	2
3.Hiking/Running	22	10	16	12	14	11	20	26	22	21
4.Other first aid	13	12	10	9	16	17	13	13	22	10
5.Search & rescue	10	12	7	10	10	13	9	8	9	11
6.Vehicle	12	6	7	10	8	5	8	1	11	7
7.Helicopter landings	9	10	6	7	4	1	5	4	3	2
8.Fire	6	6	1	5	3	6	7	5	7	6
Total	112	94	82	85	77	75	94	91	115	84
C. ENFORCEMENT										
1.Citations	845	761	882	955	727	1028	1072	506	507	558
2.Parking Citations								470	467	386
3.Written warnings	570	518	640	629	501	483	584	472	637	491
4.Arrests	7	3	2	1	8	3	1	7	1	2
5.Police assistance	27	37	38	30	18	18	13	25	29	19
Total	1,449	1,326	1,562	1,615	1,254	1,532	1,670	1,480	1,641	1,456
D. CRIMES										
1.Auto burglaries	21	14	5	34	31	14	8	23	4	5
2.False information	4	1	3	13	6	6	2	5	2	2
3.Resisting Peace Officer	9	5	18	7	4	6	9	7	9	6
4.Assault	2	2	0	0	0	2	3	3	1	0
5.Poaching	1	0	1	0	0	2	1	0	1	0
6.Possession/Cultivation - Marij	9	10	14	9	17	21	15	23	14	11
7.Minor in possession of Alchoh	12	3	0	11	4	9	8	25	0	9
8.Other	12	18	16	42	77	22	11	21	16	54
Total	70	53	57	116	139	82	57	107	47	87
E. MUTUAL AID										
1.Accidents	28	38	38	3	31	38	48	51	48	45
2.Enforcement	12	14	11	20	14	8	5	16	12	9
3.Fire	8	4	2	8	3	5	4	4	4	7
4.Helicopter landings	9	11	7	1	9	2	2	10	5	6
5.Other	3	3	8	2	5	3	8	3	2	9
Total	60	70	66	34	62	56	67	84	71	71

Appendix B.2

VIOLATIONS with at least 5 occurrences

VIOLATIONS

	2001	2002	2003	2004	2005	2006	2007	2008	2009	2010
MROSD - 701.1(c) - Leash required - Dog	110	132	167	194	128	205	231	179	216	217
MROSD - 805.3 - After hours	105	101	189	132	198	156	168	206	232	209
MROSD - 502.3(a) - Helmet required	164	135	155	188	119	151	153	142	156	125
MROSD - 701.1(b) - Dog in prohibited area	39	50	70	70	55	62	78	114	128	107
MROSD - 502.1 - Closed area - bicycle	49	58	64	78	49	74	75	58	84	76
MROSD - 500.1 - Trail use speed limit	88	100	95	145	117	85	89	85	103	67
MROSD - 805.2(a) - Enter temporary/regular cl	24	44	55	78	66	87	65	80	53	66
MROSD - 805.2(b) - Enter sensitive/hazardous					7	14	4	10	22	47
MROSD - 404.2 - Smoking - undesignated area			7	7	15	15	21	20	30	45
MROSD - 801.1(l) - Prohibited Areas (Nondesig		1		23	53	46	39	41	39	39
MROSD - 802.1 - Vehicles prohibited				4			4	1	3	38
MROSD - 400.1 - Camping without permit		2	8	12	7	13	9	12	13	16
MROSD - 805.4 - Bicycle after hours			25	13	26		5	8	25	13
PC - 602.8(a) - Trespass										12
MROSD - 702.1 - Damaging / removing plants								1		12
MROSD - 410.1 - Alcoholic beverages-beer/win				3	4		12	11	2	9
MROSD - 703.1 - Unlawful defacement								1		9
PC - 148(a)(1) - Resist, Obstruct, Delay Peace O				2	3	10		3	10	9
PC - 594(b)(2)(A) - Vandalism, damage < \$400										9
PC - 374.4 - Littering				2	4	6	5	1	8	8
CVC - 21212(a) - Minor bicycling without helm										7
MROSD - 403.1(b) - Possession of/discharging										7
MROSD - 703.2 - Unlawful construction								1		6
MROSD - 408.2 - Permit Required		2								6
H&S - 11357(b) - Possession of Marijuana - < a								1		6
MROSD - 602.1 - Harvesting / planting without										6
MROSD - 408.4 - Failure to comply with permit										5
B&P - 25662(a) - Minor in Possession of Alcoho										5
PC - 459 - Burglary										5

PARKING

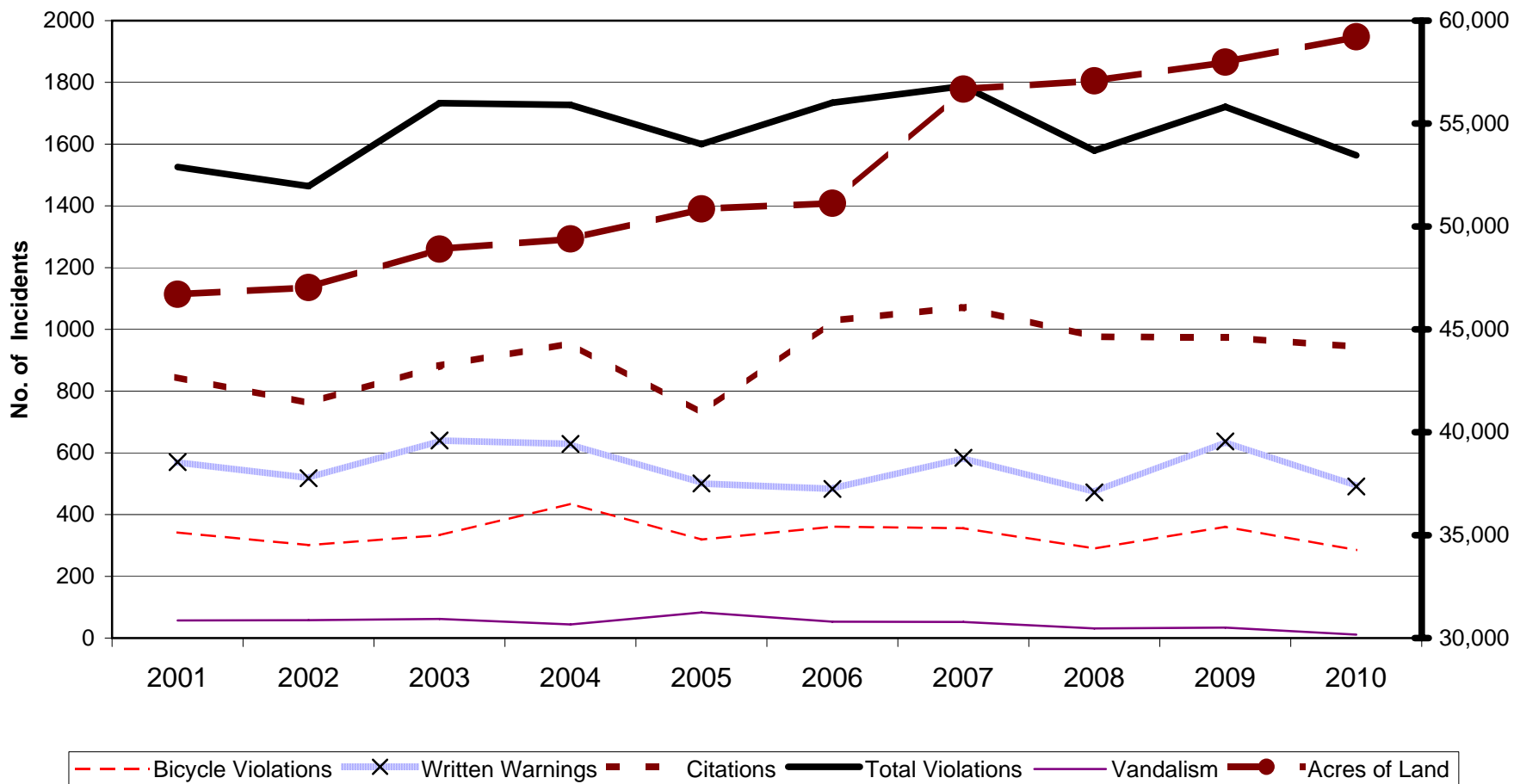
MROSD - 801.1(i) - Prohibited Areas (After hou	263	368	347	313	223	341	286	309	326	293
MROSD - 801.1(d) - Prohibited Areas (Blocking				18	15	21	14	16	12	22
MROSD - 801.1(a) - Prohibited Areas (Signed)	453	232	175	170	69	73	86	86	68	19
MROSD - 801.1(k) - Disabled Parking: Permit R				4	4	5	6	2	6	14
SCC - B12-120 - No parking				8	23	14	9	16	9	12
MROSD - 801.1(b) - Prohibited Areas (On fire tr				4	4	6	2	7	5	12
CVC - 22507.8(a) - Disabled Parking – Paved/M		1	9	5	6	13	6	7	21	10
SM CO - 7.30.010 - No Parking Zone										10

Tuesday, February 15, 2011

Appendix B.2

VIOLATIONS with at least 5 occurrences	2001	2002	2003	2004	2005	2006	2007	2008	2009	2010
CVC - 22505(b) - Parking – State Highway				10	20	2	10	9	6	9
MROSD - 801.1(h) - Prohibited Areas (Red curb	88	33	34	19	11	9	12	18	15	7
MROSD - 801.1(f) - Prohibited Areas (Blocking t				6	9	11	6	14	9	6

District Enforcement Activities Ten Year History



Accidents By User Type

