



Midpeninsula Regional
Open Space District

R-14-08
Meeting 14-08
March 12, 2014

AGENDA ITEM 9

AGENDA ITEM

Calendar Year 2013 Field Enforcement Activity Report and Ten-Year Field Activity Summary

GENERAL MANAGER'S RECOMMENDATION

Receive a presentation about the Calendar Year 2013 Miscellaneous Enforcement Activity Summary and the Ten-Year Field Activity Summary.

SUMMARY

This report provides a summary of the enforcement and emergency response activities on District lands. Detailed information about activities which occurred in calendar year 2013 is provided, with historical information about the preceding nine years provided for perspective.

The total violations on District property (including both District Ordinances and non-District Ordinances) increased by 17.9% over calendar year 2012.

	2012	2013	% Change
District Ordinance Violations	1,604	1,890	17.8%
Non District Violations	153	182	19.0%
Total Violations	1,757	2,072	17.9%

DISCUSSION

Since April 1995, staff has provided the Board written monthly reports on emergency incidents and enforcement activities on District land. At the end of each calendar year, the Board receives a summary for that year as well as a comparison with previous years.

Information for this year's report was generated from the Incidents Database, which was placed in service for data collection on January 1, 2010. In reviewing changes from prior years, it is important to understand that differences in record keeping systems can account for different counts in the violations.

Before 2010, the creation of this report primarily relied on manual data collection methods, which were more prone to error and had more limited data collection capabilities. For 2009, and prior years, data was imported from the old system. Work continues to refine the database to collect the desired information and improve the presentation of data and analysis from the system.

Three summaries are presented for Board review: the CY2013 Miscellaneous Enforcement Activity Summary (Appendix A); the Ten-Year Field Activity Summary (Appendix B.1); a summary of the actual violation codes, listed in order of frequency of occurrence (Appendix B.2). Note that information for prior years in Appendix B.2 is not necessarily complete. Graphical representation of trends is shown in appendices C and D.

The Miscellaneous Enforcement Activity Summary (Appendix A) lists for the past year, contacts made or reports taken by staff of potentially serious, violent, or other criminal activity on or near District land. This is not a comprehensive list of incidents but reflects incidents of special interest or concern. Events which posed special concern for ranger safety or were unusual in nature are included.

The Ten-Year Field Activity Summary includes violations of District Land Use Regulations, emergency responses, criminal activity, and mutual aid incidents. Only contacts that resulted in some form of written record, such as a District incident report, written warning, citation, or mutual aid assistance report have been included in these summaries. General assistance to preserve visitors, informational contacts, and verbal warnings have not been included.

Trends and Issues

The most notable statistic is the 17.9% increase in violations, primarily violations in District Ordinances, from CY2012 to CY2013. Staff believes that several factors have contributed to this; most significantly the lack of rain experienced from October through December encouraged more people to be engaged in outdoor activities, and/or on a more frequent basis.

Parking-After-Hours violations increased from 378 violations in 2012 to 455 in 2013. 314 of those violations occurred in Rancho San Antonio. Overall 619 parking citations were issued in 2013, of which 403 were issued in Rancho San Antonio.

Total bicycle violations reversed the downward trend which started in 2007 by increasing by 36.7% over 2012. Bicycle in closed area violations decreased, but all other categories (speed, helmet and night-riding) increased as shown in the table below.

	2004	2005	2006	2007	2008	2009	2010	2011	2012	2013
A. VIOLATIONS										
1.Bike-closed area	89	58	94	89	52	89	76	70	80	62
2.Bike-speed	146	113	92	89	80	94	67	72	59	90
3.Bike-helmet	187	124	157	166	146	155	129	91	78	142
4.Bike-night riding	13	24	18	12	12	23	13	17	17	39
Total Bicycle Violations	435	319	361	356	290	361	285	250	234	333

Bicycle accidents continued the increase started last year, but only increased from 34 in 2012 to 36 in 2013. The highest year for bicycle accidents was 2009 when 40 accidents occurred. Appendix D provides graphical information on accident trends for different user groups.

Dog violations (off leash dogs, and dogs in prohibited areas) increased significantly from a combined total of 286 violations in 2012 to 383 in 2013. The combined average for both violations over the 10 year period is 291 violations per year.

The number of off-road vehicle incidents has been noted in the last few years' reports. These incidents reach a high of 38 in 2010. In 2012 there were 27 incidents, which decreased to 17

incidents in 2013. Additional efforts were made in 2012 and 2013 to deter this activity.

Violations of District ordinances continue to be the main issues which District rangers deal with. The most common violations are illustrated in Appendix B.2. The most common violations continue to be after-hours use and off-leash dog violations. Violations which involve people or dogs being in areas where they are prohibited (Entry to Closed Area, Dog in Prohibited Area, and Closed Area – Bicycle) also continue to occur frequently.

Staff believes that there are a number of factors which contributed to the increased number of violations seen in the last year. The lack of rain in the fall of 2013, combined with an increased number of available staff, are probably contributory factors. See Appendix C for a graphical representation of the data. During the last 10 years the number of visitors, the number of acres managed by the District, and the number of ranger positions have all increased.

FISCAL IMPACT

No fiscal impact is anticipated from the acceptance of this information.

PUBLIC NOTICE

Public notice was provided by the Brown Act. No further notice is required.

CEQA COMPLIANCE

This proposed action is not a project under the California Environmental Quality Act and no environmental review is required.

NEXT STEPS

Staff will continue to actively enforce District regulations, encourage all users to act in a manner which provides for the protection of the natural resources, and allows for the safe and enjoyable use of the preserves by all visitors.

Appendices:

- Appendix A - 2013 Miscellaneous Enforcement Activities
- Appendix B1 - Field Activity Summary
- Appendix B2 - List of Frequent Violations
- Appendix C - Chart - District Enforcement Activities – Ten Year Summary
- Appendix D - Chart - Accidents by User Type

Responsible Department Head:

Brian Malone, Acting Operations Manager

Prepared by:

Gordon C. Baillie, Management Analyst II

Appendix A

OCCURRENCES OF SPECIAL INTEREST 2013

Page 5

DATE	PUBLIC SUMMARY	Rangers	Other Agency	#Staff
January				
Jan 05 <i>IR 13S003</i>	A District ranger investigating an illegal bike trail in the preserve saw a duffel bag stuffed into the crook of a tree in a closed portion of the preserve. The duffel bag contained canned food and gear, possibly a marijuana cultivation food supply drop. The area was searched but no other evidence was found. The supplies were taken to the Skyline Field Office for disposal. Preserve Saratoga Gap Location Near Hwy. 9 call box SC-09-021	1		
Jan 12 <i>IR 13S013</i>	District rangers were requested to respond to a 911 call to help a bicyclist being threatened by a dog. The bicyclist was unable to pass a large dog that was barking aggressively near the preserve gate. The rangers checked the area and found the bicyclist, but the dog had left. The visitor stated the dog was blocking the Coal Creek Trail near the house above the gate. The owner of the dog has been contacted numerous time by the Area Superintendent regarding complaints about there dog, and warned that the dog must be contained or on a leash and under control. The owner assured the rangers the dog would not be a problem in the future. Preserve Coal Creek Location Coal Creek Gate CC03	2		
Jan 15 <i>IR 13F019</i>	A repeat violator who has a history of interfering with District Rangers fled from a ranger and a supervising ranger who were attempting to stop him for an after-hours use violation. The subject fled down the trail. Assistance was requested from the Los Gatos Police Department. The trail was searched but the person was never located. Preserve Off District Lands - Foothills Location Lexington Reservoir County Park	2		
Jan 21 <i>IR 13F026</i>	An encroachment was discovered along Mt. Umunhum Road in Sierra Azul OSP. A resident on Mt. Umunhum Road was found to have cut a fence to gain access with his motorcycle on an unauthorized trail. An "Area Closed" sign had been removed, two small jumps were built, and about 1/2 mile of trail was being used by the motorcycle. Real Property was contacted regarding the encroachment. Preserve Sierra Azul Location Mt. Umunhum Road	2		
Jan 21 <i>MA 13S021</i>	A District ranger was first on scene of a traffic accident involving two vehicles. One vehicle lost control and veered into an oncoming vehicle. There were four individuals involved: two patients had moderate injuries and two patients had major injuries. District rangers provided patient care, assessment and traffic control. The injured were transported by helicopter and ground ambulance. Preserve Off District Lands - Skyline Location Hwy. 35, approx. .5 mi south of Rapley Ranch Rd.	4	CHP LHFD SMCF SMCSO	1 3
Jan 25 <i>AR 13S022</i>	The Skyline Area Superintendent located an at-risk woman reported by dispatch in a vehicle in the Skyline Ridge parking lot. She had overdosed on prescription drugs. When asked how many pills she had taken she responded over 10 pills. San Mateo County sheriff ordered a 72 hour psychiatric hold and she was transported to a hospital. Preserve Skyline Ridge Location Parking lot	3	CDF SMCSO	2

OCCURRENCES OF SPECIAL INTEREST 2013

Page 6

DATE	PUBLIC SUMMARY	Rangers	Other Agency	#Staff
Jan 25 <i>MA 13S023</i>	District rangers were first on-scene of a vehicle accident. The driver lost control and rolled the vehicle. When the rangers arrived the driver was walking around. He declined any medical assistance, but a ranger still requested fire and CHP. The driver denied drinking alcohol, but there was an open container beside the overturned car. The driver was evaluated by Fire. The driver was arrested for driving under the influence by CHP and the vehicle was removed by a tow company. Preserve Off District Lands - Skyline Location Hwy. 35, 1/2 mile north of Hwy. 9	3	CHP	2
February				
Feb 05 <i>IR 13F050</i>	A Santa Clara County Park Ranger reported a suspicious vehicle with two occupants at the preserve parking lot. Deputies responded and a search of the suspicious vehicle found possible stolen items as well as tools consistent with vehicle break-ins. There were also hypodermic needles and a methamphetamine pipe found in their possession. One individual was cited and released for the needles. Ownership of the pipe could not be determined. Preserve Sierra Azul Location Jacques Ridge Parking Lot	2	SCCP SCCSO	1 3
Feb 06 <i>IR 13F054</i>	District Rangers discovered two individuals in a closed area of the preserve with an air rifle. One person was cited for possession of the rifle. The rangers also located a shooting bench and target area constructed out of wood. The two people contacted said that those items were already present when they arrived. Preserve Sierra Azul Location (just off)	3		
Feb 06 <i>MA 13S032</i>	District rangers monitored radio traffic about an individual who was at risk and possibly near the Saratoga Gap Open Space Preserve. A ranger located a vehicle which was reported to be associated with the individual in the Saratoga parking lot at the intersection of Highways 9 and 35. As the ranger approached he observed the person crossing into the California State Parks Skyline-to-the-Sea trail. Rangers proceeded to scout the trail and located the individual walking toward them. He had a cut on his upper arm and was covered with blood. The man said he "was out here trying to kill myself" and that he had a knife in his back waistband. The knife was located and removed for safety. The rangers bandaged the wound. A suicide note was found in the patient's possession. The individual was transported to a medical center and placed under 72 hour psychiatric observation. Preserve Off District Lands - Skyline Location Hwy. 9: Castle Rock SP, Saratoga Toll Rd. Trail; Skyline-to-the-Sea Trail	3	AMR CASP CDF SCCSO SCRCO	1
Feb 17 <i>IR 13F066</i>	A District Ranger on foot patrol at the Preserve attempted to stop a bicyclist on a closed trail. The bicyclist immediately fled down the trail into the town of Saratoga. Two other rangers and Santa Clara County Deputies searched the area but were unable to locate the violator. Preserve Fremont Older Location Parker Ranch Trail	3	SCCSO	3
Feb 18 <i>IR 13S040</i>	A visitor reported that he had discovered shoes, some deteriorated clothing, human bones, and a skull. The visitor escorted the rangers and deputies to the site. The remains were documented by the coroner's office and taken into possession. Currently there is no identification for the subject. Preserve Purisima Creek Redwoods Location North side of Purisima Creek, adjacent to Purisima Creek Rd.	2	SMCCOR SMCSO	1 2

OCCURRENCES OF SPECIAL INTEREST 2013

Page 7

DATE	PUBLIC SUMMARY	Rangers	Other Agency	#Staff
Feb 20 <i>IR 13F069</i>	Two people had their dogs off leash, in the off leash area. When one dog ran up to greet the other dog one of the owners yelled at the other to get his dog away. The owner who had yelled then swung a stick at the dog, and hit the other owner in the back of the head as he bent down to get his dog. District rangers met the victim of the assault in the preserve parking lot, and observed a lump approximately 1" in diameter on the back of the victim's head. San Mateo Sheriff's deputies were called. The victim declined medical care and declined to press charges. Neither of the dogs were injured. Preserve Pulgas Ridge Location Off leash area	3	SMCSO	2
Feb 22 <i>MA 13S042</i>	A District ranger was first on scene of a vehicle accident involving a truck and a car. The truck travelling south hit gravel losing control and T-boned the car that was travelling north. The victim in the car was trapped (the doors would not open) and complained of lower back pain and was in shock. The ranger provided scene assessment, provided oxygen and checked vitals of the driver who was transported by ground to a local hospital. The driver of the truck stated he was not hurt. Preserve Off District Lands - Skyline Location Hwy. 35 at Stillheart, North of Hwy. 84	4	AMR CDF CHP SMCSO	 2 2
Feb 23 <i>MA 13S046</i>	A District ranger was first on-scene at a bicycle accident. The rider went over the handle bars, landing on his face and right shoulder. The patient suffered facial injuries, a broken collar bone, a broken bone at the base of the skull, and fractured ribs. Rangers stabilized the patient and set up landing zone at Russian Ridge. The patient was transported by helicopter to a local hospital. Preserve Off District Lands - Skyline Location Hwy. 35, 1/4 mi north of cluds rest Rd.	4	AMR CDF LIFE SMCSO	 2 1
Feb 25 <i>IR 13F076</i>	A District ranger was issuing a citation for a dog off leash violation when a another individual ran by, swore, and yelled at the ranger. The individual then slowed down, looked back and said "You remember me, right?" This particular individual is well know to the ranger staff, since he has an outstanding warrant for his arrest for previous incidents where he has spit on rangers and punched a patrol truck. This individual was not stopped and left the preserve. Preserve St. Joseph's Hill Location	1		
March				
Mar 02 <i>IR 13F078</i>	Nine subjects were stopped for possession of and discharging BB guns. Of those, six were issued citations and three received warnings. Preserve Pulgas Ridge Location Dusky Footed Woodrat Trail	3		
Mar 06 <i>IR 13F085</i>	An unlawful construction violation occurred on District property near the boundary with an adjacent property. The illegally constructed trail leads from the homeowner's backyard down to Hale Creek. This area is a steep south facing hillside. There is a large flat area with a picnic table about half way down. The trail consists of earthen steps dug into the steep hillside. Where the trail approaches the homeowner's property, the homeowner has apparently installed some tiles and appears to be formalizing the path. This matter was referred to the Real Property Specialist in charge of encroachments. Preserve Rancho San Antonio Location La Loma Dr. Boundary	2		

OCCURRENCES OF SPECIAL INTEREST 2013

DATE	PUBLIC SUMMARY	Rangers	Other Agency	#Staff
Mar 10 <i>AR 13S058</i>	<p>A District ranger was flagged down by a bicyclist reporting an accident on the Manzanita Trail. The patient was suffering from a head injury, with altered mental status. The witnesses stated that the patient had lost control of her bike and was propelled forward landing on her face and hitting her head on the ground. She was unconscious for several minutes according to her riding companion.</p> <p>The ranger requested fire to respond to the scene who hiked down the trail with oxygen and medical equipment. When the ranger found the patient she was being assisted by two hikers who were trying to walk the patient out. After evaluation the patient was placed on a wheeled litter and carried out of the preserve. The patient was transported by helicopter to a local hospital.</p> <p>Preserve El Corte de Madera Creek Location Manzanita Trail</p>	1	LIFE SMCF	3
Mar 12 <i>IR 13F091</i>	<p>While on foot patrol, a District ranger who was checking the fenced boundary with the homeowner's property saw that a ten-foot segment of fence had been removed. Previous visits had shown the homeowner had cut the fence post wide enough to admit a horse or ATV. Vegetation has now been cleared sufficient to allow passage of a vehicle. In addition, a drainpipe system of white PVC pipe covered with cut sections of Oak tree trunk had been constructed from the pond across the boundary. The encroachment has been turned over to the Real Property Specialist.</p> <p>Preserve El Sereno Location Preserve & adjacent property boundary</p>	1		
Mar 13 <i>IR 13S060</i>	<p>District rangers observed two bicyclists riding on a closed trail. Both riders tried to flee after numerous orders from the rangers to stop. One finally stopped and came back toward the ranger. The other attempted to ride into a creek where a second ranger stopped him. Both were cited and released.</p> <p>Preserve Purisima Creek Redwoods Location Whittemore Gulch Trail</p>	2		
Mar 22 <i>AR 13F110</i>	<p>An injury bicycle accident occurred in the preserve. One subject was riding his bicycle and rode off the trail into a drainage culvert, landing on his head and sustaining a spinal injury. He stated that he couldn't feel anything below his waist. Several agencies responded to assist with treatment and prepare the patient to be transported by helicopter to hospital.</p> <p>Preserve Fremont Older Location Seven Springs Loop Trail</p>	4	LIFE RM Amb. SCCF SCCSO	2 2 8 2
Mar 29 <i>IR 13F119</i>	<p>An individual was stopped for riding his bicycle in a closed area. The person was not cooperative with District rangers and had to be ordered to dismount from his bicycle six times. He provided false information, and refused to sign the citation. Santa Clara County Sheriff's deputies were requested. The individual decided to comply when he was advised that deputies were in route. He was issued a citation for the closed area violation, and warned about providing false information and failing to cooperate.</p> <p>Preserve Rancho San Antonio Location P.G.& E. Trail</p>	3	SCCSO	2
Mar 31 <i>IR 13S077</i>	<p>While on patrol, a District ranger observed a vehicle in a prohibited area. The driver stated he was testing a new axle on his SUV. The ranger could smell marijuana coming from the inside of the vehicle. Marijuana cigarette butts were in the ash tray. The driver stated he was not allowed to smoke at his home. He produced a marijuana prescription card and said he did not know it was expired. He was cited for vehicles prohibited and for possession of less than an ounce of marijuana and was released.</p> <p>Preserve Skyline Ridge Location Grassland off parking lot</p>	2		

April

OCCURRENCES OF SPECIAL INTEREST 2013

DATE	PUBLIC SUMMARY	Rangers	Other Agency	#Staff
Apr 01 <i>IR 13S080</i>	<p>A District ranger encountered a hiker with her dog off leash. The ranger informed the owner that dogs must be on leash and to leash the dog. She called the dog numerous times but the dog ignored her, ran up to the ranger and jumped on him scratching the ranger's neck. The ranger warned the owner that he would have to pepper spray the dog if she could not control it. After numerous attempts to leash the dog, the owner finally did. She claimed "the dog has never acted this way before" and that "the dog would never hurt or bite anyone." The owner was cited for dog off leash and warned for nuisance dog and released.</p> <p>Preserve Thornewood Location Dennis Martin Cr. Trail</p>	1		
Apr 05 <i>IR 13F125</i>	<p>A District ranger saw two people carrying large rolls of black plastic irrigation tubing in the preserve. Irrigation tubing is often used for marijuana grow sites. The ranger notified the Santa Clara County Sheriff's Marijuana Eradication Team.</p> <p>Preserve Sierra Azul - Rancho de Guadalupe Location Sierra Azul - Rancho de Guadalupe</p>	1		
Apr 14 <i>IR 13F147</i>	<p>A visitor reported two objects on the trail which he believed might be explosive devices. The visitor said he worked in construction and that the devices looked similar to those he used in his trade for blasting rock. District rangers closed off the trail, and Santa Clara County Sheriff's bomb squad responded. A District ranger searched the area in cooperation with the bomb squad and found two additional devices hidden in an adjacent rock formation. A "flash test" was done on the contents of one of the objects, which had broken open. The contents did not ignite. All of the devices were removed for off-site testing.</p> <p>Preserve Rancho San Antonio Location Quarry Trail</p>	4	SCCSO	1
Apr 14 <i>AR 13F148</i>	<p>An injury bicycle accident occurred in the park. A bicyclist fell from while descending toward the gate and suffered a possible left femur fracture. She was treated by Santa Clara County Fire and transported to hospital.</p> <p>Preserve Rancho San Antonio County Park Location Hammond-Snyder Loop Trail</p>	1	RM Amb. SCCF SCCSO	2 3 1
Apr 17 <i>IR 13S091</i>	<p>A District ranger was flagged down by two bicyclists who reported a verbal altercation with a motorist. The driver of the car yelled for them to slow down, claimed that he was a law enforcement officer, and that he had a gun. The ranger requested San Mateo Sheriff to respond to Skeggs Point on Skyline Blvd. The deputy conducted a quick interview with the two bicyclists, and they left the area. The motorist was stopped and searched at gate CM01A. No firearms were found. It was established that he was the owner of the communications tower property adjacent to El Corte de Madera Preserve. He was warned against making threats to other preserve users and was released.</p> <p>Preserve El Corte de Madera Creek Location Road from gate CM01A</p>	2	SMCSO	1
Apr 20 <i>AR 13S105</i>	<p>On April 22, a District ranger was informed by a neighbor/bicyclist of a bicycle accident on April 20, 2013. The injured party walked out of the preserve and did not report the incident to the District. Several hours after the accident, he experienced symptoms and called his riding companion (who is a doctor) and was transported to a hospital with a suspected ruptured spleen. The ranger followed up the incident and contacted the father of the victim, who as of April 24 was still in the hospital.</p> <p>Preserve Long Ridge Location Chesnut Trail</p>	1	CDF WFD	

OCCURRENCES OF SPECIAL INTEREST 2013

Page 10

DATE	PUBLIC SUMMARY	Rangers	Other Agency	#Staff
Apr 21 <i>AR 13S102</i>	<p>During a volunteer project a District volunteer collapsed probably due to heat exhaustion. District rangers were requested to respond to the scene where they provided patient assessment. The rangers were initially unable to find a pulse on the patient, and his blood pressure was extremely low. The rangers requested a response from Fire and Paramedics. The victim was given oxygen by District staff. Paramedics gave the patient an intravenous saline drip. The patient's blood pressure increased and he was able to breathe easier. The victim was believed to be suffering from heat exhaustion and was transported by ambulance to a local hospital.</p> <p>Preserve Skyline Ridge Location Equestrian lot</p>	4	CASP CDF WFD	1 2
Apr 23 <i>IR 13S103</i>	<p>Outdoor education leaders at the Nature Center observed two men fishing from the dam. District rangers were requested to respond and observed the men fishing. When the men saw the patrol truck they attempted to flee the area and were stopped a short distance away near the Russian Ridge parking lot. When contacted one of the men stated his identification was in his vehicle. When the vehicle door was opened the ranger smelled a very strong marijuana odor and informed the man he was going to search the car. The ranger found marijuana and hash oil and contacted San Mateo County sheriff to respond to the scene. The deputies stated they were not going to pursue the marijuana possession. Both men were cited for "fishing prohibited" and released.</p> <p>Preserve Skyline Ridge Location Alpine Pond</p>	2	SMCSO	2
Apr 27 <i>AR 13F162</i>	<p>District rangers were dispatched to a report of a man feeling weak and dizzy. Upon arrival they found a man who said he was hiking down a long steep section of trail when he started to feel exhausted, weak, and dizzy. A District ranger transported firefighters from Santa Clara County Fire to the patient's location. Upon examination the patient was found to have a very low blood sugar level. The Santa Clara County Fire paramedic who examined him said that his blood sugar was so low that it was amazing he was still alert and oriented. It was his opinion most patients would have been semi-conscious or unconscious. The patient was given two tubes of glucose and transported to hospital.</p> <p>Preserve Rancho San Antonio Location Windmill Pasture</p>	1		
Apr 28 <i>AR 13S112</i>	<p>A District ranger responded to a report from Mountain View dispatch of a bike rider needing transport out of Portola State Park. San Mateo County sheriff stated they were extended and could not respond. Dispatch reported that the patient was on the Old Haul Road with a State Park ranger. When the District ranger arrived the patient was laying on the ground by himself.</p> <p>The patient stated that a stick had become stuck in his front tire causing him to crash into a redwood tree. The patient stated he had pain in his upper arm, shoulder, and collar bone area, and they were painful to touch. The accident was probably in Pescadero County Park on a trail closed to bicycles based on the patient's description. The patient and his companion had walked out to Portola State Park to the Old Haul Road. The District ranger provided primary and secondary assessment, monitored the patient, and provided oxygen until fire arrived. The patient was transported to the ground ambulance, and taken to the hospital.</p> <p>Preserve Off District Lands - Skyline Location Butano Fire Trail/Old Haul Rd.</p>	2	AMR CASP SMCF	2 1

May

OCCURRENCES OF SPECIAL INTEREST 2013

Page 11

DATE	PUBLIC SUMMARY	Rangers	Other Agency	#Staff
May 05 <i>IR 13S117</i>	<p>A District ranger on patrol observed three vehicles entering the preserve parking lot at a rate of speed which sent up a large cloud of dust.</p> <p>The ranger drove towards the equestrian parking lot and saw one vehicle stopped near the entrance and another stopped near the signboard, surrounded by a cloud of dust. As the ranger approached he saw a third vehicle slide to a stop inside the cloud of dust. The ranger attempted to stop the vehicles, but they accelerated past his patrol truck and headed out of the parking lot and left southbound on Highway 35. The ranger followed at a safe distance and flagged down a CHP motorcycle officer at Saratoga Gap.</p> <p>The ranger told the officer about the incident and the CHP officer proceed down Highway 9. Two of the cars were stopped by CHP about four miles down. The District ranger cited the driver of the vehicle he tried to stop in the parking lot for reckless driving and fleeing a peace officer. CHP cited the 2nd vehicle for crossing the yellow line. Both were released. The third vehicle was not located.</p> <p>Preserve Skyline Ridge Location Equestrian parking lot</p>	1	CHP	1
May 05 <i>MA 13S115</i>	<p>A District ranger was notified of a report of a fire at Heather Heights Road. Two Skyline rangers responded to the scene and assisted responding fire units with information on the best route to the fire scene. One ranger was assigned as a lookout. The fire was not on District land. The fire was extinguished by Cal Fire.</p> <p>Preserve Off District Lands - Skyline Location Heather Heights</p>	2	CDF SCCF	
May 11 <i>AR 13F180</i>	<p>Passerby said they found the subject lying on a flat area of the trail with his bicycle between his legs, unconscious. The patient remained unconscious during the incident. District Rangers worked with Santa Clara County Fire and LifeFlight Helicopter to treat and airlift the patient to a nearby medical center. The patient had a high heart rate, and experienced seizures during the air transport.</p> <p>Preserve Sierra Azul Location</p>	3	LIFE RM Amb. SCCF	3 2 6
May 18 <i>AR 13S129</i>	<p>Rangers responded to a call of a bicyclist down. A witnesses stated that the victim was late joining their group at a predetermined location. One of the group went back on the trail and found the victim on the ground and called for help. Several of the cycling group performed CPR on the patient.</p> <p>Cal Fire was first on scene and took over CPR. Rangers assisted with patient care and transport of equipment, investigation, and coordinating with the CalStar helicopter. The patient was pronounced deceased at the scene and the coroner responded and removed the body.</p> <p>Preserve El Corte de Madera Creek Location North Leaf Trail</p>	5	CDF CALSTAR KMFD SMCCOR SMCSO	3 1 2
May 23 <i>IR 13F193</i>	<p>The Santa Clara County Marijuana Eradication Team (MET) advised a District ranger that they had raided a marijuana plantation, and had eradicated 1,200 plants. A suspect was also arrested during the raid, with the assistance of a K9 unit. MET members also advised that there had been pollution and streambed violations. District staff are following up with MET for further information and remedial actions.</p> <p>Preserve Sierra Azul Location In a drainage between Cherry Springs Pond & Hicks Creek Ranch</p>	2	SCC MET	5

OCCURRENCES OF SPECIAL INTEREST 2013

DATE	PUBLIC SUMMARY	Rangers	Other Agency	#Staff
May 26 <i>IR 13F197</i>	<p>While on patrol, one District Ranger was advised of a call of a model airplane in the Preserve that had caught fire but had been extinguished. The owner said he had "soft landed" his model airplane in the lower meadow area when the lithium polymer battery shorted and caused a fire with a flame length of 1 to 1.5 feet. An area of about 5' x 10' had burned. The pilot said another visitor had used a fire extinguisher to put out the fire. The ranger used his pumper unit to saturate the burned area, and put a scratch line around the burn site.</p> <p>Preserve Rancho San Antonio County Park Location</p>	1	SCCF	3
May 31 <i>IR 13S142</i>	<p>A District ranger on patrol was contacted by the Skyline Field office that a bicyclist on Page Mill Rd. had found a bag of possible marijuana seeds. He said he had taken a break from riding and noticed the bag sitting on a rock. He immediately recognized the seeds as marijuana from his experience as a probation officer. The seeds were taken into custody by the ranger and entered into evidence to be destroyed or turned over to the appropriate law enforcement agency.</p> <p>Preserve Los Trancos Location Off Page Mill Rd.</p>	1		
May 31 <i>IR 13S153</i>	<p>A District ranger was called by a San Mateo County Deputy, who informed District staff of an event which had occurred in a closed area.</p> <p>San Mateo County deputies had received a call from a District tenant, who had reported a having contact with a male trespasser on the preserve. The trespasser was in camouflage clothing and wearing a gun on his hip. Two of the witnesses who spoke Spanish talked to man who stated that he was lost and had shot at a buck (but missed). The trespasser was informed that he was trespassing and that hunting was prohibited. The tenant directed him toward the highway. He was later seen, minus the gun and camouflage, on the property again. The tenant re-contacted the sheriff's office who arrived approximately seven minutes later and interviewed the trespasser. He was later released.</p> <p>Preserve Miramontes Ridge (Formerly Mills Creek) Location Madonna Creek Ranch</p>	2	SMCSO	1
June				
Jun 08 <i>AR 13F219</i>	<p>District rangers monitored a dispatch for Santa Clara County Fire to respond to the Picchetti Winery Tasting Room for a subject who had collapsed. Responders were informed by the patient's husband that she had collapsed and had been unconscious for approximately 20 seconds. During the call the patient continued to vomit and appeared unwell. The subject said she had a history of vertigo. Despite being urged by paramedics, the patient refused further treatment. She signed an AMA form and left with her husband.</p> <p>Preserve Picchetti Ranch Location Winery</p>	2	RM Amb. SCCF SC VFD	2 3 2
Jun 09 <i>AR 13F221</i>	<p>A 12 year old girl was reported missing within the Preserve. A mother reported she and her daughter were on a hike together and had a disagreement. The daughter had walked away from the mother and disappeared from sight.</p> <p>Mountain View dispatch contacted District rangers who responded and contacted the mother. Additional resources were requested to search for the missing girl. District Rangers, Deputies from Santa Clara County Sheriff, Rangers from Santa Clara County Parks all became involved in the search. The girl was found on a trail two hours after the start of the search. 13 responders were involved in the search.</p> <p>Preserve Rancho San Antonio Location Trail above creek at permit parking lot</p>	6	SCCP SCCSO	2 7

OCCURRENCES OF SPECIAL INTEREST 2013

DATE	PUBLIC SUMMARY	Rangers	Other Agency	#Staff
Jun 12 <i>IR 13F228</i>	<p>A marijuana eradication event occurred in the preserve. One suspect was arrested and one fled. The teams destroyed approximately 6,200 marijuana plants, and restored the flow in a stream that was diverted with three check dams.</p> <p>Preserve Sierra Azul Location Reynolds Road</p>	1	F&G SCC MET	1 3
Jun 13 <i>AR 13F225</i>	<p>A group of friends were hiking when a man in the group stopped and said he felt dizzy. He was helped to the ground, took a deep breath, and went unconscious. The friends called for help, and started CPR when they determined that the patient was not breathing.</p> <p>District rangers and Santa Clara County Fire were dispatched. Upon arrival District rangers continued CPR and administered oxygen. District rangers also assisted County Fire with access to the patient. County Fire paramedics provided advanced medical care, but the patient was non-responsive and was declared deceased at the scene. Santa Clara County Sheriff's deputies, and the Coroner's Office, responded, investigated and removed the deceased with District staff's assistance.</p> <p>Preserve Fremont Older Location Hayfields Trail</p>	4	RM Amb. SCCO Coroner SCCF SCCSO	2 1 5 3
Jun 16 <i>IR 13F232</i>	<p>A visitor reported that she had been involved in a dispute over a parking space with another visitor a few days beforehand. During the dispute the other woman had made several comments which led the victim to believe that the other person was a regular visitor.</p> <p>Upon arriving home the victim found that her vehicle had been vandalized. A report was taken, and staff are watching for the possible suspect, since the vehicle was reported as being distinctive.</p> <p>Preserve Rancho San Antonio County Park Location Equestrian Parking Lot</p>	1		
Jun 22 <i>IR 13S163</i>	<p>A District ranger on foot patrol on the Ridge Trail, observed four hikers smoking below him on the Charquin Trail. One of the group bent down and tried to light the grass in the middle of the trail on fire. The ranger stopped the men who handed over cigars, a lighter, and a small baggie with less than an ounce of marijuana. One of the men also handed over metal "brass knuckles." Possession of this weapon is a misdemeanor.</p> <p>An additional District ranger and a State Park ranger met the group just below the Ridge Trail intersection. San Mateo County sheriffs were also requested. Two of the men could not be identified through checks with Mountain View dispatch. One individual admitted that he was in the country illegally, and one stated that he was in the process of becoming a citizen. The Sheriff's deputy arrived and assisted. All four of the suspects were cited for smoking prohibited and additionally one was advised that the District would be requesting prosecution for the possession of metal knuckles. One subject was warned for attempting to light a fire. All were then released.</p> <p>Preserve Russian Ridge Location Chargin Trail</p>	3	CASP SMCSO	1 1
Jun 23 <i>AR 13F237</i>	<p>A bicyclist was riding a new bicycle. He said that he was going about 25 MPH when he may have hit a rock causing him to crash and land on his left side. He sustained abrasions to his left shoulder and knee as well as a possible fracture or dislocation to his left hip. He was treated on site and then transported by helicopter to a nearby hospital.</p> <p>Preserve El Sereno Location Aquinas Trail</p>	1	LIFE RM Amb. SCCF	3 2 9

OCCURRENCES OF SPECIAL INTEREST 2013

DATE	PUBLIC SUMMARY	Rangers	Other Agency	#Staff
Jun 24 AR 13S167	District rangers monitored a call on the Santa Clara Fire frequency of a body recovery in the area of Highway 9 and Highway 35. Rangers responded and determined the vehicle had travelled into the Saratoga Gap preserve off of Highway 9, resulting in a fatality. Rangers coordinated with fire and law enforcement in the recovery of the body and vehicle. Santa Clara Fire was travelling down Highway 9 when they saw a flash of red down off the road. They turned around to investigate and discovered the truck crushed, on its roof and could see that there was a body inside. District rangers, fire and law enforcement proceeded with the recovery. The coroner was requested and responded. She determined that the accident had happened approximately 12 hours prior to the discovery of the deceased. Preserve Saratoga Gap Location Area of Hwy. 9 and Hwy. 35	3	CDF CAL TRANS CHP SCCO Coroner SCCF	4 2 3 1 4
Jun 28 MA 13S172	A District ranger drove up on the scene of an injured mountain lion. A passing motorist reported to Cal Fire that had been on a down power/line fire call and stopped on the road. The mountain lion seemed to have injuries to the hind legs/back. Fish and Game were requested and arrived and had to dispatch the animal due to the nature of its injuries. Preserve Off District Lands - Skyline Location Stevens Canyon Road	1	F&G CDF SCCSO	1 1
Jun 30 IR 13S177	A vehicle collided with the fence along Highway 84 frontage. A District ranger responded and found the driver attempting to leave the scene. The ranger stopped the driver, who admitted to hitting the fence. San Mateo County Sheriff's and CHP responded to the scene and the driver was arrested for driving under the influence. Approximately 40 feet of wooden fence was damaged. Preserve La Honda Creek Location Hwy. 84 along Red Barn area	1	CHP SMCSO	1 2
July				
Jul 02 MA 13S182	A District Ranger drove up to a motorcycle accident on Highway 35. A passing motorist notified Cal Fire at the Saratoga Summit Fire Station. The motorcyclist had lost control while driving at a high rate of speed, left the road, and collided with a tree. Cal Fire began CPR and the patient was transported to the Skyline Ridge Open Space Preserve parking lot landing zone. Life Flight personnel continued CPR, but were unable to revive the patient. He was pronounced dead at landing zone. Preserve Off District Lands - Skyline Location Hwy. 35 100 yards north of Gate MB06	1	CDF CHP LHFD LIFE	4
Jul 02 IR 13S180	Members of the District Crew on Skyline notified District Rangers of a large amount of debris dumped at the preserve parking area. They stated there was identifying information included in the debris. A District Ranger contacted a person who stated he had hired a contractor to remove and dispose of debris and had at least one receipt from Recology Waste Disposal for a dumped load. That contractor had hired a subcontractor to haul away a load of materials destined for the Goodwill Store in Redwood City. District employees cleaned up and disposed of the items dumped at the preserve. The subcontractor agreed to pay for all costs related to disposing of the dumped materials. Preserve Purisima Creek Redwoods Location Redwood parking lot	1		
Jul 05 IR 13F250	Two visitors called to report finding marijuana plants and gardening supplies. The visitors said that they observed six plants in buckets, as well as garbage bags and fertilizer near the plants. The two witnesses emailed District Rangers pictures they had taken of the plants, which staff will use for further reports and notification of the appropriate law enforcement agency. Preserve Sierra Azul Location In the area of SA08	1		

OCCURRENCES OF SPECIAL INTEREST 2013

DATE	PUBLIC SUMMARY	Rangers	Other Agency	#Staff
Jul 13 <i>MA 13S190</i>	<p>A District Ranger exiting the Skyline Field Office observed a vehicle turn from Page Mill Road onto Skyline Blvd. The vehicle travelled 200-300 feet in the southbound direction, however they were driving completely in the northbound lane. The vehicle finally entered into the proper lane but drifted toward two bicyclists. At the last minute the driver swerved and just missing hitting the bicyclists. While following the vehicle for approximately three miles, the ranger saw the vehicle cross over the double yellow center line five times. The speed limit along Skyline Blvd. is 55 mph. The driver never went over 35 MPH. The ranger requested a response from CHP. The driver finally pulled over at the Grizzly Flat parking area.</p> <p>The ranger made contact with the driver who seemed disoriented, asking what road he was on and to show him on the map he provided. A Supervising Ranger was requested as well as Cal Fire to check out the occupants physical condition. Both the driver and the passenger were elderly.</p> <p>CHP arrived requested a tow truck to tow the vehicle and transport the driver and passenger to their home. CHP stated they would be contacting DMV regarding the incident to evaluate the driver's fitness to retain a driving license.</p> <p>Preserve Off District Lands - Skyline Location Hwy. 35/Grizzly Flats parking area</p>	2	CDF CHP	2 1
Jul 15 <i>IR 13S193</i>	<p>The Skyline Field Office learned that San Mateo County Fire had been dispatched to a fire off Highway 84 near Half Moon Bay. The fire burned onto District land. A District equestrian bridge was used by a dozer to get to the fire location. There was some damage done to the bridge in the process. The dozer operator reported this to District Rangers. Cal Fire found evidence of marijuana cultivation. District Rangers canvassing the area found plastic tubing and garbage bags containing unknown material. No known suspects were found in the area.</p> <p>Preserve Miramontes Ridge (Formerly Mills Creek) Location Madonna Creek area</p>	2	CDF	
Jul 16 <i>AR 13S194</i>	<p>District Rangers responded to a report of a young boy who had impaled a bicycle part into his leg after crashing his bicycle. The boy had apparently lost control and went off the side of the trail. Rangers located the patient after questioning some visitors who were coming back from a hike. Santa Clara County Fire and medics responded to the scene and the patient was transported to a hospital by ambulance.</p> <p>Preserve Saratoga Gap Location Saratoga Gap Trail</p>	2	CASP CDF SCCF SCCP	
Jul 22 <i>IR 13S203</i>	<p>While opening the parking lots at Monte Bello and Los Trancos, a District Ranger discovered spent fireworks containers and debris covering the entire parking lot. The debris included a used box of mortar rounds as well as numerous illegal fireworks. The parking lot is surrounded by very dry brush and grass.</p> <p>During the previous night at approximately 11:40 PM a District Ranger who lives nearby had requested Palo Alto PD after hearing numerous bangs. The ranger was not able to see any fireworks. A citizen driving by had also called Palo Alto when they witnessed the fireworks. Palo Alto PD was not available to respond.</p> <p>Preserve Los Trancos Location Parking lot</p>	1		
Jul 25 <i>IR 13S208</i>	<p>District rangers on patrol heard voices coming from the Horseshoe Lake area. On foot patrol, they found 11 people having an outdoor birthday party. They stated that they had lost track of time, not realizing they were in violation of the official closing time. All 11 people were cited and released.</p> <p>Preserve Skyline Ridge Location Horseshoe Lake</p>	3		

August

OCCURRENCES OF SPECIAL INTEREST 2013

DATE	PUBLIC SUMMARY	Rangers	Other Agency	#Staff
Aug 01 <i>IR 13S220</i>	<p>A hiker reported to California State Parks that he had discovered a marijuana garden inside the District's Long Ridge Open Space Preserve. He stated he was hiking in the Devil's Canyon area looking for a climbing rock and came across an old grow site. He hiked further and found a path leading to an active grow site. District rangers and the San Mateo County Sheriff's Task Force scouted a small area and determined that it was a very large garden. The grow site was eradicated and cleaned up in cooperation with the San Mateo County Sheriff, Santa Clara County Sheriff, and California Fish and Wildlife.</p> <p>Preserve Long Ridge Location Devil's Canyon</p>	2	SMCSO	
Aug 04 <i>AR 13F287</i>	<p>An 81 year old man was walking up the trail in the preserve and fell backwards, possibly as the result of a medical episode. Two people nearby came to assist him and called 911. Mountain View dispatch notified District rangers who responded along with Santa Clara County Fire and Rural/Metro medics.</p> <p>The patient was concerned that he might be having a heart attack since he has a history of ventricular fibrillation and takes high blood pressure medication. The patient was transported by rangers to the waiting ambulance and then he was taken to the hospital.</p> <p>Preserve Picchetti Ranch Location Orchard Loop Trail</p>	4	RM Amb. SCCF	2 3
Aug 07 <i>MA 13S221</i>	<p>District Rangers were first on scene of a fatality vehicle accident. Rangers triaged the situation and provided initial medical aid and scene management for a vehicle accident involving two vehicles.</p> <p>One of the vehicles had over-corrected on a turn and collided with a second vehicle traveling in the opposite direction. One vehicle was overturned and the second vehicle crashed into an embankment. A passenger in one of the vehicles was deceased and the other two occupants were transported; one by helicopter and one by ground ambulance.</p> <p>Occupants of the second vehicle were released against medical advice. District rangers established a landing zone at the Windy Hill picnic area on Highway and provided traffic control.</p> <p>Preserve Off District Lands - Skyline Location Hwy. 35 at Windy Hill Gate WH01</p>	5	CDF CHP SMCF SMCSO WFD	1 1
Aug 09 <i>AR 13S225</i>	<p>A District Ranger on foot patrol discovered a backpack and jacket on a downed tree just off the trail. While investigating he discovered a male lying on the ground and unresponsive. The ranger immediately started to try rouse the man while requested fire and San Mateo County Sheriff deputies to respond.</p> <p>The ranger administered oxygen to the patient and monitored his breathing and pulse. A District Maintenance Supervisor arrived and assisted by directing the agencies through the gate at WH06 and to the accident site. The patient was treated at the scene by Fire and transported to a local hospital.</p> <p>The District was later notified by the brother of the victim, who complimented the rangers actions, which he attributed to his survival and recovery.</p> <p>Preserve Windy Hill Location Meadow Trail</p>	1	SMCSO WFD	1 3
Aug 10 <i>MA 13S226</i>	<p>A District ranger responded on a report of a suspicious vehicle in Upper Stevens Creek County Park, possibly associated with methamphetamine manufacturing. The ranger met with the reporting party (a nearby resident) and a County Park Ranger. Two Santa Clara County Deputies arrived and made contact with an individual who was inside the park illegally, and who had an outstanding warrant. The subject was arrested for the warrant. The ranger provided local information to assist the deputies.</p> <p>Preserve Off District Lands - Skyline Location Upper Stevens Creek County Park</p>	1	SCCP SCCSO	1 2

OCCURRENCES OF SPECIAL INTEREST 2013

DATE	PUBLIC SUMMARY	Rangers	Other Agency	#Staff
Aug 13 <i>MA 13S233</i>	<p>While on patrol, a District ranger discovered an ice cream container with about 2-3 pounds of an unknown white powder inside. Woodside Fire responded and the area was cordoned off. Old La Honda Rd. was closed for approximately one hour while the substance was tested in case it was a hazardous material. It was determined that the powder was sugar.</p> <p>Preserve Off District Lands - Skyline</p> <p>Location Old La Honda Road, Dennis Martin Creek Pull-out</p>	2	Belmont FD OES - SMC SMCSO WFD	
Aug 14 <i>IR 13F311</i>	<p>A District Ranger received an anonymous report of a marijuana grow occurring in the preserve. He was told by the witness they had also seen a food drop on the road. Details of the report were provided to the Santa Clara County Sheriff's office.</p> <p>Preserve Sierra Azul</p> <p>Location Loma Prieta Ranch</p>	1		
Aug 15 <i>IR 13F306</i>	<p>While on foot patrol, a District ranger saw fresh trail construction from a private property onto District property. The illegally constructed trail leads down to Hale Creek. This area is steep south facing hillside. There is a large flat picnic table about half way down. The trail consists of earthen steps dug into the steep hillside. The Real Property department was notified of the encroachment.</p> <p>Preserve Rancho San Antonio</p> <p>Location from backyard of 25313 La Loma</p>	2		
Aug 15 <i>AR 13F307</i>	<p>A District ranger and Santa Clara County Fire responded to assist a person who had fallen from a horse. The person was riding with a group on a horse she was unfamiliar with. The group was galloping up a hill when she lost her balance and fell off the horse. She injured the base of her spine when she hit the ground. She was treated at the scene and then transported by ambulance to the hospital.</p> <p>Preserve Picchetti Ranch</p> <p>Location Orchard Loop Trail</p>	1	RM Amb. SCCF	2 3
Aug 24 <i>MA 13S244</i>	<p>A District ranger was advised by a motorist that a vehicle had rolled over on Page Mill Road and that it appeared everyone was out of the vehicle. When the ranger arrived, three people from the vehicle stated there were no injuries. The vehicle was overturned. A short time later the driver started to drool and became unresponsive. San Mateo County Fire responded.</p> <p>The patient was c-collared, back boarded, and loaded into the ambulance. After further treatment the patient refused transport and left the ambulance against medical advice. CHP responded for investigation. No further action was taken.</p> <p>Preserve Off District Lands - Skyline</p> <p>Location Page Mill Road, 1/2 mile east of Hwy. 35</p>	3	CDF CHP WFD	
September				
Sep 01 <i>MA 13S253</i>	<p>A District ranger was first on-scene of a motorcycle accident where the rider attempted to pass a vehicle on a turn, lost control and crashed on the shoulder. The motorcyclist sustained injuries to his arms and left leg and complained of pain in his chest and head. His helmet came off when he struck the gravel. District rangers secured the scene, called for additional assistance, provided medical care and assisted with a helicopter landing zone. The patient was transported by ground ambulance to a landing zone, and then flown out by helicopter.</p> <p>Preserve Off District Lands - Skyline</p> <p>Location Hwy. 35, 3/4 mile south of Old La Honda Rd.</p>	4	CHP LIFE SMCF SMCSO	1 1

OCCURRENCES OF SPECIAL INTEREST 2013

Page 18

DATE	PUBLIC SUMMARY	Rangers	Other Agency	#Staff
Sep 08 <i>IR 13F346</i>	An individual was found doing illegal "hill climbs" on a motorcycle in the preserve. When stopped he claimed he was only there because he need to go to the bathroom. He was cited for a vehicles prohibited violation. Preserve Sierra Azul Location Loma Prieta	1	F&G	2
Sep 10 <i>IR 13S267</i>	The San Mateo County Narcotics Task Force discovered a marijuana grow site on District land during a flyover. A supervising ranger assisted with entry onto the site. A District water tank had been tapped into to bring water to the grow site. District open space technicians assisted with site cleanup, hauling out plants and various pieces of equipment. Further clean up and site restoration will be done this winter. Preserve Russian Ridge Location Downslope from Quam horse barn	1	SMC MET	
Sep 10 <i>MA 13S270</i>	A District ranger responded to the scene of a person having an allergic reaction from medication she had taken for depression. The ranger was requested by CHP to watch the subject. The ranger had a discussion with the subject, and during the conversation it became clear that the individual was having suicidal thoughts. The person said she had taken medication for depression which caused an adverse reaction. San Mateo County Fire arrived and took over patient care. Preserve Off District Lands - Skyline Location Russian Ridge Vista Point on Hwy. 35	1	CHP SMCF	1 1
Sep 11 <i>IR 13F349</i>	Two District rangers were starting a foot patrol when they saw a black bag laying on the hillside approximately three feet inside the Preserve. Upon opening the bag a shotgun was found. Santa Clara County Sheriff's Department was called to pick up the shotgun. A deputy took possession of the shotgun and booked it as found property. Preserve Sierra Azul Location SA02	2	SCCSO	1
Sep 14 <i>IR 13F354</i>	A woman was seen in the park after hours. When a District ranger attempted to stop the woman she fled. The ranger followed her and repeatedly told her to stop. Sheriff deputies were requested, and the subject was stopped outside of the park. The woman was uncooperative and had to be handcuffed and placed on the ground by the deputies to gain compliance. The woman said she "wanted to die," gave a false name and date of birth and denied having a California driver's license. After further questioning the woman gave truthful information. She was cited for the after-hours violation and released. Preserve Rancho San Antonio County Park Location Front gate	2	SCCSO	3
Sep 15 <i>MA 13S275</i>	A 1/4 acre fire occurred in the Kings Grove area adjacent to El Corte de Madera and Purisima Creek Redwoods Preserves. District staff assisted Cal Fire with extinguishing the fire and constructing fire line around the perimeter of the fire. The fire was in heavy fuels and steep terrain. Preserve Off District Lands - Skyline Location Tom May Community Center, King's Grove 3.1 M west of Hwy. 35 on Tunitas Creek Rd.	3	KMFD SMCF	
Sep 18 <i>IR 13S277</i>	A District ranger observed a visitor riding a battery-powered motorized bicycle inside the preserve on 2 different dates in August 2013 and was verbally warned that motorized vehicles are prohibited on District land. The rider did not claim a disability and will be notified by e-mail that unless he has a disability under Federal ADA laws, motorized vehicles are prohibited. Preserve Purisima Creek Redwoods Location Purisima Creek Trail and Lawrence Creek Trail	1		

OCCURRENCES OF SPECIAL INTEREST 2013

Page 19

DATE	PUBLIC SUMMARY	Rangers	Other Agency	#Staff
Sep 18 <i>AR 13S278</i>	District rangers copied San Mateo Fire traffic of a bike accident in the preserve. The accident occurred on a rocky section of the trail. The rider's foot slipped out of the clip and became trapped under the bicycle. Rangers arrived first on-scene and found the patient lying on the trail. His left ankle had been splinted by bystanders using sticks and a bicycle tube. Rangers assisted with getting fire to the scene, assessed the patient and provided medical care. The fire department administered morphine to the patient due to the extreme pain she was experiencing. Rangers transported the patient out of the preserve, and he was transported to hospital by ambulance. Preserve El Corte de Madera Creek Location Manzanita Trail	4	CDF SMCF WFD	
Sep 18 <i>MA 13S276</i>	A District maintenance supervisor traveling northbound on Highway 35 came upon a bicycle versus car accident. The supervisor called for fire and medics to respond. Initially the female rider was conscious and breathing but stopped breathing and went pulse less. CPR was started and District rangers responded as well as San Mateo County Fire. A landing zone was established, however the patient was declared deceased. Preserve Off District Lands - Skyline Location Hwy. 35 at Elk Tree Road	2	CDF CALSTAR CHP SMCF SMCSO	1 4 4 1
Sep 28 <i>IR 13F364</i>	While on patrol, one District ranger found two 50-pound bags of fertilizer and one green army duffel bag. The duffel bag was empty. Each bag of fertilizer was inside a plastic garbage bag tied shut. All were next to each other partially covered by bushes. Santa Clara County Sheriff's Department Marijuana Eradication Team was notified. Preserve Sierra Azul Location Intersection of Hicks Rd. & Mt. Umunhum Rd. across from Jacques Ridge parking lot.	1	SCC MET	1
Sep 29 <i>AR 13F365</i>	One subject was hiking with a group in the preserve. He had mentioned not feeling well on multiple occasions. First he had felt weak, stopping several times, also complaining that he felt faint. Later he complained of leg pain and had stopped to rest several times. Finally he collapsed on the trail and his group attempted to cool him down and started CPR. District rangers responded to the scene as well as Santa Clara County Fire who evaluated and provided treatment. The patient was pronounced dead at the scene by Santa Clara County Fire. District staff assisted the Coroner's office in removal of the deceased. Preserve Fremont Older Location Fern Trail	4	SCCO Coroner SCCF SCCSO	1 6 4
October				
Oct 04 <i>AR 13S292</i>	District rangers copied radio traffic of a bicycle accident. A District maintenance supervisor found the victim walking up the trail about 1/2 mile from where he had crashed his bike. The victim suffered a compound fracture on his right arm; also stated he had pain in his back and lower right abdominal area. The supervisor provided primary assessment and transported the victim to Fire medics at gate CM05, where they took over patient care and transported him to a local hospital. Preserve El Corte de Madera Creek Location Springboard Trail	2	SMCF WFD	
Oct 08 <i>IR 13F376</i>	District rangers were asked by Santa Clara County Fire to respond because of a report of an illegal campfire. The fire had been visible to commuters on Highway 17. Two subjects were detained by Santa Clara County Fire Arson Investigators. A ranger cited both subjects for having fire without a permit and closed area violations. Preserve St. Joseph's Hill Location Flume Trail	1	SCCF	12

OCCURRENCES OF SPECIAL INTEREST 2013

DATE	PUBLIC SUMMARY	Rangers	Other Agency	#Staff
Oct 09 <i>MA 13S298</i>	<p>A District ranger responded to a motorcycle accident and provided initial assessment, oxygen and C-spine. A truck traveling eastbound went over the center line clipping the motorcycle. The cyclist suffered multiple fractures on his right leg, including an exposed femur fracture. Additional District rangers arrived and provided landing zone operations. The victim was transported by air to a local hospital.</p> <p>Preserve Off District Lands - Skyline</p> <p>Location Hwy. 84, 1.5 miles west of Hwy. 35</p>	3	CHP LHFD LIFE SJPD SMCF	
Oct 12 <i>IR 13F378</i>	<p>A report was received that non-verbal autistic adult was lost. The person hiking with the lost individual was the subject's father, who has Alzheimer's. Several District rangers along with a Santa Clara County Sheriff's deputy searched for the adult and found him on the service road and he was united with his family.</p> <p>Preserve Rancho San Antonio County Park</p> <p>Location Service Road</p>	5	SCCSO	1
Oct 26 <i>AR 13S317</i>	<p>District rangers responded to an injury bicycle accident where a cyclist lost control and went approximately 25 feet over the side of the trail. A group of cyclists found the patient on the trail as he had climbed back up. The patient said he had lost, and then regained, consciousness. The patient had impaled his left leg on an unknown object and was bleeding. His primary complaint was leg pain. District rangers responded to the scene; fire was already transporting the patient out. Rangers coordinated the landing zone and performed traffic control.</p> <p>Preserve El Corte de Madera Creek</p> <p>Location South Leaf Trail</p>	2	CDF CALSTAR CHP KMFD WFD	3 2
November				
Nov 05 <i>IR 13S330</i>	<p>A District ranger working in the preserve heard a dog barking and looking up saw a large dog charging toward him. The dog was not leashed. The ranger asked an approaching hiker if the dog belonged to her, and asked her to restrain the dog. She complied stating that the dog belonged to relatives living nearby, and she was just walking it. She also stated she was not familiar with the area and did not know the regulations. She was cited for dog off leash.</p> <p>Preserve Coal Creek</p> <p>Location Coal Road</p>	1		
Nov 09 <i>IR 13F405</i>	<p>A vehicle was found in the parking lot displaying an altered disabled placard. The 2012 punch hole had been altered and filled in, and the 2013 hole punched out. The serial number of the placard was checked against DMV records, and the placard was found to have expired approximately one year ago. A parking citation was issued and a warning notice written regarding the altered placard.</p> <p>A copy of the incident report was also mailed to the DMV fraud department.</p> <p>Preserve Rancho San Antonio County Park</p> <p>Location Restroom Parking Lot</p>	1		
Nov 10 <i>MA 13S337</i>	<p>District rangers responded to a motor vehicle accident where a motorcyclist that had attempted to pass a vehicle making a turn on Highway 35. He suffered broken ribs and fractured right femur. San Mateo County Fire Department and provided additional patient care.</p> <p>Preserve Off District Lands - Skyline</p> <p>Location Windy Hill Vista Point</p>	4	CHP SMCF	

OCCURRENCES OF SPECIAL INTEREST 2013

DATE	PUBLIC SUMMARY	Rangers	Other Agency	#Staff
Nov 12 <i>IR 13S341</i>	<p>District rangers found a vehicle parked in a turnout next to the preserve. Suspecting a possible visitor in a closed area, the rangers proceeded on a well traveled illegal trail into the preserve. The trail crossed a creek and up a hill on the other side into a willow thicket. The rangers found a rusty shovel and further along a collection of materials and containers.</p> <p>Suspecting a possible marijuana cultivation site they backed out of the area. No suspects were see in the area. The site was later investigated with the assistance of California Fish and Game Department and it was determined that it had probably been an active grow site last season.</p> <p>Preserve Tunitas Creek Location</p>	2		
Nov 13 <i>IR 13S343</i>	<p>District rangers discovered recent vehicle use on an old road cut. They also found motorcycle tracks, vegetation that had been cut to maintain trail access, evidence of removal of fire wood, tree stumps and rounds, and black irrigation tubing with water flowing suggesting a possible marijuana garden. Staff later went out to the site with Santa Clara Sherriff and they found a cultivation site that had been active the last season.</p> <p>Preserve Saratoga Gap Location Old road cut</p>	2		
Nov 16 <i>AR 13F414</i>	<p>A Deer Hollow Farm Mountain View volunteer had a hip injury after being knocked over by a cow. The District's farm maintenance worker requested that District rangers and the Santa Clara County Fire Department respond. Three District rangers, Santa Clara County Fire Department, and Rural Metro Paramedics responded. The volunteer was taken by ambulance to the hospital.</p> <p>Preserve Rancho San Antonio Location Deer Hollow Farm</p>	3	RM Amb. SCCF	2 3
Nov 24 <i>IR 13S357</i>	<p>A District ranger observed a visitor riding a motorized bicycle, which are prohibited, in the preserve. He was cited for motorized vehicle prohibited and released.</p> <p>Preserve El Corte de Madera Creek Location Sierra Morena Trail</p>	1		
Nov 24 <i>AR 13S359</i>	<p>District rangers responded to a reported vehicle accident where a vehicle crossed the double line, hitting an on-coming motorcycle head on. The motorcyclist went over the side of Highway 9 into the Saratoga Gap Open Space Preserve, landing 100 feet down a steep bank. District rangers assisted Santa Clara County Fire in recovering the injured motorcyclist who suffered injuries to the neck and legs and was flown to a local hospital. Rangers provided traffic control during the accident investigation.</p> <p>Preserve Saratoga Gap Location Hwy. 9, approx. 1 mile north of Hwy. 35</p>	2	CDF CHP LIFE SCCF SCCP SCCSO	2 3 6 1 2
December				
Dec 01 <i>IR 13S367</i>	<p>While on patrol, a District ranger saw a vehicle parked along the road at a suspicious location. The ranger stopped to investigate and observed a person climbing through a gap in the fence and away from a rifle laying on the ground. That person admitting to shooting the rifle off for over an hour before being contacted by the ranger. He was cited for firearms prohibited.</p> <p>Preserve Los Trancos Location Inside the preserve along Page Mill Rd.</p>	1		

OCCURRENCES OF SPECIAL INTEREST 2013

DATE	PUBLIC SUMMARY	Rangers	Other Agency	#Staff
Dec 01 <i>IR 13S268</i>	A suspected marijuana grow site was discovered on the property. District rangers met with the reporting party. Camping gear as well as food and refuse were found in the area. The reporting party did not see anyone in the area. The matter was turned over to California Fish & Wildlife for further investigation. Preserve Purisima Creek Redwoods Location October Farm property	1		
Dec 06 <i>IR 13F436</i>	While on patrol, a District ranger discovered a dead deer dumped approximately fifty below a roadway. The deer had yellow rope through its back legs. There was also a pig hide and two dead ducks at the site. The ranger walked further down the bank and found two gun safes that appeared forced open. The ranger notified California Department of Fish & Wildlife and returned with them to the site to assist with further investigation. Preserve Sierra Azul Location Reynolds Road	2	F&G	1
Dec 10 <i>IR 13S377</i>	While on patrol, a District ranger observed a bicyclist not wearing a helmet. The ranger stopped the bicyclist, and the person was found to have an outstanding warrant for the same violation. He stated that he had received a citation "about 10 years" ago and had not taken care of it. He was advised to contact the court regarding the outstanding warrant, and was issued a citation for the new violation. Preserve Windy Hill Location Spring Ridge Trail	1		
Dec 16 <i>MA 13F442</i>	A Santa Clara County Ranger stopped two subjects who had open containers of alcohol in their vehicle. One subject was on parole and the other subject had a restraining order against the first subject. The Santa Clara County Ranger requested a Santa Clara County Sheriff's response. A District Ranger responded for officer safety until the Sheriff Deputy arrived. Preserve Off District Lands - Foothills Location Mt. Eden Road, at a Steven's Creek Co gate	1	SCCP SCCSO	1 1

KEY

AMR	AMR - Ambulance	RM Amb.	Rural/Metro Ambulance
Belmont FD	Belmont Fire Department	SC VFD	Stevens Creek Volunteer FD
CAL TRANS	CAL TRANS	SCC MET	Santa Clara County Sheriff - Marijuana Eradication Tea
CALSTAR	Cal Star	SCCF	Santa Clara County Fire Department
CASP	CA State Parks	SCCO	Santa Clara County Coroner
CDF	CAL FIRE	Coroner	
CHP	CHP	SCCP	Santa Clara County Parks
F&G	CA Det. Of Fish & Game	SCCSO	Santa Clara County Sheriff
KMFD	Kings Mountain Fire	SCRCSO	Santa Cruz County Sheriff
LHFD	La Honda Fire Brigade	SJPD	San Jose PD
LIFE	Life Flight	SMC MET	San Mateo County Sheriff - Marijuana Eradication Team
OES - SMC	OES - San Mateo County	SMCCOR	San Mateo County Coroner
		SMCF	San Mateo County Fire Department

Appendix B.1

A. MROSD VIOLATIONS	2004	2005	2006	2007	2008	2009	2010	2011	2012	2013
1. Bike - closed area	78	49	74	75	58	84	76	70	80	62
2. Bike - speed	145	117	85	89	85	103	67	72	59	90
3. Bike - helmet	188	119	151	153	142	156	129	91	78	142
4. Bike - night riding	13	26	18	12	12	25	13	17	17	39
5. Bike - unsafe operation	36	29	43	67	64	73	1	2		6
6. Dogs - prohibited	70	55	62	78	114	128	114	121	104	138
7. Dogs - off leash	194	128	205	231	179	216	217	228	184	245
8. Off road vehicle	4			4	3	3	38	26	27	17
9. Closed area	79	74	101	69	90	76	113	119	178	185
10. After hours	132	198	156	168	206	232	209	206	241	274
11. Fishing	10	12	4	5		2	3	6	7	4
12. Vandalism	44	85	53	52	31	34	50	64	42	32
13. Parking	245	165	171	166	187	156	125	147	178	162
14. Parking after hours	313	223	341	286	309	326	293	331	378	455
15. Dump/litter	18	14	20	26	5	14	8	3	4	6
16. Campfires								6	2	12
17. Camping	12	7	13	9	12	13	18	4	2	7
18. Other Violations	197	223	235	247	263	252	129	95	100	102
TOTAL	1501	1254	1427	1397	1417	1553	1491	1542	1604	1890

B. ACCIDENTS/FIRE	2004	2005	2006	2007	2008	2009	2010	2011	2012	2013
1. Bicycle Accident	26	23	24	38	32	41	25	22	34	36
2. Equestrian Accident	3	3	3	2	5		2	1	1	2
3. Hiking/Running Accident	31	25	24	38	38	49	21	16	16	14
4. Other first aid	3		1	4	2	4	10	15	25	24
5. Search & rescue	10	10	13	9	8	9	11	15	9	7
6. Vehicle	11	11	6	9	13	9	7	11	16	13
7. Fire	5	3	6	7	5	7	6	5	7	8
8. HazMat							3	3		
9. Other		2			1	1	9	14	8	11
TOTAL	89	77	77	107	104	120	94	102	119	117
*With Landing Zone	11	8	4	13	6	8	2	2	4	11

C. ENFORCEMENT	2004	2005	2006	2007	2008	2009	2010	2011	2012	2013
1. Subject Citation or JCR	515	470	545	589	509	509	558	509	526	735
2. Subject Warning	430	359	336	340	435	576	491	500	475	516
3. Parking Citation	405	338	459	401	467	474	386	434	527	621
4. Parking Warning	173	132	133	113	108	110	87	92	73	67
5. Arrests	1	8	3	1	7	1	2	1	1	2
6. Police Assistance	30	18	18	13	25	29	18	48	35	36
TOTAL	1554	1325	1494	1457	1551	1699	1540	1583	1636	1975

Appendix B.1

D. CRIMES	2004	2005	2006	2007	2008	2009	2010	2011	2012	2013
1. Auto burglaries	35	31	14	8	23	6	5	9	16	11
2. False information	13	6	6	2	5	2	2	6	5	6
3. Resisting peace officer	7	4	10	9	7	11	9	13	9	12
4. Assault			2	3	3	1		2	1	2
5. Poaching			2	1		1				
6. Marijuana - possession/cultivation	9	17	21	15	23	14	11	10	8	21
7. Alcohol - possession by minor	11	4	9	8	25		9	3	5	3
8. Non-District Parking	24	63	36	27	34	41	52	48	54	77
9. Other Crimes	60	35	45	43	35	27	57	82	51	44
TOTAL	177	174	165	142	160	117	153	176	153	182

E. MUTUAL AID	2004	2005	2006	2007	2008	2009	2010	2011	2012	2013
1. Bicycle Accident	8	5	7	6	10	9	8	12	11	19
2. Equestrian Accident										
3. Hiking/Running Accident	2	2	3	3	6	3		3	1	3
4. Other first aid			2	2	1	2	2	6	4	4
5. Search & rescue							3	5	1	1
6. Vehicle	22	15	17	38	36	30	32	28	34	39
7. Fire							7	5	7	5
8. HazMat							1		2	2
9. Law Enforcement							9	10	6	14
10. Other	1						11	4	7	3
TOTAL	33	22	29	49	53	44	73	73	73	90
*With Landing Zone	9	6	3	12	8	8	2	7	10	19

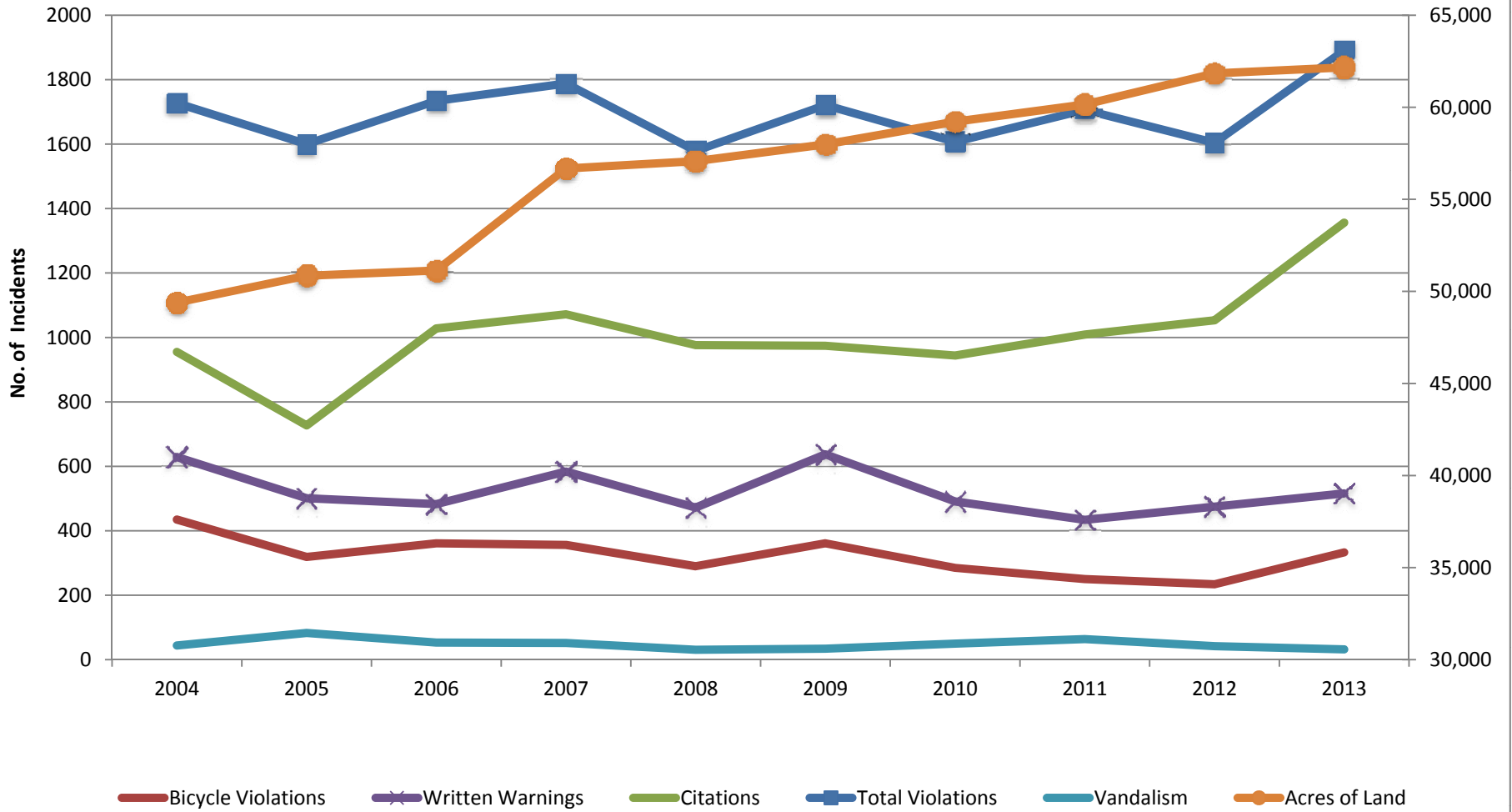
Appendix B.2

VIOLATIONS - min 5 occurrences	2004	2005	2006	2007	2008	2009	2010	2011	2012	2013
MROSD - 805.3 - After hours	132	198	156	168	206	232	209	206	241	274
MROSD - 701.1(c) - Leash required - Dog	194	128	205	231	179	216	217	228	184	243
MROSD - 805.2(a) - Enter temporary/regular cl	78	66	87	65	80	53	66	68	143	165
MROSD - 701.1(b) - Dog in prohibited area	70	55	62	78	114	128	107	117	100	138
MROSD - 502.3(a) - Helmet required	188	119	151	153	142	156	125	81	71	128
MROSD - 500.1 - Trail use speed limit	145	117	85	89	85	103	67	72	59	90
MROSD - 502.1 - Closed area - bicycle	78	49	74	75	58	84	76	70	80	62
MROSD - 801.1(l) - Prohibited Areas (Nondesig	23	53	46	39	41	39	39	44	52	42
MROSD - 805.4 - Bicycle after hours	13	26	18	12	12	25	13	17	17	39
MROSD - 404.2 - Smoking - undesignated area	7	15	15	21	20	30	45	28	32	38
MROSD - 703.1 - Unlawful defacement	44	85	53	52	31	34	48	60	40	30
MROSD - 805.2(b) - Enter sensitive/hazardous		7	14	4	10	22	47	49	35	19
MROSD - 802.1 - Vehicles prohibited	4			4	3	3	38	26	27	17
MROSD - 502.3(b) - Helmet possession require							4	10	7	14
PC - 148(a)(1) - Resist, Obstruct, Delay Peace O	7	4	10	9	7	11	9	13	9	12
MROSD - 404.1 - Outdoor fire without permit								6	2	12
H&S - 11358 - Plant or Cultivate Marijuana						1	3	6	2	11
PC - 459 - Burglary	35	31	14	8	23	6	5	9	16	11
MROSD - 403.1(b) - Possession of/discharging							7	3	4	11
SCC - B14-34.1(a)2 - Pets/dogs on 6 foot leash							4	8	1	9
H&S - 11357(b) - Possession of Marijuana - < a					1		6	2	4	8
MROSD - 410.1 - Alcoholic beverages-beer/win	3	4		12	11	2	9	3	11	8
MROSD - 403.1(a) - Possession of/discharging							4	6	5	7
PC - 594(b)(2)(A) - Vandalism, damage < \$900							9	5	4	7
MROSD - 400.1 - Camping without permit	12	7	13	9	12	13	16	4	1	7
PC - 374.4(a) - Littering	18	14	20	26	5	14	8	3	4	6
PC - 148.9(b) - False Information to a peace off	13	6	6	2	5	2	2	6	5	6
MROSD - 703.3 - Unlawful maintenance					1		3	5	4	6
CVC - 21212(a) - Minor bicycling without helm							7	7	3	6
PC - 488 - Petty Theft									1	5
MROSD - 702.1 - Damaging / removing plants				1	1		12	7	8	5
PARKING - min 5 occurrences	2004	2005	2006	2007	2008	2009	2010	2011	2012	2013
MROSD - 801.1(i) - Prohibited Areas (After hou	313	223	341	286	309	326	293	331	378	455
MROSD - 801.1(a) - Prohibited Areas (Signed)	170	69	73	86	86	68	19	29	52	43
MROSD - 801.1(d) - Prohibited Areas (Blocking	18	15	21	14	16	12	22	30	28	24
SCC - B12-120 - No parking	8	23	14	9	16	9	12	14	23	21
CVC - 22507.8(a) - Disabled Parking - Designate	5	6	13	6	7	21	10	18	9	17
MROSD - 801.1(h) - Prohibited Areas (Red curb	19	11	9	12	18	15	7	3	15	17
MROSD - 801.1(f) - Prohibited Areas (Blocking t	6	9	11	6	14	9	6	16	13	17

Appendix B.2

CVC - 22505(b) - Parking – State Highway	10	20	2	10	9	6	9	6	5	15
MROSD - 801.1(e) - Take up more than one ma							2	7	9	7
MROSD - 801.1(b) - Prohibited Areas (On fire tr	4	4	6	2	7	5	12	9	3	7
SCC - B14-33.2(a)1 - No parking after hours		14	3	2	2	3	3	3	2	5
WEAPONS related Incidents	2004	2005	2006	2007	2008	2009	2010	2011	2012	2013
Weapon - Contact								4	4	5
Weapon - Report									1	3
Weapon - Evidence of										1

District Enforcement Activities Ten Year History



Accidents By User Type

