



Midpeninsula Regional
Open Space District

Memorandum

DATE: February 26, 2014

MEMO TO: MROSD Board of Directors

THROUGH: Stephen Abbors, General Manager

FROM: Clayton Koopman, Resource Management Specialist I

SUBJECT: Annual Deer Surveys

The annual deer surveys were conducted October 7-11, 2013 and were completed without rain delays this year. I would like to commend the rangers for their willingness to adjust their schedules and coordinate with myself, Paul McKowan and the volunteers to complete the surveys. Due to their help and cooperation, the surveys went well and were very successful.

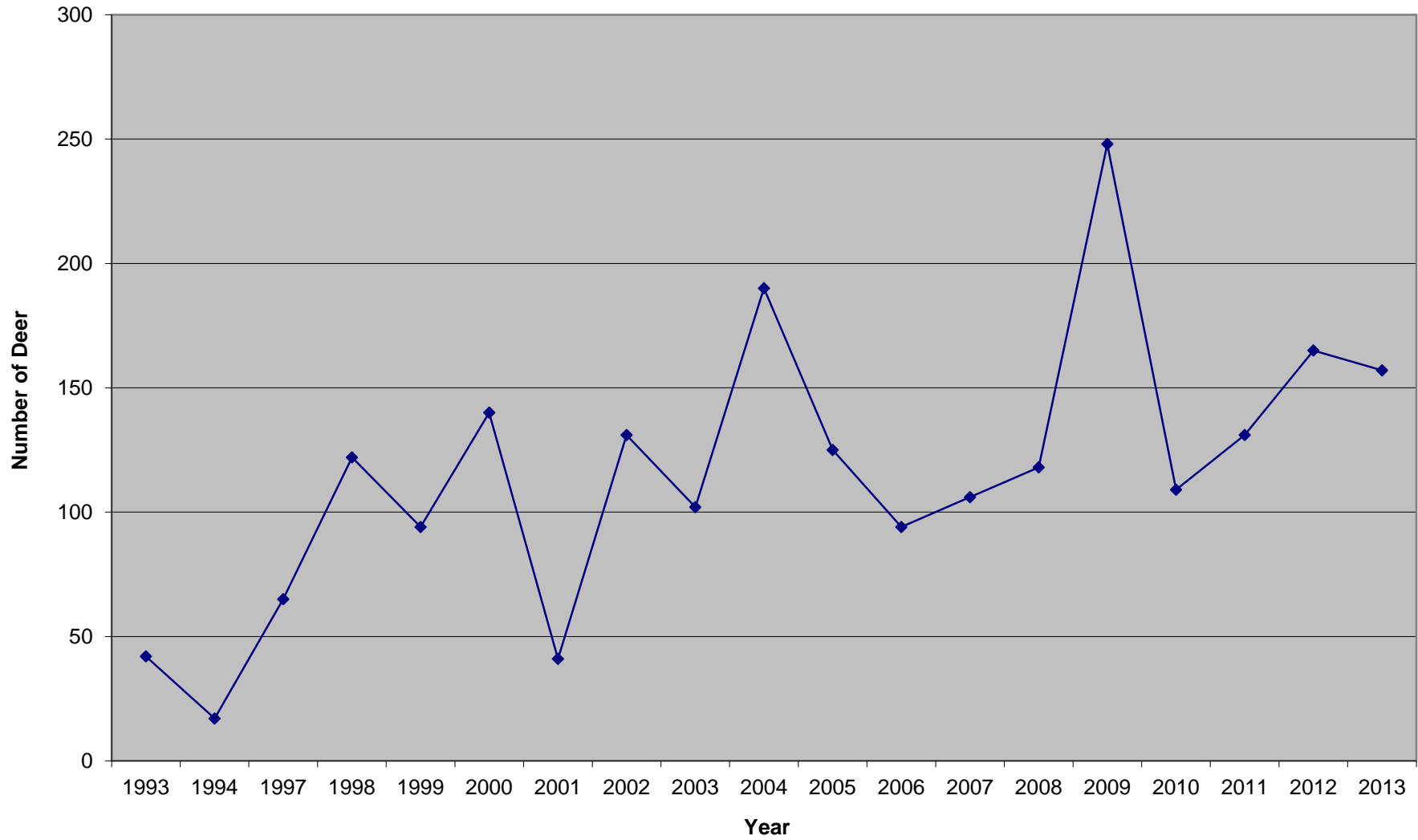
The total number of deer counted on all preserves was slightly lower this year than in 2012 (157 vs. 165) and above average overall. 2009 was a stellar year for deer numbers while 2010 was fairly low compared to the overall average. 2011 to 2013 have been fairly steady with no large shifts in overall population.

Similar to 2011 and 2012, several preserves showed lower numbers of fawns than normal when compared to the number of does. This trend may be a result of increased predation by coyotes and mountain lions. The total number of deer counted on all preserves has been steady so it appears that the lower number of fawns in recent years is not impacting overall population numbers. We will continue to monitor any trends in fawn numbers over the next several years to assess the health and population of deer herds on District land.

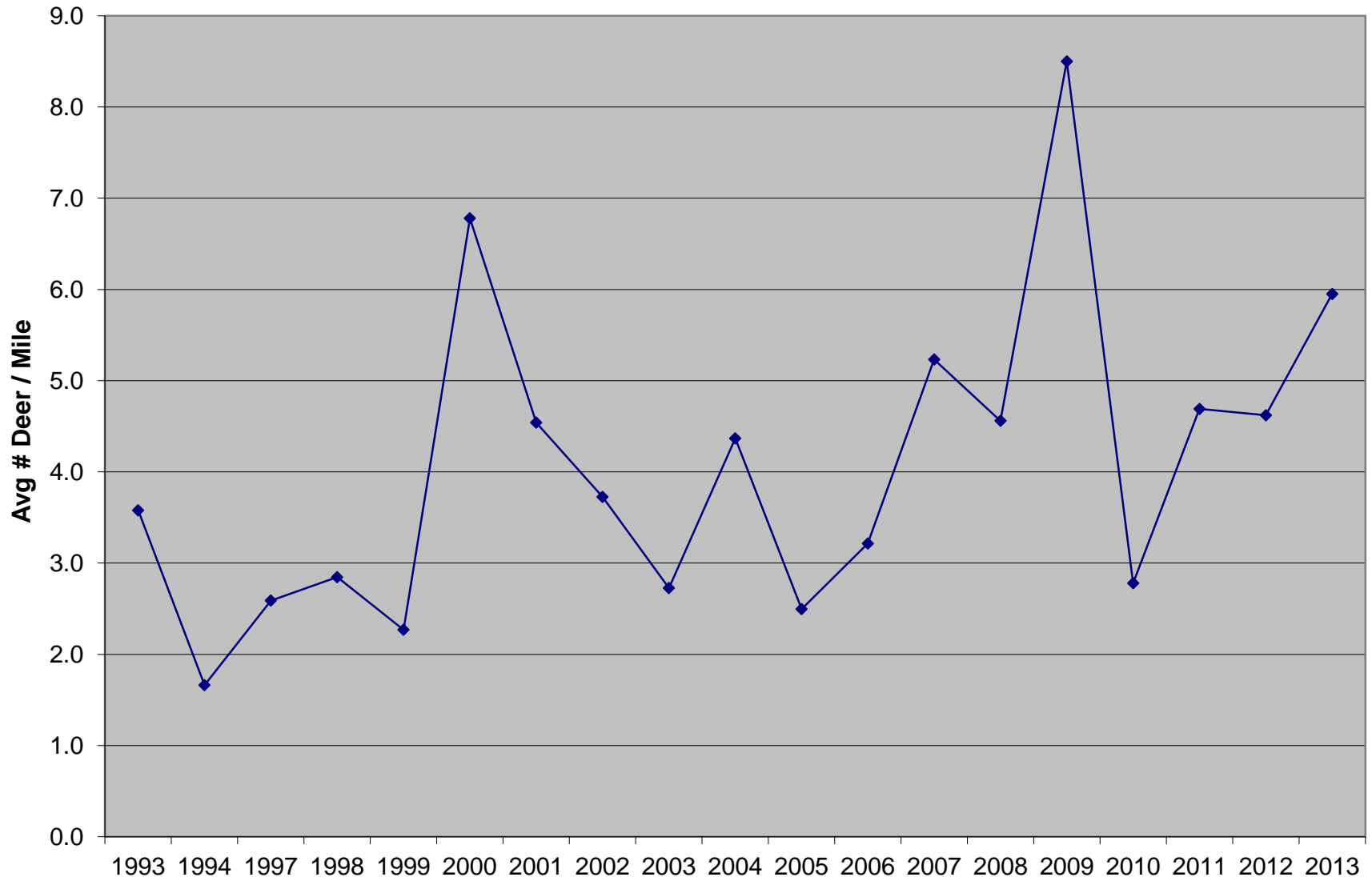
Attachments

2013 Deer Survey data and graphs

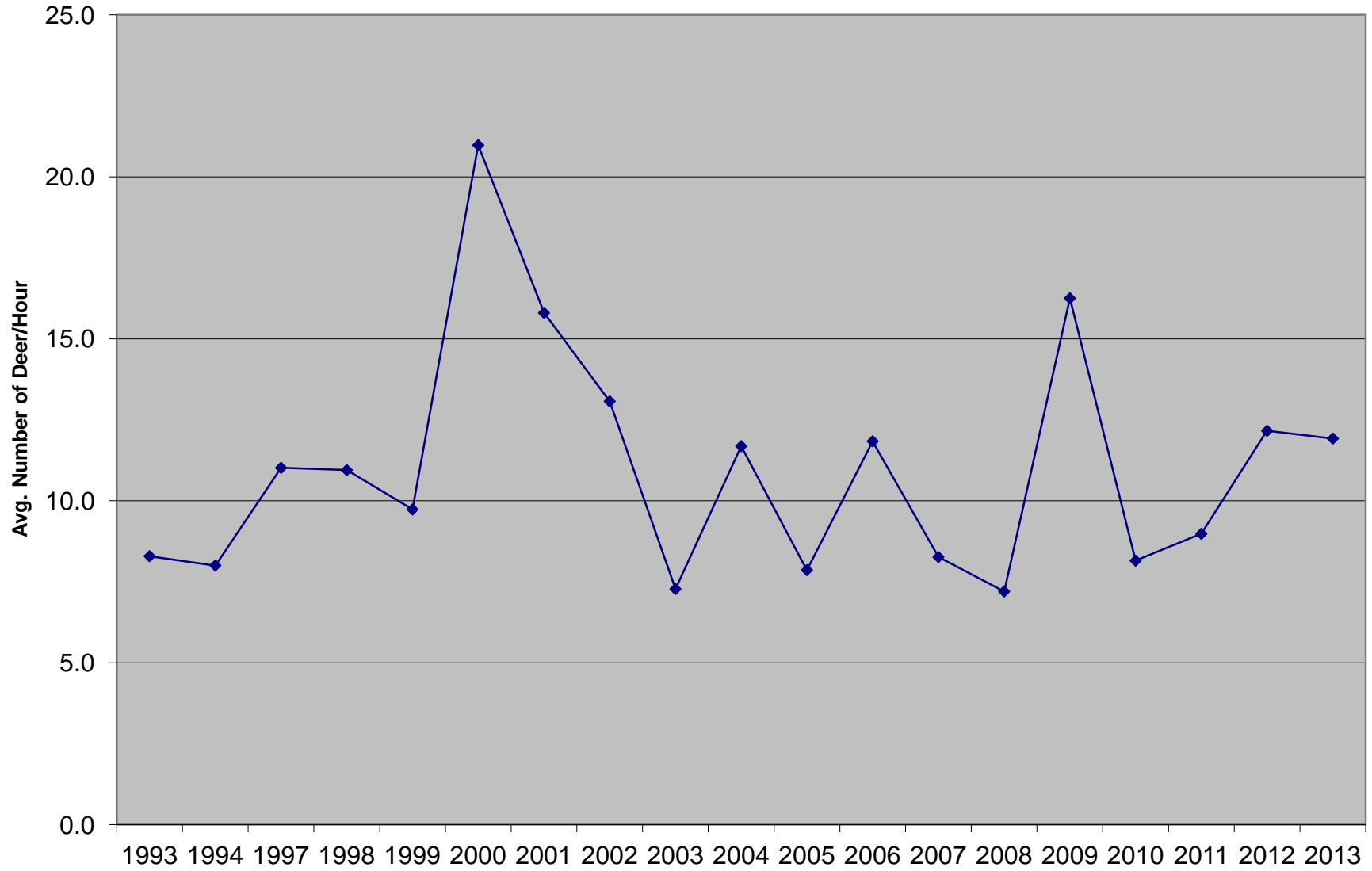
Total Number of Deer on All Preserves



Average Number of Deer Observed / Mile Surveyed: All Preserves



Average Number of Deer / Hour Surveyed: All Preserves



Deer Surveys - Midpeninsula Regional Open Space District
San Mateo and Santa Clara Counties, California

	Deer/Mile 1993	Deer/Mile 1994	Deer/Mile 1997	Deer/Mile 1998	Deer/Mile 1999	Deer/Mile 2000	Deer/Mile 2001	Deer/Mile 2002	Deer/Mile 2003	Deer/Mile 2004	Deer/Mile 2005	Deer/Mile 2006	Deer/Mile 2007	Deer/Mile 2008	Deer/Mile 2009	Deer/Mile 2010	Deer/Mile 2011	Deer/Mile 2012	Deer/Mile 2013	
Avg/Year: All Preserves	3.6	1.7	2.6	2.8	2.3	6.8	4.5	3.7	2.7	4.4	2.5	3.2	5.2	4.6	8.5	2.8	4.7	4.6	6.0	
Fremont Older			0.7	1.6	1.5	5.0		3.6	1.5	5.7	1.9	2.1	2.4	0.9	5.4	1.7	1.9	1.1	0.9	
La Honda	2.3					2.1			1.5	2.0	3.1	0.0	14.0	5.8	3.4	0.0	3.5	1.4	7.3	
Long Ridge					1.1	3.8		2.3	3.5	3.1	2.8	3.1	4.2	4.3	16.4	2.7	4.5	5.4	7.1	
Monte Bello	3.5	0.4	2.3	0.9	0.9	1.7	1.3	1.9	0.6	2.9	2.6	1.6	2.4	1.0	2.8	3.2	4.0	2.9	2.7	
Picchetti Ranch					4.8	17.5		6.3	5.8	11.7	4.6	0.9	1.0	1.8	30.0	4.7	18.3	9.2	7.7	
Rancho de Guadalupe				3.3	2.5	3.2		3.8	0.9	4.0	0.9	0.7	1.4	4.0	0.4	2.1	0.9	4.7	4.0	
Rancho San Antonio			3.1	4.6	3.5	15.3		6.2	2.6	4.1	1.8	1.1	1.9	5.3	4.8	1.2	1.5	2.4	2.3	
Russian Ridge			2.9	4.0	3.5	2.2	7.7	4.1	2.0	3.3	3.2	3.4		5.4	4.3	3.9	3.0	5.9	5.7	
Skyline Ridge	5.0	2.9	4.0	2.7	0.5	5.7		1.5	7.6	2.6	0.5	9.5	16.7	2.8	7.8	5.3	5.0	5.8	7.8	
Windy Hill				2.7					1.3			3.6	9.7	3.1	14.3	9.7	3.0	4.3	7.4	14.0
	Deer/Hour 1993	Deer/Hour 1994	Deer/Hour 1997	Deer/Hour 1998	Deer/Hour 1999	Deer/Hour 2000	Deer/Hour 2001	Deer/Hour 2002	Deer/Hour 2003	Deer/Hour 2004	Deer/Hour 2005	Deer/Hour 2006	Deer/Hour 2007	Deer/Hour 2008	Deer/Hour 2009	Deer/Hour 2010	Deer/Hour 2011	Deer/Hour 2012	Deer/Hour 2013	
Avg/Year: All Preserves	8.3	8.0	11.0	10.9	9.7	21.0	15.8	13.1	7.3	11.7	7.9	11.8	8.3	7.2	16.3	8.2	9.0	12.2	11.9	
Fremont Older			4.0	6.7	9.6	15.5		12.8	5.6	12.0	6.9	6.9	12.0	4.5	23.6	5.0	6.0	3.2	3.3	
La Honda	9.0					7.2			2.8	4.0	6.5	0.0	12.2	7.3	8.6	0.0	8.7	3.1	5.3	
Long Ridge					5.0	16.0		7.1	12.9	9.0	8.2	15.0	11.2	12.1	46.0	10.0	13.3	29.0	21.3	
Monte Bello	9.2	4.0	14.0	6.5	6.0	9.5	13.6	11.6	3.4	16.5	12.4	7.7	10.2	3.1	12.4	15.0	15.6	11.3	12.1	
Picchetti Ranch					15.0	42.0		24.0	8.4	12.0	10.5	1.6	4.6	1.4	15.0	4.4	8.5	11.0	11.1	
Rancho de Guadalupe				9.2	12.8	16.0		10.0	3.8	16.7	3.0	2.9	4.7	4.0	2.0	7.0	3.3	16.0	17.9	
Rancho San Antonio			12.3	18.3	17.8	48.0		26.6	9.7	18.9	10.0	5.7	7.6	13.5	14.0	5.4	5.2	8.5	8.0	
Russian Ridge			8.8	14.0	11.4	8.8	18.0	8.6	5.0	10.0	9.6	13.3		9.5	13.3	6.9	3.5	12.0	11.4	
Skyline Ridge	6.7	12.0	16.0	13.3	2.8	12.0		3.8	17.5	6.2	1.0	30.5	8.0	8.3	10.8	22.5	15.0	15.7	20.0	
Windy Hill				8.6					3.5			10.4	34.8	3.9	8.3	16.8	5.3	10.7	8.8	
Total Deer: All Preserves	42	17	65	122	94	140	41	131	102	190	125	94	106	118	248	109	131	165	157	