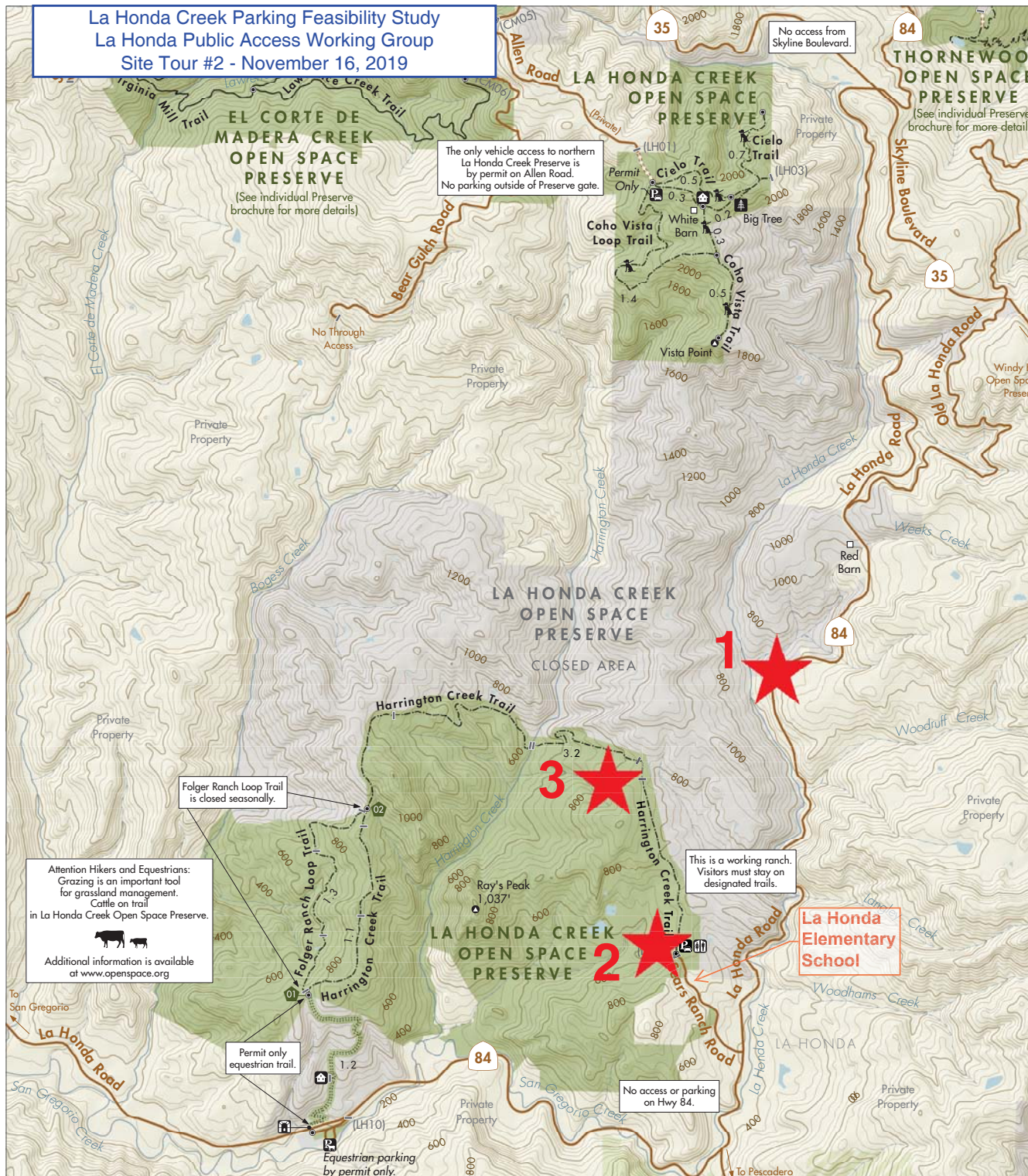


La Honda Creek Parking Feasibility Study
 La Honda Public Access Working Group
 Site Tour #2 - November 16, 2019

La Honda Creek
 Open Space Preserve



For More Information
 Visit www.openspace.org
 or call (650) 691-1200



The only vehicle access to northern La Honda Creek Preserve is by permit on Allen Road. No parking outside of Preserve gate.

Folger Ranch Loop Trail is closed seasonally.

Attention Hikers and Equestrians:
 Grazing is an important tool for grassland management. Cattle on trail in La Honda Creek Open Space Preserve.



Additional information is available at www.openspace.org

This is a working ranch. Visitors must stay on designated trails.

No access or parking on Hwy 84.

Permit only equestrian trail.

Equestrian parking by permit only.

- ### Map Legend
- Midpen Preserve
 - Closed Area - No Public Access
 - Other Public Land
 - Other Public Land - Restricted Access
 - Private or Leased Land - No Public Access
 - No Public Entry in Midpen Water Areas
 - Road
 - Vehicle Driveway
 - Equestrian Only
 - Hiking, Equestrian
 - Hiking, Bicycling, Equestrian
 - Trail Junction
 - Numbered Trail Junction
 - Gate (#)
 - Parking Lot
 - Equestrian Parking
 - Restroom
 - Point of Interest
 - Notable Flora
 - Tunnel
 - Other Public or Private Building
 - Residence

- 1** Preserve Gate LH07
- 2** Sears Ranch Road: West of existing parking area
- 3** Sears Ranch Road: Approx. 1 mile north of existing parking area

- Dogs on Leash Permitted on Designated Trails
- Bicycles not permitted in this Preserve

In case of emergency, call 911 or 24-hour Ranger Dispatch at (650) 968-4411.

For your safety, and the protection of the preserves:

The preserve is open from dawn until one-half hour after sunset; Please leave natural features, plants, and animals undisturbed;

Pack it in, pack it out- please do not litter;
 Auto burglaries are increasing;
 Take valuables with you and lock your vehicle.

