



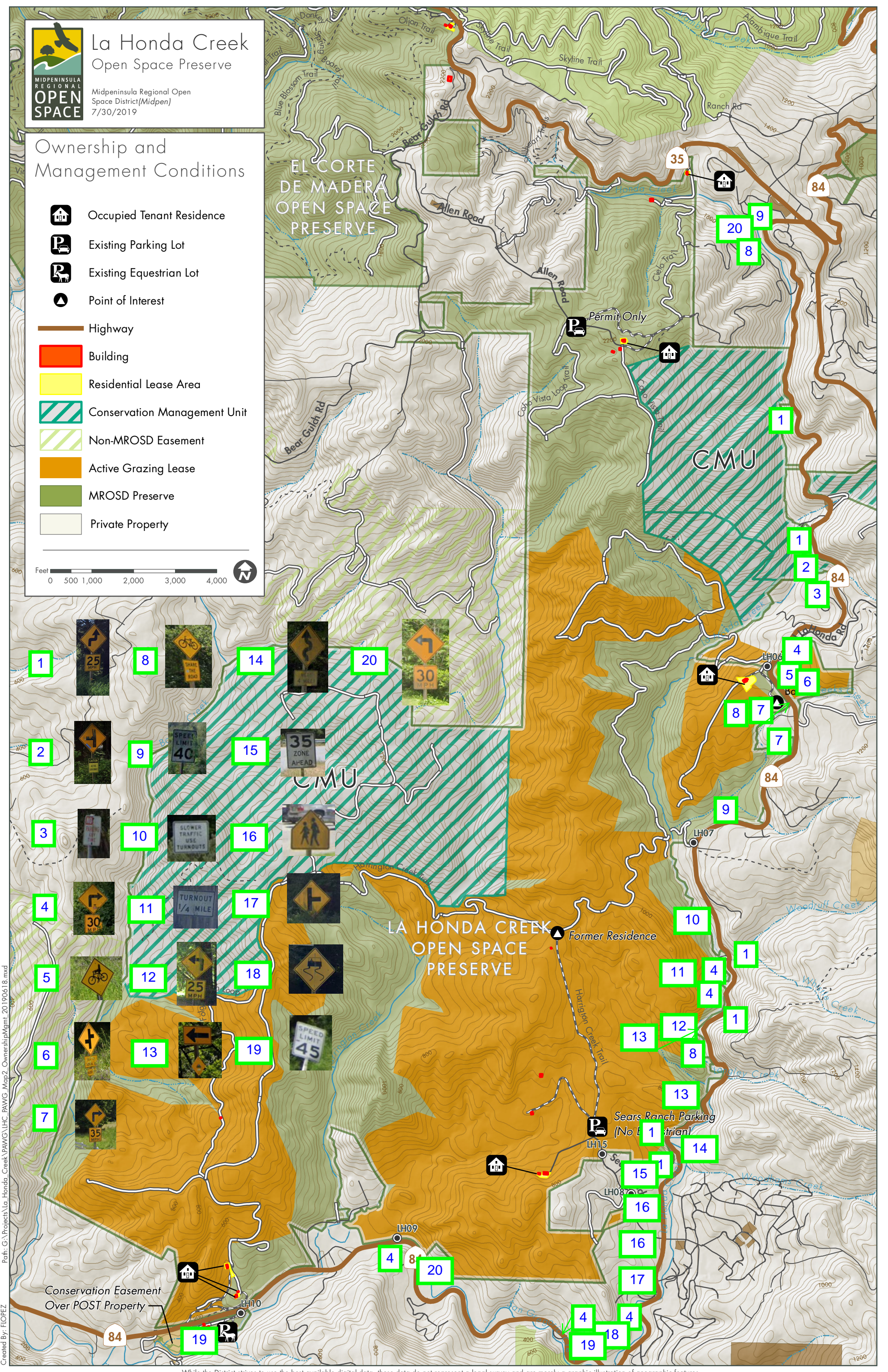
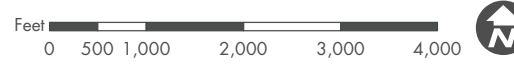
La Honda Creek Open Space Preserve

Midpeninsula Regional Open
Space District (Midpen)
7/30/2019

Ownership and Management Conditions

- Occupied Tenant Residence
- Existing Parking Lot
- Existing Equestrian Lot
- Point of Interest

- Highway
- Building
- Residential Lease Area
- Conservation Management Unit
- Non-MROSD Easement
- Active Grazing Lease
- MROSD Preserve
- Private Property



Path: G:\Projects\La Honda_Creek\PAWG_Map2_Ownership\Map2_20190618.mxd
Created By: FLOPEZ

While the District strives to use the best available digital data, these data do not represent a legal survey and are merely a graphic illustration of geographic features.