



Public Access Projects at Purisima Creek Redwoods Open Space Preserve

Purisima Creek Redwoods is one of the Midpeninsula Regional Open Space District's most beloved public open space preserves for its iconic redwood forests, coastal views and large network of multiuse trails accessible from both the Skyline and Coastal areas.

Midpen planning staff are working on multiple interconnected projects throughout this popular preserve to enhance the visitor experience and protect the natural environment.

Para recibir información acerca de estos proyectos en Español, por favor envíe un correo electrónico a info@openspace.org.

Multimodal Access Study

openspace.org/pcr-multimodal

Parking demand often exceeds space during peak visitation hours, holidays and weekends at Purisima Creek Redwoods Preserve. In 2021, Midpen staff began evaluating existing preserve visitation, identifying strategies and developing a plan to address parking and traffic issues, increase greener modes of transportation and better manage visitation at the preserve. The results of this study will inform current and future public access projects throughout this preserve.

Purisima-to-the-Sea Trail and Parking Area

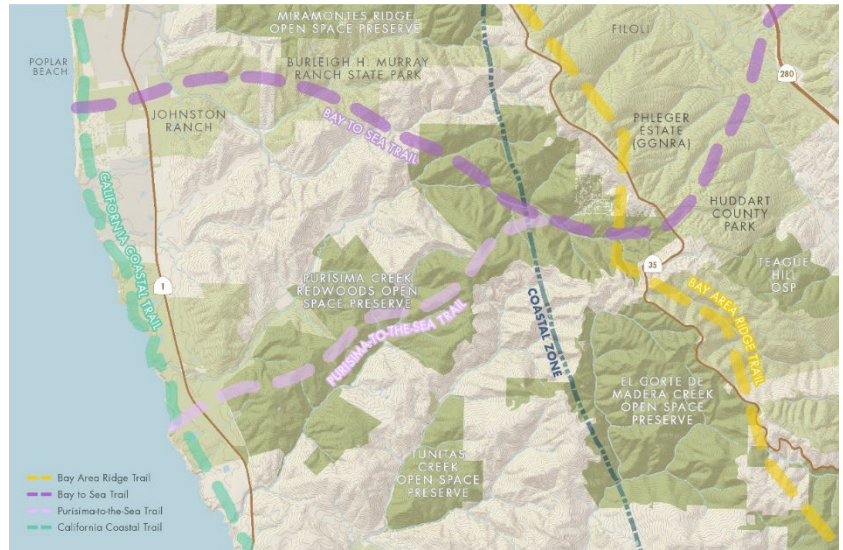
[Project openspace.org/purisima-sea](https://openspace.org/purisima-sea)

Work started in early 2021 to begin planning the long-envisioned Purisima-to-the-Sea Trail and parking area. When built, it will link the [California Coastal Trail](#) to the [Bay Area Ridge Trail](#), allowing open space visitors to travel on trails between the Pacific Ocean, through grassy ridgelines, canyons and forests, to the ridgeline of the Santa Cruz Mountains. Staff are currently studying and planning adding approximately **5 miles of new trail** to Purisima Creek Redwoods Preserve's existing trail system, improving capacity for coastal access to this preserve with **a new parking area**, and connecting to the California Coastal Trail. The Purisima-to-the-Sea Trail will eventually be part of the larger 40-mile [Bay-to-Sea Trail](#), a conceptual regional trail that would connect the San Francisco Bay to the Pacific Ocean.

Bay Area Ridge Trail Connection and Parking Area Feasibility Study

The vision of a public trail encircling Bay Area ridgetops is being realized piece by piece. The San Francisco Public Utilities Commission is planning a new **Bay Area Ridge Trail** segment on their watershed lands that would terminate near Midpen's Purisima Creek Redwoods Preserve. In 2021, with support from a SFPUC grant, Midpen began studying the feasibility of connecting the SFPUC's proposed new trail segment to Purisima Creek Redwoods Preserve's trail system, including crossing Highway 35 and expanding the preserve's North Ridge parking area.

The Midpeninsula Regional Open Space District's mission is to acquire and preserve a regional greenbelt of open space land of regional significance in perpetuity, protect and restore the natural environment and provide opportunities for ecologically sensitive public enjoyment and education. On the San Mateo County coast, our mission also includes preserving agricultural land of regional significance and rural character and encouraging viable agricultural use of land resources. Midpen has protected more than 65,000 acres of open space in the Santa Cruz Mountains region since 1972.

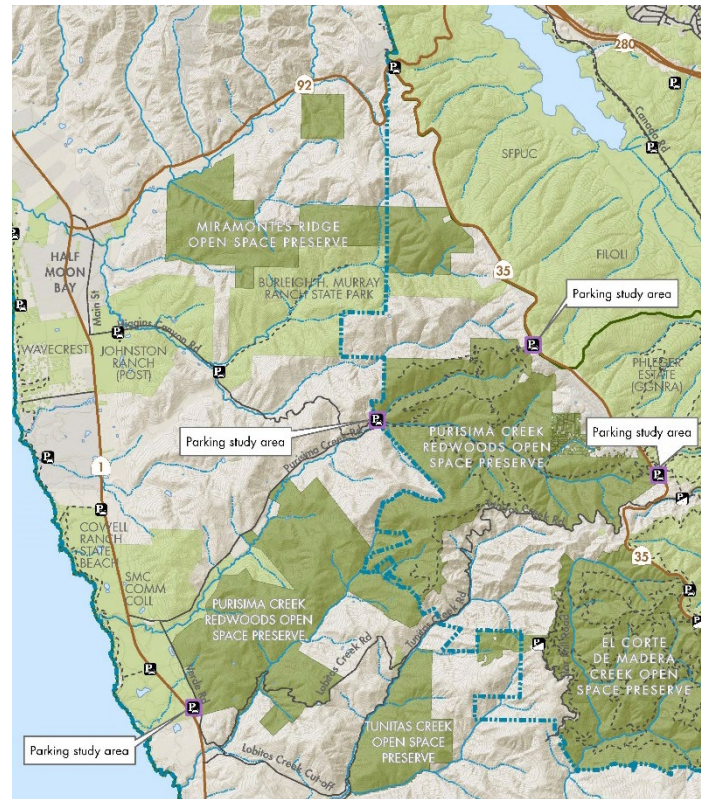


The Purisima Creek Multimodal Access Study

Purisima Creek Redwood Open Space Preserve, located on the western slope of the Santa Cruz Mountains just east of Half Moon Bay, is one of Midpen's most beloved open spaces preserves. With over 5,400 acres of hiking, biking and equestrian trails through redwood groves and coastal scrub, the Preserve provides visitors with the best that northern California has to offer.

Hundreds of people visit the Preserve each day. However, this popularity and the Preserve's relative isolation from the region's transportation networks have led to full parking areas, traffic congestion near the trailheads, safety issues resulting from traffic overflow, and a lessened visitor experience when lack of access prevents people from being able to get there.

Midpen is working on a multimodal access study – looking at the different ways people travel – for Purisima Creek Redwoods Preserve. We're trying to find ways to ease the traffic and parking challenges that visitors have been experiencing. We're also coming up with ideas to make the Preserve more accessible.



We Want to Hear from You!

We have a new public survey available as part of the following projects: The [Purisima-to-the-Sea Trail and Parking Area](#) and the [Purisima Multimodal Access Study](#).

Survey results will help guide the development of trail and parking area design options, and strategies for better managing parking, visitation and promoting greener modes of travel at this popular preserve. The anonymous survey is available on both project information webpages (linked above) and takes about 10 minutes to complete. Thank you for your input.

Take the Survey!

Scan the QR code below with your camera app to link to the online survey.



Or visit:

<https://forms.office.com/r/Kgv3sFA0wy>

For more information visit openspace.org/pcr-multimodal

Para recibir información acerca del proyecto en Español, por favor envíe un correo electrónico a info@openspace.org.