



Midpeninsula Regional Open Space District

Sensitive Species List

Updated January 2017

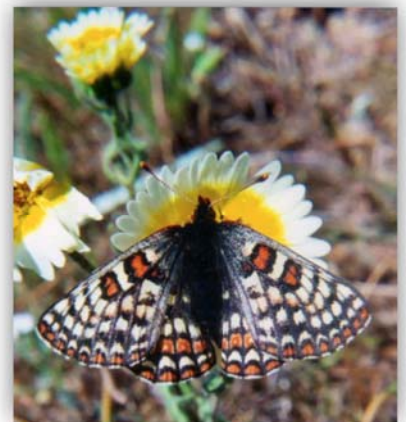


Table of Contents

AMPHIBIANS:.....	3	California Gull	18
California Tiger Salamander	3	California Black Rail	19
Foothill Yellow-legged Frog	3	Long Billed Curlew	19
California Red-legged Frog.....	4	AMERICAN WHITE PELICAN	20
California Giant Salamander.....	4	CALIFORNIA BROWN PELICAN.....	20
Santa Cruz Black Salamander.....	5	DOUBLE CRESTED CORMORANT	21
ARTHROPODS	6	Virginia Rail	21
Smith's Blue Butterfly	6	CALIFORNIA LEAST TERN	22
Bay Checkerspot Butterfly.....	6	ELEGANT TERN.....	22
Callippe Silverspot Butterfly	7	BIRDS: OWLS AND RAPTORS.....	23
Zayante Band-Winged Grasshopper	7	Northern Goshawk.....	23
BIRDS: HUMMINGBIRDS, WOODPECKERS,SWIFTS, and PERCHING BIRDS	8	Sharp-shinned Hawk	23
Tri Colored Blackbird	8	Golden Eagle.....	24
Grasshopper Sparrow	8	Short-eared Owl.....	24
Vaux's Swift.....	9	Long-eared Owl.....	25
Olive-sided Flycatcher	9	Burrowing Owl.....	25
Black Swift.....	10	Ferruginous Hawk.....	26
Willow Flycatcher	10	Swainson's Hawk	26
California Horned Lark	11	Northern Harrier	27
San Francisco Common Yellowthroat	11	White-tailed Kite.....	27
Yellow-breasted Chat	12	Merlin.....	28
Loggerhead Shrike.....	12	American Peregrine Falcon	28
Nuttall's Woodpecker	13	Bald Eagle.....	29
Purple Martin.....	13	Osprey	29
American Yellow Warbler	14	Cooper's Hawk	30
Rufous Hummingbird.....	14	FISH.....	31
Allen's Hummingbird	15	COHO SALMON.....	31
Lawrence's Goldfinch.....	15	STEELHEAD.....	31
Least Bell's Vireo	16	MAMMALS: BATS	32
BIRDS: WATER ASSOCIATED, i.e. PELICANS, GULLS, TERNS, RAILS, COMORANTS	17	Pallid Bat.....	32
Marbled Murrelet.....	17	Townsend's Big-eared Bat.....	32
Western Snowy Plover.....	17	Western Red Bat	33
Least Bittern	18	Hoary Bat.....	33
		Long-eared Myotis.....	34
		Fringed Myotis.....	34
		Long-legged Myotis.....	35
		MAMMALS: NON-BAT	36

Ring-tailed Cat	36
Santa Cruz Kangaroo Rat	36
SAN FRANCISCO DUSKY-FOOTED WOODRAT	37
Mountain Lion	37
SALT MARSH HARVEST MOUSE	38
Salt-marsh Wandering Shrew	38
American Badger	39
REPTILES	40
WESTERN POND TURTLE	40
Coast Horned Lizard	40
SAN FRANCISCO GARTER SNAKE	41

AMPHIBIANS:

California Tiger Salamander (*Ambystoma californiense*)



Source: USFWS

Central California Coast Distinct Population Segment (DPS)

Federal Status: Threatened

Critical Habitat: Designated

State Status: Threatened

Species Description: Stocky black salamander with yellow spots and/or bars. Average adult size is 5 to 9 inches including the tail. Larvae are yellowish gray and have prominent gills. Adults are nocturnal, spending most of its life in underground burrows. Breeding occurs December to February. Females lay eggs singly or in groups of 2-4. Eggs are pale yellow or brownish.

Habitat Description: Requires suitable upland habitat with numerous active mammal burrows and a nearby breeding pond. Prefers grassland, oak savanna and woodlands. Documented in the late 1800s in Permanente Creek within Ranch San Antonio OSP. Critical habitat currently exists east of Sierra Azul OSP in the Santa Theresa Hills.

Foothill Yellow-legged Frog (*Rana boylei*)



Source: Suzanne L. Collins, 2001

Federal Status: None

Critical Habitat: None

State Status: Species of Special Concern

Species Description: Small sized frog with dorsum grey, brown or reddish, commonly spotted or mottled but occasionally plainly colored; yellow under legs and may extend to abdomen; triangular, buff-colored patch on snout; no eye stripe; throat and chest often dark spotted; indistinct dorsolateral folds with granular skin.

Habitat Description: Breeding sites occur in shallow, slow flowing water with at least some pebble and cobble substrate. Pebble/cobble creek margins or bars with at least some shading seem to be preferred by sub-adults and adults. Yellow legged frog are found within the Sierra Azul Open Space Preserve.

California Red-legged Frog (*Rana draytonii*)



Source: Scott J. Hein

Federal Status: Threatened
Critical Habitat: Designated
State Status: Species of Special Concern

Species Description: A moderate to large frog ranging up to 5.5 inches in size. Dorsolateral folds (ridge of skin extending from eye to hindlegs); red, pink or salmon coloring on abdomen and underside of hindlegs; and dorsal spotting are characteristic of this species.

Habitat Description: Majority of life cycle spent in ponds, marshes, springs, streams, and reservoirs. Access to vegetation cover within pond habitats is an important characteristic of successful breeding habitat. Larvae require 3 to 7 months to metamorphose to adults capable of surviving outside of water. Accompanying maps show distribution and Critical Habitat within the District's boundaries.

California Giant Salamander (*Dicamptodon ensatus*)



Source: I:Drive

Federal Status: None
Critical Habitat: None
State Status: Species of Special Concern

Species Description: One of the largest terrestrial salamanders in North America, with a large robust body, a massive head, and stout limbs. Transformed adults have 12 - 13 indistinct costal grooves. The tail is flattened from side to side to facilitate swimming. Larvae are stream-type with tail fins that extend forward only to the hind limbs. There is often heavy black mottling. Gills are short, bushy, and dull red. Credit California Herps

Habitat Description: Occurs in wet coastal forests in or near clear, cold permanent and semi-permanent streams and seepages. One population has been found inhabiting flowing water in a network of caves. Credit California Herps.

Santa Cruz Black Salamander
(*Aneides flavipunctatus niger*)



Source: Lawrence Ericson 2016

Federal Status: None

Critical Habitat: None

State Status: Species of Special Concern

Species Description: A medium-sized salamander with nasolabial grooves and well-defined costal grooves. Dorsal coloring is solid black, with a few fine white specks. Young are black with white speckles. Credit California Herps

Habitat Description: Occurs in mixed deciduous woodland, coniferous forests, coastal grasslands. Found under rocks near streams, in talus, under damp logs, and other objects. Credit California Herps.

ARTHROPODS

Smith's Blue Butterfly (*Euphilotes enoptes smithi*)



Source: Center for Biological Diversity

Federal Status: Endangered

Critical Habitat: None

State Status: None

Species Description: Very small butterfly, total wingspan is less than 1 inch across. Males are blue above with black edges. Females are brown above with a thin white fringe and an orange bar across the hind wing. The underwings of both sexes are brown with black and orange spots. Active July to September when temperatures are above 60 degrees F and there is little to no wind.

Habitat Description: Coastal sand dune, grassland, and scrub habitat where seacliff buckwheat and coast buckwheat are present. Adults feed on these two plants and lay their eggs on the flowers. Historically observed along Loma Prieta Road in Sierra Azul OSP.

Bay Checkerspot Butterfly (*Euphydryas editha bayensis*)



Source: USFWS

Federal Status: Threatened

Critical Habitat: Designated

State Status: None

Species Description: Small butterfly, total wingspan is roughly 2 inches across. Distinct, black bands along the upper wing surface contrast sharply with the bright red, yellow and white spots, giving it a "checkered" appearance. Active February to May.

Habitat Description: Serpentine outcrops where native grasslands occur. Host and nectar plants include: dwarf plantain, purple owl's clover, exerted paintbrush, goldfields and tidy tips. . Reintroduced at Edgewood County Park across from Pulgas Ridge OSP, historically observed in Sierra Azul OSP and critical habitat is currently present east of Sierra Azul OSP and at Stanford's Jasper Ridge Biological Preserve.

Callippe Silverspot Butterfly
(Speyeria callippe callippe)



Source: USFWS

Federal Status: Endangered

Critical Habitat: None

State Status: None

Species Description: Small butterfly, total wingspan is roughly 2 inches across. Wings are brown, tan, and black on the surface and orange-brown with "silver spots" on the undersides. The wings and abdomen are hairy. Active May to July.

Habitat Description: Native grasslands where the host plant (Johnny jump ups) are present. Potential to occur in Monte Bello and Russian Ridge OSPs based on observations of similar species and host plant presence.

Zayante Band-Winged Grasshopper
(Trimerotropis infantilis)



Source: Sanhills Alliance for Natural Diversity

Federal Status: Endangered

Critical Habitat: None

State Status: None

Species Description: Tan to Gray grasshopper with banded eyes, similar in appearance to other grasshoppers but only found in a distinct geographical area. Good flying skills, buzz while flying. Fly from late may to October, most active July and August.

Habitat Description: Historically occurred, but locally extinct in the area surrounding Lexington Reservoir near Bear Creek and Sierra Azul OSPs. . Critical habitat is currently found south of the District in the sand hills of the Santa Cruz Mountains.

**BIRDS: HUMMINGBIRDS,
WOODPECKERS, SWIFTS, and PERCHING
BIRDS**

**Tri Colored Blackbird
(*Agelaius tricolor*)**



Source: J. Gallagher, Sea and Sage Audubon

Federal Status: USFWS Bird of Conservation Concern

Critical Habitat: None

State Status: Species of Special Concern

Species Description: Similar to the more often seen Red-winged Blackbird, the Tricolored Blackbird has a red shoulder patch with a bright white bar. Females lay 1-5 eggs

Habitat Description: Marshy areas having both an open water component and cattails, rushes, or blackberry brambles are required for breeding. Historically documented at La Honda Creek OSP.

**Grasshopper Sparrow
(*Ammodramus savannarum*)**



Source: Audubon, G. Smith

Federal Status: None

Critical Habitat: None

State Status: Species of Special Concern

Species Description: Small songbird, brownish, grey, black and white; dark crown with a pale middle stripe, white belly and short tail. Primarily a summer resident from March to September.

Habitat Description: Short to middle height grassland prairies and pastures with scattered shrubs. Nests and feeds on the ground. Has been observed at Miramontes Ridge, Russian Ridge and Monte Bello OSPs.

Vaux's Swift
(Chaetura vauxi)



Source: <http://www.planetofbirds.com/>

Federal Status: None
Critical Habitat: None
State Status: Species of Special Concern

Species Description: Small dark grey to brown bird, long pointed wings, stout bird with a short bill. Often occurs in flocks. Occurs primarily from mid-April to mid-October; breeds from early May to mid-August. Spends almost all of daylight hours in the air foraging for insects. Roost communally.

Habitat Description: Cup nests are found in tree holes (primarily old growth), hollow snags, or cliff crevices. Has been observed at Sierra Azul and Skyline Ridge OSPs.

Olive-sided Flycatcher
(Contopus cooperi)



Source: D.Sherony, Wikimedia commons

Federal Status: USFWS Bird of Conservation Concern
Critical Habitat: None
State Status: Species of Special Concern

Species Description: Large stocky flycatcher with a short tail. White breast with gray sides. Back is olive gray brown.

Habitat Description: Associated with forest openings and edges occurring in mature forests and following disturbances, such as tree fall gaps, fire, and logging.

Black Swift
(Cypseloides niger)



Source: T. Gray, Wikimedia Commons

Federal Status: USFWS Bird of Conservation Concern

Critical Habitat: None

State Status: Species of Special Concern

Species Description: Large dark grey bird with long pointed wings and a short bill. Shoulders are darker than the rest of the wing. Breeds from May to September. Lays 1-2 eggs, feeds on insects.

Habitat Description: Primarily a mountainous or coastal cliff species. Often nests on cliff faces above the ocean or behind or next to waterfalls. Documented at Sierra Azul OSP.

Willow Flycatcher
(Empidonax traillii)



Source: USFWS

Federal Status: USFWS Bird of Conservation Concern

Critical Habitat: None

State Status: Endangered

Species Description: Small flycatcher with two white wingbars. Brown olive above, white below. Upper bill gray, orange below.

Habitat Description: Deciduous thickets of willows or other riparian vegetation found in wet marshy areas.

California Horned Lark
(Eremophila alpestris actia)



Source: A.Vernon, Wikimedia Commons

Federal Status: None
Critical Habitat: None
State Status: CDFW Watchlist

Species Description: Distinctive-looking species, mainly brown-grey above and pale below, with a striking black and yellow face pattern. The tail is mostly black, in the summer the male has black "horns" on its crown. Eats seeds, grains and insects.

Habitat Description: Found in open treeless areas, often in pastures. Nests on the ground with 2-5 eggs.

San Francisco Common Yellowthroat
(Geothlypis trichas sinuosa)



Source: PRBO, P. Knapp

Federal Status: USFWS Bird of Conservation Concern
Critical Habitat: None
State Status: Species of Special Concern

Species Description: Yellow olive warblers with males having a black mask.

Habitat Description: Tangled vegetation at the edges of marshes and wetlands.

Yellow-breasted Chat
(*Icteria virens*)



Source: J. Conrad, Wikimedia Commons

Federal Status: None

Critical Habitat: None

State Status: Species of Special Concern

Species Description: Medium sized, olive backed, bright yellow chest, white underbody, long tail and having a loud song.

Habitat Description: Found in dense brushy areas, streamside tanlges and brushy hillsides.

Loggerhead Shrike
(*Lanius ludovicianus*)



Source: I. Taylar, Wikimedia Commons

Federal Status: USFWS Bird of Conservation Concern

Critical Habitat: None

State Status: Species of Special Concern

Species Description: Gray, black and white bird of open areas. Uses its hooked beak to grab prey (insects, lizards, mice, other birds) and impales them on thorns or other sharp objects.

Habitat Description: Found in shrublands and woodlands having a large short grassy areas with limited trees and shrubs.

Nuttall's Woodpecker
(Picoides nuttallii)



Source: M. Baird, Wikimedia Commons

Federal Status: USFWS Bird of Conservation Concern

Critical Habitat: None

State Status: None

Species Description: Small black and white woodpecker having a barred back except the upper which is unbarred.

Habitat Description: Oak woodlands

Purple Martin
(Progne subis)



Source :Wikimedia Commons

Federal Status: None

Critical Habitat: None

State Status: Species of Special Concern

Species Description: Large broad swallow. Males dark glossy bluish black, brown females. Colonial.

Habitat Description: Often nest in woodpecker holes

American Yellow Warbler
(*Setophaga petechia*)



Source: PRBO, S. Zack

Federal Status: USFWS Bird of Conservation Concern

Critical Habitat: None

State Status: Species of Special Concern

Species Description: Small, bright yellow warbler.

Habitat Description: Willows, wet thickets, shrublands.

Rufous Hummingbird
(*Selasphorus rufus*)



Source: L.A. Fuertes, Wikimedia Commons

Federal Status: USFWS Bird of Conservation Concern

Critical Habitat: None

State Status: None

Species Description: Small and feisty. Orange males and green and orange females.

Habitat Description: Open areas along forest edges, often nest in shrubs or conifers.

Allen's Hummingbird
(Selasphorus sasin)



Source: Asicnewbie, Wikimedia Commons

Federal Status: USFWS Bird of Conservation Concern

Critical Habitat: None

State Status: None

Species Description: Similar in appearance to rufous hummingbird, difficult to distinguish.

Habitat Description: Brushy woods primarily along the coastside.

Lawrence's Goldfinch
(Spinus lawrencei)



Source: L. Tanner, Wikimedia Commons

Federal Status: USFWS Bird of Conservation Concern

Critical Habitat: None

State Status: None

Species Description: Small finch, gray back and sides, yellow chest and wingbars, black or gray face.

Habitat Description: Dry open woods, near brushy areas usually near a water source.

Least Bell's Vireo
(Vireo bellii pusillus)



Source: PRBO, J. Gallagher, Sea and Sage Audubon

Federal Status: Endangered

Critical Habitat: Designated

State Status: Endangered

Species Description: Small songbird, olive gray above, whitish below. Faint white eye band.

Habitat Description: Dense shrubbery and willows.

BIRDS: WATER ASSOCIATED, i.e. PELICANS, GULLS, TERNS, RAILS, COMORANTS

**Marbled Murrelet
(*Brachyramphus marmoratus*)**



Source: Tom Hamer

Federal Status: Threatened
Critical Habitat: Designated
State Status: Endangered

Species Description: Small seabird (8 inches) with dark and/or mottled upper plumage and light, mottled underparts. Entire lifespan spent within ocean environments except for breeding occurring within old-growth forest habitats.

Habitat Description: San Mateo and Santa Cruz counties are near the southern extent of the species breeding range. Begin breeding in April/May where utilize large trees with nest “platform” branches extending out from main trunk of tree to build small nest. Occurs in Purisima Creek Redwoods, and potentially suitable and federally designated Critical Habitat are located within the District’s boundaries.

**Western Snowy Plover
(*Charadrius alexandrinus nivosus*)**



Source: Western Snowy Plover.org

Federal Status: Threatened
Critical Habitat: None
State Status: Species of Special Concern

Species Description: small shorebird with distinctive markings.

Habitat Description: Found along beaches, salt marshes and barren ground associated with the Bay front and Ocean. Critical habitat is found adjacent o Ravenswood OSP.

Least Bittern
(*Ixobrychus exilis*)



Source: Lower Colorado Multi-Species Conservation Program

Federal Status: USFWS Bird of Conservation Concern

Critical Habitat: None

State Status: Species of Special Concern

Species Description: Small wading bird, the smallest heron in the US. White throat, face and sides of neck are brownish, male may have glossy green on back and crown.

Habitat Description: Marshes. Found along the Bay front.

California Gull
(*Larus californicus*)



Source: Dick Daniels

Federal Status: None

Critical Habitat: None

State Status: CDFW watchlist

Species Description: Medium gull, yellow bill with black ring near tip. Colonial. Preys on least terns.

Habitat Description: Lakes and marshes. Found along the Bay front.

California Black Rail
(*Ixobrychus exilis*)



Source: Danika Tsao, USGS

Federal Status: USFWS Bird of Management Concern

Critical Habitat: None

State Status: Threatened, Fully Protected

Species Description: Very small secretive bird

Habitat Description: Salt and fresh water marshes.
Found along the Bay front.

Long Billed Curlew
(*Numenius americanus*)



Source: Alan D. Wilson, www.naturespicsonline.com

Federal Status: USFWS Bird of Management Concern

Critical Habitat: None

State Status: Watch list

Species Description: Large shorebird, with long down curved bill/ brownish in color.

Habitat Description: Breeds in grasslands in the central US. Shorebird, found along the Bay front.

AMERICAN WHITE PELICAN
(*Pelecanus erythrorhynchos*)



Source: Enayetur Raheem

Federal Status: None
Critical Habitat: None
State Status: Species of Special Concern

Species Description: Large white Pelican with an orange bill.

Habitat Description: Shorebird, found along the Bay front, breeds inland.

CALIFORNIA BROWN PELICAN
(*Pelecanus occidentalis californicus*)



Source: USFWS

Federal Status: None
Critical Habitat: None
State Status: Species of Special Concern

Species Description: Although a large bird, it is one of the smallest pelicans. A multicolored bird whose bill turns red during the breeding season.

Habitat Description: Breeds in the Channel Islands south to Mexico

DOUBLE CRESTED CORMORANT
(*Pelecanus occidentalis californicus*)



Source: English Wikipedia

Federal Status: None
Critical Habitat: None
State Status: CDFW Watchlist

Species Description: Large black fishing bird with an orange face. Often seen spreading their wings to dry.

Habitat Description: Fresh and saltwater areas including ponds, lakes, rivers, creeks, bays, and ocean.

Virginia Rail
(*Rallus limicola*)



Source: Don Roberson

Federal Status: Endangered
Critical Habitat: None
State Status: Endangered, Fully Protected

Species Description: Medium sized secretive bird with a downward curving bill, gray brown overall, with an orange breast. Rarely flies.

Habitat Description: Found primarily in slat marshes along San Francisco Bay, Monterey Bay, and Morro Bay.

CALIFORNIA LEAST TERN
(*Sternula antillarum browni*)



Source: USFWS

Federal Status: Endangered
Critical Habitat: None
State Status: Endangered, Fully Protected

Species Description: Long narrow wings and a broad forked tail. Black cap on head with white across the forehead.

Habitat Description: Found along the Bayfront.

ELEGANT TERN
(*Thalasseus elegans*)



Source: Don Roberson

Federal Status: None
Critical Habitat: None
State Status: CDFW Watchlist

Species Description: .Medium tern, orange bill, pale gray upper and lower with black legs. .White on forehead in winter.

Habitat Description: Primarily a seabird that is sometimes found at inland lakes near the coast.

BIRDS: OWLS AND RAPTORS

Northern Goshawk (*Accipiter gentilis*)



Source: Birds and Nature 1904, Wikimedia Commons

Federal Status: None
Critical Habitat: None
State Status: Species of Special Concern

Species Description: Large raptor with a long tail and dark cap with white stripe through the eye.

Habitat Description: Deciduous and coniferous forests. Prefer old growth.

Sharp-shinned Hawk (*Accipiter striatus*)



Source: Abdoozy, Wikimedia Commons

Federal Status: None
Critical Habitat: None
State Status: CDFW Watchlist

Species Description: Very small hawk with a long tail,

Habitat Description: Breed in deep forests, hunt along forest edges.

Golden Eagle
(*Aquila chrysaetos*)



Source: USFWS

Federal Status: USFWS Bird of Management Concern

Critical Habitat: None

State Status: Fully Protected

Species Description: Dark brown large eagle with broad wings.

Habitat Description: Avoid developed areas and hunt in open areas dominated by native species.

Short-eared Owl
(*Asio flammeus*)



Source: nigel, wikimedia commons

Federal Status: None

Critical Habitat: None

State Status: Species of Special Concern

Species Description: Mottled brown, medium sized owl, flies close to the ground.

Habitat Description: Open grasslands.

Long-eared Owl
(Asio otus)



Source: J. Couperus, Wikimedia Commons

Burrowing Owl
(Athene cunicularia)



Source: T. Llovet, Wikimedia Commons

Federal Status: None

Critical Habitat: None

State Status: Species of Special Concern

Species Description: Medium to large brown owl with large ear tufts and an orange facial disk.

Habitat Description: Roosts and nests in trees by day and hunts at night.

Federal Status: USFWS Bird of Conservation Concern

Critical Habitat: None

State Status: Species of Special Concern

Species Description: Very small long legged owl, yellow eyes, often active during the day.

Habitat Description: Nests in open grassland and rangelands.

Ferruginous Hawk
(*Buteo regalis*)



Source: D. Sherony, Wikimedia Commons

Federal Status: USFWS Bird of Conservation Concern

Critical Habitat: None

State Status: None

Species Description: Large rust colored hawk having a white chest.

Habitat Description: Grasslands and pasture.

Swainson's Hawk
(*Buteo swainsoni*)



Source: Itshears, Wikimedia Commons

Federal Status: USFWS Bird of Conservation Concern

Critical Habitat: None

State Status: Threatened

Species Description: Small to medium hawk with a dark chest band.

Habitat Description: Grasslands and pasture.

Northern Harrier
(Circus cyaneus)



Source: Naumann, Wikimedia Commons

Federal Status: None
Critical Habitat: None
State Status: Species of Special Concern

Species Description: Slim long tailed hawk, white patch at base of tail. Has an owl-like face.

Habitat Description: Grasslands, pastures and marshes.

White-tailed Kite
(Elanus leucurus)



Source: G, Schechter, Wikimedia Commons

Federal Status: None
Critical Habitat: None
State Status: Fully Protected

Species Description: Medium sized, bright white raptor, often seen hovering when hunting for food.

Habitat Description: Open grasslands.

Merlin
(*Falco columbarius*)



Source: Cephas, Wikimedia Commons

Federal Status: None
Critical Habitat: None
State Status: CDFW Watchlist

Species Description: A small but robust falcon. Hunt songbirds and shorebirds.

Habitat Description: Nest in forested openings and edges, especially along creeks and rivers. Hunt in open grasslands open shoreline and forests.

American Peregrine Falcon
(*Falco peregrinus anatum*)



Source: Amada44, Wikimedia Commons

Federal Status: USFWS Bird of Conservation Concern
Critical Habitat: None
State Status: Fully Protected

Species Description: Large falcon with pointed wings. Wingtips are black. Top of head dark, pale sides of neck and throat. Hunts other birds, mammals, lizards and insects.

Habitat Description: Nest in tall cliffs, rocks or human constructed features. Often seen hunting near coastal areas.

Bald Eagle
(*Haliaeetus leucocephalus*)



Source: K.Thomas, Wikimedia Commons

Federal Status: USFWS Bird of Management Concern

Critical Habitat: None

State Status: Endangered, Fully Protected

Species Description: Adults have characteristic white head and tail and brown body.

Habitat Description: Prefers large wetlands, lakes, bays, and rivers with surrounding old growth or mature conifer stands to perch, roost and nest.

Osprey
(*Pandion haliaetus*)



Source: NASA, Wikimedia Commons

Federal Status: None

Critical Habitat: None

State Status: CDFW Watchlist

Species Description: A large fish eating bird brown on the upper and grey to white below. Nest in the open on poles, trees, snags often over water.

Habitat Description: Near any body of water.

Cooper's Hawk
(*Accipiter cooperii*)



Source: National Parks Service

Federal Status: None

Critical Habitat: None

State Status: CDFW Watchlist

Species Description: A medium-sized hawk with the classic accipiter shape: broad, rounded wings and a very long tail. In Cooper's Hawks, the head often appears large, the shoulders broad, and the tail rounded. Adults are steely blue-gray above with warm reddish bars on the underparts and thick dark bands on the tail. Juveniles are brown above and crisply streaked with brown on the upper breast, giving them a somewhat hooded look compared with young Sharp-shinned Hawks' more diffuse streaking. Source All About Birds

Habitat Description: Wooded habitats from deep forests to leafy subdivisions and backyards. Source All About Birds.

FISH

COHO SALMON (*Oncorhynchus kisutch*)



Source: Trout Unlimited

STEELHEAD (*Oncorhynchus mykiss*)



Source: Trout Unlimited

**Central California Coast
Evolutionarily Significant Unit (ESU)**
(extending from Punta Gorda to San Lorenzo River)

Federal Status: Endangered
Critical Habitat: Designated
State Status: Endangered

Species Description: Average adult size is 6 to 12 lbs, though adults can reach over 30 lbs. Adults return at approximately 3 years of age to natal stream to spawn, then die. Ocean-going adult fish have blue sides, transitioning to red sides as they return to freshwater streams to spawn.

Habitat Description: Coho salmon fry spend first year to year and a half in freshwater streams before migrating to the ocean to spend another year to year and a half. Coho spawn in larger streams within the District's boundaries including: the main stem of Pescadero, San Gregorio and Gazos Creeks.

**Central California Coast
Distinct Population Segment (DPS)**
(extending from Russian River to Aptos Creek)

Federal Status: Threatened
Critical Habitat: Designated
State Status: None

Species Description: Average adult size is 8 to 11 lbs, though adults can reach 40 lbs. Steelhead have the most variable life history of all salmonid species, juvenile fish typically spend from 1 to 3 years in fresh water before maturing in the ocean from 1 to 4 growing seasons. Some individuals are capable of remaining in freshwater for their entire life cycle.

Habitat Description: Steelhead can survive in a wide variety of habitat conditions and tolerate much wider range of stream conditions than Coho salmon. Accompanying maps show distribution and Critical Habitat within the District's boundaries.

MAMMALS: BATS

Pallid Bat

(Antrozous pallidus)



Source: G. Galice, Wikimedia Commons

Federal Status: None

Critical Habitat: None

State Status: Species of Special Concern

Species Description: Medium sized bat (3-5 inch length) with large, long wide ears and large eyes. Insectivorous, but may also eat rodents or lizards. Mates from October to February, birth late in spring to early summer. Nocturnal.

Habitat Description: Hibernate in rock crevices and buildings. Prefer rocky openings and grasslands

Townsend's Big-eared Bat

(Corynorhinus townsendii)



Source: Bureau of Land Management

Federal Status: None

Critical Habitat: None

State Status: Species of Special Concern

Species Description: Medium sized bat (4-6 inch length), with extremely long ears and lumps on the side of the snout. Insectivorous. Mates late in fall, birth late in spring to early summer. Male and Female occupy separate roost sites. Nocturnal.

Habitat Description: Any variety of habitat near caves or other roosting areas.

Western Red Bat
(*Lasiurus blossevillii*)



Source: Pima County

Federal Status: None
Critical Habitat: None
State Status: Species of Special Concern

Species Description: Solitary small to medium sized bat. Insectivorous. Mates late in fall, with birth late in spring to early summer. Nocturnal.

Habitat Description: Riparian areas and woodlands. Roosts singly in broad leaved trees such as willows and in fruit and nut orchards.

Hoary Bat
(*Lasiurus cinereus*)



Source: Bureau of Land Management

Federal Status: None
Critical Habitat: None
State Status: None
Other: Western bat Working Group, medium concern

Species Description: Medium sized furry bat (5-6 inches in length). . Insectivorous. Mates in fall, with birth late in early summer. Nocturnal.

Habitat Description: Prefers woodlands and coniferous forests and hunts over open areas or lakes. Roosts singly in trees or with other bats in caves.

Long-eared Myotis
(Myotis evotis)



Source: Smithsonian

Federal Status: None

Critical Habitat: None

State Status: None

Other: Western bat Working Group, medium concern

Species Description: Small furry bat (3 inches in length) with large, long black ears. Insectivorous. Mates from October to February, birth late in spring to early summer. Nocturnal.

Habitat Description: Shrublands and coniferous forests. Roost under tree bark, in hollow trees or caves.

Fringed Myotis
(Myotis thysanodes)



Source: Smithsonian

Federal Status: None

Critical Habitat: None

State Status: None

Other: Western bat Working Group, high concern

Species Description: Small furry bat (3 inches in length) with short wings. Insectivorous. Mates from October to February, birth late in spring to early summer. Nocturnal.

Habitat Description: Shrublands and coniferous forests. Roost in hollow trees or caves.

Long-legged Myotis
(*Myotis volans*)



Source: Smithsonian

Federal Status: None

Critical Habitat: None

State Status: None

Other: Western bat Working Group, high concern

Species Description: Small furry bat (3 inches in length). Insectivorous. Mates from October to February, birth late in spring to early summer. Nocturnal.

Habitat Description: Coniferous forests and oak woodlands. Roost in hollow trees, rocks, or caves.

MAMMALS: NON-BAT

Ring-tailed Cat (*Bassariscus astutus*)



Source: US Forest Service

Federal Status: None
Critical Habitat: None
State Status: Fully Protected

Species Description: Member of the raccoon family. Light to dark brown in color with a long distinctive ringed tail. Usually smaller than a housecat. Nocturnal. Mate in the spring, cubs born in the summer. Excellent climber

Habitat Description: Rocky and riparian areas; nests in hollow trees.

Santa Cruz Kangaroo Rat (*Dipodomys venustus venustus*)



Source: Smithsonian

Federal Status: None
Critical Habitat: None
State Status: None
Other: Locally Rare

Species Description: Small narrow faced burrowing mammal with large hind legs used for jumping. Gathers seeds in their cheek pouches,

Habitat Description: Primarily found in Manzanita chaparral located in the sand hills of the Santa Cruz Mountains.

**SAN FRANCISCO DUSKY-FOOTED
WOODRAT**
(*Neotoma fuscipes annectens*)



Source: B Moose Peterson

Federal Status: None
Critical Habitat: None
State Status: Species of Special Concern

Species Description: Medium sized rodent up to 7 inches in length (excluding tail) with large ears and eyes. Fur on underside of body lighter than that on back and sides. Tail has fur on upper side.

Habitat Description: Relatively common and widespread throughout hardwood and mixed forest types. Mounded stick lodges can extend up to 8 feet across. Adults build multiple lodges in colonies throughout their range. Distributed widely throughout the District and found in virtually all vegetation types.

Mountain Lion
(*Puma Concolor*)



Source: USFWS

Federal Status: None
Critical Habitat: None
State Status: Specially Protected Species*

*Based on their “specially protected species” designation, the District recognizes mountain lions as a “special status species” but they are not mapped as they are presumed to potentially occur virtually anywhere throughout the District.

Species Description: Large solitary nocturnal cat..

Habitat Description: Relatively common and widespread throughout the District.

SALT MARSH HARVEST MOUSE
(*Reithrodontomys raviventris*)



Source: Galli Basson

Federal Status: Endangered

Critical Habitat: None

State Status: Endangered, fully protected

Species Description: Tiny mouse found in the tidal salt marshes surrounding the San Francisco Bay. It is a grooved-toothed mouse having a tail generally shorter than its body length. The mouse is very small, weighing only 9-14 grams and is approximately 3 inches in length.

Habitat Description: Salt marshes, especially those containing pickleweed (*Salicornia* spp.). The salt marsh harvest mouse is found at the District's two bayside Preserves: Ravenswood and Stevens Creek Nature Study Area.

Salt-marsh Wandering Shrew
(*Sorex vagrans halicoetes*)



Source: Cal Academy of Sciences

Federal Status: None

Critical Habitat: None

State Status: Species of Special Concern

Species Description: Small to medium sized rodent.

Habitat Description: Salt marshes along the San Francisco bay.

American Badger
(*Taxidea taxus*)



Source: US Fish and Wildlife Service

Federal Status: None

Critical Habitat: None

State Status: Species of Special Concern

Species Description: Stocky low to the ground carnivorous mammal with large claws. Grayish coat with white and black markings on the head.

Habitat Description: Open grasslands preferably with sandy loamy soils having available prey (mice squirrels etc.)

REPTILES

WESTERN POND TURTLE (*Actinemys marmorata*)



Source: Gerald and Buff Corsi

Coast Horned Lizard (*Phrynosoma blainvillii*)



Source: G. Nafis, CalHerps

Federal Status: None

Critical Habitat: None

State Status: Species of Special Concern

Species Description: Average adult size is 15 to 18 inches. Carapace (shell) is a dark brown or dull olive with darker marks or streaking pattern. Plastron (breast plate) can be a yellowish, sometimes with dark areas. The foot is webbed to the base area of the claws. Sides of head lacks any colored stripes.

Habitat Description: Pond turtles are found within and near a wide variety of wetland habitats, typically ponds, marshes, and slow moving streams. Habitats include adequate vegetative cover and exposed basking sites such as logs and boulders. Accompanying maps show distribution within the District's boundaries.

Federal Status: None

Critical Habitat: None

State Status: Species of Special Concern

Species Description: Average adult size is 2.5 to 4.5 inches long. Flat wide bodied lizard having distinctive pointy "horns" (scales) on its head. Multicolored lighter below. Primarily eats ants.

Habitat Description: Prefers sandy soils with sparse vegetation. Can be found in grasslands, shrublands, coniferous forests and woodlands.

SAN FRANCISCO GARTER SNAKE
(*Thamnophis sirtalis tetrataenia*)



Source: Don Roberson

Federal Status: Endangered

Critical Habitat: Designated

State Status: Endangered, Fully Protected

Species Description: Medium sized snake from 1 to 3 feet in length with copper colored head, and solid red stripe along sides of body and faint turquoise stripes and underside. Diurnally active during summer, hibernate during winter.

Habitat Description: Most commonly found around ponds, marshes, and other wetlands that support prey species, particularly California red-legged frog. May also be found in upland areas near aquatic habitats.