

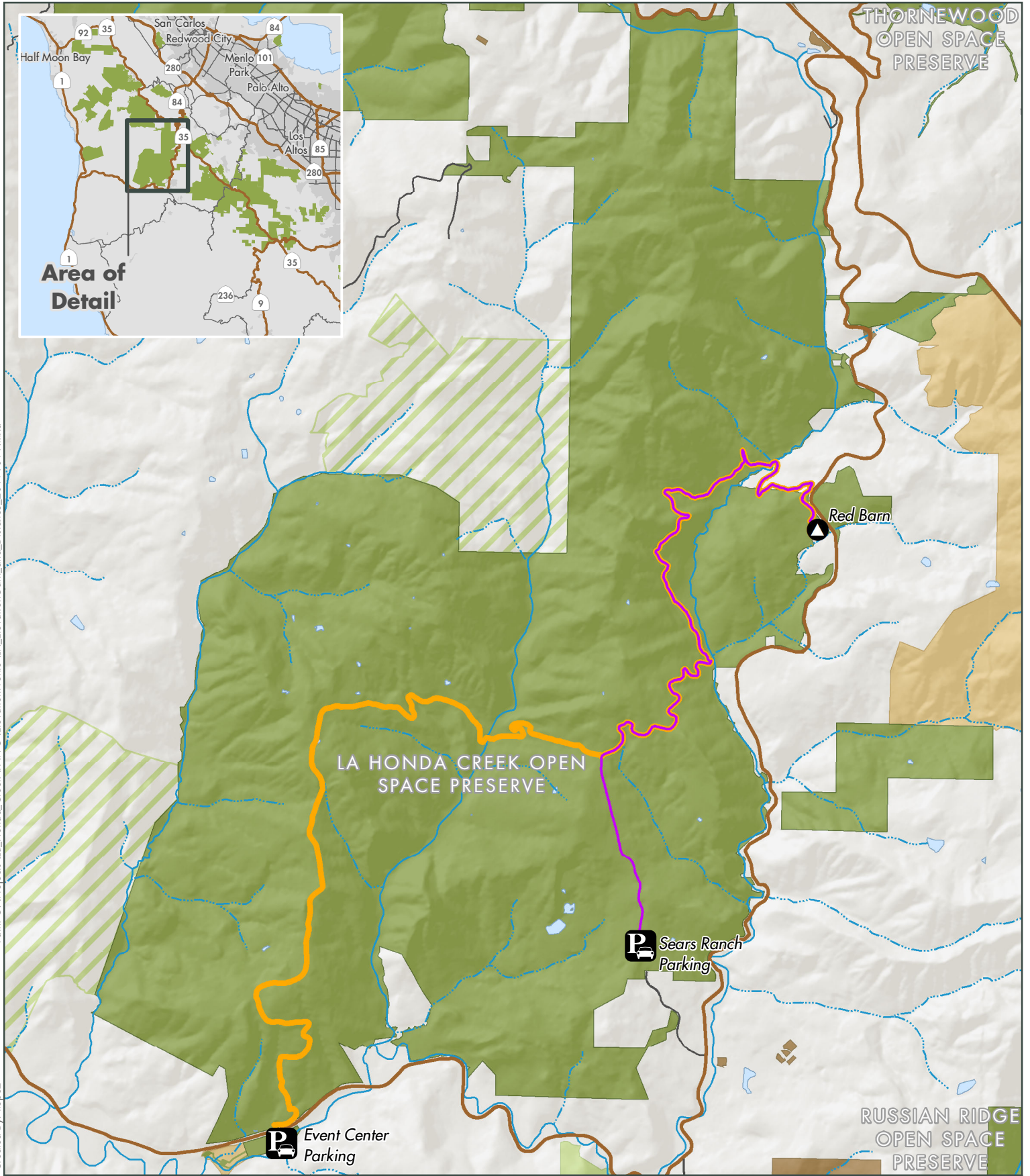
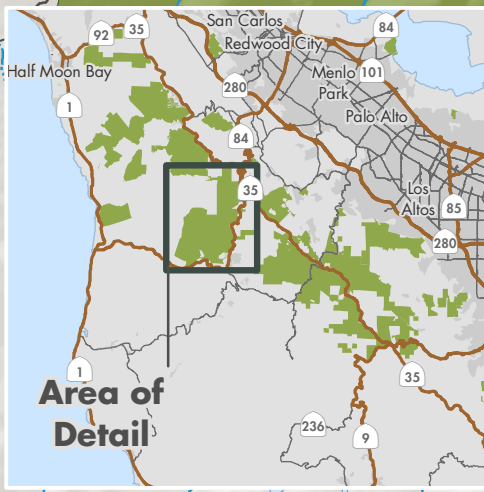


Alternatives Suggested by Members of the Public



Below are ideas raised by the public/community at previous Red Barn meetings addressing how to achieve the project goal, to open the central area of the preserve. Sharing this information is intended to help the PAWG understand what was suggested by the public, including members of the La Honda community and to be mindful of these ideas as you observe and experience sites while on the site tour.

- Enlarge Sears Ranch Road parking lot
 - Add equestrian trailer parking
- Move the parking lot to the Event Center
- Shuttle Access
 - From Event Center or alternative parking lot location
 - Have limited hours of shuttling
- Consider other locations South of Red Barn site
- Increase accessibility by public transportation
- Permit parking
- Paid parking
 - Only enforced on weekends
- Purchase another access “gateway” property
- Consider an alternative location along Skyline
- Add “No parking” signs on Highway 84
- Add reduced speed limit signs and flashing yellow caution lights on Highway 84
- Widen Highway 84 for large vehicles turning into and exiting from Red Barn
- Rather than one large parking and access point to accommodate all types of visitors (destination and drop-in), establish a number of smaller, destination type access points.
- Suggestions for the Red Barn site:
 - Move the parking lot behind the Ranger House
 - Place parking area further down the hill "behind" the Red Barn
 - Make the road and parking lot less visible from Highway 84
 - Limit parking to no more than 10 or 20 spaces at the Red Barn site
 - Move driveway further East (compass North) on Highway 84
 - Hold docent led tours at Red Barn

Path: G:\Projects\La_Honda_Creek\PAWG\ElevationProfile\UH_ElevationGain_and_Distance_20191011.mxd
Created By: Lopez



Elevation gain and distance to Red Barn area

-  Sears Ranch to Redbarn: 4.5 miles; 1,000 feet gained
-  Event Center to Redbarn: 8 miles; 2,000 feet gained

Midpeninsula Regional
Open Space District
(Midpen)
10/14/2019



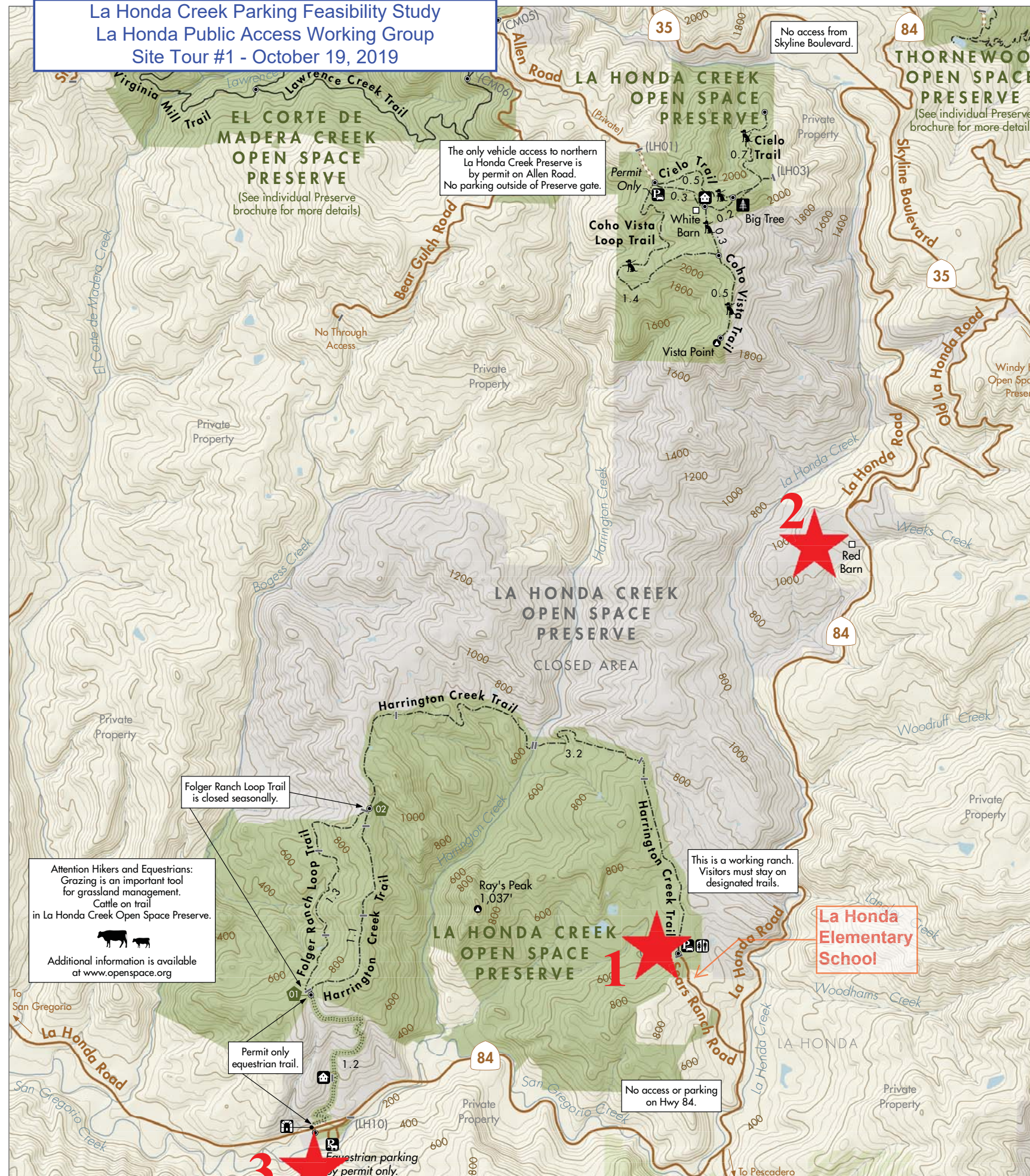
While the District strives to use the best available digital data, these data do not represent a legal survey and are merely a graphic illustration of geographic features.

La Honda Creek Parking Feasibility Study
 La Honda Public Access Working Group
 Site Tour #1 - October 19, 2019



La Honda Creek
 Open Space Preserve

For More Information
 Visit www.openspace.org
 or call (650) 691-1200



Map Legend

- Midpen Preserve
- Closed Area - No Public Access
- Other Public Land
- Other Public Land - Restricted Access
- Private or Leased Land - No Public Access
- No Public Entry in Midpen Water Areas
- Road
- Vehicle Driveway
- Equestrian Only
- Hiking, Equestrian
- Hiking, Bicycling, Equestrian
- Trail Junction
- Numbered Trail Junction
- Gate (#)
- Parking Lot
- Equestrian Parking
- Restroom
- Point of Interest
- Notable Flora
- Tunnel
- Other Public or Private Building
- Residence

- 1** Sears Ranch Road stop
- 2** Red Barn stop
- 3** Event Center stop

- Dogs on Leash Permitted on Designated Trails
- Bicycles not permitted in this Preserve

**In case of emergency, call 911
 or 24-hour Ranger Dispatch
 at (650) 968-4411.**

For your safety,
 and the protection of the preserves:
 The preserve is open from dawn until one-half hour after sunset;
 Please leave natural features, plants, and animals undisturbed;
 Pack it in, pack it out- please do not litter;
 Auto burglaries are increasing;
 Take valuables with you and lock your vehicle.



© MROSD 10/11/2018



Midpeninsula Regional
Open Space District

La Honda Creek Parking Feasibility Study
Site Tour #1 – October 19, 2019
Project Goals and Objectives – Assessment of Tour Sites

Project Specific Site Assessment Criterion	Sears Ranch Road Parking Area Expansion	Red Barn	Event Center
Establish new public access in the central portion of La Honda Creek Open Space Preserve			
Design elements to reflect the rural character of the site and the Red Barn			
Provide safe public access			
Balance public access with grazing activities and other uses			

