



La Honda Creek Open Space Preserve

For more information, visit <https://www.openspace.org/maps> or call 650-691-1200.

Map Legend

- Midpen preserve
- Closed area
- Other protected land
- Private property (no public access)
- No public entry in Midpen water areas
- Road
- Vehicle driveway
- Hiking, equestrian trail
- Hiking, bicycling, equestrian trail
- Easy-access trail
- Bay Area Ridge Trail
- Trail distance (miles)
- Numbered trail junctions
- Gate (#)
- Parking area
- Equestrian parking area
- Restroom
- Point of interest
- Notable flora
- Tunnel
- Other public or private building
- Easy-access trail
- Bench
- Residence
- Water trough (nonpotable)

- Dogs on leash permitted on designated trails.
- Bicycles not permitted in this preserve.

In case of emergency, call 911.

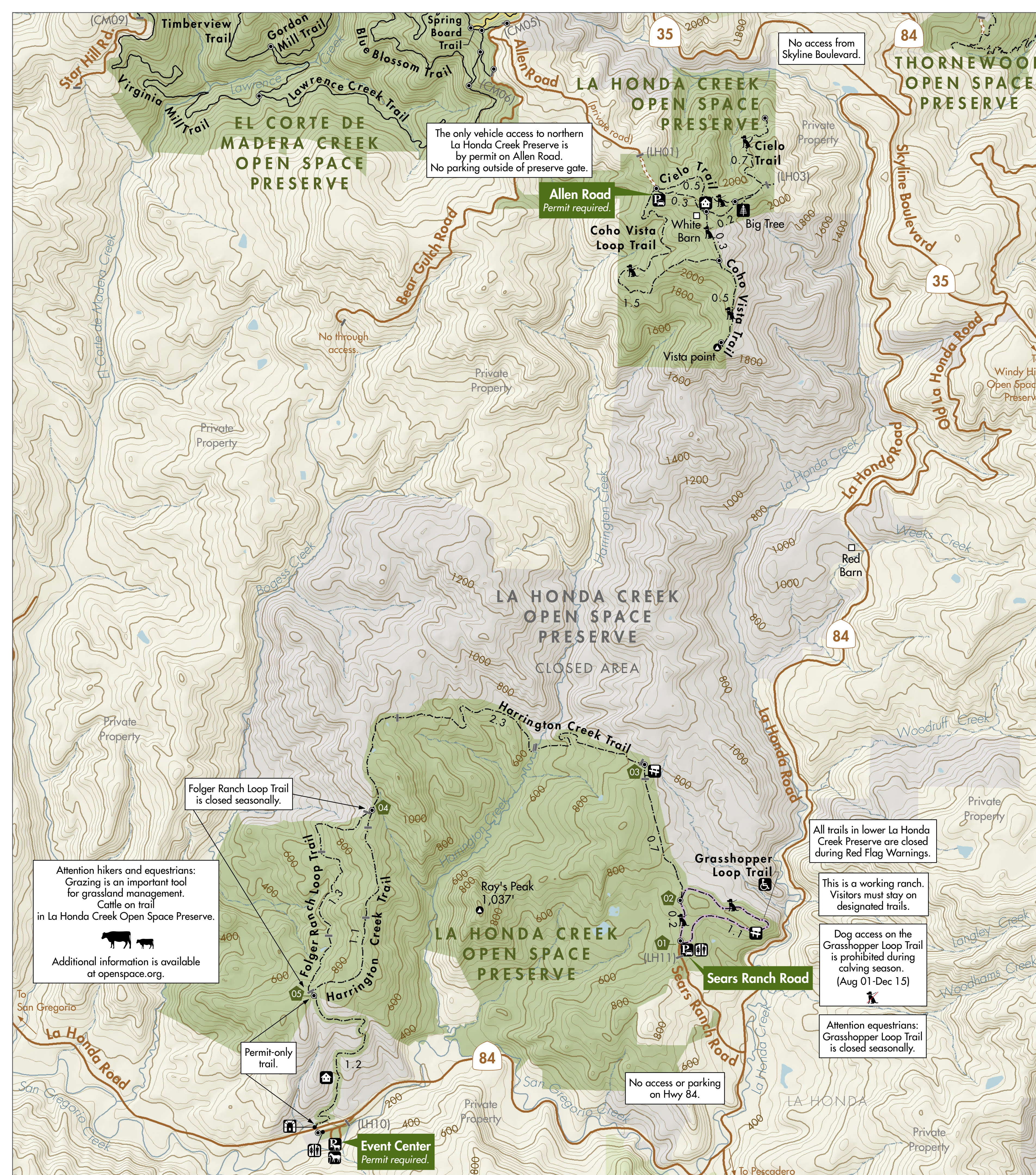
For your safety and the protection of the preserves:

The preserve is open one-half hour before official sunrise until one-half hour after official sunset.

Leave no trace: do not disturb natural features, plants or animals.

Keep it **crumb clean:** do not leave food or litter behind.

Take valuables with you and lock your vehicle.



The only vehicle access to northern La Honda Creek Preserve is by permit on Allen Road. No parking outside of preserve gate.

Allen Road
Permit required.

No access from Skyline Boulevard.

No through access.

Folger Ranch Loop Trail is closed seasonally.

Attention hikers and equestrians: Grazing is an important tool for grassland management. Cattle on trail in La Honda Creek Open Space Preserve.

All trails in lower La Honda Creek Preserve are closed during Red Flag Warnings.

This is a working ranch. Visitors must stay on designated trails.

Dog access on the Grasshopper Loop Trail is prohibited during calving season. (Aug 01-Dec 15)

Attention equestrians: Grasshopper Loop Trail is closed seasonally.

No access or parking on Hwy 84.

Event Center
Permit required.

Avenza Maps <https://link.avenza.com/144>

OuterSpatial <https://outerspatial.link/Gzi96fokpb>

Trail Explorer <https://qr.codes/V10mxx>

© Midpen 2/24/2025

Scale 1:16,000
Contour interval 40 feet

0 0.5 Mile