

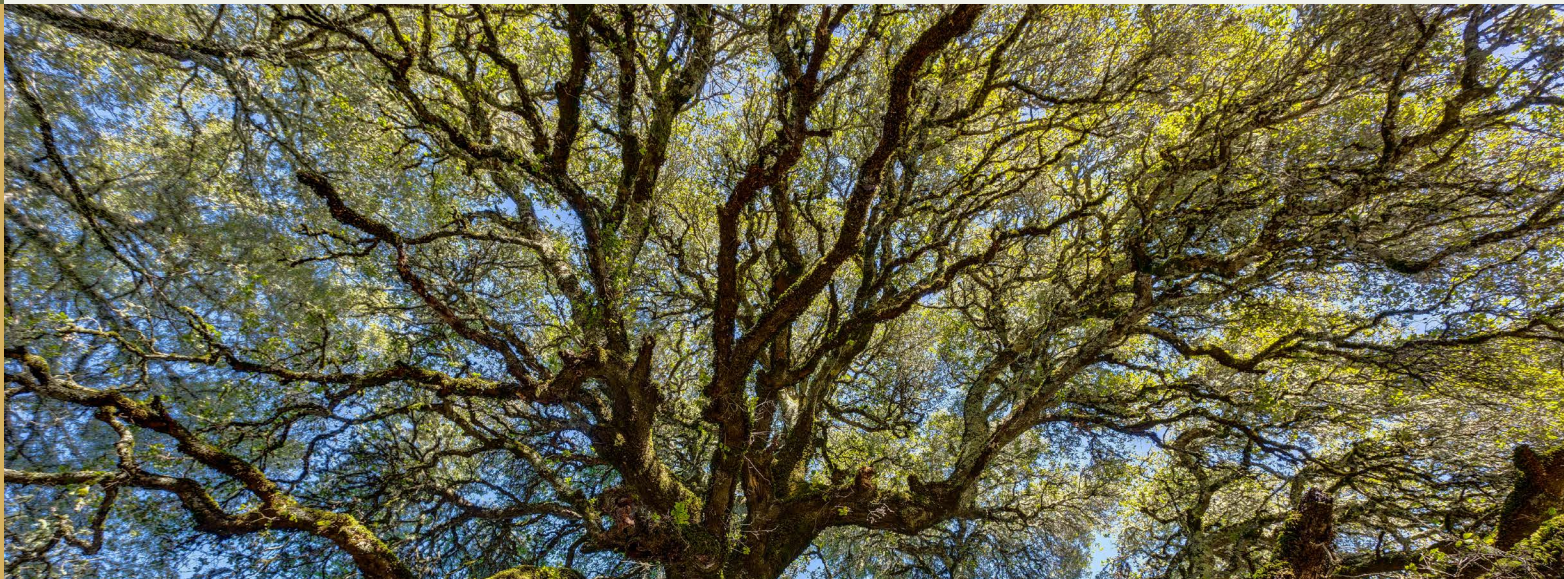


Popular Annual Financial Report

FISCAL YEAR ENDED JUNE 30, 2025



Headquarters in Los Altos, California



Los Trancos Open Space Preserve (Karl Gohl)

Table of Contents

INTRODUCTORY SECTION

- 3 Introductory Message
- 4 Board of Directors and Management
- 5 About Us
- 6 Regional Map
- 7 Organizational Chart

SUMMARY

- 8 Demographic and Economic Statistics
- 9 Revenues
- 10 Statement of Net Position
- 11 Revenues and Expenses
- 12 Debt
- 13 Award
- 14 Measure AA Projects

ACCOMPLISHMENTS

- 16 Land Acquisition and Preservation
- 17 Natural Resources Protection and Restoration
- 18 Public Access, Education and Outreach
- 19 General/Districtwide Support of Mission
- 19 Awards, Grants and Recognition

COVER PHOTO CREDITS

Top photo: Fremont Older Open Space Preserve (Konstantin Yurin)
 Second row, left to right: Coal Creek Open Space Preserve (Frances Freyberg), Fremont Older Open Space Preserve (Jack Gescheidt),
 Sierra Azul Open Space Preserve (Carter Chang)



MISSION The mission of the Midpeninsula Regional Open Space District is to acquire and preserve a regional greenbelt of open space land in perpetuity, protect and restore the natural environment, and provide opportunities for ecologically sensitive public enjoyment and education.

COASTSIDE MISSION To acquire and preserve in perpetuity open space land and agricultural land of regional significance, protect and restore the natural environment, preserve rural character, encourage viable agricultural use of land resources, and provide opportunities for ecologically sensitive public enjoyment and education.

Introductory Message

It is my pleasure to present the Midpeninsula Regional Open Space District's Popular Annual Financial Report (PAFR) for the fiscal year ended June 30, 2025.

The PAFR summarizes Midpen's financial activities and performance results gathered from our Annual Comprehensive Financial Report (ACFR). The ACFR was prepared in accordance with Generally Accepted Accounting Principles (GAAP) and includes financial statements audited by Maze & Associates, Certified Public Accountants. Midpen received an unmodified (or clean) opinion that the financial statements present fairly, in all material respects, the financial position of the organization.

The financial information in the PAFR is presented to simplify the information contained in the ACFR and to offer the public a broad overview and longer-term perspective of Midpen's assets, liabilities and net position. The reader should note that the PAFR is not a substitute for the ACFR as it is an unaudited report and does not present all the necessary financial statements and note disclosures required by GAAP.

Midpen's detailed financial information, including audited financial statements, is available in the ACFR. The ACFR provides full disclosure of our finances, including the notes to the financial statements, required supplementary information and historical statistical information.

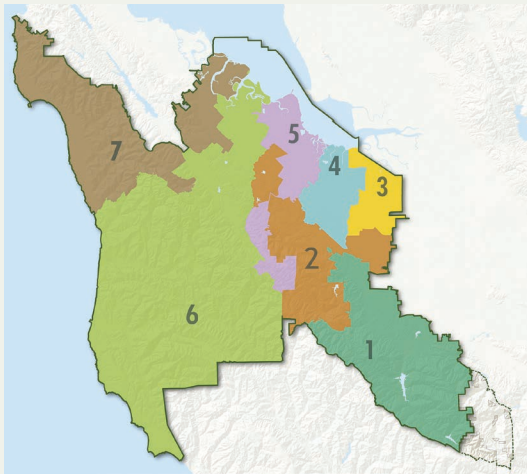
The ACFR and other financial and budget documents are available at openspace.org/financials.



Sincerely,
/s/ Ana María Ruiz

Ana María Ruiz
General Manager

Board of Directors and Management



District Wards



Left to right: Craig Gleason, Karen Holman, Margaret MacNiven, Zoe Kersteen-Tucker, Jed Cyr, Yoriko Kishimoto, Curt Riffle

Craig Gleason – Board Vice President	Ward 1: Cupertino, Lexington Hills, Los Gatos, Monte Sereno, Saratoga
Yoriko Kishimoto	Ward 2: Cupertino, Los Altos, Los Altos Hills, Loyola, Mountain View, Palo Alto, Stanford
Jed Cyr – Board President	Ward 3: Cupertino, Sunnyvale
Curt Riffle – Board Treasurer	Ward 4: Cupertino, Los Altos, Mountain View, Sunnyvale
Karen Holman	Ward 5: East Palo Alto, Menlo Park, Mountain View, Palo Alto, Sunnyvale
Margaret MacNiven	Ward 6: Atherton, La Honda, Ladera, Loma Mar, Menlo Park, North Fair Oaks, Pescadero, Portola Valley, Redwood City, West Menlo Park, Woodside
Zoe Kersteen-Tucker – Board Secretary	Ward 7: El Granada, Emerald Lake Hills, Half Moon Bay, Montara, Moss Beach, Redwood City, San Carlos, Woodside

Executive Management

Ana María Ruiz – General Manager
Hilary Stevenson – General Counsel
Mike Foster – Controller

Susanna Chan – Assistant General Manager/Project Planning and Delivery
Brian Malone – Assistant General Manager/Visitor and Field Services
Stefan Jaskulak – Chief Financial Officer/Director of Administrative Services

About Us

Midpen helps plants, animals and people thrive throughout the greater Santa Cruz Mountains region by preserving a connected greenbelt of more than 70,000 acres of open space. These diverse and scenic landscapes, from bay wetlands to redwood forests and coastal grasslands, host an incredible diversity of life, making our region one of the world's biodiversity hotspots.

Preserving, restoring and providing access to our region's iconic, cultural, working and scenic landscapes offers us opportunities for health, climate resilience and refuge. We actively manage the land and waterways to restore their health and function, helping our local ecosystem become more resilient in a time of climate change. By caring for the land, the land in turn takes care of us, providing tangible and intangible benefits like clean air and water, flood protection and the opportunity for restorative experiences in nature.

Midpen preserves have long and complex histories of human use prior to becoming open space. On the San Mateo County Coast, where local agricultural roots run deep, our mission includes preserving viable working lands. We partner with small-scale local ranchers to use conservation grazing as a land management tool for enhancing native coastal grasslands and providing wildland fire protection.

Midpen preserves are free and open to the public daily, 365 days a year, and provide an extensive trail network for environmentally sensitive public recreation. Our programming connects people to nature through experiences, including environmental interpretation, docent-led activities and volunteer opportunities.

HISTORY

The late 1960s was a time of rapid growth in the Bay Area. Through a determined and heartfelt grassroots effort by local conservationists, the Midpeninsula Regional Open Space District was created in 1972 when the Measure R "Room to Breathe" initiative was passed by Santa Clara County voters. District residents voted to expand Midpen's boundary into southern San Mateo County in 1976, and again in 1992 to a small portion of Santa Cruz County. In the late 1990s, development pressure increased on the San Mateo County Coast, threatening sensitive habitat and the area's rural heritage. This led to the 2004 Coastsides Protection Area, an extension of District boundaries to the Pacific Ocean in San Mateo County, and the addition of preserving rural character and encouraging viable, agricultural use of the land to our organizational mission.

GOVERNANCE

Midpen is governed by a seven-member publicly elected board of directors. Board members serve a four-year term and represent a geographic ward of approximately equal populations. The board holds its regular public meetings on the second and fourth Wednesdays of each month at 7 p.m., at the Midpen administrative office: 5050 El Camino Real, Los Altos, CA.

STAFFING

The staff currently includes over 200 employees in 12 departments: budget and finance, engineering and construction, general manager's office, general counsel's office, human resources, information systems and technology, land and facilities services, natural resources, planning, public affairs, real property and visitor services. Though not part of a department, the Controller is also part of the staffing numbers and like the General Manager and General Counsel reports directly to the Board of Directors.



Midpen Staff (Erin Ashford)

For more information about Midpen, visit openspace.org.

Regional Map

Midpeninsula Regional Open Space District



Preserve

Protect

Restore

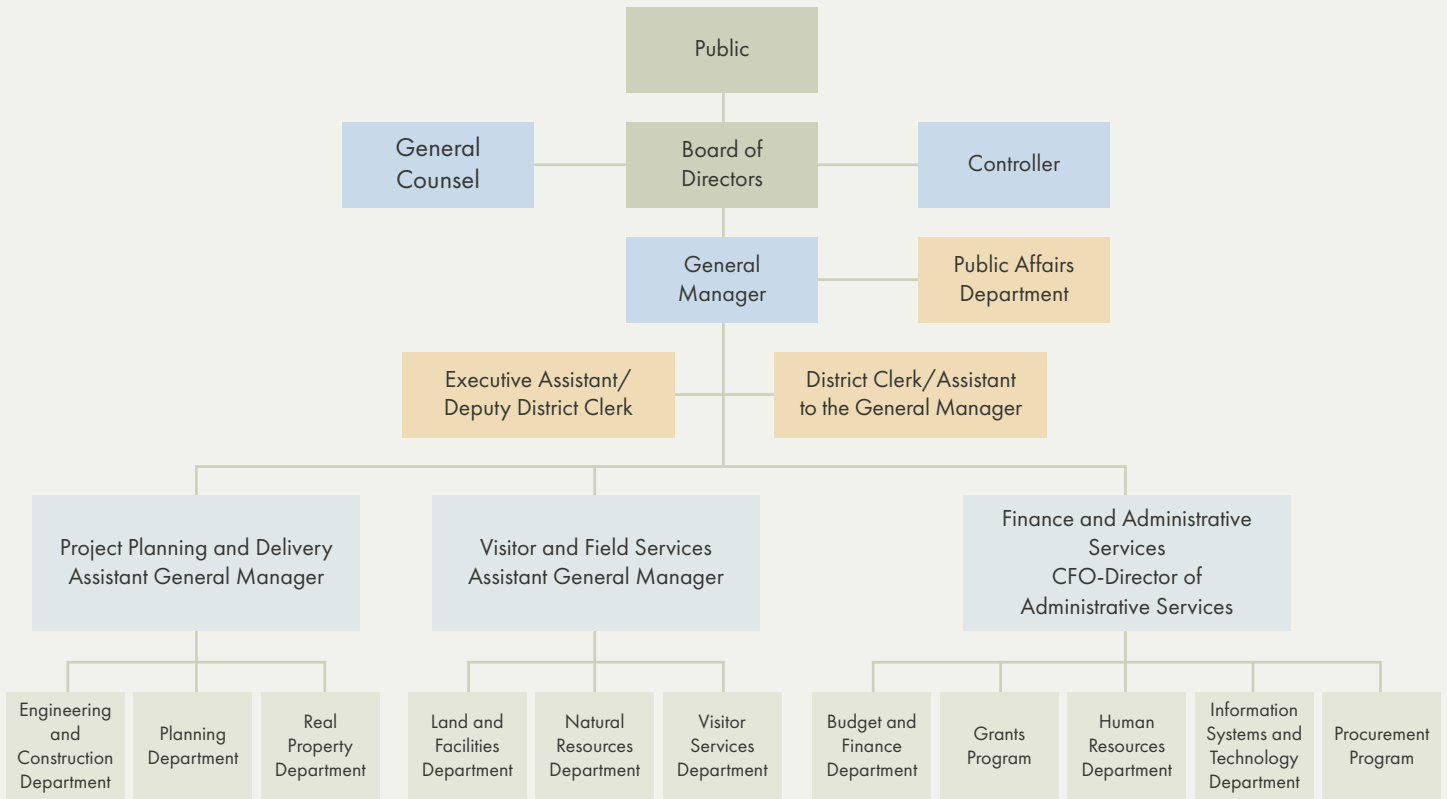
Educate

Enjoy



- | | | | | |
|----------------------------|---------------------|----------------------------|--|------------------|
| 1 Bear Creek Redwoods | 7 Fremont Older | 13 Picchetti Ranch | 19 Saratoga Gap | 25 Thornewood |
| 2 Cloverdale Ranch | 8 La Honda Creek | 14 Pulgas Ridge | 20 Sierra Azul | 26 Tunitas Creek |
| 3 Coal Creek | 9 Long Ridge | 15 Purisima Creek Redwoods | 21 Skyline Ridge | 27 Windy Hill |
| 4 El Corte de Madera Creek | 10 Los Trancos | 16 Rancho San Antonio | 22 St. Joseph's Hill | |
| 5 El Sereno | 11 Miramontes Ridge | 17 Ravenswood | 23 Stevens Creek Shoreline Nature Area | |
| 6 Foothills | 12 Monte Bello | 18 Russian Ridge | 24 Teague Hill | |

Organizational Chart



Midpen At-A-Glance



Founded in 1972



Over 70,000 Acres Preserved



Over 255 Miles of Trails



27 Preserves



219 FTEs



Over 2 Million Visitors Per Year

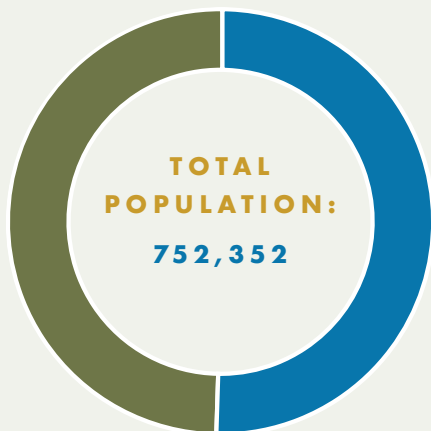


\$94.1 Million Budget



Over 750,000 Residents

Demographic and Economic Statistics



BREAKDOWN BY GENDER¹

- 50.5% Male
- 49.5% Female



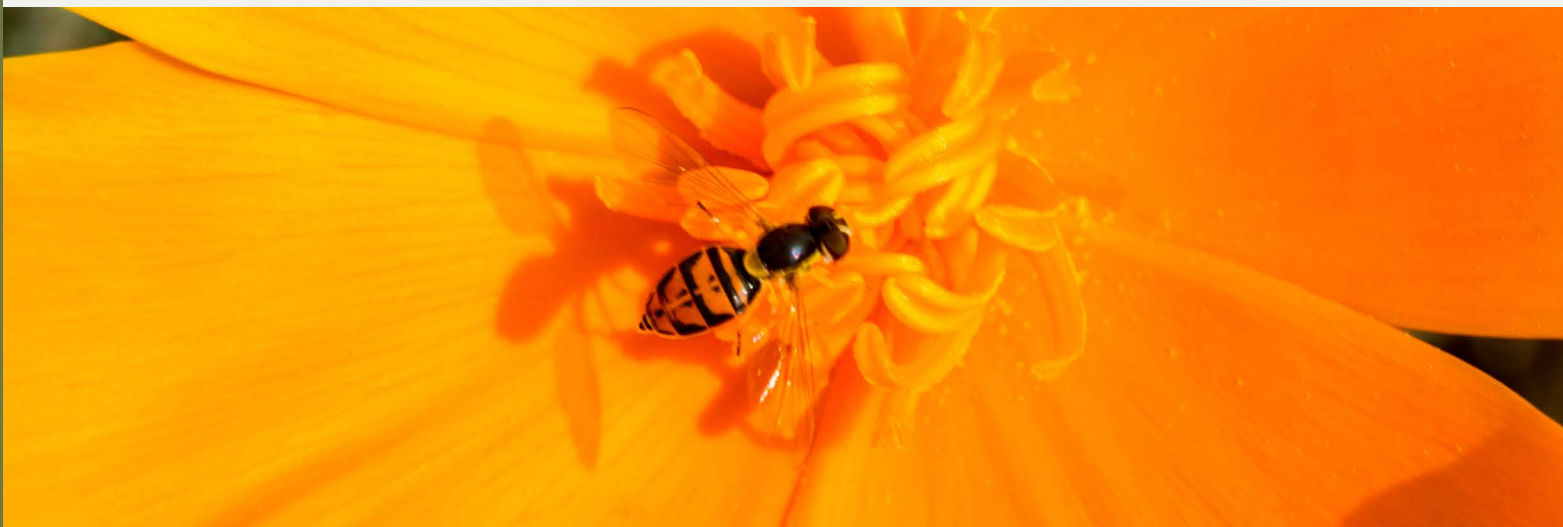
BREAKDOWN OF RACE AND ETHNICITY¹

- 0.10% American Indian and Alaska Native
- 33.37% Asian
- 1.91% Black or African American
- 18.10% Hispanic or Latino
- 0.42% Native Hawaiian and Other Islander
- 0.55% Other Race
- 4.89% Two or More Races
- 40.67% White (not Hispanic/Latino)

\$105,157 PER CAPITA INCOME¹

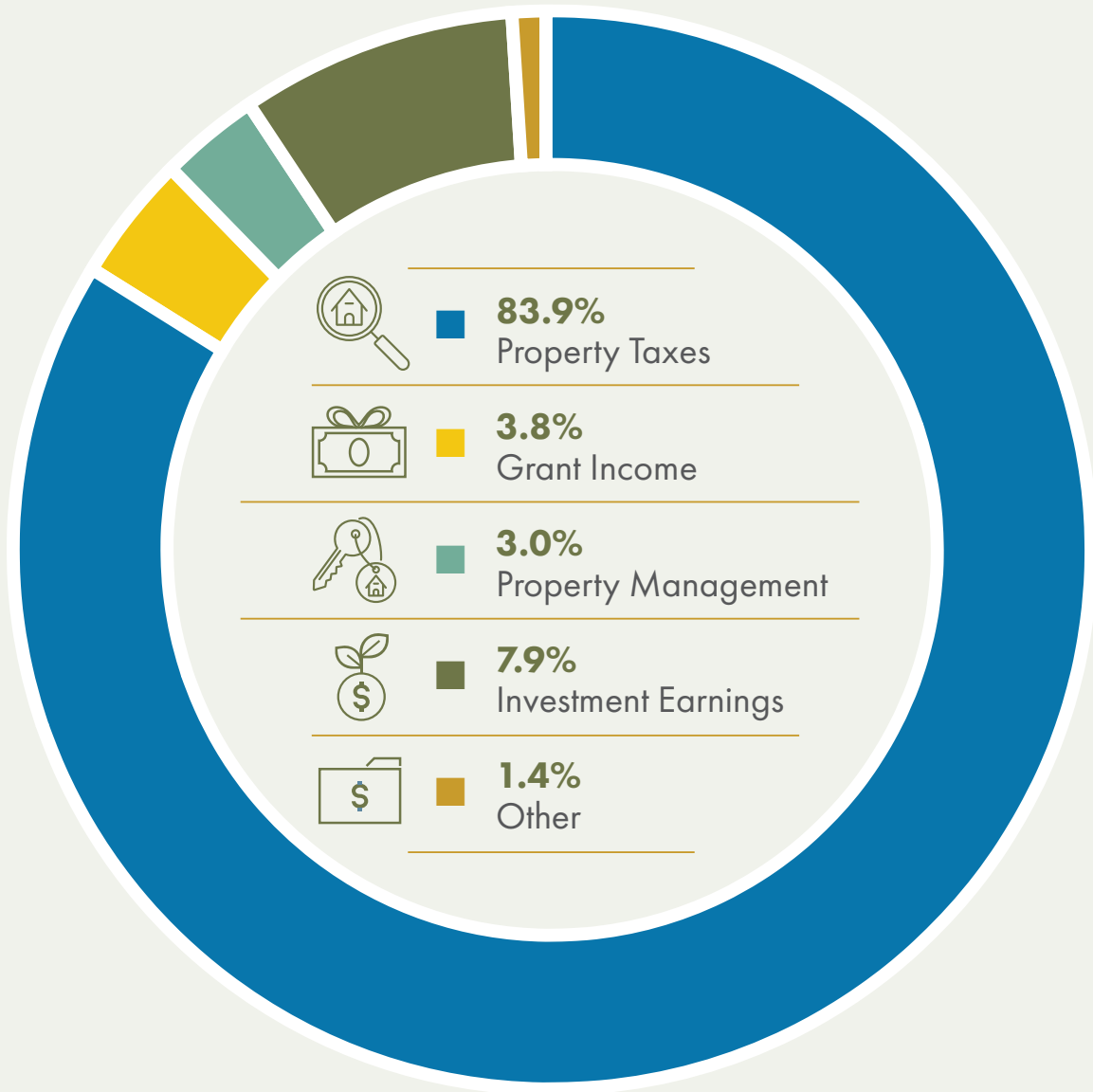
93.77% EDUCATIONAL ATTAINMENT HIGH SCHOOL OR GREATER, AGE 25 OR OVER¹

¹ 2019-23 American Community Survey 5-Year Estimates. 2020-24 American Community Survey data unavailable at publication

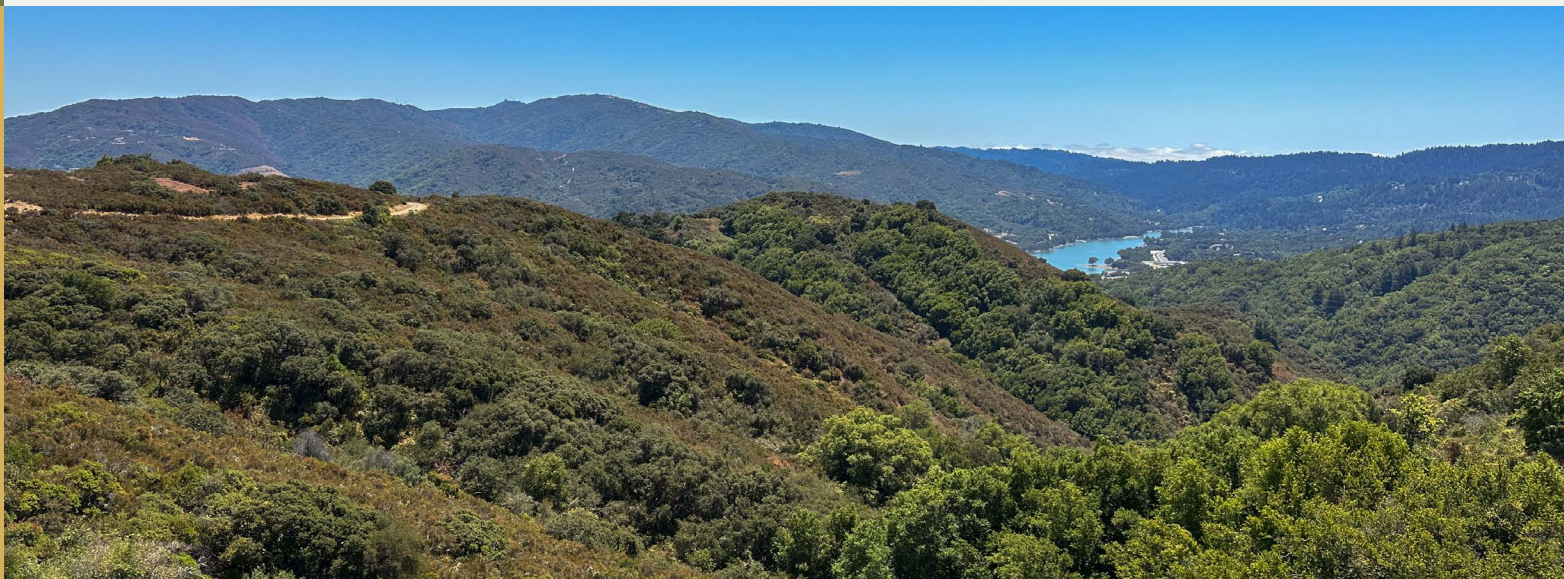


Fremont Older Open Space Preserve (Jim Mosher)

Revenues



La Honda Creek Open Space Preserve (Greg Hughes)



El Sereno Open Space Preserve (Frances Freyberg)

Statement of Net Position

The statement of net position presents information on all of Midpen's assets and liabilities, deferred outflows and deferred inflows, with the difference between these amounts being reported as net position. The net position is the difference between what Midpen owns and what it owes. Net Position is an aggregate view of the District's finances and at the end of FY25, the net position was \$543.9 million.

STATEMENT OF NET POSITION AS OF JUNE 30, 2025 (IN THOUSANDS)

	Total FY25	Total FY24	Total FY23
Current Assets	\$159,930	\$113,939	\$102,598
Capital Assets, Net of Depreciation	\$90,288	\$87,791	\$65,437
Non-depreciable Capital Assets	\$527,607	\$515,515	\$525,690
Other Noncurrent Assets	\$5,980	\$6,045	\$6,281
Deferred Outflows of Resources	\$14,614	\$16,797	\$17,835
Total Assets and Deferred Outflows	\$798,419	\$740,087	\$717,841
Current Liabilities	\$18,225	\$15,218	\$14,266
Non-Current Liabilities	\$229,837	\$199,930	\$205,636
Deferred Inflows of Resources	\$6,471	\$8,436	\$8,770
Total Liabilities and Deferred Inflows	\$254,533	\$223,584	\$228,672
Net Investment in Capital Assets	\$393,937	\$448,182	\$435,083
Restricted Net Position	\$7,128	\$6,510	\$4,345
Unrestricted Net Position	\$142,822	\$61,811	\$49,741
Net Position, End of Period	\$543,886	\$516,503	\$489,169



La Honda Creek Open Space Preserve (Frances Freyberg)

Revenues and Expenses (Governmental Activities)

Given the nature of Midpen's finances and operations, all financial activities are governmental. Our primary source of revenue is property taxes, levied on all taxable property within the district's boundaries, covering portions of Santa Clara and San Mateo counties. Revenue for the year ended June 30, 2025, totaled \$92.5 million, reflecting an increase of \$8.6 million or 10.26% compared to FY24. Property tax revenue continues to rise steadily due to growth in the assessed valuation of real property. Investment earnings also increased due to improved investment yields and the interest earned on general obligation bond proceeds. Total expenses for FY25 were \$65.1 million, marking an increase of \$8.3 million or 14.61% compared to FY24. This rise is attributed to higher overall capital expenditures and staff increases as Midpen continues to build out its staffing levels to support more open space protection, restoration, and public access. Midpen's overall net position increased by \$27.4 million as the District continues to pay down long-term debt and continues to strengthen reserves for future projects, open space acquisitions, and infrastructure.

STATEMENT OF CHANGES IN NET POSITION AS OF JUNE 30, 2025 (IN THOUSANDS)

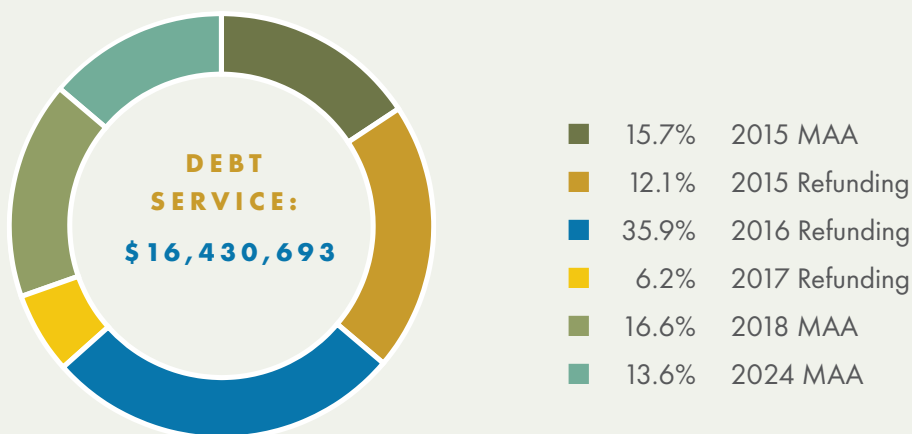
	Total FY25	Total FY24	Total FY23
Revenues			
General Revenues	\$86,048	\$78,650	\$72,446
Program Revenues	\$6,313	\$7,198	\$14,561
Special Item—Gain (Loss) on Disposal of Capital Assets	\$138	(\$1,962)	\$8,155
Total Revenues	\$92,499	\$83,886	\$95,162
Expenses			
Land Preservation	\$57,541	\$50,363	\$45,382
Interest and Fiscal Charges	\$7,575	\$6,449	\$7,126
Total Expenses	\$65,116	\$56,812	\$52,508
Increase in Net Position Before Adjustments	\$27,383	\$27,074	\$42,654
Prior Period Adjustments	—	\$260	—
Increase in Net Position	\$27,383	\$27,334	\$42,654
Net Position, Beginning of Period	\$516,503	\$489,169	\$446,515
Net Position, End of Period	\$543,886	\$516,503	\$489,169

Debt

Midpen is legally restricted to issuing debt not to exceed five percent of the assessed valuation of the property situated within the District's boundaries. As of June 30, 2025, the assessed value of property within the District's jurisdiction totaled \$402.0 billion, resulting in a legal limit of \$20.1 billion. Midpen's revenue bonds, and refunding bonds are secured by general fund property tax revenue, while the general obligation bonds are secured through a separate ad valorem tax levy on all taxable property within the District's boundaries. The latest ratings for Midpen's debt issues from Standard and Poor's and Fitch Ratings are shown below. Based on the debt issue balance as of June 30, 2025, the District is well within the legal issuance limit.

Debt Issue	S & P	Fitch	Balance as of June 30, 2025
2012 Refunding Promissory Notes	AAA	AAA	\$6,580,603
2015 General Obligation Bonds (MAA) Series A	AAA	AAA	\$36,600,000
2015 Refunding Promissory Notes	AAA	AAA	\$14,705,000
2016 Refunding Green Bonds	AAA	AAA	\$27,755,000
2017 Refunding Green Bonds Series A	AAA	AAA	\$25,025,000
2018 General Obligation Green Bonds (MAA)	AAA	AAA	\$42,030,000
2024 General Obligation Green Bonds (MAA)	AAA	AAA	\$36,290,000
Total			\$188,985,603

TOTAL DEBT SERVICE PAID FOR FISCAL YEAR ENDING JUNE 30, 2025





Government Finance Officers Association

Award for
Outstanding
Achievement in
Popular Annual
Financial Reporting

Presented to

**Midpeninsula Regional Open Space District
California**

For its Annual Financial Report
For the Fiscal Year Ended

June 30, 2024

Christopher P. Morill

Executive Director/CEO



Bear Creek Redwoods Open Space Preserve (Frances Freyberg)

Measure AA Projects

FUNDED BY

MEASURE AA

2014 OPEN SPACE BOND

In June 2014, voters approved Measure AA (MAA), a \$300 million general obligation bond to protect natural open space lands; open preserves or areas of preserves that are currently closed; construct public access improvements such as new trails and staging areas; and restore and enhance open space land, which includes forests, streams, watersheds and coastal ranch areas.

In August 2015, Midpen issued its first tranche of \$45 million in general obligation bonds to reimburse itself for project expenses planned for approximately the next two or three years, as well as the legally permitted look-back period of 60 days prior to board's certification of election results.

In February 2018, Midpen issued its second tranche of \$50 million in general obligation bonds. In early FY25, Midpen issued its third tranche of \$37.4 million of tax-exempt general obligation bonds.

EXPENDITURE PLAN

The MAA expenditure plan is the culmination of an 18-month community vision planning effort that began in 2012 and yielded a list of 54 priority actions designed to help Midpen focus, inspire and coordinate open space conservation and management on the San Francisco Peninsula, San Mateo Coast and South Bay regions for the next 40 years. Portions of the top 25 priority actions (Portfolios 1-25) are funded by MAA and included in the expenditure plan. The full MAA bond accountability report, available on our website, is arranged in parallel with the expenditure plan to facilitate review by the Bond Oversight Committee and the general public.

ANNUAL BUDGET

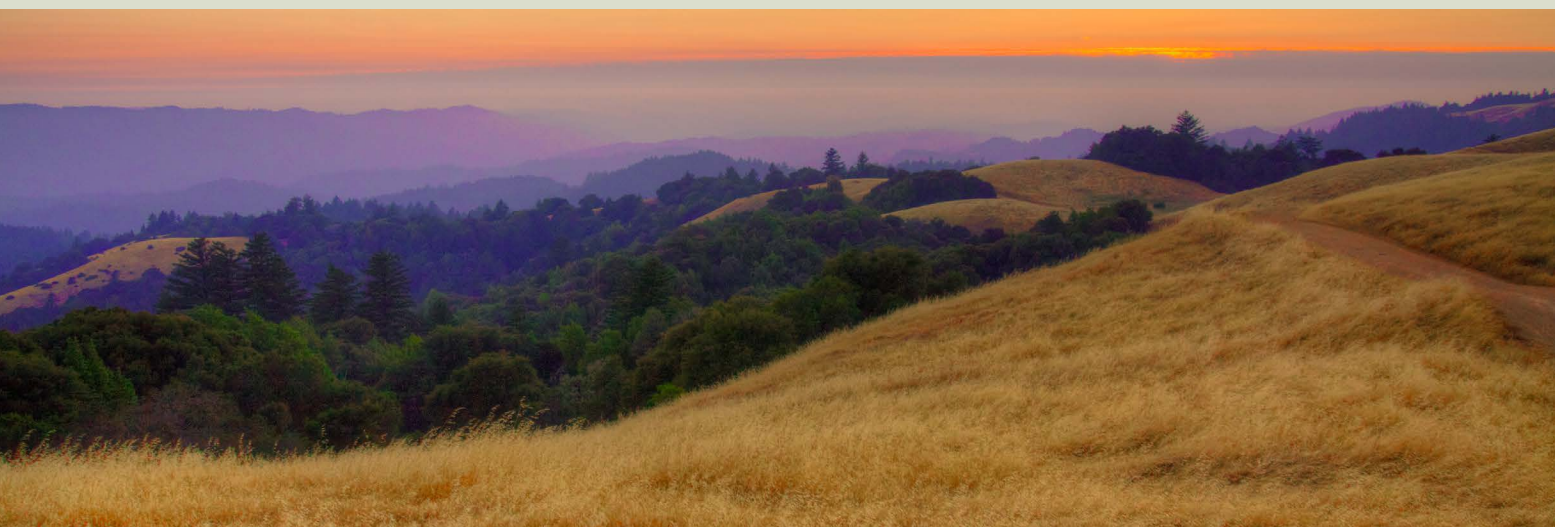
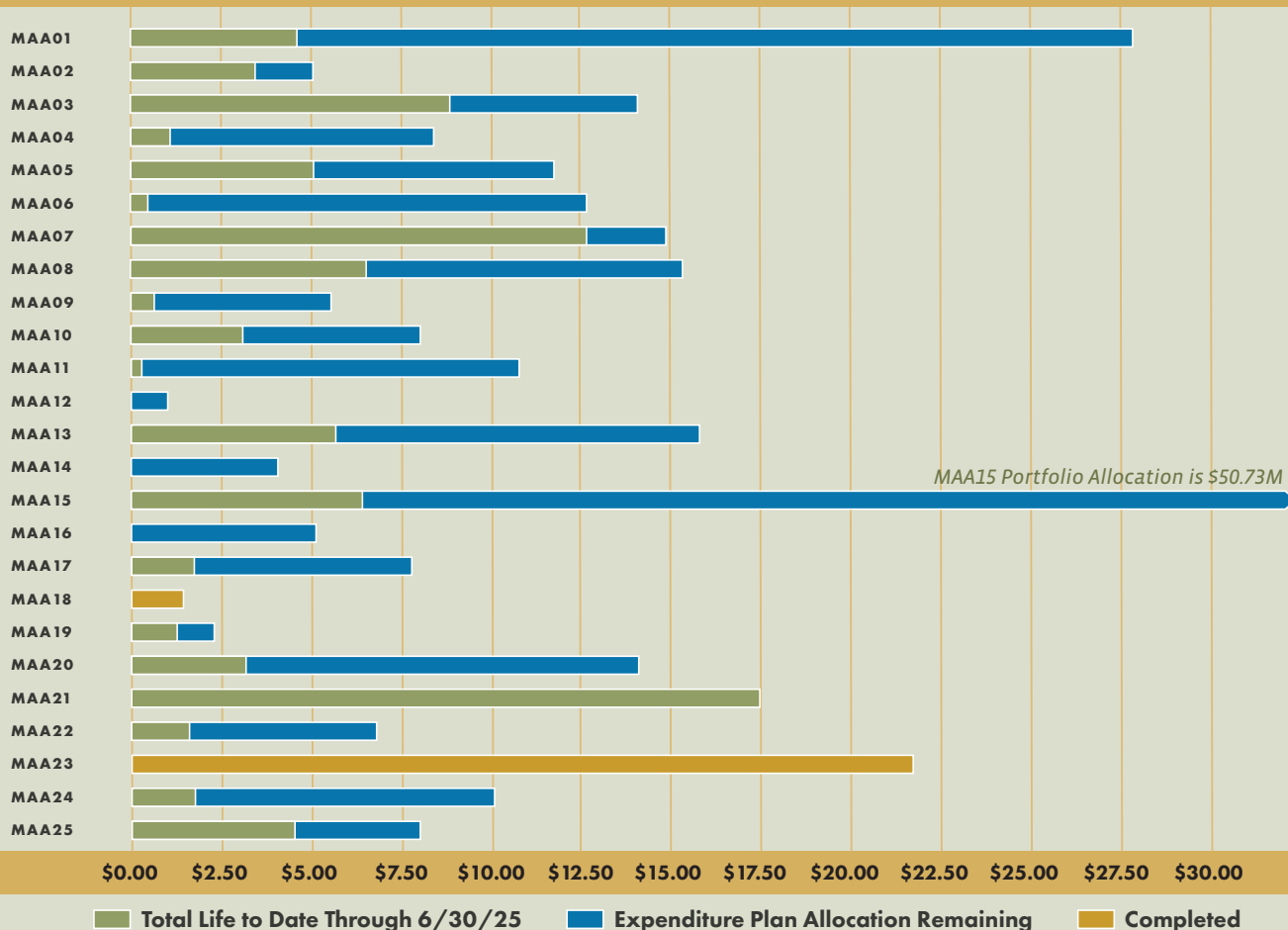
Each year Midpen embarks upon a priority-setting and budgeting process with the board, allowing for at least a six-month planning process. The final budget and action plan is approved prior to the start of the fiscal year, which begins July 1. Within the budget document, there is an MAA project budget overview, which provides a prospective view into next year's planned spending.



Stevens Creek Shoreline Nature Area (Gary Brauch)

The following chart shows the expenditure plan allocations broken down by portfolio, with the total expenditures for each portfolio through June 30, 2025. The purpose of this chart is to show the portfolio allocations that were approved in the expenditure plan and the relative expenditures in each portfolio, life-to-date. The MAA program and its portfolios are broad and complex and subject to a separate audit. For more detailed information regarding the portfolio allocations and expenditures, please visit openspace.org/MAAreport.

PORTFOLIO LEVEL EXPENDITURES TO ALLOCATIONS (In Millions)



Long Ridge Open Space Preserve (Jim Mosher)

Accomplishments

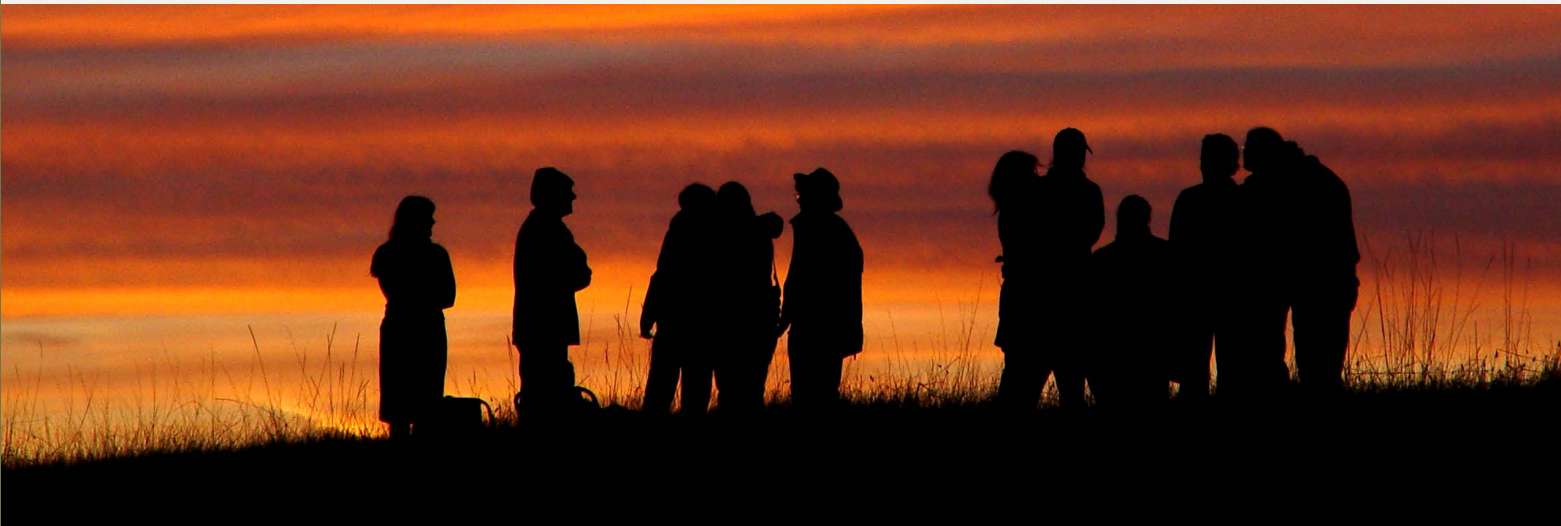
Over the course of the past fiscal year, Midpen has accomplished major milestones and made substantial progress on its key action plan projects adopted by the Board of Directors, which include the 25 Measure AA portfolios. The accomplishments for FY25 are outlined across the following five categories:

- ❖ Land Acquisition and Preservation
- ❖ Natural Resources Protection and Restoration
- ❖ Public Access, Education and Outreach
- ❖ General/Districtwide Support of Mission
- ❖ Awards, Grants and Recognition

Highlights of the major accomplishments are provided below.

LAND ACQUISITION AND PRESERVATION

- ❖ Midpen acquired two properties totaling 36.6 acres to expand and enhance **El Sereno Open Space Preserve**. The larger, 35.2-acre property acquisition will fill a critical gap between the expansive trail networks located on each side of Highway 17 via a future trail overcrossing planned for construction in FY28. The smaller, 1.4-acre acquisition secures the main public entry point into the preserve from the west for hikers, maintenance crews and emergency services.
- ❖ In May 2025, Midpen significantly expanded **Russian Ridge Open Space Preserve** by purchasing a 273.5-acre open space property, permanently safeguarding a beautiful mosaic of woodlands, shrublands, open grasslands and 44 acres of redwood forest. It also protects two seasonal streams that are vital to the Upper San Gregorio Creek Watershed.
- ❖ Midpen purchased a 40-acre property in March 2025, essential for the development of the future Mount Umunhum-to-the-Sea Trail that will one day connect people from the Mount Umunhum summit and its surrounding trails westward toward Loma Prieta and beyond to the Santa Cruz County coastline. In addition to trail access, this property plays a vital role in connecting larger natural areas within the 19,500-acre **Sierra Azul Open Space Preserve** and surrounding open space lands, creating pathways for wildlife between the Santa Cruz Mountains and the Diablo and Gabilan ranges.



La Honda Creek Open Space Preserve (Rebecca Holland)

NATURAL RESOURCES PROTECTION AND RESTORATION

- ❖ With a rust-red head and bright red and turquoise stripes running down its dark black body, it is clear why the San Francisco garter snake (*Thamnophis sirtalis tetrataenia*) has been called the most beautiful snake in the world. Despite its name, this dazzling snake lives primarily in San Mateo County, though its historic range stretches from San Francisco to northern Santa Cruz County. Midpen and its partners launched a vital “head-starting” program as part of a conservation effort to support the federally endangered San Francisco garter snake. Working with partner agency biologists at the United States Geological Survey, gravid (pregnant) female snakes were captured from a healthy and abundant population on a Midpen preserve and transported to the San Francisco Zoo to raise their offspring in a safe environment, with the goal of joining them with other populations that are on the brink of extirpation (local extinction) to increase the health and size of these populations.
- ❖ Midpen is collaborating with Santa Clara County and other local agencies on the Alma Bridge Road Wildlife Passage project which aims to enhance wildlife connectivity, specifically for California newts, across Alma Bridge Road near Lexington Reservoir within zones of known high roadkill counts. This past year, Midpen completed technical studies and schematic designs for proposed roadway improvement options that will facilitate safe wildlife passage.
- ❖ Midpen renamed a 1.2-mile section of Bay Area Ridge Trail in **Russian Ridge Open Space Preserve** to “Badger’s Byway”, acknowledging and highlighting the presence of American badgers in the Skyline region. American badgers (*Taxidea taxus*), a listed species of special concern, are true ecosystem engineers. Their digging causes disturbances in the soil, which positively affects soil properties and the resulting landscapes.
- ❖ A major part of Midpen’s wildlife preparedness work involves reducing the amount of flammable vegetation (what we call “fuel”) and creating fuel breaks, which are areas where vegetation is thinned or removed to slow a fire’s spread. This is crucial for ensuring safe escape routes. This year, Midpen initiated fuel breaks along Highways 35 and 84, and completed maintenance on existing breaks in multiple preserves, including **Coal Creek, Teague Hill** and **La Honda Creek Open Space Preserves**. Midpen also successfully tackled the removal of highly flammable eucalyptus trees along Highway 84 and on Monte Bello Road.
- ❖ Midpen’s wildland fire resiliency efforts also focus on restoring the health of natural habitats. This is demonstrated through multi-year plans to reduce wildfire fuels and rehabilitate ecosystems at locations such as **Bear Creek Redwoods, Long Ridge, El Sereno, Felton Station**, and **Saratoga Gap Open Space Preserves**, as well as the Cathedral Oaks area within **Sierra Azul Open Space Preserve**. These long-term efforts strengthen the resilience of these landscapes against increasingly intense wildfires. A great example from this year is the restoration of over seven acres of a former Christmas tree farm comprised of dense, overgrown cultivar Douglasfir trees (*Pseudotsuga menziesii*) in Bear Creek Redwoods. These trees supported minimal native understory, provided low-quality wildlife habitat and exhibited low resiliency to wildland fire.

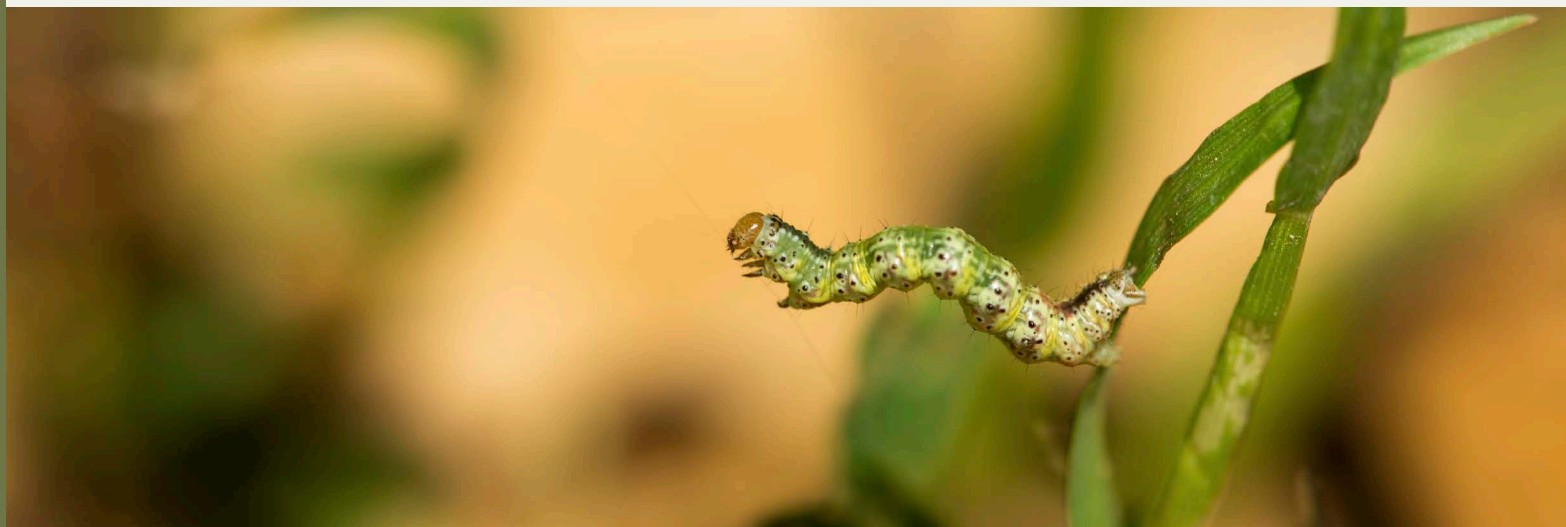


Pulgas Ridge Open Space Preserve (Winona Reif)

- ❖ For the first time in 14 years, Midpen collaborated with Cal Fire and Santa Clara County to conduct a nine-acre prescribed burn operation in a closed area of **Sierra Azul Open Space Preserve** in fall 2024. A prescribed burn is a science-based tool in which low-intensity, controlled fire is intentionally set, allowed to burn then fully extinguished. These burns mimic natural fire cycles, helping to clear out excess vegetation, promote healthier and open grasslands, improve habitat for wildlife and reduce the risk of large, uncontrolled wildfires.
- ❖ Conservation grazing is a tool Midpen uses to care for working lands by enhancing biodiversity, reducing wildland fire risk and supporting local agriculture on the San Mateo County Coast. This year, Midpen improved rangelands that are part of its conservation grazing program across **La Honda Creek**, **Purisima Creek Redwoods**, **Tunitas Creek** and **Skyline Ridge Open Space Preserves**. Improvements included brush management across more than 650 acres, upgrades to water systems and the installation of wildlife-friendly fencing.

PUBLIC ACCESS, EDUCATION AND OUTREACH

- ❖ In fall 2024, as part of a Measure AA-funded project to expand public access and restore redwood habitat at **Bear Creek Redwoods Open Space Preserve**, Midpen opened an entirely new area of the preserve to the public. With the addition of the recently completed Thimbleberry Trail, a total of four miles of trail have been recently opened in the northeastern area of the preserve to equestrians and hikers. Midpen's new trails and outstanding contributions to expand and enhance public trail use in California were recently recognized with the prestigious Merit Award for Development through the California Trails and Greenways awards program.
- ❖ Midpen's trail crew continued building trails in **La Honda Creek Open Space Preserve**. In FY25, the trail crew constructed 1.6 miles of new trail, including a trail segment that connects the Coho Vista Trail in upper La Honda Creek to an existing, improved ranch road and a new trail further south, in the central area of the preserve.
- ❖ The Highway 17 Wildlife and Trail Crossings project aims to build a wildlife undercrossing and a separate multiuse trail overcrossing near Lexington Reservoir. These crossings will reduce wildlife-vehicle collisions, connect more than 50 miles of regional trails, and link over 30,000 acres of protected public lands and habitat—providing safe passage for mountain lions, deer, and other wildlife across Highway 17. This year, Midpen completed the environmental review work and preliminary designs necessary for the project. During FY25, the project's environmental documentation and public disclosure efforts were graciously recognized with prestigious awards, including a Project Merit Award from the Environmental Business Journal in 2024 and an Outstanding Environmental Analysis Document Award from the Association of Environmental Professionals in 2025.

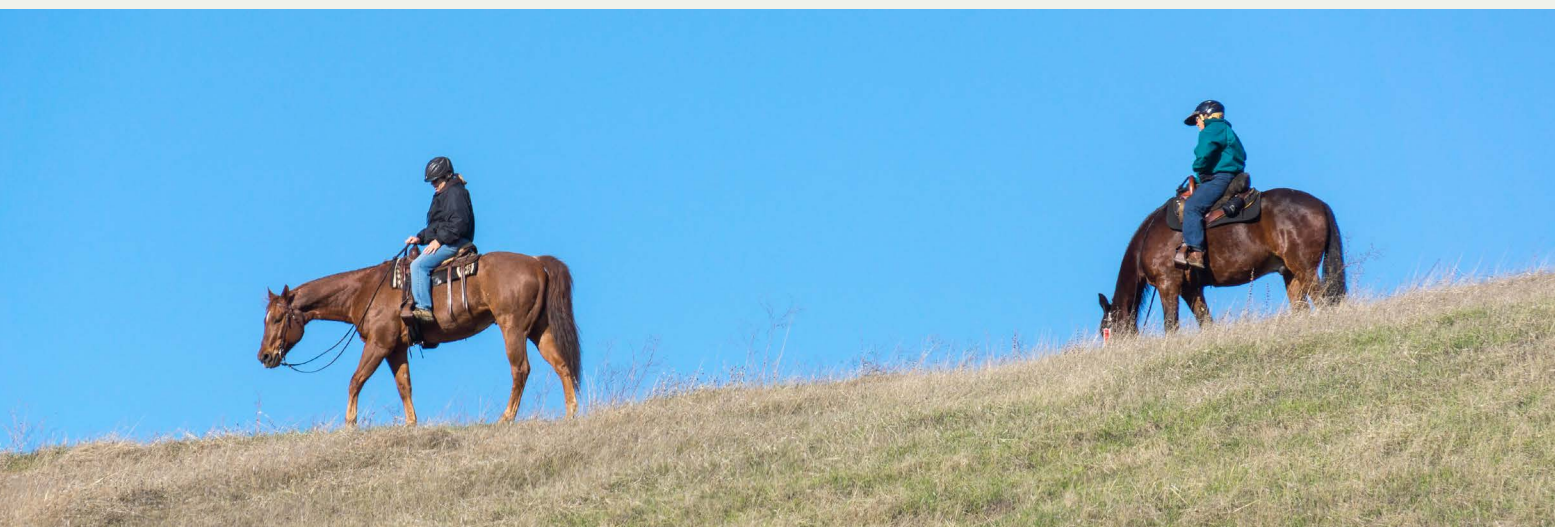


Foothills Open Space Preserve by (Garrett Nakamura)

- ❖ Over the past year, Midpen made a substantial investment in preserve-wide ADA improvements, significantly enhancing accessibility for everyone. This includes adding new ADA parking spaces and upgrading trails to ADA standards at **Skyline Ridge**, **Russian Ridge** and **Pulgas Ridge Open Space Preserves**. Improvements include surface hardening, reducing steepness and adding new access ramps.
- ❖ **El Corte de Madera Creek Open Space Preserve**, with its 34 miles of winding trails through redwood forests, is now easier to explore due to a new trail-junction numbering system. Midpen staff developed this user-friendly system to help visitors quickly pinpoint their location within the nearly 3,000-acre preserve. Every trail intersection now has a unique number that matches both printed and digital maps. The new numbered signs were installed in August 2024, and all maps—including those on Midpen’s website and popular offline navigation apps like Avenza and OuterSpatial—have been updated.
- ❖ 4,418 volunteer docent hours, 301 guided public activities and over 2,400 participants
- ❖ 18 field trips serving 413 students
- ❖ 135 volunteer activities that logged 10,360 hours of land stewardship work
- ❖ 2,380 volunteer trail reports in support of land management
- ❖ 50 community outreach events

AWARDS, GRANTS AND RECOGNITION

- ❖ Received the following notable awards and special recognition for its projects, programs and efforts:
 - ◆ The Center for Digital Government (CDG) awarded Midpen with the Government Experience Award for its innovative Wildlife Camera and Constituent Privacy AI project. This project uses a custom-developed AI platform to blur human faces within wildlife photos before they are uploaded for analysis.
 - ◆ Received Special Achievement in GIS (SAG) Award for *Trail Explorer* and *Open Data Midpen*.
 - ◆ Received three Government Finance Officers Association (GFOA) awards this year:
 - Distinguished Budget Presentation Award (ninth year).
 - Annual Comprehensive Financial Report Award (seventh year)
 - Popular Annual Financial Report Award (sixth year)
 - ◆ Received the California Society of Municipal Finance Officers Budget Award for the seventh straight year.
- ❖ Midpen received 3 new grant awards in FY25 totaling \$605,000 and has \$18 million in pending funding requests.



Fremont Older Open Space Preserve (Karl Gohl)



Long Ridge Open Space Preserve (Karl Gohl)



Midpeninsula Regional Open Space District

5050 El Camino Real
Los Altos, California 94022-1404
650-691-1200

info@openspace.org

openspace.org